

STATE OF ILLINOIS
DEPARTMENT OF TRANSPORTATION
DIVISION OF HIGHWAYS

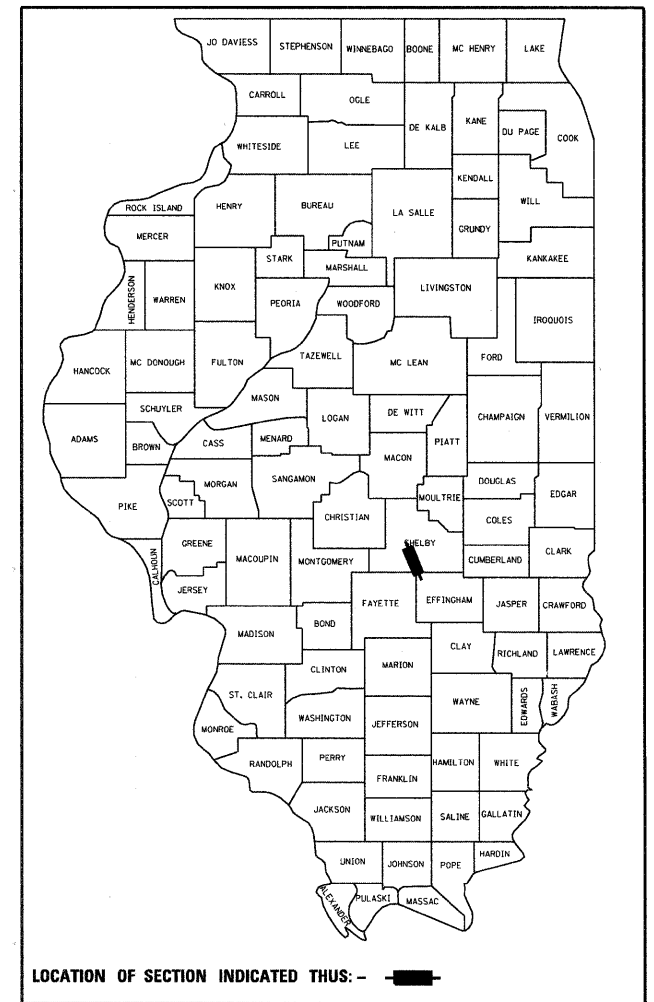
**PROPOSED
HIGHWAY PLANS**

FAP ROUTE 774 (IL 128)
SECTION (102BR)BR-2
PROJECT ACF-0774(032)
BRIDGE REPAIRS
SHELBY COUNTY

C-97-133-10

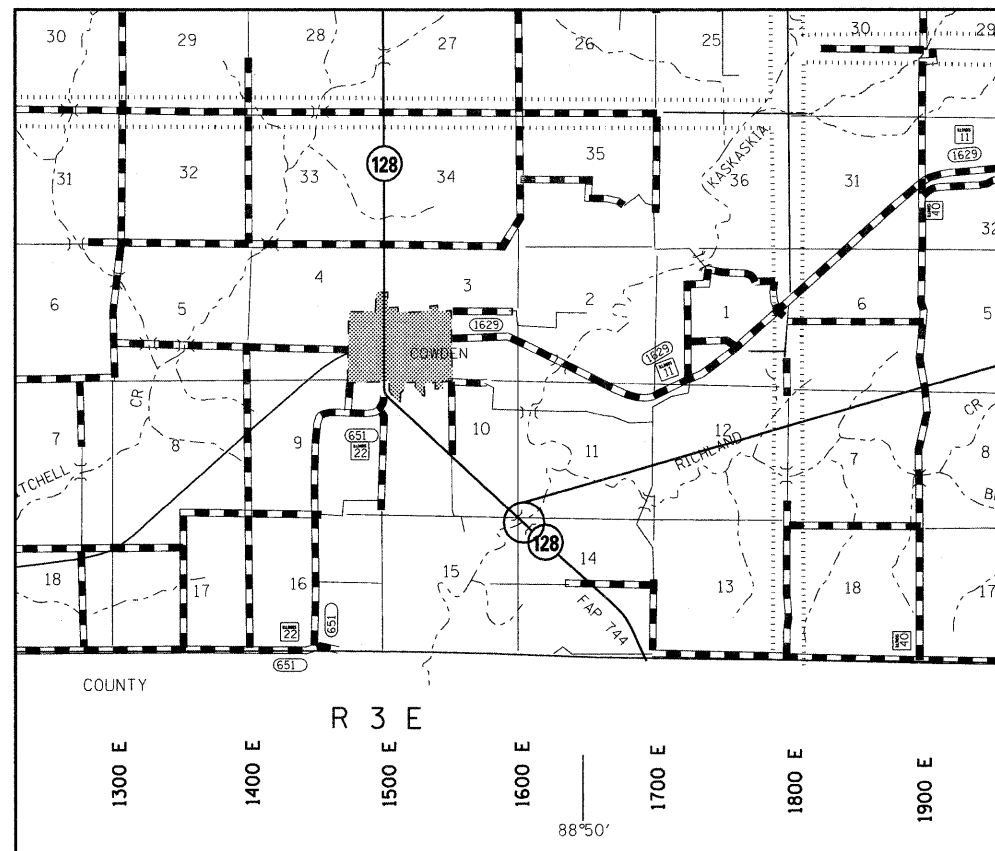
F.A.P. RTE.	SECTION	COUNTY	TOTAL SHEETS	SHEET NO.
774	(102BR)BR-2	Shelby	19	1
		ILLINOIS	CONTRACT NO. 74483	

D-97-066-10

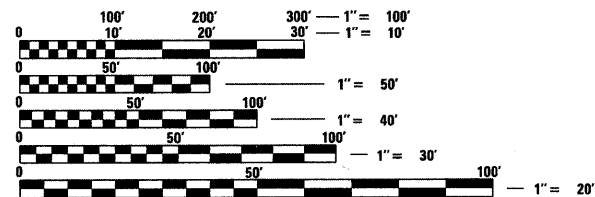


FOR INDEX OF SHEETS, SEE SHEET NO. 2

ADT (2009) = 2550



LOCATION OF PROPOSED IMPROVEMENT



FULL SIZE PLANS HAVE BEEN PREPARED USING STANDARD ENGINEERING SCALES. REDUCED SIZED PLANS WILL NOT CONFORM TO STANDARD SCALES. IN MAKING MEASUREMENTS ON REDUCED PLANS, THE ABOVE SCALES MAY BE USED.

J.U.L.I.E.
JOINT UTILITY LOCATION INFORMATION FOR EXCAVATION
1-800-892-0123
OR 811

PROJECT ENGINEER: MARK DAUGHERTY
PROJECT MANAGER: BRIAN LEWIS

CONTRACT NO. 74483

GROSS LENGTH = 649 FT. = 0.12 MILE
NET LENGTH = 649 FT. = 0.12 MILE

STATE OF ILLINOIS
DEPARTMENT OF TRANSPORTATION
DIVISION OF HIGHWAYS

SUBMITTED Dec. 16 2010
Roy J. Duckell
DEPUTY DIRECTOR OF HIGHWAYS, REGION ENGINEER

February 4 2011
Scott E. Stitt, P.E.
acting ENGINEER OF DESIGN AND ENVIRONMENT

February 4 2011
Christina M. Reed
DIRECTOR OF HIGHWAYS, CHIEF ENGINEER

**PRINTED BY THE AUTHORITY
OF THE STATE OF ILLINOIS**