

STATE OF ILLINOIS
DEPARTMENT OF TRANSPORTATION
DIVISION OF HIGHWAYS

PROPOSED
HIGHWAY PLANS

F.A.I. ROUTE 72 (INTERSTATE 72)
SECTION D7 BRIDGE PAINTING 2011-2

BRIDGE PAINTING
MACON COUNTY

C-97-016-11

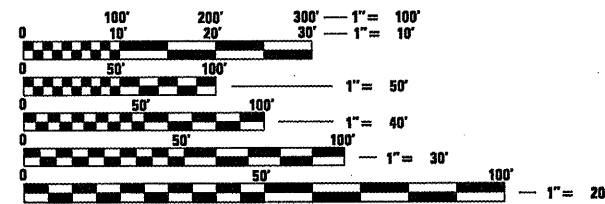
F.A.I. RTE.	SECTION	COUNTY	TOTAL SHEETS	SHEET NO.
72		MACON	9	1
		ILLINOIS	CONTRACT NO. 74505	

D-97-005-11



LOCATION OF SECTION INDICATED THUS: - [black rectangle] -

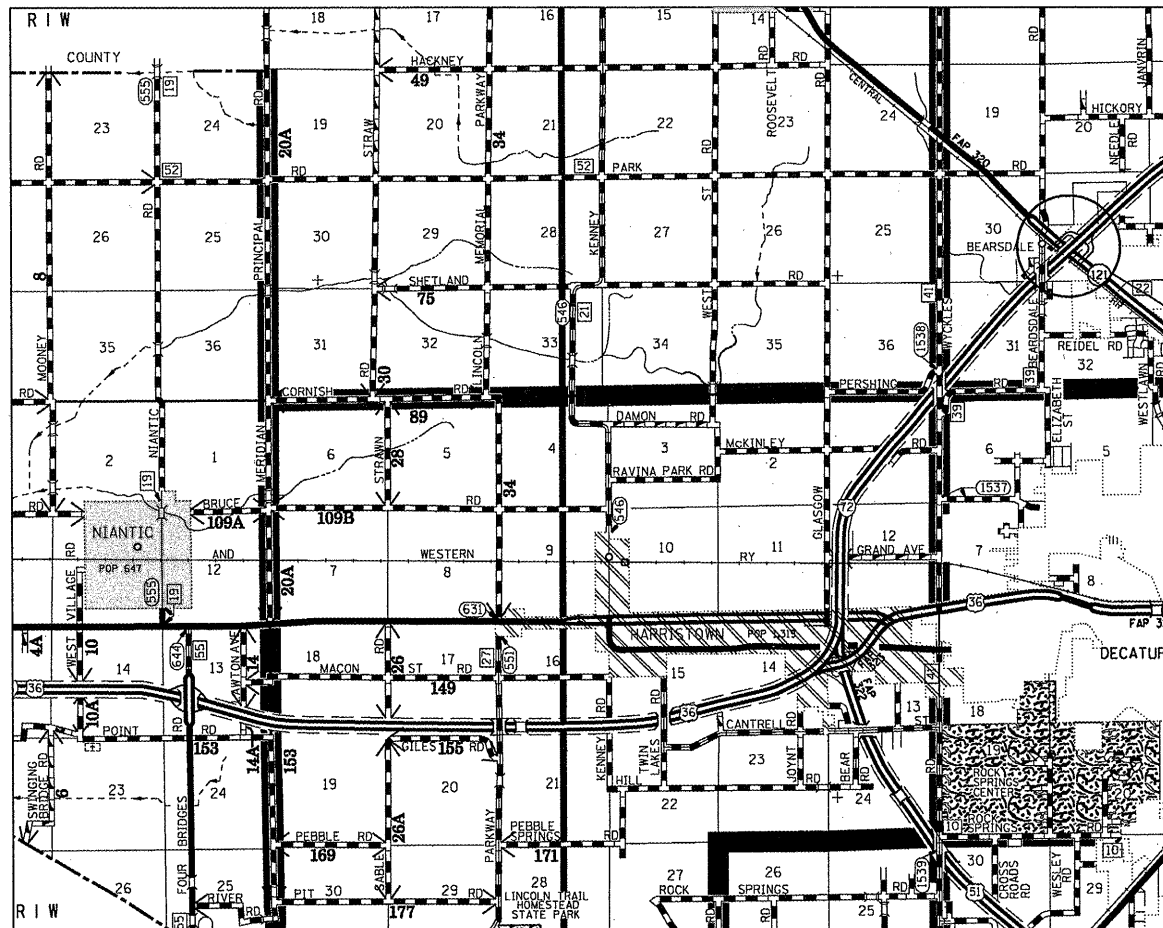
FOR INDEX OF SHEETS, SEE SHEET NO. 2



FULL SIZE PLANS HAVE BEEN PREPARED USING STANDARD ENGINEERING SCALES. REDUCED SIZED PLANS WILL NOT CONFORM TO STANDARD SCALES. IN MAKING MEASUREMENTS ON REDUCED PLANS, THE ABOVE SCALES MAY BE USED.

J.U.L.I.E.
JOINT UTILITY LOCATION INFORMATION FOR EXCAVATION
1-800-892-0123
OR 811

PROJECT ENGINEER: TOM RONAN
PROJECT MANAGER: TOM RONAN
PHONE: (217)-342-8320
CONTRACT NO. 74505



LOCATION #1:
SN 058-0074 (EB);
SN 058-0075 (WB)

GROSS LENGTH = x.xx FT. = x.xxx MILE
NET LENGTH = x.xx FT. = x.xxx MILE

STATE OF ILLINOIS
DEPARTMENT OF TRANSPORTATION
DIVISION OF HIGHWAYS

SUBMITTED Dec 13 2010
Scott E. Stitt, P.E.
DEPUTY DIRECTOR OF HIGHWAYS, REGION ENGINEER

Feb 4 2011
Scott E. Stitt, P.E.
ENGINEER OF DESIGN AND ENVIRONMENT

Feb 4 2011
Christine M. Readler
DIRECTOR OF HIGHWAYS, CHIEF ENGINEER

PRINTED BY THE AUTHORITY
OF THE STATE OF ILLINOIS

INDEX OF SHEETS

SHEET NO.	DESCRIPTION
1	TITLE SHEET
2	INDEX OF SHEETS, GENERAL NOTES, LOCATION DESCRIPTIONS
3	SUMMARY OF QUANTITIES
4-98	EXISTING STRUCTURE PLANS

THE FOLLOWING STANDARDS ARE A PART OF THESE PLANS AND ARE INCLUDED AFTER SHEET NO. 9:

STANDARD 701101-02	TYPICAL APPLICATION OF TRAFFIC CONTROL DEVICES
STANDARD 701106-02	TYPICAL APPLICATION OF TRAFFIC CONTROL DEVICES
STANDARD 701400-05	TYPICAL APPLICATION OF TRAFFIC CONTROL DEVICES
STANDARD 701402-08	TYPICAL APPLICATION OF TRAFFIC CONTROL DEVICES
STANDARD 701411-07	TYPICAL APPLICATION OF TRAFFIC CONTROL DEVICES
STANDARD 701601-07	TYPICAL APPLICATION OF TRAFFIC CONTROL DEVICES
STANDARD 701901-01	TYPICAL APPLICATION OF TRAFFIC CONTROL DEVICES

GENERAL NOTES

THIS SECTION SHALL BE CONSTRUCTED IN ACCORDANCE WITH THE PLANS, THE "STANDARD SPECIFICATIONS FOR ROAD AND BRIDGE CONSTRUCTION" ADOPTED JANUARY 1, 2007; THE SUPPLEMENTAL SPECIFICATIONS, THE RECURRING SPECIAL PROVISIONS, AND THE SPECIAL PROVISIONS INCLUDED IN THE PROPOSAL.

THE PROPOSED PROJECT IS LOCATED AT 1 LOCATION ON I-72 IN MACON COUNTY.

THE WORK INCLUDED IN THIS SECTION CONSISTS OF CLEANING AND PAINTING 2 BRIDGES AT 1 LOCATION AS SPECIFIED IN THE PLANS AND SPECIAL PROVISIONS.

THE STRUCTURAL STEEL SHALL BE CLEANED AND PAINTED AS SPECIFIED IN THE SPECIAL PROVISIONS.

ALL DECK DRAINS SHALL BE PAINTED ACCORDING TO THE REQUIREMENTS OF PAINT SYSTEM 1 - OZ/E/U. ANY DAMAGE CAUSED BY THE CONTRACTOR SHALL BE REPAIRED AT THEIR OWN EXPENSE AND NO ADDITIONAL COMPENSATION WILL BE ALLOWED.

ONLY STRUCTURAL STEEL IS TO BE PAINTED. ALL OTHER SURFACES WILL BE PROTECTED FROM BEING PAINTED. ALL PAINT AND OVERSPRAY WILL BE REMOVED AT THE CONTRACTOR'S EXPENSE.

THE SSPC OP1 AND OP2 PAINTING CONTRACTOR CERTIFICATION WILL BE REQUIRED FOR THIS PROJECT.

LOCATION DESCRIPTIONS

LOCATION #1 & #2

ROUTE: FAI 72
 MARKED: I-72
 SECTION: 58-63HVB
 STATION: 724+45.63
 STRUCTURE NUMBERS: 058-0074 & 058-0075

TYPE OF BRIDGE: Wide Flange I Beams-3 Spans Each Bridge (19 Beams Total, Both Structures)
 LOCATION: 1.5 Miles Northwest of Decatur
 FEATURE CARRIED/SPANNED: FAI 72 over ILL 121 & ILL Central Gulf RR

COLOR OF THE FINISH COAT SHALL BE GRAY, MUNSELL 5B 7/1.

Cleaning and painting of the existing structural steel shall be as specified in the special provision for "Cleaning and Painting Existing Steel Structures". All structural steel, including beams, bearings and diaphragms, shall be cleaned by SSPC-SP10 - Near White Metal Blast Cleaning.

The designated areas cleaned per Near White Metal Blast Cleaning - SSPC-SP10 shall be painted according to the requirements of Paint System 1 - OZ/E/U.

Two air monitors will be required at this location.

• D7 BRIDGE PAINTING 2011-2

FILE NAME =	USER NAME = swartzw	DESIGNED -	REVISED -	STATE OF ILLINOIS DEPARTMENT OF TRANSPORTATION	INDEX OF SHEETS GENERAL NOTES & LOCATIONS	F.A.I. RTE.	SECTION	COUNTY	TOTAL SHEETS	SHEET NO.	
ai\pwork\pwork\swartzw\0239428\vd77	305-shr-index.dgn	DRAWN -	REVISED -			72	*	MACON	9	2	
PLOT SCALE = 40.0000' / IN.		CHECKED -	REVISED -			CONTRACT NO. 74505					
PLOT DATE = 12/9/2010		DATE -	REVISED -			SCALE: NA	SHEET NO. 1 OF 1 SHEETS	STA.	TO STA.	ILLINOIS FED. AID PROJECT	

100% STATE

SUMMARY OF QUANTITIES			TOTAL	CONSTRUCTION
CODE NO	ITEM	UNIT	QUANTITIES	TYPE CODE
67100100	MOBILIZATION	L SUM	1	0014
70100207	TRAFFIC CONTROL AND PROTECTION, STANDARD 701402	EACH	2	2
70100420	TRAFFIC CONTROL AND PROTECTION, STANDARD 701411	EACH	2	2
70102630	TRAFFIC CONTROL AND PROTECTION, STANDARD 701601	L SUM	1	1
Z0007112	CONTAINMENT AND DISPOSAL OF LEAD PAINT CLEANING RESIDUES	L SUM	1	1
Z0010501	CLEANING AND PAINTING STEEL BRIDGE NO. 1	L SUM	1	1
Z0010502	CLEANING AND PAINTING STEEL BRIDGE NO. 2	L SUM	1	1
Z0048665	RAILROAD PROTECTIVE LIABILITY INSURANCE	L SUM	1	1

• D7 BRIDGE PAINTING 2011-2

FILE NAME =	USER NAME = swartzrw	DESIGNED -	REVISED -
ca\pwwork\pwwork\swartzrw\d0239428\d77	505-shr-soq.dgn	DRAWN -	REVISED -
	PLOT SCALE = 48.0000' / IN.	CHECKED -	REVISED -
	PLOT DATE = 12/9/2010	DATE -	REVISED -

**STATE OF ILLINOIS
DEPARTMENT OF TRANSPORTATION**

SUMMARY OF QUANTITIES

SCALE: NA	SHEET NO. 1 OF 1 SHEETS	STA.	TO STA.
-----------	-------------------------	------	---------

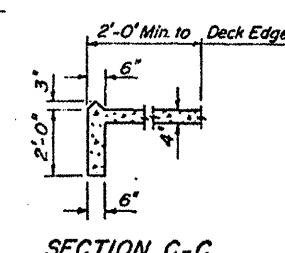
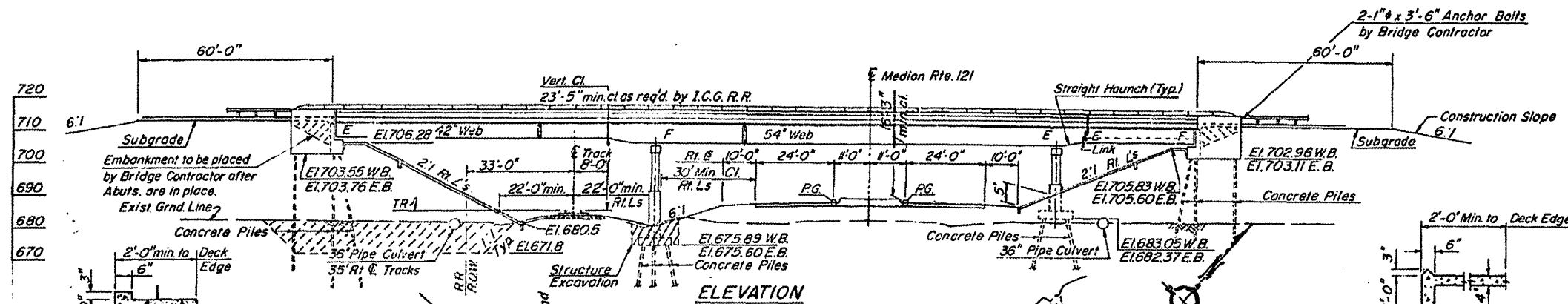
F.A.I. RTE.	SECTION	COUNTY	TOTAL SHEETS	SHEET NO.
72	•	MACON	9	3
ILLINOIS FED. AID PROJECT			CONTRACT NO. 74505	

B.M. # 102-6" Boat Spike in 15" Hackberry
698' R.I. Sta 727+00 (Along State Rte. 121)
Elev 674.950

STATE OF ILLINOIS
DEPARTMENT OF TRANSPORTATION

ROUTE NO.	SECTION	COUNTY	TOTAL SHEETS	SHEET NO.
A & I-72	58-63HVB	MACON	27	40
FED. ROAD DIST. NO. 2	ILLINOIS	FED. AID PROJECT		

SHEET NO. 1
26 SHEETS



GENERAL NOTES

All reinforcement bars shall be lapped 24 diameters unless otherwise shown. The Basic Lead Silico Chromate paint system shall be used for shop and field painting of structural steel.

Field welding of construction accessories will not be permitted to the bottom flange of beams or girders, nor to the top flange for a distance equal to one-fourth the span length each way from the pier supports. Field welding in other areas will be permitted only when approved by the Engineer.

Anchor bolts shall be set before bolting cross frames over supports. Fasteners shall be high strength bolts. Bolts 3/4" Ø, open holes 1/16" Ø, unless otherwise noted.

The embankment configuration shown shall be the minimum embankment that must be constructed prior to construction of the abutments.

The concrete rail section above the mandatory construction joint at the top of the slab shall be constructed of Class X Concrete, except the aggregates shall conform to the requirements of Handrail Concrete.

Protective Coat shall not be applied to surfaces to which Waterproofing Membrane System is applied.

Slope wall shall be reinforced with welded wire fabric 6"x6" mesh, weighing 58#/100 sq ft.

Calculated weight of Structural Steel = 1,028,530 Lbs.

Concrete Piles at Abutments shall be driven in holes precored through the embankment in accordance with Article 513.09 (c) of the Standard Specifications.

The main load carrying member components subject to the Supplemental Requirements for Notch Toughness are the flanges, as designated on the Order Elevation View along with Webs, Splice Plates, Link Plates and Pin Plates of the Steel Girders.

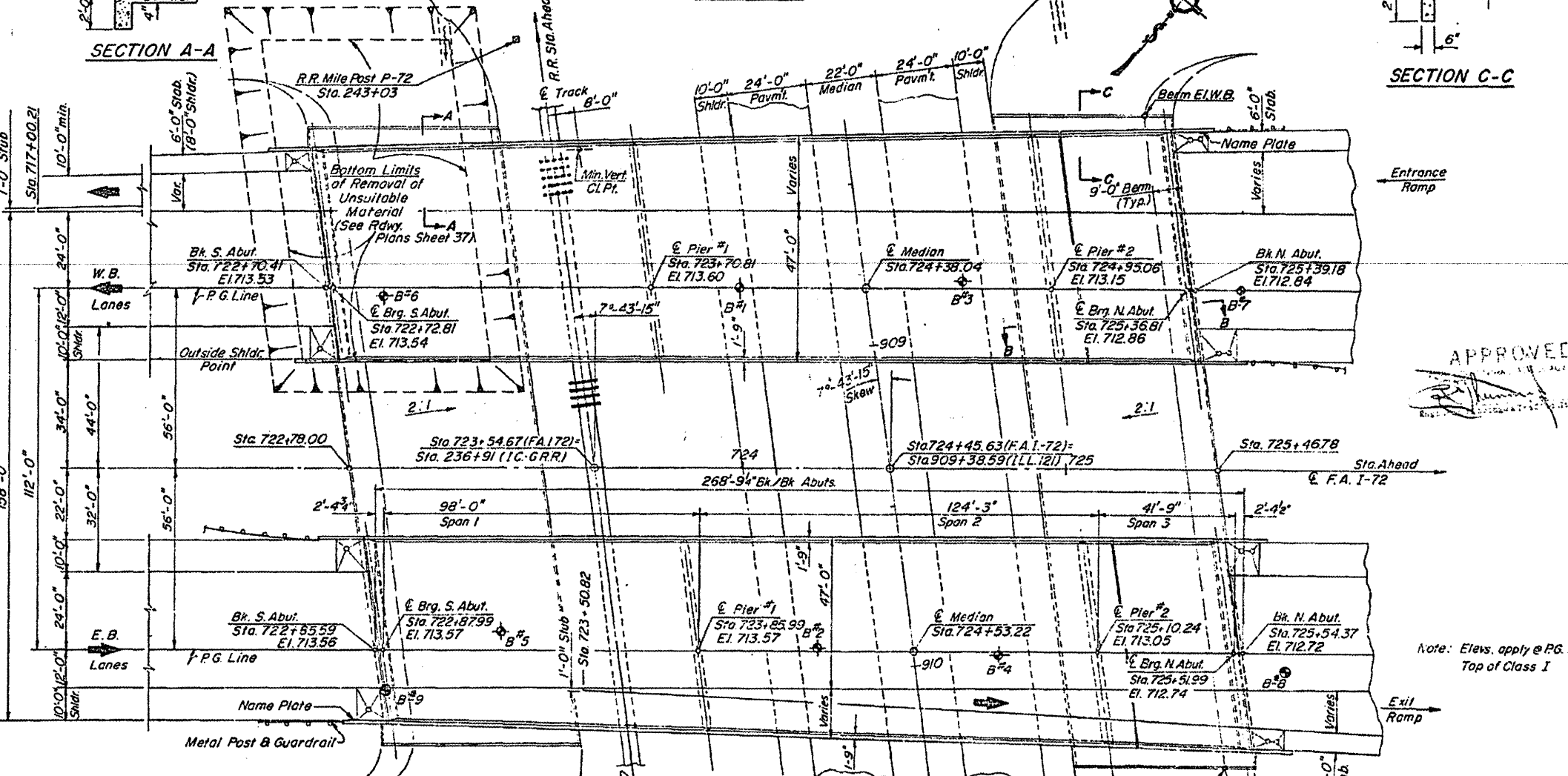
The Contractor shall drive 4 test piles in permanent locations as directed by the Engineer before ordering the remainder of piles. Test piles shall be driven at the following locations: One test pile at the South Abut. West Bound Lanes, One test pile at Pier #1 East Bound Lanes, One test pile at Pier #2 West Bound Lanes, and One test pile at the North Abut. East Bound Lanes.

See special provisions for Boring Data.

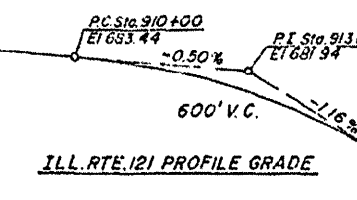
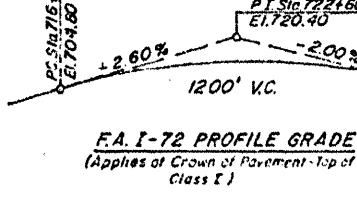
BILL OF MATERIALS

ITEM	UNIT	SUPER	SUB	TOTAL
Bit. Conc. Surface Course, Class I	Tons	300		300
Waterproofing Membrane System	Sq. Yds	3686		3686
Structure Excavation	Cu. Yds.		225	225
Protective Coat	Sq. Yds.	429		429
Class X Concrete	Cu. Yds.	1023.0	780.5	1803.5
Structural Steel	L.S.	1		1
Aluminum Railing	Lin. Ft.	1164		1164
Reinforcement Bars	Lbs.	268,290	89,350	357,640
Name Plate	Each	2		2
Sloped Wall (4")	Sq. Yds.		2980	2980
Prefabricated Joint Sealer (2 1/2")	Lin. Ft.	126		126
Stud Shear Connectors	Each	9405		9405
Concrete Piles	Lin. Ft.		8978	8978
Test Piles (Concrete)	Each		4	4
Neoprene Expansion Joint (2 1/2")	Lin. Ft.	136		136

APPROVED



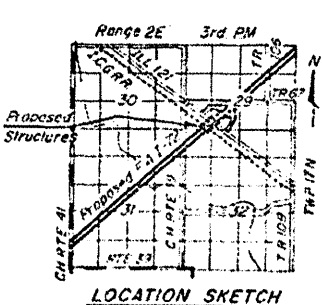
DESIGNED	D.V.
CHECKED	G.E.P.
DRAWN	R.H.H.
CHECKED	G.E.P. 5/8.75



TOP OF RAIL ELEVATIONS
ILL. CENT. GULF RR

STA	N RAIL	S RAIL
232+91	695.38	685.42
237+91	694.87	684.89
238+91	684.42	684.41
235+91	683.85	683.84
234+91	683.26	683.22

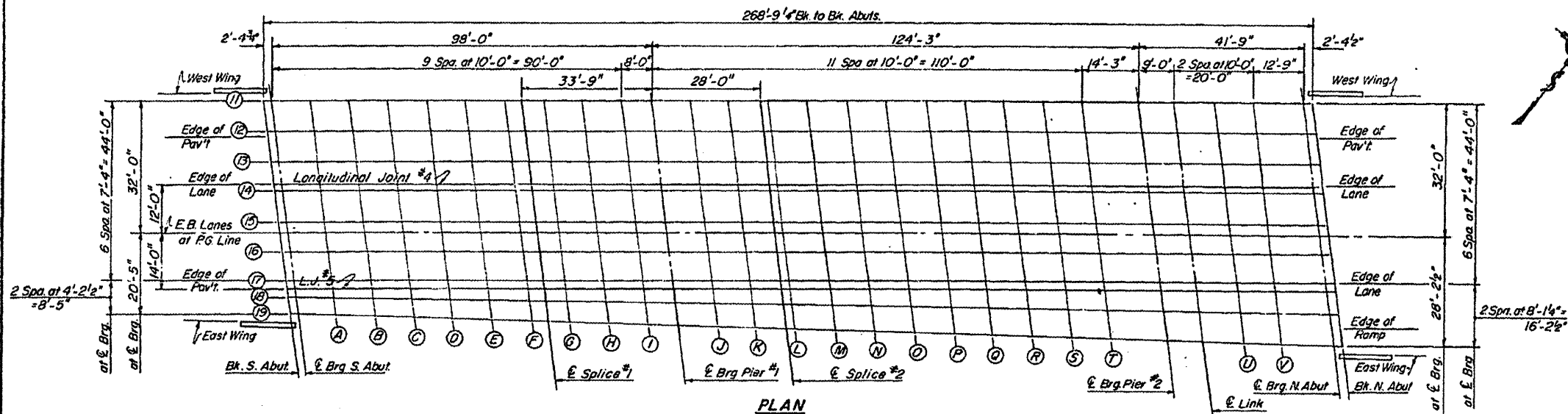
Mile Post P-72 S RR Survey
Sta. 243+03, 10.5' S of Track



GENERAL PLAN & ELEV.
F.A. I-72 OVER ILL. RTE 121
& ILL. CENT.-GULF RR.
MACON COUNTY
SEC. 58-63HVB
STA 724+45.63

STATE OF ILLINOIS
DEPARTMENT OF TRANSPORTATION

ROUTE NO.	SECTION	COUNTY	TOTAL SHEETS	SHEET NO.	SHEET NO. 5 26 SHEETS
F.A.I. 72	58-63HVB	MACON	27	44	
FED. ROAD DIST. NO. 7	ILLINOIS	FED. AID PROJECT			



PLAN

LINE	BEAM OR GIRDER	STATION	OFFSET	THEORETICAL GRADE ELEVATION	ELEVATION ADJUSTED FOR GRADE DEFLECTION	
Bk. of S. Abut.	W. Wing	72280.984	34.000	712.509	712.509	
	E. Pav't	72282.339	26.000	713.121	713.121	
	Lane	72283.986	12.000	713.374	713.374	
	P.G.	72285.593	0.001	713.564	713.564	
	E. Pav't	72287.220	-12.000	713.381	713.381	
	E. Wing	72288.627	-22.344	713.168	713.168	
S. BRG.	GDR-11	72283.652	32.000	712.831	712.831	
	GDR-12	72284.646	24.667	712.986	712.986	
	GDR-13	72285.640	17.333	713.140	713.140	
	GDR-14	72286.634	10.000	713.295	713.295	
	GDR-15	72287.629	2.667	713.401	713.401	
	P.G.	72287.990	0.001	713.569	713.569	
A	GDR-16	72288.623	-4.667	713.372	713.372	
	GDR-17	72289.617	-12.000	713.259	713.259	
	GDR-18	72290.187	-16.208	713.173	713.173	
	GDR-19	72290.758	-20.417	713.086	713.086	
	B	GDR-11	72303.652	32.000	712.865	712.865
		GDR-12	72304.646	24.667	713.019	713.019
GDR-13		72305.640	17.333	713.173	713.173	
GDR-14		72306.634	10.000	713.327	713.327	
GDR-15		72307.629	2.667	713.432	713.432	
P.G.		72307.990	0.001	713.600	713.600	
C	GDR-16	72308.623	-4.667	713.402	713.402	
	GDR-17	72309.617	-12.000	713.289	713.289	
	GDR-18	72310.227	-16.503	713.196	713.196	
	GDR-19	72310.838	-21.007	713.103	713.103	
	D	GDR-11	72323.652	32.000	712.824	712.824
		GDR-12	72324.646	24.667	712.978	712.978
GDR-13		72325.640	17.333	713.132	713.132	
GDR-14		72326.634	10.000	713.286	713.286	
GDR-15		72327.629	2.667	713.401	713.401	
P.G.		72327.990	0.001	713.569	713.569	
E	GDR-16	72328.623	-4.667	713.372	713.372	
	GDR-17	72329.617	-12.000	713.259	713.259	
	GDR-18	72330.288	-16.799	713.203	713.203	
	GDR-19	72330.918	-21.597	713.104	713.104	
	F	GDR-11	72343.652	32.000	712.888	712.888
		GDR-12	72344.646	24.667	713.042	713.042
GDR-13		72345.640	17.333	713.196	713.196	
GDR-14		72346.634	10.000	713.350	713.350	
GDR-15		72347.629	2.667	713.465	713.465	
P.G.		72347.990	0.001	713.633	713.633	
G	GDR-16	72348.623	-4.667	713.417	713.417	
	GDR-17	72349.617	-12.000	713.302	713.302	
	GDR-18	72350.307	-17.094	713.194	713.194	
	GDR-19	72350.998	-22.187	713.089	713.089	

(P.G. Elev. applies at top of Class I Surfacing)

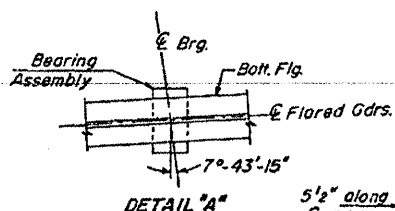
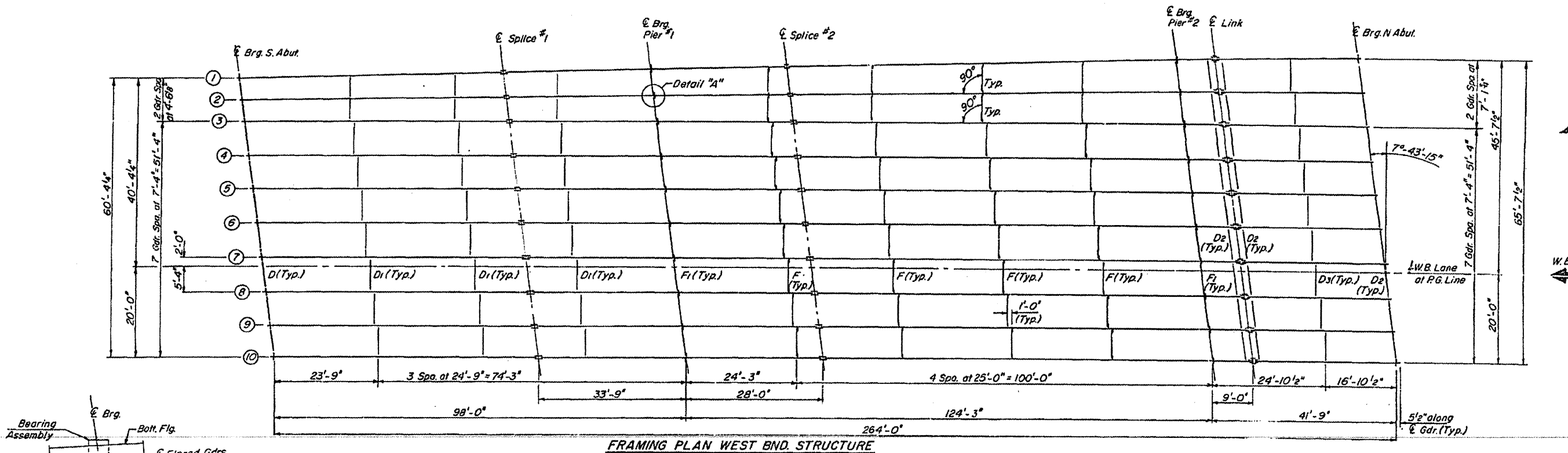
DESIGNED	D.V.K.
CHECKED	G.E.P.
DRAWN	J.T.
CHECKED	

EASTBOUND LANES
TOP OF CONCRETE SLAB ELEVATIONS
F.A.I. 72 OVER ILL. RTE. 121
& ILL. CENT. GULF RR.
MACON COUNTY
SEC. 58-63HVB
STA. 724+45.63

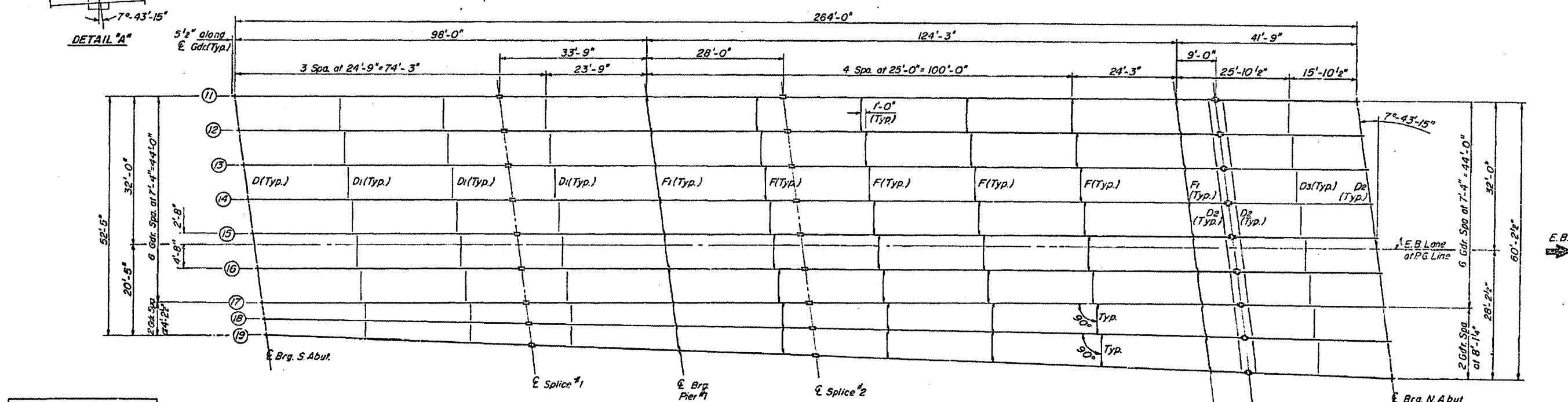
STATE OF ILLINOIS
DEPARTMENT OF TRANSPORTATION

ROUTE NO.	SECTION	COUNTY	TOTAL SHEETS	SHEET NO.
R.R. 1-72	58-63HVB	MACON	27	52
FED. ROAD DIST. NO. 7	ALIGNED	FED. AID PROJECT		

SHEET NO. 13
26 SHEETS



FRAMING PLAN WEST BND. STRUCTURE



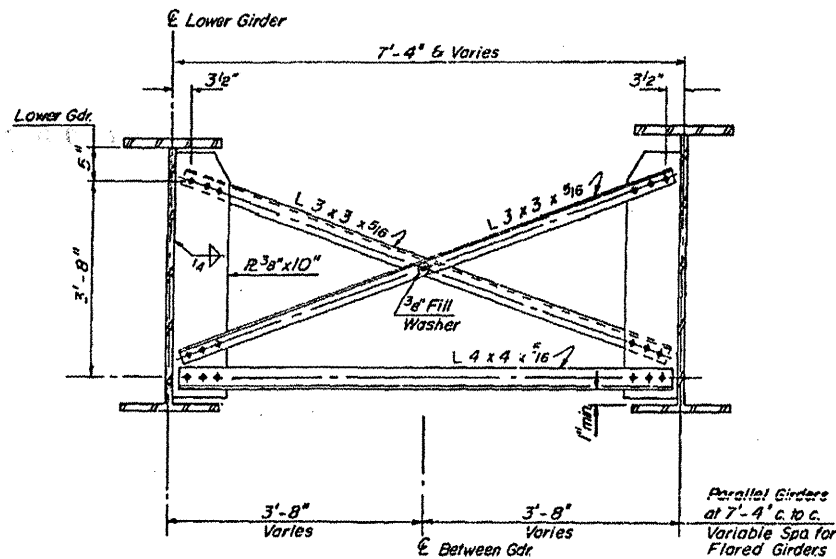
FRAMING PLAN EAST BND. STRUCTURE

DESIGNED	D.V.K.
CHECKED	G.E.K.
DRAWN	J.T.
CHECKED	G.E.P.

FRAMING PLAN
FAI 72 OVER ILL. RTE. 121
8 ILL. CENT. GULF RR.
MACON COUNTY
SEC. 58-63HVB
STA. 724+45.63

STATE OF ILLINOIS
DEPARTMENT OF TRANSPORTATION

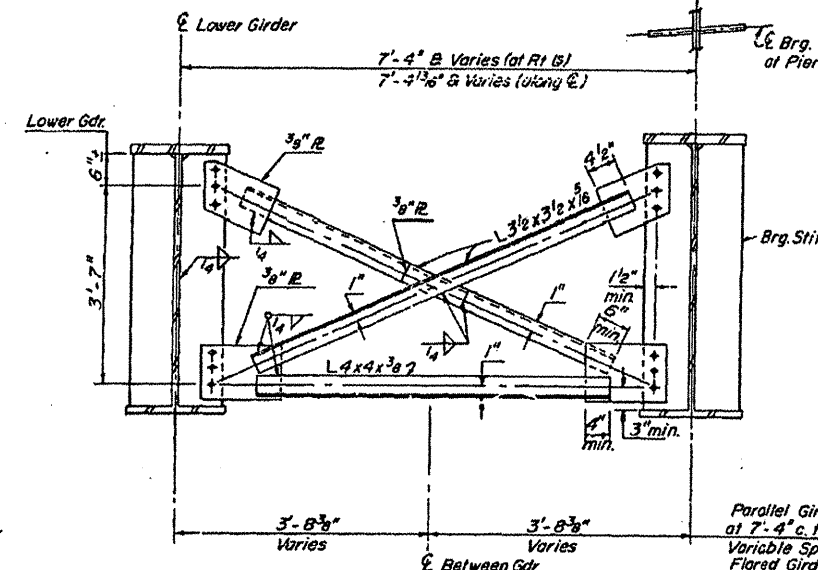
ROUTE NO.	SECTION	COUNTY	TOTAL SHEETS	SHEET NO.	SHEET NO. 15
A.I.L.	58-63HVB	MACON	27	54	26 SHEETS
FED. ROAD DIST. NO. 7		BLVD.	FED. AID PROJECT		



CROSS FRAME F

No. Required = 52 ea. for 7'-4" Gdr. Spa.
16 ea. for Flared Gdrs.

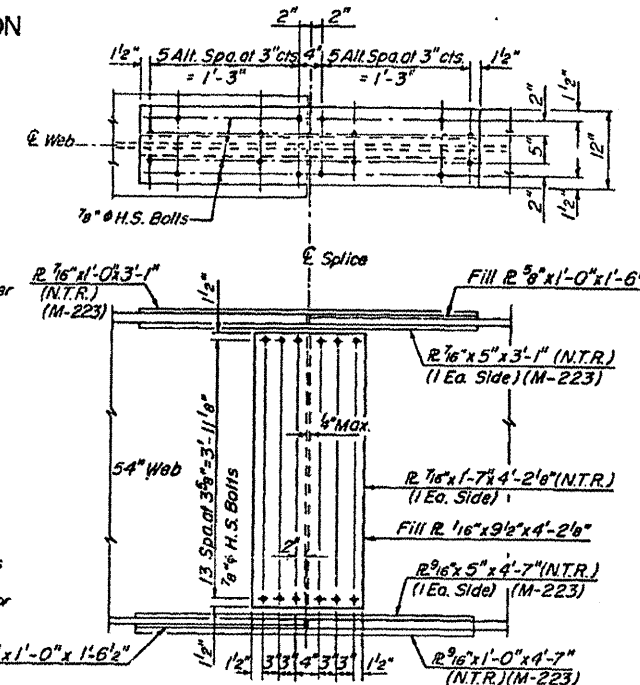
Bolts 3/4" φ
Open Holes 1 1/16" φ
1 1/2" φ holes in gusset R.s for 3/4" φ bolts
Hardened washers shall be required over holes in angles.



CROSS FRAME F1 (Piers) 1/2"

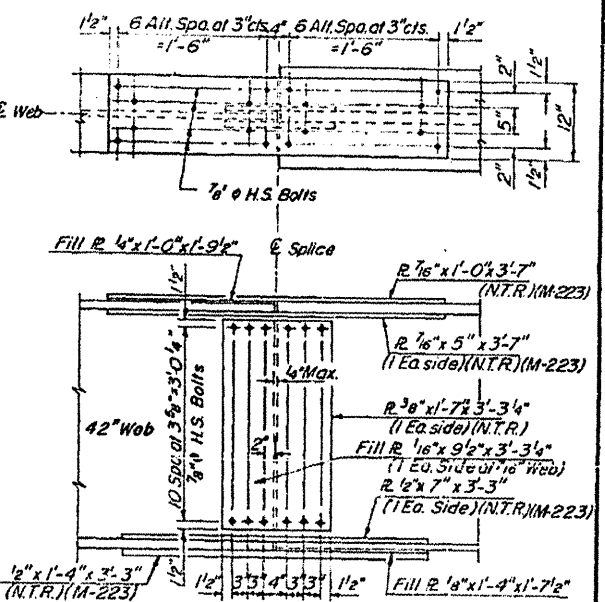
No. Required = 26 ea. for 7'-4" Gdr. Spa.
8 ea. for Flared Gdrs.

Bolts 3/4" φ
Open Holes 1 1/16" φ
1 1/2" φ holes in gusset R.s for 3/4" φ bolts
Hardened washers shall be required over holes in gusset R.s.



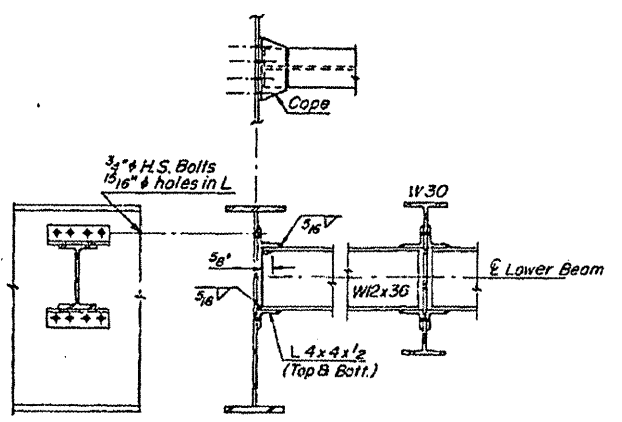
FIELD SPLICE NO. 2

Note: All bolts to be 7/8" φ H.S. Bolts

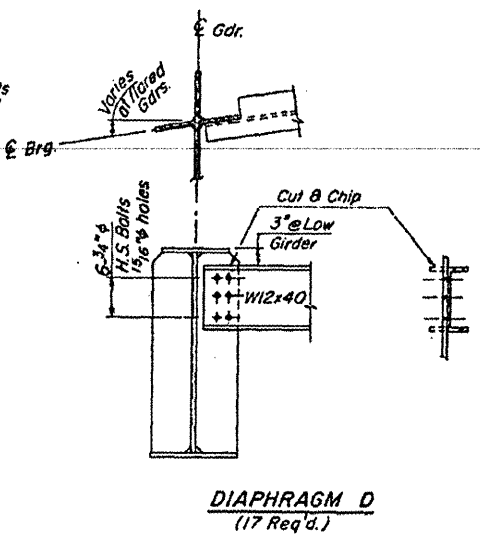


FIELD SPLICE NO. 1

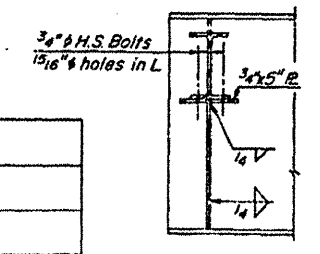
A.S.A. Class 2 Fil 6 Threads per inch



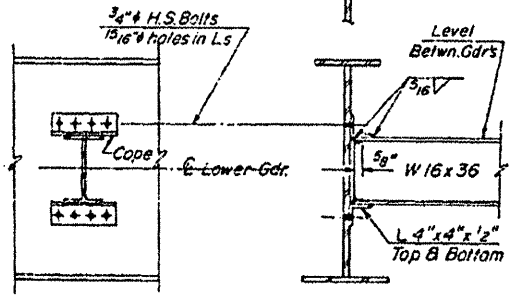
DIAPHRAGM D3
(17 Req'd.)



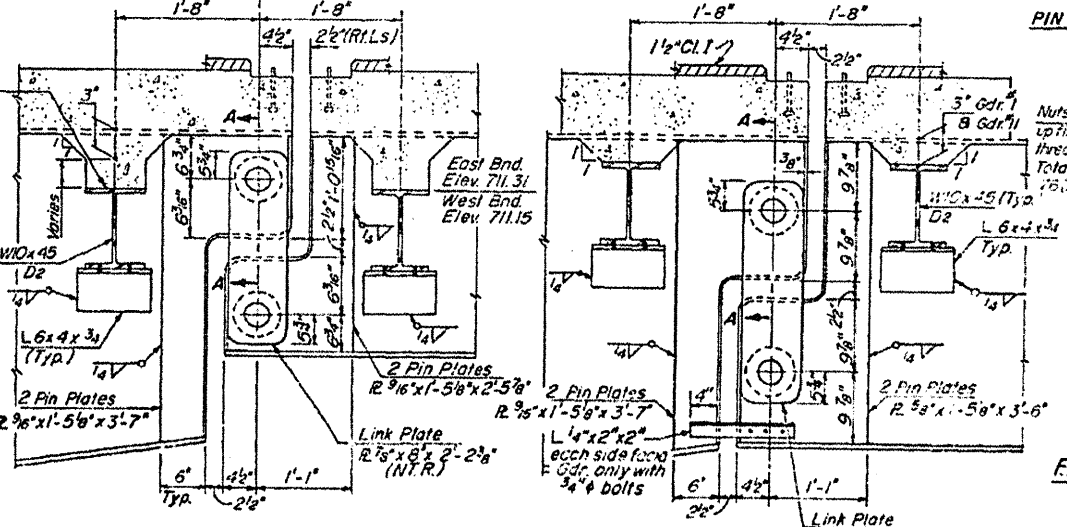
DIAPHRAGM D
(17 Req'd.)



DIAPHRAGM D2 (N. Abuts. & Link Loc.)
(51 Req'd.)



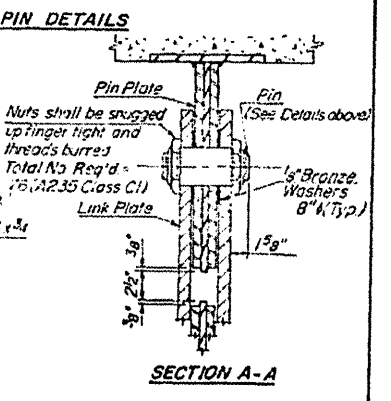
DIAPHRAGM D1
(51 Req'd.)



INTERIOR GIRDERS

LINK CONNECTION

EXTERIOR GIRDERS



SECTION A-A

STRUCTURAL STEEL
FA.I 72 OVER ILL. RTE. 121
& ILL. CENT. GULF RR.
MACON COUNTY
SEC. 58-63HVB
STA. 724+45.63

DESIGNED	D.V.K.
CHECKED	G.E.P.
DRAWN	J.T.
CHECKED	G.E.P. 3/75

STATE OF ILLINOIS
DEPARTMENT OF TRANSPORTATION

ROUTE NO.	SECTION	COUNTY	TOTAL SHEETS	SHEET NO.
F.A.I.-72	58-63HVB	MACON	27	53
FED. ROAD DIST. NO. 7		ILLINOIS	FED. AID PROJECT	

SHEET NO. 14
26 SHEETS

INTERIOR GIRDER REACTION TABLE

	S. Abut.	Pier 1	Pier 2	*N. Abut. Int.	N. Abut. Ext.
R _e (K)	42.9	192.4	101.1	21.5	20.6
R _i (K)	42.3	75.3	53.0	34.3	29.7
Imp (K)	9.5	15.9	15.9	10.3	8.9
R total (K)	94.7	283.6	170.0	66.1	59.2

*Reaction at link same as N. Abut.

TOP OF WEB ELEVATIONS

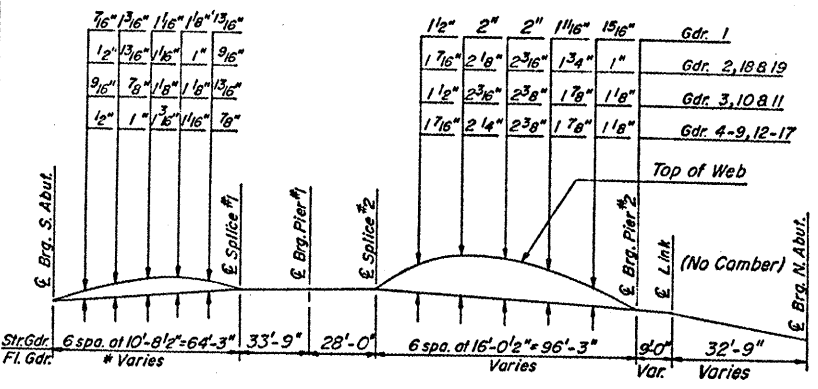
Gdr.	Loc.	¢ Brg. S. Abut.	¢ Splice No. 1	¢ Brg. Pier No. 1	¢ Splice No. 2	¢ Brg. Pier No. 2	¢ Link	¢ Brg. N. Abut.
1	711.83	711.92	711.88	711.85	711.39	711.35	711.12	
2	711.92	711.96	711.94	711.92	711.52	711.48	711.31	*
3	712.02	712.08	712.06	712.04	711.66	711.62	711.45	*
4	712.17	712.23	712.21	712.20	711.80	711.77	711.59	*
5	712.33	712.38	712.37	712.35	711.95	711.91	711.74	*
6	712.47	712.52	712.50	712.49	712.08	712.04	711.87	*
7	712.59	712.64	712.62	712.60	712.19	712.15	711.98	*
8	712.54	712.59	712.56	712.54	712.13	712.09	711.92	*
9	712.42	712.47	712.44	712.42	712.01	711.97	711.79	*
10	712.27	712.31	712.28	712.25	711.85	711.81	711.59	*
11	712.04	712.06	712.02	711.98	711.55	711.51	711.28	*
12	712.19	712.22	712.18	712.15	711.70	711.65	711.46	*
13	712.35	712.37	712.33	712.30	711.84	711.80	711.61	*
14	712.49	712.51	712.47	712.44	711.98	711.93	711.74	*
15	712.61	712.62	712.58	712.55	712.09	712.04	711.85	*
16	712.58	712.59	712.55	712.51	712.05	712.00	711.81	*
17	712.47	712.47	712.43	712.39	711.93	711.88	711.69	*
18	712.38	712.36	712.31	712.26	711.76	711.72	711.51	*
19	712.29	712.25	712.18	712.12	711.60	711.55	711.29	*

* Top of W30 Beam

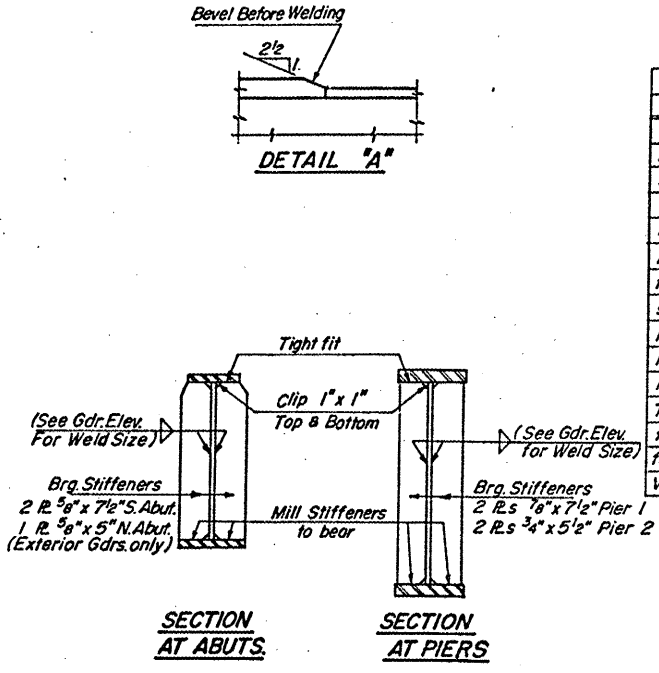
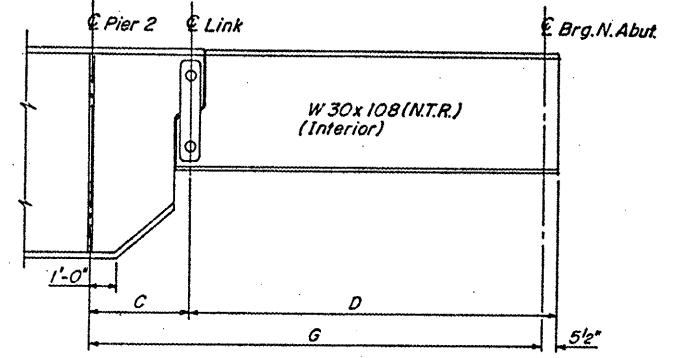
INTERIOR GIRDER MOMENT TABLE

	0.4 Span 1	Pier 1	0.6 Span 2	Pier 2	0.6 Span 3	0.6 Span 3
I _s (in. ⁴)	14340	4115	25984	20051	4470	7066
I _c (in. ⁴)	39654		66933			
S _s (in. ³)	805	1449	1091	723	300	328
S _c (in. ³)	1099		1506			
Q (K/I)	0.927	1.442	0.960	1.330	1.312	1.253
M ₂ (I'K)	406.5	2221.2	1014.1	240.8	175.9	169.5
f _s (ksi)	6.06	18.39	11.15	4.00	7.04	6.20
s (K/I)	0.404		0.421			
M _s (I'K)	250.6		508.6			
M _¢ (I'K)	789.1	811.9	1123.8	271.2	231.0	229.5
M _{imp} (I'K)	176.9	171.9	225.5	81.3	69.3	68.8
Total (I'K)	1216.6	983.8	1857.9	352.5	300.3	298.3
f _s (¢¢+I)	13.29	8.14	14.8	5.85	12.01	10.90
f _s Total (ksi)	19.35	26.53	25.95	9.85	19.05	17.10
VR (K)	55.5		54.0			

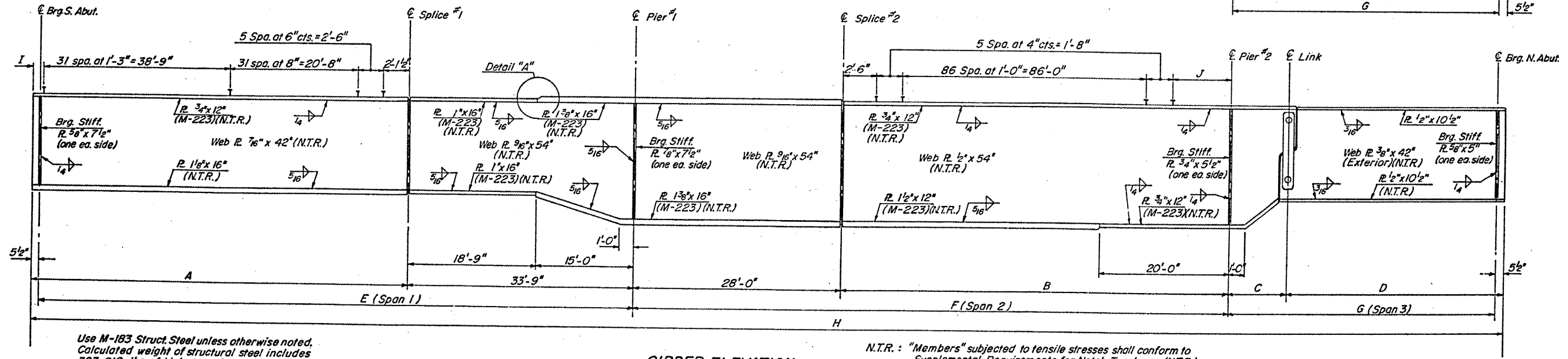
I_s and S_s are the moment of inertia and section modulus of the steel section.
I_c and S_c are the moment of inertia and section modulus of the composite section used in computing f_s.
VR is the maximum ¢ + Impact shear range in span used to determine shear connector spacing.



CAMBER DIAGRAM
*See Girder Dimension Table



SECTION AT ABUTS
SECTION AT PIERS



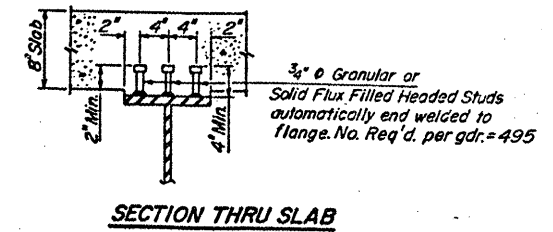
Use M-183 Struct. Steel unless otherwise noted.
Calculated weight of structural steel includes 383,210 lbs. of high strength steel (M-223).

N.T.R.: "Members" subjected to tensile stresses shall conform to Supplemental Requirements for Notch Toughness (N.T.R.)

GIRDER ELEVATION

GIRDER DIMENSIONS

Gdr.	Dim.	A	B	C	D	E	F	G	H	I	J
Gdr. 1		64'-5 3/8"	95'-11 1/4"	8'-11 3/4"	33'-1 1/2"	97'-9 1/16"	123'-11 1/4"	41'-7 3/4"	264'-3 1/8"	5 1/8"	4'-1 1/4"
Gdr. 2		64'-6 5/16"	96'-1 1/16"	8'-11 7/8"	33'-2"	97'-10 7/16"	124'-1 1/8"	41'-8 3/8"	264'-6 7/8"	6 7/8"	4'-3 1/8"
Gdr. 3-17		64'-8 1/2"	96'-3"	9'-0"	33'-2 1/2"	98'-0"	124'-3"	41'-9"	264'-1 1/8"	8"	4'-5"
Gdr. 18		64'-11"	96'-6 1/8"	9'-0 1/4"	33'-3 3/8"	98'-2 1/2"	124'-6 1/8"	41'-10 1/8"	265'-5 1/8"	10 1/2"	4'-8 1/8"
Gdr. 19		65'-1 1/16"	96'-9 3/8"	9'-0 1/2"	33'-4 1/4"	98'-5 3/8"	124'-9 3/8"	41'-11 1/4"	266'-1 1/8"	1'-13 1/16"	4'-11 3/8"



SECTION THRU SLAB

DESIGNED	D.V.K.
CHECKED	G.E.P.
DRAWN	J.T.
CHECKED	G.E.P. 3/75

STRUCTURAL STEEL
FAI 72 OVER ILL. RTE. 121
B ILL. CENT. GULF RR.
MACON COUNTY
SEC. 58-63HVB
STA. 724+45.63

9A

