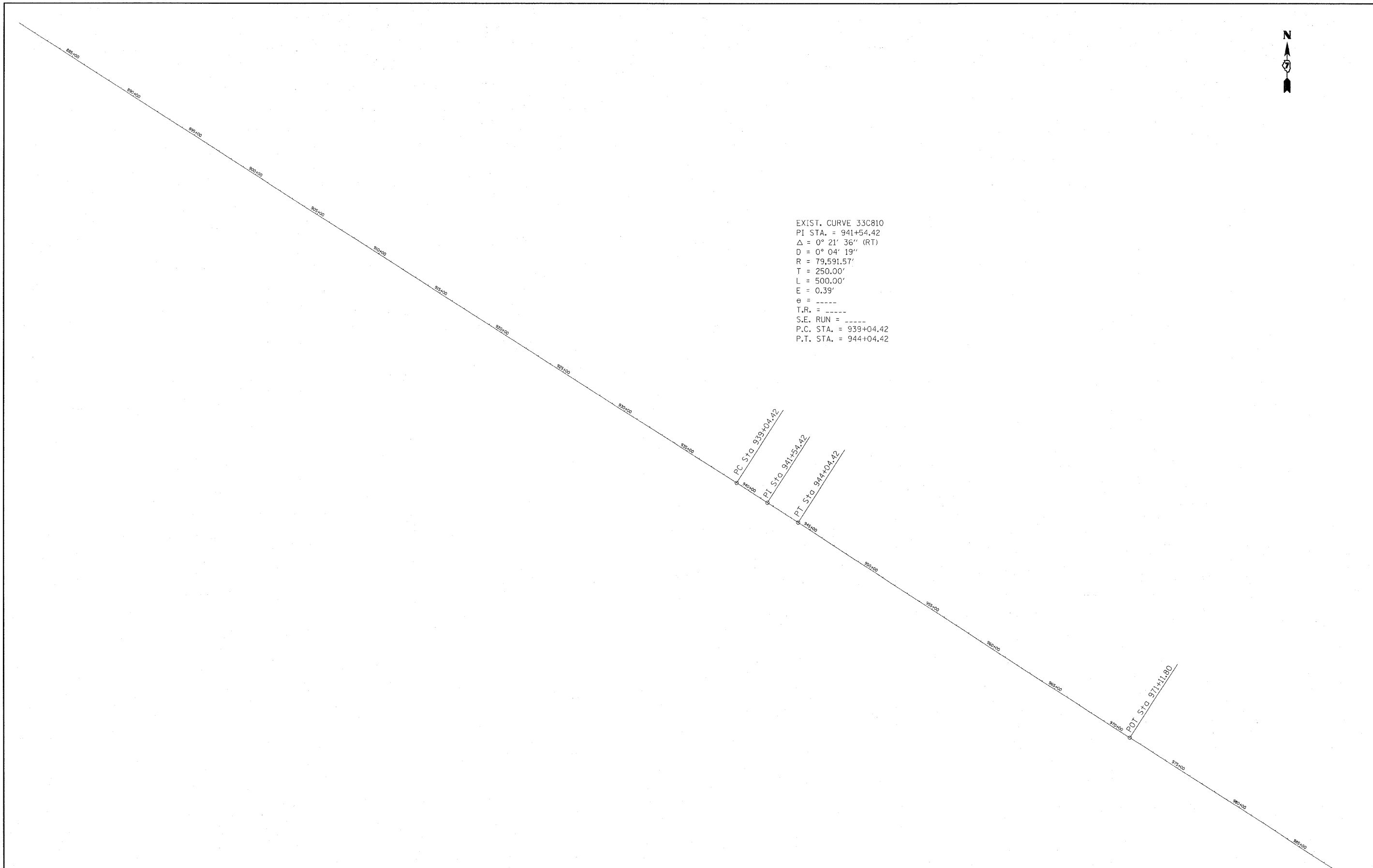


EXIST. CURVE 33C810
 PI STA. = 941+54.42
 Δ = 0° 21' 36" (RT)
 D = 0° 04' 19"
 R = 79,591.57'
 T = 250.00'
 L = 500.00'
 E = 0.39'
 e = -----
 T.R. = -----
 S.E. RUN = -----
 P.C. STA. = 939+04.42
 P.T. STA. = 944+04.42



FILE NAME =	USER NAME = swartzw	DESIGNED -	REVISED -	STATE OF ILLINOIS DEPARTMENT OF TRANSPORTATION	PLAN ALIGNMENT			F.A.P. RTE.	SECTION	COUNTY	TOTAL SHEETS	SHEET NO.
c:\pw_work\pwsdot\swartzw\d8241038\d77	606-shr-plan.dgn	DRAWN -	REVISED -		SCALE: NA	SHEET NO. 3 OF 6 SHEETS	STA. 881+00.00 TO STA. 987+00.00	95	(5,6)RS-2A	JASPER	19	11
	PLOT SCALE = 300.0000 ' / IN.	CHECKED -	REVISED -					CONTRACT NO. 74506				
	PLOT DATE = 12/10/2010	DATE -	REVISED -					ILLINOIS FED. AID PROJECT				