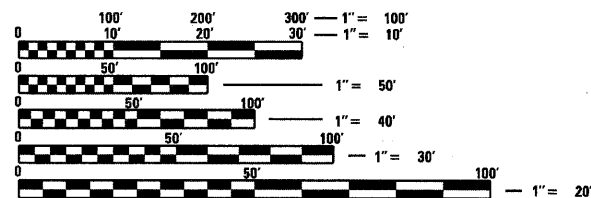


INDEX OF SHEETS

SHEET NO.	DESCRIPTION
1	COVER SHEET
2	GENERAL NOTES
3, 3A	SUMMARY OF QUANTITIES
4-6	TYPICAL SECTIONS
7-10	SCHEDULE OF QUANTITIES
11-12	ALIGNMENT, TIES AND BENCHMARKS AND HVC
13-16	REMOVAL PLANS
17-21	PLAN AND PROFILE SHEETS
22-24	SUGGESTED MAINTENANCE OF TRAFFIC PLANS
25-26	SWPPP OMITTED
27	EROSION AND SEDIMENT CONTROL PLANS
28-32	DRAINAGE AND UTILITIES PLANS
33-36	PLAT OF HIGHWAYS
37-39	PAVEMENT MARKING, SIGNING AND LANDSCAPING PLANS
40-41	MISCELLANEOUS DETAILS
42-50	CROSS SECTIONS

HIGHWAY STANDARDS

STANDARD	DESCRIPTION
000001-06	STANDARD SYMBOLS, ABBREVIATIONS AND PATTERNS
280001-05	TEMPORARY EROSION CONTROL SYSTEMS
482001-02	HMA SHOULDER ADJACENT TO FLEXIBLE PAVEMENT
482006-03	HMA SHOULDER ADJACENT TO RIGID PAVEMENT
601001-04	SUB-SURFACE DRAINS
602001-02	CATCH BASIN, TYPE A
602011-02	CATCH BASIN, TYPE C
602301-03	INLET, TYPE A
602401-03	MANHOLE, TYPE A
602601-02	PRECAST REINFORCED CONCRETE FLAT SLAB TOP
602701-02	MANHOLE STEPS
604001-03	FRAME AND LIDS, TYPE 1
604006-04	FRAME AND GRATE TYPE 3
604066-02	FRAME AND LID, TYPE 15
604101-01	MEDIAN INLET FOR 24" (600 mm) REINFORCED CONCRETE PIPE
606001-04	CONCRETE CURB TYPE B AND COMBINATION CONCRETE CURB AND GUTTER
606201-02	TYPE B GUTTER (INLET, OUTLET, AND ENTRANCE)
606301-04	PC CONCRETE ISLANDS AND MEDIANS
664001-02	CHAIN LINK FENCE
666001-01	RIGHT-OF-WAY MARKERS
701101-02	OFF-ROAD OPERATIONS, MULTILANE, 4.5M (15') TO 600 MM (24") FROM PAVEMENT EDGE
701106-02	OFF-ROAD OPERATIONS, MULTILANE, MORE THAN 4.5M (15') AWAY
701421-03	LANE CLOSURE, MULTILANE, DAY OPERATIONS ONLY, FOR SPEEDS ≥ 45 MPH TO 55 MPH
701426-04	LANE CLOSURE, MULTILANE, INTERMITTENT OF MOVING OPERATION, FOR SPEEDS ≥ 45 MPH
701701-07	URBAN LANE CLOSURE, MULTILANE INTERSECTION
701901-01	TRAFFIC CONTROL DEVICES
720001-01	SIGN PANEL MOUNTING DETAILS
720006-02	SIGN PANEL ERECTION DETAILS
728001-01	TELESCOPING STEEL SIGN SUPPORT
731001-01	BASE FOR TELESCOPING STEEL SIGN SUPPORT
780001-02	TYPICAL PAVEMENT MARKINGS
781001-03	TYPICAL APPLICATIONS RAISED REFLECTIVE PAVEMENT MARKERS



FULL SIZE PLANS HAVE BEEN PREPARED USING STANDARD ENGINEERING SCALES. REDUCED SIZED PLANS WILL NOT CONFORM TO STANDARD SCALES. IN MAKING MEASUREMENTS ON REDUCED PLANS, THE ABOVE SCALES MAY BE USED.

J.U.L.I.E.
JOINT UTILITY LOCATION INFORMATION FOR EXCAVATION
1-800-892-0123
OR 811

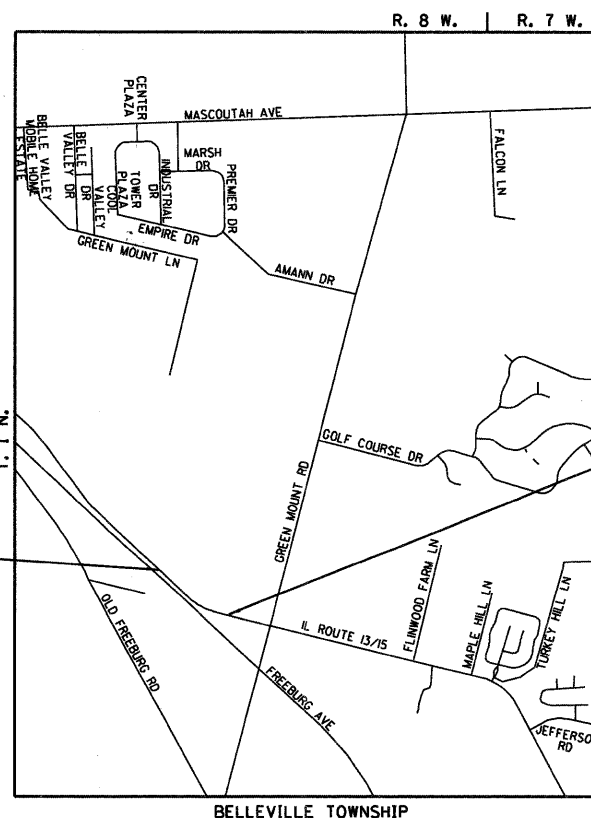
PROJECT ENGINEER: PATTI LEBEAU, (618) 346-3179
PROJECT MANAGER: CHERYL KEPLAR, (618) 346-3186

CONTRACT NO. 76D15

STATE OF ILLINOIS
DEPARTMENT OF TRANSPORTATION
DIVISION OF HIGHWAYS
**PROPOSED
HIGHWAY PLANS**

F.A.P. ROUTE 103 (IL 13/15)
SECTION 27-1-N

~~PROJECT.~~
IL ROUTE 13 /15 AND ECKERT'S FARM
INTERSECTION IMPROVEMENT
ST. CLAIR COUNTY
C-98-079-09



PROJECT BEGINS
STA. 133+85.3
LATITUDE: 38.47862
LONGITUDE: 89.94415

PROJECT ENDS
STA. 145+30
LATITUDE: 38.47766
LONGITUDE: 89.94033

APPROX. MAP SCALE:
1" = 1.2 MILES

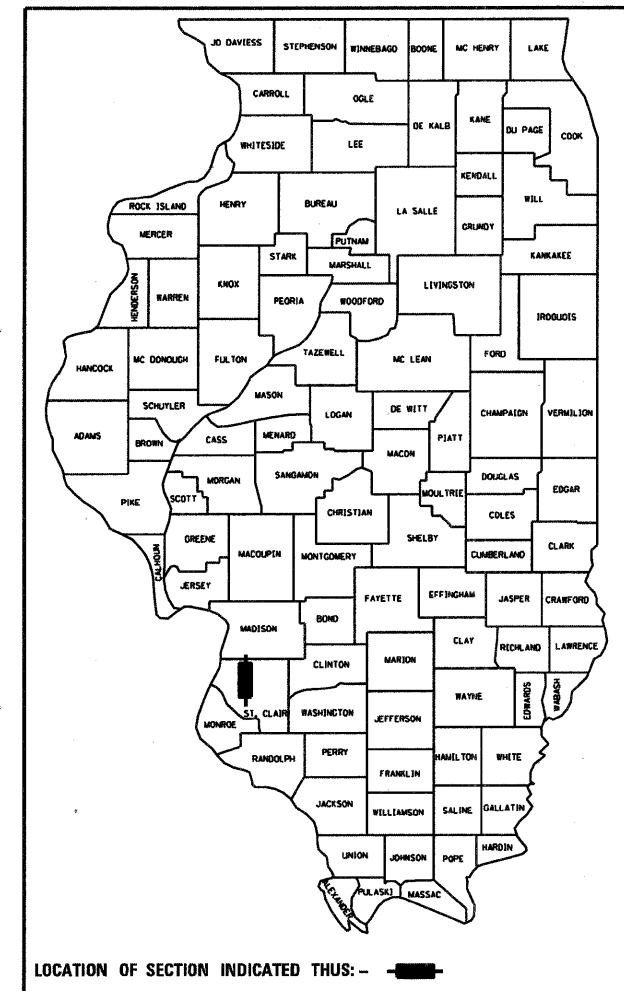
GROSS LENGTH OF PROJECT = 1,144.7 LIN. FT. = 0.22 MILES
NET LENGTH OF PROJECT = 1,144.7 LIN. FT. = 0.22 MILES



Expires 11-30-11

F.A.P. RTE.	SECTION	COUNTY	TOTAL SHEETS	SHEET NO.
103	27-1-N	ST. CLAIR	51	1
FED. ROAD DIST. NO.	ILLINOIS	CONTRACT NO. 76D15		

D-98-076-09



LOCATION OF SECTION INDICATED THIS: - [black rectangle] -

STATE OF ILLINOIS
DEPARTMENT OF TRANSPORTATION
DIVISION OF HIGHWAYS

SUBMITTED December 22 2010
Mary C. Jamel
DEPUTY DIRECTOR OF HIGHWAYS, REGION FIVE ENGINEER

February 4 2011
Scott E. Stitt P.E.
acting ENGINEER OF DESIGN AND ENVIRONMENT

February 4 2011
Christine M. Reed
DIRECTOR OF HIGHWAYS, CHIEF ENGINEER

PRINTED BY THE AUTHORITY
OF THE STATE OF ILLINOIS