

IL 13 /15
STAGE I - TRAFFIC STAGING TYPICAL

STAGE I - CONSTRUCT ENTRANCE AND SHOULDER IMPROVEMENTS

CHANGEABLE MESSAGE SIGNS WILL BE USED ON IL 13/15 EAST AND WEST OF THE IMPROVEMENT AND ON GREEN MOUNT RD NORTH AND SOUTH OF IL 13/15 TO NOTIFY THE PUBLIC OF THE ENTRANCE CLOSURES INTO ECKERT'S COUNTRY STORE AND FARMS.

INSTALL TRAFFIC CONTROL PER STANDARD 701421 AND THESE TRAFFIC CONTROL PLANS REDUCING TRAFFIC TO ONE INSIDE LANE FOR DAY OPERATIONS ONLY.

EXISTING ENTRANCE AT STA. 137+50 RT MUST REMAIN OPEN DURING STAGE I. THREE ENTRANCES AT STA. 142+25, 143+75, AND 145+00 LT SHALL BE CLOSED.

TWO LANES OF TRAFFIC EASTBOUND AND WESTBOUND SHALL BE OPERATIONAL AND CLEAR AT THE END OF EACH WORKDAY. NO OVERNIGHT CLOSURES WILL BE ALLOWED.

STAGE II - CONSTRUCT MEDIAN IMPROVEMENTS (COMPLETED IN 2 PHASES)

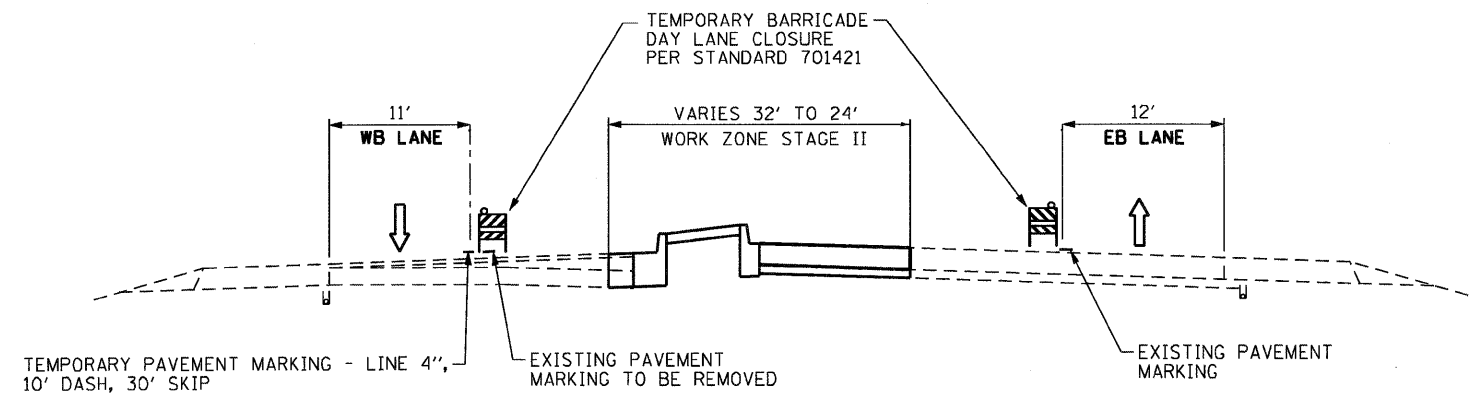
RELOCATE TRAFFIC CONTROL PER STANDARD 701421 AND THESE TRAFFIC CONTROL PLANS REDUCING TRAFFIC TO ONE OUTSIDE LANE FOR DAY OPERATIONS ONLY.

NEW CITY STREET TO REMAIN CLOSED DURING STAGE II WORK.

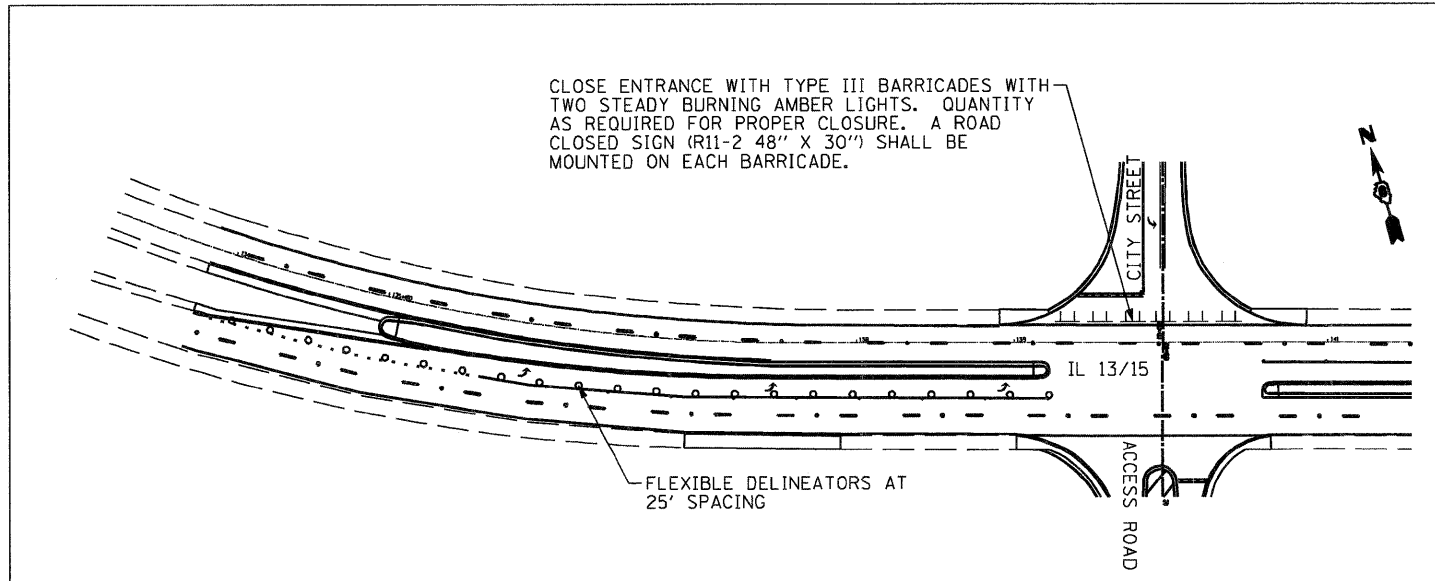
CONSTRUCT STAGE II MEDIAN IMPROVEMENTS IN TWO PHASES TO MAINTAIN ACCESS TO SOUTH ENTRANCES.

EXISTING PAVEMENT MARKING SHALL BE REMOVED AND REPLACED AT THE COMPLETION OF STAGE II PHASE II USING STANDARD 701426 FOR TRAFFIC CONTROL.

TWO LANES OF TRAFFIC EASTBOUND AND WESTBOUND SHALL BE OPERATIONAL AND CLEAR AT THE END OF EACH WORKDAY. NO OVERNIGHT CLOSURES WILL BE ALLOWED.



IL 13 /15
STAGE II - TRAFFIC STAGING TYPICAL



CLOSE ENTRANCE WITH TYPE III BARRICADES WITH TWO STEADY BURNING AMBER LIGHTS. QUANTITY AS REQUIRED FOR PROPER CLOSURE. A ROAD CLOSED SIGN (R11-2 48" X 30") SHALL BE MOUNTED ON EACH BARRICADE.

TRAFFIC CONTROL FOR ROAD CLOSURE
NTS
SEE SPECIAL PROVISIONS

FILE NAME = 0876015-sh1-staging1.dgn	USER NAME = dvoznarski	DESIGNED -	REVISED -	STATE OF ILLINOIS DEPARTMENT OF TRANSPORTATION	SUGGESTED MAINTENANCE OF TRAFFIC SECTIONS AND NOTES			F.A.I. RTE.	SECTION	COUNTY	TOTAL SHEETS	SHEET NO.
	PLOT SCALE = 15.00' / IN.	DRAWN - DMW	REVISED -					103	27-1-N	ST. CLAIR	50	22
	PLOT DATE = 9/14/2010	CHECKED -	REVISED -					CONTRACT NO. 76015				
	DATE = 7/9/2010	REVISED -		SCALE: NONE	SHEET NO. 1 OF 3 SHEETS	STA.	TO STA.	FED. ROAD DIST. NO.	ILLINOIS FED. AID PROJECT			