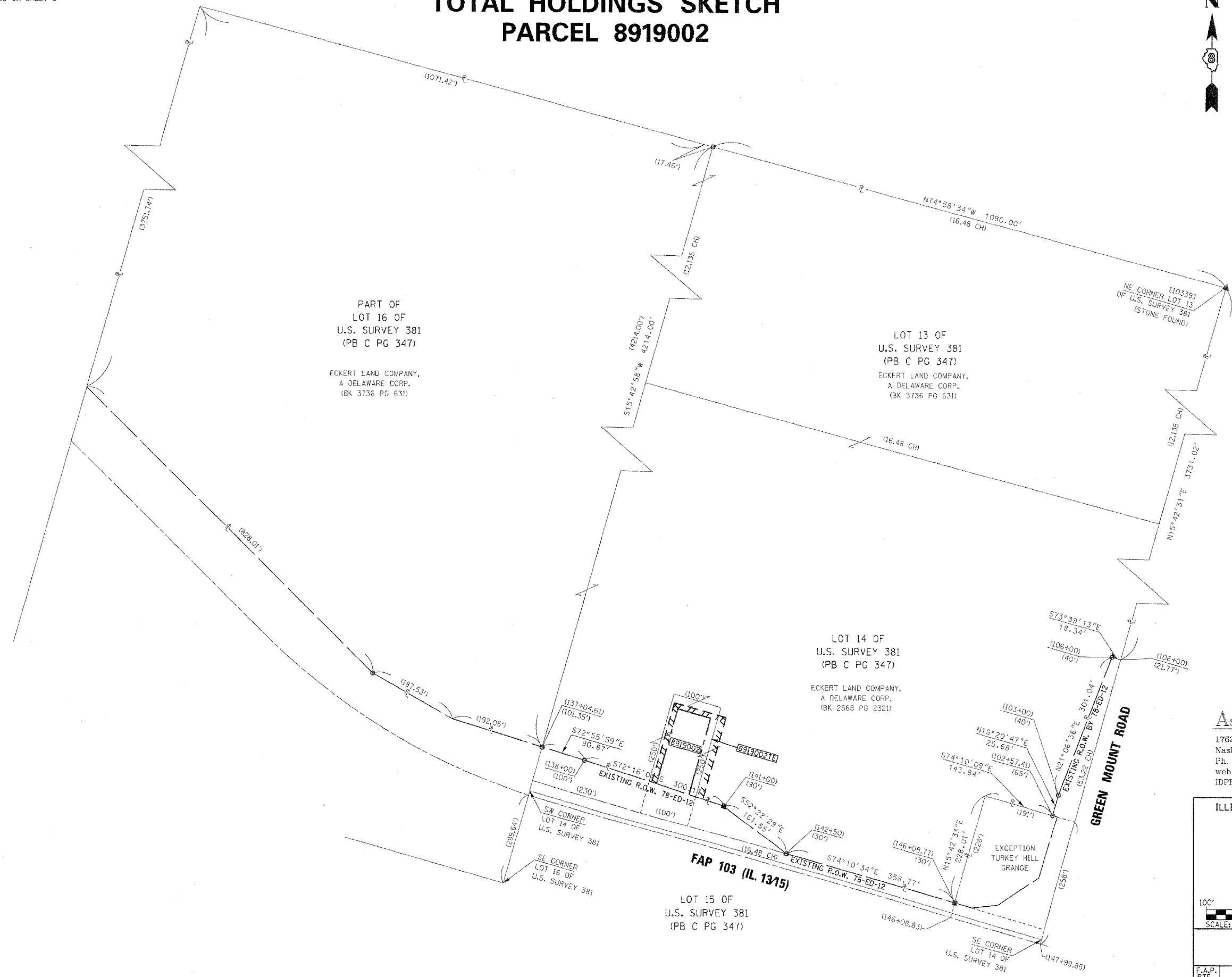


SEE BASIS OF COORDINATES AND BEARINGS STATEMENT ON SHEET 2  
SEE COORDINATE TABLES ON SHEET 2

# TOTAL HOLDINGS SKETCH PARCEL 8919002



SPACE RESERVED FOR RECORDING OFFICER



PART OF  
LOT 16 OF  
U.S. SURVEY 381  
(PB C PG 347)  
  
ECKERT LAND COMPANY,  
A DELAWARE CORP.  
(BK 3736 PG 631)

LOT 13 OF  
U.S. SURVEY 381  
(PB C PG 347)  
  
ECKERT LAND COMPANY,  
A DELAWARE CORP.  
(BK 3736 PG 631)

LOT 14 OF  
U.S. SURVEY 381  
(PB C PG 347)  
  
ECKERT LAND COMPANY,  
A DELAWARE CORP.  
(BK 2568 PG 2321)

LOT 15 OF  
U.S. SURVEY 381  
(PB C PG 347)

**ASSOCIATED PROFESSIONALS, INC.**  
17625 Mockingbird Road, P.O. Box 311  
Nashville, Illinois 62263  
Ph. 618-478-9000 Fax 618-478-9001  
web: www.apisurvey.com  
IDPR Design Firm License No. 184-001303

ILLINOIS DEPARTMENT OF TRANSPORTATION  
**PLAT OF HIGHWAYS**  
FAP ROUTE 103 (IL 13/15)  
SECTION 27-1-N  
ST. CLAIR COUNTY  
JOB NO. R-98-019-09  
TOTAL HOLDING SKETCH

SCALE: 1" = 100' SHEET 3 OF 4

ILLINOIS DEPARTMENT OF TRANSPORTATION DIVISION OF HIGHWAYS/REGION 5/DISTRICT 8 1102 EASTPORT PLAZA DRIVE COLLINGSVILLE, ILLINOIS 62234-6198				
F.A.P. RTE.	SECTION	COUNTY	TOTAL SHEETS	SHEET NO.
103	27-1-N	ST. CLAIR	50	35
COMPLETION DATE OF FIELD WORK PERFORMED				CONTRACT NO. 76D15
LAND SURVEY: 3/10/10		ROW STAKING:		
FED. ROAD DIST. NO. 8 ILLINOIS FED. AID PROJECT				