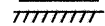

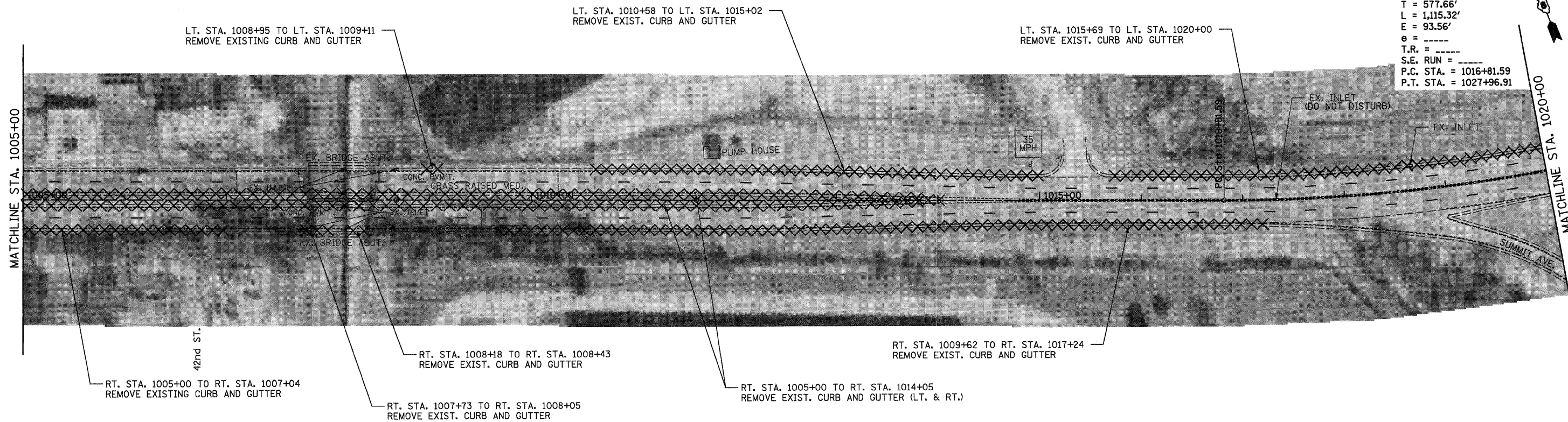


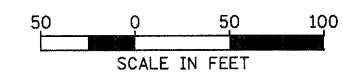
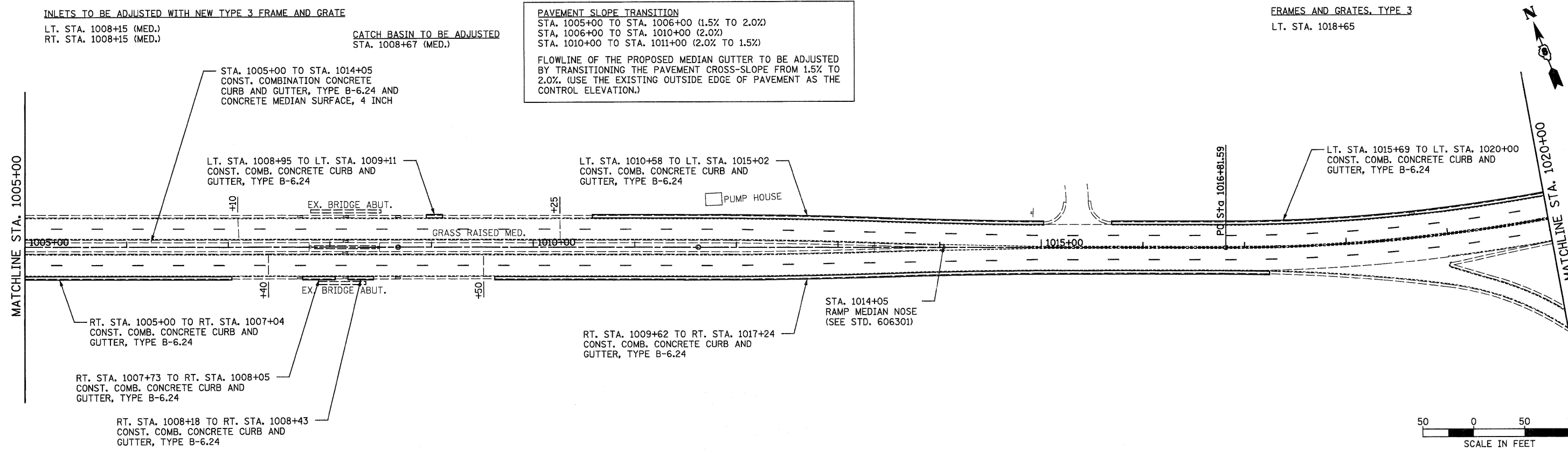
LEGEND

-  MILLING AND RESURFACING LIMITS
-  REMOVAL ITEMS

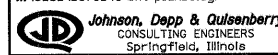
PROP. CURVE C11
 PI STA. = 1022+59.24
 $\Delta = 36^\circ 48' 01''$ (LT.)
 $D = 3^\circ 17' 58''$
 $R = 1,736.48'$
 $T = 577.66'$
 $L = 1,115.32'$
 $E = 93.56'$
 $e = \text{-----}$
 $T.R. = \text{-----}$
 $S.E. \text{ RUN} = \text{-----}$
 $P.C. \text{ STA.} = 1016+81.59$
 $P.T. \text{ STA.} = 1027+96.91$



EXISTING & REMOVAL ITEMS



PROPOSED IMPROVEMENTS

FILE NAME =	USER NAME = SJS	DESIGNED -	REVISED -	STATE OF ILLINOIS DEPARTMENT OF TRANSPORTATION	ST. CLAIR AVE./LINCOLN TRAIL PLAN SHEET			F.A.U. RTE. 9166	SECTION 34-IRS-3	COUNTY ST. CLAIR	TOTAL SHEETS 87	SHEET NO. 30
...oad\0876098-aht-plan\03.dgn		DRAWN -	REVISED -		SCALE: SHEET NO. OF SHEETS STA. 1005+00.00 TO STA. 1020+00.00			CONTRACT NO. 76D96				
	PLOT SCALE = 50.0000' / 1" IN.	CHECKED -	REVISED -		ILLINOIS FED. AID PROJECT							
	PLOT DATE = 12/15/2010 09:35:59	DATE -	REVISED -									