

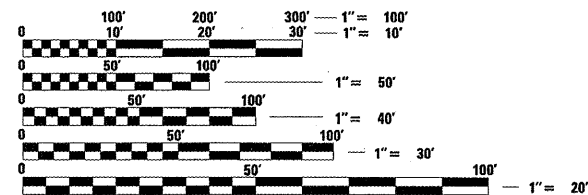
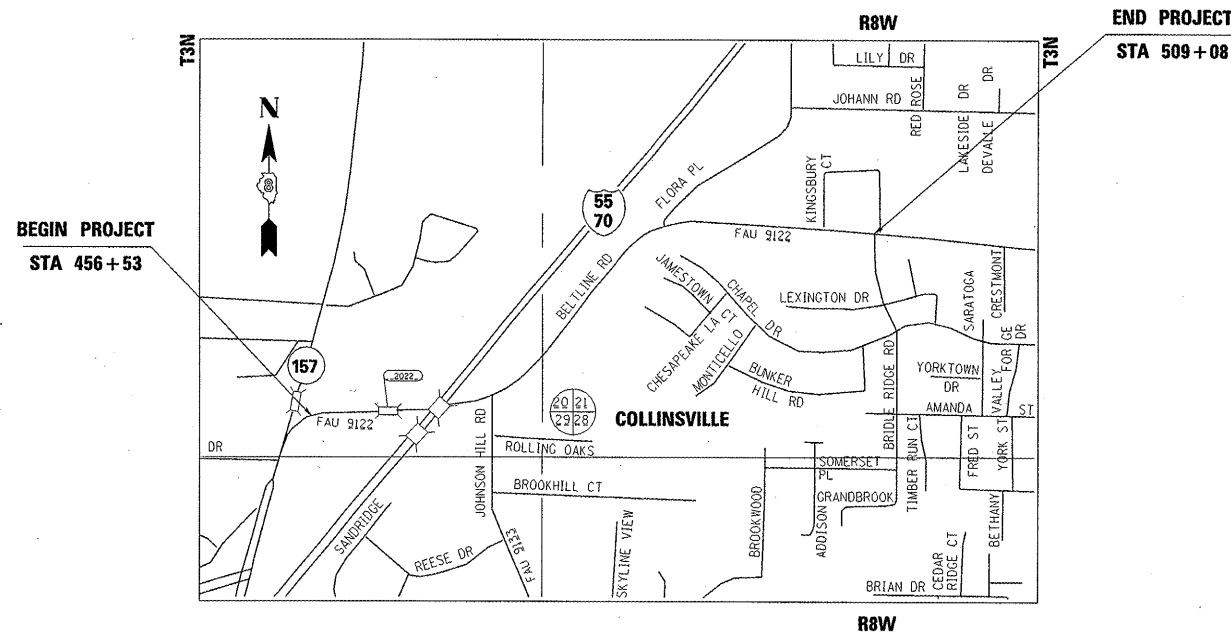
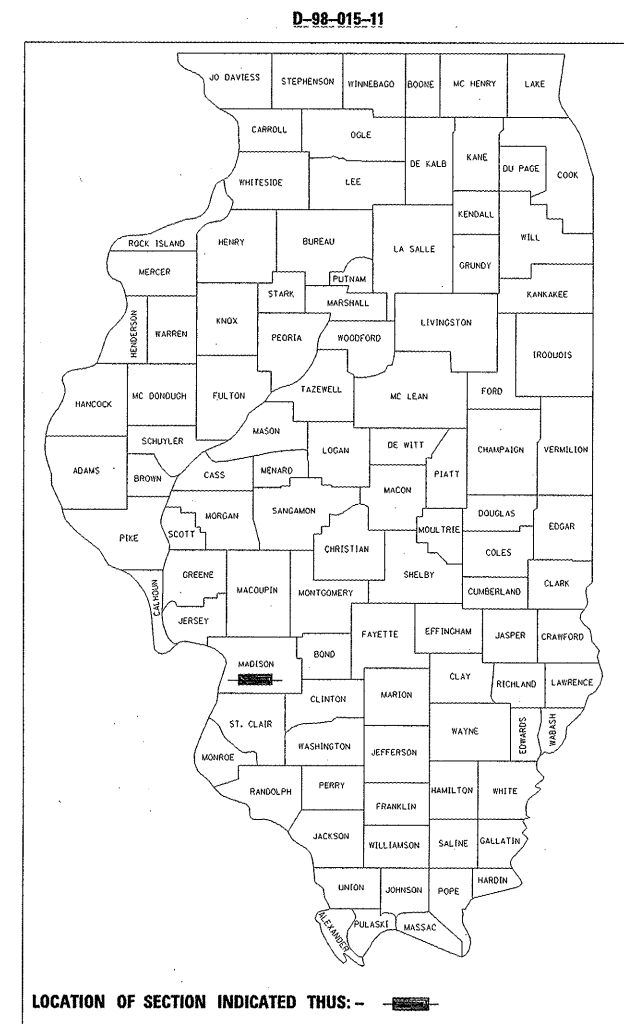
STATE OF ILLINOIS  
 DEPARTMENT OF TRANSPORTATION  
 DIVISION OF HIGHWAYS

**PROPOSED  
 HIGHWAY PLANS**

FAU ROUTE 9122 (BELTLINE ROAD)  
 SECTION 30Z-I-3  
 SAFETY SHOULDERS &  
 RUMBLE STRIPS  
 MADISON COUNTY  
 PROJECT HSIP-9122(008)  
 C-98-014-11

F.A.U. RTE.	SECTION	COUNTY	TOTAL SHEETS	SHEET NO.
9122	30Z-I-3	MADISON	10	1
		ILLINOIS	CONTRACT NO. 76E35	

FOR INDEX OF SHEETS, SEE SHEET NO. 2



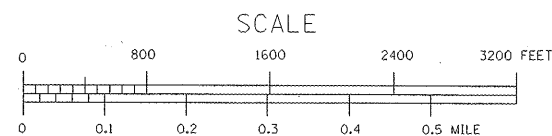
FULL SIZE PLANS HAVE BEEN PREPARED USING STANDARD ENGINEERING SCALES. REDUCED SIZED PLANS WILL NOT CONFORM TO STANDARD SCALES. IN MAKING MEASUREMENTS ON REDUCED PLANS, THE ABOVE SCALES MAY BE USED.

J.U.L.I.E.  
 JOINT UTILITY LOCATION INFORMATION FOR EXCAVATION  
 1-800-892-0123  
 OR 811

PROJECT ENGINEER: TIM PADGETT (618)346-3325  
 PROJECT MANAGER: LIZ BURNSIDE (618)346-3196

CONTRACT NO. 76E35

2006 ADT = 22400  
 2030 ADT = 28400  
 SU = 5.0%  
 MU = 1.2%



GROSS LENGTH = 5255 FT. = 1.00 MILE  
 NET LENGTH = 5255 FT. = 1.00 MILE

STATE OF ILLINOIS  
 DEPARTMENT OF TRANSPORTATION  
 DIVISION OF HIGHWAYS

SUBMITTED December 16 20 10  
*Mary C. Jamme*  
 DEPUTY DIRECTOR OF HIGHWAYS, REGION ENGINEER

February 4 20 11  
*Scott E. Stitt, P.E.*  
 ENGINEER OF DESIGN AND ENVIRONMENT

February 4 20 11  
*Christine M. Reedler*  
 DIRECTOR OF HIGHWAYS, CHIEF ENGINEER

PRINTED BY THE AUTHORITY  
 OF THE STATE OF ILLINOIS