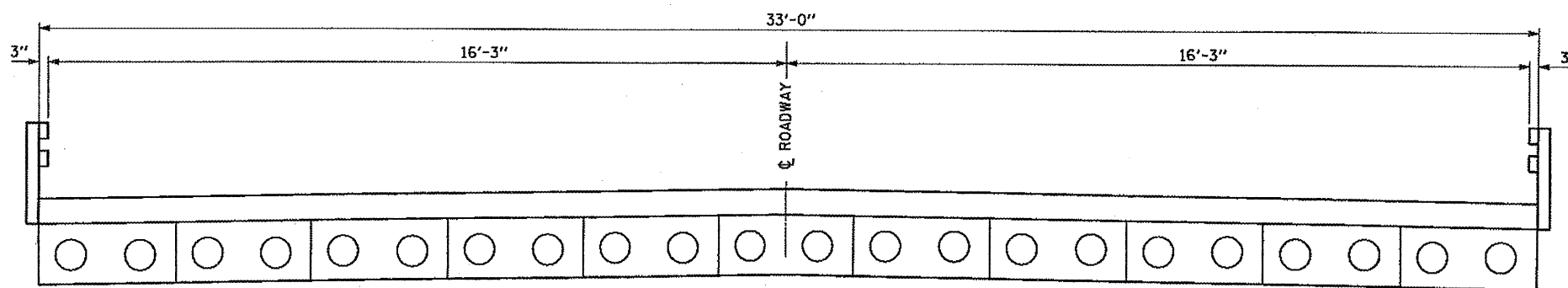


**PLAN VIEW**



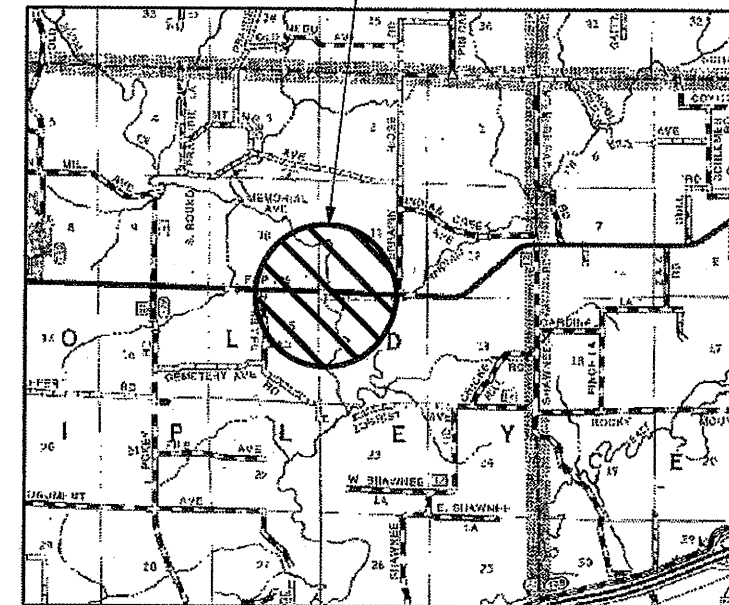
**TOTAL BILL OF MATERIAL**

ITEM	UNIT	TOTAL
CONCRETE SEALER	SQ FT	12,105



**TYPICAL SECTION THRU BRIDGE [A-A]**

BRIDGE #003 0024  
SECTIONS 138BR & 138BR-1



**LOCATION MAP**

FILE NAME =  
P:\18E2166-1\Design\Plans\09 - SN003-0024.dgn

USER NAME = \*USER\*  
PLOT SCALE = 40.0000' / IN.  
PLOT DATE = 12/10/2010

DESIGNED - JAH  
DRAWN - JAH  
CHECKED - WJS  
DATE - 11-2-10

REVISED -  
REVISED -  
REVISED -  
REVISED -

**STATE OF ILLINOIS  
DEPARTMENT OF TRANSPORTATION**

**BRIDGE #003-0024 F.A. ROUTE 67 (IL RTE. 140) OVER SHOAL CREEK  
PLAN & SECTION VIEWS**

SCALE: SHEET NO. OF SHEETS STA. TO STA.

F.A.P. RTE.	SECTION	COUNTY	TOTAL SHEETS	SHEET NO.
VAR	*	BOND	19	9
CONTRACT NO. 76E41				

FED. ROAD DIST. NO. ILLINOIS FED. AID PROJECT  
DISTRICT 8 BRIDGE DECK 2011-1