

STATE OF ILLINOIS
DEPARTMENT OF TRANSPORTATION
DIVISION OF HIGHWAYS
**PROPOSED
BRIDGE DECK SEALS**

F.A. RTE.	SECTION	COUNTY	TOTAL SHEETS	SHEET NO.
VAR		BOND	19	1
FED. ROAD DIST. NO.	ILLINOIS	CONTRACT NO.	76E41	

* * 19 + 1 = 20

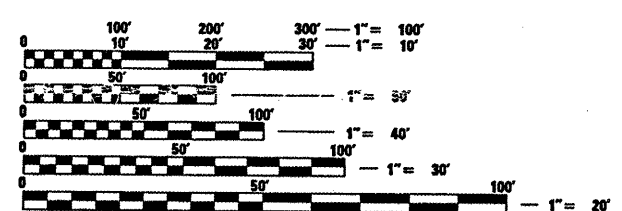
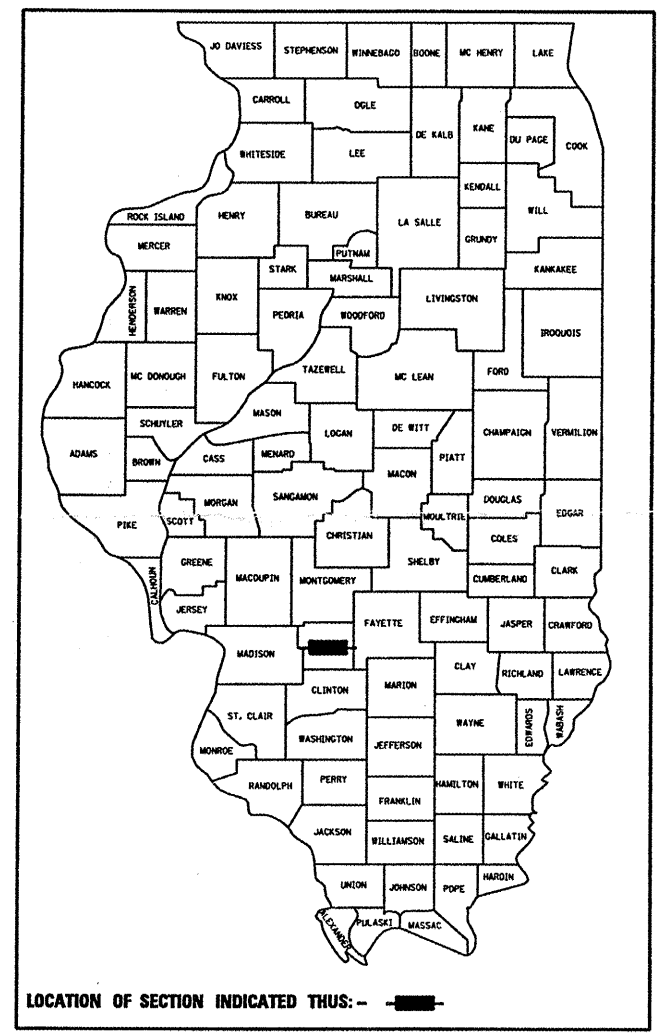
FOR INDEX OF SHEETS, SEE SHEET NO. 2

BRIDGE STRUCTURE NUMBERS

- 003 0016
- 003 0018
- 003 0019
- 003 0024
- 003 0025
- 003 0031
- 003 0047
- 003 0049
- 003 0051
- 003 0056
- 003 0057
- 003 0058
- 003 0059
- 003 0060

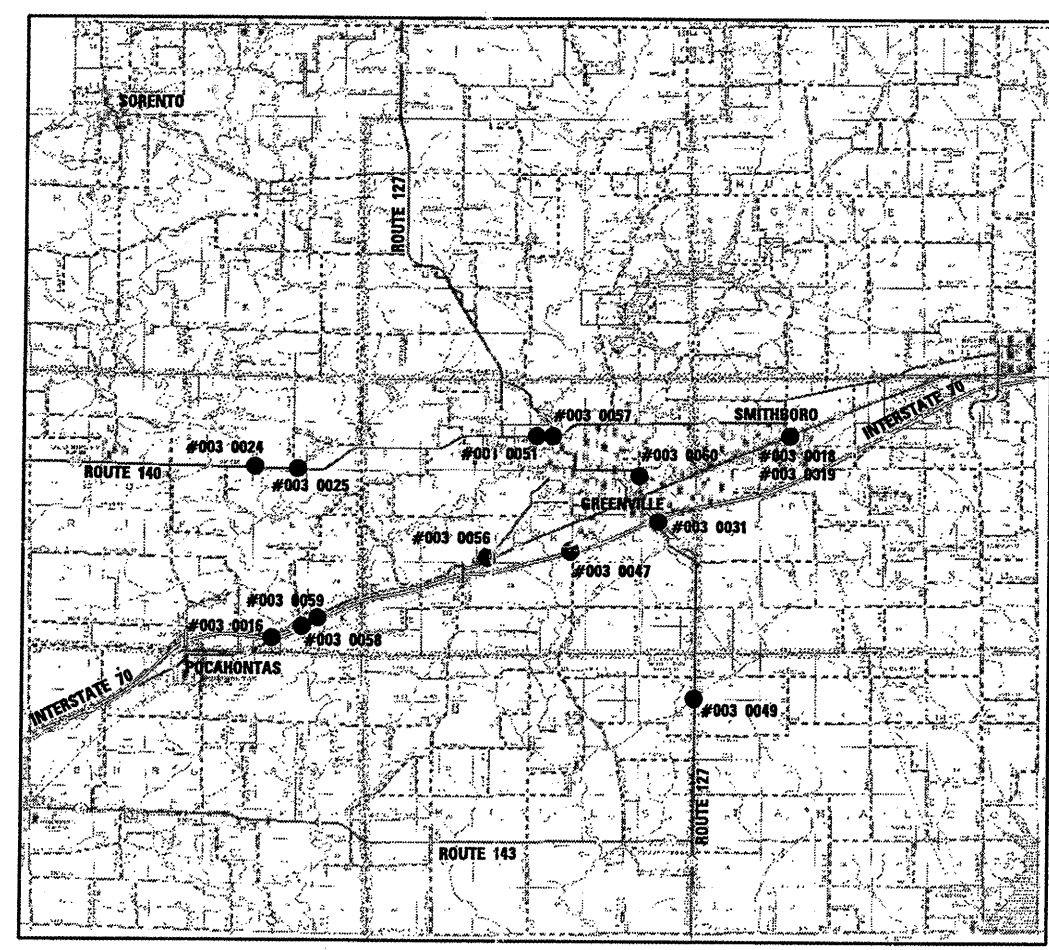
**ROUTE VARIOUS
SECTION DISTRICT 8 BRIDGE DECK 2011-1**

**BOND COUNTY
C-98-128-10**



FULL SIZE PLANS HAVE BEEN PREPARED USING STANDARD ENGINEERING SCALES. REDUCED SIZED PLANS WILL NOT CONFORM TO STANDARD SCALES. IN MAKING MEASUREMENTS ON REDUCED PLANS, THE ABOVE SCALES MAY BE USED.

J.U.L.I.E.
JOINT UTILITY LOCATION INFORMATION FOR EXCAVATION
1-800-892-0123
OR 811



STATE OF ILLINOIS
DEPARTMENT OF TRANSPORTATION
DIVISION OF HIGHWAYS

SUBMITTED December 22 20 10

May C. Jensen
DEPUTY DIRECTOR OF HIGHWAYS, REGION ENGINEER

Feb 4 20 11
Scott E. Stitt, P.E.
Acting ENGINEER OF DESIGN AND ENVIRONMENT

Feb 4 20 11
Christine M. Reed
DIRECTOR OF HIGHWAYS, CHIEF ENGINEER

PROJECT ENGINEER: TIM PADGETT 618-346-3284
PROJECT MANAGER: DON HAYDEN 618-346-3194
CONTRACT NO. 76E41

**LOCATION MAP
NOT TO SCALE**

BA
BENTON & ASSOCIATES, INC.
Consulting Engineers / Land Surveyors
1970 West Lafayette Ave. Jacksonville, IL 62650
Phone: 217-245-4146 Fax: 217-245-4149
IL Design Firm Registration No. 184-000852

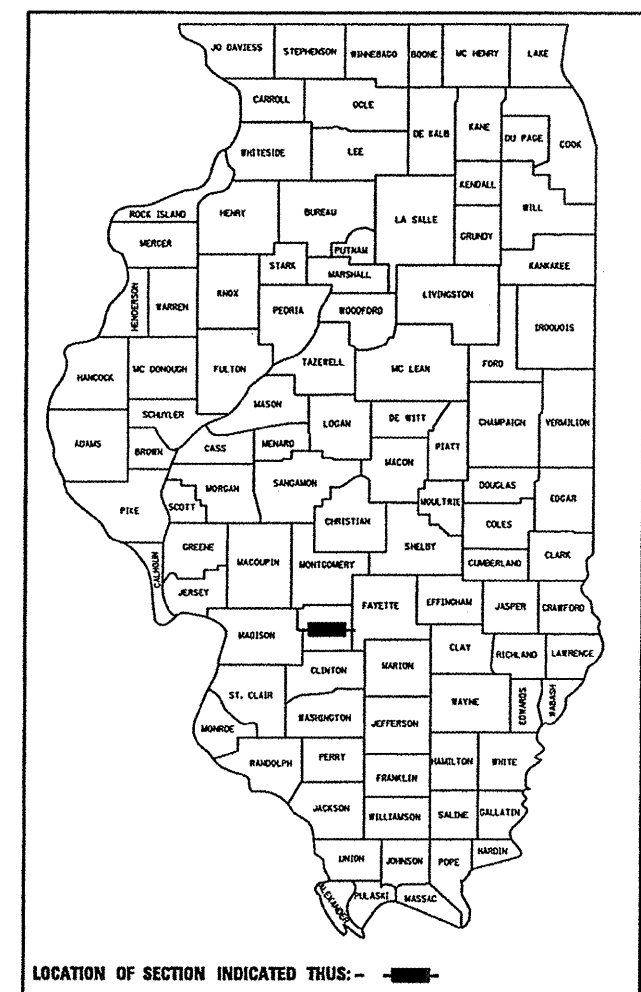
**PRINTED BY THE AUTHORITY
OF THE STATE OF ILLINOIS**

STATE OF ILLINOIS
DEPARTMENT OF TRANSPORTATION
DIVISION OF HIGHWAYS
**PROPOSED
BRIDGE DECK SEALS**

F.A. RTE.	SECTION	COUNTY	TOTAL SHEETS	SHEET NO.
VAR	*	BOND	19	1A
FED. ROAD DIST. NO.		ILLINOIS	CONTRACT NO. 76E41	

* DISTRICT 8 BRIDGE DECK 2011-1

D-98-103-10



LOCATION OF SECTION INDICATED THUS: - ■ -

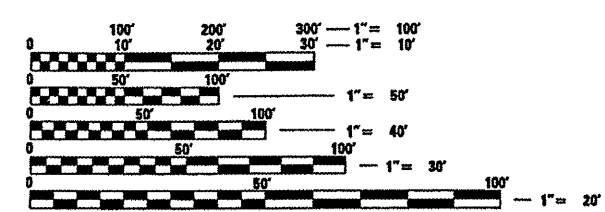
FOR INDEX OF SHEETS, SEE SHEET NO. 2

BRIDGE STRUCTURE NUMBERS

- 003 0016
- 003 0018
- 003 0019
- 003 0024
- 003 0025
- 003 0031
- 003 0047
- 003 0049
- 003 0051
- 003 0056
- 003 0057
- 003 0058
- 003 0059
- 003 0060

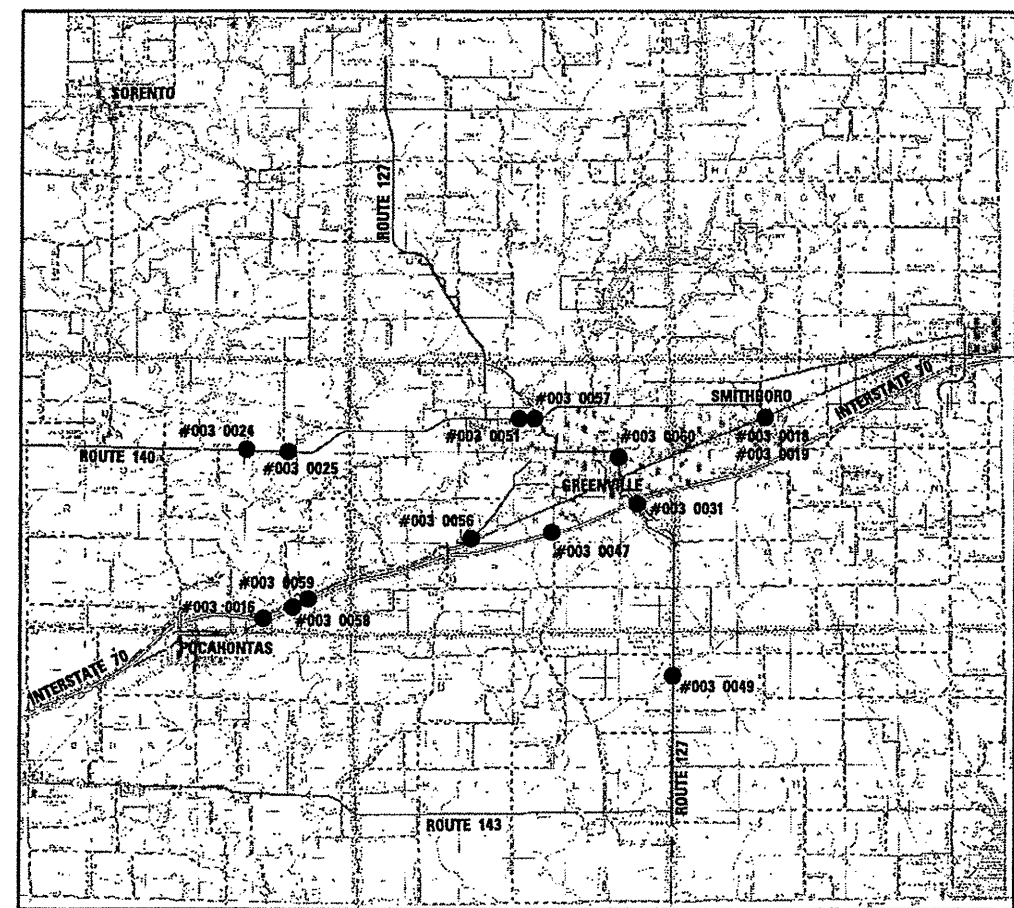
ROUTE VARIOUS
SECTION DISTRICT 8 BRIDGE DECK 2011-1

BOND COUNTY
C-98-128-10



FULL SIZE PLANS HAVE BEEN PREPARED USING STANDARD ENGINEERING SCALES. REDUCED SIZED PLANS WILL NOT CONFORM TO STANDARD SCALES. IN MAKING MEASUREMENTS ON REDUCED PLANS, THE ABOVE SCALES MAY BE USED.

J.U.L.I.E.
JOINT UTILITY LOCATION INFORMATION FOR EXCAVATION
1-800-892-0123
OR 811



Reginald H. Benton
1/28/2011 EXP 11/30/12

STATE OF ILLINOIS
DEPARTMENT OF TRANSPORTATION
DIVISION OF HIGHWAYS

SUBMITTED _____ 20 _____

DEPUTY DIRECTOR OF HIGHWAYS, REGION ENGINEER

ENGINEER OF DESIGN AND ENVIRONMENT

DIRECTOR OF HIGHWAYS, CHIEF ENGINEER

PROJECT ENGINEER: TIM PADGETT 618-346-3284
PROJECT MANAGER: DON HAYDEN 618-346-3194

CONTRACT NO. 76E41

LOCATION MAP
NOT TO SCALE

BA
BENTON & ASSOCIATES, INC.
Consulting Engineers / Land Surveyors
1970 West Lafayette Ave. Jacksonville, IL 62650
Phone: 217-245-4146 Fax: 217-245-4149
IL Design Firm Registration No. 184-000852

PRINTED BY THE AUTHORITY
OF THE STATE OF ILLINOIS

1A

STANDARDS

000001-06 STANDARD SYMBOLS, ABBREVIATIONS & PATTERNS
 701201-04 LANE CLOSURE, 2L, 2W, DAY ONLY, FOR SPEEDS GREATER OR EQUAL TO 45 MPH
 701901-01 TRAFFIC CONTROL DEVICES

GENERAL NOTES

1. PLAN DIMENSIONS AND DETAILS RELATIVE TO EXISTING STRUCTURE HAVE BEEN TAKEN FROM EXISTING PLANS AND ARE SUBJECT TO NOMINAL CONSTRUCTION VARIATION. IT SHALL BE THE CONTRACTOR'S RESPONSIBILITY TO VERIFY SUCH DIMENSIONS AND DETAILS IN THE FIELD AND MAKE NECESSARY APPROVED ADJUSTMENTS PRIOR TO CONSTRUCTION OR ORDERING OF MATERIAL. SUCH VARIATIONS SHALL NOT BE CAUSE FOR ADDITIONAL COMPENSATION FOR A CHANGE IN THE SCOPE OF THE WORK, HOWEVER, THE CONTRACTOR WILL BE PAID FOR THE QUANTITY ACTUALLY FURNISHED AT THE UNIT PRICE BID FOR THE WORK.
2. NO OVERNIGHT LANE CLOSURES SHALL BE ALLOWED.
3. FLAG MAN SHALL BE PRESENT DURING ALL CLOSURE HOURS INCLUDING LUNCH HOUR AND NO ADDITIONAL COMPENSATION SHALL BE ALLOWED.
4. UTILITIES INTERFERENCES ARE NOT ANTICIPATED ON THIS CONTRACT. SHOULD THIS PROVE TO BE OTHERWISE DURING ANY OF THE TIME OF THE OCCURRENCE, NO ADDITIONAL COST SHALL BE ADDED TO THE CONTRACT RESULTING FROM THE OCCURRENCE. THE JOINT UTILITY LOCATING INFORMATION FOR EXCAVATORS (J.U.L.I.E.) SYSTEM NUMBER IS (800) 892-0123.
5. EXISTING PAVEMENT MARKINGS AND REFLECTIVE PAVEMENT MARKERS SHALL BE TEMPORARILY COVERED PRIOR TO APPLICATION OF THE DECK SURFACE TREATMENT, TO PREVENT MATERIAL FROM BEING APPLIED TO MARKINGS. THE TEMPORARY COVERING SHALL BE REMOVED AFTER APPLICATION OF THE DECK SURFACE TREATMENT AND PRIOR TO OPENING TRAFFIC. COST IS INCLUDED WITH THE DECK SURFACE TREATMENT SPECIFIED

INDEX OF SHEETS

1	COVER SHEET
1A	COVER SHEET WITH STRUCTURAL SEAL
2	INDEX OF SHEETS, STANDARDS, & GENERAL NOTES
3	SUMMARY OF QUANTITIES
4	SCHEDULE OF QUANTITIES
5	OVERALL COUNTY BRIDGE LOCATION MAP
6 - 19	PLAN VIEWS AND TYPICAL SECTIONS

SUMMARY OF QUANTITIES				100% STATE
CODE NO.	ITEM	UNITS	TOTAL QUANTITIES	CONSTRUCTION TYPE CODE
				0014
58700300	CONCRETE SEALER	SQ FT	149,437	149,437
67100100	MOBILIZATION	L SUM	1	1
70100450	TRAFFIC CONTROL AND PROTECTION STANDARD 701201	L SUM	1	1

FILE NAME = P:\10E2166-1\Design\Plans\03 - summary of quantities.dgn	USER NAME = #USER#	DESIGNED - JAH	REVISED -
		DRAWN - JAH	REVISED -
PLOT SCALE = 1:5000' / IN.		CHECKED - WJS	REVISED -
PLOT DATE = 12/22/2010		DATE - 11-2-10	REVISED -

**STATE OF ILLINOIS
DEPARTMENT OF TRANSPORTATION**

SUMMARY OF QUANTITIES				
SCALE:	SHEET NO.	OF SHEETS	STA.	TO STA.

F.A.P. RTE.	SECTION	COUNTY	TOTAL SHEETS	SHEET NO.
VAR	*	BOND	19	3
CONTRACT NO. 76E41				
FED. ROAD DIST. NO. ILLINOIS FED. AID PROJECT				
• DISTRICT 8 BRIDGE DECK 2011-1				

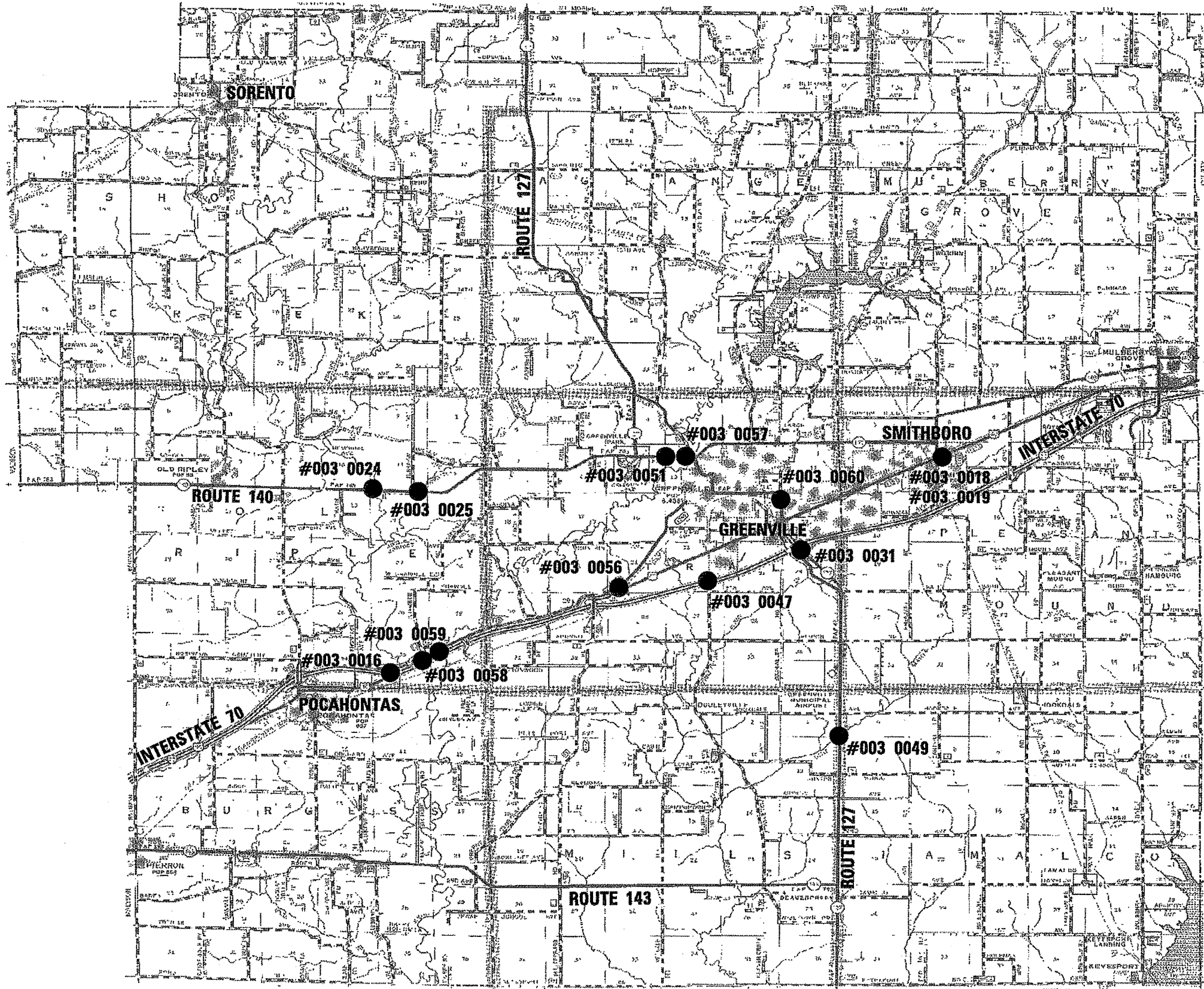
BRIDGE DECK TREATMENT

LOCATION BRIDGE NO.	CONCRETE SEALER
	SQ FT
003-0016	11,394
003-0018	11,021
003-0019	6,116
003-0024	12,105
003-0025	4,444
003-0031	18,801
003-0047	10,738
003-0049	6,771
003-0051	10,886
003-0056	13,242
003-0057	9,030
003-0058	17,476
003-0059	9,840
003-0060	7,573
TOTAL	149,437

FILE NAME =	USER NAME = #USER#	DESIGNED - JAH	REVISED -	STATE OF ILLINOIS DEPARTMENT OF TRANSPORTATION	SCHEDULE OF QUANTITIES				F.A.P. RTE.	SECTION	COUNTY	TOTAL SHEETS	SHEET NO.
P:\10E2166-1\Design\Plans\04 - schedule	of quantities per bridge.dgn	DRAWN - JAH	REVISED -		SCALE:	SHEET NO.	OF	SHEETS	STA.	TO STA.	BOND	19	4
	PLOT SCALE = 1/8" = 1' IN.	CHECKED - WJS	REVISED -								CONTRACT NO. 76E41		
	PLOT DATE = 12/7/2010	DATE - 11-2-10	REVISED -								FED. ROAD DIST. NO.	ILLINOIS FED. AID PROJECT	



NOT TO SCALE



FILE NAME =
P:\18E2166-1\Design\Plans\05 - overall co

USER NAME = *USER*
county bridge location map.dgn
PLOT SCALE = 0.7500 "/ IN.
PLOT DATE = 12/7/2010

DESIGNED - JAH
DRAWN - JAH
CHECKED - WJS
DATE - 11-2-10

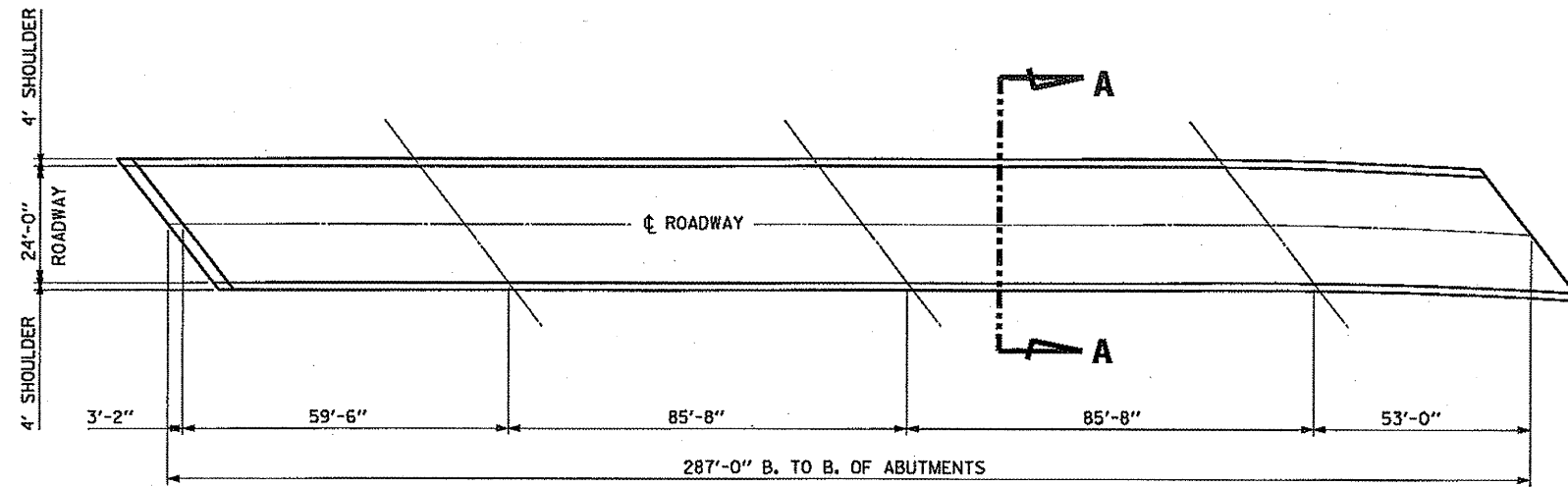
REVISED -
REVISED -
REVISED -
REVISED -

STATE OF ILLINOIS
DEPARTMENT OF TRANSPORTATION

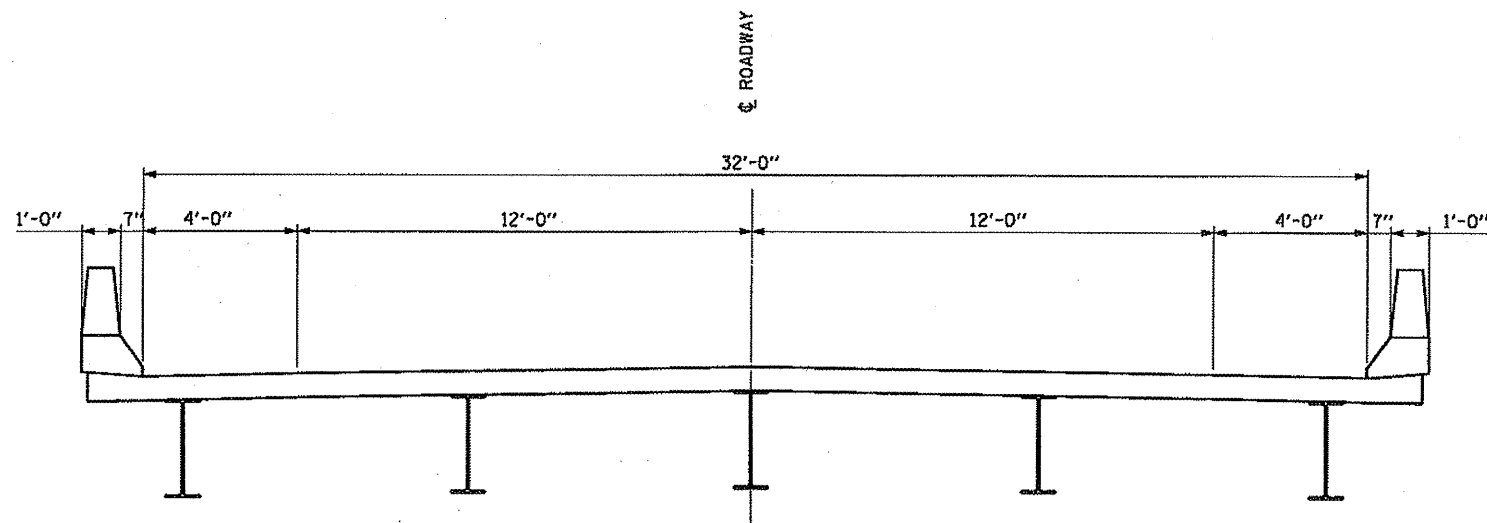
OVERALL BRIDGE LOCATION MAP

SCALE: SHEET NO. OF SHEETS STA. TO STA.

F.A.P. RTE.	SECTION	COUNTY	TOTAL SHEETS	SHEET NO.
VAR	*	BOND	19	5
CONTRACT NO. 76E41				
FED. ROAD DIST. NO. ILLINOIS FED. AID PROJECT				
* DISTRICT 8 BRIDGE DECK 2011-1				



PLAN VIEW

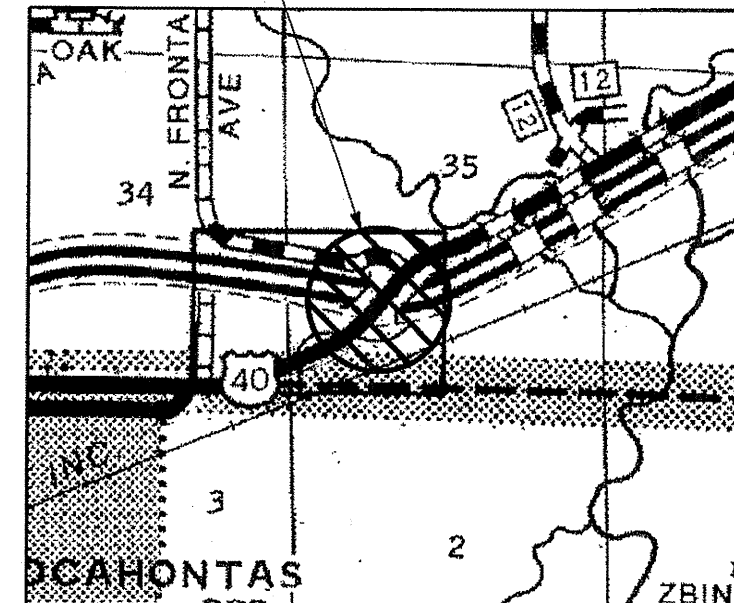


TYPICAL SECTION THRU BRIDGE [A-A]

TOTAL BILL OF MATERIAL

ITEM	UNIT	TOTAL
CONCRETE SEALER	SQ FT	11,394

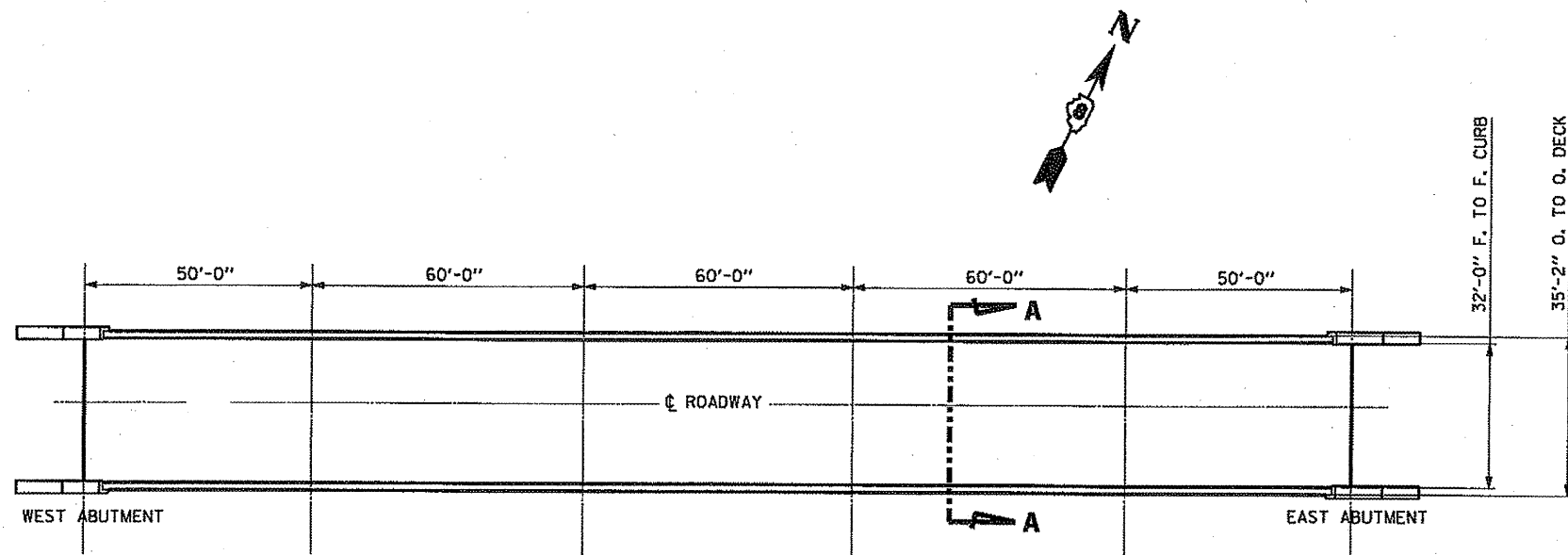
BRIDGE #003 0016
SECTION (3-2)-1HBR



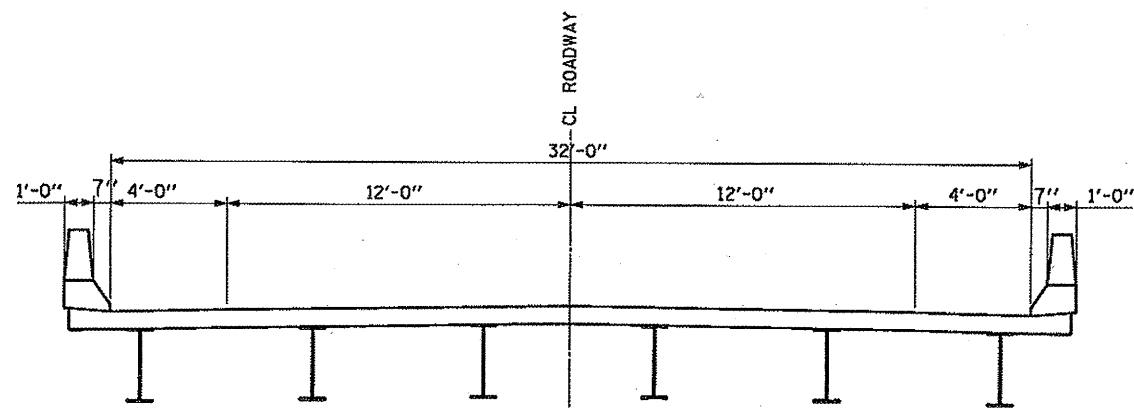
LOCATION MAP

FILE NAME = P:\18E2166-1\Design\Plans\B5 - SN003-0016.dgn	USER NAME = #USER*	DESIGNED - JAH	REVISED -	STATE OF ILLINOIS DEPARTMENT OF TRANSPORTATION	BRIDGE #003-0016 CARRYING US RT. 40 OVER I-70 PLAN & SECTION VIEWS	F.A.P. RTE.	SECTION	COUNTY	TOTAL SHEETS	SHEET NO.	
PLOT SCALE = 40,0000' / IN.	CHECKED - WJS	DRAWN - JAH	REVISED -			VAR.		BOND	19	6	
PLOT DATE = 12/7/2010	DATE - 11-2-10		REVISED -			CONTRACT NO. 76E41					
						FED. ROAD DIST. NO.	ILLINOIS FED. AID PROJECT				

SCALE: SHEET NO. OF SHEETS STA. TO STA. DISTRICT 8 BRIDGE DECK 2011-1



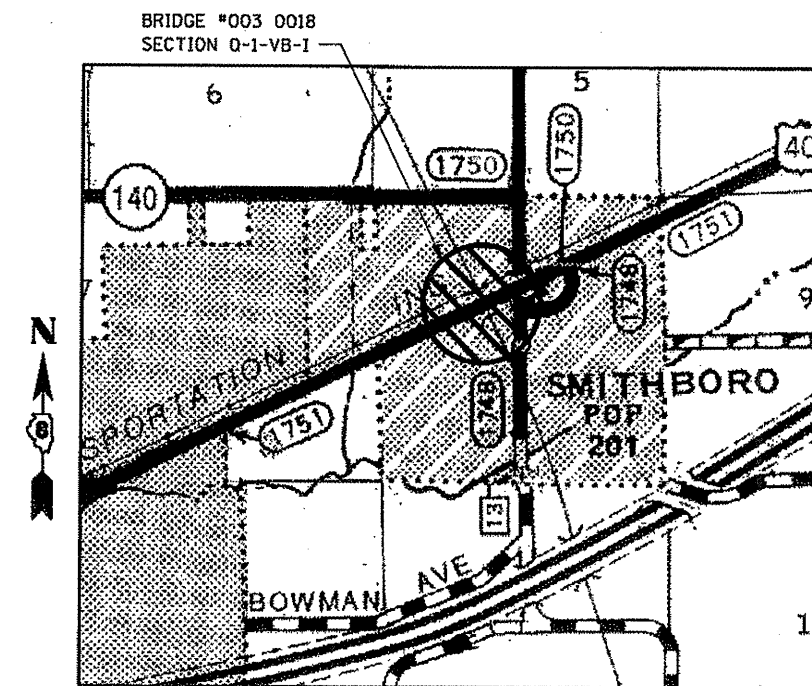
PLAN VIEW



TYPICAL SECTION THRU BRIDGE [A-A]

TOTAL BILL OF MATERIAL

ITEM	UNIT	TOTAL
CONCRETE SEALER	SQ FT	11,021



LOCATION MAP

FILE NAME =	USER NAME = *USER*	DESIGNED - JAH	REVISED -
P:\102165-1\Design\Plans\07 - SN003-0018.dgn		DRAWN - JAH	REVISED -
PLOT SCALE = 48,0000' / IN.		CHECKED - WJS	REVISED -
PLOT DATE = 12/10/2010		DATE - 11-2-10	REVISED -

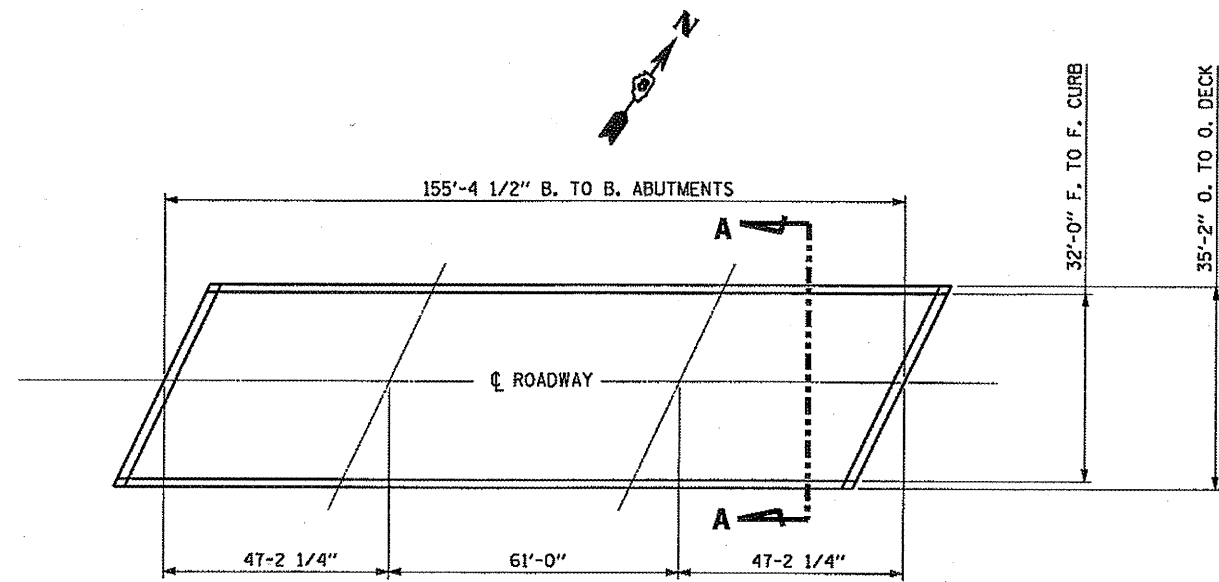
STATE OF ILLINOIS
DEPARTMENT OF TRANSPORTATION

BRIDGE #003-0018 F.A. ROUTE 12 OVER C B & R RAILROAD
PLAN & SECTION VIEWS

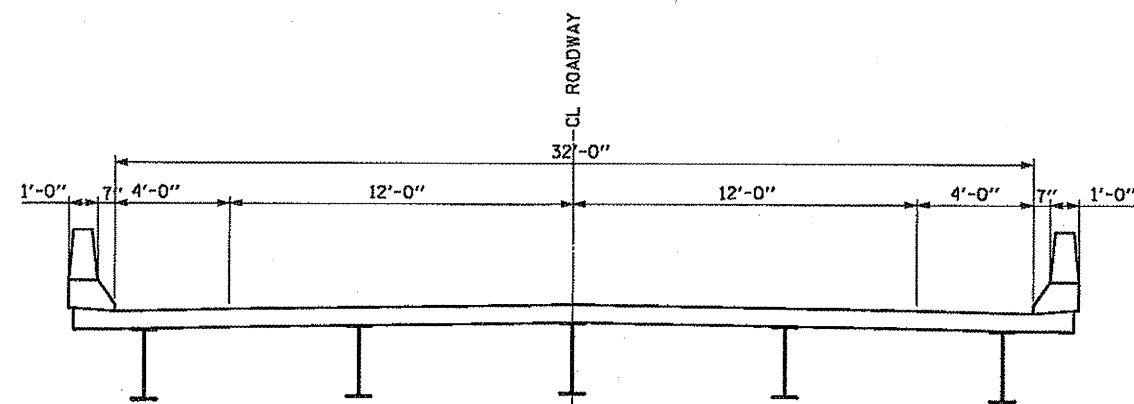
SCALE: SHEET NO. OF SHEETS STA. TO STA.

F.A.P. RTE.	SECTION	COUNTY	TOTAL SHEETS	SHEET NO.
VAR	*	BOND	19	7
		CONTRACT NO. 76E41		

FED. ROAD DIST. NO. ILLINOIS FED. AID PROJECT
DISTRICT 8 BRIDGE DECK 2011-1



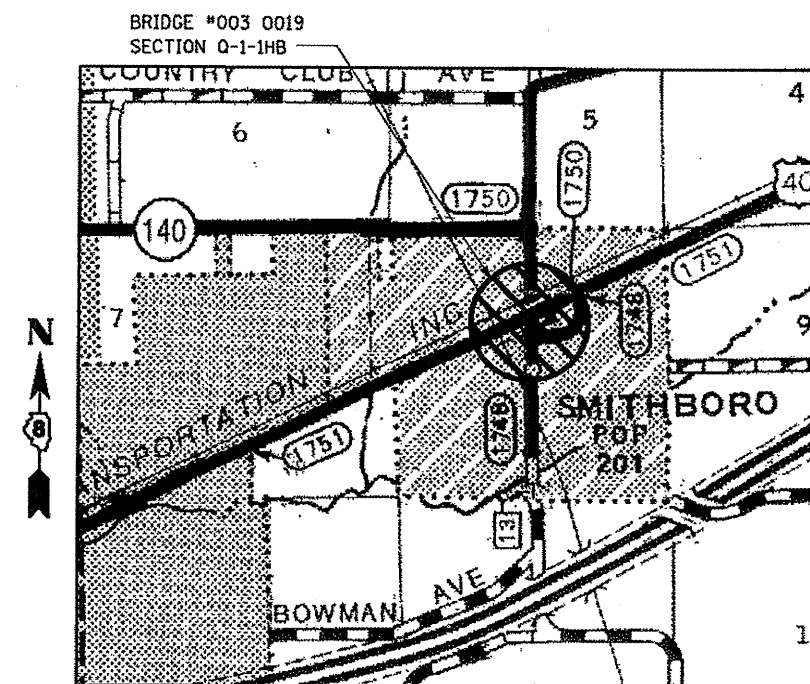
PLAN VIEW



TYPICAL SECTION THRU BRIDGE [A-A]

TOTAL BILL OF MATERIAL

ITEM	UNIT	TOTAL
CONCRETE SEALER	SQ FT	6,116



LOCATION MAP

FILE NAME =	USER NAME = *USER*	DESIGNED - JAH	REVISED -
P:\10E2165-1\Design\Plans\08 - SN003-0019.dgn		DRAWN - JAH	REVISED -
PLOT SCALE = 40.0000' / IN.		CHECKED - WJS	REVISED -
PLOT DATE = 12/10/2010		DATE - 11-2-10	REVISED -

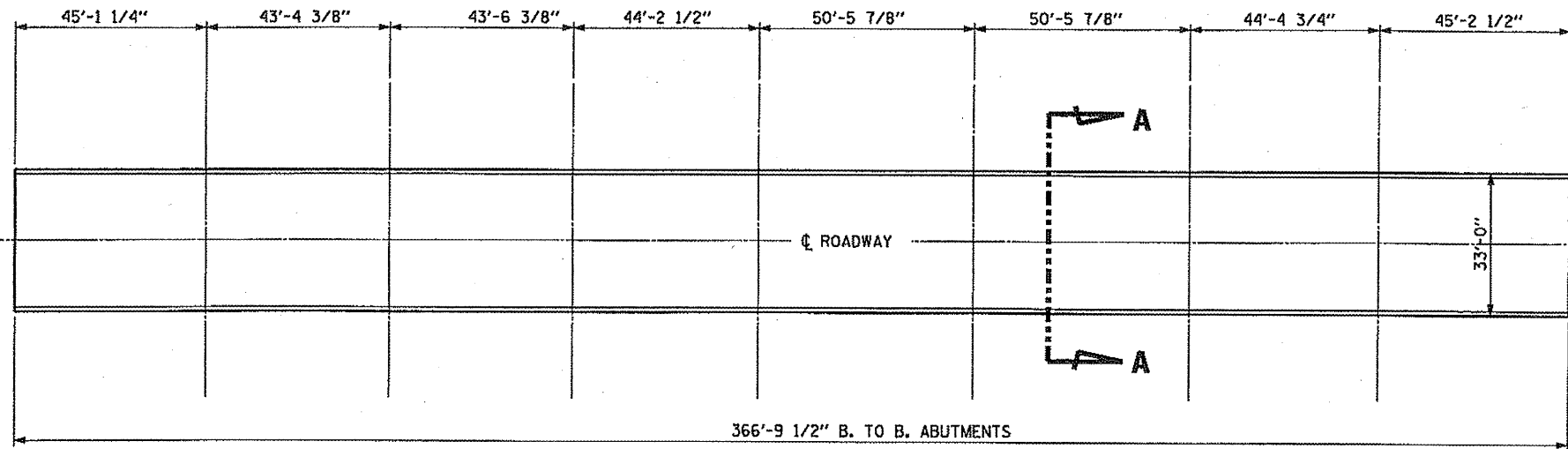
STATE OF ILLINOIS
DEPARTMENT OF TRANSPORTATION

BRIDGE #003-0019 F.A. ROUTE 12 OVER S.B.I. ROUTE 128A
PLAN & SECTION VIEWS

SCALE: SHEET NO. OF SHEETS STA. TO STA.

F.A.P. RTE.	SECTION	COUNTY	TOTAL SHEETS	SHEET NO.
VAR	*	BOND	19	8
CONTRACT NO. 76E41				

FED. ROAD DIST. NO. ILLINOIS FED. AID PROJECT
DISTRICT 8 BRIDGE DECK 2011-1

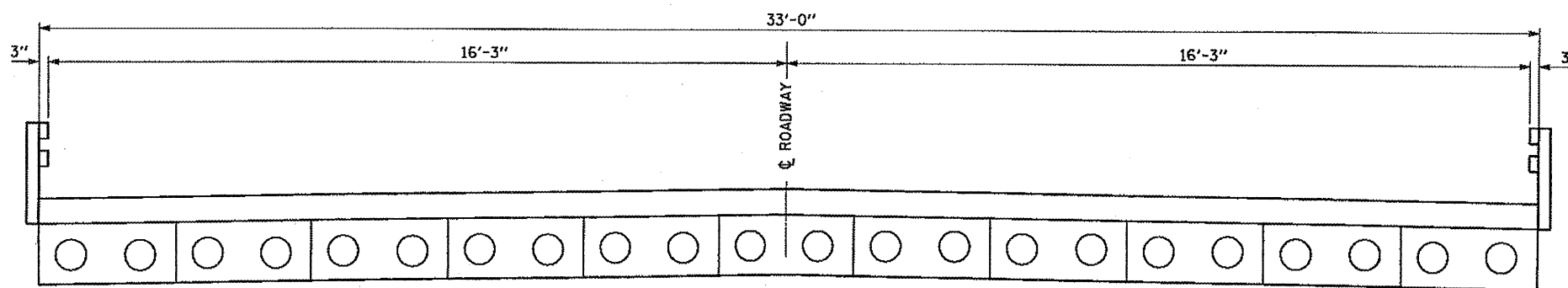


PLAN VIEW



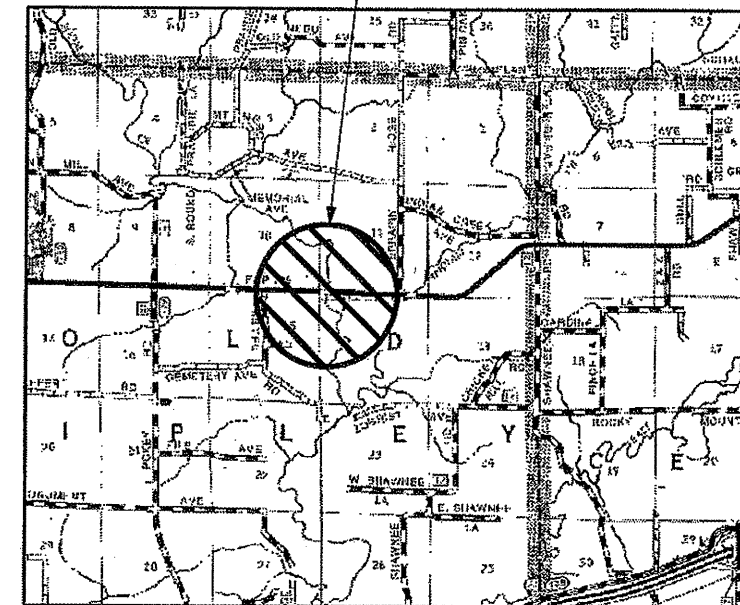
TOTAL BILL OF MATERIAL

ITEM	UNIT	TOTAL
CONCRETE SEALER	SQ FT	12,105



TYPICAL SECTION THRU BRIDGE [A-A]

**BRIDGE #003 0024
SECTIONS 138BR & 138BR-1**



LOCATION MAP

FILE NAME =	USER NAME = #USER#	DESIGNED - JAH	REVISED -
P:\182166-1\Design\Plans\09 - SH003-0024.dgn		DRAWN - JAH	REVISED -
	PLOT SCALE = 40.0000' / IN.	CHECKED - WJS	REVISED -
	PLOT DATE = 12/10/2010	DATE - 11-2-10	REVISED -

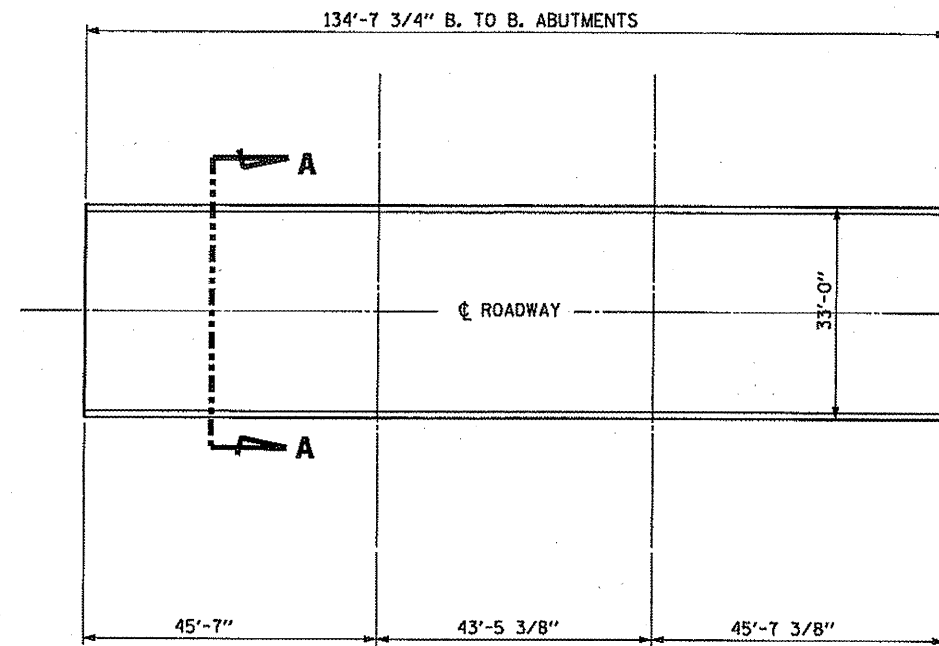
**STATE OF ILLINOIS
DEPARTMENT OF TRANSPORTATION**

**BRIDGE #003-0024 F.A. ROUTE 67 (IL RTE. 140) OVER SHOAL CREEK
PLAN & SECTION VIEWS**

SCALE: SHEET NO. OF SHEETS STA. TO STA.

F.A.P. RTE.	SECTION	COUNTY	TOTAL SHEETS	SHEET NO.
VAR	*	BOND	19	9
CONTRACT NO. 76E41				

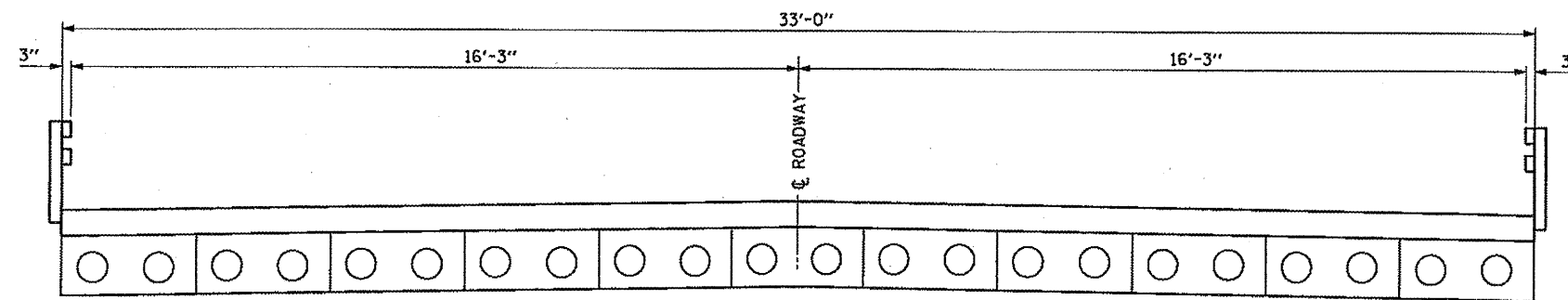
FED. ROAD DIST. NO. ILLINOIS FED. AID PROJECT
DISTRICT 8 BRIDGE DECK 2011-1



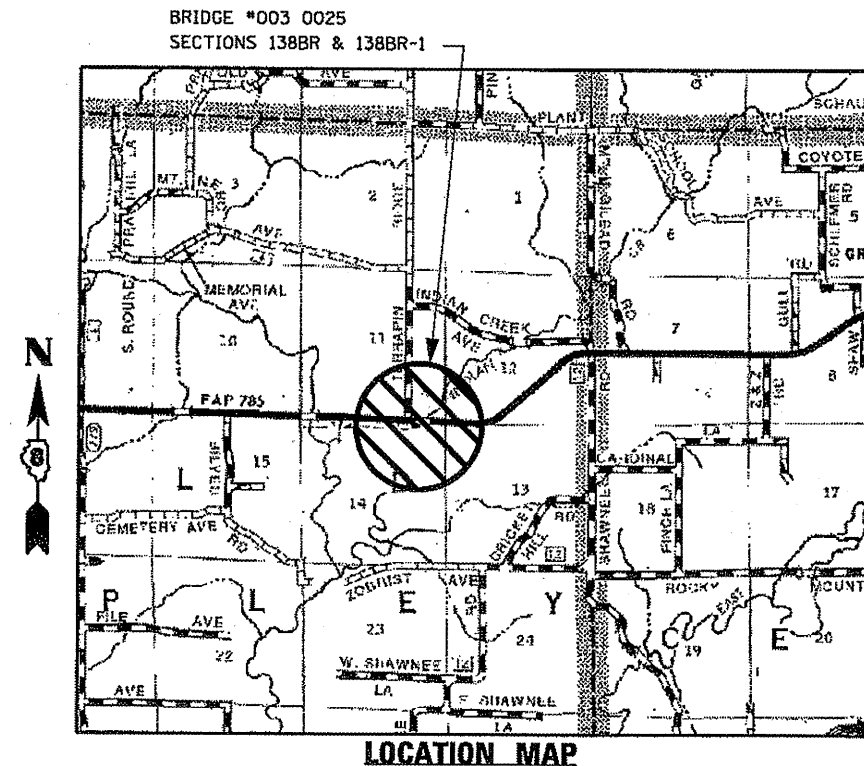
PLAN VIEW

TOTAL BILL OF MATERIAL

ITEM	UNIT	TOTAL
CONCRETE SEALER	SQ FT	4,444



TYPICAL SECTION THRU BRIDGE [A-A]



FILE NAME =	USER NAME = #USER#	DESIGNED - JAH	REVISED -
PA10E2166-1\Design\Plans\10 - SN003-0025.dgn		DRAWN - JAH	REVISED -
PLOT SCALE = 38.8888' / IN.		CHECKED - WJS	REVISED -
PLOT DATE = 12/1/2010		DATE - 11-2-10	REVISED -

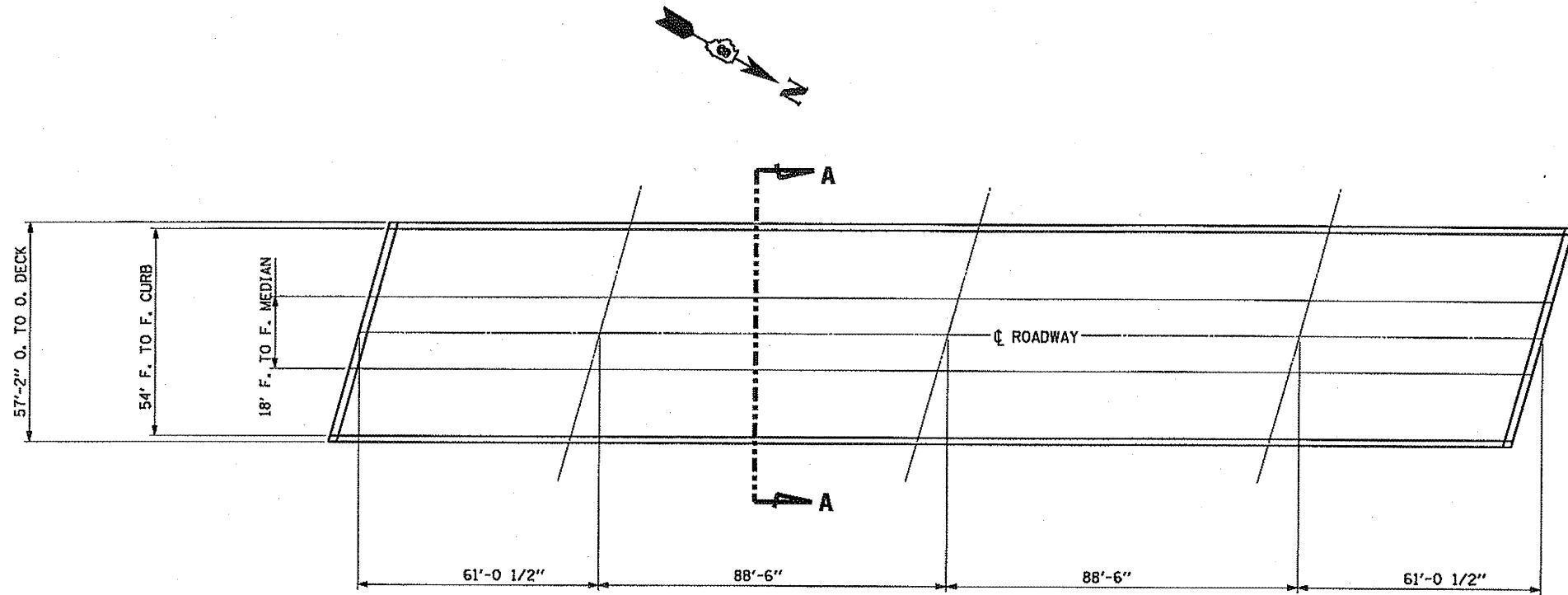
STATE OF ILLINOIS
DEPARTMENT OF TRANSPORTATION

BRIDGE #003-0025 F.A. ROUTE 67 (IL RTE. 140) OVER INDIAN CREEK
PLAN & SECTION VIEWS

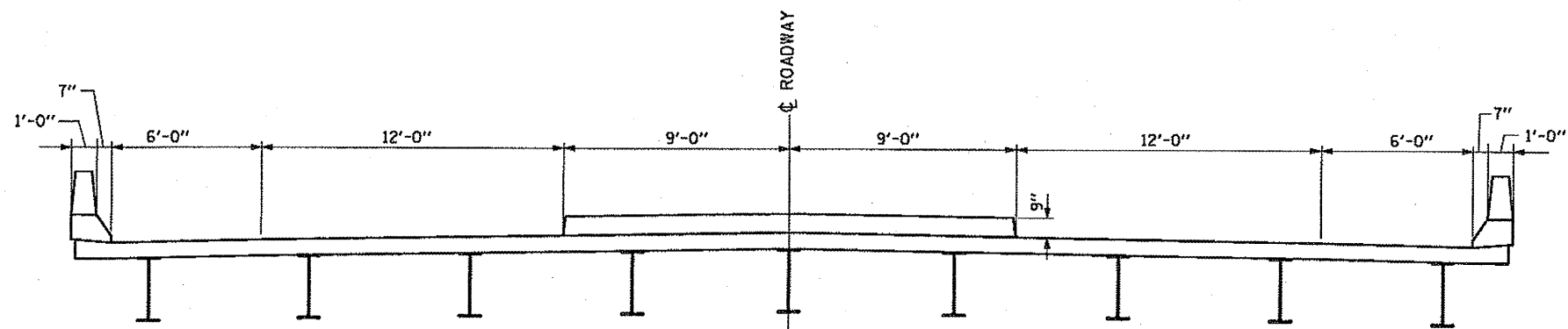
SCALE: SHEET NO. OF SHEETS STA. TO STA.

F.A.P. RTE.	SECTION	COUNTY	TOTAL SHEETS	SHEET NO.
VAR		BOND	19	10
CONTRACT NO. 76E41				

FED. ROAD DIST. NO. ILLINOIS FED. AID PROJECT
DISTRICT 8 BRIDGE DECK 2011-



PLAN VIEW

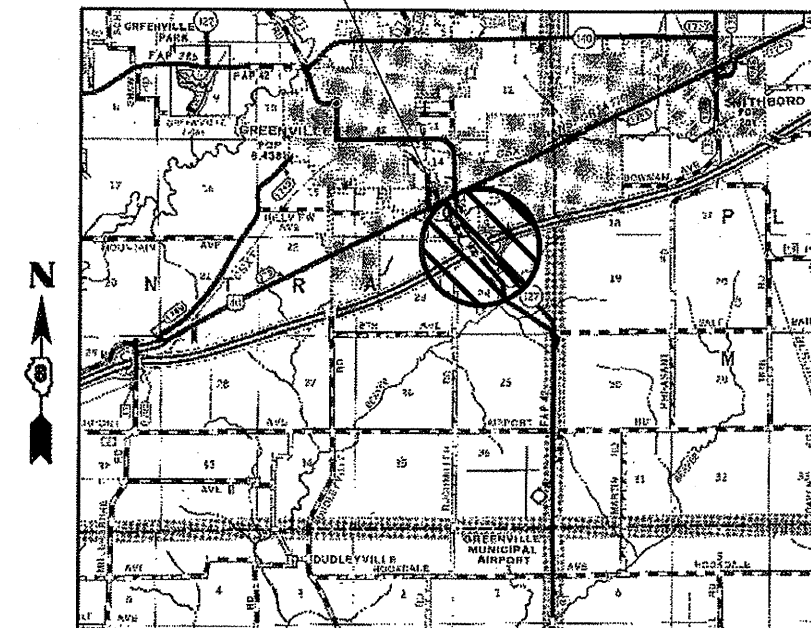


TYPICAL SECTION THRU BRIDGE [A-A]

TOTAL BILL OF MATERIAL

ITEM	UNIT	TOTAL
CONCRETE SEALER	SQ FT	18,801

BRIDGE #003 0031
SECTION 3-4HBR-1



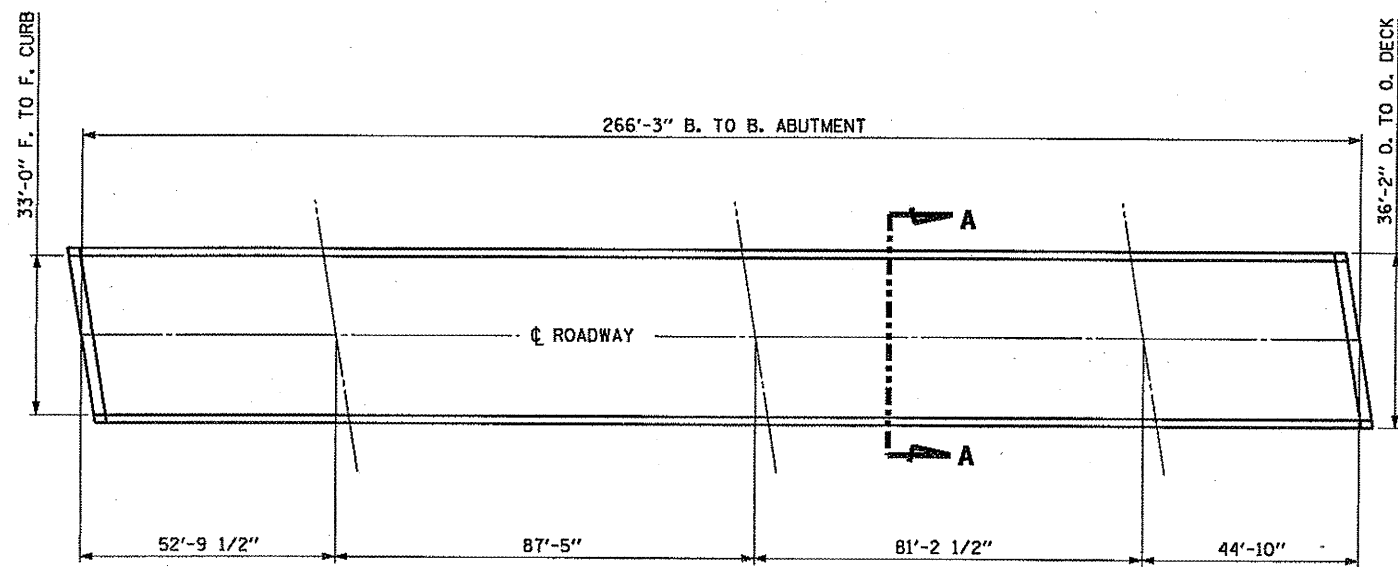
LOCATION MAP

FILE NAME =	USER NAME = #USER#	DESIGNED - JAH	REVISED -
PA\02166-1\Design\Plans\11 - 5H003-0031.dgn		DRAWN - JAH	REVISED -
	PLOT SCALE = 40.0000' / 1"	CHECKED - WJS	REVISED -
	PLOT DATE = 12/10/2010	DATE - 11-2-10	REVISED -

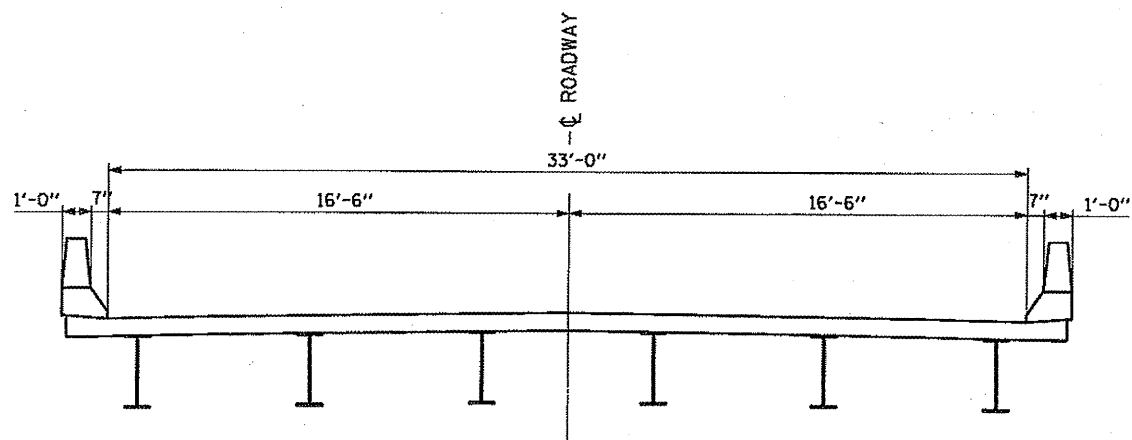
**STATE OF ILLINOIS
DEPARTMENT OF TRANSPORTATION**

BRIDGE #003-0031 CARRYING IL 127 OVER I-70 PLAN & SECTION VIEWS			
SCALE:	SHEET NO.	OF SHEETS	STA. TO STA.

F.A.P.	SECTION	COUNTY	TOTAL SHEETS	SHEET NO.
VAR		BOND	19	11
CONTRACT NO. T6E41				
FED. ROAD DIST. NO. ILLINOIS FED. AID PROJECT DISTRICT 8 BRIDGE DECK 2011-1				



PLAN VIEW

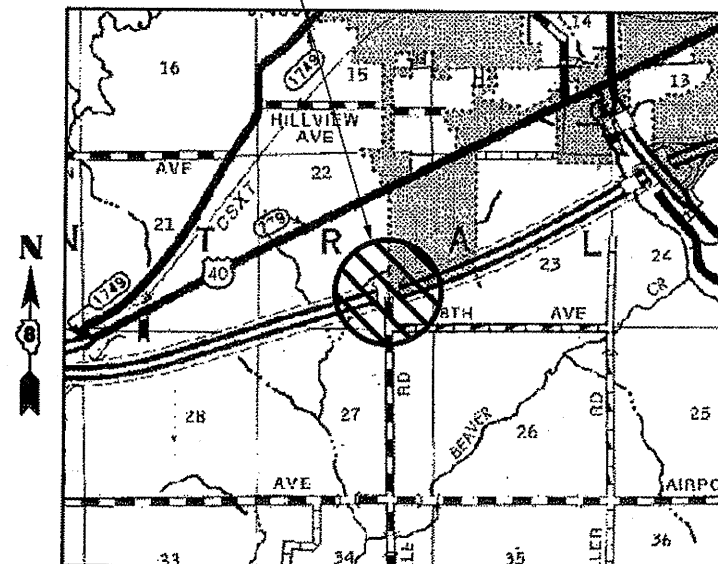


TYPICAL SECTION THRU BRIDGE [A-A]

TOTAL BILL OF MATERIAL

ITEM	UNIT	TOTAL
CONCRETE SEALER	SQ FT	10,738

BRIDGE #003 0047
SECTION 3-3HBR



LOCATION MAP

FILE NAME =	USER NAME = #USER#	DESIGNED - JAH	REVISED -
P:\1062166-1\Design\Plans\12 - SN003-0047.dgn		DRAWN - JAH	REVISED -
PLOT SCALE = 48.0000' / IN.		CHECKED - WJS	REVISED -
PLOT DATE = 12/7/2010		DATE - 11-2-10	REVISED -

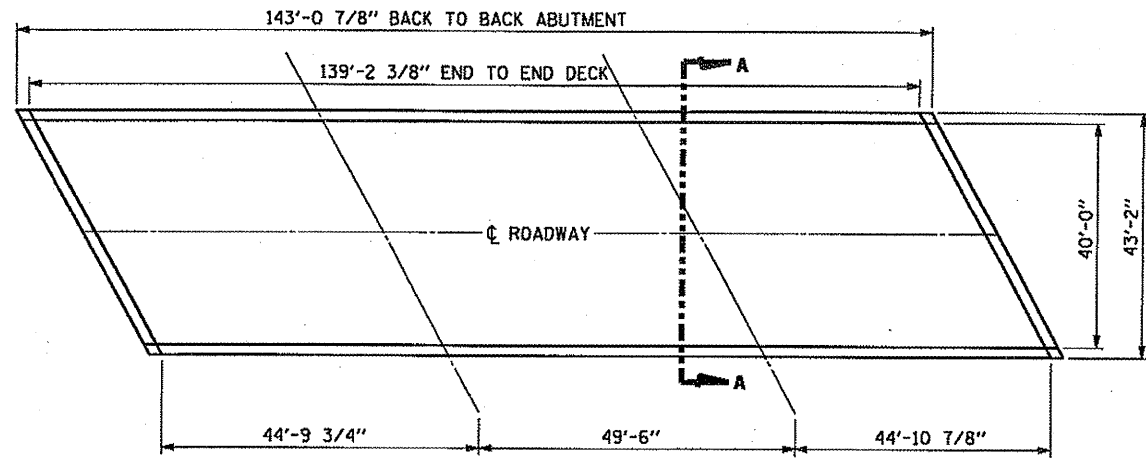
**STATE OF ILLINOIS
DEPARTMENT OF TRANSPORTATION**

**BRIDGE #003-0047 CARRYING CTY HWY 17 OVER I-70
PLAN & SECTION VIEWS**

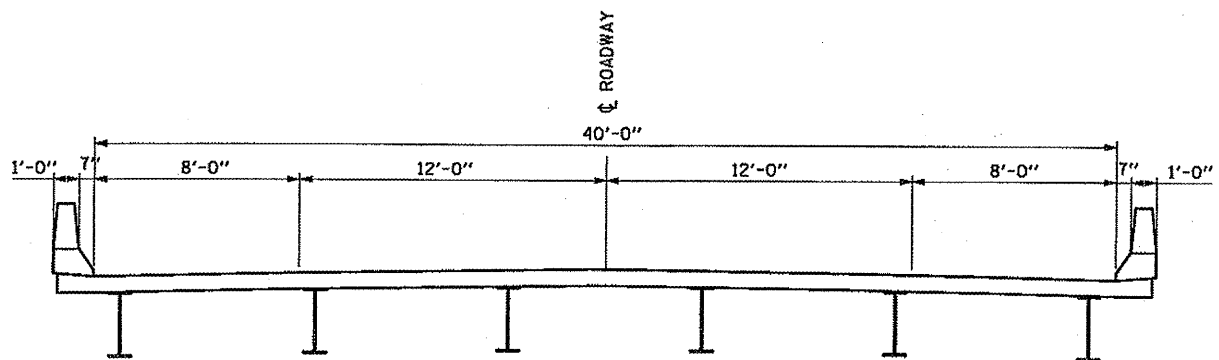
SCALE: SHEET NO. OF SHEETS STA. TO STA.

F.A.P. RTE.	SECTION	COUNTY	TOTAL SHEETS	SHEET NO.
VAR	*	BOND	19	12
CONTRACT NO. 76E41				

FED. ROAD DIST. NO. ILLINOIS FED. AID PROJECT
* DISTRICT 8 BRIDGE DECK 2011-1



PLAN VIEW

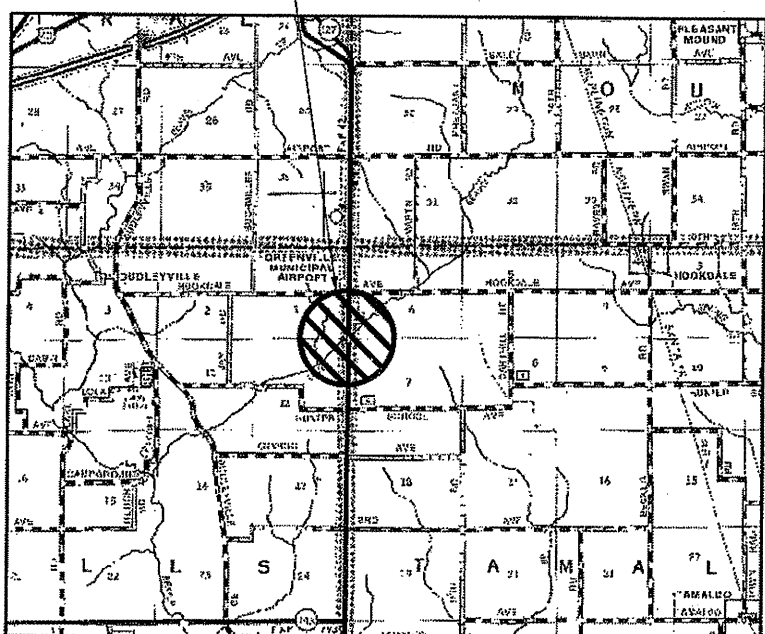


TYPICAL SECTION THRU BRIDGE [A-A]

TOTAL BILL OF MATERIAL

ITEM	UNIT	TOTAL
CONCRETE SEALER	SQ FT	6,771

BRIDGE #003 0049
SECTION 111BR



LOCATION MAP

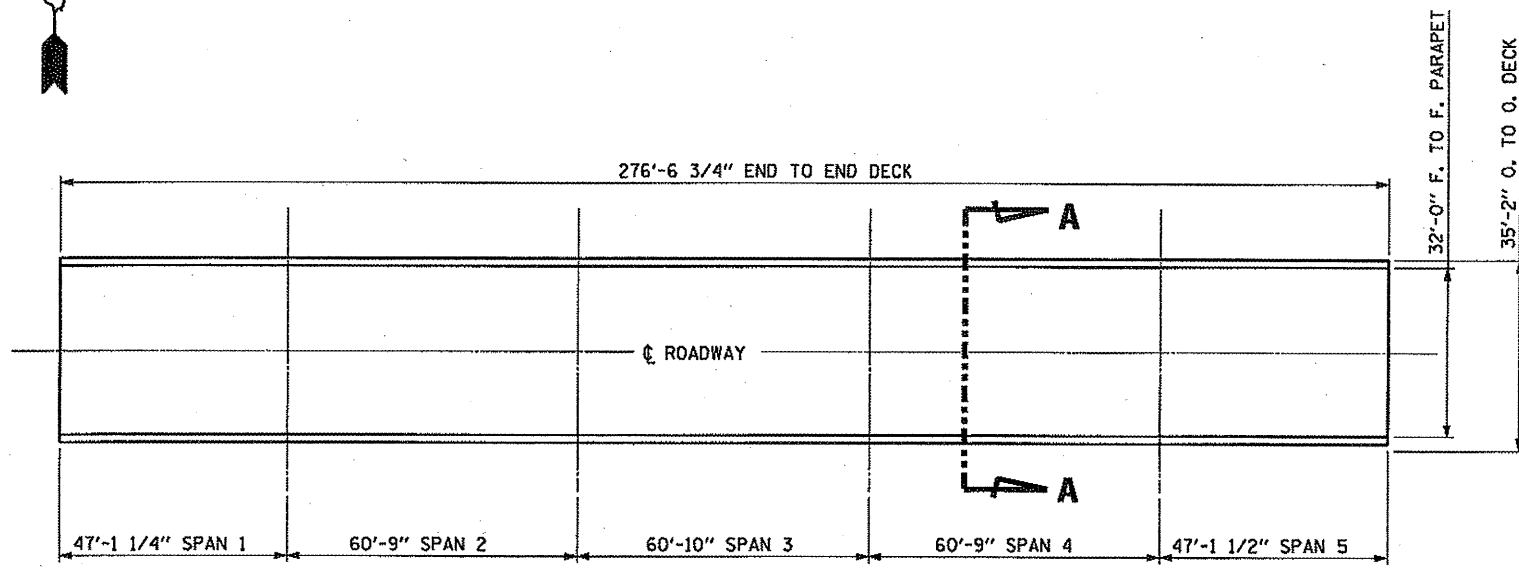
FILE NAME =	USER NAME = #USER#	DESIGNED - JAH	REVISED -
PA10E2165-1\Design\Plans\13 - SN003-0049.dgn		DRAWN - JAH	REVISED -
PLOT SCALE = 30.0000' / IN.		CHECKED - WJS	REVISED -
PLOT DATE = 12/7/2018		DATE - 11-2-10	REVISED -

**STATE OF ILLINOIS
DEPARTMENT OF TRANSPORTATION**

**BRIDGE #003-0049 F.A. ROUTE 42 OVER LITTLE BEAVER CREEK
PLAN & SECTION VIEWS**

SCALE: SHEET NO. OF SHEETS STA. TO STA.

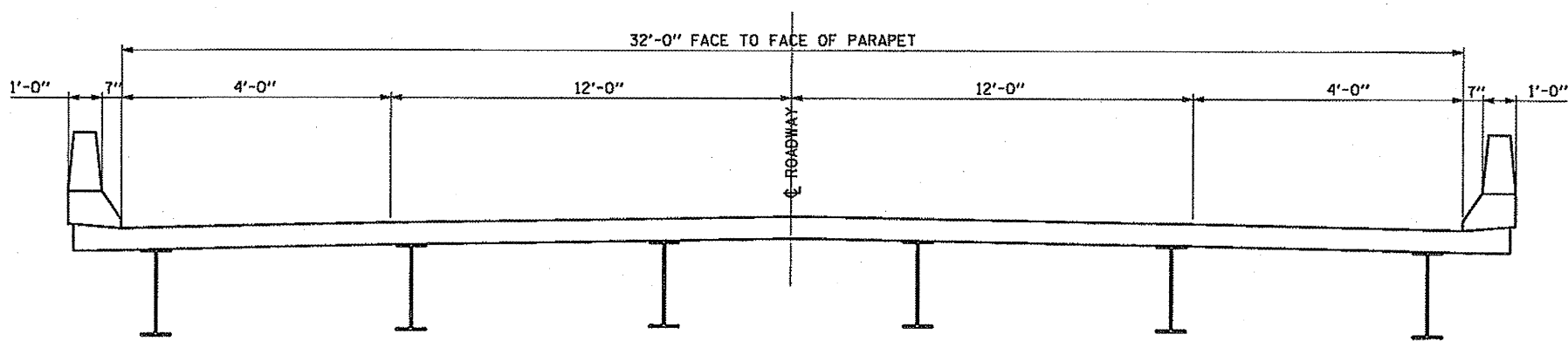
F.A.P. RTE.	SECTION	COUNTY	TOTAL SHEETS	SHEET NO.
VAR	.	BOND	19	13
		CONTRACT NO. 76E41		
FED. ROAD DIST. NO.	ILLINOIS FED. AID PROJECT	DISTRICT 8 BRIDGE DECK 2011-1		



PLAN VIEW

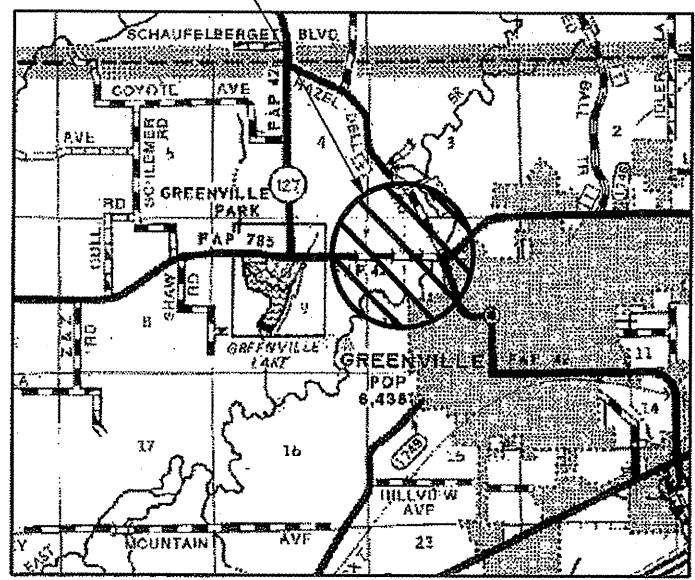
TOTAL BILL OF MATERIAL

ITEM	UNIT	TOTAL
CONCRETE SEALER	SQ FT	10,886



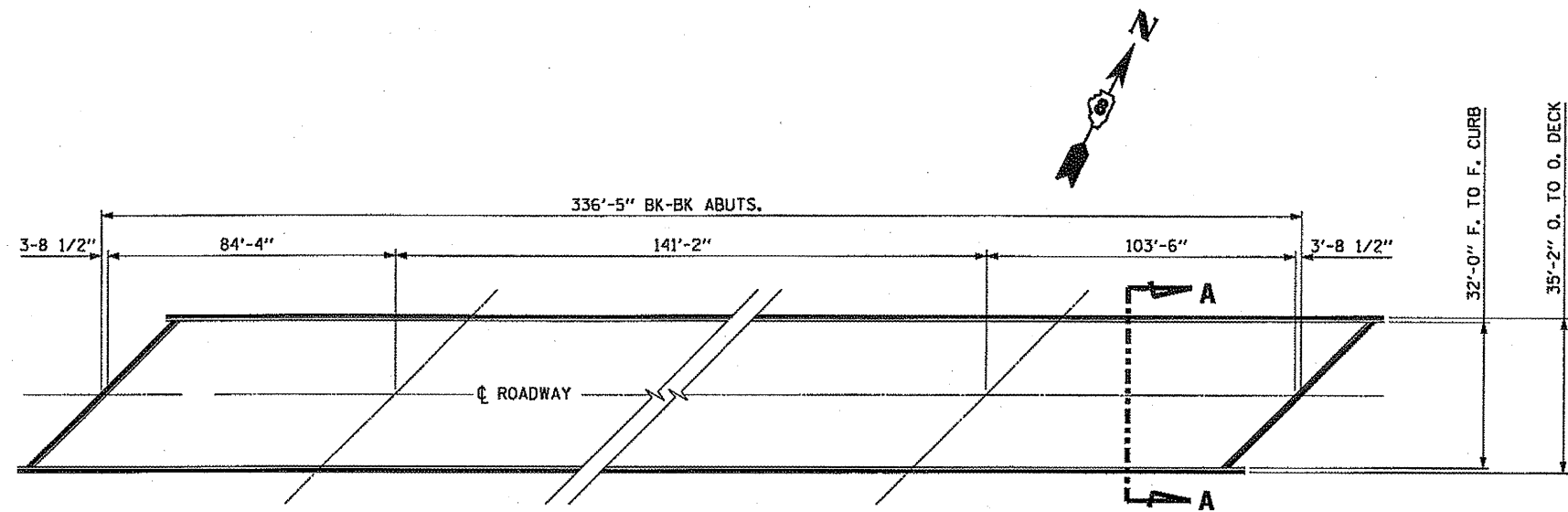
TYPICAL SECTION THRU BRIDGE [A-A]

BRIDGE #003 0051
SECTION 139BR-1

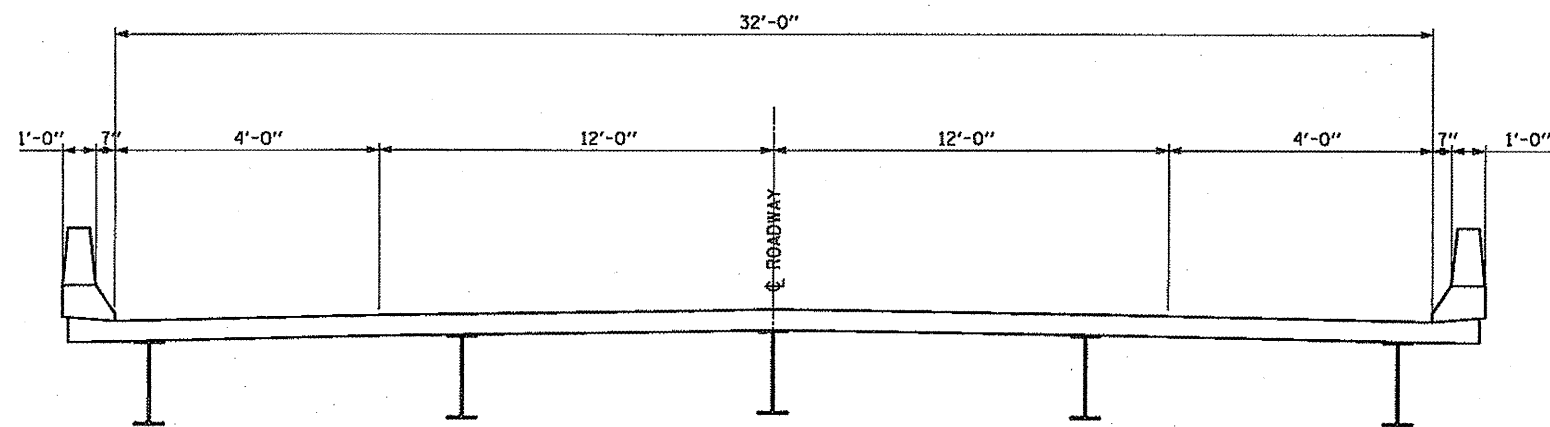


LOCATION MAP

FILE NAME = P:\102166-1\Design\Plans\14 - 5N003-0051.dgn	USER NAME = *USER*	DESIGNED - JAH	REVISED -	STATE OF ILLINOIS DEPARTMENT OF TRANSPORTATION	BRIDGE #003-0051 F.A. ROUTE 42 OVER EAST FORK OF SHOAL CREEK OVERFLOW PLAN & SECTION VIEWS	F.A.P. RTE.	SECTION	COUNTY	TOTAL SHEETS	SHEET NO.
PLOT SCALE = 48.0000' / IN.	DRAWN - JAH	REVISOR -	VAR			BOND	19	14		
PLOT DATE = 12/10/2010	CHECKED - WJS	REVISOR -	CONTRACT NO. 76E41							
DATE - 11-2-10	REVISED -	REVISED -	FED. ROAD DIST. NO. ILLINOIS FED. AID PROJECT DISTRICT 8 BRIDGE DECK 2011-1							
SCALE:		SHEET NO. OF SHEETS STA. TO STA.								



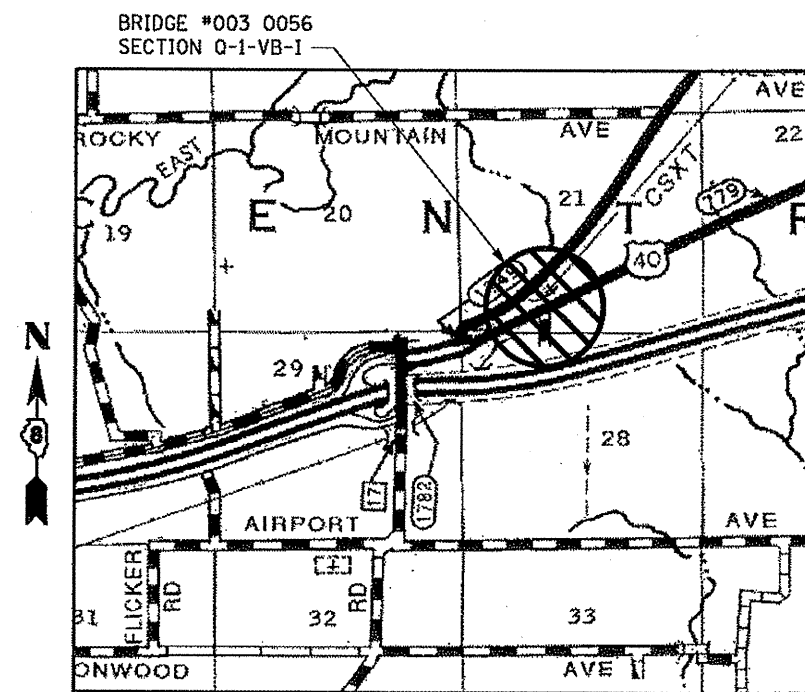
PLAN VIEW



TYPICAL SECTION THRU BRIDGE [A-A]

TOTAL BILL OF MATERIAL

ITEM	UNIT	TOTAL
CONCRETE SEALER	SQ FT	13,242



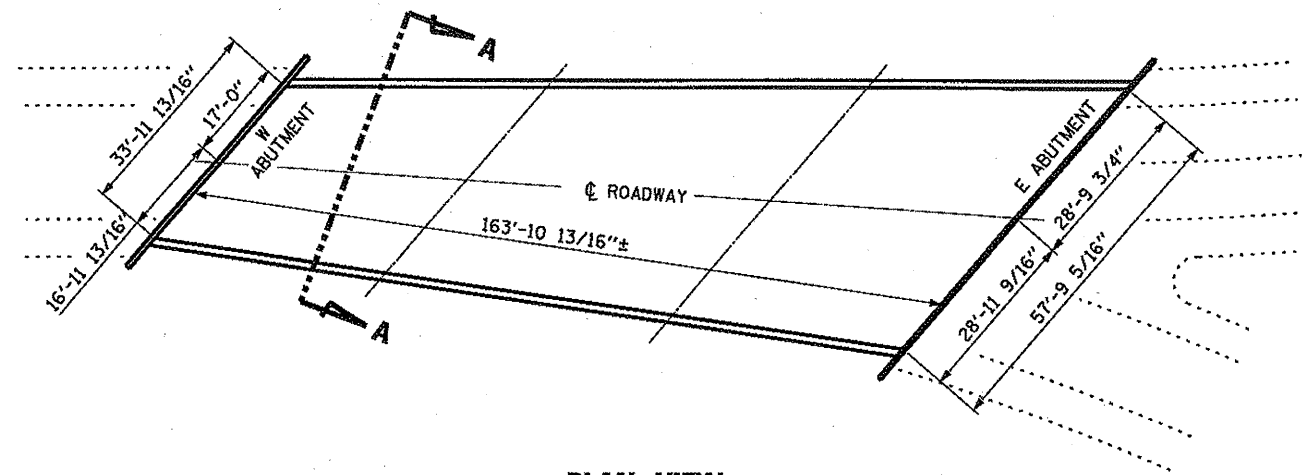
FILE NAME =	USER NAME = #USER#	DESIGNED - JAH	REVISED -
P:\10E2166-1\Design\Plans\15 - SN803-0056.dgn		DRAWN - JAH	REVISED -
	PLOT SCALE = 40.0000' / IN.	CHECKED - WJS	REVISED -
	PLOT DATE = 12/10/2010	DATE - 11-2-10	REVISED -

STATE OF ILLINOIS
DEPARTMENT OF TRANSPORTATION

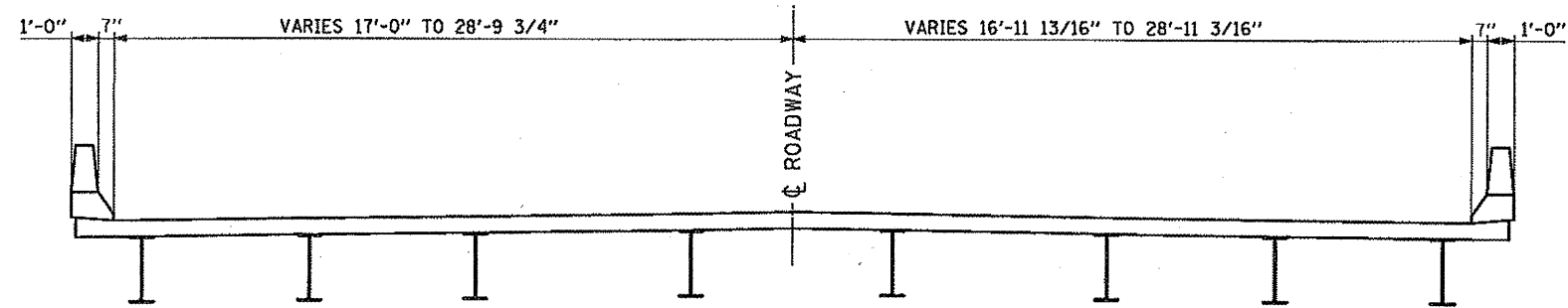
BRIDGE #003-0056 F.A. ROUTE OR-12D (US RTE. 40) OVER
CONRAIL RAILROAD PLAN & SECTION VIEWS

SCALE: SHEET NO. OF SHEETS STA. TO STA.

F.A.P. RTE. VAR	SECTION	COUNTY	TOTAL SHEETS	SHEET NO.
		BOND	19	15
		CONTRACT NO. 76E41		
FED. ROAD DIST. NO. ILLINOIS FED. AID PROJECT DISTRICT 8 BRIDGE DECK 2011-1				



PLAN VIEW

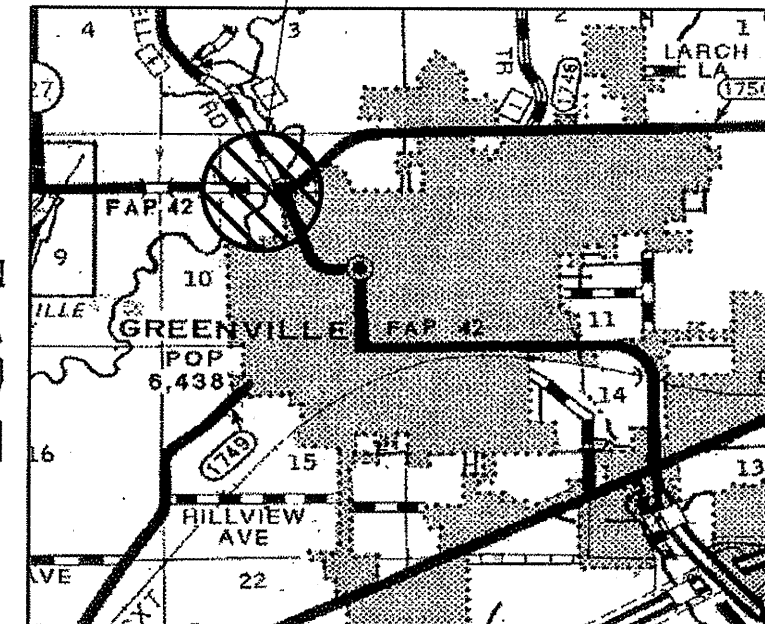


TYPICAL SECTION THRU BRIDGE [A-A]

TOTAL BILL OF MATERIAL

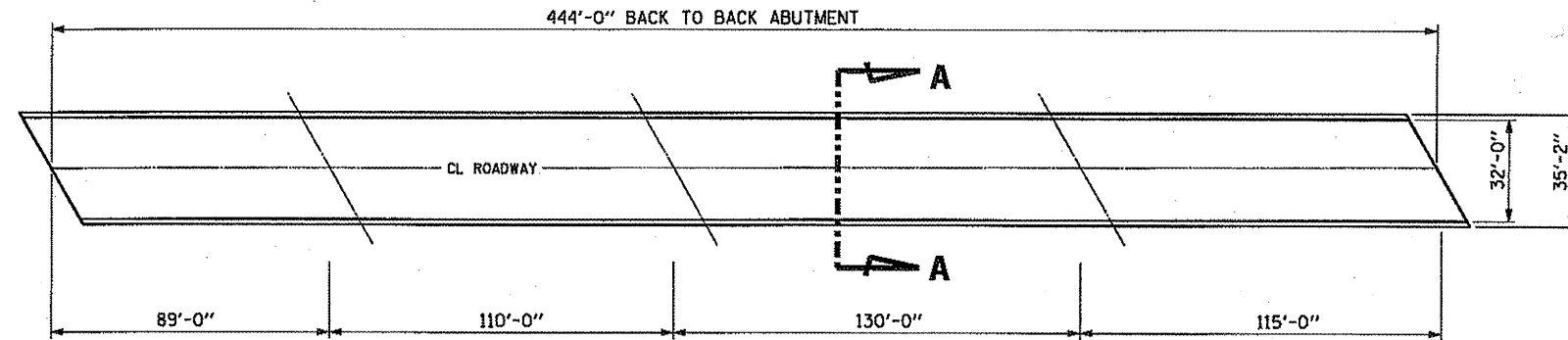
ITEM	UNIT	TOTAL
CONCRETE SEALER	SQ FT	9,030

BRIDGE #003 0057
SECTION 139 BR

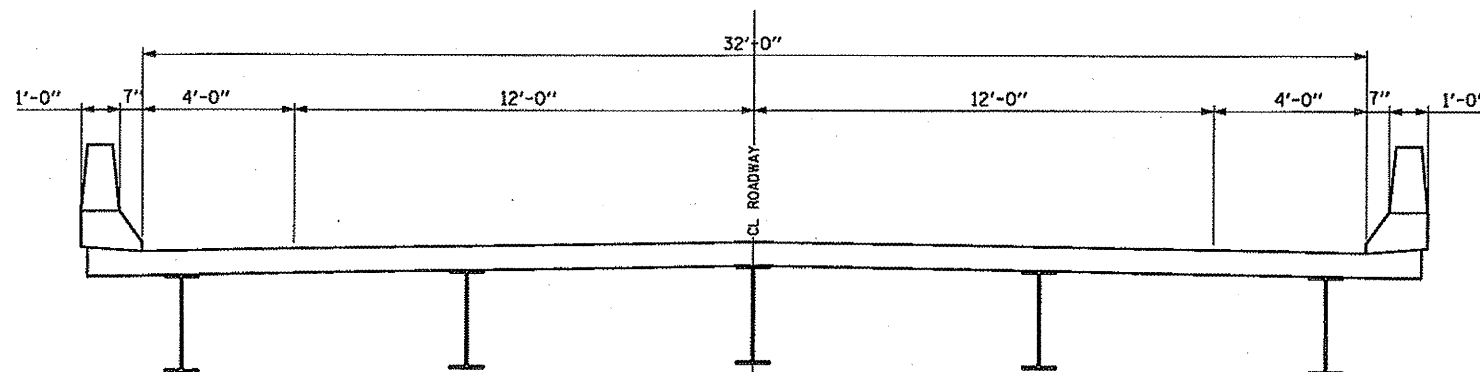


LOCATION MAP

FILE NAME = P:\10E2166-1\Design\Plans\16 - SN003-0057.dgn	USER NAME = #USER#	DESIGNED - JAH	REVISED -	STATE OF ILLINOIS DEPARTMENT OF TRANSPORTATION	BRIDGE #003-0057 F.A.P. ROUTE 42 (IL RTE'S 127 & 140) OVER EAST FORK OF SHOAL CREEK PLAN & SECTION VIEWS	F.A.P. RTE.	SECTION	COUNTY	TOTAL SHEETS	SHEET NO.
PLOT SCALE = 40,0000' / IN.	CHECKED - WJS	REVISED -	VAR				BOND	19	16	
PLOT DATE = 12/18/2018	DATE - 11-2-10	REVISED -				CONTRACT NO. 76E41				
						FED. ROAD DIST. NO.	ILLINOIS FED. AID PROJECT	DISTRICT 8 BRIDGE DECK 2011-1		
				SCALE:	SHEET NO. OF SHEETS STA. TO STA.					



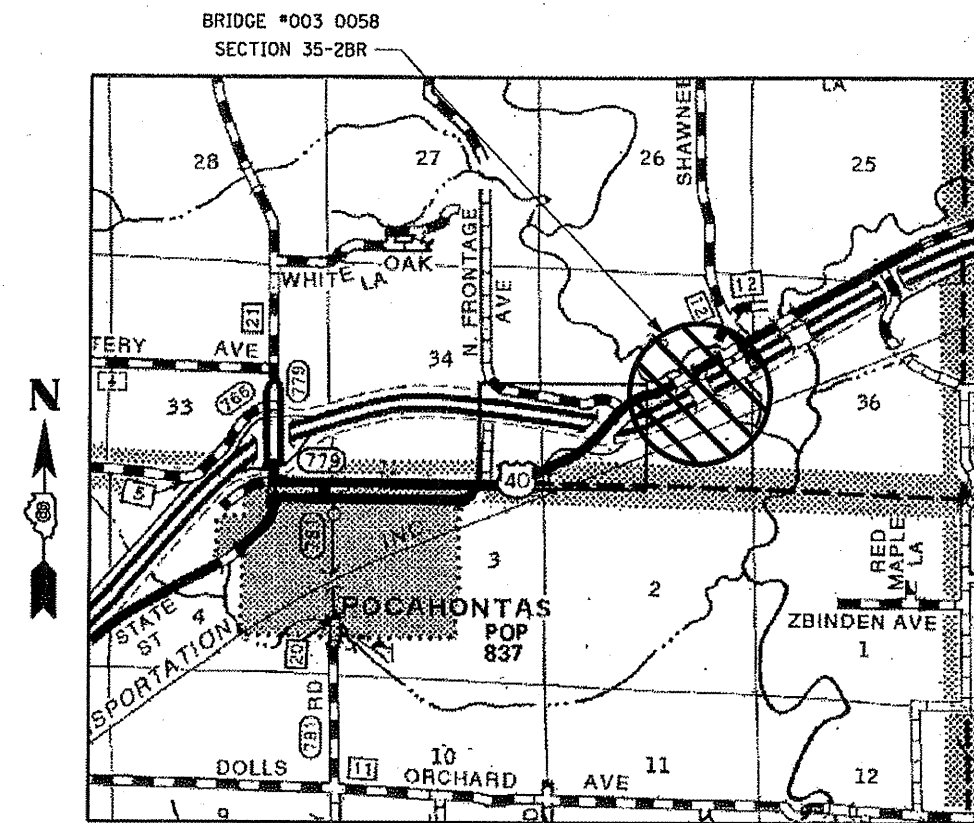
PLAN VIEW



TYPICAL SECTION THRU BRIDGE [A-A]

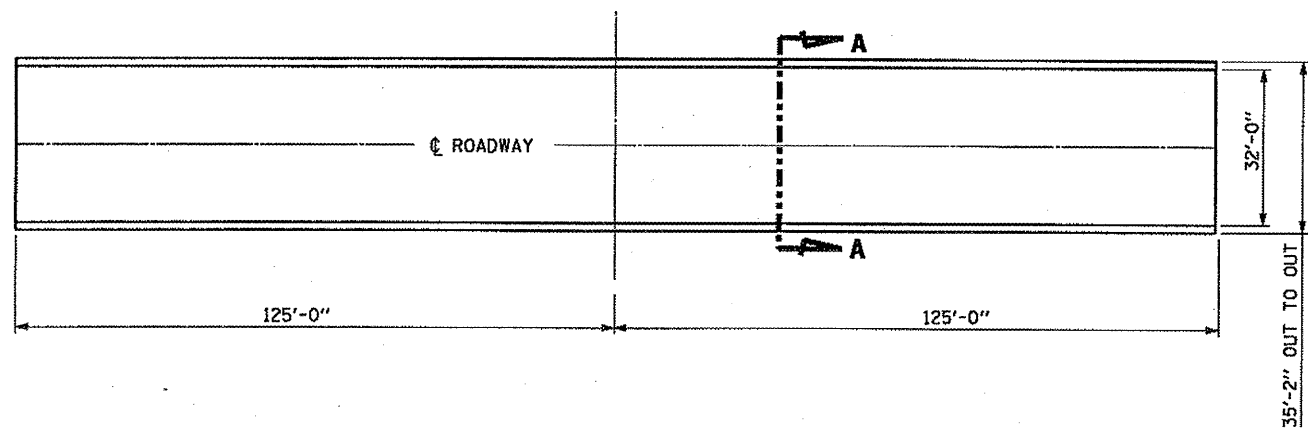
TOTAL BILL OF MATERIAL

ITEM	UNIT	TOTAL
CONCRETE SEALER	SQ FT	17,476

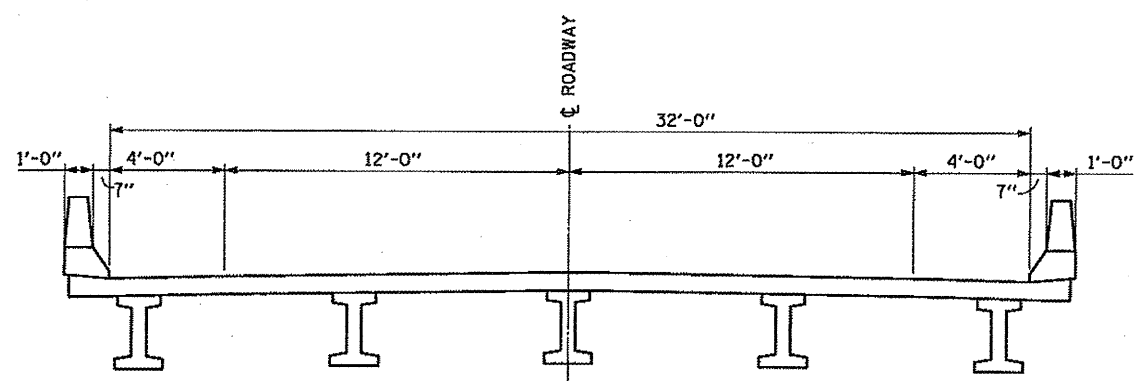


LOCATION MAP

FILE NAME = P:\18E2166-1\Design\Plans\17 - SN003-0058.dgn	USER NAME = *USER*	DESIGNED - JAH	REVISED -	STATE OF ILLINOIS DEPARTMENT OF TRANSPORTATION	BRIDGE #003-0058 OR ROUTE 12 (OLD US RTE 40) OVER SHOAL CREEK PLAN & SECTION VIEWS		F.A.P. RTE. VAR	SECTION	COUNTY	TOTAL SHEETS	SHEET NO.
PLOT SCALE = 60,0000' / IN.	CHECKED - WJS	DATE - 11-2-10	REVISED -				BOND	19	17		
PLOT DATE = 12/18/2010	DATE - 11-2-10	REVISED -	REVISED -		CONTRACT NO. 76E41						
					SCALE:	SHEET NO. OF SHEETS STA. TO STA.	FED. ROAD DIST. NO. ILLINOIS FED. AID PROJECT	DISTRICT 8 BRIDGE DECK 2011-1			



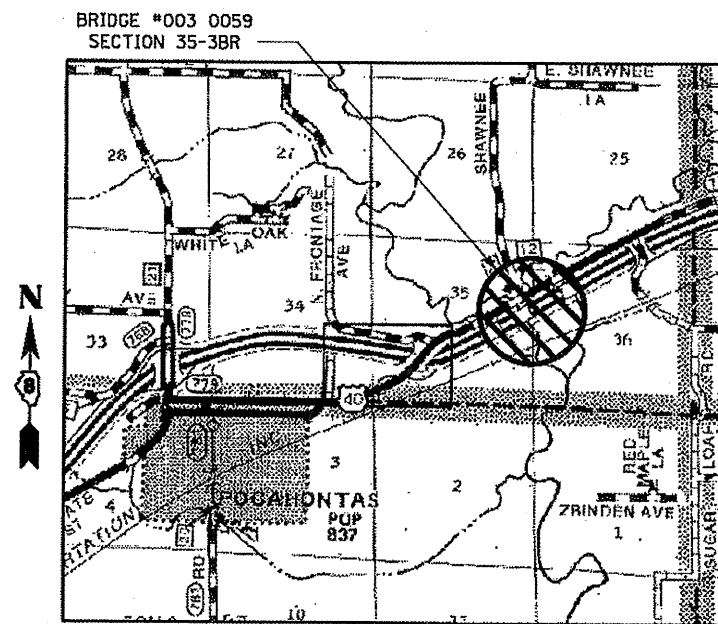
PLAN VIEW



TYPICAL SECTION THRU BRIDGE [A-A]

TOTAL BILL OF MATERIAL

ITEM	UNIT	TOTAL
CONCRETE SEALER	SQ FT	9,840



LOCATION MAP

FILE NAME =	USER NAME = #USER#	DESIGNED - JAH	REVISED -
P:\10E2186-1\Design\Plans\18 - SN003-005.dgn		DRAWN - JAH	REVISED -
	PLDT SCALE = 48.0000' / IN.	CHECKED - WJS	REVISED -
	PLDT DATE = 12/1/2010	DATE - 11-2-10	REVISED -

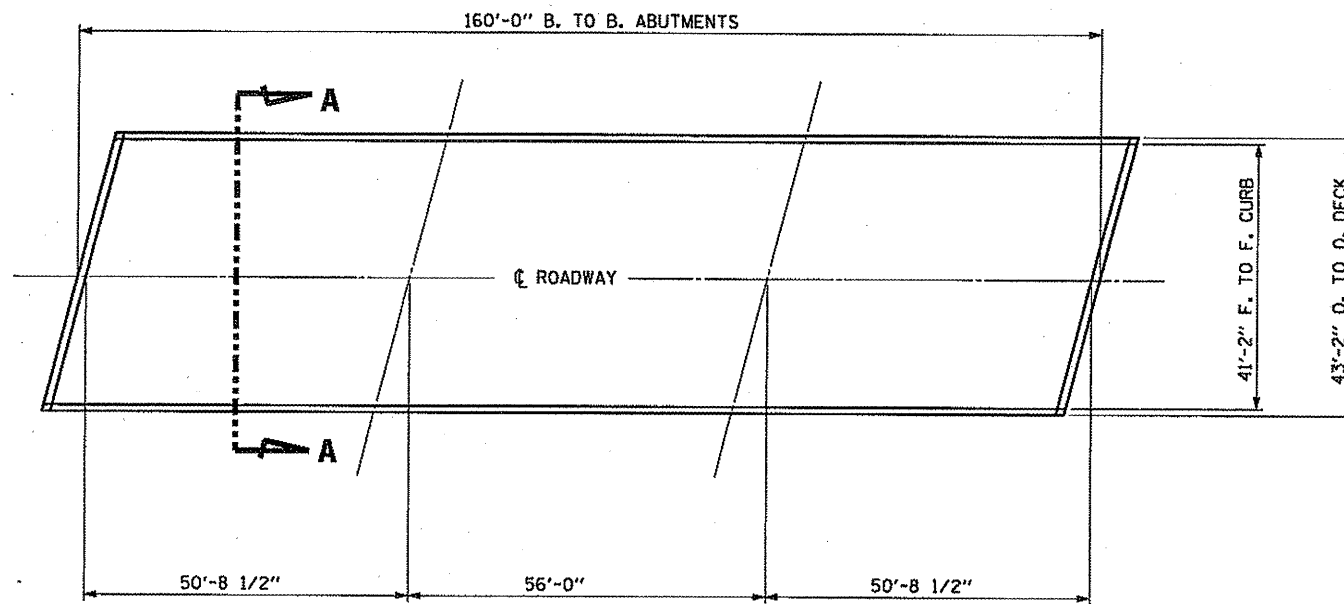
STATE OF ILLINOIS
DEPARTMENT OF TRANSPORTATION

BRIDGE #003-0059 OR ROUTE 12 (OLD US RTE 40)
OVER EAST FORK OF SHOAL CREEK PLAN & SECTION VIEWS

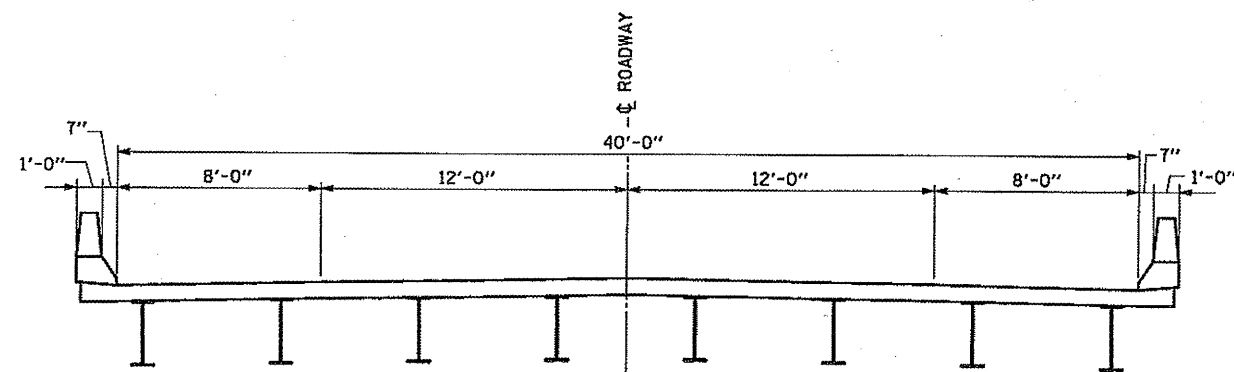
SCALE: SHEET NO. OF SHEETS STA. TO STA.

F.A.P. RTE.	SECTION	COUNTY	TOTAL SHEETS	SHEET NO.
VAR	*	BOND	19	18
CONTRACT NO. 76E41				

FED. ROAD DIST. NO. ILLINOIS FED. AID PROJECT
DISTRICT 8 BRIDGE DECK 2011-1



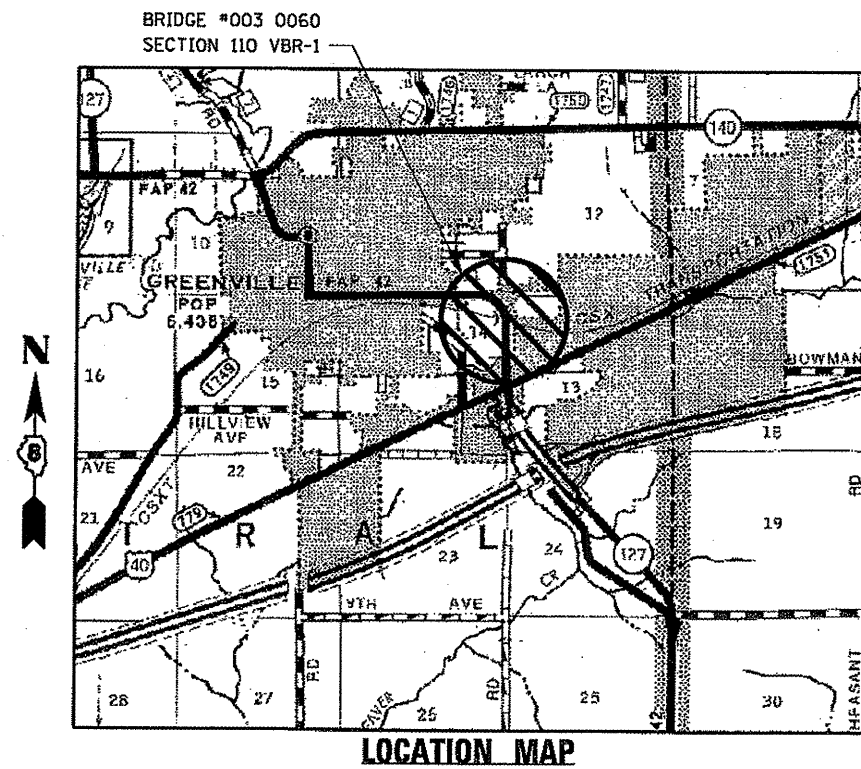
PLAN VIEW



TYPICAL SECTION THRU BRIDGE [A-A]

TOTAL BILL OF MATERIAL

ITEM	UNIT	TOTAL
CONCRETE SEALER	SQ FT	7,573



FILE NAME =	USER NAME = #USER#	DESIGNED - JAH	REVISED -
P:\10E2166-1\Design\Plans\19 - SN003-0060.dgn		DRAWN - JAH	REVISED -
PLOT SCALE = 30.0000' / IN.		CHECKED - WJS	REVISED -
PLOT DATE = 12/7/2010		DATE - 11-2-10	REVISED -

STATE OF ILLINOIS
DEPARTMENT OF TRANSPORTATION

BRIDGE #003-0060 F.A.P. ROUTE 42 (IL RT 127) OVER CONRAIL RAILROAD
PLAN & SECTION VIEWS

SCALE: SHEET NO. OF SHEETS STA. TO STA.

F.A.P. RTE.	SECTION	COUNTY	TOTAL SHEETS	SHEET NO.
VAR		BOND	19	19
CONTRACT NO. 76E41				

FED. ROAD DIST. NO. ILLINOIS FED. AID PROJECT
DISTRICT 8 BRIDGE DECK 2011-1