

| F.A.P. RTE. | SECTION | COUNTY | TOTAL SHEETS | SHEET NO. |
|-------------|---------------------------|----------|--------------------|-----------|
| 310 | DIST 8 BRIDGE DECK 2011-2 | MADISON | 29 | 1 |
| | | ILLINOIS | CONTRACT NO. 76E42 | |

INDEX OF SHEETS

- 1 COVER SHEET
- 2 GENERAL NOTES
- 3 SUMMARY OF QUANTITIES
- 4 SCHEDULES OF QUANTITIES
- 5 TRAFFIC CONTROL DETAILS
- 6-29 BRIDGE DECK SEALING PLANS
HIGHWAY STANDARDS

IDOT HIGHWAY STANDARDS

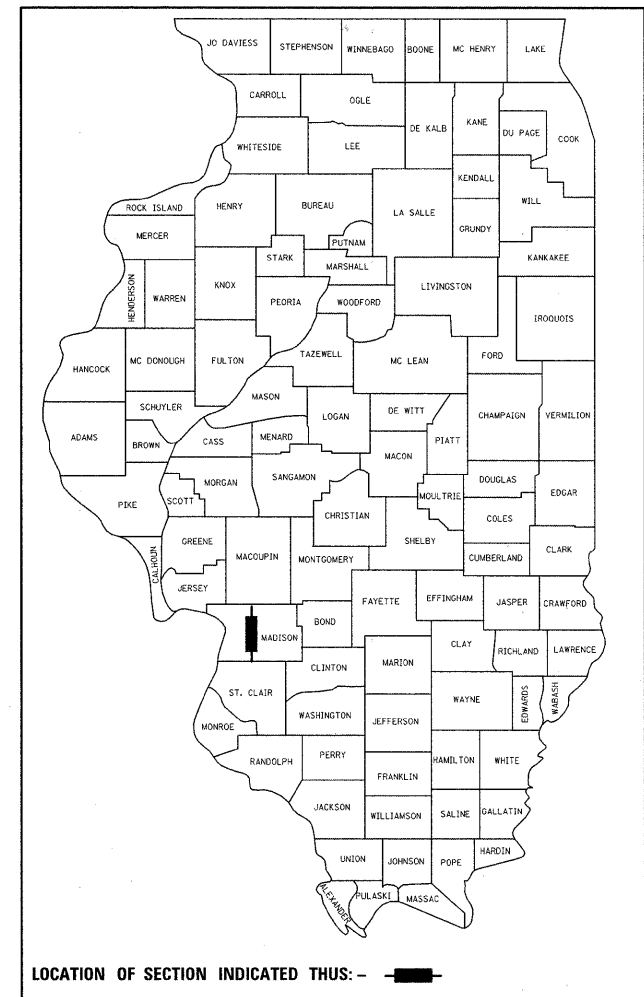
| | | |
|-----------|-----------|-----------|
| 000001-06 | 701400-05 | 701411-07 |
| 001006 | 701406-06 | 701601-07 |
| | | 701901-01 |

**STATE OF ILLINOIS
DEPARTMENT OF TRANSPORTATION
DIVISION OF HIGHWAYS**

**PROPOSED
HIGHWAY PLANS**

**FAP ROUTE 310 (IL 255 /US 67)
SECTION DIST 8 BRIDGE DECK 2011-2
BRIDGE DECK SEALING
MADISON COUNTY
C-98-129-10**

D-98-104-10



LOCATION OF SECTION INDICATED THUS: - ■ -

PLANS PREPARED BY

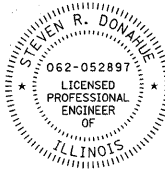
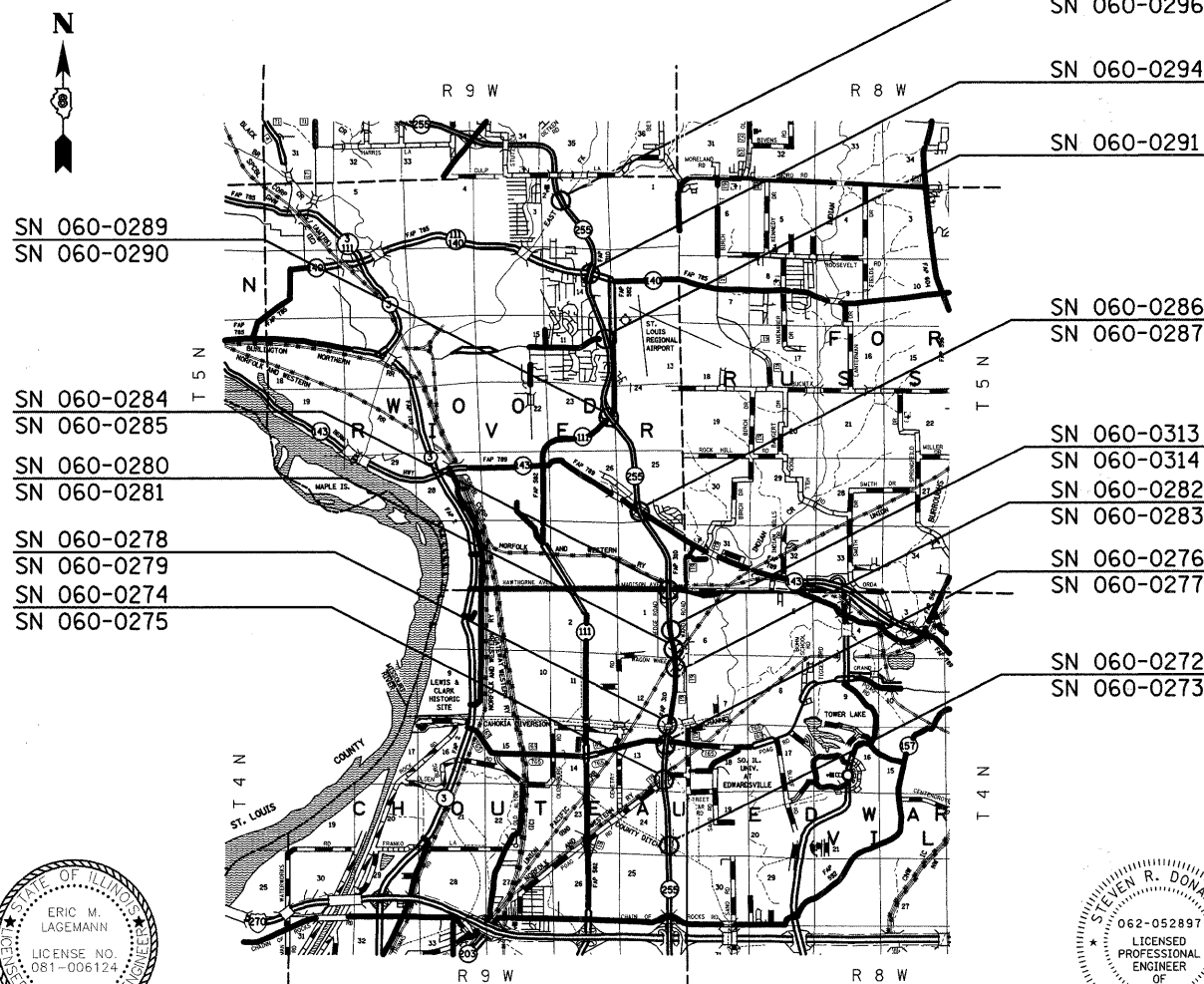
HORNER & SHIFRIN, INC.
ENGINEERS
www.HornerShifrin.com

640 Pierce Boulevard, Suite 200
O'Fallon, Illinois 62269
Phone: (618) 622-3040
Illinois Professional Design Firm
No. 184-000435
License Expires 4/30/2011

STATE OF ILLINOIS
DEPARTMENT OF TRANSPORTATION
DIVISION OF HIGHWAYS

SUBMITTED December 14 20 10
Mary C Jamel
DEPUTY DIRECTOR OF HIGHWAYS, REGION 5 ENGINEER
February 4 20 11
Scott E. Stitt, P.E. I.A.
ENGINEER OF DESIGN AND ENVIRONMENT
February 4 20 11
Christine M. Reed I.A.
DIRECTOR OF HIGHWAYS, CHIEF ENGINEER

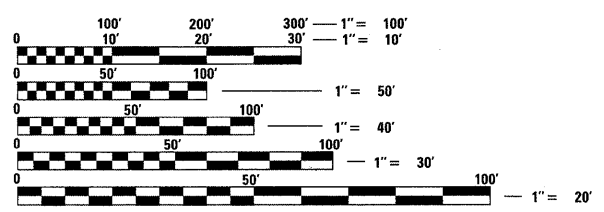
**PRINTED BY THE AUTHORITY
OF THE STATE OF ILLINOIS**



Eric Lagemann 12/1/10
Eric M. Lagemann, P.E., S.E.
License Expires 11/30/2012

St. R. Donahue 12/1/10
Steven R. Donahue, P.E.
License Expires 11/30/2011

SCALE
1" = 2.5 MILES
GROSS LENGTH OF PROJECT 5,782.63 FEET (1.095 MILES)



FULL SIZE PLANS HAVE BEEN PREPARED USING STANDARD ENGINEERING SCALES. REDUCED SIZED PLANS WILL NOT CONFORM TO STANDARD SCALES. IN MAKING MEASUREMENTS ON REDUCED PLANS, THE ABOVE SCALES MAY BE USED.

J.U.L.I.E.
JOINT UTILITY LOCATION INFORMATION FOR EXCAVATION
1-800-892-0123
OR 811

PROJECT ENGINEER PATTI LEBEAU, P.E. 618-346-3179
PROJECT MANAGER HERVE GELIN, P.E. 618-346-3323

CONTRACT NO. 76E42

USER NAME = jpratt\jpratt
 USER SAVED = 12/1/2010
 PLOT DATE = 12/1/2010
 PLOT TIME = 7:46:38 AM
 PLOT SCALE = 50.0023 / / IN.
 PLOT TABLE =
 PLOT DRIVER = H:\xerox\204_Tp-F1e.plt
 FILE NAME = H:\9865808\9865804\CadAT\Location\1_Plan\021.D076E42-Sht-Cover.dgn