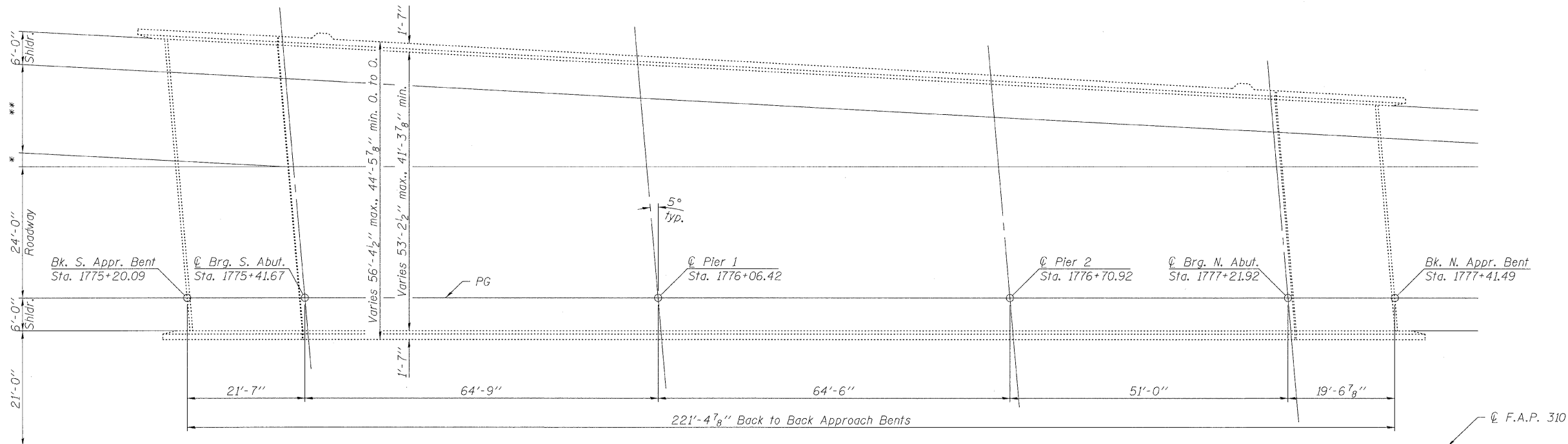


STATE OF ILLINOIS  
DEPARTMENT OF TRANSPORTATION

**GENERAL NOTES**

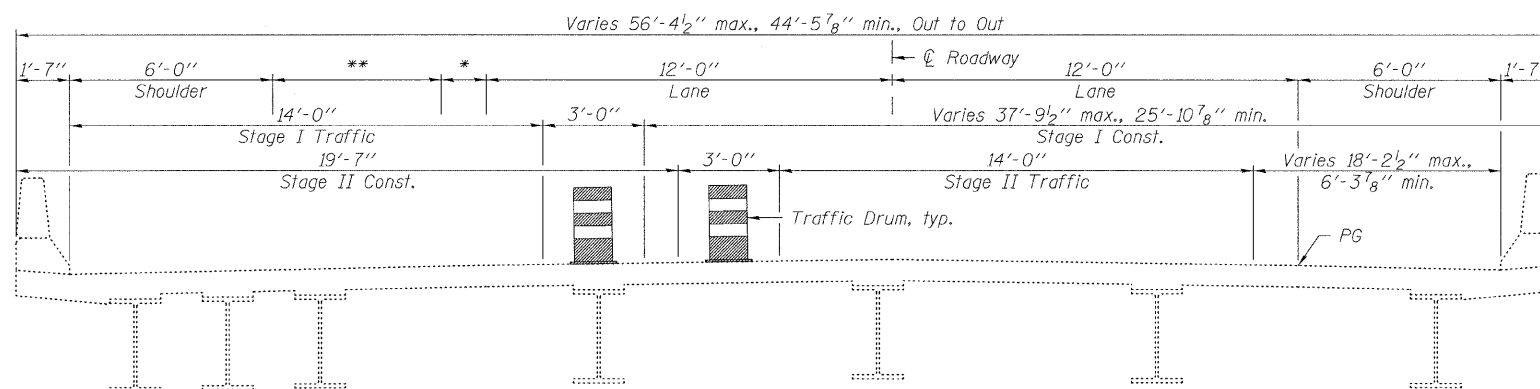
A Concrete Sealer shall be applied to the surfaces of the deck and parapets. See Special Provisions for Bridge Deck Concrete Sealer.

Existing pavement markings shall be temporarily covered prior to application of the deck surface treatment, to prevent the material from being applied over the markings. The temporary covering shall be removed after the application of the deck surface treatment and prior to opening to traffic. Cost included with Concrete Sealer.



\* 1'-0 3/4" max., 0'-0" min.  
\*\* 16'-0" max., 5'-3" min.

**PLAN**



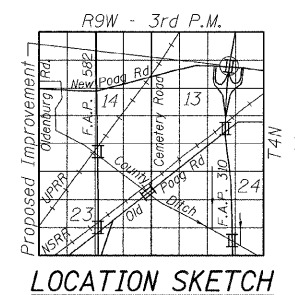
**CROSS SECTION**  
(Looking North)

**TOTAL BILL OF MATERIAL**

ITEM	UNIT	SUPER	SUB	TOTAL
Concrete Sealer	Sq. Ft.	12,105		12,105

**GENERAL PLAN**  
**ILLINOIS ROUTE 255 OVER**  
**NEW POAG ROAD**  
**F.A.P. RTE. 310**  
**SEC. DIST. 8 BRIDGE DECK 2011-2**  
**MADISON COUNTY**  
**STATION 1776+08.78**  
**STRUCTURE NO. 060-0277 (S.B.)**

DESIGNED	---
CHECKED	---
DRAWN	KAK
CHECKED	EML



**LOCATION SKETCH**

**HORNER & SHIFRIN, INC.**  
**ENGINEERS**

SHEET NO. 1 1 SHEETS	F.A.P. RTE. 310	SECTION DIST 8 BRIDGE DECK 2011-2	COUNTY MADISON	TOTAL SHEETS 29	SHEET NO. 11
	CONTRACT NO. 76E42			ILLINOIS FED. AID PROJECT	