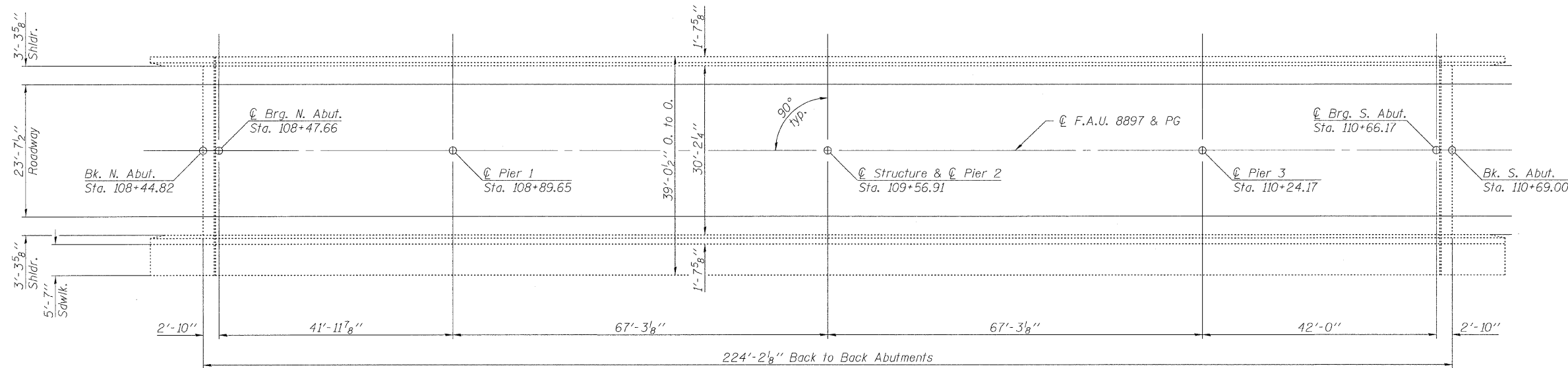


STATE OF ILLINOIS  
DEPARTMENT OF TRANSPORTATION

**GENERAL NOTES**

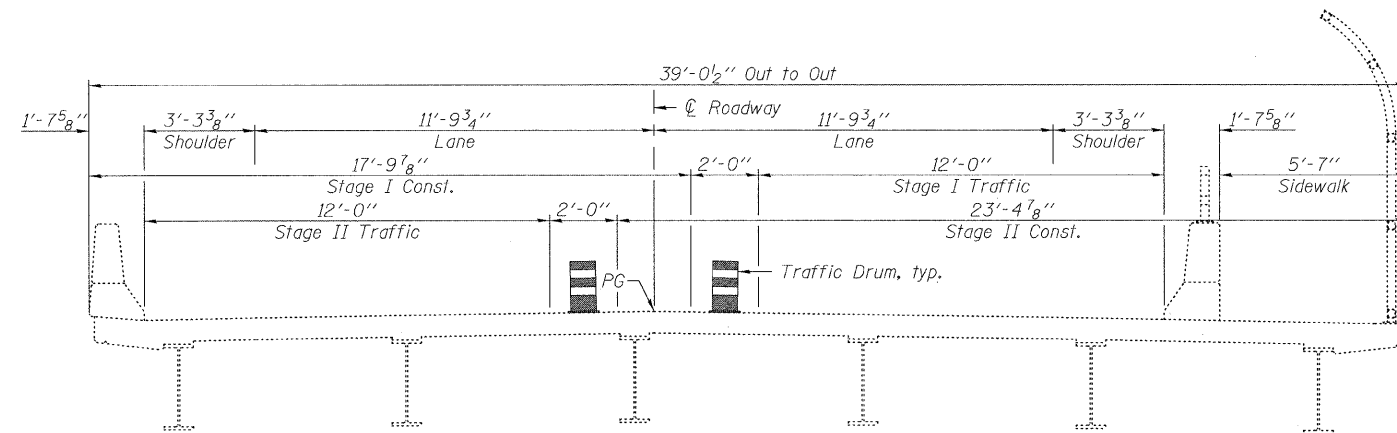
A Concrete Sealer shall be applied to the surfaces of the deck and parapets. See Special Provisions for Bridge Deck Concrete Sealer.

Existing pavement markings shall be temporarily covered prior to application of the deck surface treatment, to prevent the material from being applied over the markings. The temporary covering shall be removed after the application of the deck surface treatment and prior to opening to traffic. Cost included with Concrete Sealer.



**PLAN**

Notes:  
All stations and dimensions are converted from Metric units. Original Metric  
Structure station = 3+339.666.

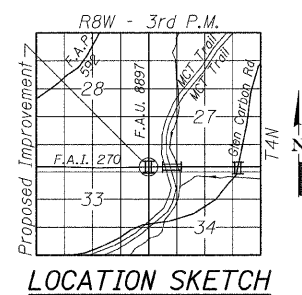


**CROSS SECTION**  
(Looking South)

**TOTAL BILL OF MATERIAL**

ITEM	UNIT	SUPER	SUB	TOTAL
Concrete Sealer	Sq. Ft.	10,587		10,587

DESIGNED	---
CHECKED	---
DRAWN	KAK
CHECKED	EML



**LOCATION SKETCH**

**HORNER & SHIFRIN, INC.**  
ENGINEERS

**GENERAL PLAN**  
**MERIDIAN STREET OVER I-270**  
**F.A.U. RTE. 8897**  
**SEC. DIST. 8 BRIDGE DECK 2011-3**  
**MADISON COUNTY**  
**STATION 109+56.91**  
**STRUCTURE NO. 060-0185**

SHEET NO. 1 1 SHEETS	F.A. RTE.	SECTION	COUNTY	TOTAL SHEETS	SHEET NO.
	VAR.	DIST 8 BRIDGE DECK 2011-3	MADISON	29	27
			CONTRACT NO. 76E43		
ILLINOIS FED. AID PROJECT					