

STATE OF ILLINOIS
DEPARTMENT OF TRANSPORTATION
DIVISION OF HIGHWAYS

**PROPOSED
HIGHWAY PLANS**

FAP ROUTE 682 (IL RTE. 4)
SECTION 21B-HDF

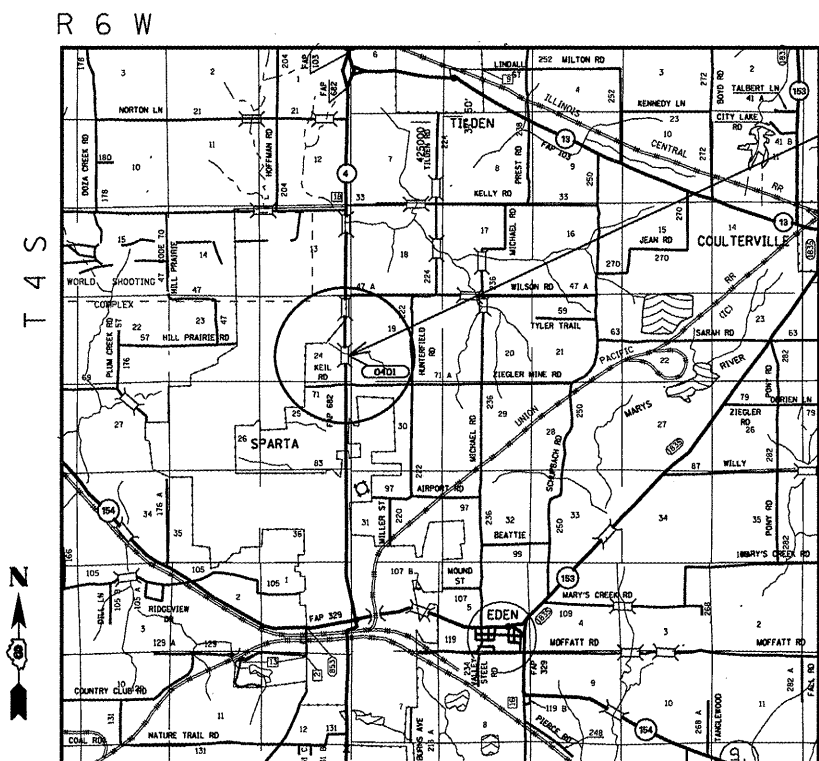
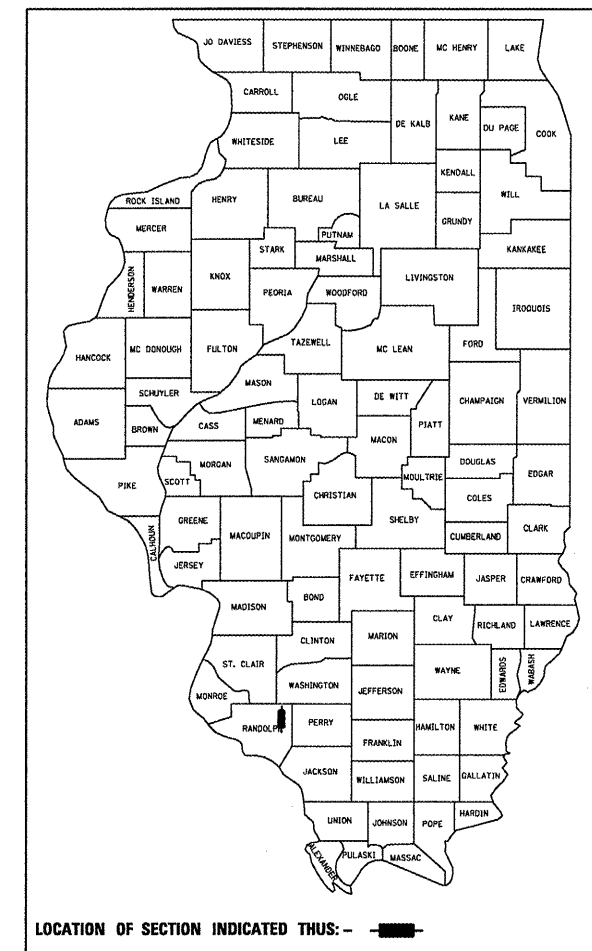
BRIDGE RAIL & BEAM REPAIR – MCHDF
RANDOLPH COUNTY

C-98-020-11

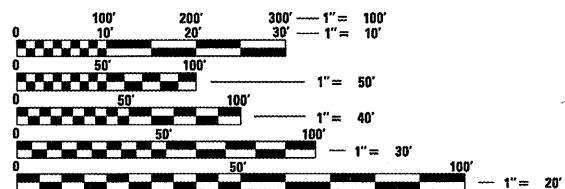
F.A.P. RTE.	SECTION	COUNTY	TOTAL SHEETS	SHEET NO.
682	21B-HDF	RANDOLPH	7	1
		ILLINOIS	CONTRACT NO. 76E61	

FOR INDEX OF SHEETS, SEE SHEET NO. 2

D-98-021-11



PROJECT LOCATION

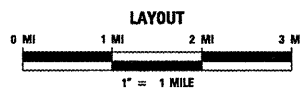


FULL SIZE PLANS HAVE BEEN PREPARED USING STANDARD ENGINEERING SCALES. REDUCED SIZED PLANS WILL NOT CONFORM TO STANDARD SCALES. IN MAKING MEASUREMENTS ON REDUCED PLANS, THE ABOVE SCALES MAY BE USED.

J.U.L.I.E.
JOINT UTILITY LOCATION INFORMATION FOR EXCAVATION
1-800-892-0123
OR 811

PROJECT ENGINEER: PATTI LEBEAU (618)346-3179
PROJECT MANAGER: ART MUEHLFELD (618)-346-3209

CONTRACT NO. 76E61



LAYOUT
LATITUDE = 38.166794
LONGITUDE = 89.703417

ADT-
2010 = 6,4000 (ESTIMATED)
2015 = 10,300 (ESTIMATED)
SU = 3.0% MU = 2.6%
GROSS LENGTH = 16 FT.
NET LENGTH = 16 FT.

STATE OF ILLINOIS
DEPARTMENT OF TRANSPORTATION
DIVISION OF HIGHWAYS

SUBMITTED December 15 20 10
Mary C Jamel
DEPUTY DIRECTOR OF HIGHWAYS, REGION 5 ENGINEER
Feb 4 20 11
Scott E. Stitt, P.E. ISE
Acting ENGINEER OF DESIGN AND ENVIRONMENT
Feb 4 20 11
Christine M. Reed ISE
DIRECTOR OF HIGHWAYS, CHIEF ENGINEER

**PRINTED BY THE AUTHORITY
OF THE STATE OF ILLINOIS**