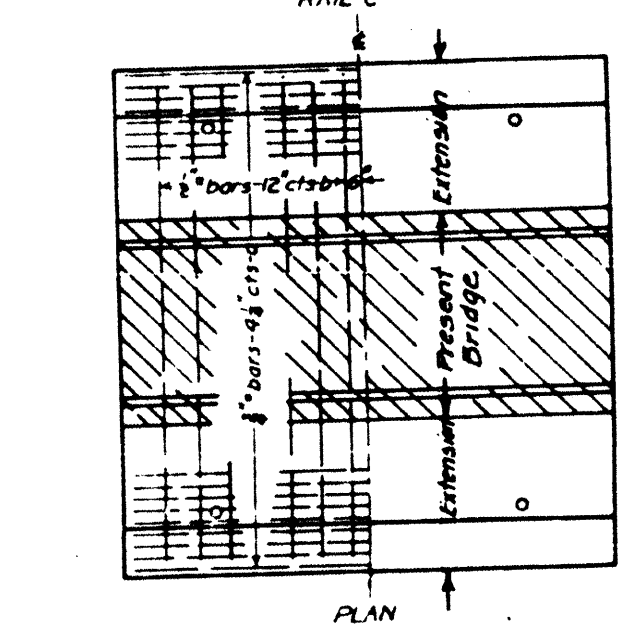
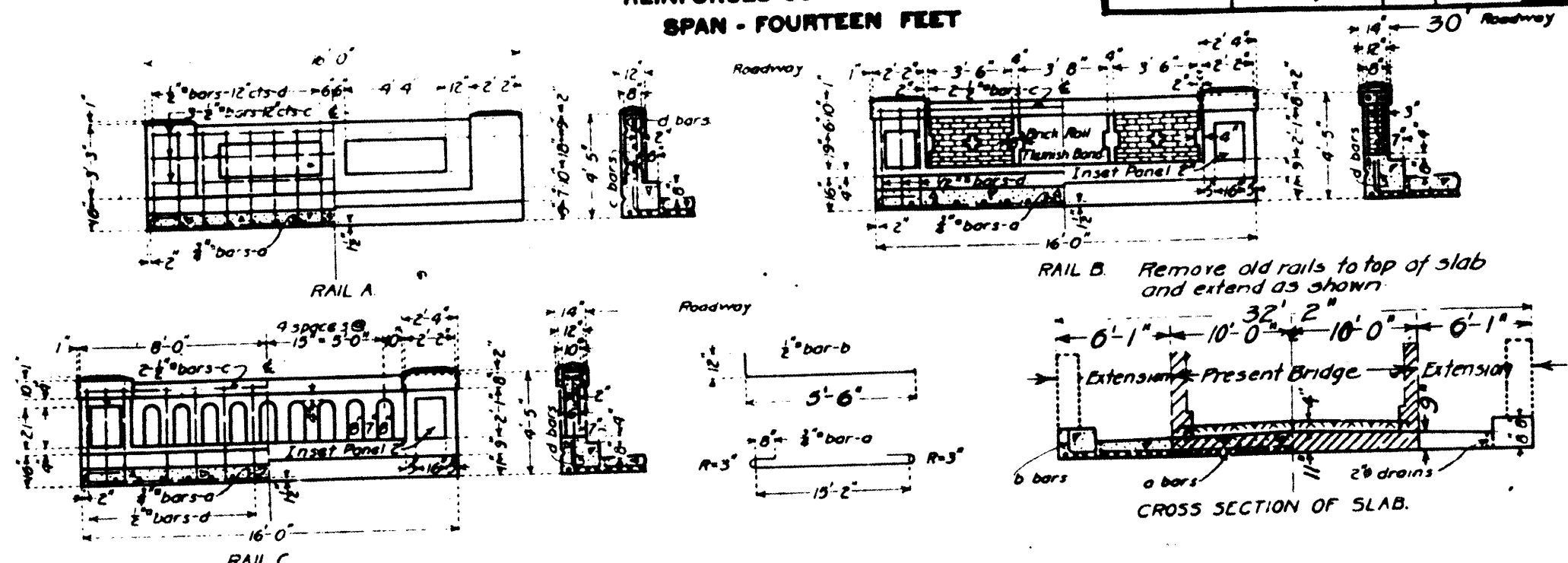


STATE OF ILLINOIS  
DEPARTMENT OF PUBLIC WORKS & BUILDINGS  
DIVISION OF HIGHWAYS

REINFORCED CONCRETE SLAB  
SPAN - FOURTEEN FEET

Sheet No. 1  
of 2 Sheets

ROAD ISSUE ROUTE NO.	COUNTY	SEC.	TOTAL SHEETS	SHEET NO.
13	Randolph	21B	34	31



BILL OF MATERIAL

	16 FT. ROADWAY	18 FT. ROADWAY	20 FT. ROADWAY	24 FT. ROADWAY	30 FT. ROADWAY
<b>RAIL A</b>	Bars No. Size Length a 50 3/4" 18'-0" b 14 1/2" 15'-0" c 4 1/2" 15'-6" d 32 1/2" 4'-0" Steel-Lbs 2140 Concrete-Cu Yds 12.1	Bars No. Size Length a 56 3/4" 18'-0" b 14 1/2" 15'-0" c 4 1/2" 15'-6" d 32 1/2" 4'-0" Steel-Lbs 2370 Concrete-Cu Yds 13.0	Bars No. Size Length a 62 3/4" 18'-0" b 14 1/2" 15'-0" c 4 1/2" 15'-6" d 32 1/2" 4'-0" Steel-Lbs 2600 Concrete-Cu Yds 13.9	Bars No. Size Length a 79 3/4" 18'-0" b 28 1/2" 14'-6" c 4 1/2" 15'-6" d 32 1/2" 4'-0" Steel-Lbs 3030 Concrete-Cu Yds 15.1	Bars No. Size Length a 90 3/4" 18'-0" b 28 1/2" 14'-6" c 4 1/2" 15'-6" d 32 1/2" 4'-0" Steel-Lbs 3700 Concrete-Cu Yds 16.3
<b>RAIL B</b>	Bars No. Size Length a 50 3/4" 18'-0" b 14 1/2" 15'-0" c 4 1/2" 15'-6" d 12 1/2" 4'-0" Steel-Lbs 2340 Concrete-Cu Yds 11.8 Brick Rail-Cu Yds 1.0	Bars No. Size Length a 56 3/4" 18'-0" b 14 1/2" 15'-0" c 4 1/2" 15'-6" d 12 1/2" 4'-0" Steel-Lbs 2570 Concrete-Cu Yds 12.2 Brick Rail-Cu Yds 1.0	Bars No. Size Length a 62 3/4" 18'-0" b 14 1/2" 15'-0" c 4 1/2" 15'-6" d 12 1/2" 4'-0" Steel-Lbs 2800 Concrete-Cu Yds 13.1 Brick Rail-Cu Yds 1.0	Bars No. Size Length a 79 3/4" 18'-0" b 28 1/2" 14'-6" c 4 1/2" 15'-6" d 12 1/2" 4'-0" Steel-Lbs 3230 Concrete-Cu Yds 14.9 Brick Rail-Cu Yds 1.0	Bars No. Size Length a 90 3/4" 18'-0" b 28 1/2" 14'-6" c 4 1/2" 15'-6" d 12 1/2" 4'-0" Steel-Lbs 3900 Concrete-Cu Yds 16.3 Brick Rail-Cu Yds 1.0
<b>RAIL C</b>	Bars No. Size Length a 50 3/4" 18'-0" b 14 1/2" 15'-0" c 4 1/2" 15'-6" d 28 1/2" 4'-0" Steel-Lbs 2100 Concrete-Cu Yds 11.7	Bars No. Size Length a 56 3/4" 18'-0" b 14 1/2" 15'-0" c 4 1/2" 15'-6" d 28 1/2" 4'-0" Steel-Lbs 2330 Concrete-Cu Yds 12.6	Bars No. Size Length a 62 3/4" 18'-0" b 14 1/2" 15'-0" c 4 1/2" 15'-6" d 28 1/2" 4'-0" Steel-Lbs 2560 Concrete-Cu Yds 13.5	Bars No. Size Length a 79 3/4" 18'-0" b 28 1/2" 14'-6" c 4 1/2" 15'-6" d 28 1/2" 4'-0" Steel-Lbs 3010 Concrete-Cu Yds 14.3	Bars No. Size Length a 90 3/4" 18'-0" b 28 1/2" 14'-6" c 4 1/2" 15'-6" d 28 1/2" 4'-0" Steel-Lbs 3680 Concrete-Cu Yds 16.0

Class A concrete to be used throughout  
Proportions - 1 2 4.

USE RAIL B, 30 FT. ROADWAY

Note: The surface of old concrete, which comes in contact with new concrete, shall be chipped to expose the coarse aggregate swept free from dust and loose particles, and shall be given a coat of thin one to two mortar before new concrete is poured. Extend exposed steel into new work.

STA 100+19  
STATE BOND ISSUE RT. 13  
SECTION 21B RANDOLPH CO

Get 5.23  
G.F. Bunn  
[Signature]  
[Signature]  
C. Oldis

DESIGNED	Walter J. Zick
CHECKED	J.H. Archman
DRAWN	W.D. Johnston
APPROVED	[Signature]
DATE	12/8/2010