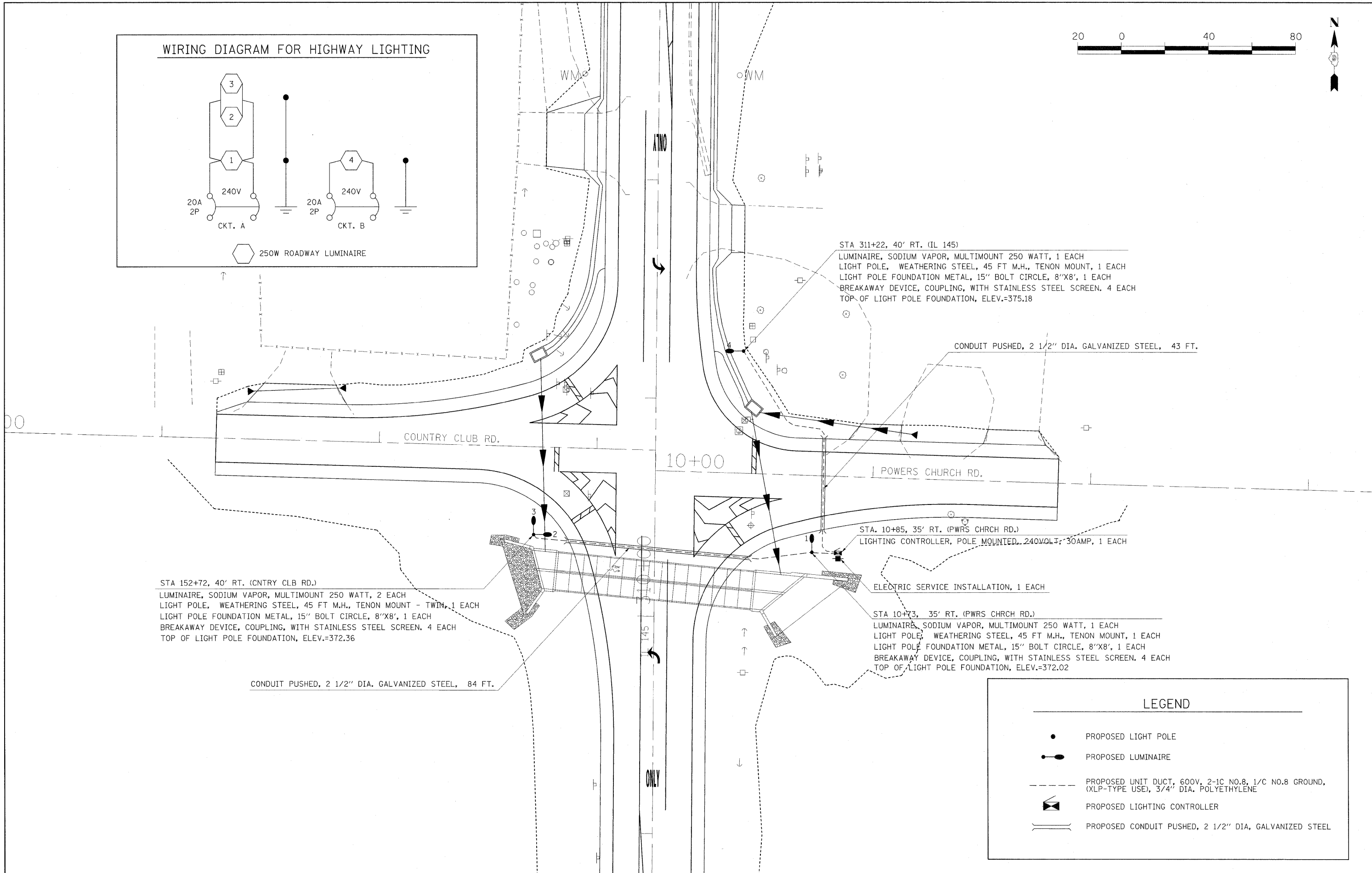
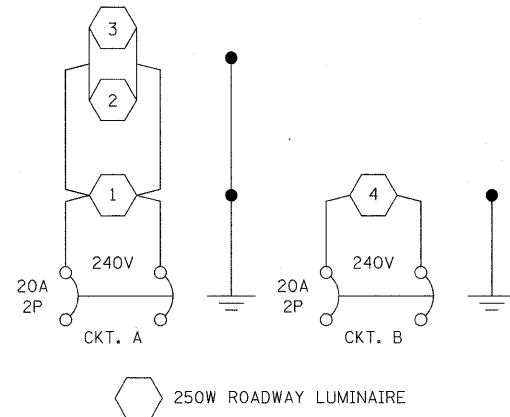


WIRING DIAGRAM FOR HIGHWAY LIGHTING



STA 311+22, 40' RT. (IL 145)
 LUMINAIRE, SODIUM VAPOR, MULTIMOUNT 250 WATT, 1 EACH
 LIGHT POLE, WEATHERING STEEL, 45 FT M.H., TENON MOUNT, 1 EACH
 LIGHT POLE FOUNDATION METAL, 15" BOLT CIRCLE, 8"X8", 1 EACH
 BREAKAWAY DEVICE, COUPLING, WITH STAINLESS STEEL SCREEN. 4 EACH
 TOP OF LIGHT POLE FOUNDATION, ELEV.=375.18

CONDUIT PUSHED, 2 1/2" DIA. GALVANIZED STEEL, 43 FT.

STA 152+72, 40' RT. (CNTRY CLB RD.)
 LUMINAIRE, SODIUM VAPOR, MULTIMOUNT 250 WATT, 2 EACH
 LIGHT POLE, WEATHERING STEEL, 45 FT M.H., TENON MOUNT - TWIN, 1 EACH
 LIGHT POLE FOUNDATION METAL, 15" BOLT CIRCLE, 8"X8", 1 EACH
 BREAKAWAY DEVICE, COUPLING, WITH STAINLESS STEEL SCREEN. 4 EACH
 TOP OF LIGHT POLE FOUNDATION, ELEV.=372.36

CONDUIT PUSHED, 2 1/2" DIA. GALVANIZED STEEL, 84 FT.

STA. 10+85, 35' RT. (PWRS CHRCH RD.)
 LIGHTING CONTROLLER, POLE MOUNTED, 240VOLT, 30AMP, 1 EACH

ELECTRIC SERVICE INSTALLATION, 1 EACH

STA 10+73, 35' RT. (PWRS CHRCH RD.)
 LUMINAIRE, SODIUM VAPOR, MULTIMOUNT 250 WATT, 1 EACH
 LIGHT POLE, WEATHERING STEEL, 45 FT M.H., TENON MOUNT, 1 EACH
 LIGHT POLE FOUNDATION METAL, 15" BOLT CIRCLE, 8"X8", 1 EACH
 BREAKAWAY DEVICE, COUPLING, WITH STAINLESS STEEL SCREEN. 4 EACH
 TOP OF LIGHT POLE FOUNDATION, ELEV.=372.02

LEGEND

- PROPOSED LIGHT POLE
- ◐ PROPOSED LUMINAIRE
- PROPOSED UNIT DUCT, 600V, 2-1C NO.8, 1/C NO.8 GROUND, (XLP-TYPE USE), 3/4" DIA. POLYETHYLENE
- ◻ PROPOSED LIGHTING CONTROLLER
- ══ PROPOSED CONDUIT PUSHED, 2 1/2" DIA, GALVANIZED STEEL

FILE NAME =
 c:\pw\work\pw\dot\noasdp\d0125145\d97511

USER NAME = noasdp
 S.sht.plndgn
 PLOT SCALE = 20.0000' / IN.
 PLOT DATE = 12/14/2010

DESIGNED -
 DRAWN -
 CHECKED -
 DATE -

REVISED -
 REVISED -
 REVISED -
 REVISED -

STATE OF ILLINOIS
 DEPARTMENT OF TRANSPORTATION

HIGHWAY LIGHTING PLAN

SCALE: SHEET NO. OF SHEETS STA. TO STA.

| F.A.P. RTE. | SECTION | COUNTY | TOTAL SHEETS | SHEET NO. |
|---------------------------|----------|--------|--------------|-----------|
| 132 | 102(N,L) | MASSAC | 79 | 24 |
| CONTRACT NO. 78116 | | | | |
| ILLINOIS FED. AID PROJECT | | | | |