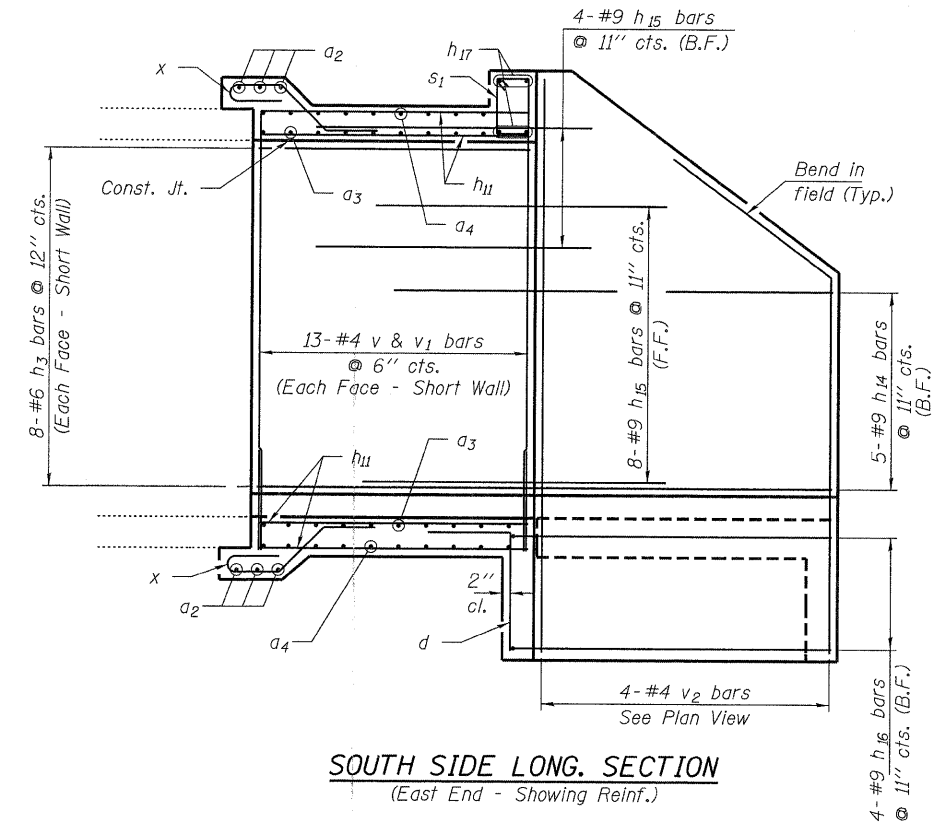
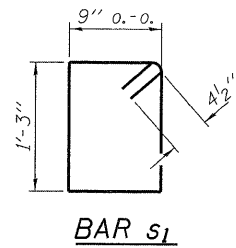
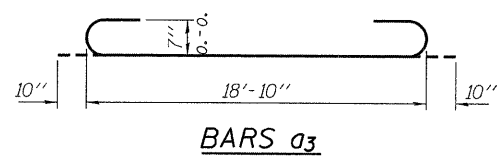
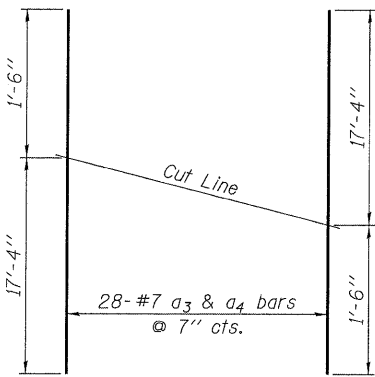


CUTTING DIAGRAM

Order v_5 bars full length. Cut as shown and use the remainder in same face of wall.

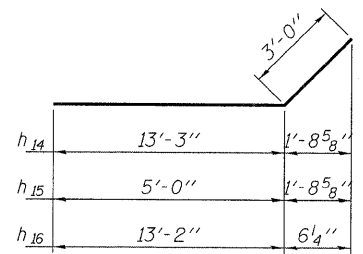


SOUTH SIDE LONG SECTION
(East End - Showing Reinf.)

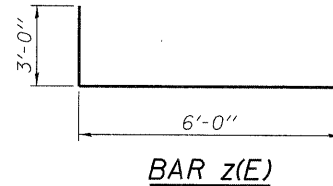


CUTTING DIAGRAM

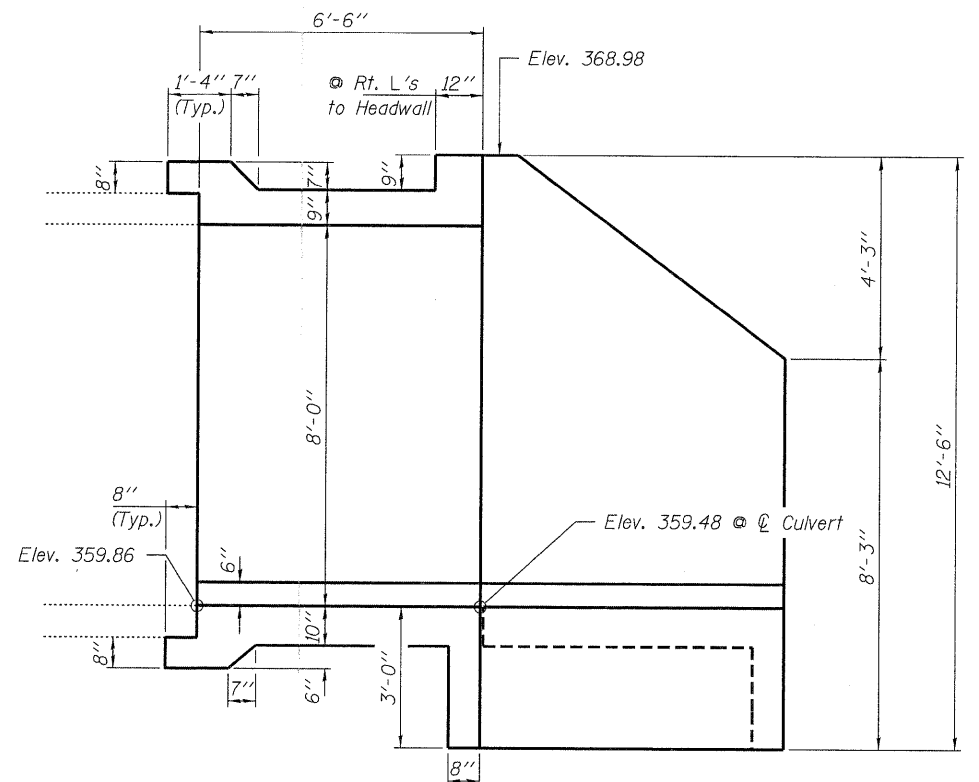
Order a_3 & a_4 bars full length. Cut as shown and use the remainder in opposite face of slab.



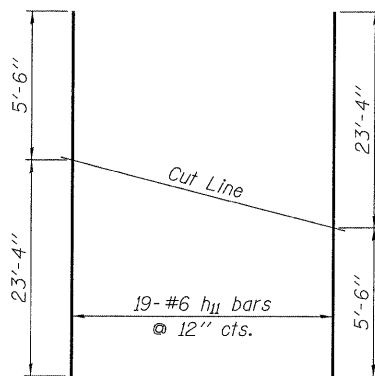
BARS h_{14} , h_{15} & h_{16}



BAR $z(E)$

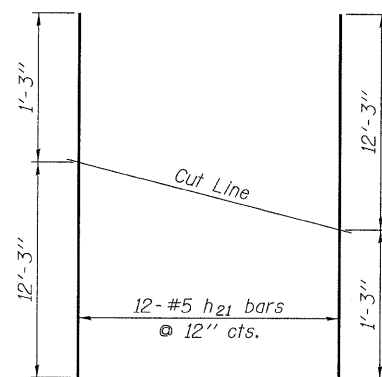


SOUTH SIDE LONG SECTION
(East End - Showing Dimensions)



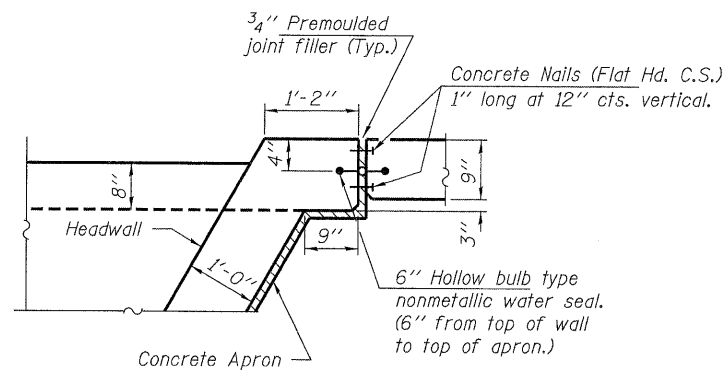
CUTTING DIAGRAM

Order h_{11} bars full length. Cut as shown and use the remainder in opposite face of slab.



CUTTING DIAGRAM

Order h_{21} bars full length. Cut as shown and use the remainder in opposite face of slab.



DETAIL A

FILE NAME = 100260-sh-culvert.dgn	USER NAME =	DESIGNED - A.S.L.	REVISED -	STATE OF ILLINOIS DEPARTMENT OF TRANSPORTATION	CULVERT DETAILS - EAST END STRUCTURE NO. 064-7043	IL	SECTION	COUNTY	TOTAL SHEETS	SHEET NO.	
HAMPTON, LENZINI AND RENWICK, INC. 3005 STEVENSON DRIVE, SUITE 201 SPRINGFIELD, ILLINOIS 62703	PLOT SCALE =	CHECKED - D.W.T.	REVISED -			145	102 (N.L.)	MASSAC	79	30	
ILLINOIS PROFESSIONAL DESIGN FIRM LS / PE / SE CORP. 184 000989	PLOT DATE = 11/18/2010	DRAWN - D.A.B.	REVISED -			CONTRACT NO. 78116					
		CHECKED - M.D.C.	REVISED -			SHEET NO. 6 OF 8 SHEETS					