

NOTE: ALL STATIONING FOR PAY ITEM LOCATIONS ARE BASED ON THE CENTERLINE OF THE LANES THEY ARE RELATED.

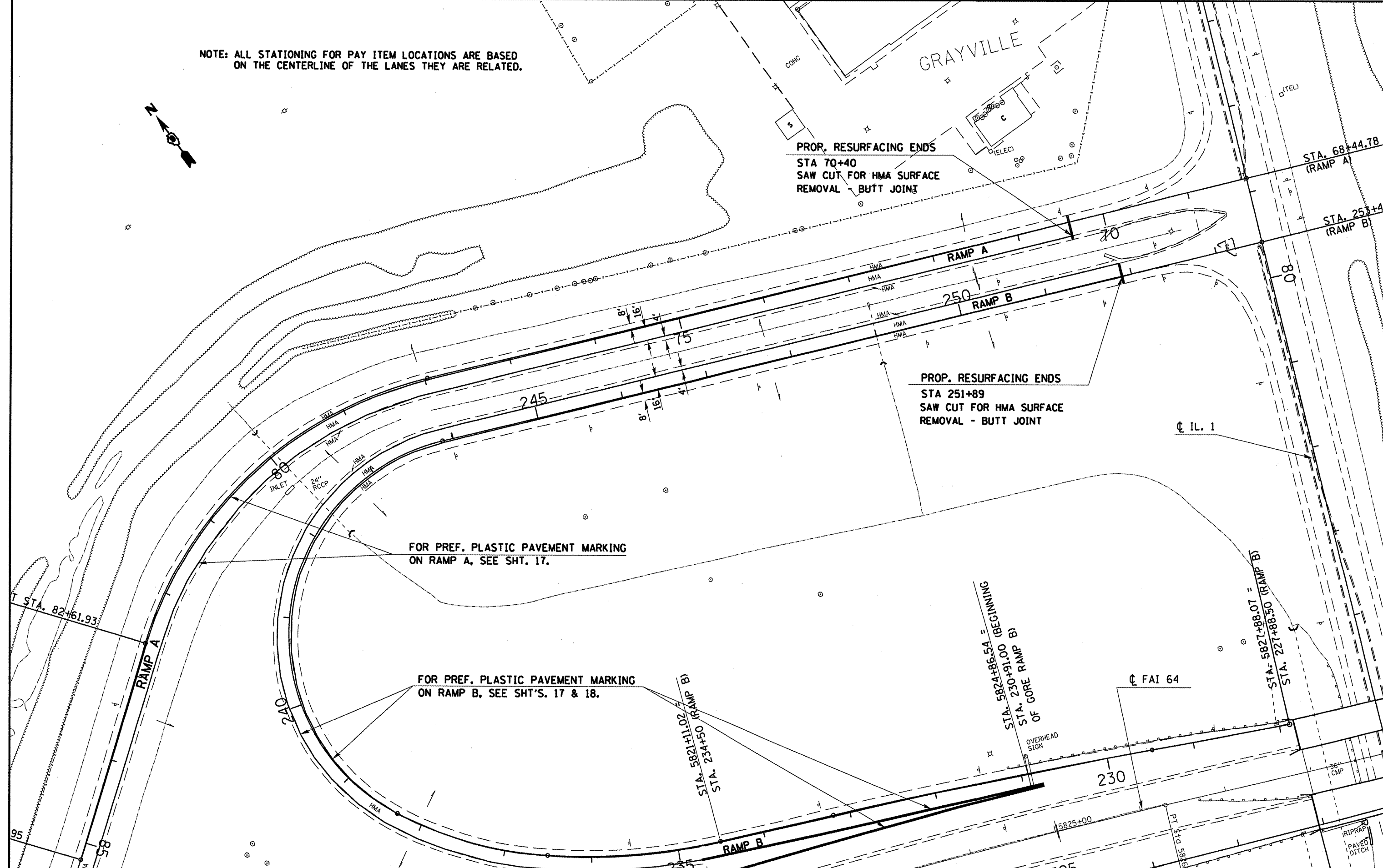


PROP. RESURFACING ENDS
 STA 70+40
 SAW CUT FOR HMA SURFACE
 REMOVAL - BUTT JOINT

PROP. RESURFACING ENDS
 STA 251+89
 SAW CUT FOR HMA SURFACE
 REMOVAL - BUTT JOINT

FOR PREF. PLASTIC PAVEMENT MARKING
 ON RAMP A, SEE SHT. 17.

FOR PREF. PLASTIC PAVEMENT MARKING
 ON RAMP B, SEE SHT'S. 17 & 18.



FILE NAME =	USER NAME = mcaordkr	DESIGNED -	REVISED -
at:\pwork\pwidot\mcaordkr\d8186975\sh	plan.dgn	DRAWN -	REVISED -
	PLOT SCALE = 100.0000' / IN.	CHECKED -	REVISED -
	PLOT DATE = 11/3/2010	DATE -	REVISED -

**STATE OF ILLINOIS
 DEPARTMENT OF TRANSPORTATION**

FAI 64 PLAN LAYOUT RAMPS A AND B			
SCALE:	SHEET NO. OF SHEETS	STA. TO STA.	

F.A.I. RTE.	SECTION	COUNTY	TOTAL SHEETS	SHEET NO.
64	197-21RS-2	WHITE	34	23
CONTRACT NO. 78211				
ILLINOIS FED. AID PROJECT				