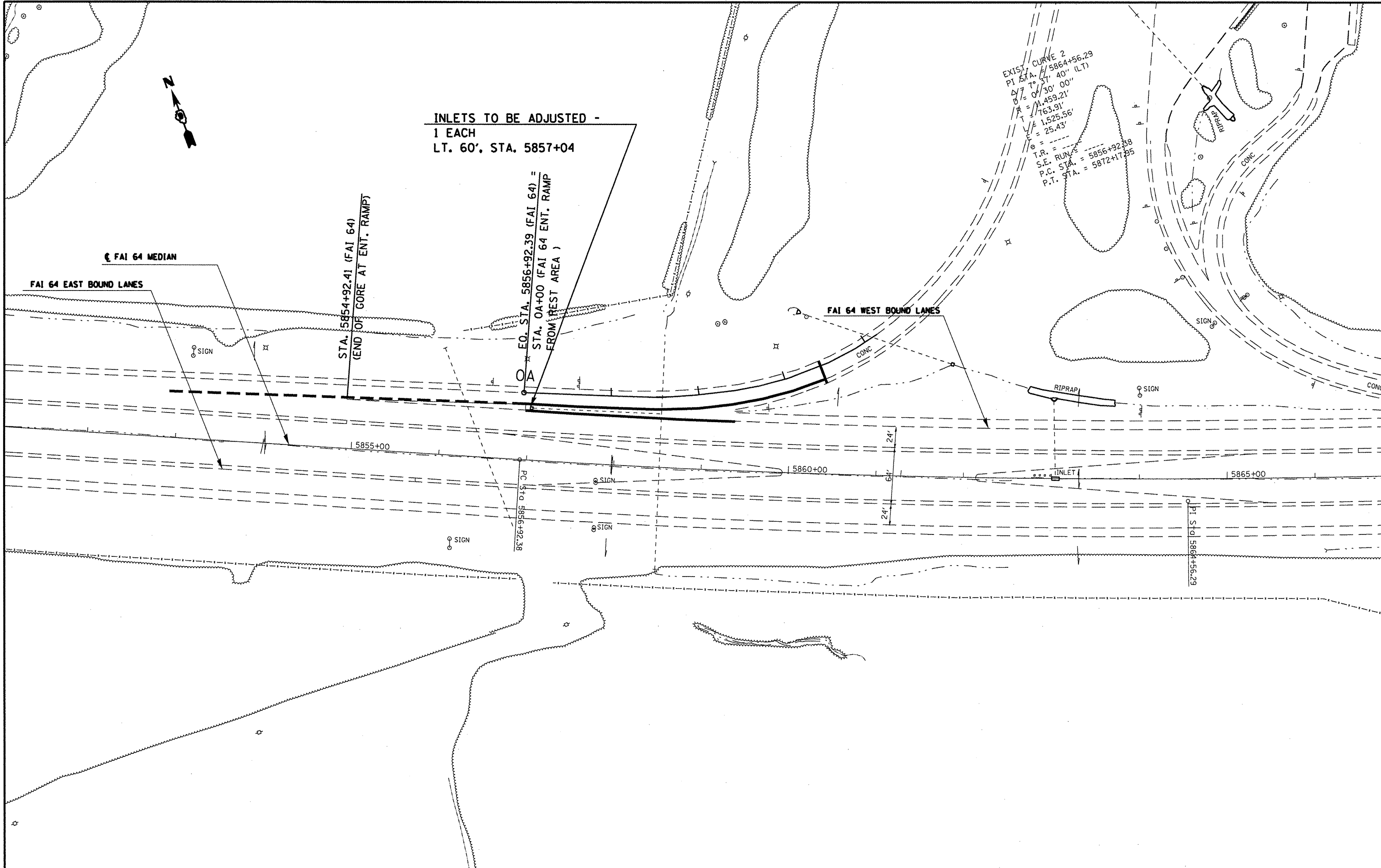




INLETS TO BE ADJUSTED -  
1 EACH  
LT. 60', STA. 5857+04

EXIST. CURVE 2  
PI STA. = 5864+56.29  
T = 70' 30" 00"  
D = 0' 30" 00"  
R = 1,459.21'  
E = 163.91'  
L = 1,525.56'  
E = 25.43'

T.R. =  
S.E. RUN = 5856+92.38  
P.C. STA. = 5872+17.35



FILE NAME =  
c:\pwork\pwork\mooordr\l2186975\7821-sht-misc.dgn

USER NAME = mooordr  
DESIGNED -  
DRAWN -  
PLOT SCALE = 100.0000' / IN.  
CHECKED -  
PLOT DATE = 11/3/2010

REVISOR  
REVISOR  
REVISOR  
REVISOR  
REVISOR  
REVISOR

STATE OF ILLINOIS  
DEPARTMENT OF TRANSPORTATION

SCALE: SHEET NO. OF SHEETS STA. TO STA.

FAI 64  
SECTION 097-2RS-2  
COUNTY WHITE  
TOTAL SHEETS 34  
SHEET NO. 27  
CONTRACT NO. 782U  
ILLINOIS FED. AID PROJECT