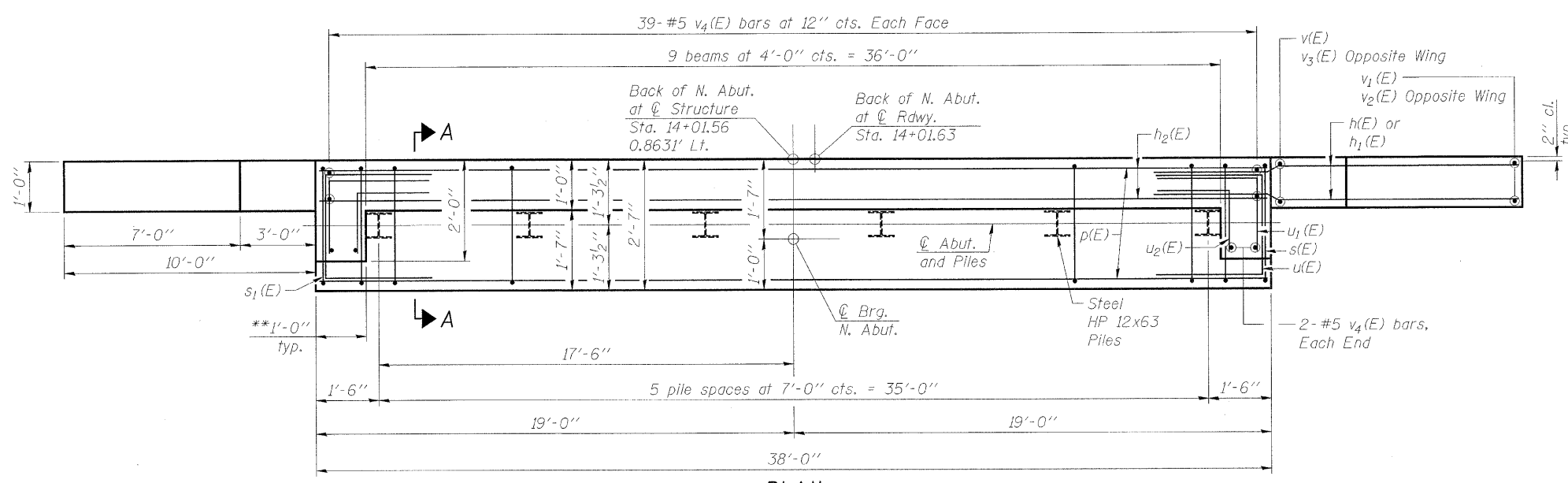
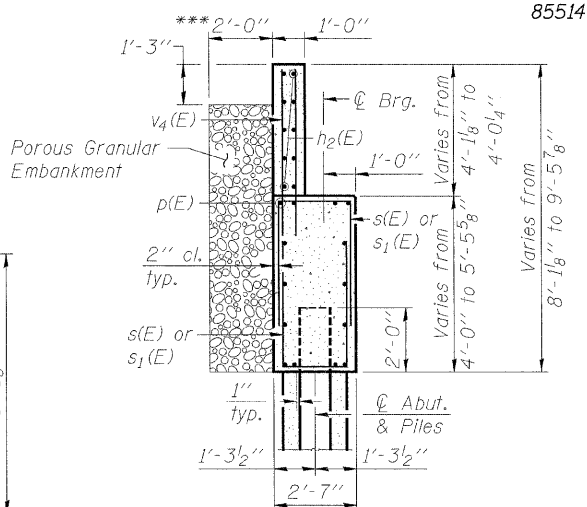


ELEVATION
(Looking North)



PLAN



SECTION A-A
BILL OF MATERIAL
(NORTH ABUTMENT ONLY)

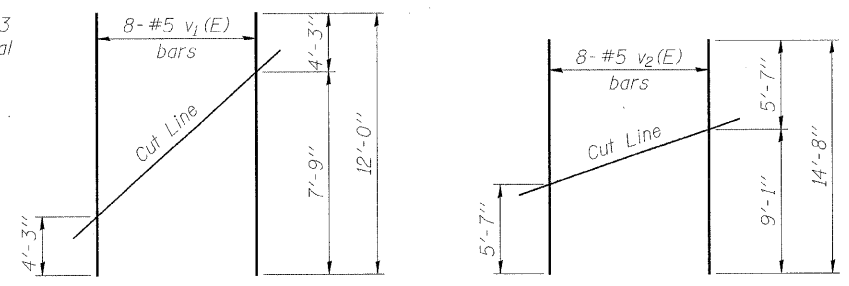
Bar	No.	Size	Length	Shape
h(E)	38	#6	13'-10"	—
h1(E)	28	#4	13'-9"	—
h2(E)	10	#5	37'-8"	—
p(E)	14	#6	37'-8"	—
s(E)	38	#4	9'-7"	⊓
s1(E)	40	#4	10'-1"	⊓
u(E)	10	#6	9'-10"	⊓
u1(E)	10	#5	3'-8"	⊓
u2(E)	10	#5	3'-0"	⊓
v(E)	6	#5	7'-9"	—
v1(E)	8	#5	12'-0"	—
v2(E)	8	#5	14'-8"	—
v3(E)	6	#5	9'-1"	—
v4(E)	82	#5	6'-0"	—
Porous Granular Embankment		Cu. Yd.	31	
Structure Excavation		Cu. Yd.	85	
Concrete Structures		Cu. Yd.	28.8	
Concrete Encasement		Cu. Yd.	2.1	
Reinforcement Bars, Epoxy Coated		Pound	4,250	
Furnishing Steel Piles HP 12x63		Foot	150	
Driving Piles		Foot	150	
Test Pile Steel HP 12x63		Each	1	

NOTES:

- * Top portion of wingwalls to be poured with the backwall after the deck beams have been installed and grout has cured for a minimum of 24 hours.
- ** May vary due to over run of beams.
- *** Pay limits of Porous Granular Embankment.
- For details of piles and concrete encasement, see Structural Sheet 10 of 12. Cast backwall after beams and concrete wearing surface have been erected. All exposed edges shall have standard 3/4" chamfers, except as noted. Space reinforcement in cap to miss dowel rods. See Section A-A.
- After beams have been erected, holes shall be drilled into substructure and anchor dowels placed. Dowel holes shall be filled with non-shrink grout to top of beam and allowed to cure a min. of 24 hours prior to grouting the shear keys.

PILE DATA

Type: Steel-HP 12x63
 Nominal Required Bearing: Drive to refusal
 Factored Resistance Available: ... 251
 Est. Length: 30'
 No. Production Piles: 5
 No. Test Piles: 1

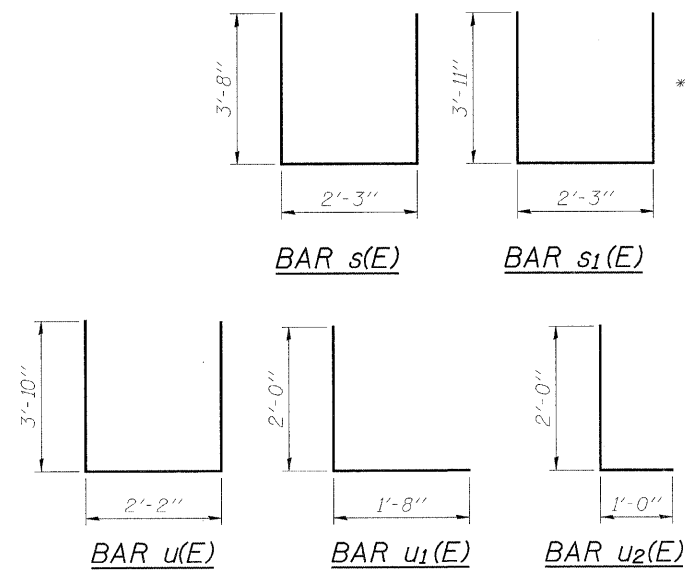


FIELD CUTTING DIAGRAM

Order v1(E) bars full length. Cut as shown and use remainder of bars in opposite face.

FIELD CUTTING DIAGRAM

Order v2(E) bars full length. Cut as shown and use remainder of bars in opposite face.



NORTH ABUTMENT
SCOUT CAMP ROAD OVER BR. OF APPLE RIVER
STATION 13+60 (S.N. 043-3276)
SECTION 09-00133-00-BR
JO DAVIESS COUNTY
 WHA # 1169D09

STRUCTURAL SHEET NO. 9 OF 12 SHEETS	ROUTE	SECTION	COUNTY	SHEETS	SHEET
	73	09-00133-00-BR	Jo Daviess	48	29
	FED. ROAD DIST. NO. 7	ILLINOIS	FED. AID PROJECT-		

FILE NAME = s:\PROJECTS\2007\1169D09\JO Daviess Co - Scout Camp Rd - DESIGN - STRUCT - 1169 N. Abutment.dgn