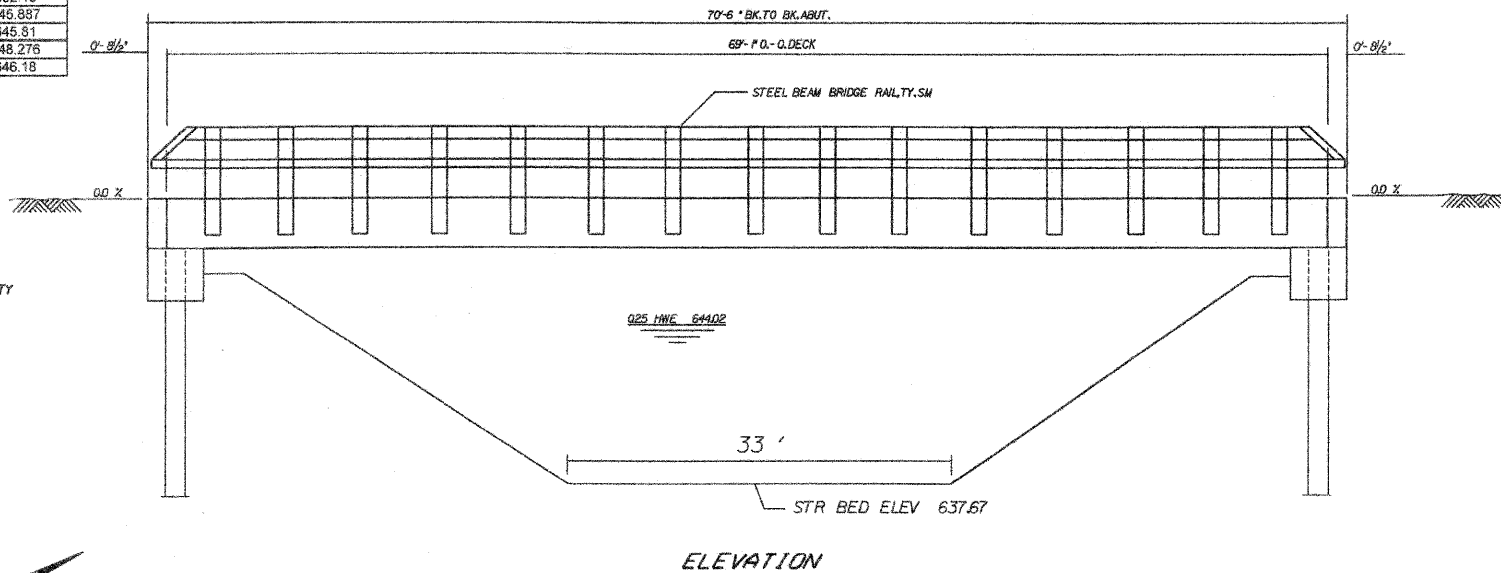


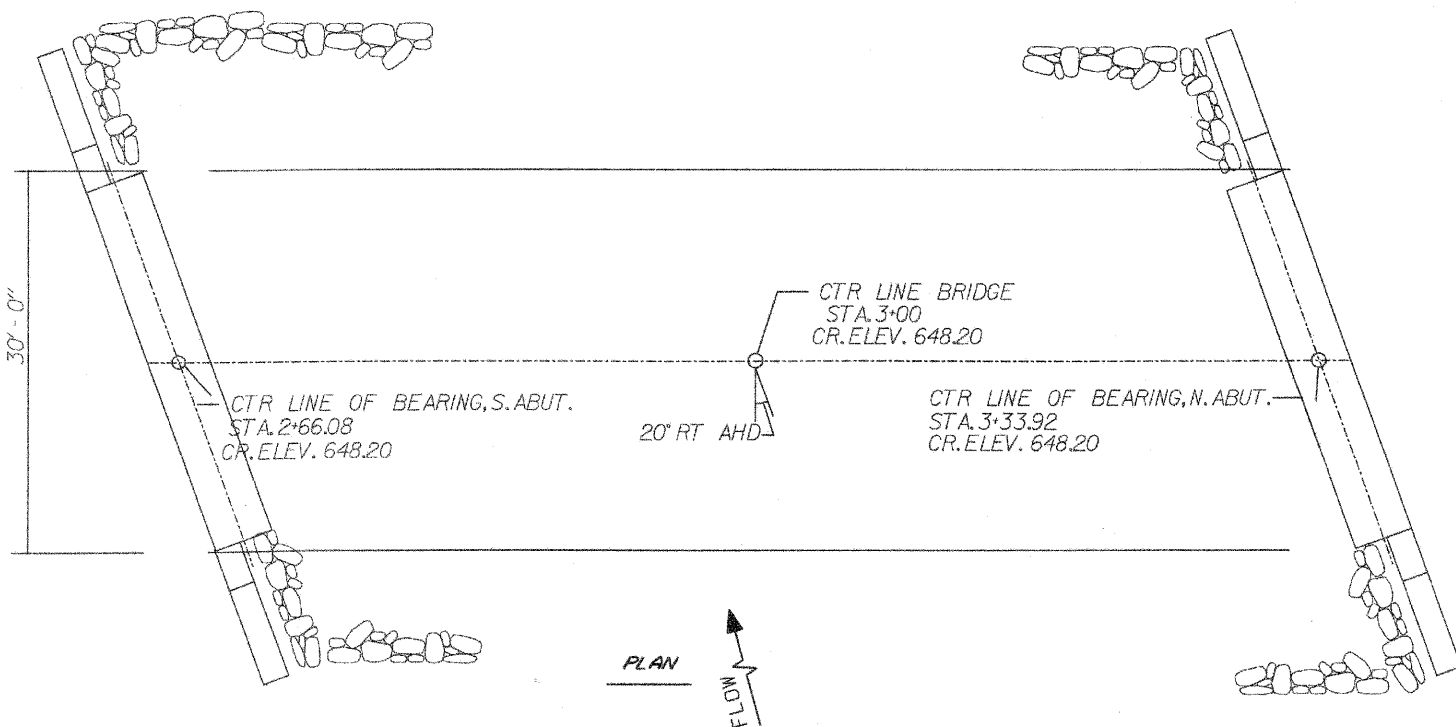
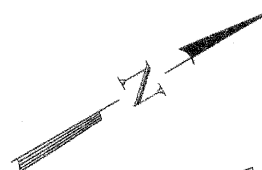
CONTROL POINTS			
10	1944329.375	2337144.138	652.15
11	1944922.545	2337448.012	646.887
12	1945010.923	2337494.505	645.81
13	1945189.369	2337584.244	648.276
14	1945466.296	2337720.516	646.18

EXIST. STRUCTURE  
008-4002 - TWO SPAN PRECAST PRESTRESSED  
CONCRETE DECK BEAM BRIDGE  
SUPPORTED ON TIMBER PILE AND  
CLOSED TIMBER BACKING

SALVAGE - ALL MATERIALS DEEMED SALVAGEABLE  
SHALL BECOME THE PROPERTY OF CARROLL COUNTY



ELEVATION



PLAN



WATERWAY INFORMATION

Drainage Area - 7.91 SQ. MI.		Low Grade Elev. 643.51 @ Sta. 8+50									
Flood	Freq. Yr.	Q C.F.S.	Opening Sq. Ft.		Natural H.W.E.		Head - Ft.		Headwater El.		
			Exist.	Prop.	Exist.	Prop.	Exist.	Prop.	Exist.	Prop.	
Design	25	1710	187	228	644.27	643.08	0.68	0.50	644.95	643.58	
Base	100	2440	208	250	644.63	643.49	0.74	0.96	645.37	644.45	
Overlapping											
Max. Calc.	500	3370	231	277	644.95	643.97	0.83	1.29	645.78	645.26	

GENERAL NOTES

SEE SPECIAL PROVISIONS FOR BORING LOGS  
NO BACKFILL MAY BE PLACED BEHIND ABUTMENTS UNTIL DECK BEAMS ARE IN PLACE AND THE DOWELS ARE GROUTED.  
THE CONTRACTOR SHALL DRIVE ONE TEST PILE IN THE NORTH ABUTMENT AT A PERMANENT LOCATION AS DIRECTED BY THE ENGINEER BEFORE ORDERING THE REMAINDER OF PILES.  
REINFORCEMENT BARS SHALL CONFORM TO THE REQUIREMENTS OF AASHTO M 31 M 42 OR M 53 GRADE 60.  
ALL REINFORCEMENT BARS SHALL BE EPOXY COATED  
LAYOUT OF SLOPE PROTECTION SYSTEM MAY BE VARIED IN THE FIELD TO SUIT GROUND CONDITIONS AS DIRECTED BY THE ENGINEER.  
ALL EXPOSED STEEL PILING SHALL BE PAINTED IN ACCORDANCE WITH APPLICABLE PORTIONS OF SECTION 506 OF THE STANDARD SPECIFICATIONS AND THE SPECIAL PROVISIONS

TOTAL BILL OF MATERIAL

ITEM	UNIT	SUPER	SUB	TOTAL
Concrete Structures	Cu. Yd.		27.7	27.7
Reinforcement Bars, Epoxy Ctd.	Pound		3,600	3,600
Precast Conc. Br. Slab, 27" dp	Sq. Ft.	2,073		2,073
Steel Railing, Type SM	Foot	142		142
Furnishing Steel Piles HPI0x42	Foot		468	468
Driving Pile	Foot		468	468
Test Pile Steel HPI0x42	Each		2	2
Removal of Existing Structures	Each			1
Name Plates	Each		1	1
Pile Shoes	Each		10	10
Stone Dumped Riprap, Class A5	Sq. Yd.		292	292
Filter Fabric	Sq. Yd.		292	292
Protective Coat	Sq. Yd.	265		265

HIGHWAY CLASSIFICATION

Co. Hwy. #11  
Functional Class: Local Road  
ADT: 275 - 2010 350 - 2030

LOADING HL 93

Allowed 50#/sq.ft. for future wearing surface.

DESIGN SPECIFICATIONS

2007 AASHTO

SAND CREEK  
BUILT 2011 BY  
CARROLL COUNTY  
STATION 3+00  
LOADING HS:20  
STR. NO. 008-4014

LETTERING NAME PLATE

See Std. 515001

I CERTIFY THAT TO THE BEST OF MY KNOWLEDGE, INFORMATION AND BELIEF, THAT THIS BRIDGE DESIGN IS STRUCTURALLY ADEQUATE FOR THE DESIGN LOADING SHOWN ON THE PLANS. THE DESIGN IS AN ECONOMICAL ONE FOR THE STYLE OF THE STRUCTURE AND COMPLIES WITH THE REQUIREMENTS OF THE CURRENT AASHTO STANDARD SPECIFICATIONS FOR HIGHWAY BRIDGES.

*[Signature]* 12-2-2011



DESIGN STRESSES

PRECAST UNITS  
 $f'_c = 4,500$  psi  
 $f'_s = 20,000$  psi, reinforcement  
 $f_c = 1,800$  psi

FIELD UNITS  
 $f'_c = 3,500$  psi  
 $f'_y = 60,000$  psi, reinforcement

REVISIONS	
NAME	DATE
K.V.	03/15/2010
K.V.	
K.V.	

CARROLL COUNTY HIGHWAY DEPARTMENT

SECTION 09--00088--00--BR  
GENERAL PLAN & ELEVATION

DRAWN BY: KV  
CHECKED BY: