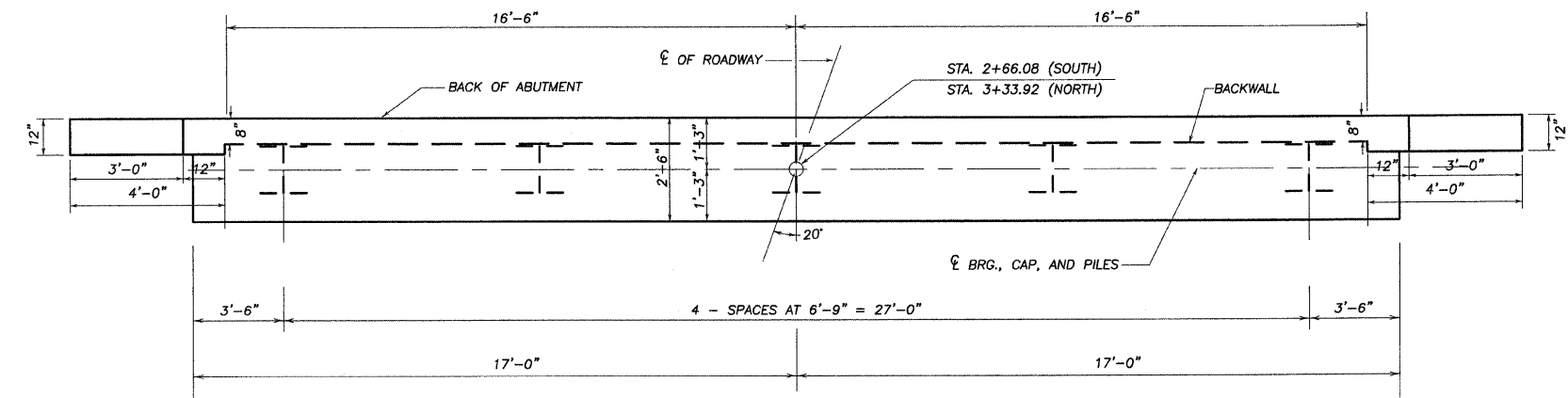
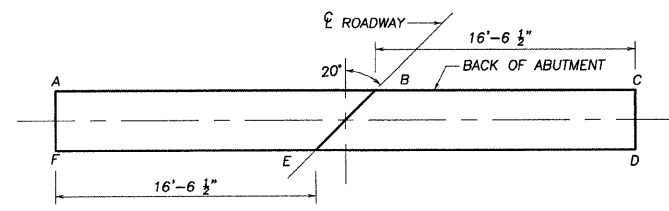


ELEVATION

* FOR CAP ELEVATIONS SEE TABLE BELOW

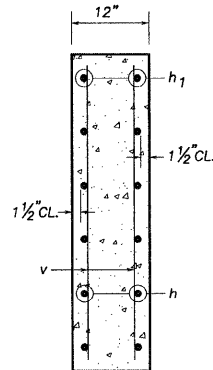


PLAN



LOCATION	ELEV.	A	B	C	D	E	F
WEST ABUT.		645.65	645.91	645.67	645.65	645.91	645.67
EAST ABUT.		645.65	645.91	645.67	645.65	645.91	645.67

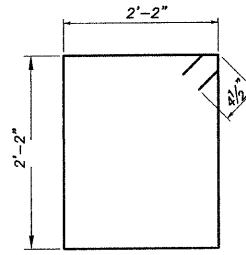
ELEVATION TOP OF ABUTMENTS



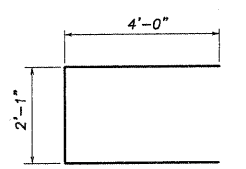
SECTION THRU WINGWALL

PILE DATA INFORMATION

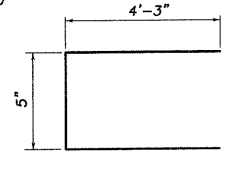
TYPE AND SIZE: STEEL HP 10X42
 NOMINAL REQUIRED BEARING: 334 KIPS
 ALLOWABLE RESISTANCE AVAILABLE: 76 KIPS
 NO. REQUIRED : 8+2 TEST PILES (1 EA. ABUT.)
 EST. LENGTH: 59' NORTH ABUT. (TO REFUSAL)
 60' SOUTH ABUT. (TO REFUSAL)
 THE STEEL H PILES SHALL BE ACCORDING TO AASHTO M270 GRADE 50
 THE TEST PILES SHALL BE DRIVEN TO 110 PERCENT OF THE NOMINAL REQUIRED BEARING INDICATED IN THE PILE DATA INFORMATION.



BAR s

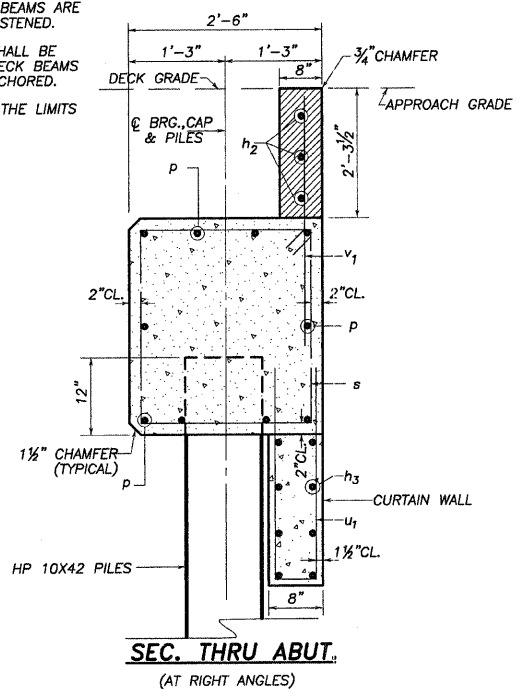


BAR u



BAR v

NOTE: WINGWALLS ABOVE TOP OF CAP SHALL NOT BE POURED UNTIL THE DECK BEAMS ARE IN PLACE AND FASTENED.
 HATCHED AREA SHALL BE POURED AFTER DECK BEAMS ARE SET AND ANCHORED.
 WIDTH SHALL BE THE LIMITS OF THE CAP.



SEC. THRU ABUT. (AT RIGHT ANGLES)

BILL OF MATERIAL 2 ABUTMENTS

BAR	NO.	SIZE	LENGTH	SHAPE
h	40	#4	5'-0"	
h ₁	24	#4	3'-8"	
h ₂	6	#4	32'-8"	
h ₃	16	#4	33'-8"	
p	20	#7	33'-8"	
s	68	#4	9'-5"	
u	16	#6	10'-1"	
u ₁	68	#5	8'-11"	
v	32	#4	4'-6"	
v ₁	66	#4	4'-0"	
CONCRETE STRUCTURES			CU. YD.	27.7
REINFORCEMENT BARS			POUND	3600
FURNISHING STEEL PILES			FOOT	468
DRIVING PILES			FOOT	468
TEST PILE - STEEL HP 10X42			EACH	2

SCALE: 1"=

REVISIONS

NO.	DATE	DESCRIPTION

DESIGNED BY: RLR
 DRAWN BY: RLR
 CHECKED BY: SUBSTR
 SURVEYED BY: RLR
 BOOK NO: 194-00088

wendler
 GROUND-BREAKING SOLUTIONS
 engineers - surveyors - scientists
 www.wendlergs.com ph: 815.286.2281
 Illinois Professional Geospatial Firm No. 194-00088

ABUTMENT DETAILS OF OIL VALLEY SCHOOL ROAD BRIDGE FOR CARROLL COUNTY HIGHWAY

SHEET TITLE
ABUTMENT DETAILS

JOB NUMBER
 2100119

DATE
 11/04/2010

SHEET NO.

8 of 10

SN 008-4014
 SUBSTRUCTURE-ABUTMENTS
 SECTION 09-00088-00-BR
 CARROLL COUNTY