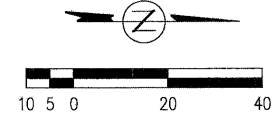


RTE.	SECTION	COUNTY	TOTAL SHEETS	SHEET NO.
N 5TH ST	03-00289-00-BR	ADAMS	90	12
STA.	40+00.00	TO STA.	45+00.00	

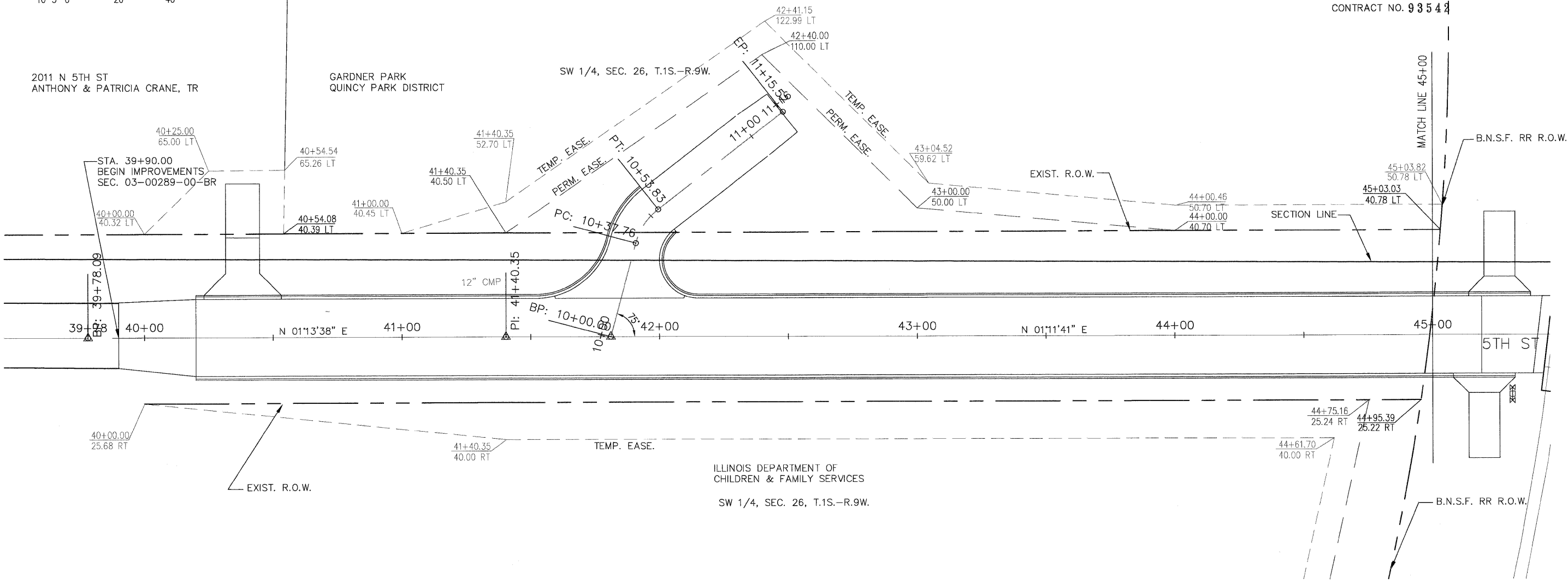
CONTRACT NO. 93544



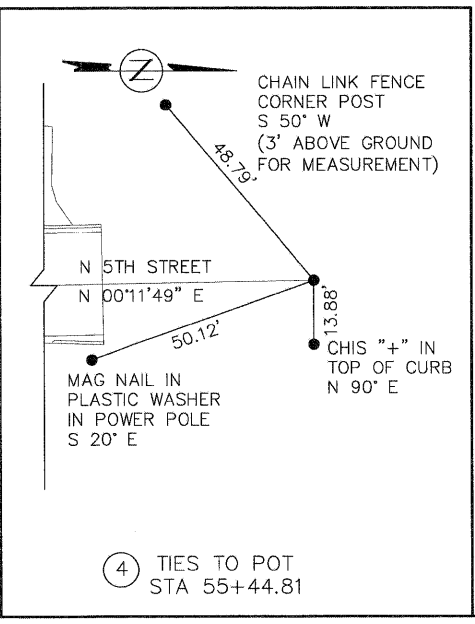
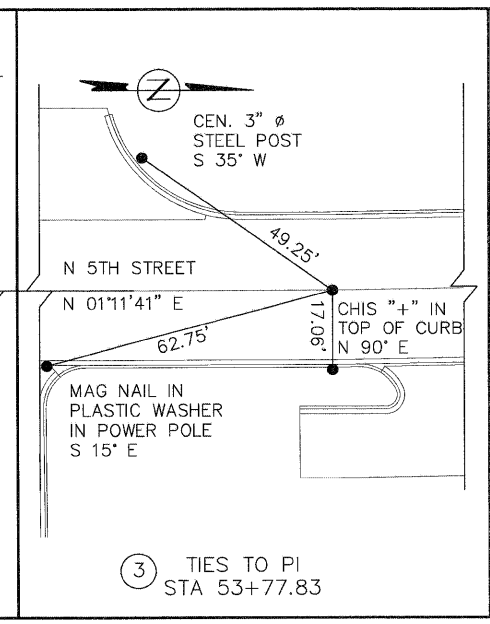
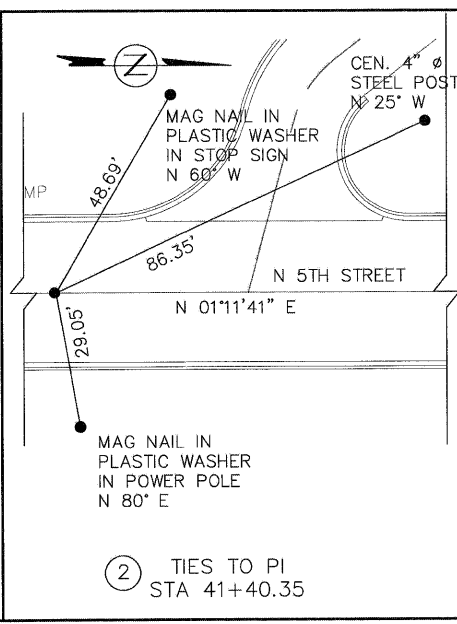
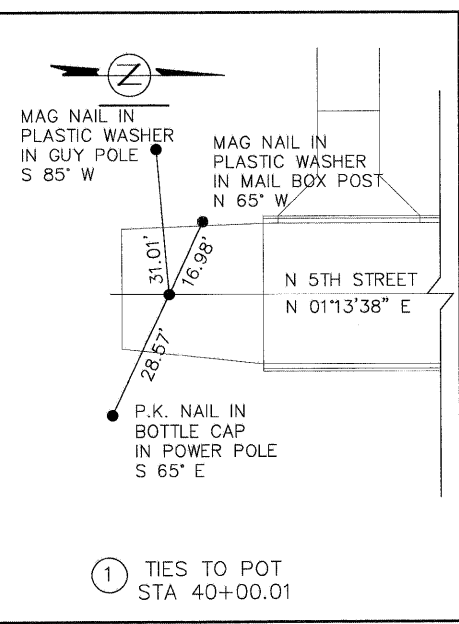
2011 N 5TH ST
ANTHONY & PATRICIA CRANE, TR

GARDNER PARK
QUINCY PARK DISTRICT

SW 1/4, SEC. 26, T.1S.-R.9W.



ILLINOIS DEPARTMENT OF
CHILDREN & FAMILY SERVICES
SW 1/4, SEC. 26, T.1S.-R.9W.



- BM 1 - EXISTING USGS MONUMENT Y-15, BRASS PLATE SET IN CONCRETE STA 45+17.0, 49.0 LT, ELEV 550.89
- BM 2 - EXISTING ADAMS COUNTY GIS MONUMENT, BRASS PLATE STA 60+78.87, 9.0 LT, ELEV 566.67

PSBA
POEPPING, STONE, BACH & ASSOCIATES, INC.
ARCHITECTS ENGINEERS PLANNERS SURVEYORS
100 S 54TH ST, P.O. BOX 709 • QUINCY, IL 62306
WITH OFFICES IN IKEOKUK, IOWA & HANNIBAL, MISSOURI
www.psba.com • PHONE 877-223-4605

REVISIONS	
NAME	DATE

CITY OF QUINCY, ILLINOIS
N. 5TH STREET BRIDGE
ALIGNMENT, TIES & BENCHMARKS
SHEET 1 OF 3
SCALE: VERT. _____
HORIZ. _____
DATE _____ DRAWN BY: DBS
CHECKED BY: AMW
5th ST - ALIGNMENT PLAN - 1 OF 3