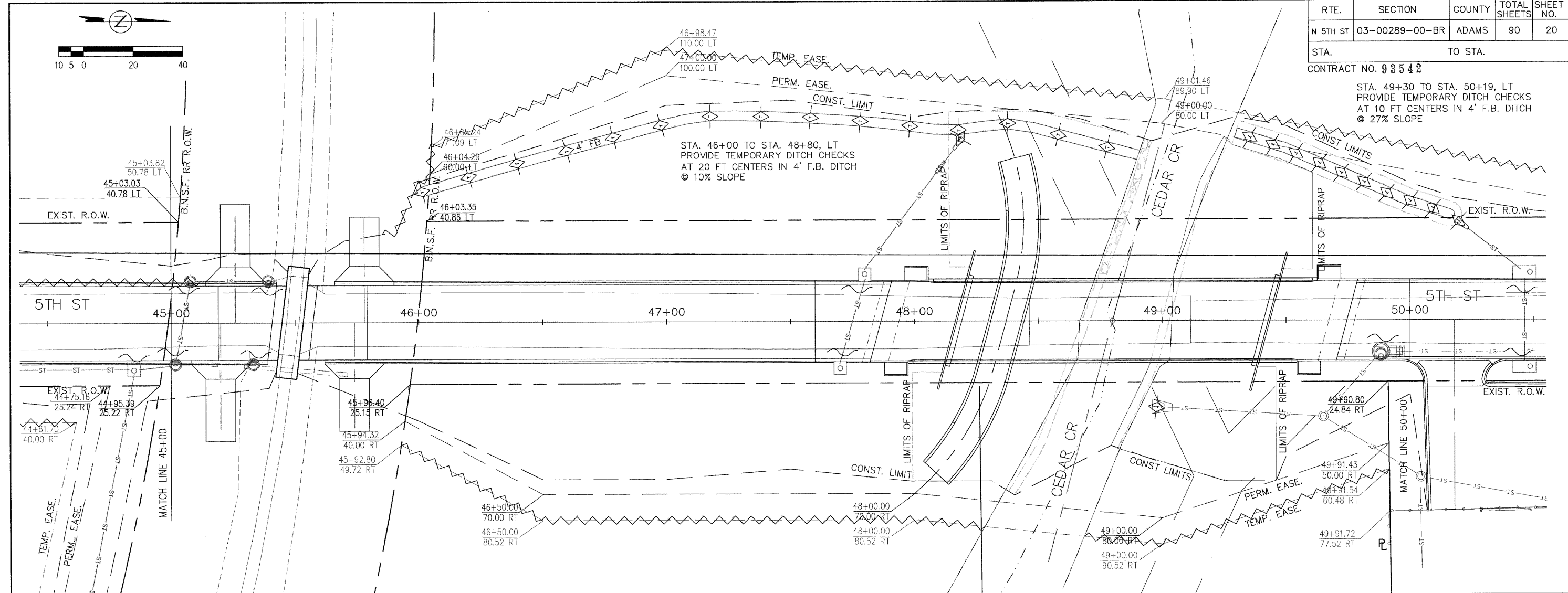
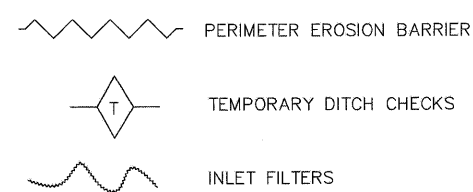


RTE.	SECTION	COUNTY	TOTAL SHEETS	SHEET NO.
N 5TH ST	03-00289-00-BR	ADAMS	90	20
STA. _____ TO STA. _____				

CONTRACT NO. 93542  
 STA. 49+30 TO STA. 50+19, LT  
 PROVIDE TEMPORARY DITCH CHECKS  
 AT 10 FT CENTERS IN 4' F.B. DITCH  
 @ 27% SLOPE



STA. 46+00 TO STA. 48+80, LT  
 PROVIDE TEMPORARY DITCH CHECKS  
 AT 20 FT CENTERS IN 4' F.B. DITCH  
 @ 10% SLOPE



1. ALL DISTURBED AREAS ARE TO RECEIVE TEMPORARY SEEDING AND MULCH, METHOD 1.
2. SEE STANDARD 280001-05 TEMPORARY EROSION CONTROL SYSTEMS
3. SEE SPECIAL PROVISIONS FOR STORMWATER POLLUTION PREVENTION PLAN (BDE 2342)

**PSBA**  
 POEPPING, STONE, BACH & ASSOCIATES, INC.  
 ARCHITECTS ENGINEERS PLANNERS SURVEYORS  
 100 S 54TH ST, P.O. BOX 709 • QUINCY, IL 62306  
 WITH OFFICES IN IKEOKUK, IOWA & HANNIBAL, MISSOURI  
 www.psba.com • PHONE 877-223-4605

REVISIONS	
NAME	DATE

CITY OF QUINCY, ILLINOIS  
 N. 5TH STREET BRIDGE  
 EROSION & SEDIMENT CONTROL  
 SHEET 2 OF 4

SCALE: VERT. \_\_\_\_\_  
 HORIZ. \_\_\_\_\_  
 DATE \_\_\_\_\_

DRAWN BY: DBS  
 CHECKED BY: AMW