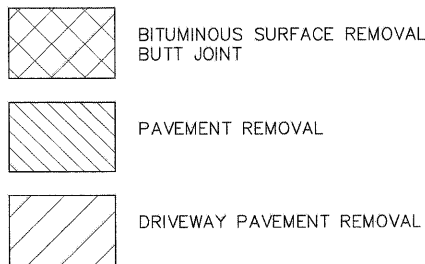
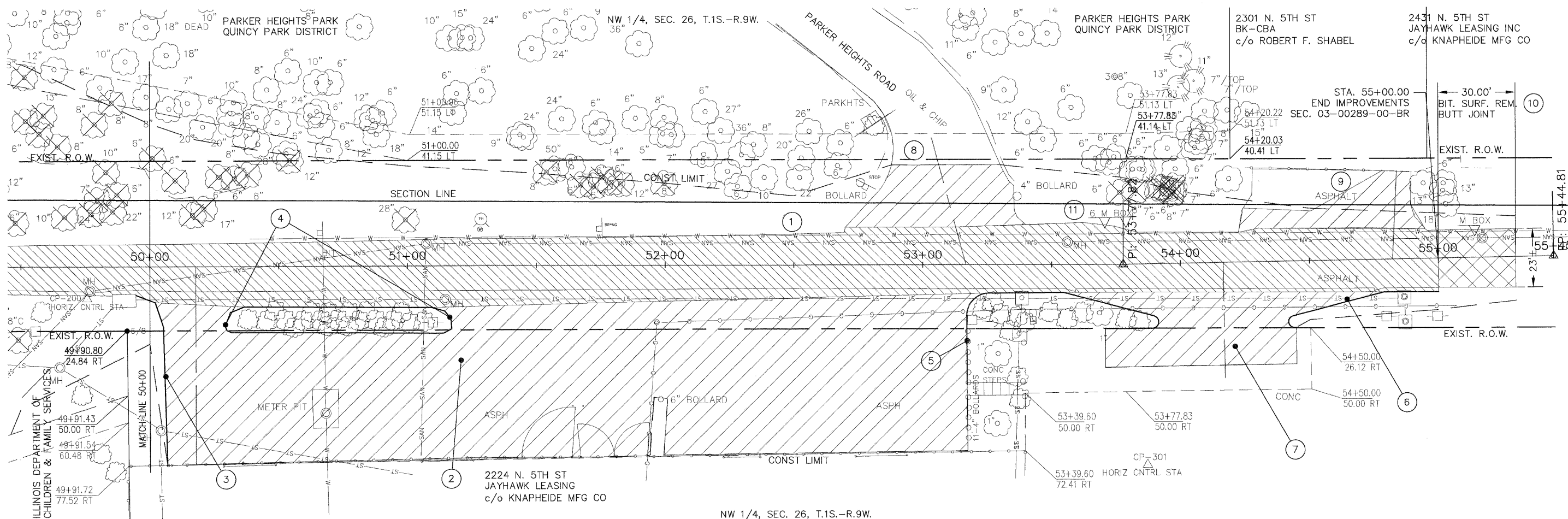


RTE.	SECTION	COUNTY	TOTAL SHEETS	SHEET NO.
N 5TH ST	03-00289-00-BR	ADAMS	90	25
STA.	50+00.00	TO STA.	55+00.00	
CONTRACT NO. 93542				



- ① STA. 50+00.0 - 55+00.0 5TH STREET
1,402.7 SY - PAVEMENT REMOVAL (ASPHALT)
- ② STA. 50+02.0, 13.0' RT - 53+25.7, 11.1' RT
1,985.0 SY - DRIVEWAY PAVT REMOVAL (ASPH)
- ③ STA. 49+94.6, 11.1' RT - 50+06.8, 77.3' RT
72 FT - CONC CC&G REMOVAL
- ④ STA. 50+36.5, 15.6' RT - 51+09.4, 16.1' RT
187 FT - CONC CC&G REMOVAL
(INCLUDES LANDSCAPE ISLAND)
- ⑤ STA. 53+17.2, 46.0' RT - 53+91.1, 23.0' RT
130 FT - CONC CC&G REMOVAL

- ⑥ STA. 54+41.6, 23.7' RT - 55+00.0, 12.8' RT
65 FT - CONC CC&G REMOVAL
- ⑦ STA. 53+54.4, 11.4' RT - 54+78.7, 13.2' RT
238 SY - DRIVEWAY PAVT REMOVAL (CONC)
- ⑧ STA. 10+15.3 - 10+40.4 PARKER HEIGHT RD
147 SY - PAVEMENT REMOVAL (SEAL COAT)
- ⑨ STA. 54+27.2, 11.7' LT - 54+95.2, 11.5' LT
98 SY - DRIVEWAY PAVT REMOVAL (ASPH)
- ⑩ STA. 55+00.0 TO 55+30.0
76.7 SY - BIT. SURF. REM. - BUTT JOINT
- ⑪ STA. 53+74.5, 19' LT
RELOCATE 6 MAILBOXES

PSBA
 POEPPING, STONE, BACH & ASSOCIATES, INC.
 ARCHITECTS ENGINEERS PLANNERS SURVEYORS
 100 S 54TH ST. P.O. BOX 709 • QUINCY, IL 62306
 WITH OFFICES IN IKEOKUK, IOWA & HANNIBAL, MISSOURI
 www.psba.com • PHONE 877-223-4605

REVISIONS	
NAME	DATE

CITY OF QUINCY, ILLINOIS
 N. 5TH STREET BRIDGE
 REMOVAL OF IMPROVEMENTS
 SHEET 3 OF 3

SCALE: VERT. _____
 DATE _____

DRAWN BY: DBS
 CHECKED BY: AMW