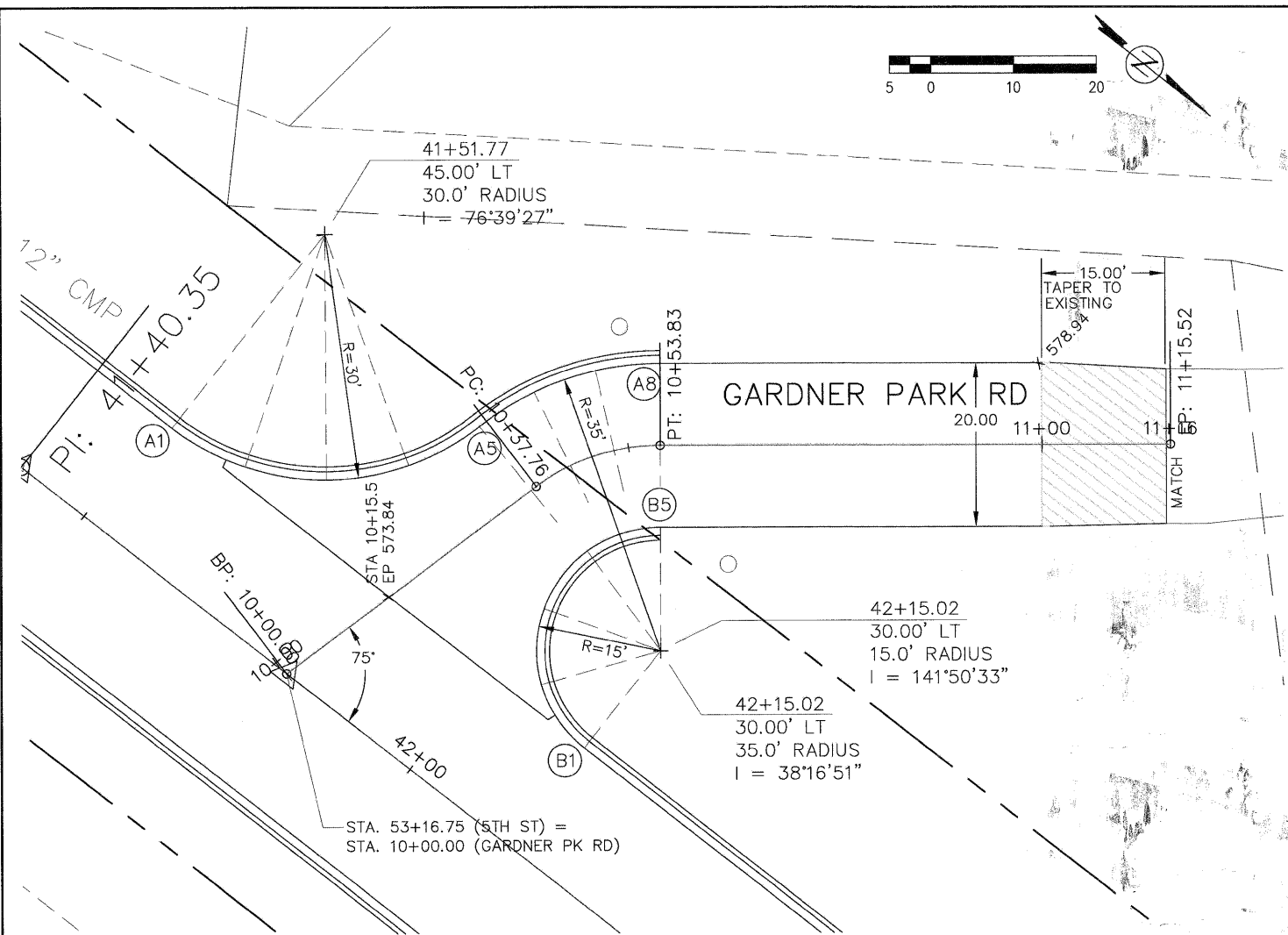


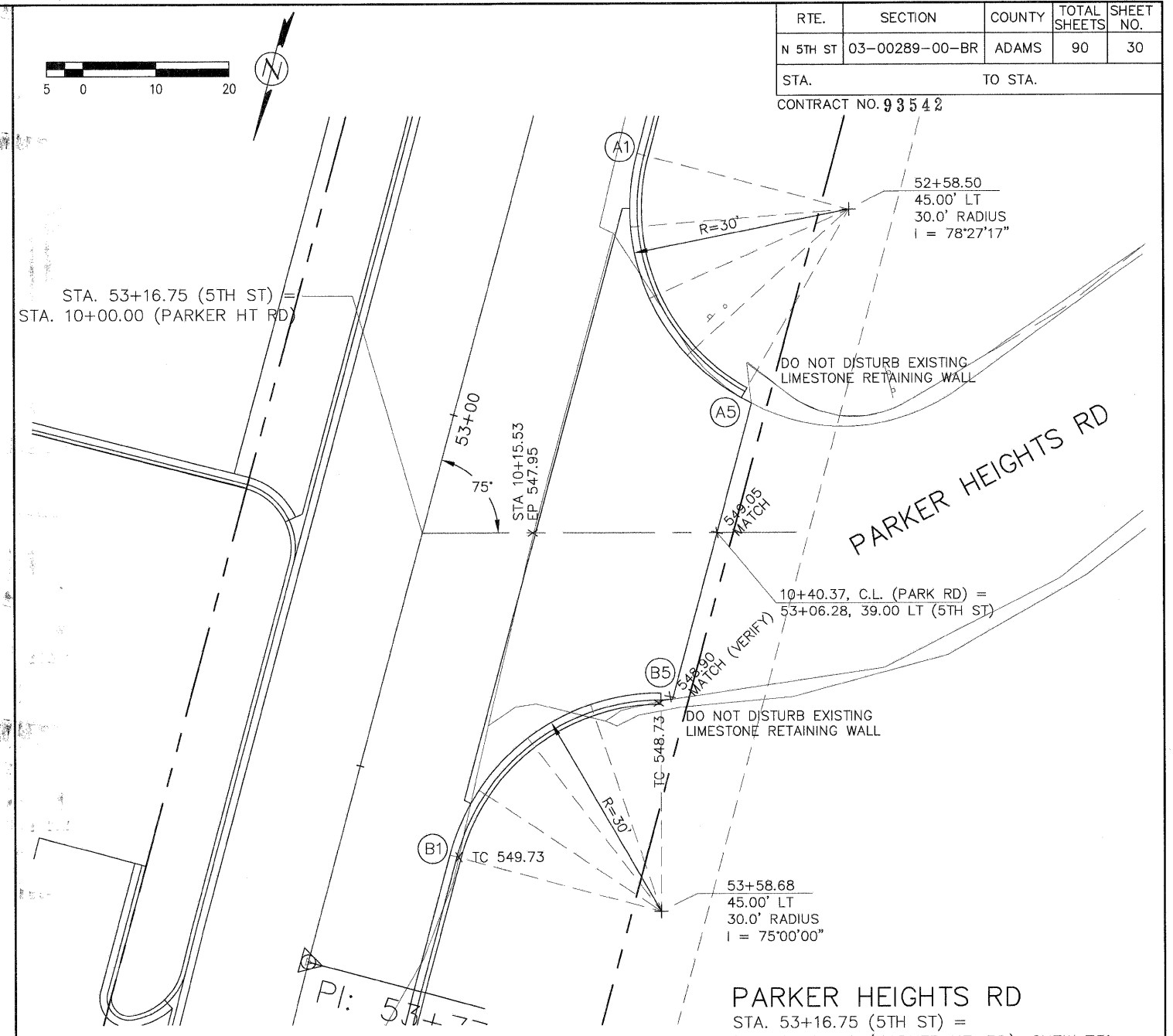
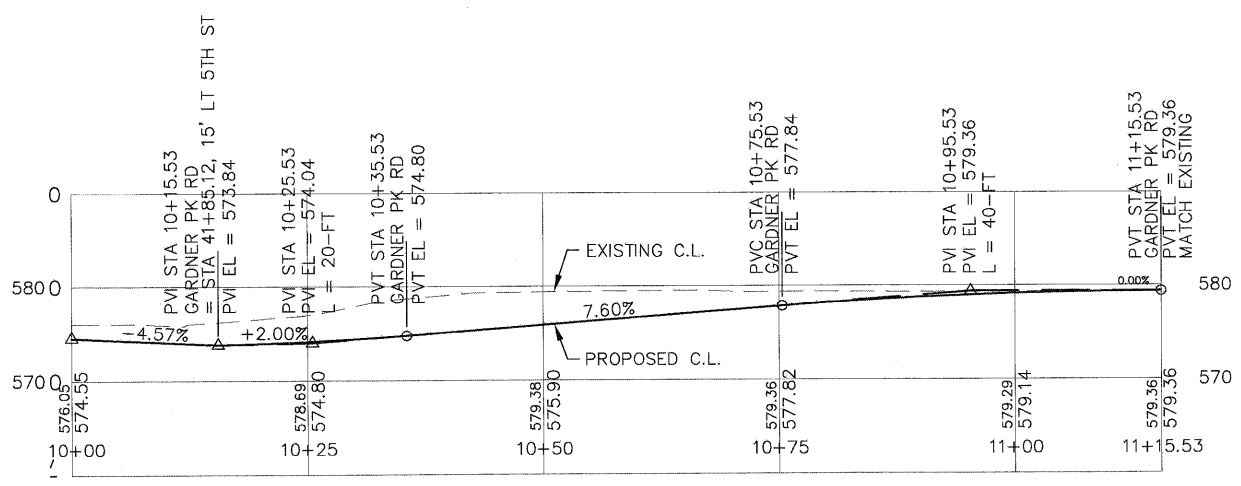
RTE.	SECTION	COUNTY	TOTAL SHEETS	SHEET NO.
N 5TH ST	03-00289-00-BR	ADAMS	90	30
STA. _____ TO STA. _____				

CONTRACT NO. 93542



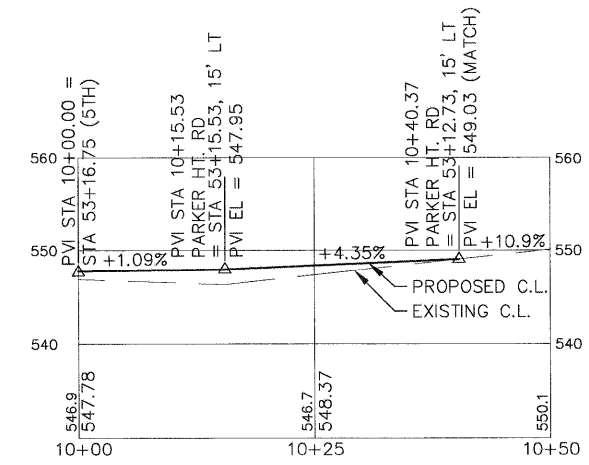
A1 41+51.77 15.00 LT 577.01	A6 41+83.55 45.32 LT 575.54	B1 42+15.02 15.00 LT 570.62
A2 41+61.63 16.66 LT 575.82	A7 41+87.91 52.14 LT 575.73	B2 42+06.32 17.87 LT 571.72
A3 41+70.38 21.47 LT 574.89	A8 41+93.11 57.02 LT 575.99 =	B3 42+00.85 25.10 LT 573.14
A4 41+77.08 28.99 LT 574.75	10+53.83 10.00 LT (PARK RD)	B4 42+00.63 34.23 LT 574.56
A5 41+80.62 37.77 LT 575.36		B5 42+05.76 41.80 LT 575.99 =
		10+53.83 10.00 RT (PARK RD)

GARDNER PARK RD
 STA. 41+81.10 (5TH ST) =
 STA. 10+00.00 (GARDNER PK RD), SKEW 75°



A1 52+58.49 15.00 LT 544.35	B1 53+58.67 15.00 LT 549.21
A2 52+68.56 16.74 LT 545.29	B2 53+49.02 16.59 LT 549.29
A3 52+77.46 21.76 LT 546.38	B3 53+40.33 21.58 LT 549.13
A4 52+83.74 28.81 LT 547.46	B4 53+33.72 28.33 LT 548.96
A5 52+87.52 37.46 LT 548.55 MATCH (VERIFY)	B5 53+29.69 37.24 LT 548.80 MATCH (VERIFY)

PARKER HEIGHTS RD
 STA. 53+16.75 (5TH ST) =
 STA. 10+00.00 (PARKER HT. RD), SKEW 75°



REVISIONS	
NAME	DATE

CITY OF QUINCY, ILLINOIS
 N. 5TH STREET BRIDGE
 INTERSECTION GEOMETRICS
 SCALE: VERT. _____
 DATE _____ HORIZ. _____
 DRAWN BY: DBS
 CHECKED BY: AMW