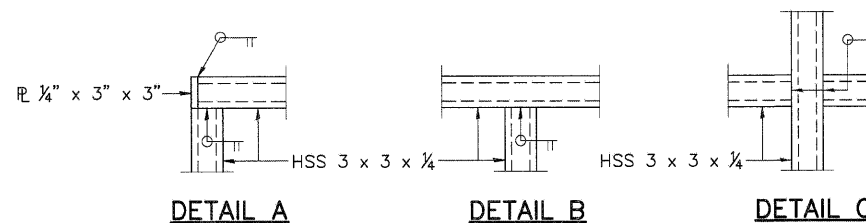


RTE.	SECTION	COUNTY	TOTAL SHEETS	SHEET NO.
N 5TH ST	03-00289-00-BR	ADAMS	90	50

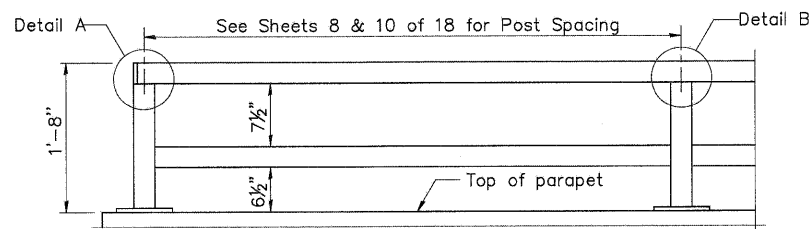
BICYCLE RAILING

CONTRACT NO. 93542

SHEET 12 OF 18

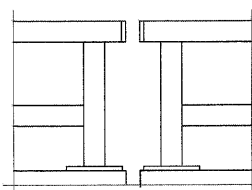


All steel rail elements shall be galvanized according to Article 509.05 of the Standard Specifications.

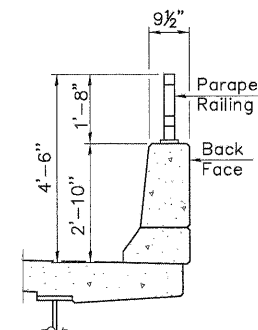


**PARAPET RAILING ELEVATION**

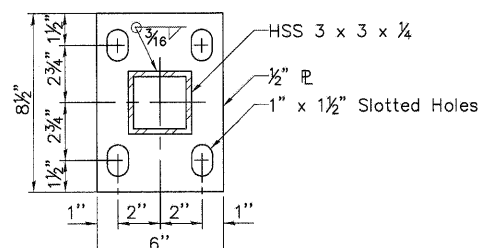
(Inside Face of Two Element Rail)



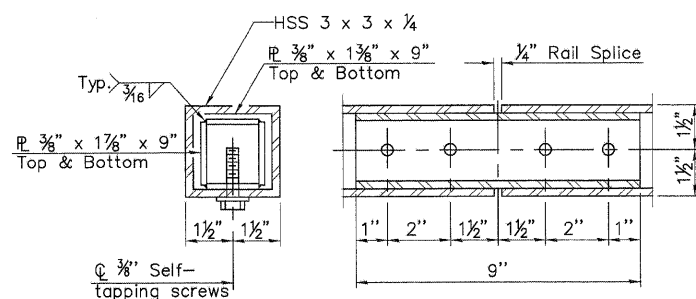
**PARAPET RAILING ELEVATION AT EXPANSION JOINT**



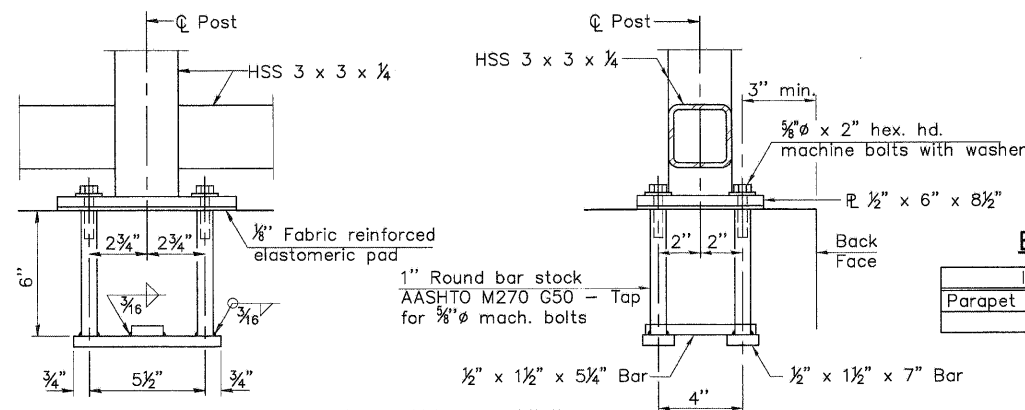
**SECTION THRU DECK**



**BASE PLATE**



**RAIL SPLICE**



**ANCHOR BOLT DETAILS**

In lieu of the cast-in-place anchor device shown, the Contractor has the option of drilling and setting 5/8" anchor rods according to Article 509.06 of the Standard Specifications. Embedment shall be according to the manufacturer's specifications.

**BILL OF MATERIAL**

Item	Unit	Quantity
Parapet Railing	Foot	296

**BICYCLE RAILING STRUCTURE NO. 001-6012**

DESIGNED	D.S.P.
CHECKED	C.S.B.
DRAWN	D.S.P.
CHECKED	C.S.B.

EXAMINED	20	ENGINEER OF BRIDGE DESIGN
PASSED		ENGINEER OF BRIDGES AND STRUCTURES

R-29

11-1-09 (10'-0" Maximum Post Spacing)

**PSBA**  
POEPPING, STONE, BACH & ASSOCIATES, INC.  
ARCHITECTS ENGINEERS PLANNERS SURVEYORS  
100 S 84TH ST, P.O. BOX 709 • QUINCY, IL 62306  
WITH OFFICES IN IKEOKUK, IOWA & HANNIBAL, MISSOURI  
www.psba.com • PHONE 877-223-4605

REVISIONS	
NAME	DATE

CITY OF QUINCY, ILLINOIS	
N. 5TH STREET BRIDGE	
BICYCLE RAILING	
SCALE: VERT. DATE	HORIZ. DATE
DRAWN BY: DSP	CHECKED BY: CSE