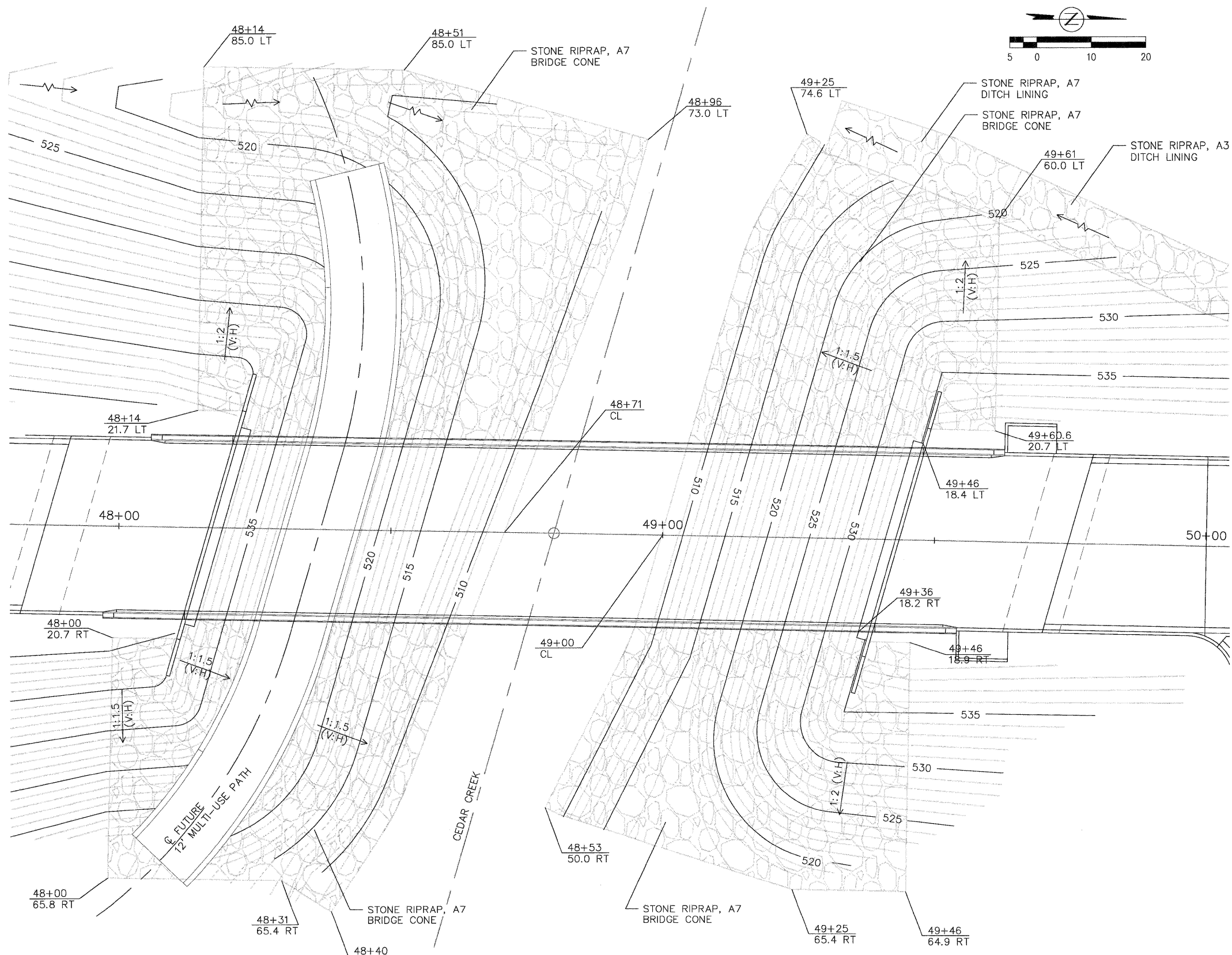


RTE.	SECTION	COUNTY	TOTAL SHEETS	SHEET NO.
N 5TH ST	03-00289-00-BR	ADAMS	90	59
BRIDGE CONE RIPRAP LAYOUT DETAILS				
CONTRACT NO. 93542				



STONE RIPRAP, CLASS A7

STA 48+00 TO STA 48+71
INSTALL 30" THICK, AREA = 1082 SQ YD

STA 49+00 TO 49+61
INSTALL 30" THICK, AREA = 745 SQ YD

PSBA
 POEPPING, STONE, BACH & ASSOCIATES, INC.
 ARCHITECTS ENGINEERS PLANNERS SURVEYORS
 100 S 64TH ST, P.O. BOX 708 • QUINCY, IL 62306
 WITH OFFICES IN KECKUK, IOWA & HANNIBAL, MISSOURI
 www.psba.com • PHONE 877-223-4605

REVISIONS	
NAME	DATE

CITY OF QUINCY, ILLINOIS

N. 5TH STREET BRIDGE
 MISC. DETAIL
 BRIDGE CONE RIPRAP LAYOUT

SCALE: VERT. _____
 HORIZ. _____

DATE _____ DRAWN BY: DBS
 CHECKED BY: AMW

5th ST - MISCELLANEOUS DETAIL 3 OF 6