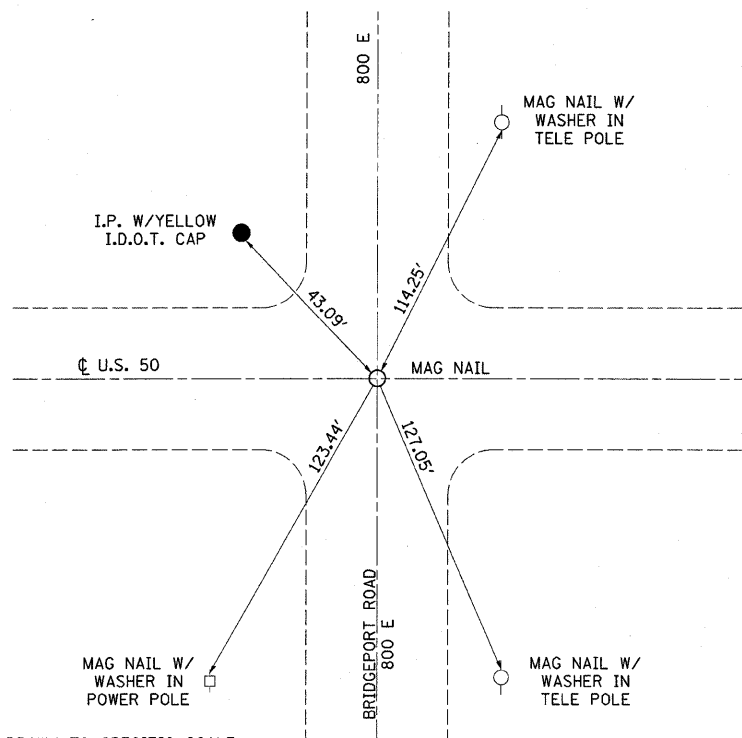
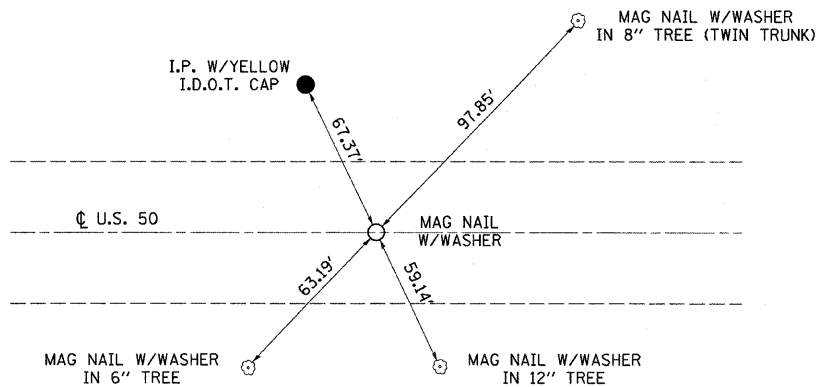


P.I. STA. 13+42.66
 C U.S. 50 P.O.T STA. 357+00.50



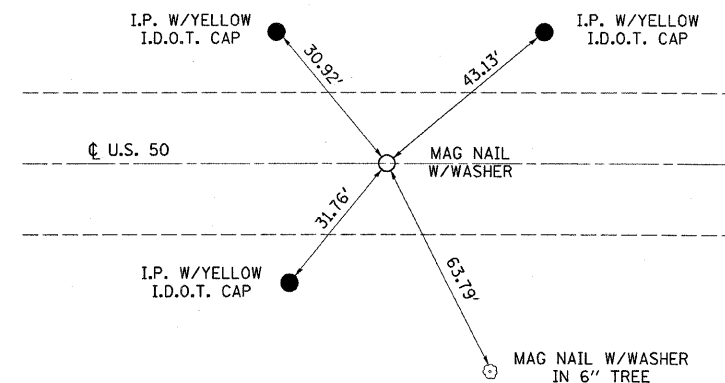
NOTE: NOT DRAWN TO SPECIFIC SCALE

P.O.T. STA. 338+61.94



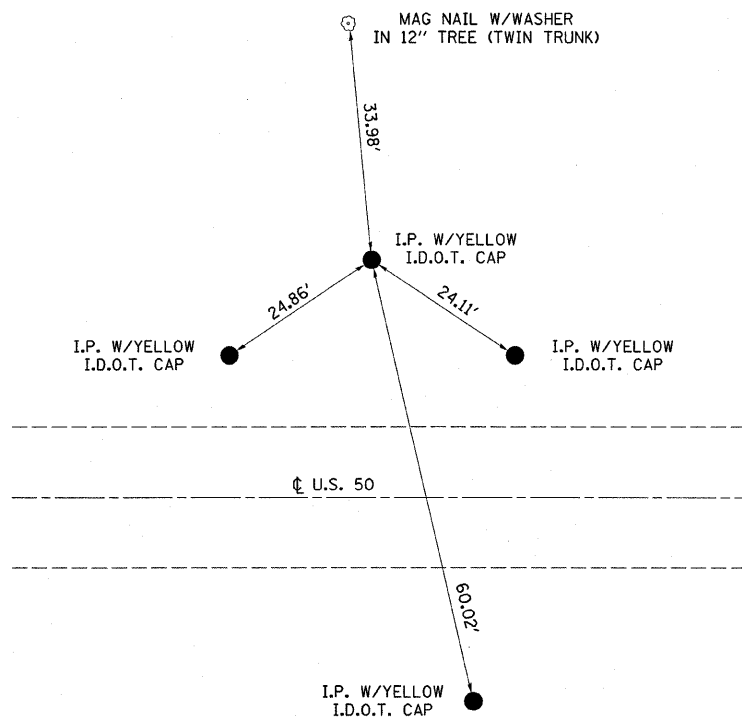
NOTE: NOT DRAWN TO SPECIFIC SCALE

P.O.T. STA. 381+92.09



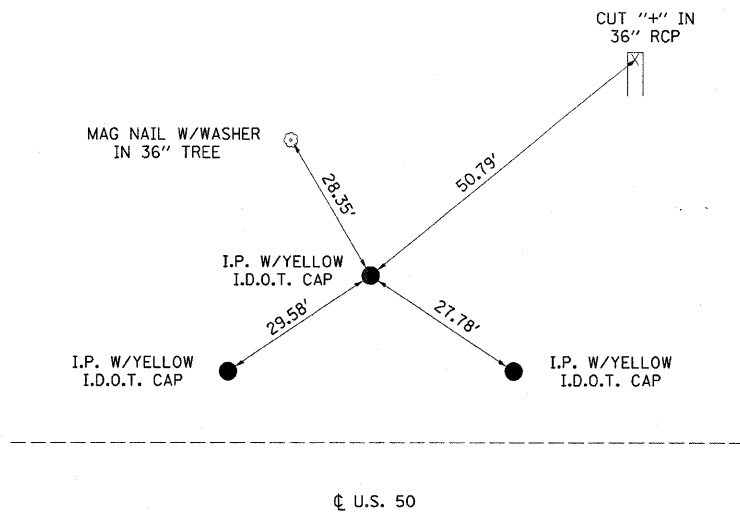
NOTE: NOT DRAWN TO SPECIFIC SCALE

P.O.T. STA. 340+00.00
 C OF SURVEY



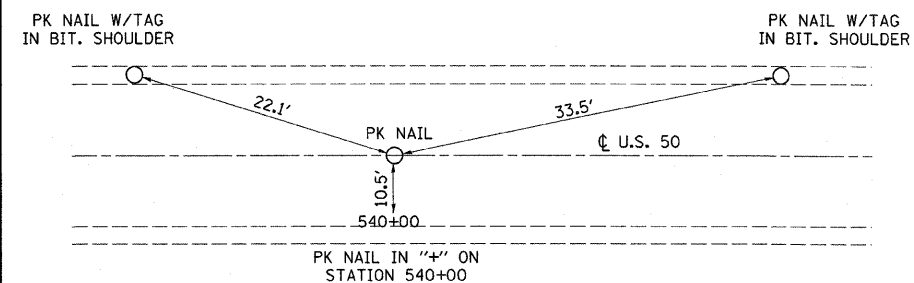
NOTE: NOT DRAWN TO SPECIFIC SCALE

P.O.T. STA. 380+00.00
 C OF SURVEY



NOTE: NOT DRAWN TO SPECIFIC SCALE

P.O.T. STA. 540+00.00



NOTE: NOT DRAWN TO SPECIFIC SCALE

FILE NAME =	USER NAME = swartzrw	DESIGNED -	REVISED -	STATE OF ILLINOIS DEPARTMENT OF TRANSPORTATION	TIE POINTS	F.A.P. RTE.	SECTION	COUNTY	TOTAL SHEETS	SHEET NO.	
c:\pwork\p1dot\swartzrw\dms56917\4794978-sht-details.dgn		DRAWN -	REVISED -			327	(2-2,3-2,51-23)RS-1	LAWRENCE	40	15	
PLOT SCALE = 50.0000' / IN.		CHECKED -	REVISED -			SCALE: NA SHEET NO. 1 OF 1 SHEETS STA. TO STA.		CONTRACT NO. 94978			
PLOT DATE = 12/9/2010		DATE -	REVISED -			FED. ROAD DIST. NO. ILLINOIS FED. AID PROJECT					