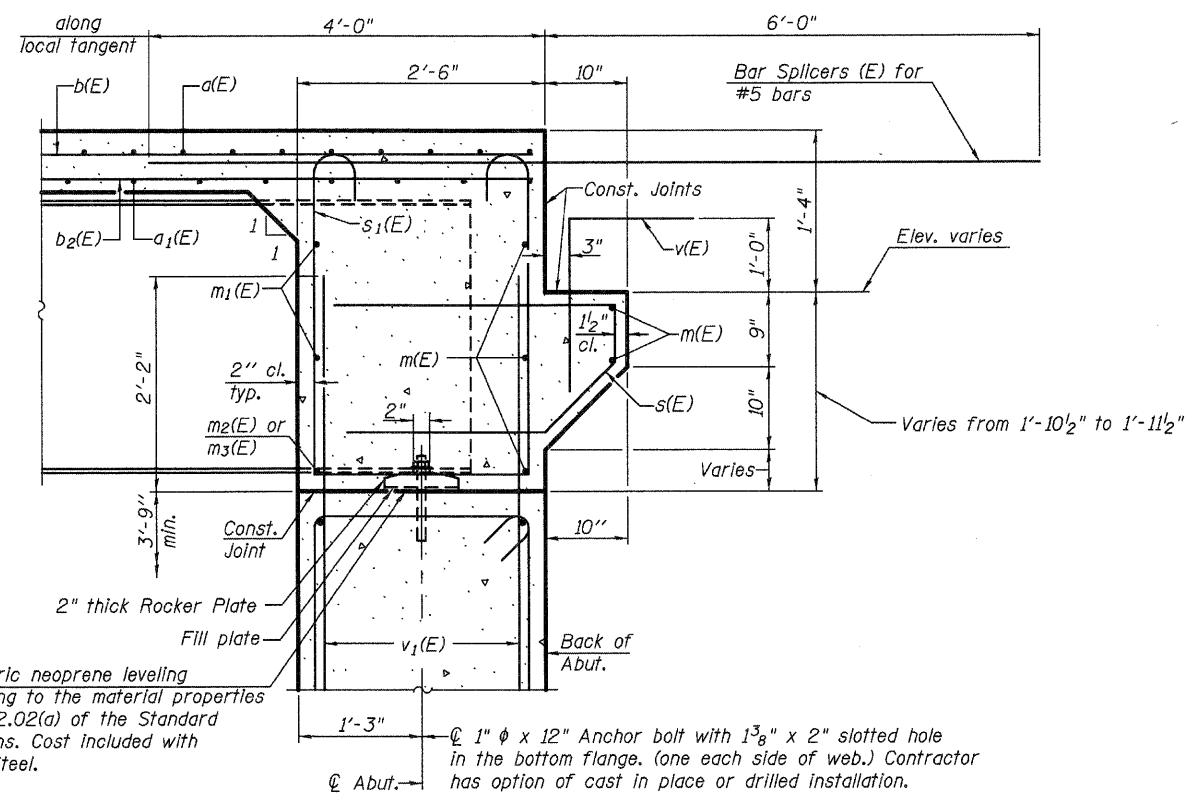


DIAPHRAGM ELEVATION AT ABUTMENT

South Abutment - shown, looking south
North Abutment - similar



Notes:
Reinforcement bars in diaphragm are billed with superstructure on sheet 12 of 32.
Concrete in diaphragm is included with Concrete Superstructure on sheet 12 of 32.
For details of bars s(E) & s1(E) see sheet 12 of 32.
The s(E) and s1(E) bars shall be placed parallel to the beams. Spacing for these bars shall be at right angles to the beams.
For details of bar v(E), see sheets 11 and 12 of 32.
For details of bar v1(E), see sheets 23 and 24 of 32.

MIN. BAR LAP
#6 bar = 3'-4"

SECTION A-A

Dimensions at right angles to abutment, except as shown.



FILE NAME =	USER NAME =	DESIGNED - MJP	REVISED -	STATE OF ILLINOIS DEPARTMENT OF TRANSPORTATION	DIAPHRAGM DETAILS STRUCTURE NO. 039-0073	F.A.S. RTE.	SECTION	COUNTY	TOTAL SHEETS	SHEET NO.
	PLOT SCALE =	CHECKED - RLM	REVISED -			1908	(13B)I-2	JACKSON	71	52
	PLOT DATE = 12/02/2010	DRAWN - PRC	REVISED -			CONTRACT NO. 98898				
		CHECKED - MJP	REVISED -			ILLINOIS FED. AID PROJECT				