

LOCATION		20200100	21101615	25000400	25000500	25000600	25200110	25200200	42001300	42400200	44000600	60265700	85000200	X1700112	X0327426	X0327611	X4240800	X8140238	Z0004562
CROSS STREET	CORNER	EARTH EXCAVATION	TOPSOIL FURNISH AND PLACE, 4"	NITROGEN FERTILIZER NUTRIENT	PHOSPHORUS FERTILIZER NUTRIENT	POTASSIUM FERTILIZER NUTRIENT	SODDING, SALT TOLERANT	SUPPLEMENTAL WATERING	PROTECTIVE COAT	PORTLAND CEMENT CONCRETE SIDEWALK 5 INCH	SIDEWALK REMOVAL	VALVE VAULTS TO BE ADJUSTED	MAINTENANCE OF EXISTING TRAFFIC SIGNAL INSTALLATION	BRICK PAVER REMOVAL	REBUILD EXISTING HANDHOLE	REMOVE AND REINSTALL BRICK PAVER	DETECTABLE WARNINGS (SPECIAL)	REBUILD EXISTING DOUBLE HANDHOLE	COMBINATION CONCRETE CURB AND GUTTER REMOVAL AND REPLACEMENT
		CU YD	SQ YD	POUND	POUND	POUND	SQ YD	UNIT	SQ YD	SQ FT	SQ FT	EACH	EACH	SQ FT	EACH	SQ FT	SQ FT	EACH	FOOT
GRANT STREET	NW	3.5	14.2	0.2	0.2	0.2	15.6	0.7	48	347	68	1		269			9		33
GRANT STREET	NE	3.9	9.3	0.1	0.1	0.1	10.3	0.5	58	393				389			10		49
DUNDEE AVENUE	NW	1.1	7.1	0.1	0.1	0.1	7.8	0.4	17	107	87		0.5	25	1		10		17
DUNDEE AVENUE	NE	2.1	6.7	0.1	0.1	0.1	7.3	0.3	31	209	89			120	2		10		26
HARRISON STREET	NW	1.6	15.4	0.2	0.2	0.2	17.0	0.8	28	160	73			152			11		35
APPLEBEE STREET	NW	3.0	17.3	0.2	0.2	0.2	19.1	0.9	46	300	105			195	1		11		43
APPLEBEE STREET	NE	2.1	8.2	0.1	0.1	0.1	9.0	0.4	36	211			0.5	199		2	14	1	44
HOUGH STREET (IL 59)	NE	4.2							57	419			0.5	418	2	19	33		38
COOK STREET	NE	2.1	6.4	0.1	0.1	0.1	7.1	0.3	29	209	204						12		19
ELA STREET	NW	2.3	4.2	0.1	0.1	0.1	4.6	0.2	35	229	129			100		5	12		32
ELA STREET	NE	2.7	15.1	0.2	0.2	0.2	16.6	0.7	42	272	36			255			22		40
TOTAL=		29	104	1	1	1	115	5	425	2,856	791	1	1.5	2,122	6	26	154	1	376

COUNTY: LAKE FUNDING SOURCE: STP


LOCATION		20200100	21101615	25000400	25000500	25000600	25200110	25200200	42001300	42400200	42000500	44000600	60600105	85000200	X1700112	X0327426	X0327611	X4240800	X4400220	X8140238	Z0004562
CROSS STREET	CORNER	EARTH EXCAVATION	TOPSOIL FURNISH AND PLACE, 4"	NITROGEN FERTILIZER NUTRIENT	PHOSPHORUS FERTILIZER NUTRIENT	POTASSIUM FERTILIZER NUTRIENT	SODDING, SALT TOLERANT	SUPPLEMENTAL WATERING	PROTECTIVE COAT	PORTLAND CEMENT CONCRETE SIDEWALK 5 INCH	PORTLAND CEMENT CONCRETE PAVEMENT 8"	SIDEWALK REMOVAL	FRAMES AND GRATES TO BE ADJUSTED	MAINTENANCE OF EXISTING TRAFFIC SIGNAL INSTALLATION	BRICK PAVER REMOVAL	REBUILD EXISTING HANDHOLE	REMOVE AND REINSTALL BRICK PAVER	DETECTABLE WARNINGS (SPECIAL)	CURB REMOVAL AND REPLACEMENT	REBUILD EXISTING DOUBLE HANDHOLE	COMBINATION CONCRETE CURB AND GUTTER REMOVAL AND REPLACEMENT
		CU YD	SQ YD	POUND	POUND	POUND	SQ YD	UNIT	SQ YD	SQ FT	SQ YD	SQ FT	EACH	EACH	SQ FT	EACH	SQ FT	SQ FT	FOOT	EACH	FOOT
DUNDEE AVENUE	SW	3.5	12.0	0.2	0.2	0.2	13.2	0.6	56	346		88		0.5	246			25		1	60
DUNDEE AVENUE	SE	2.7	4.4	0.1	0.1	0.1	4.9	0.2	47	274		77			190	1		13			56
APPLEBEE STREET	SW	1.3	8.2	0.1	0.1	0.1	9.0	0.4	20	130		104		0.5	15	1		10			19
APPLEBEE STREET	SE	2.1	1.8	0.0	0.0	0.0	2.0	0.1	30	207		93			89			8		1	25
HOUGH STREET (IL 59)	SE	5.2							77	518		124	1	0.5	369	2	4	12			67
PARK AVENUE	S	3.0							76	304	24	204			205		10	54	40		64
COOK STREET	SW	4.1							57	414					414		25	24			38
ELA STREET	S	2.7							40	274		163			110		4	10			33
SPRING STREET	SW	3.0	4.0	0.1	0.1	0.1	4.4	0.2	45	299		28			271		6	10			41
TOTAL=		28	30	1	1	1	33	2	448	2,766	24	881	1	1.5	1,909	3	49	166	40	2	403

COUNTY: COOK FUNDING SOURCE: STP

NOTE: RESTORATION (SODDING, NUTRIENTS AND TOPSOIL) LIMITS ARE SHOWN ON THE SITE PLANS WHEN SIDEWALK IS REMOVED AND REPLACED WITH SOD. HOWEVER, FOR RESTORATION AROUND NEW SIDEWALK, QUANTITY HAS BEEN PROVIDED BUT ITS NOT SHOWN ON THE SITE PLANS.

MODEL: Default FILE: \\bentley.com\pwworking\WOOD-US-DOIT\Documents\Projects\Project IDOT 2202211754 - IDOT BIRDET 1 - Various\CAD_Sheets\Work Order 20D157220-01-01-01.dgn

REVISED SHEET 2/24/2022

USER NAME = sjohnson	DESIGNED - JMM	REVISED  10/22/22
	DRAWN - SVJ	REVISED -
PLOT SCALE = 100.0000' / in.	CHECKED - DWB	REVISED -
PLOT DATE = 2/21/2022	DATE - 10/08/21	REVISED -

**STATE OF ILLINOIS
DEPARTMENT OF TRANSPORTATION**

**ADA RAMP IMPROVEMENTS
SCHEDULE OF QUANTITIES**

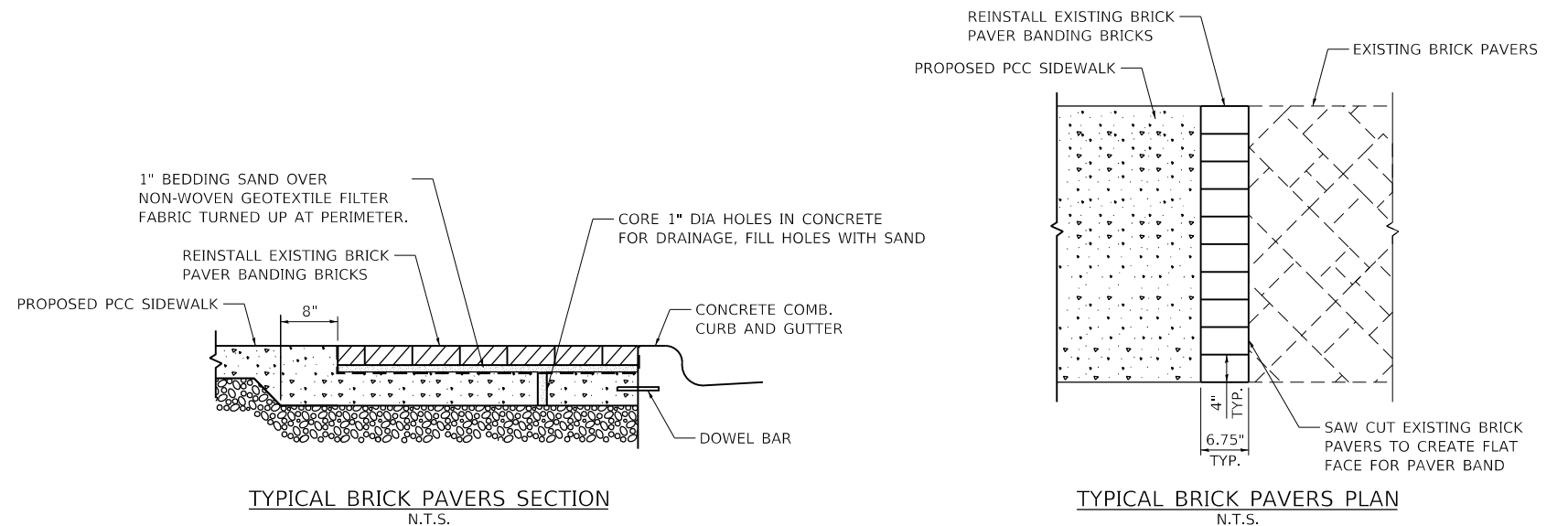
SCALE: NONE SHEET OF SHEETS STA. TO STA.

F.A. RTE.	SECTION	COUNTY	TOTAL SHEETS	SHEET NO.
1270	2020-160-RS&SW	COOK & LAKE	52	13
CONTRACT NO. 62M47				
ILLINOIS FED. AID PROJECT				

LOCATION		COUNTY: LAKE										FUNDING SOURCE: NHPP					
		20200100	21101615	25000400	25000500	25000600	25200110	25200200	42001300	42400200	44000600	85000200	X1700112	X0327611	X4240800	X8140238	Z0004562
CROSS STREET	CORNER	EARTH EXCAVATION	TOPSOIL FURNISH AND PLACE, 4"	NITROGEN FERTILIZER NUTRIENT	PHOSPHORUS FERTILIZER NUTRIENT	POTASSIUM FERTILIZER NUTRIENT	SODDING, SALT TOLERANT	SUPPLEMENTAL WATERING	PROTECTIVE COAT	PORTLAND CEMENT CONCRETE SIDEWALK 5 INCH	SIDEWALK REMOVAL	MAINTENANCE OF EXISTING TRAFFIC SIGNAL INSTALLATION	BRICK PAVER REMOVAL	REMOVE AND REINSTALL BRICK PAVER	DETECTABLE WARNINGS (SPECIAL)	REBUILD EXISTING DOUBLE HANDHOLE	COMBINATION CONCRETE CURB AND GUTTER REMOVAL AND REPLACEMENT
		CU YD	SQ YD	POUND	POUND	POUND	SQ YD	UNIT	SQ YD	SQ FT	SQ FT	EACH	SQ FT	SQ FT	SQ FT	EACH	FOOT
NORTHWEST HIGHWAY (US 14)	NW	4.2	10.0	0.1	0.1	0.1	11.0	0.5	63	427	54	0.5	375	7	25	1	54
NORTHWEST HIGHWAY (US 14)	NE	8.1	18.9	0.3	0.3	0.3	20.8	0.9	117	810			779		27		1
TOTAL=		12	29	1	1	1	32	1	180	1,237	54	0.5	1,154	7	52	2	148

LOCATION		COUNTY: COOK										FUNDING SOURCE: NHPP					
		20200100	21101615	25000400	25000500	25000600	25200110	25200200	42001300	42400200	44000600	85000200	X1700112	X0327426	X0327611	X4240800	Z0004562
CROSS STREET	CORNER	EARTH EXCAVATION	TOPSOIL FURNISH AND PLACE, 4"	NITROGEN FERTILIZER NUTRIENT	PHOSPHORUS FERTILIZER NUTRIENT	POTASSIUM FERTILIZER NUTRIENT	SODDING, SALT TOLERANT	SUPPLEMENTAL WATERING	PROTECTIVE COAT	PORTLAND CEMENT CONCRETE SIDEWALK 5 INCH	SIDEWALK REMOVAL	MAINTENANCE OF EXISTING TRAFFIC SIGNAL INSTALLATION	BRICK PAVER REMOVAL	REBUILD EXISTING HANDHOLE	REMOVE AND REINSTALL BRICK PAVER	DETECTABLE WARNINGS (SPECIAL)	COMBINATION CONCRETE CURB AND GUTTER REMOVAL AND REPLACEMENT
		CU YD	SQ YD	POUND	POUND	POUND	SQ YD	UNIT	SQ YD	SQ FT	SQ FT	EACH	SQ FT	EACH	SQ FT	SQ FT	FOOT
SPRING STREET	SE	2.8	6.9	0.1	0.1	0.1	7.6	0.3	37	284	75		174			14	32
NORTHWEST HIGHWAY (US 14)	SW	4.8							63	477	0	0.5	461	1	10	31	58
NORTHWEST HIGHWAY (US 14)	SE	4.9	11.1	0.2	0.2	0.2	12.2	0.6	67	489	469			1		39	71
TOTAL=		13	18	1	1	1	20	1	167	1,250	544	0.5	635	2	10	84	161

NOTE: RESTORATION (SODDING, NUTRIENTS AND TOPSOIL) LIMITS ARE SHOWN ON THE SITE PLANS WHEN SIDEWALK IS REMOVED AND REPLACED WITH SOD. HOWEVER, FOR RESTORATION AROUND NEW SIDEWALK, QUANTITY HAS BEEN PROVIDED BUT ITS NOT SHOWN ON THE SITE PLANS.



REVISED SHEET 2/24/2022

MODEL: Default
FILE: \\bentley.com\p01\Bentley.com\WOOD-US-1\DOT\Documents\Projects\Project IDOT 2202211754 - IDOT BIFIDE 1 - Vardus\CAD_Sheets\Work Order 20D157220-01c-dba-dgn

USER NAME = sjohnson	DESIGNED - JMM	REVISED Δ 2/22/22
	DRAWN - SVJ	REVISED -
PLOT SCALE = 100,0000' / in.	CHECKED - DWB	REVISED -
PLOT DATE = 2/21/2022	DATE - 10/08/21	REVISED -

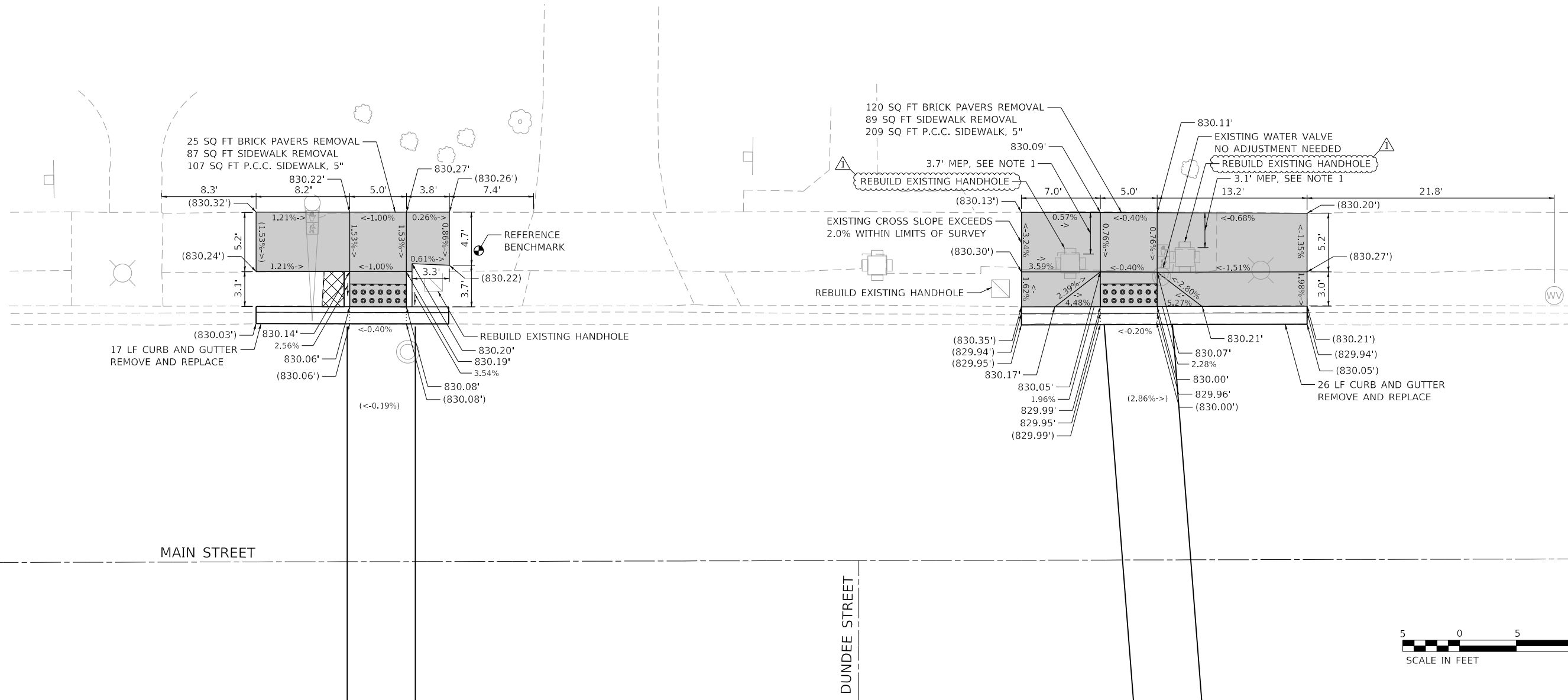
**STATE OF ILLINOIS
DEPARTMENT OF TRANSPORTATION**

**ADA RAMP IMPROVEMENTS
SCHEDULE OF QUANTITIES**

SCALE: NONE SHEET OF SHEETS STA. TO STA.

F.A. RTE.	SECTION	COUNTY	TOTAL SHEETS	SHEET NO.
1270	2020-160-R5&SW	COOK & LAKE	52	14
CONTRACT NO. 62M47				
ILLINOIS FED. AID PROJECT				

ADA DETAILS FOR PHASE 2 PROJECTS



REFERENCE BENCHMARK : ELEV. 830.252
 BENCHMARK : CONTROL POINT CROSS CUT ON WALK
 LOCATION : NW CORNER OF MAIN STREET AND DUNDEE STREET
 AT LOCATION SHOWN ABOVE

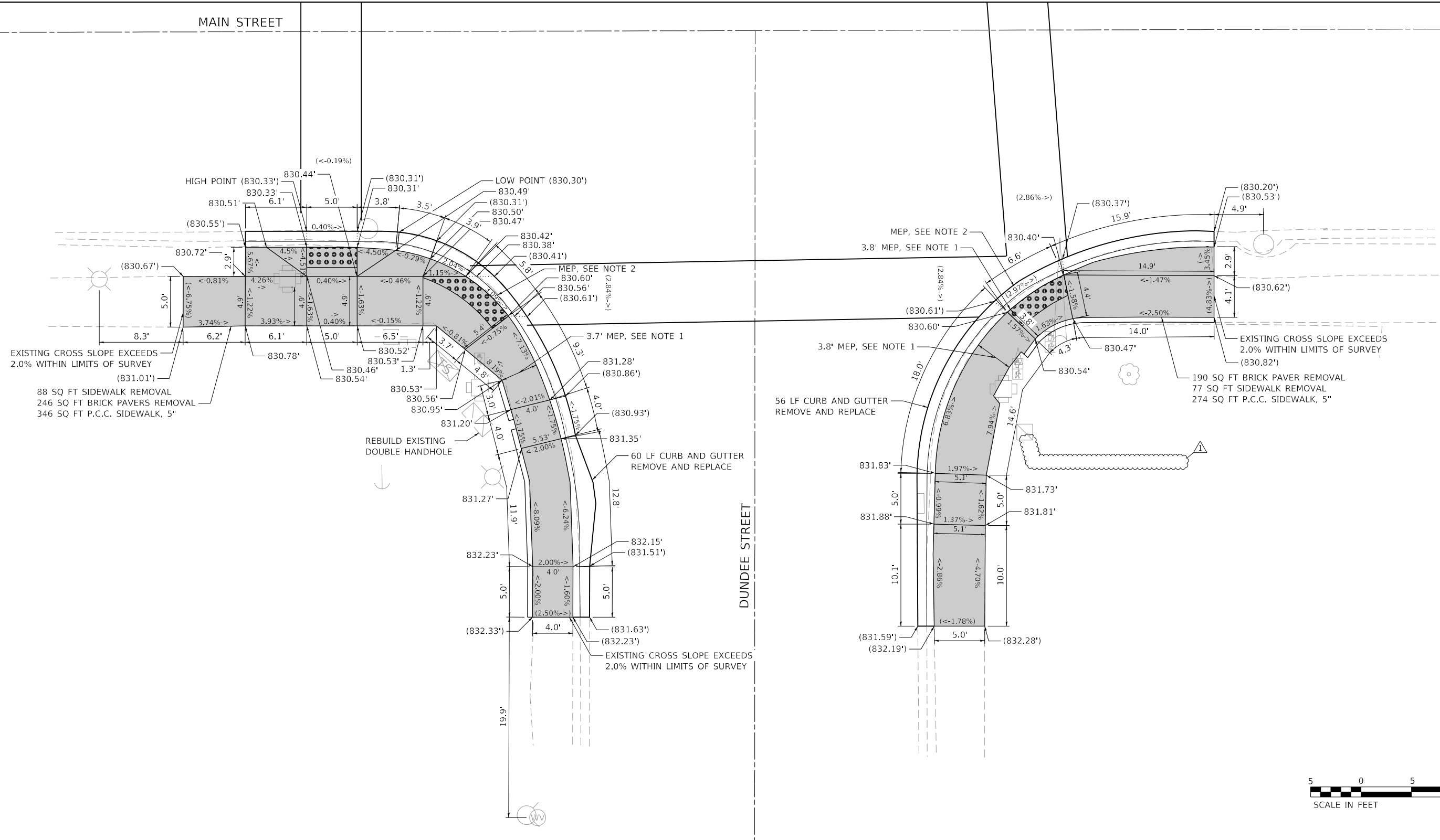
LEGEND	
XX.X'	EXISTING LENGTH
---	PROPOSED SIDE CURB
()	EXISTING ELEVATION/SLOPE
	PROPOSED SIDEWALK
	DETECTABLE WARNINGS (SPECIAL)
	SIDEWALK REMOVAL REPLACE W/ TOPSOIL & SOD

NOTES:
 1. CLEARANCE WIDTH IS LESS THAN THE MINIMUM WIDTH OF FOUR FEET.
 SIDEWALK IS DESIGNED TO THE MAXIMUM EXTENT PRACTICABLE (MEP).

MODEL: Default
 FILE: Mainfile: p:\main\rechner-us-cms-pub\entley.com\WOOD-US-IDD\Documents\Projects\Project IDOT 2202211754 - IDOT BIFRIDE 1 - Vardus\CAD_Sheets\Work Order 20D157220-0-0-0-0-0-0.dgn

USER NAME = sjohnson DRAWN - SVJ PLOT SCALE = 100.0000' / in. PLOT DATE = 2/21/2022	DESIGNED - JMM CHECKED - DWB DATE - 10/08/21	REVISED 2/22/2022 REVISED - REVISED - REVISED -	STATE OF ILLINOIS DEPARTMENT OF TRANSPORTATION	MAIN STREET AND DUNDEE STREET ADA RAMP IMPROVEMENTS	F.A.U. RTE. 1270 SECTION 2020-160-RS&SW COUNTY LAKE TOTAL SHEETS 52 SHEET NO. 16 CONTRACT NO. 62M47 ILLINOIS FED. AID PROJECT
SCALE: 1" = 5' SHEET OF SHEETS STA. TO STA.					

ADA DETAILS FOR PHASE 2 PROJECTS



REFERENCE BENCHMARK : ELEV. 830.252
 BENCHMARK : CONTROL POINT CROSS CUT ON WALK
 LOCATION : NW CORNER OF MAIN STREET AND DUNDEE STREET

LEGEND

- EXISTING LENGTH (XX.X')
- PROPOSED SIDE CURB
- EXISTING ELEVATION/SLOPE
- PROPOSED SIDEWALK
- DETECTABLE WARNINGS (SPECIAL)
- SIDEWALK REMOVAL REPLACE W/ TOPSOIL & SOD

NOTES:

- CLEARANCE WIDTH IS LESS THAN THE MINIMUM WIDTH OF FOUR FEET. SIDEWALK IS DESIGNED TO THE MAXIMUM EXTENT PRACTICABLE (MEP).
- EXISTING SLOPE IS GREATER THAN 2% MAXIMUM ALLOWED. SIDEWALK IS DESIGNED TO THE MAXIMUM EXTENT PRACTICABLE (MEP).

**STATE OF ILLINOIS
 DEPARTMENT OF TRANSPORTATION**

**MAIN STREET AND DUNDEE STREET
 ADA RAMP IMPROVEMENTS**

REVISED SHEET 2/24/2022

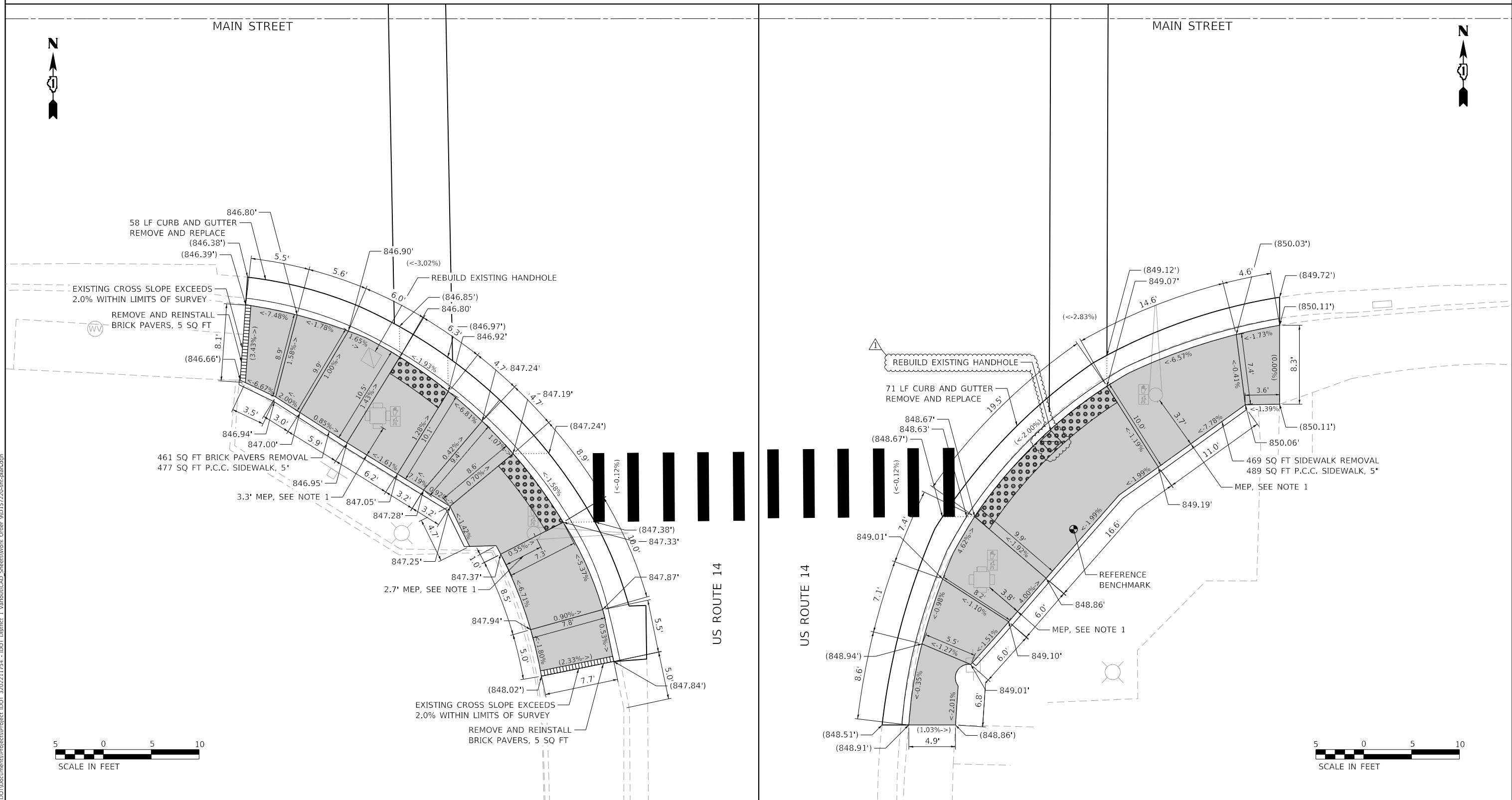
USER NAME = sjohnson	DESIGNED - JMM	REVISED 2/22/2022
DRAWN - SVJ	CHECKED - DWB	REVISED -
PLOT SCALE = 100.0000' / in.	DATE - 10/08/21	REVISED -
PLOT DATE = 2/21/2022		

SCALE: 1" = 5' SHEET OF SHEETS STA. TO STA.

F.A.U. RTE.	SECTION	COUNTY	TOTAL SHEETS	SHEET NO.
1270	2020-160-RS&SW	COOK	52	17
CONTRACT NO. 62M47				
ILLINOIS		FED. AID PROJECT		

MODEL: Default
 FILE: \\hpc\p\amr\chec-us-cms-pub\entley.com\WOOD-US-IDOT\Documents\Projects\Project IDOT 2202211754 - IDOT BIFRID 1 Vardus\CAD_Sheets\Work Order 20D157220-ht-ada-ada.dgn

ADA DETAILS FOR PHASE 2 PROJECTS



REFERENCE BENCHMARK : ELEV. 849.249
 BENCHMARK : CONTROL POINT CROSS CUT ON WALK
 LOCATION : SE CORNER OF MAIN STREET AND US ROUTE 14
 AT LOCATION SHOWN ABOVE

LEGEND

- XX.X' EXISTING LENGTH
- PROPOSED SIDE CURB
- () EXISTING ELEVATION/SLOPE
- PROPOSED SIDEWALK
- DETECTABLE WARNINGS (SPECIAL)
- SIDEWALK REMOVAL REPLACE W/ TOPSOIL & SOD

NOTES:

1. CLEARANCE WIDTH IS LESS THAN THE MINIMUM WIDTH OF FOUR FEET. SIDEWALK IS DESIGNED TO THE MAXIMUM EXTENT PRACTICABLE (MEP).

MODEL: Default FILE: Main16_Plan16amrctch-us-ramp-pla-bentley.com\WOOD-US-IDDOT\Documents\Projects\Project IDOT 2202211754 - IDOT BIFIDE: 1_Vandus\CAD_Sheets\Work Order 20D157220-04-bifide.dgn

USER NAME = sjohnson	DESIGNED - JMM	REVISED 2/22/2022
PLOT SCALE = 100.0000' / in.	DRAWN - SVJ	REVISED -
PLOT DATE = 2/21/2022	CHECKED - DWB	REVISED -
	DATE - 10/08/21	REVISED -

**STATE OF ILLINOIS
DEPARTMENT OF TRANSPORTATION**

**MAIN STREET AND US ROUTE 14 (NORTHWEST HIGHWAY)
ADA RAMP IMPROVEMENTS**

SCALE: 1" = 5' SHEET OF SHEETS STA. TO STA.

F.A.U. RTE. 1270	SECTION 2020-160-R5&SW	COUNTY COOK	TOTAL SHEETS 52	SHEET NO. 28
CONTRACT NO. 62M47				
ILLINOIS FED. AID PROJECT				

REVISED SHEET 2/24/2022