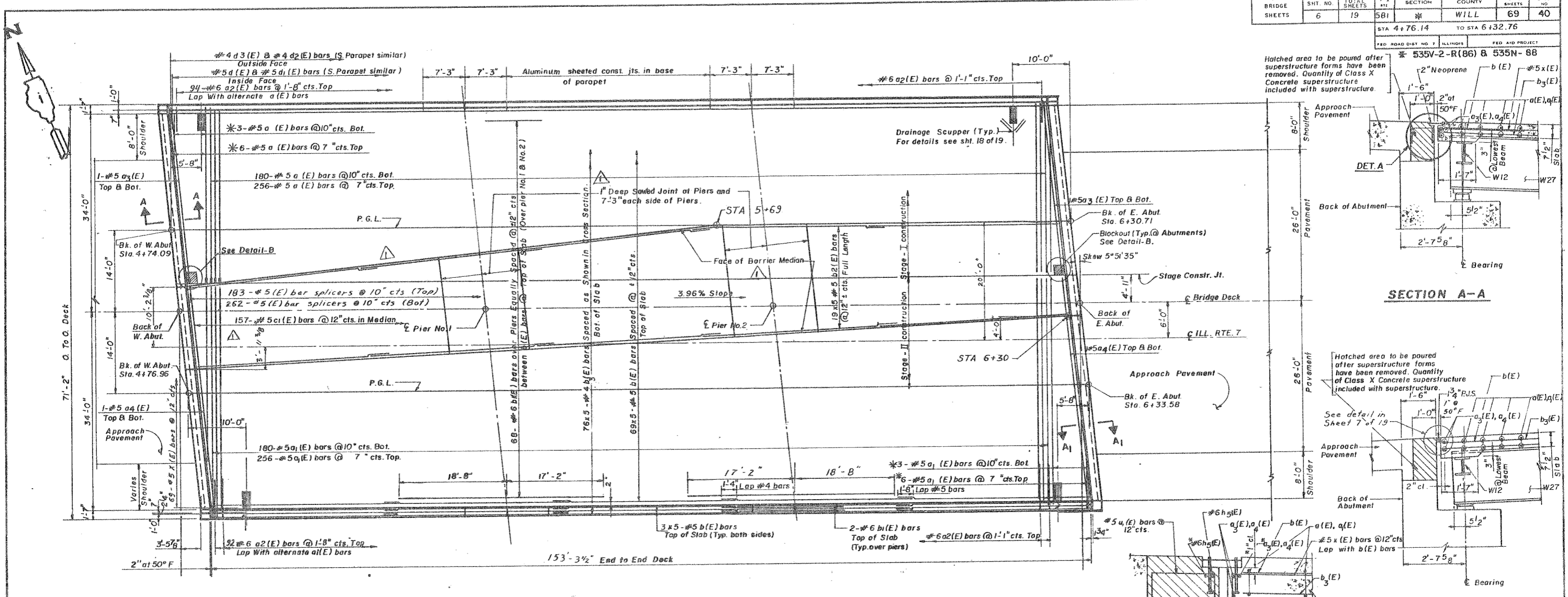


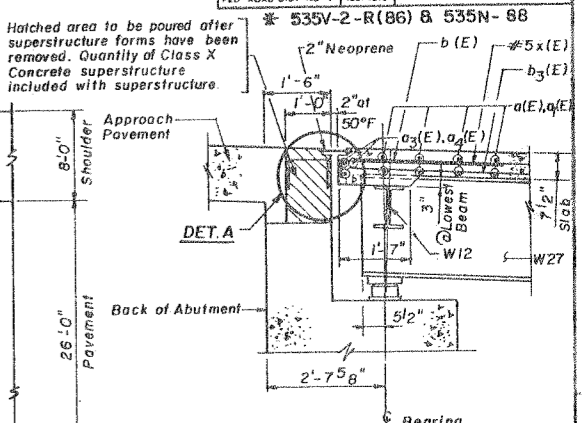
STA 4+76.14 TO STA 6+32.76
 ILL. ROAD DIST. NO. 7 ILLINOIS
 FED. AID PROJECT NO. 535V-2-R(86) & 535N-68



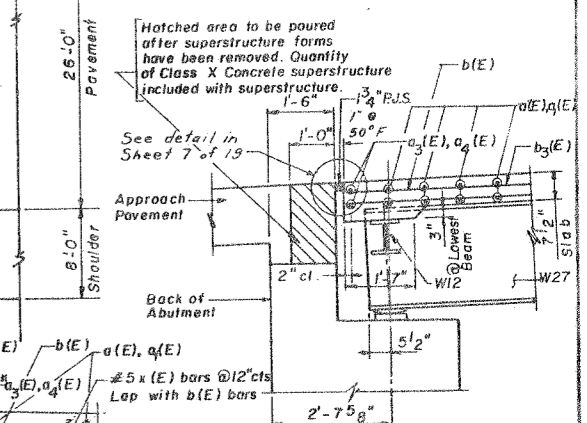
PLAN

* Bars #5 @ (E) are to be ordered full length and cut to fit skew and use remainder of bars in opposite end.

NOTE:
 * Place $a_3(E)$, $a_4(E)$ & $b_5(E)$ bars in back of anchor bolt as shown if required to maintain 1" cl. (10'-15")
 Anchor bolts should be tied to $a_3(E)$, $a_4(E)$ & $b_5(E)$ bars

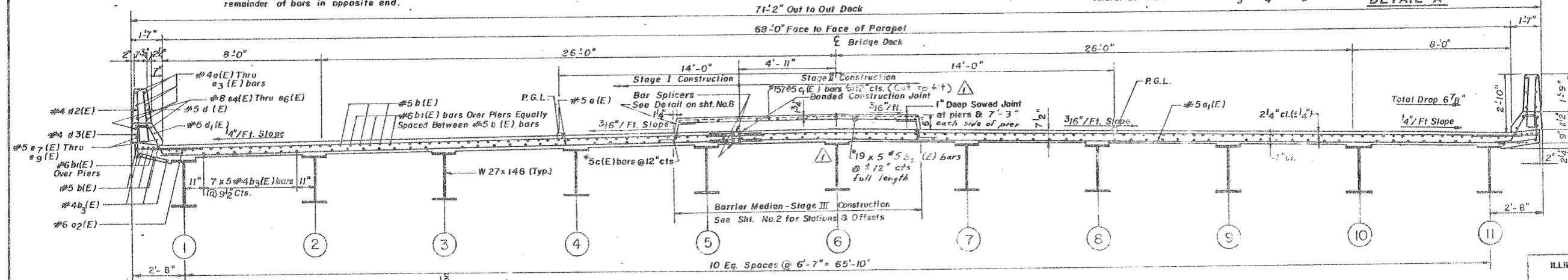


SECTION A-A

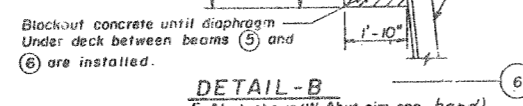


SECTION A1-A1

- NOTES:**
- See sheet No. 7 of 19 for superstructure details and bill of material.
 - Reinforcement bars designated (E) shall be epoxy coated.
 - Bars indicated thus 76 x 5 - #5 etc. indicates 76 lines of bars with 5 lengths per line.
 - See sheet No. 7 of 19 for parapet reinforcement.



CROSS SECTION
Looking East



DETAIL-B
E. Abut. shown (W. Abut. sim. opp. hand)

DESIGNED	I. N. SONKIN G. B. CHOKSI
CHECKED	S. C. Mehta
DRAWN	B. ABBASI
CHECKED	G. E. KRUPA

REVISIONS	
NAME	DATE
A. George Krupa	8-3-99

ILLINOIS DEPARTMENT OF TRANSPORTATION
SUPERSTRUCTURE
 ILL. RTE. 7 OVER E. J. & E. RAILROAD IN LOCKPORT
 F.A.P. RTE. 581 SECTION: 535V-2-R(86)
 Sta. 5+63.50
 WILL COUNTY
 SCALE: VERT. NONE
 DATE: MAR. 1999
 STRUCTURE NO. 099-0274

DHA DELON HAMPTON & ASSOCIATES, Chartered
 Engineers Architects Planners