

STATE OF ILLINOIS
DEPARTMENT OF TRANSPORTATION

F.A.I. RTE.	SECTION	COUNTY	TOTAL SHEETS	SHEET NO.
55	2021-159-BR	WILL	28	1
		ILLINOIS	CONTRACT NO. 62P81	

PROPOSED HIGHWAY PLANS

FAI ROUTE 55 (1-55) AT VARIOUS
LOCATIONS SECTION: 2021-159-BP
PROJECT: NHPP - 03IF(759)
BRIDGE PAINTING
WILL COUNTY

C-91-053-22

FOR INDEX OF SHEETS, SEE SHEET NO. 2

TRAFFIC DATA

STRUCTURE NO.: 099-0016 & 099-0017
SB & NB I-55 OVER US ROUTE 30

2019 ADT = 66,700
SPEED LIMIT = 65 MPH

STRUCTURE NO.: 099-0018 & 099-0019
NB & SB I-55 OVER RAILROAD

2019 ADT = 88,400
SPEED LIMIT = 65 MPH

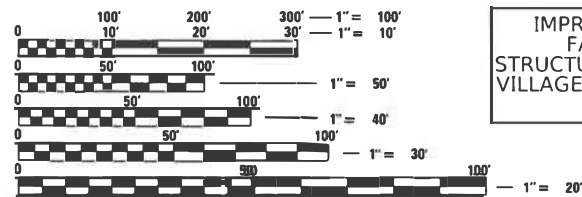
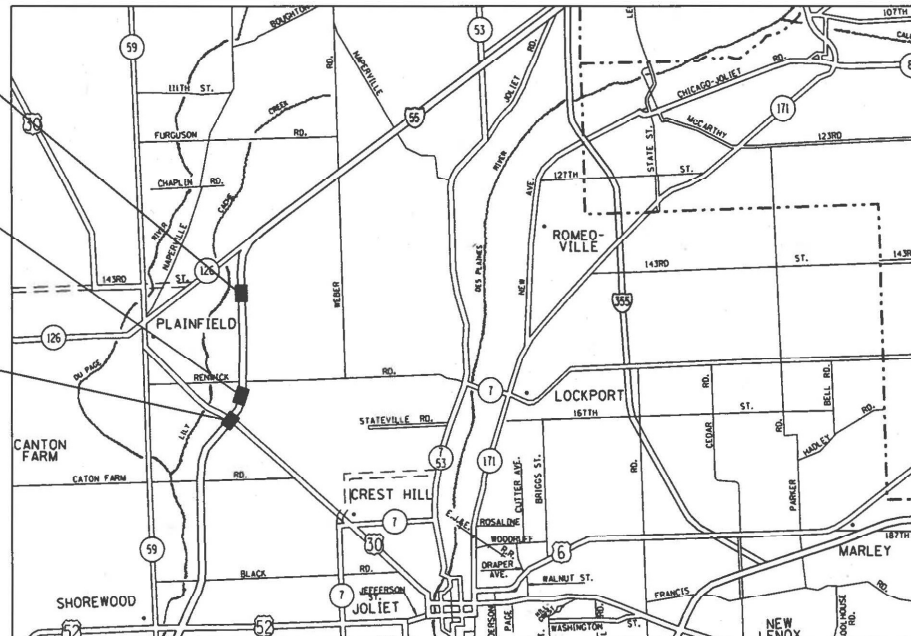
STRUCTURE NO.: 099-0022 & 099-0023
NB & SB I-55 OVER ABANDONED RAILROAD

2019 ADT = 88,400
SPEED LIMIT = 65 MPH

IMPROVEMENT LOCATION 3:
FAI 55: I-55 AT ABANDONED RAILROAD
STRUCTURE NO.: 099-0022 & 0023
VILLAGE OF ROMEOVILLE & PLAINFIELD

IMPROVEMENT LOCATION 2:
FAI 55: I-55 AT RAILROAD
STRUCTURE NO.: 099-0018 & 0019
VILLAGE OF PLAINFIELD

IMPROVEMENT LOCATION 1:
FAI 55: I-55 AT US-30
STRUCTURE NO.: 099-0016 & 0017
VILLAGE OF PLAINFIELD & CITY OF JOLIET



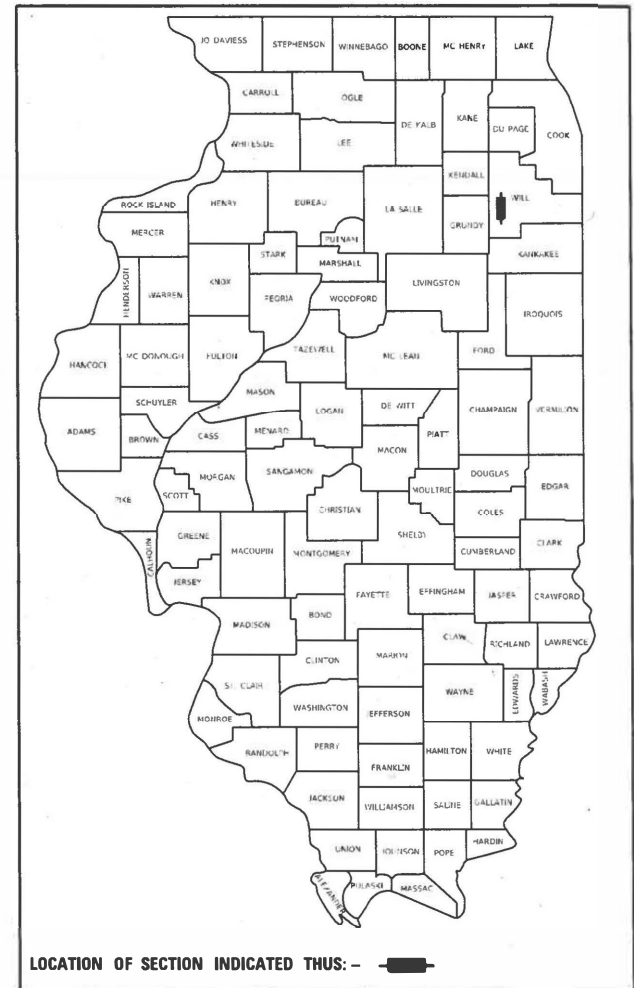
FULL SIZE PLANS HAVE BEEN PREPARED USING STANDARD ENGINEERING SCALES. REDUCED SIZED PLANS WILL NOT CONFORM TO STANDARD SCALES. IN MAKING MEASUREMENTS ON REDUCED PLANS, THE ABOVE SCALES MAY BE USED.

J.U.L.I.E.
JOINT UTILITY LOCATION INFORMATION FOR EXCAVATORS
1-800-892-0123
OR 811

PROJECT ENGINEER: RODRIGO LEDEZMA (847)705-4580
PROJECT MANAGER: JEAN ALAIN MIDY (847)221-3056

CONTRACT NO.: 62P81

D-91-060-22



LOCATION OF SECTION INDICATED THUS: [shaded area]

STATE OF ILLINOIS
DEPARTMENT OF TRANSPORTATION

SUBMITTED ~~DECEMBER 9~~ 20 21

Juan Piro (CB3)

REGIONAL ENGINEER

February 4 20 22

Stephen M. Smith
ENGINEER OF DESIGN AND ENVIRONMENT

February 4 20 22

Stephen M. Smith
DIRECTOR OF HIGHWAYS PROJECT IMPLEMENTATION

PRINTED BY THE AUTHORITY
OF THE STATE OF ILLINOIS

INDEX OF SHEETS

1	COVER SHEET
2	INDEX OF SHEETS, STATE STANDARDS AND GENERAL NOTES
3	SUMMARY OF QUANTITIES
4-8	EXISTING BRIDGE PLANS (SN 099-0016 & 0017)
9-15	EXISTING BRIDGE PLANS (SN 099-0018 & 0019)
16-22	EXISTING BRIDGE PLANS (SN 099-0022 & 0023)
23	ENTRANCE AND EXIT RAMP CLOSURE DETAILS (TC-08)
24	TRAFFIC CONTROL DETAILS FOR FREEWAY SINGLE & MULTI-LANE WEAVE (TC-09)
25	TRAFFIC CONTROL AND PROTECTION FOR SIDE ROADS, INTERSECTIONS, AND DRIVEWAYS (TC-10)
26	TRAFFIC CONTROL AND PROTECTION AT TURN BAYS (TO REMAIN) OPEN TO TRAFFIC (TC-14)
27	TRAFFIC CONTROL DETAILS FOR FREEWAY SHOULDER CLOSURES AND PARTIAL RAMP CLOSURES (TC-17)
28	ARTERIAL ROAD INFORMATION SIGN (TC-22)

STATE STANDARDS

STANDARD NO.	DESCRIPTION
701011-04	OFF-RD MOVING OPERATION 2L, 2W, DAY ONLY
701101-05	OFF-ROAD OPERATIONS, MULTILANE, 15' TO 24" FROM PAVEMENT EDGE
701301-04	LANE CLOSURE, 2L, 2W SHORT TIME OPERATIONS
701311-03	LANE CLOSURE 2L, 2W MOVING OPERATIONS DAY ONLY
701400-09	APPROACH TO LANE CLOSURE, FREEWAY/EXPRESSWAY
701401-12	LANE CLOSURE, FREEWAY/EXPRESSWAY
701411-09	LANE CLOSURE, MULTILANE, AT ENTRANCE OR EXIT RAMP FOR SPEEDS > 45MPH
701428-01	TRAFFIC CONTROL SETUP AND REMOVAL FREEWAY/EXPRESSWAY
701501-06	URBAN LANE CLOSURE 2L, 2W, UNDIVIDED
701606-10	URBAN SINGLE LANE CLOSURE, MULTILANE, 2W WITH MOUNTABLE MEDIAN
701901-08	TRAFFIC CONTROL DEVICES

GENERAL NOTES

BEFORE STARTING ANY EXCAVATION, THE CONTRACTOR SHALL CALL "J.U.L.I.E." AT (800) 892-0123 OR 811 FOR FIELD LOCATIONS OF BURIED ELECTRIC, TELEPHONE AND GAS UTILITIES. 48 HOUR NOTIFICATION IS REQUIRED.

THE CONTRACTOR SHALL COORDINATE CONSTRUCTION ACTIVITIES WITH UTILITY COMPANIES, CITY OF JOLIET AND VILLAGES OF PLAINFIELD & ROMEOVILLE.

PLAN DIMENSIONS AND DETAILS RELATIVE TO EXISTING PLANS ARE SUBJECT TO NOMINAL CONSTRUCTION VARIATIONS. THE CONTRACTOR SHALL FIELD VERIFY EXISTING DIMENSIONS AND DETAILS AFFECTING NEW CONSTRUCTION AND MAKE NECESSARY APPROVED ADJUSTMENTS PRIOR TO CONSTRUCTION OR ORDERING OF MATERIALS. SUCH VARIATIONS SHALL NOT BE CAUSE FOR ADDITIONAL COMPENSATION FOR A CHANGE IN SCOPE OF THE WORK, HOWEVER, THE CONTRACTOR WILL BE PAID FOR THE QUANTITY ACTUALLY FURNISHED BASED AT THE UNIT PRICE BID FOR THE WORK.

THE CONTRACTOR WILL NOT BE ALLOWED TO SET UP A YARD OR FIELD OFFICE ON STATE PROPERTY WITHOUT WRITTEN PERMISSION FROM THE DEPARTMENT.

THE CONTRACTOR SHALL CONTACT THE DISTRICT ONE TRAFFIC CONTROL SUPERVISOR AT KALPANA.KANNAN-HOSADURGA@ILLINOIS.GOV FOR ARTERIALS AND (847)705-4151 FOR EXPRESSWAYS A MINIMUM OF 72 HOURS IN ADVANCE OF BEGINNING WORK.

THESE PLANS HAVE BEEN PREPARED FROM NOTES RECEIVED FROM THE BUREAU OF MAINTENANCE BRIDGE INSPECTORS.

IT SHALL BE THE CONTRACTOR'S RESPONSIBILITY TO PROTECT AND MAINTAIN THE EXISTING BRIDGE LIGHTING AT ANY LOCATIONS THAT LIGHTING IS ENCOUNTERED ADJACENT TO AN AREA TO BE CLEANED AND PAINTED.

THE CONTRACTOR SHALL BE REQUIRED TO PROVIDE ACCESS TO ABUTTING PROPERTY AT ALL TIMES DURING THE CONSTRUCTION OF THIS PROJECT.

WHEN ARTIFICIAL LIGHTING IS UTILIZED IN NIGHTTIME OPERATIONS, THE CONTRACTOR SHALL EXERCISE THE OUTMOST PRECAUTIONS PREVENTING ADVERSE VISIBILITY TO THE MOTORING PUBLIC AND ADJACENT RESIDENTIAL AREAS.

THE CONTRACTOR SHALL REQUEST AND GAIN THE APPROVAL FROM THE ILLINOIS DEPARTMENT OF TRANSPORTATION'S EXPRESSWAY TRAFFIC OPERATIONS ENGINEER AT WWW.IDOTLCS.COM TWENTY FOUR (24) HOURS IN ADVANCE OF ALL DAILY LANE, RAMP AND SHOULDER CLOSURES. THIS ADVANCE NOTIFICATION IS CALCULATED BASED ON WORKWEEK OF MONDAY THROUGH FRIDAY AND SHALL NOT INCLUDE WEEKENDS OR HOLIDAYS.

THE CONTRACTOR SHALL TAKE NECESSARY PRECAUTIONS WHEN WORKING NEAR THE ABUTMENTS IF ELECTRICAL JUNCTIONS BOXES AND ATTACHED CONDUITS ARE PRESENT.

DO NOT SCALE PLANS FOR CONSTRUCTION DIMENSIONS.

TC-22 TO BE USE ONLY FOR ARTERIAL.

GENERAL PAINT NOTES

CLEANING AND PAINTING OF THE EXISTING STRUCTURAL STEEL SHALL BE AS SPECIFIED IN THE SPECIAL PROVISION FOR "CLEANING AND PAINTING EXISTING STEEL STRUCTURES".

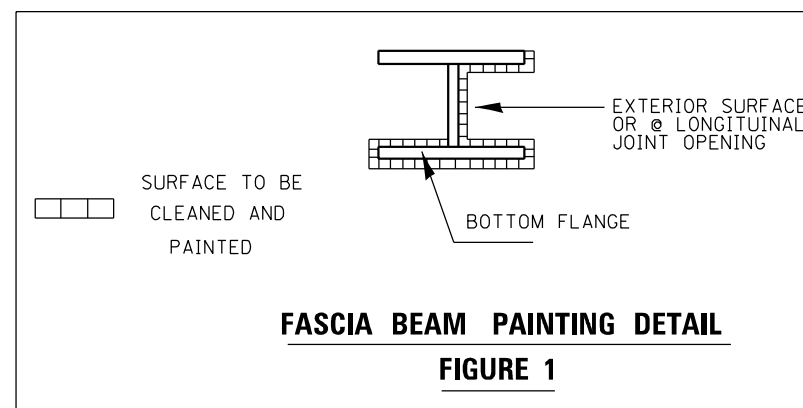
ALL ITEMS (SUCH AS, BUT NOT LIMITED TO: CONDUITS, BRACKETS AND DECK DRAINS) ATTACHED TO OUTSIDE OF THE FASCIA BEAMS SHOULD BE CLEANES AND PAINTED.

FOR ALL STRUCTURES: ALL BEAMS, BEARINGS AND OTHER STRUCTURAL STEEL WITHIN FIVE (5) FT. (MEASURED ALONG THE BEAM) OF EITHER SIDE OF ALL DECK JOINTS, SHALL BE CLEANED PER NEAR WHITE BLAST CLEANING SSPC-SP10.

FOR ALL STRUCTURES: THE EXTERIOR SURFACES AND TOP AND BOTTOM OF THE BOTTOM FLANGE OF THE FACIA BEAM OUTSIDE THE DECK JOINTS FOR THE LENGHT OF THE BRIDGE (SEE FIGURE 1) SHALL BE CLEANED PER NEAR WHITE BLAST CLEANING SSPC-SP-10.

THESE AREAS SHALL BE PAINTED ACCORDING TO THE REQUIREMENTS OF PAINT SYSTEM 1 -0Z/E/U. THE COLOR OF THE FINAL FINISH COAT FOR ALL INTERIOR STEEL SURFACES SHALL BE GRAY, MUNSELL NO 5B 7/1. THE COLOR OF THE FINAL FINISH COAT FOR THE EXTERIOR AND BOTTOM FLANGE OF THE FASCIA BEAMS SHALL BE REDDISH BROWN, MUNSELL NO 2. 5YR 3/4.

A MINIMUM OF 1 AIR MONITOR AT EVERY LOCATION WILL BE REQUIRED TO MONITORE ABRASIVE BLASTING OPERATIONS. SEE SPECAIL PROVISIONS FOR "CONTAINMENT AND DISPOSAL OF LEAD PAINT CLEANING RESIDUE".



**STATE OF ILLINOIS
DEPARTMENT OF TRANSPORTATION**

**INDEX OF SHEETS, STATE STANDARDS
GENERAL NOTES AND GENERAL PAINT NOTES**

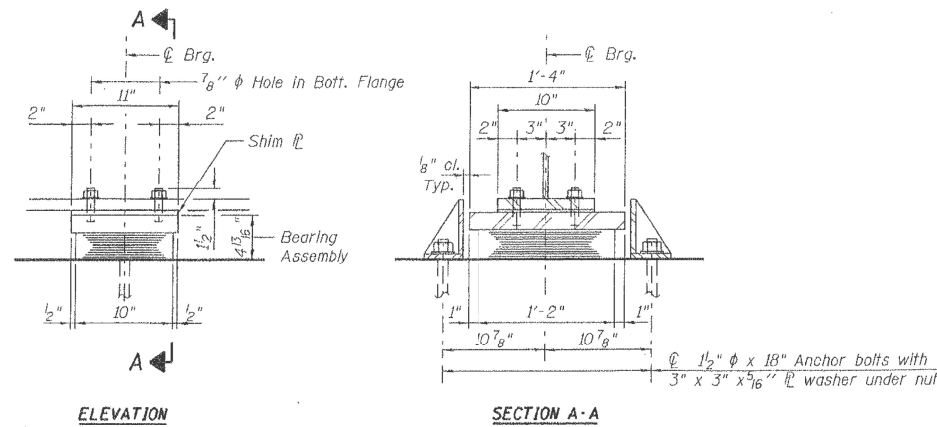
SCALE: SHEET OF SHEETS STA. TO STA.

F.A.I. RTE.	SECTION	COUNTY	TOTAL SHEETS	SHEET NO.
55	2021-159-BR	WILL	28	2
CONTRACT NO. 62P81				
ILLINOIS FED. AID PROJECT				

SUMMARY OF QUANTITIES			URBAN TOTAL QUANTITIES 90% FED 10% STATE	CONSTRUCTION TYPE CODE					
CODE NO	ITEM	UNIT		0047 BRIDGE 1 SN 099-0016 LOC. 1	0047 BRIDGE 2 SN 099-0017 LOC. 1	0047 BRIDGE 3 SN 099-0018 LOC. 2	0047 BRIDGE 4 SN 099-0019 LOC. 2	0047 BRIDGE 5 SN 099-0022 LOC. 3	0047 BRIDGE 6 SN 099-0023 LOC. 3
67100100	MOBILIZATION	L SUM	1	0.16	0.17	0.16	0.17	0.17	0.17
70102620	TRAFFIC CONTROL AND PROTECTION, STANDARD 701501	L SUM	1				0.5	0.5	
70102625	TRAFFIC CONTROL AND PROTECTION, STANDARD 701606	L SUM	1	0.5	0.5				
70200100	NIGHTTIME WORK ZONE LIGHTING	L SUM	1	0.16	0.16	0.17	0.17	0.17	0.17
70400200	RELOCATE TEMPORARY CONCRETE BARRIER	FOOT	30				15	15	
X2502014	SEEDING, CLASS 4A (MODIFIED)	ACRE	0.2				0.1	0.1	
X6700407	ENGINEER'S FIELD OFFICE, TYPE A (D1)	CAL MO	12	2	2	2	2	2	2
X7011015	TRAFFIC CONTROL AND PROTECTION (EXPRESSWAYS)	L SUM	1		0.5	0.5			
Z0007101	CONTAINMENT AND DISPOSAL OF LEAD PAINT CLEANING RESIDUES NO. 1	L SUM	1	1					
Z0007102	CONTAINMENT AND DISPOSAL OF LEAD PAINT CLEANING RESIDUES NO. 2	L SUM	1		1				
Z0007103	CONTAINMENT AND DISPOSAL OF LEAD PAINT CLEANING RESIDUES NO. 3	L SUM	1		1				
Z0007104	CONTAINMENT AND DISPOSAL OF LEAD PAINT CLEANING RESIDUES NO. 4	L SUM	1			1			

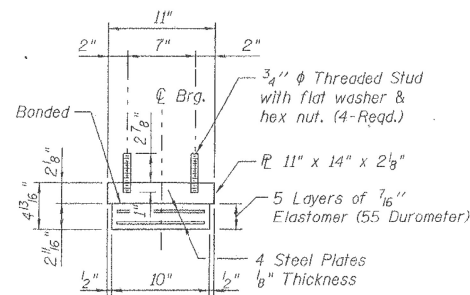
SUMMARY OF QUANTITIES			URBAN TOTAL QUANTITIES 90% FED 10% STATE	CONSTRUCTION TYPE CODE					
CODE NO	ITEM	UNIT		0047 BRIDGE 1 SN 099-0016 LOC. 1	0047 BRIDGE 2 SN 099-0017 LOC. 1	0047 BRIDGE 3 SN 099-0018 LOC. 2	0047 BRIDGE 4 SN 099-0019 LOC. 2	0047 BRIDGE 5 SN 099-0022 LOC. 3	0047 BRIDGE 6 SN 099-0023 LOC. 3
Z0007105	CONTAINMENT AND DISPOSAL OF LEAD PAINT CLEANING RESIDUES NO. 5	L SUM	1					1	
Z0007106	CONTAINMENT AND DISPOSAL OF LEAD PAINT CLEANING RESIDUES NO. 6	L SUM	1						1
Z0010501	CLEANING AND PAINTING STEEL BRIDGE NO. 1	L SUM	1	1					
Z0010502	CLEANING AND PAINTING STEEL BRIDGE NO. 2	L SUM	1		1				
Z0010503	CLEANING AND PAINTING STEEL BRIDGE NO. 3	L SUM	1			1			
Z0010504	CLEANING AND PAINTING STEEL BRIDGE NO. 4	L SUM	1				1		
Z0010505	CLEANING AND PAINTING STEEL BRIDGE NO. 5	L SUM	1					1	
Z0010506	CLEANING AND PAINTING STEEL BRIDGE NO. 6	L SUM	1						1
Z0030850	TEMPORARY INFORMATION SIGNING	SO FT	51.4	25.7	25.7				
Z0064800	SELECTIVE CLEARING	UNIT	6					3	3
Z0076600	TRAINEES	HOURS	500	500					
Z0076604	TRAINEES - TRAINING PROGRAM GRADUATE	HOURS	500	500					

FILE NAME =	USER NAME = rossann	DESIGNED -	REVISED -	STATE OF ILLINOIS DEPARTMENT OF TRANSPORTATION	SUMMARY OF QUANTITIES	F.A.I. RTE.	SECTION	COUNTY	TOTAL SHEETS	SHEET NO.
pw\11dd-pw.bentley.com\PI\DOT\Documents\DOT - Office\District\Projects\0106022\CADD\Design\0106022-sh-300.dwg	PLLOT SCALE = 100.0637' / 1in.	CHECKED -	REVISED -			55	2021-159-BR	WILL	28	3
PLLOT DATE = 12/17/2021	DATE -	REVISED -	REVISED -			CONTRACT NO. 62P81				
						SCALE:	SHEET NO. OF SHEETS	STA.	TO STA.	FED. ROAD DIST. NO. 1 ILLINOIS FED. AID PROJECT



ELEVATION

SECTION A-A

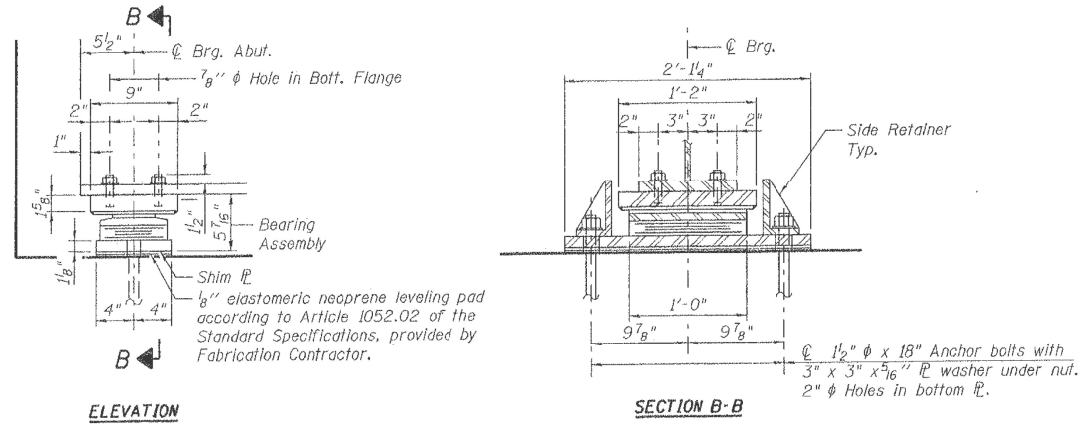


BEARING ASSEMBLY

Note: Shim plates shall not be placed under Bearing Assembly.

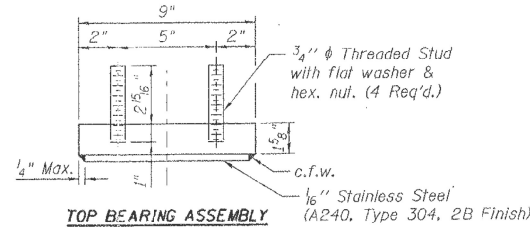
TYPE I ELASTOMERIC EXP. BRG. AT PIERS 1 & 3

(8 Thus)

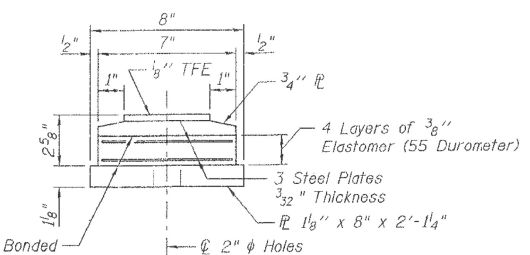


ELEVATION

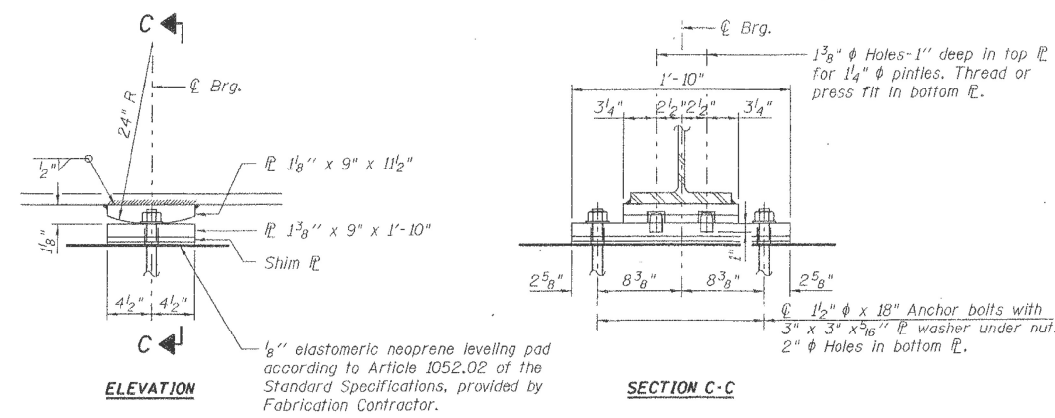
SECTION B-B



TOP BEARING ASSEMBLY



BOTTOM BEARING ASSEMBLY

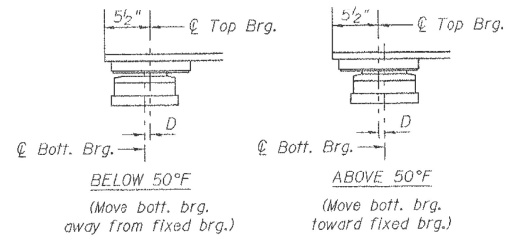


ELEVATION

SECTION C-C

FIXED BEARING AT PIER 2

(4 Thus)



SETTING ANCHOR BOLTS AT EXP. BRG.

D = 1/2 inch per each 100 feet of expansion for every 15 degree temp. change from the normal temp. of 50°F.

TYPE II ELASTOMERIC EXP. BRG. AT S. & N. ABUT.

(8 Thus)

FOR INFORMATION ONLY

MODEL: Default
 FILE: h:\mfe_p\p\uldrctaw_bearng.dwg
 PROJECT: \P\DOT\Documents\DOT Office\Dir\drct_11\Project\11066022\CADD\Drawings\11066022-ahr-1.dwg

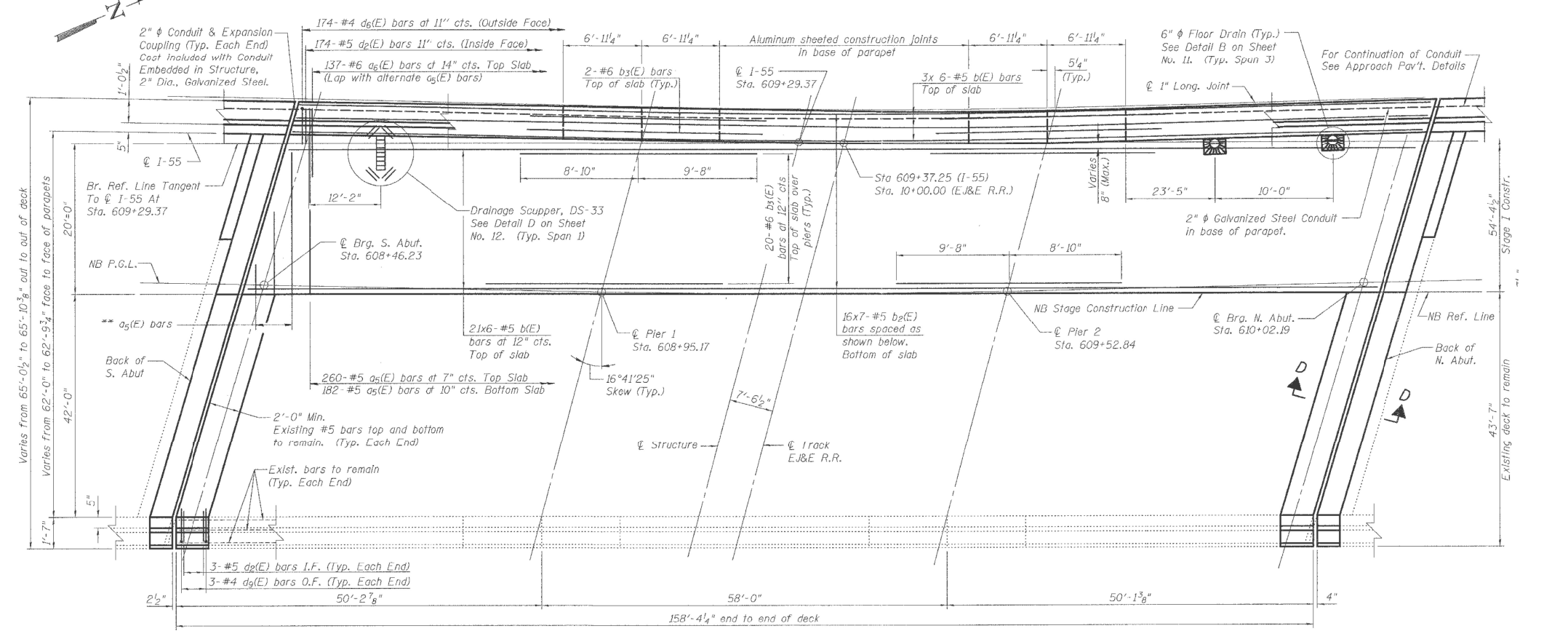
USER NAME = hassan	DESIGNED -	REVISED -
	DRAWN -	REVISED -
PLOT SCALE = 100,0000' / in.	CHECKED -	REVISED -
PLOT DATE = 12/15/2021	DATE -	REVISED -

STATE OF ILLINOIS
DEPARTMENT OF TRANSPORTATION

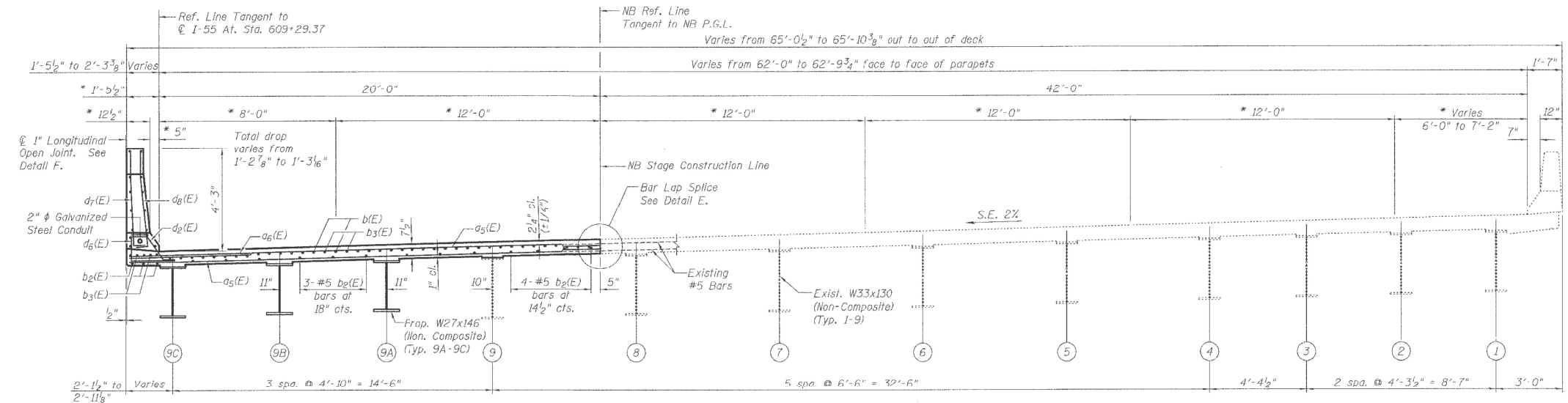
LOCATION 1: BEARING DETAILS
I-55 OVER US ROUTE 30

SCALE: SHEET OF SHEETS STA. TO STA.

F.A.I. RTE.	SECTION	COUNTY	TOTAL SHEETS	SHEET NO.
55	2021-159-BP	WILL	28	8
CONTRACT NO.			62P81	
ILLINOIS FED. AID PROJECT				



PLAN



CROSS SECTION
(Looking North)

* Designates radial dimensions normal to ϕ I-55.

FOR INFORMATION ONLY

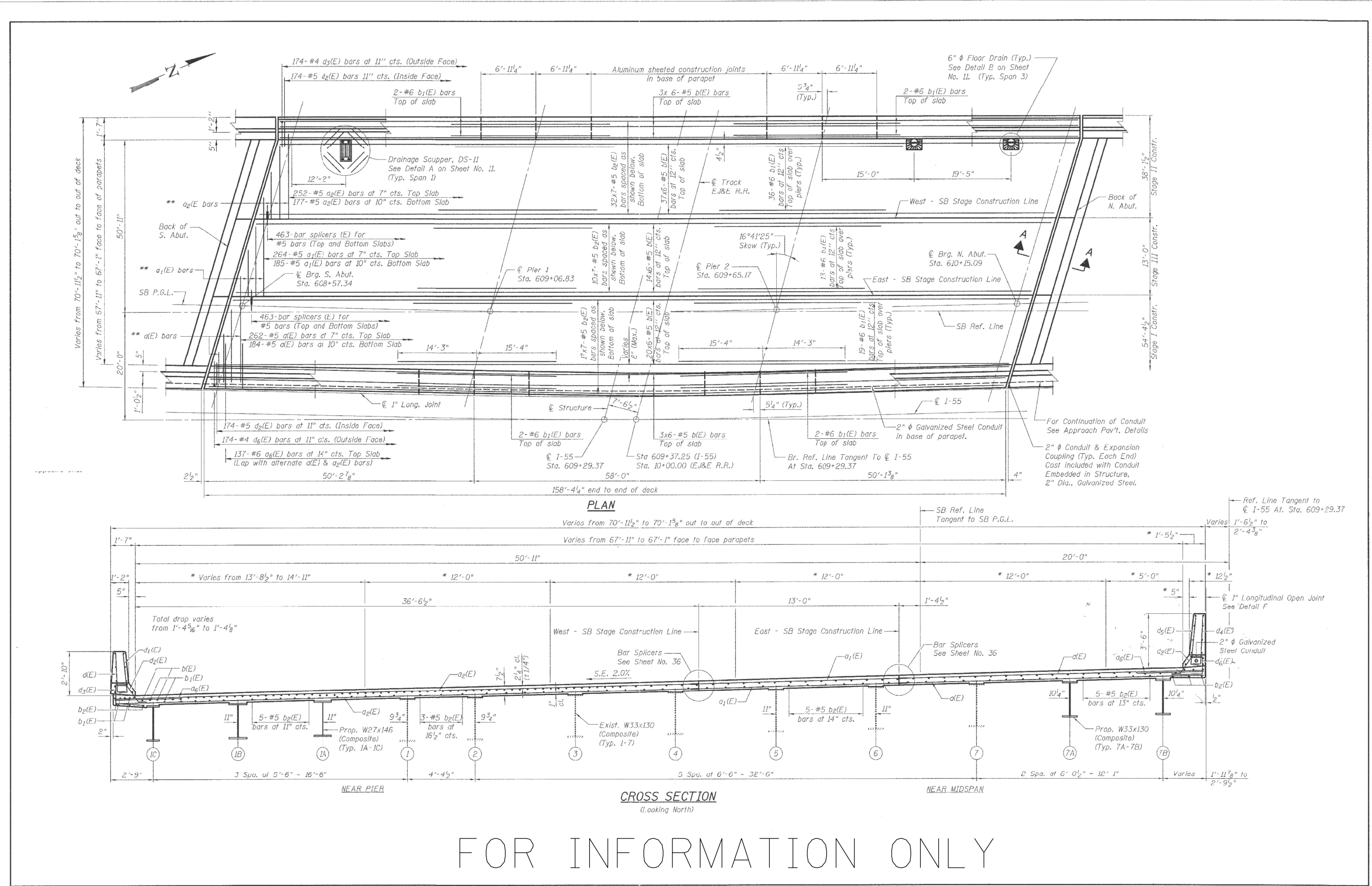
MODEL: Default
 FILE: h:\mfe_p\build\paw_beaufay.com\PIV\DOT\Documents\DOT Office\Drawings\1166022\CADD\Drawings\1166022-Str-1-10-2021.dwg

USER NAME = hassan	DESIGNED -	REVISED -
	DRAWN -	REVISED -
PLOT SCALE = 100,0000' / in.	CHECKED -	REVISED -
PLOT DATE = 12/15/2021	DATE -	REVISED -

STATE OF ILLINOIS
DEPARTMENT OF TRANSPORTATION

LOCATION 2: BRIDGE CROSS SECTION			
I-55 OVER RAILROAD			
SCALE:	SHEET	OF SHEETS	STA. TO STA.

F.A.I. RTE.	SECTION	COUNTY	TOTAL SHEETS	SHEET NO.
55	2021-159-BP	WILL	28	10
CONTRACT NO. 62P81			ILLINOIS FED. AID PROJECT	



FOR INFORMATION ONLY

MODEL: Default
 FILE: 2021-159-BP-Subcontract-beadefy.com\FW\DOT Documents\1DOT Office\Drawings\1166022\CaddData\Design\1166022-Subcontract-beadefy.com

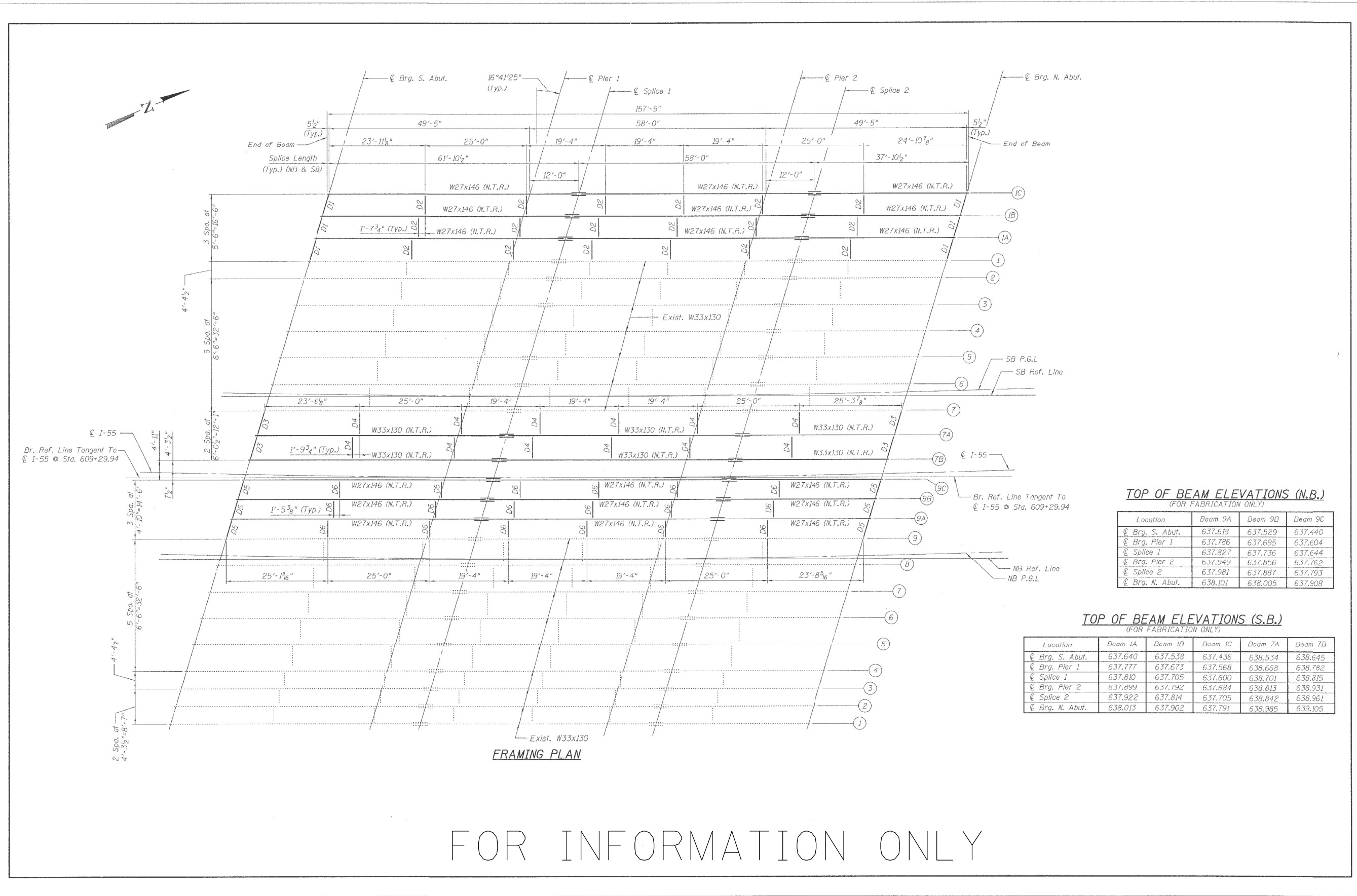
USER NAME = hassan	DESIGNED -	REVISED -
	DRAWN -	REVISED -
PLOT SCALE = 100,0000' / in.	CHECKED -	REVISED -
PLOT DATE = 12/15/2021	DATE -	REVISED -

STATE OF ILLINOIS
DEPARTMENT OF TRANSPORTATION

LOCATION 2: BRIDGE CROSS SECTION
I-55 OVER RAILROAD

SCALE: SHEET OF SHEETS STA. TO STA.

F.A.I. RTE. 55	SECTION 2021-159-BP	COUNTY WILL	TOTAL SHEETS 28	SHEET NO. 11
ILLINOIS FED. AID PROJECT			CONTRACT NO. 62P81	



TOP OF BEAM ELEVATIONS (N.B.)
(FOR FABRICATION ONLY)

Location	Beam 9A	Beam 9B	Beam 9C
℄ Brg. S. Abut.	637.618	637.529	637.440
℄ Brg. Pier 1	637.786	637.695	637.604
℄ Splice 1	637.827	637.736	637.644
℄ Brg. Pier 2	637.949	637.856	637.762
℄ Splice 2	637.981	637.887	637.793
℄ Brg. N. Abut.	638.101	638.005	637.908

TOP OF BEAM ELEVATIONS (S.B.)
(FOR FABRICATION ONLY)

Location	Beam 1A	Beam 1B	Beam 1C	Beam 7A	Beam 7B
℄ Brg. S. Abut.	637.640	637.538	637.436	638.534	638.645
℄ Brg. Pier 1	637.777	637.673	637.568	638.668	638.782
℄ Splice 1	637.810	637.705	637.600	638.701	638.815
℄ Brg. Pier 2	637.899	637.792	637.684	638.813	638.931
℄ Splice 2	637.922	637.814	637.705	638.842	638.961
℄ Brg. N. Abut.	638.013	637.902	637.791	638.985	639.105

FRAMING PLAN

FOR INFORMATION ONLY

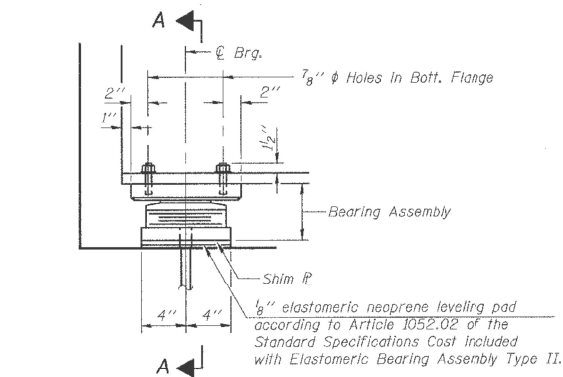
MODEL: Default
 FILE: h:\m\p\p\build\paw_beaufy.com\p\p\DOT\Documents\DOT\Office\Drawings\I-55\2021\CADD\Drawings\I-55\2021-159-BP\2021-159-BP-12.dwg
 PROJECT: I-55 Over Railroad
 DATE: 12/15/2021

USER NAME = hassan	DESIGNED -	REVISED -
	DRAWN -	REVISED -
PLOT SCALE = 100,0000' / in.	CHECKED -	REVISED -
PLOT DATE = 12/15/2021	DATE -	REVISED -

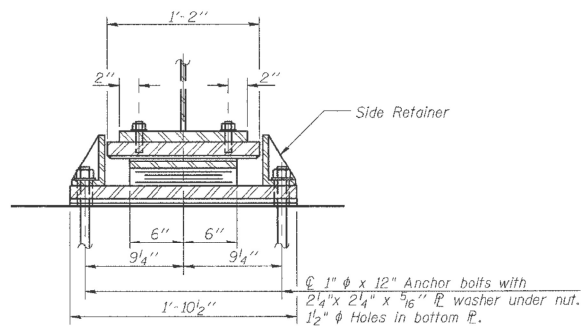
**STATE OF ILLINOIS
DEPARTMENT OF TRANSPORTATION**

LOCATION 2: FRAMING PLANS	
I-55 OVER RAILROAD	
SCALE:	SHEET OF SHEETS STA. TO STA.

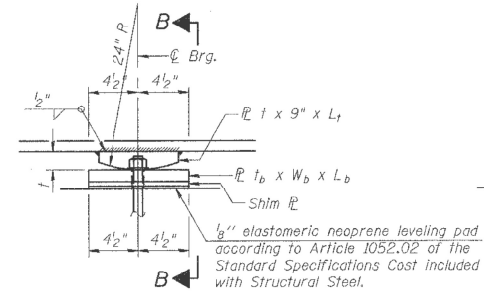
F.A.I. RTE.	SECTION	COUNTY	TOTAL SHEETS	SHEET NO.
55	2021-159-BP	WILL	28	12
ILLINOIS FED. AID PROJECT			CONTRACT NO. 62P81	



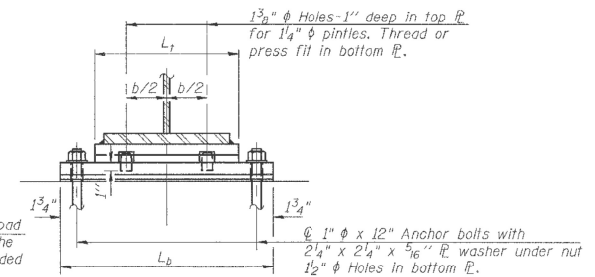
ELEVATION AT N. ABUT. (NB & SB)



SECTION A-A

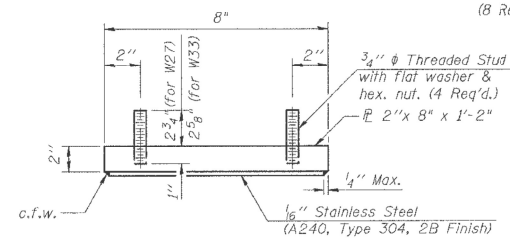


ELEVATION AT PIER 1 (NB & SB)

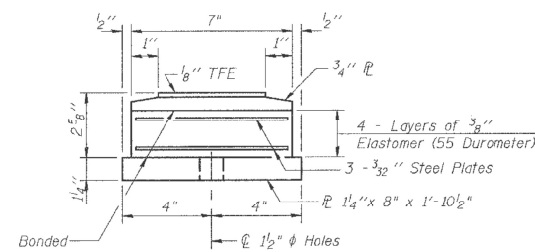


SECTION B-B

TYPE II ELASTOMERIC EXP. BRG.

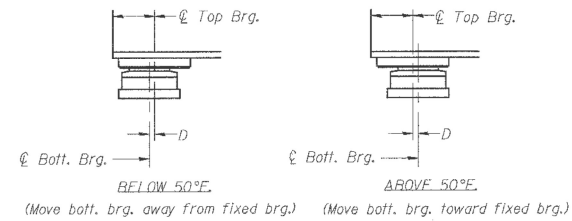


TOP BEARING ASSEMBLY



BOTTOM BEARING ASSEMBLY

FIXED BEARING



SETTING ANCHOR BOLTS AT EXP. BRG.

(D = 1/8" per each 100' of expansion for every 15° temp. change from the normal temp. of 50°F)

FOR INFORMATION ONLY

MODEL: Default
FILE NAME: p:\project-aw-beadley.com\FW\DOT\Documents\DOT Office\Drawings\1166022\CADD\data\Design\1166022-ah-1-16-16.dwg

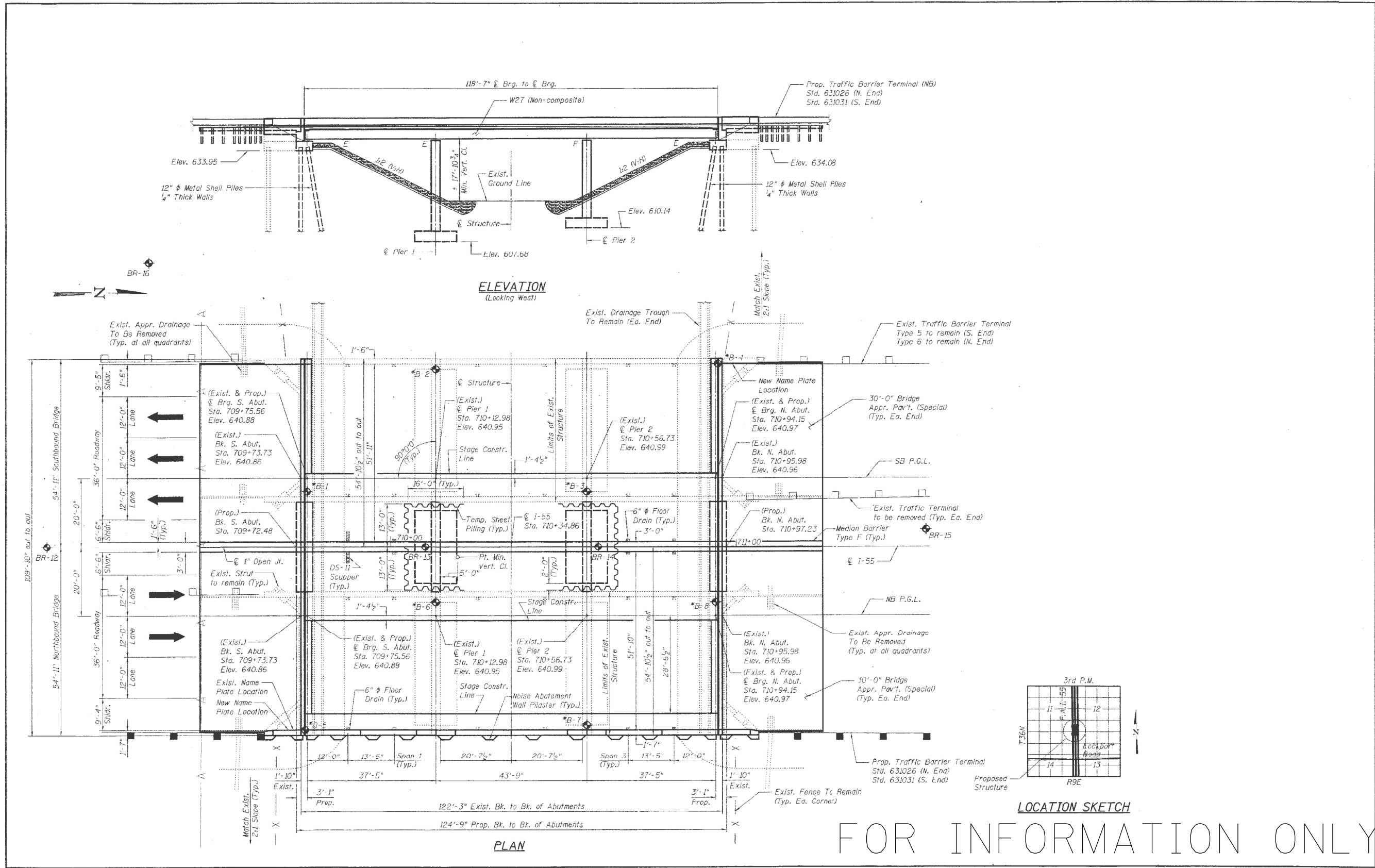
USER NAME = hassan	DESIGNED -	REVISED -
PLOT SCALE = 100,0000' / in.	DRAWN -	REVISED -
PLOT DATE = 12/15/2021	CHECKED -	REVISED -
	DATE -	REVISED -

STATE OF ILLINOIS
DEPARTMENT OF TRANSPORTATION

LOCATION 2: BEARING DETAILS
I-55 OVER RAILROAD

SCALE: SHEET OF SHEETS STA. TO STA.

F.A.I. RTE.	SECTION	COUNTY	TOTAL SHEETS	SHEET NO.
55	2021-159-BP	WILL	28	15
CONTRACT NO. 62P81				
ILLINOIS FED. AID PROJECT				



FOR INFORMATION ONLY

MODEL: Default
 FILE: 12/15/2021 10:00:00 AM
 PROJECT: I-55 Over Abandoned Railroad
 DRAWING: I-55 OVER ABANDONED RAILROAD
 SHEET: 16 OF 28
 DATE: 12/15/2021

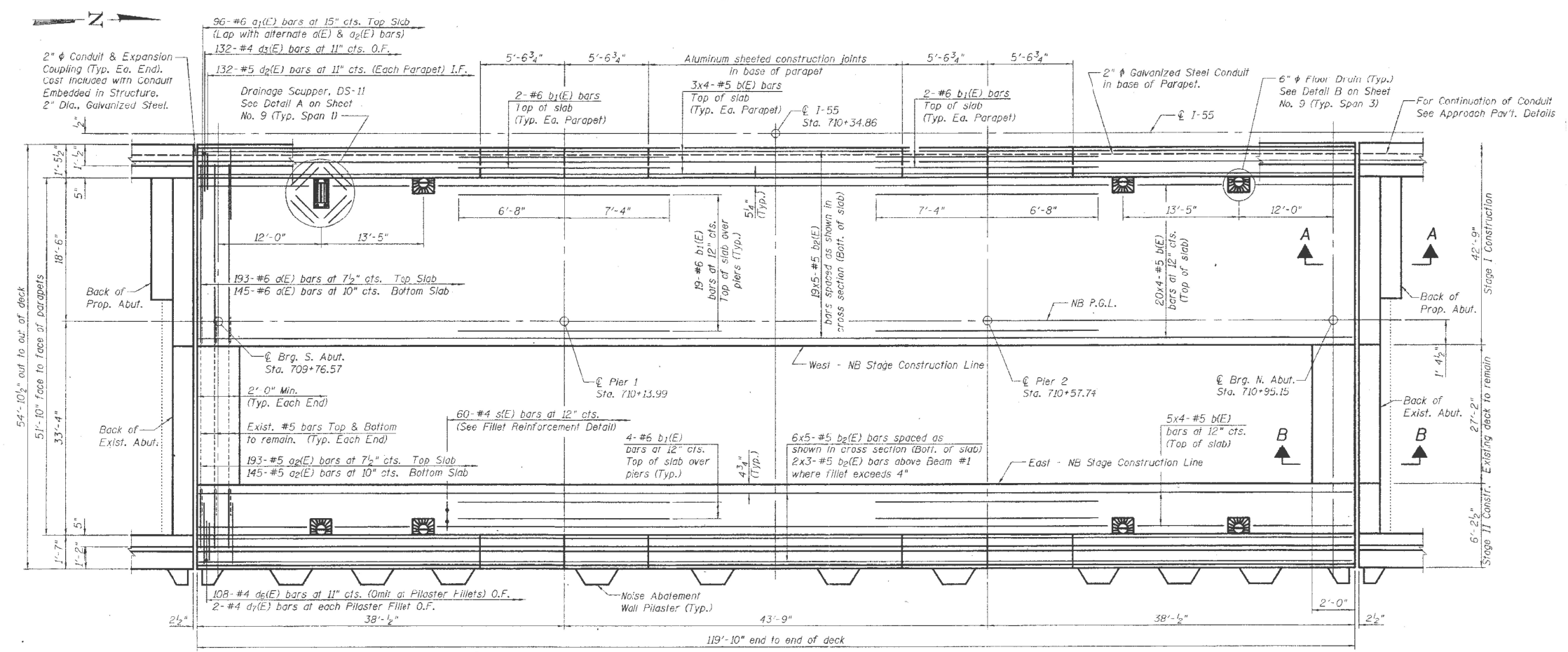
USER NAME = hassan	DESIGNED -	REVISED -
	DRAWN -	REVISED -
PLOT SCALE = 100,000' / in.	CHECKED -	REVISED -
PLOT DATE = 12/15/2021	DATE -	REVISED -

STATE OF ILLINOIS
DEPARTMENT OF TRANSPORTATION

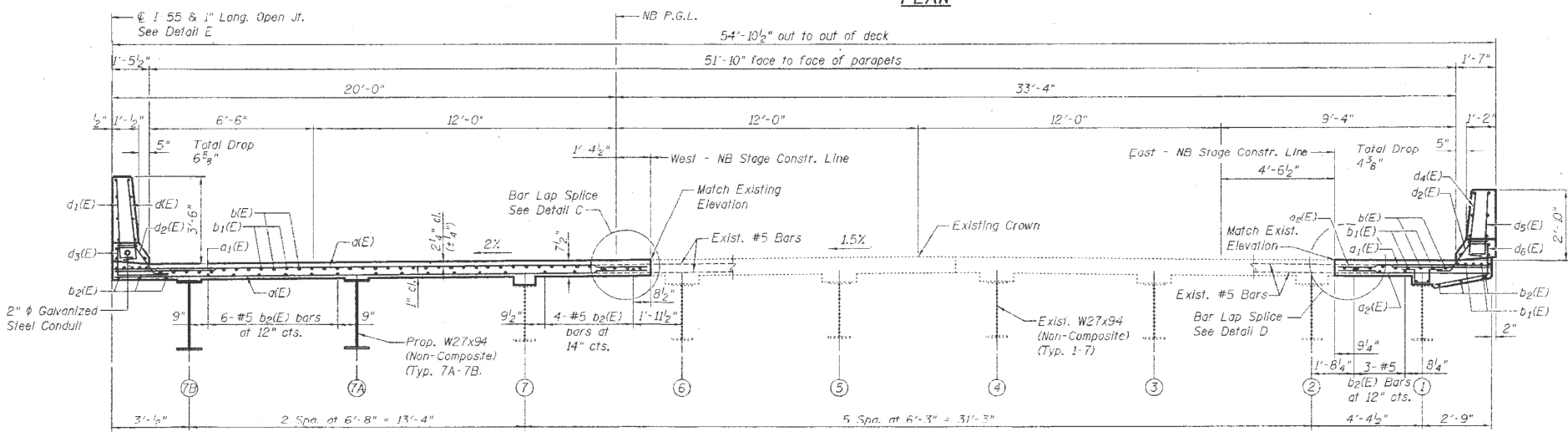
LOCATION 3: PLANS AND ELEVATION
I-55 OVER ABANDONED RAILROAD

SCALE: SHEET OF SHEETS STA. TO STA.

F.A.I. RTE.	SECTION	COUNTY	TOTAL SHEETS	SHEET NO.
55	2021-159-BP	WILL	28	16
CONTRACT NO. 62P81			ILLINOIS FED. AID PROJECT	



PLAN



CROSS SECTION
(Looking North)

FOR INFORMATION ONLY

MODEL: Default
 FILE: h:\mfe_p\p\illdot\paw\bea\fy.com\p\illdot\Documents\DOT Office\Drawings\1166022\CADD\Drawings\1166022-Str-1-10.dwg
 PROJECT: 1166022-Str-1-10.dwg

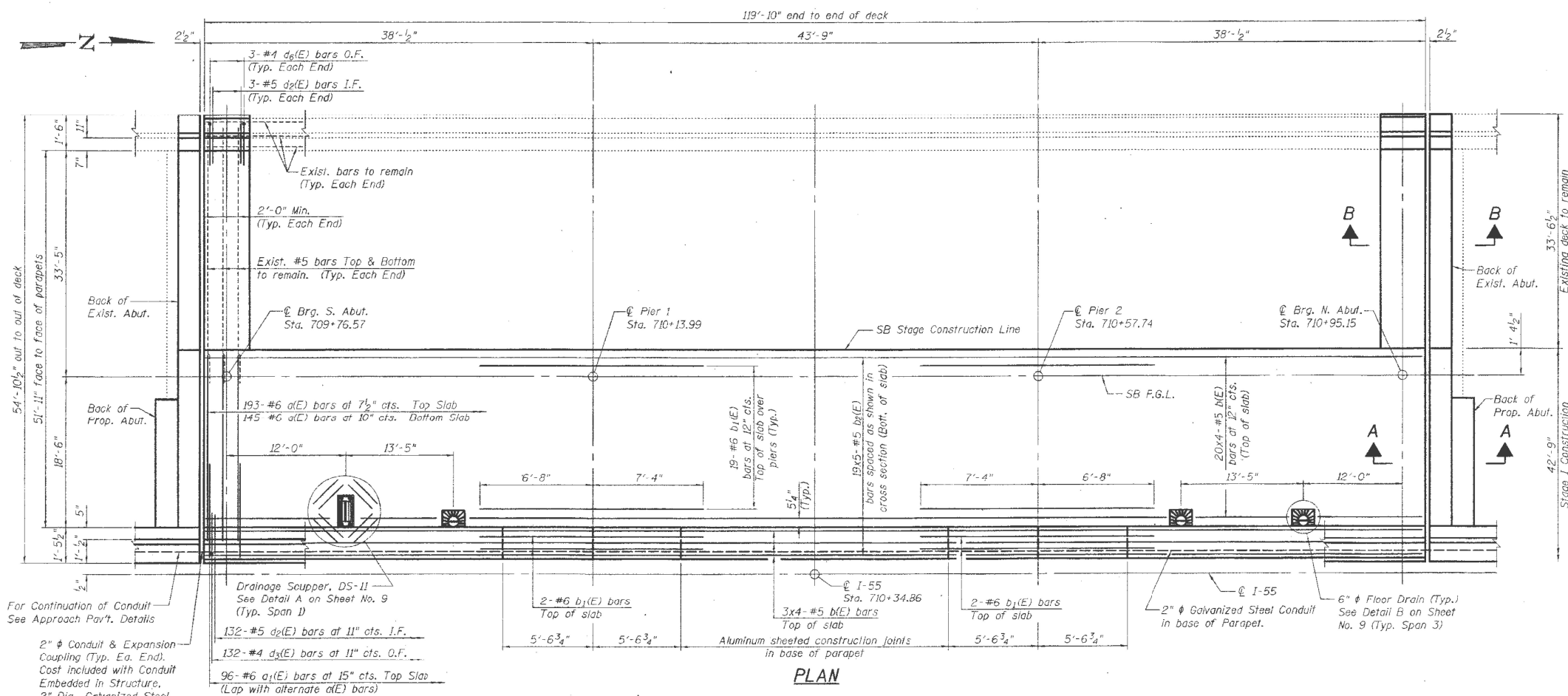
USER NAME = hassan	DESIGNED -	REVISED -
PLOT SCALE = 100,0000' / in.	DRAWN -	REVISED -
PLOT DATE = 12/15/2021	CHECKED -	REVISED -
	DATE -	REVISED -

STATE OF ILLINOIS
DEPARTMENT OF TRANSPORTATION

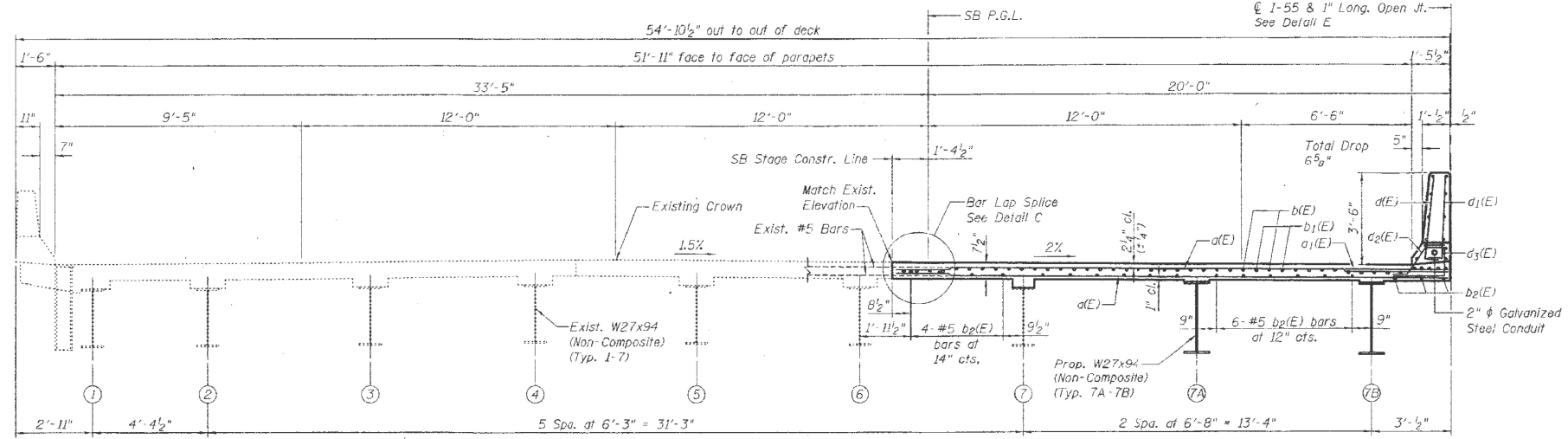
LOCATION 3: BRIDGE CROSS SECTION
I-55 OVER ABANDONED RAILROAD

SCALE: SHEET OF SHEETS STA. TO STA.

F.A.I. RTE.	SECTION	COUNTY	TOTAL SHEETS	SHEET NO.
55	2021-159-BP	WILL	28	17
CONTRACT NO. 62P81			ILLINOIS FED. AID PROJECT	



PLAN



CROSS SECTION
(Looking North)

FOR INFORMATION ONLY

MODEL: Default
 FILE: h:\mfe_p\build\paw_benefits.com\PIV\DOT\Documents\DOT Office\Drawings\1106022\CADD\data\Design\1106022-struct-bas.dwg

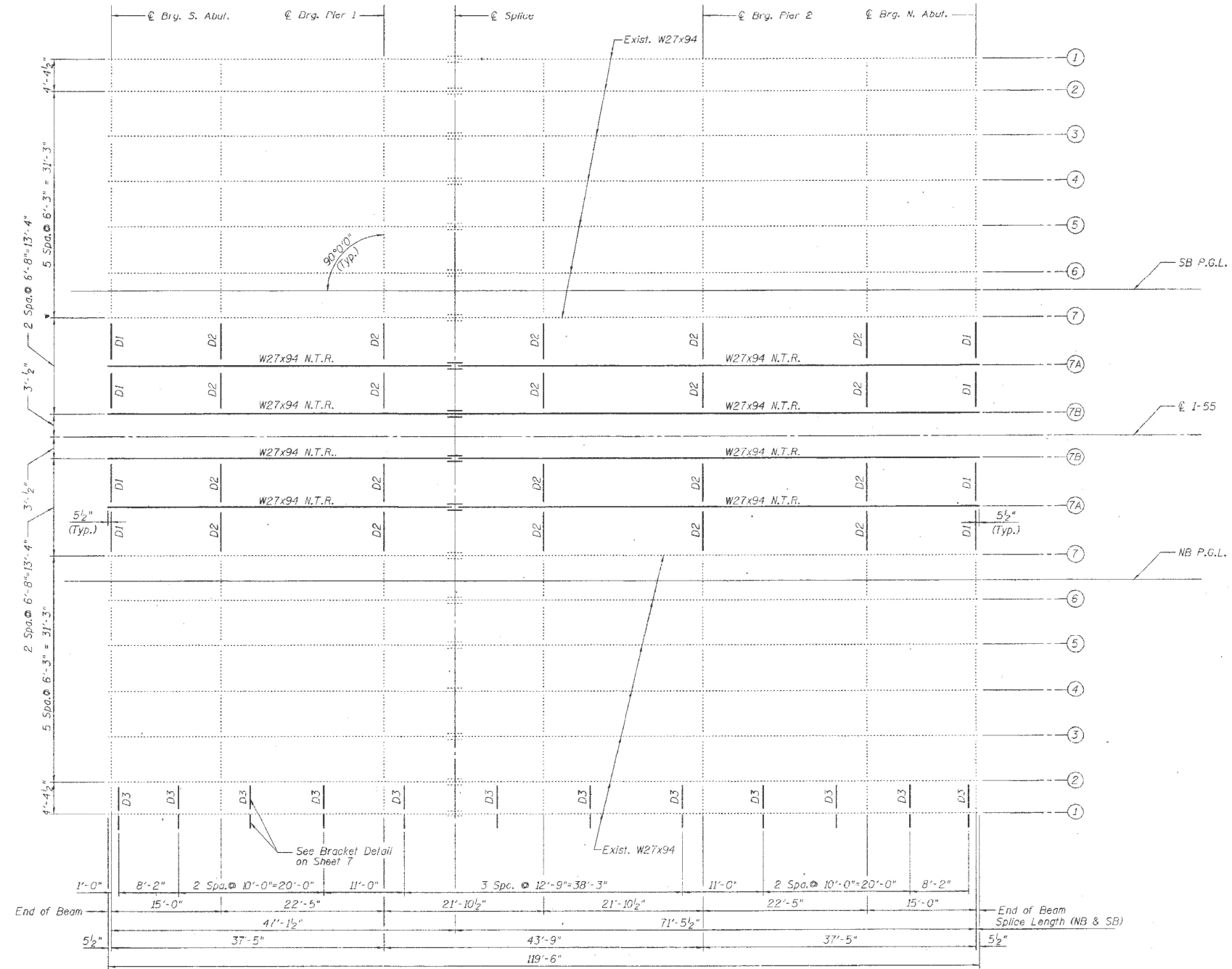
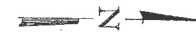
USER NAME = hassan	DESIGNED -	REVISED -
	DRAWN -	REVISED -
PLOT SCALE = 100,0000' / in.	CHECKED -	REVISED -
PLOT DATE = 12/15/2021	DATE -	REVISED -

STATE OF ILLINOIS
DEPARTMENT OF TRANSPORTATION

LOCATION 3: BRIDGE CROSS SECTION
I-55 OVER ABANDONED RAILROAD

SCALE: SHEET OF SHEETS STA. TO STA.

F.A.I. RTE.	SECTION	COUNTY	TOTAL SHEETS	SHEET NO.
55	2021-159-BP	WILL	28	18
CONTRACT NO. 62P81			ILLINOIS FED. AID PROJECT	



FOR INFORMATION ONLY

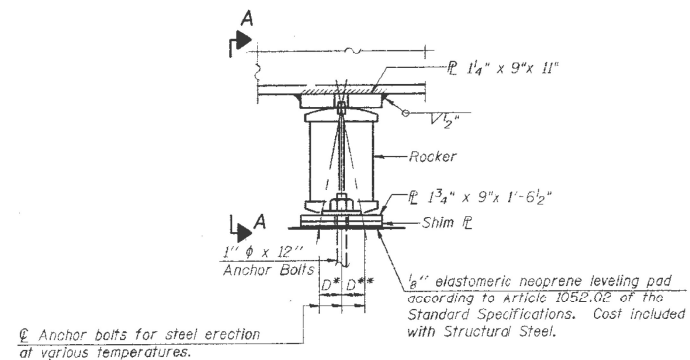
MODEL: Default
 FILE: h:\mfc\p\build\aw-beam\p\Project\DOT Documents\DOT Office\Sheet\Project\DOT\106022\CaddData\Design\106022-Str-1-10.dwg
 PLOT DATE = 12/15/2021

USER NAME = hassan	DESIGNED -	REVISED -
PLOT SCALE = 100,0000' / in.	DRAWN -	REVISED -
PLOT DATE = 12/15/2021	CHECKED -	REVISED -
	DATE -	REVISED -

STATE OF ILLINOIS
DEPARTMENT OF TRANSPORTATION

LOCATION 3: FRAMING PLAN	
I-55 OVER ABANDONED RAILROAD	
SCALE:	SHEET OF SHEETS STA. TO STA.

F.A.I. RTE.	SECTION	COUNTY	TOTAL SHEETS	SHEET NO.
55	2021-159-BP	WILL	28	19
CONTRACT NO. 62P81			ILLINOIS FED. AID PROJECT	

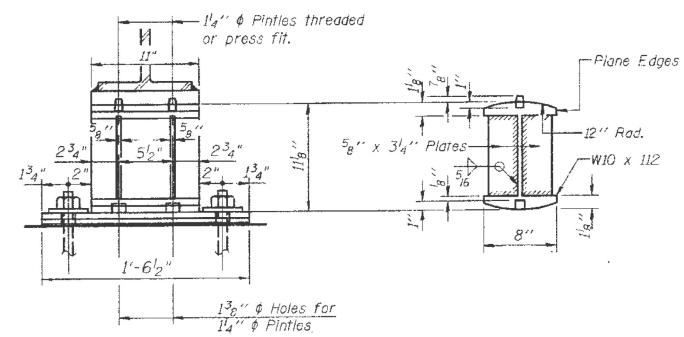


ELEVATION AT PIER 1 (NB & SB)

(2 Req'd NB, 2 Req'd SB)

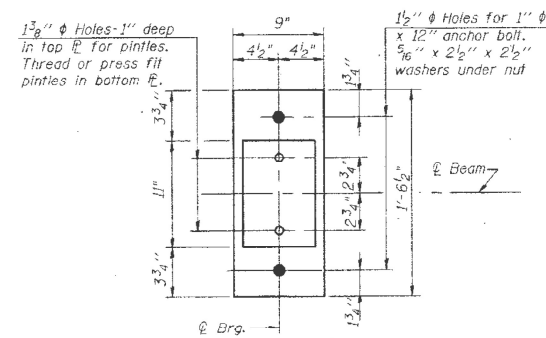
* D = 1/8" / 100 ft. of exp. for every 15° below the normal temp. of 50°F.

** D = 1/8" / 100 ft. of exp. for every 15° above the normal temp. of 50°F.



SECTION A-A

DETAIL OF ROCKER



PLAN

FOR INFORMATION ONLY

MODEL: Default
FILE NAME: p:\project\aw_bearings.com\PIV\DOT\Documents\DOT Office\Drawings\Project\1066022\CADD\data\Design\1066022-ah-1-10-2021.dwg

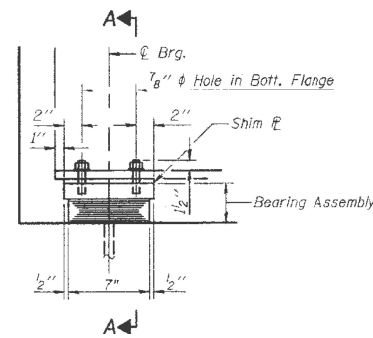
USER NAME = hassan	DESIGNED -	REVISED -
	DRAWN -	REVISED -
PLOT SCALE = 100,0000' / in.	CHECKED -	REVISED -
PLOT DATE = 12/15/2021	DATE -	REVISED -

STATE OF ILLINOIS
DEPARTMENT OF TRANSPORTATION

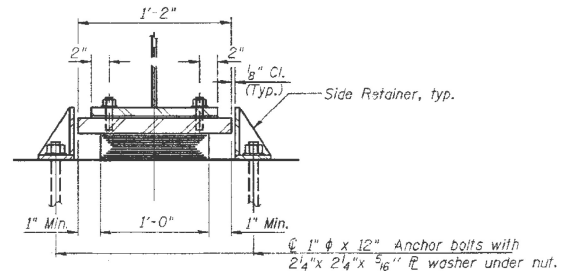
LOCATION 3: BEARING DETAILS
I-55 OVER ABANDONED RAILROAD

SCALE: SHEET OF SHEETS STA. TO STA.

F.A.I. RTE.	SECTION	COUNTY	TOTAL SHEETS	SHEET NO.
55	2021-159-BP	WILL	28	20
			CONTRACT NO. 62P81	
ILLINOIS FED. AID PROJECT				



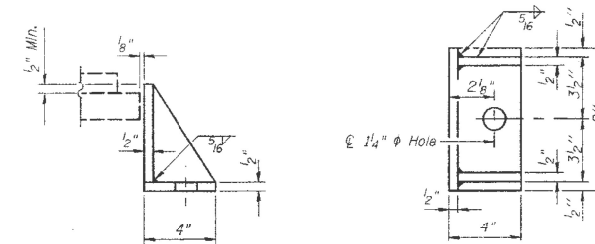
ELEVATION AT N. ABUT. (NB & SB)



SECTION A-A

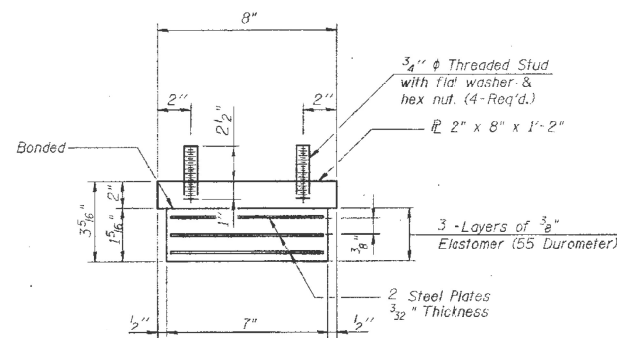
TYPE I ELASTOMERIC EXP. BRG.

(2 Req'd NB, 2 Req'd SB)



SIDE RETAINER

(Equivalent rolled angle with stiffeners will be allowed in lieu of welded plates. Weight Included with Structural Steel)



BEARING ASSEMBLY

(Shim plates shall not be placed under Bearing Assembly)

FOR INFORMATION ONLY

MODEL: Default
 FILE NAME: p:\project\aw_bearings.com\PIV\DOT\Documents\DOT Office\District 11\Project\11066022\CADD\data\Design\11066022-ah-bearings.dwg

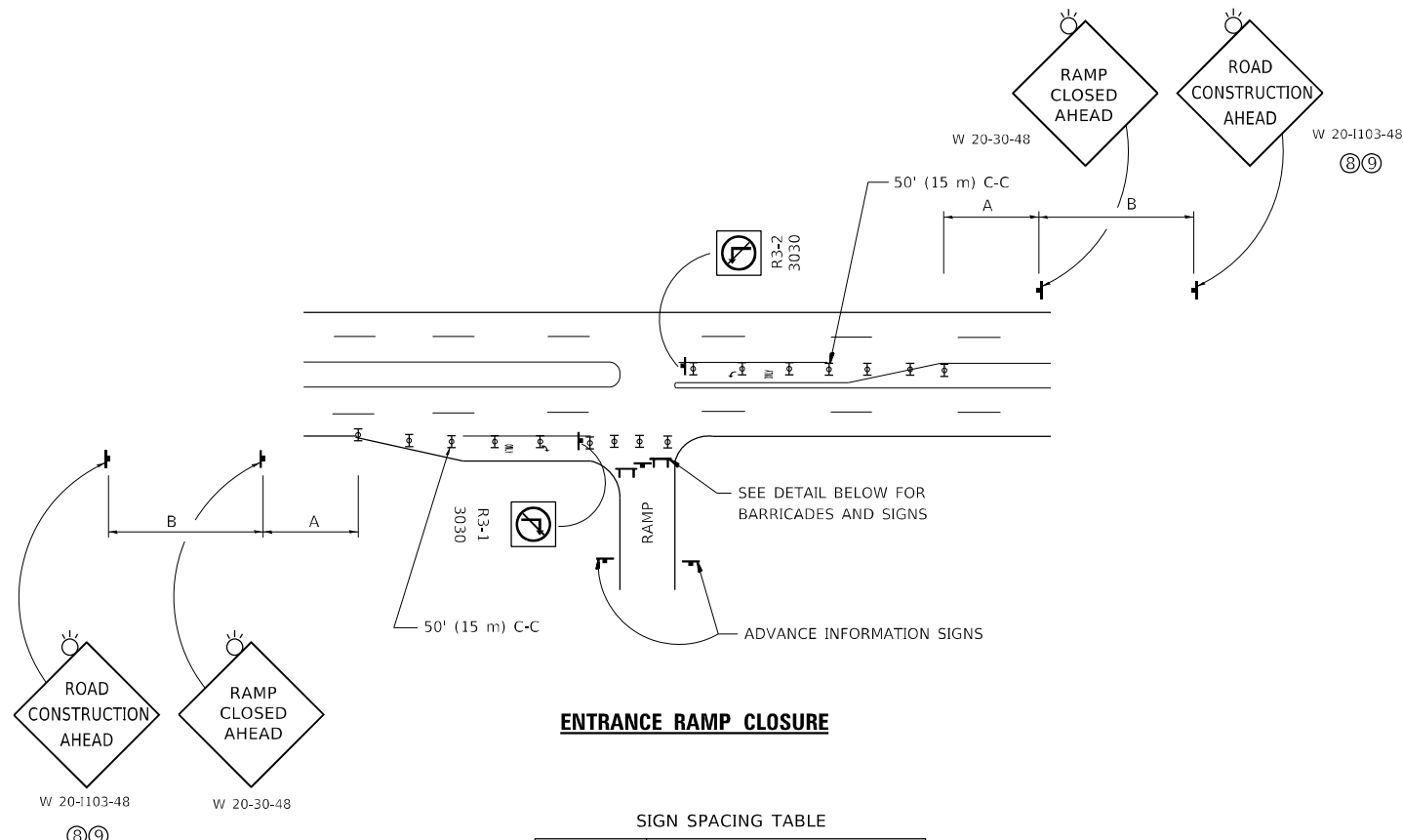
USER NAME = hassan	DESIGNED -	REVISED -
PLOT SCALE = 100,0000' / in.	DRAWN -	REVISED -
PLOT DATE = 12/15/2021	CHECKED -	REVISED -
	DATE -	REVISED -

**STATE OF ILLINOIS
DEPARTMENT OF TRANSPORTATION**

**LOCATION 3: BEARING DETAILS
I-55 OVER ABANDONED RAILROAD**

SCALE: SHEET OF SHEETS STA. TO STA.

F.A.I. RTE.	SECTION	COUNTY	TOTAL SHEETS	SHEET NO.
55	2021-159-BP	WILL	28	21
CONTRACT NO. 62P81			ILLINOIS FED. AID PROJECT	

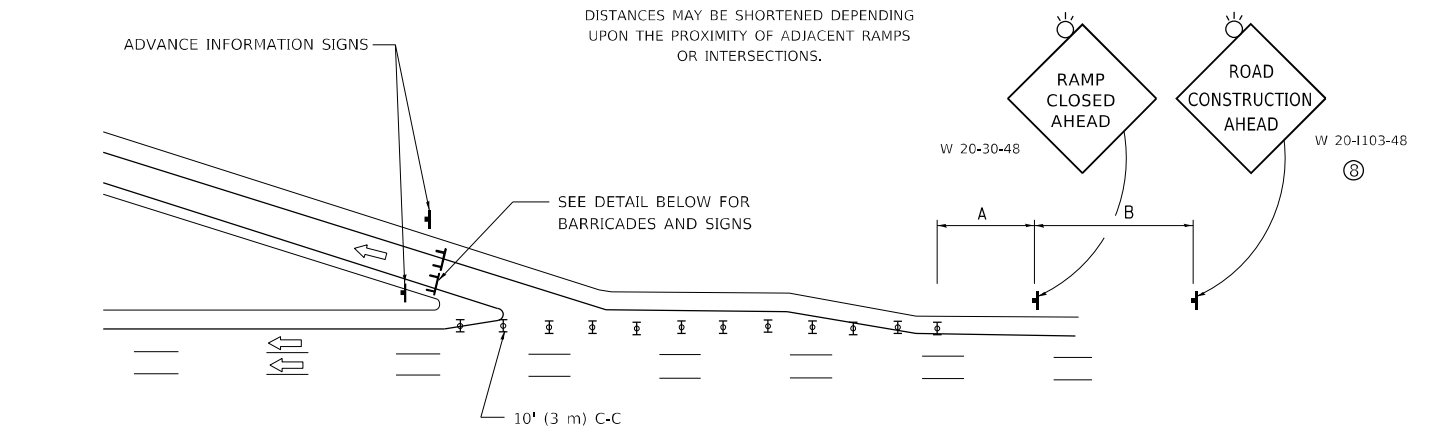


ENTRANCE RAMP CLOSURE

SIGN SPACING TABLE

FACILITY	DISTANCE BETWEEN SIGNS	
	A	B
EXPRESSWAY >24 HOURS	1000' (300 m)	1500' (450 m)
EXPRESSWAY ≤24 HOURS	500' (150 m)	500' (150 m)
ARTERIAL 55 MPH	500' (150 m)	500' (150 m)
ARTERIAL 50-45 MPH	350' (100 m)	350' (100 m)
ARTERIAL <45 MPH	200' (60 m)	200' (60 m)

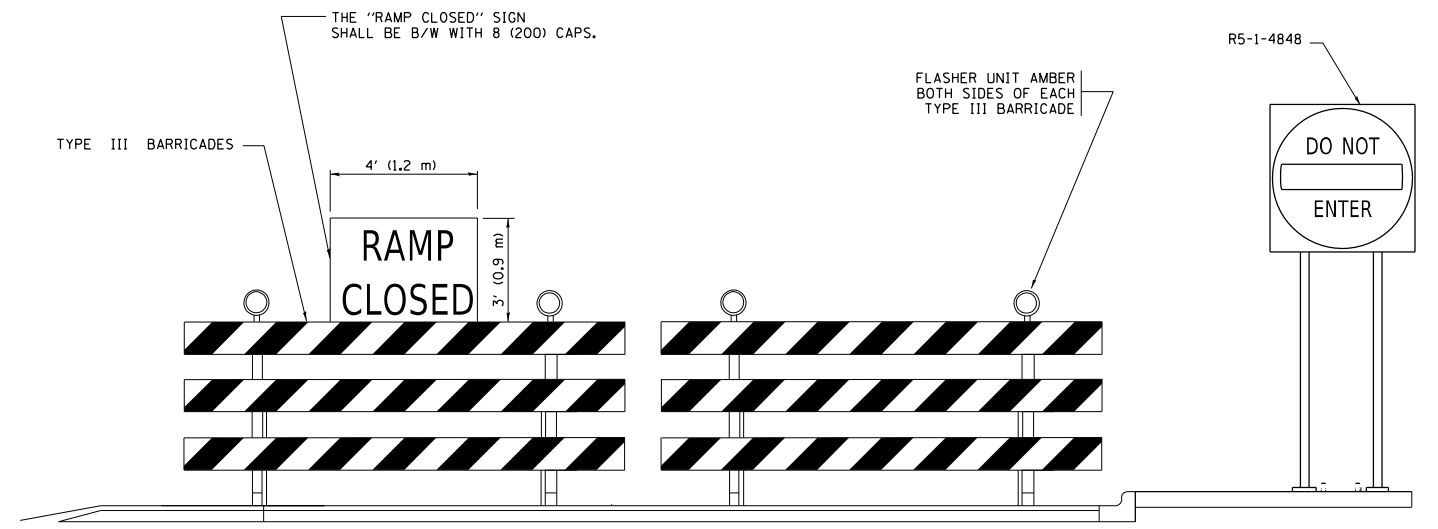
DISTANCES MAY BE SHORTENED DEPENDING UPON THE PROXIMITY OF ADJACENT RAMPS OR INTERSECTIONS.



EXIT RAMP CLOSURE

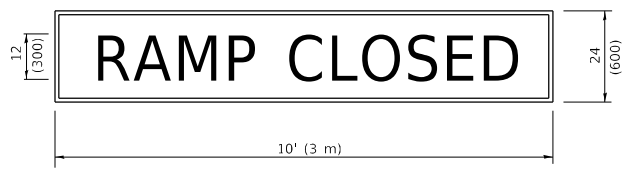
SYMBOLS

- ▬ TYPE II BARRICADE OR DRUM
- ▬ TYPE III BARRICADE WITH 2 FLASHING LIGHTS



DETAIL FOR REQUIRED BARRICADES & SIGNS

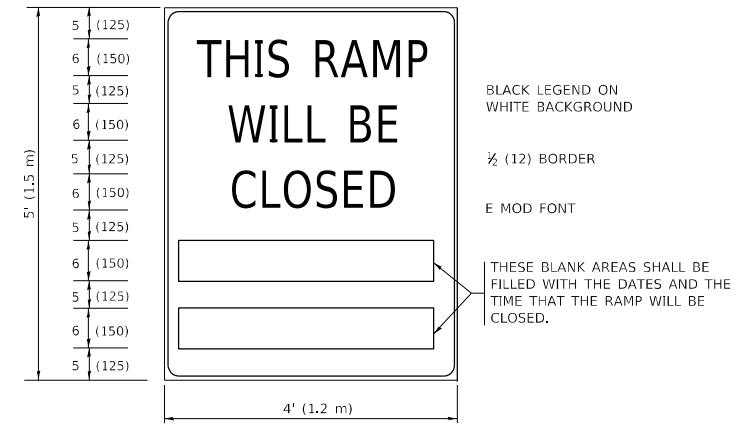
RAMP CLOSURE ADVANCE WARNING SIGN



BLACK LEGEND ON ORANGE BACKGROUND MOUNTED DIAGONALLY
E MOD FONT
1 (25) BORDER

THESE SIGNS ARE REQUIRED ON ALL THE EXIT GUIDE SIGNS FOR EXIT RAMPS THAT WILL BE CLOSED FOR MORE THAN FOUR (4) CONSECUTIVE DAYS.

RAMP CLOSURE ADVANCE INFORMATION SIGN



BLACK LEGEND ON WHITE BACKGROUND

1/2 (12) BORDER

E MOD FONT

THESE BLANK AREAS SHALL BE FILLED WITH THE DATES AND THE TIME THAT THE RAMP WILL BE CLOSED.

THESE SIGNS ARE REQUIRED ON BOTH SIDES OF THE RAMP, MINIMUM OF 1 WEEK IN ADVANCE OF THE CLOSURE.

THESE SIGNS SHALL BE FABRICATED AND PAID FOR ACCORDING TO THE TEMPORARY INFORMATION SIGNING SPECIAL PROVISION

GENERAL NOTES:

- 1 CONES MAY BE SUBSTITUTED FOR DRUMS OR TYPE II BARRICADES DURING DAY OPERATIONS. CONES SHALL BE A MINIMUM OF 28 (700) HIGH.
- 2 VERTICAL BARRICADES SHALL NOT BE USED FOR RAMP CLOSURES.
- 3 A FLAGGER SHALL BE POSITIONED AT EACH CLOSED RAMP THAT IS OPEN TO CONSTRUCTION VEHICLES, PRECEDED BY A W20-7 FLAGGER WARNING SIGN.
- 4 ALL ROUTE MARKERS AND TRAILBLAZER ASSEMBLIES WHICH DIRECT MOTORISTS TO A CLOSED ENTRANCE RAMP SHALL BE COVERED WHEN THE RAMP IS CLOSED FOR MORE THAN FOUR (4) DAYS.
- 5 THE SIGNING AND BARRICADING WHICH IS REQUIRED BY THIS DETAIL SHALL BE INCLUDED IN THE COST OF TRAFFIC CONTROL AND PROTECTION (EXPRESSWAYS).
- 6 AUTHORIZATION FROM THE DISTRICT'S BUREAU OF TRAFFIC IS REQUIRED FOR ALL RAMP CLOSURES.
- 7 THE RAMP CLOSURE ADVANCE INFORMATION SIGNS SHALL BE ERECTED IF THE CLOSURE TIME EXCEEDS TWENTY-FOUR (24) HOURS. ADDITIONAL ADVANCE WARNING SIGNS ON EXIT GUIDE SIGNING WILL BE REQUIRED FOR EXIT RAMP CLOSURES THAT EXCEED FOUR (4) DAYS IN LENGTH.
- 8 ROAD CONSTRUCTION AHEAD SIGNS MAY BE OMITTED WHEN THIS DETAIL IS USED IN CONJUNCTION WITH OTHER TRAFFIC CONTROL THAT ALREADY INCLUDES A ROAD CONSTRUCTION AHEAD SIGN.
- 9 ARTERIAL ROAD CONSTRUCTION AHEAD SIGNS SHALL BE INSTALLED ON THE LEFT SIDE OF TRAFFIC IF THE MEDIAN IS MORE THAN 10 FT WIDE.

ALL DIMENSIONS ARE IN INCHES (MILLIMETERS) UNLESS OTHERWISE SHOWN.

MODEL: Default
FILE: \\nafe\p\project-new\bea\p\com\p\indot\documents\indot\office\shirley\project\1166022\cadd\data\design\drfs\drfs.dgn

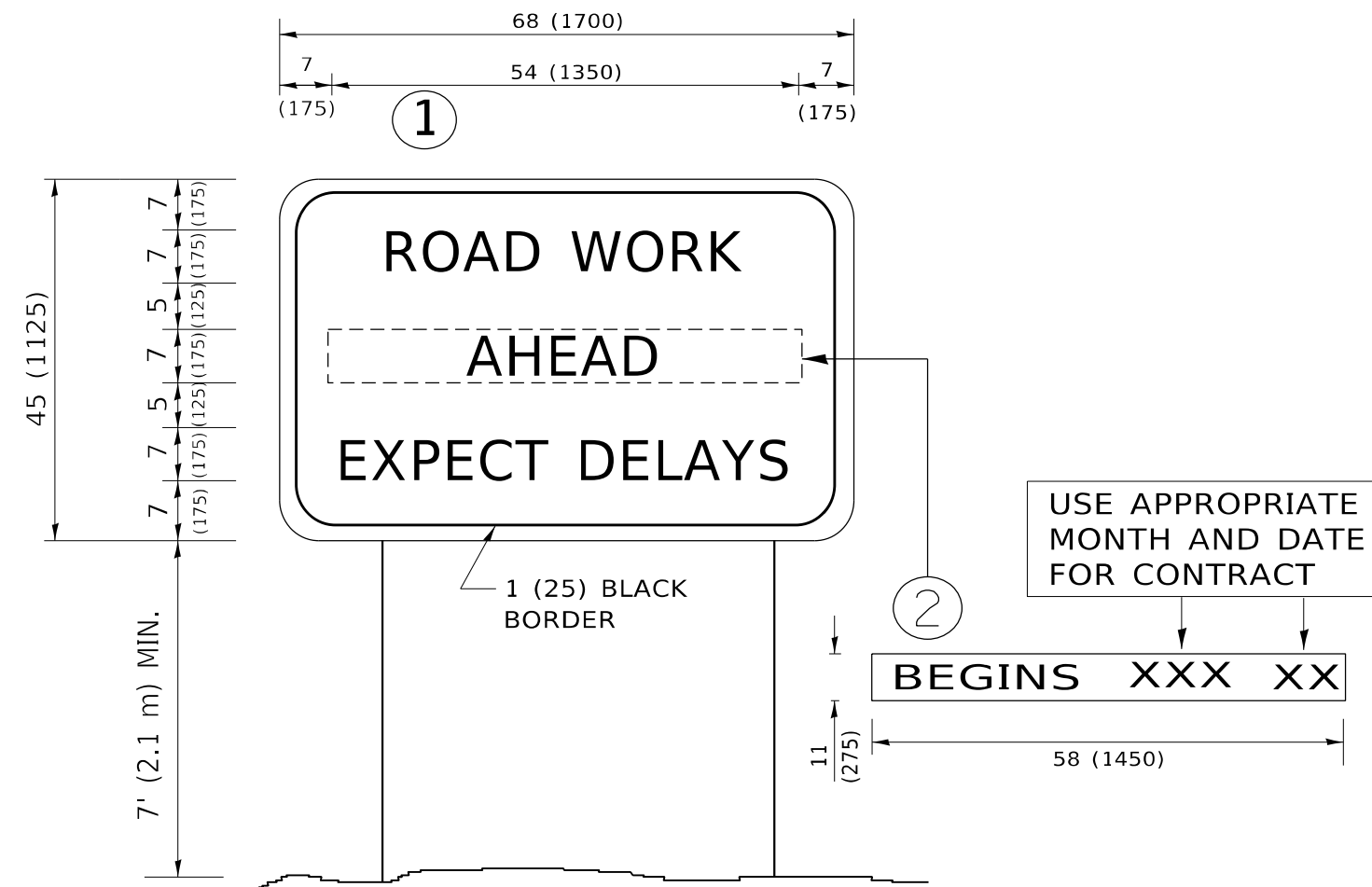
USER NAME = hassan	DESIGNED - D.W.S.	REVISED - S.P.B._01-07
PLOT SCALE = 100,0000' / in.	CHECKED -	REVISED - S.P.B._12-09
PLOT DATE = 12/15/2021	DATE - 02-83	REVISED - M.D._06-13
		REVISED - M.D._01-18

**STATE OF ILLINOIS
DEPARTMENT OF TRANSPORTATION**

**ENTRANCE_AND_EXIT_RAMP
CLOSURE_DETAILS**

SCALE: NONE SHEET 1 OF 1 SHEETS STA. TO STA.

F.A.I. RTE.	SECTION	COUNTY	TOTAL SHEETS	SHEET NO.
55	2021-159-BP	WILL	28	23
TC-08		CONTRACT NO. 62P81		
ILLINOIS		FED. AID PROJECT		



NOTES:

1. USE BLACK LETTERING ON ORANGE BACKGROUND.
2. ERECT SIGNS IN ADVANCE OF THE LOCATION FOR THE "ROAD CONSTRUCTION AHEAD" SIGN AT LOCATIONS AS DIRECTED BY THE ENGINEER.
3. ERECT SIGN ① WITH INSTALLED PANEL ② ONE WEEK PRIOR TO THE START OF CONSTRUCTION.
4. REMOVE PANEL ② SOON AFTER THE START OF CONSTRUCTION.
5. SEE SPECIAL PROVISION FOR "TEMPORARY INFORMATION SIGNING" FOR ADDITIONAL INFORMATION.
6. ONE SIGN ASSEMBLY EQUALS 25.70 SQ. FT. (2.3 SQ. M.)
7. SHALL BE PAID FOR AS TEMPORARY INFORMATION SIGNING.

ALL DIMENSIONS ARE IN INCHES (MILLIMETERS) UNLESS OTHERWISE SHOWN.

MODEL: Default
 FILE NAME: p:\project\paw_bentley.com\P\I\DOT\Documents\DOT Office\Dir\rdet_1\Project\106622\CADD\data\Design\BtES.dgn

USER NAME = hassan	DESIGNED -	REVISED - R. MIRS 09-15-97
	DRAWN -	REVISED - R. MIRS 12-11-97
PLOT SCALE = 100,0000 ' / in.	CHECKED -	REVISED - T. RAMMACHER 02-02-99
PLOT DATE = 12/15/2021	DATE -	REVISED - C. JUCIUS 01-31-07

**STATE OF ILLINOIS
DEPARTMENT OF TRANSPORTATION**

**ARTERIAL ROAD
INFORMATION SIGN**

SCALE: NONE SHEET 1 OF 1 SHEETS STA. TO STA.

F.A.I. RTE.	SECTION	COUNTY	TOTAL SHEETS	SHEET NO.
55	2021-159-BP	WILL	28	28
TC-22			CONTRACT NO. 62P81	
ILLINOIS FED. AID PROJECT				