

SUMMARY OF QUANTITIES

LOCATION OF WORK: FAP 749 / (IL 133)
 RURAL 2 LANE
 COUNTY: DOUGLAS
 STA. 61+44.00
 TO
 STA. 509+75.00

 FUNDING BREAKOUT: 80% FED
 20% STATE

 CONSTRUCTION CODE: 0005

CODE NO	ITEM	UNIT	TOTAL QUANTITY
35800100	PREPARATION OF BASE	SQ YD	60.0
40600290	BITUMINOUS MATERIALS (TACK COAT)	POUND	88,618.0
40600370	LONGITUDINAL JOINT SEALANT	FOOT	43,359.0
40600990	TEMPORARY RAMP	SQ YD	267.0
40604052	HOT-MIX ASPHALT SURFACE COURSE, IL-9.5, MIX "C", N70	TON	7,829.0
40604062	HOT-MIX ASPHALT SURFACE COURSE, IL-9.5, MIX "D", N70	TON	2,682.0
40604162	POLYMERIZED HOT-MIX ASPHALT SURFACE COURSE, IL-9.5, MIX "D", N70	TON	2,682.0
40800025	BITUMINOUS MATERIALS (PRIME COAT)	POUND	135.0
40800029	BITUMINOUS MATERIALS (TACK COAT)	POUND	1,917.0
40800050	INCIDENTAL HOT-MIX ASPHALT SURFACING	TON	374.0
44000155	HOT-MIX ASPHALT SURFACE REMOVAL, 1 1/2"	SQ YD	189,701.0
44201851	CLASS D PATCHES, TYPE II, 17 INCH	SQ YD	122.0
44201855	CLASS D PATCHES, TYPE III, 17 INCH	SQ YD	104.0
48102100	AGGREGATE WEDGE SHOULDER, TYPE B	TON	940.0
60300305	FRAMES AND LIDS TO BE ADJUSTED	EACH	1.0



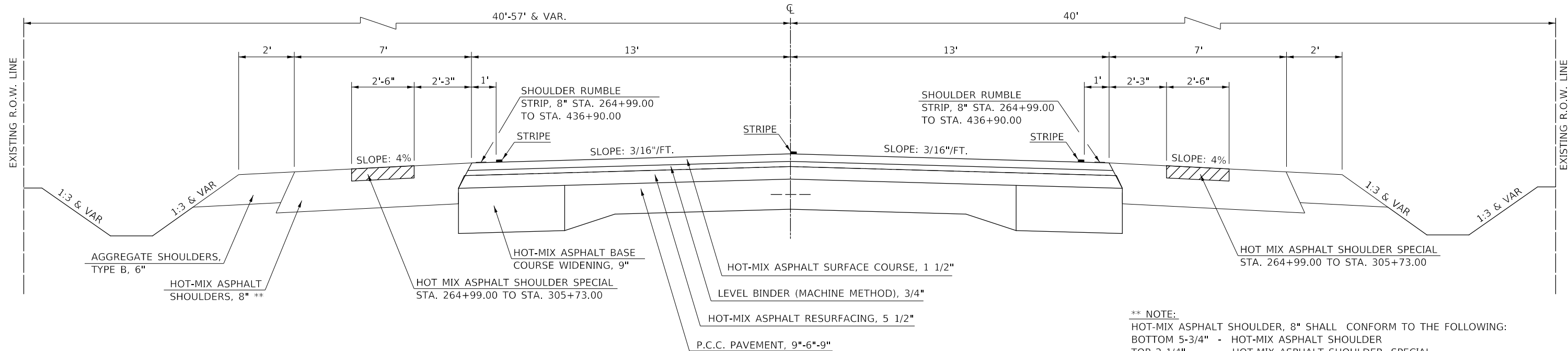
* SPECIALTY ITEM

MODEL: \\MODEL\MAMES
 FILE: \\MAILS_Plan\Illinois\pawbentley.com\PI\DOT\Documents\DOT_Offices\DHrdr: S:\Projects\DOT\70B03\CADD\DATA\CAD\Sheets\DOT\70B03-RT-S00.dgn

USER NAME = woodst PLOT SCALE = 40,0000 ' / in. PLOT DATE = 12/8/2021	DESIGNED - DRAWN - CHECKED - DATE -	REVISED - REVISED - REVISED - REVISED -	STATE OF ILLINOIS DEPARTMENT OF TRANSPORTATION	SUMMARY OF QUANTITIES	F.A.P. RTE. 749	SECTION 120RS-4	COUNTY DOUGLAS	TOTAL SHEETS 57	SHEET NO. 4
SCALE: NONE SHEET 1 OF 4 SHEETS STA. TO STA.				ILLINOIS FED. AID PROJECT CONTRACT NO. 70B03					

F EXISTING TYPICAL CROSS SECTION

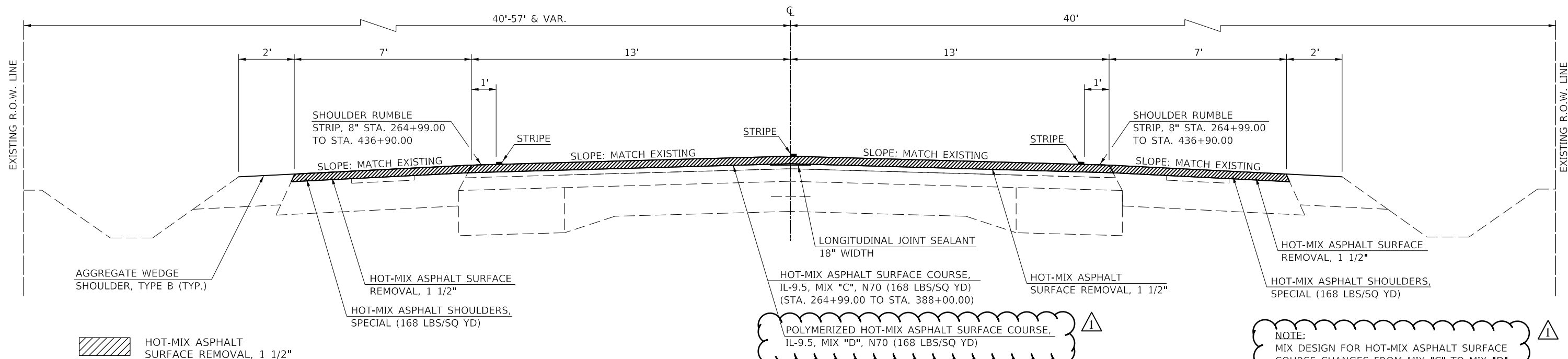
	STATION	TO	STATION	
(C)	264+99.00		436+90.00	(H)
(H)	447+33.00		460+33.00	(G)
(G)	490+15.60		505+62.00	(I)



**** NOTE:**
 HOT-MIX ASPHALT SHOULDER, 8" SHALL CONFORM TO THE FOLLOWING:
 BOTTOM 5-3/4" - HOT-MIX ASPHALT SHOULDER
 TOP 2-1/4" - HOT-MIX ASPHALT SHOULDER, SPECIAL
 ENTIRE SHOULDER SHALL BE PAID FOR AS HOT-MIX ASPHALT SHOULDER, 8"

6 PROPOSED TYPICAL CROSS SECTION

	STATION	TO	STATION	
(3)	264+99.00		436+90.00	(8)
(8)	447+33.00		460+33.00	(7)
(7)	490+15.60		505+62.00	(9)



NOTE:
 MIX DESIGN FOR HOT-MIX ASPHALT SURFACE COURSE CHANGES FROM MIX "C" TO MIX "D" AT STA. 388+00.00

USER NAME = eaglinga	DESIGNED -	REVISED -	
	DRAWN -	REVISED -	
PLOT SCALE = 40,0000' / in.	CHECKED -	REVISED -	
PLOT DATE = 2/14/2022	DATE -	REVISED -	

**STATE OF ILLINOIS
DEPARTMENT OF TRANSPORTATION**

TYPICAL CROSS SECTIONS

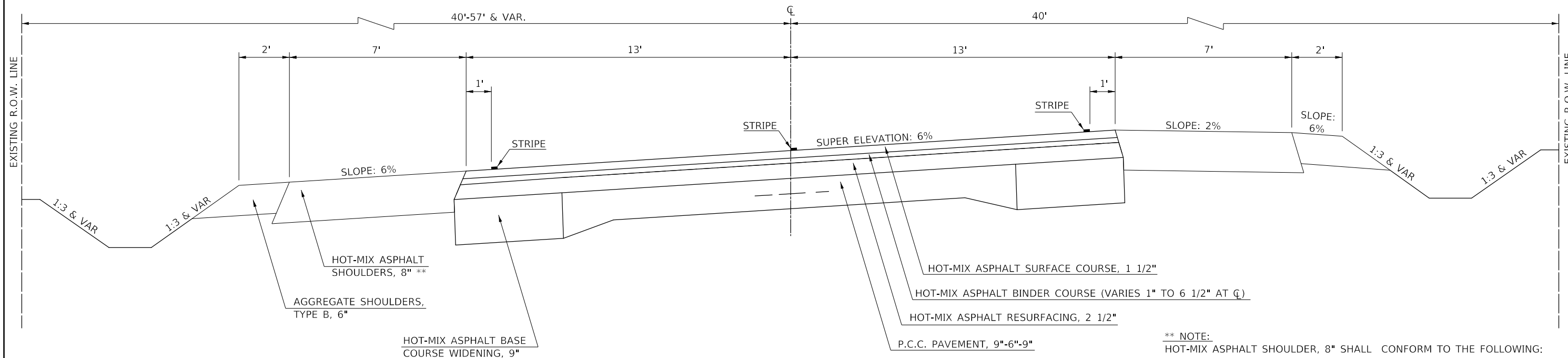
SCALE: NONE SHEET 6 OF 9 SHEETS STA. TO STA.

F.A.P. RTE.	SECTION	COUNTY	TOTAL SHEETS	SHEET NO.
749	120RS-4	DOUGLAS	57	13
CONTRACT NO. 70B03				
ILLINOIS FED. AID PROJECT				

(G) EXISTING TYPICAL CROSS SECTION

STATION TO STATION
 (F) 460+33.00 490+15.60 (F)

STATION EQUATION:
 STA. 476+60.67 (BK) =
 STA. 488+87.90 (AH)

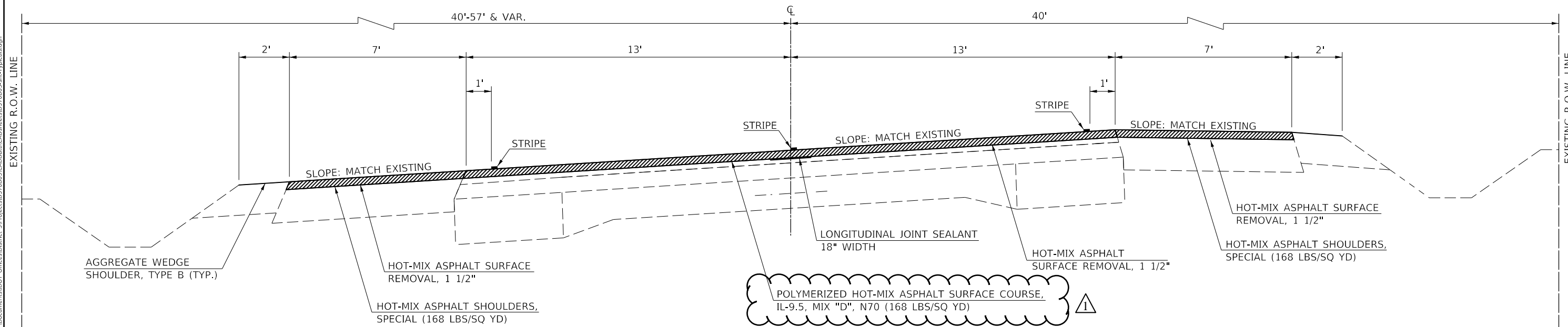


**** NOTE:**
 HOT-MIX ASPHALT SHOULDER, 8" SHALL CONFORM TO THE FOLLOWING:
 BOTTOM 5-3/4" - HOT-MIX ASPHALT SHOULDER
 TOP 2-1/4" - HOT-MIX ASPHALT SHOULDER, SPECIAL
 ENTIRE SHOULDER SHALL BE PAID FOR AS HOT-MIX ASPHALT SHOULDER, 8"

(7) PROPOSED TYPICAL CROSS SECTION

STATION TO STATION
 (6) 460+33.00 490+15.60 (6)

STATION EQUATION:
 STA. 476+60.67 (BK) =
 STA. 488+87.90 (AH)



HOT-MIX ASPHALT SURFACE REMOVAL, 1 1/2"

MODEL: \\MODEL\NAME: FILE: \\MAILS: \paw\illinois\paw\benley.com\PI\DOT\Documents\DOT_Offices\Bharat: S:\Projects\0570803\CADD\data\CADD\sheet\0570803-rh-typical.dgn

USER NAME = eaglinga	DESIGNED -	REVISED -
PLOT SCALE = 40.0000' / in.	DRAWN -	REVISED -
PLOT DATE = 2/14/2022	CHECKED -	REVISED -
	DATE -	REVISED -

**STATE OF ILLINOIS
 DEPARTMENT OF TRANSPORTATION**

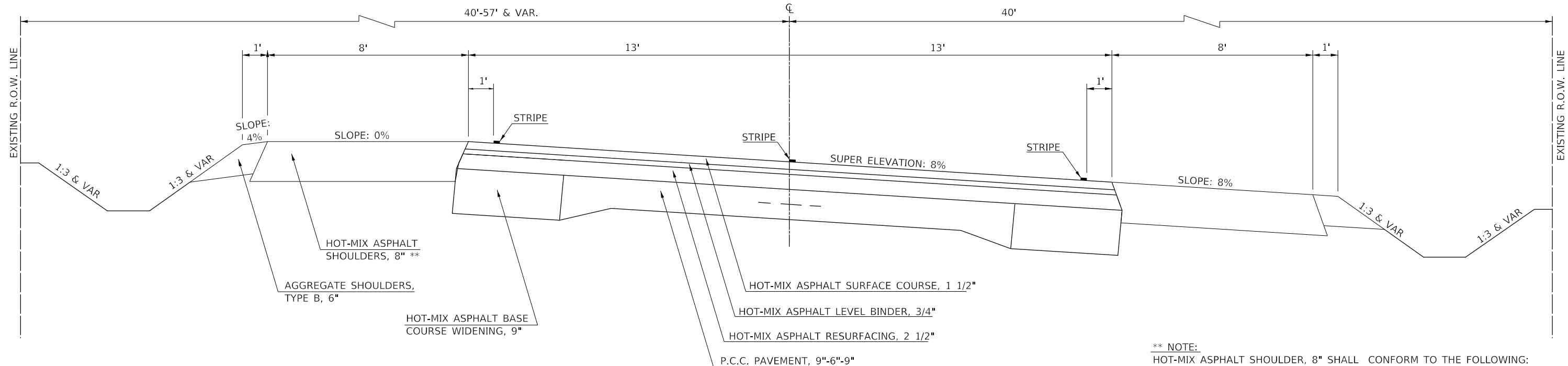
TYPICAL CROSS SECTIONS

SCALE: NONE SHEET 7 OF 9 SHEETS STA. TO STA.

F.A.P. RTE.	SECTION	COUNTY	TOTAL SHEETS	SHEET NO.
749	120RS-4	DOUGLAS	57	14
CONTRACT NO. 70B03				
ILLINOIS FED. AID PROJECT				

(H) EXISTING TYPICAL CROSS SECTION

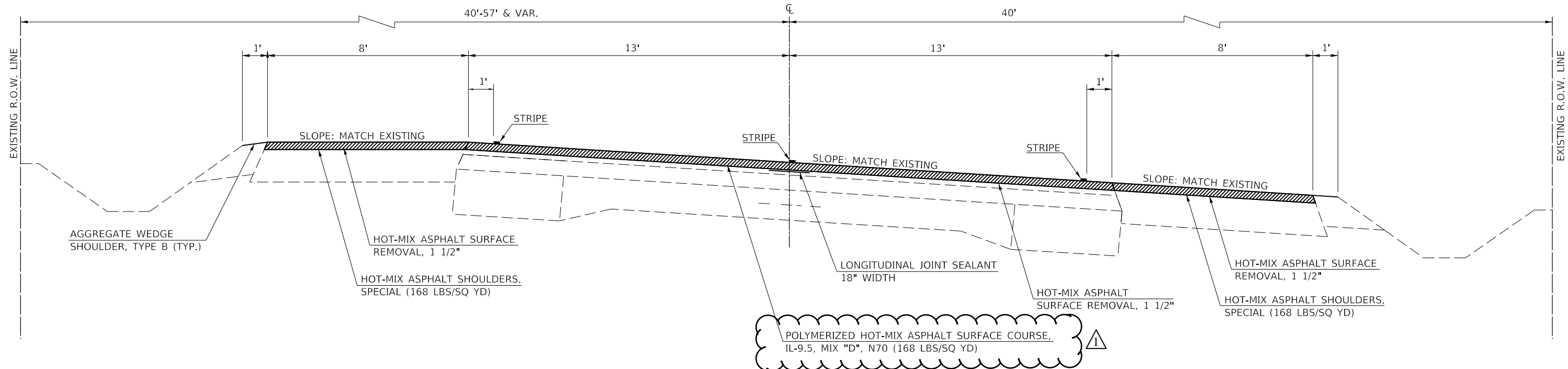
STATION TO STATION
 (F) 436+90.00 (F) 447+33.00 (F)



**** NOTE:**
 HOT-MIX ASPHALT SHOULDER, 8" SHALL CONFORM TO THE FOLLOWING:
 BOTTOM 5-3/4" - HOT-MIX ASPHALT SHOULDER
 TOP 2-1/4" - HOT-MIX ASPHALT SHOULDER, SPECIAL
 ENTIRE SHOULDER SHALL BE PAID FOR AS HOT-MIX ASPHALT SHOULDER, 8"

(8) PROPOSED TYPICAL CROSS SECTION

STATION TO STATION
 (6) 436+90.00 (6) 447+33.00 (6)



HOT-MIX ASPHALT SURFACE REMOVAL, 1 1/2"

**STATE OF ILLINOIS
 DEPARTMENT OF TRANSPORTATION**

TYPICAL CROSS SECTIONS

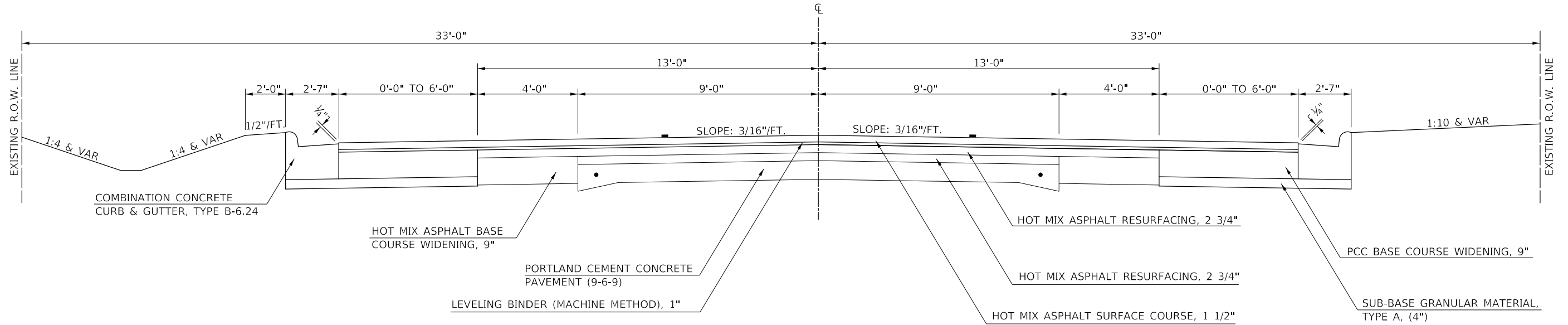
USER NAME = eaglinga	DESIGNED -	REVISED -
PLOT SCALE = 40.0000' / in.	DRAWN -	REVISED -
PLOT DATE = 2/14/2022	CHECKED -	REVISED -
	DATE -	REVISED -

SCALE: NONE SHEET 8 OF 9 SHEETS STA. TO STA.

F.A.P. RTE.	SECTION	COUNTY	TOTAL SHEETS	SHEET NO.
749	120RS-4	DOUGLAS	57	15
CONTRACT NO. 70B03				
ILLINOIS FED. AID PROJECT				

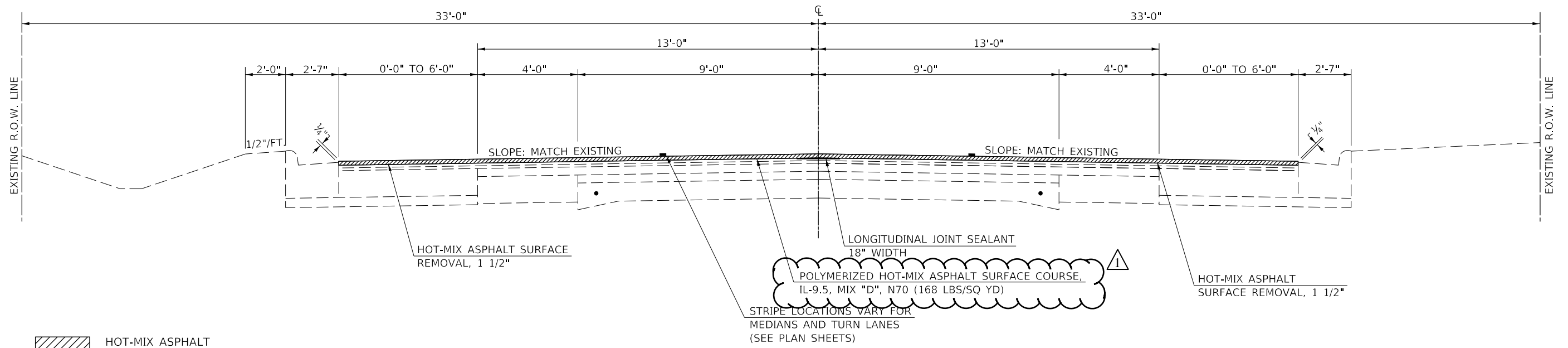
I EXISTING TYPICAL CROSS SECTION

STATION TO STATION
 (F) 505+62.00 TO 509+75.00



9 PROPOSED TYPICAL CROSS SECTION

STATION TO STATION
 (G) 505+62.00 TO 509+75.00



HOT-MIX ASPHALT SURFACE REMOVAL, 1 1/2"

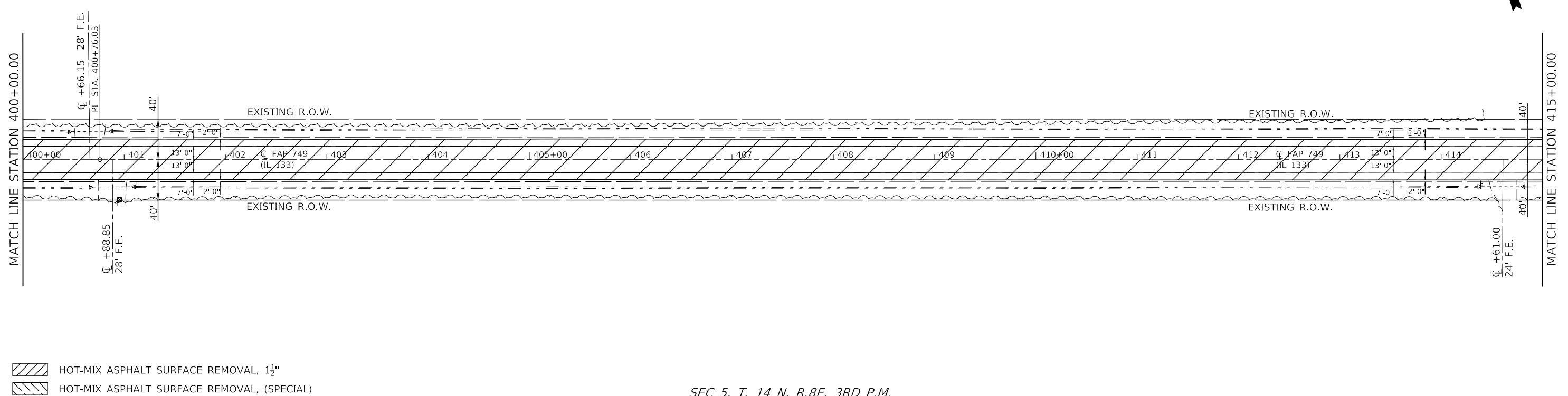
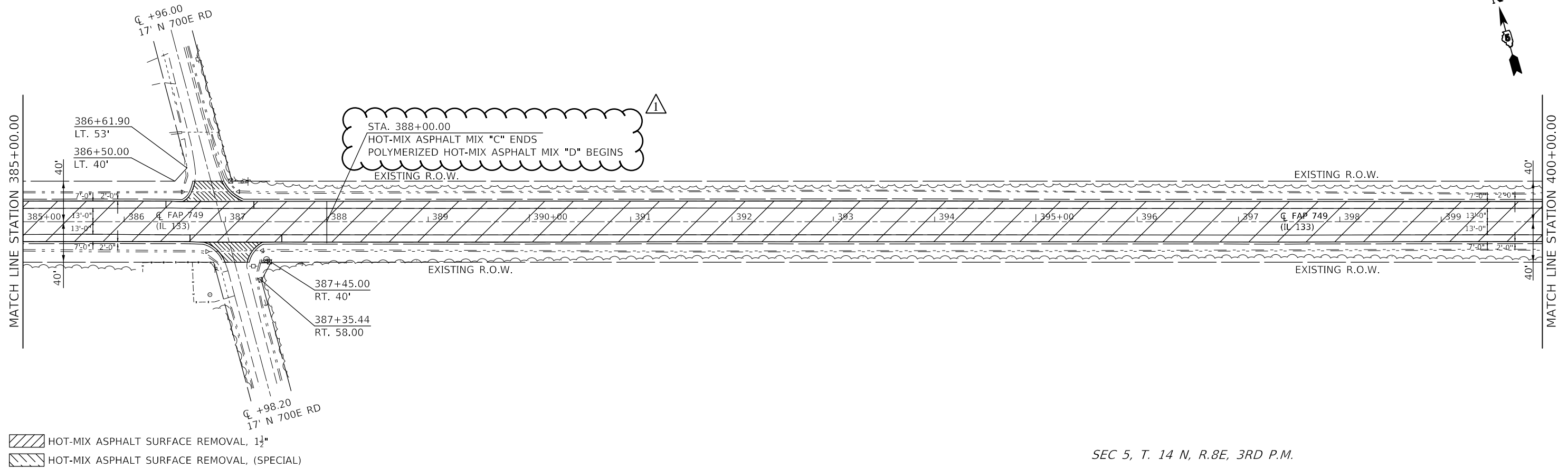
MODEL: \\MODEL\NAME FILES
 FILE: \\MODEL\70B03\Drawings\DOT Office\Drawings\9\Project\570B03\CADD\data\CADD\Sheet\570B03-9-Typical.dgn

USER NAME = eaglinga	DESIGNED -	REVISED -
PLOT SCALE = 40.0000 ' / in.	DRAWN -	REVISED -
PLOT DATE = 2/14/2022	CHECKED -	REVISED -
	DATE -	REVISED -

**STATE OF ILLINOIS
 DEPARTMENT OF TRANSPORTATION**

TYPICAL CROSS SECTIONS			
SCALE: NONE	SHEET 9 OF 9 SHEETS	STA.	TO STA.

F.A.P. RTE.	SECTION	COUNTY	TOTAL SHEETS	SHEET NO.
749	120RS-4	DOUGLAS	57	16
CONTRACT NO. 70B03				
ILLINOIS FED. AID PROJECT				



MODEL: \\MODELS\MAMES
FILE: \\MAMES_Plan\Ill133\Draw\benefit.com\PI\DOT\Documents\1\DOT_Offices\Drawings_S\Projects\0570B03\CADD\Drawings\0570B03-PL-DRAW\PLAN_SHEETS\1.dgn

HOT-MIX ASPHALT SURFACE REMOVAL, 1 1/2"
 HOT-MIX ASPHALT SURFACE REMOVAL, (SPECIAL)

USER NAME = eaglinga	DESIGNED -	REVISED -
PLOT SCALE = 100.0000' / in.	DRAWN -	REVISED -
PLOT DATE = 2/14/2022	CHECKED -	REVISED -
	DATE -	REVISED -

**STATE OF ILLINOIS
DEPARTMENT OF TRANSPORTATION**

ILL 133 Double Plan Sheet
SCALE: SHEET 12 OF 15 SHEETS STA. 385+00.00 TO STA. 415+00.00

F.A.P. RTE.	SECTION	COUNTY	TOTAL SHEETS	SHEET NO.
749	120RS-4	DOUGLAS	57	37
CONTRACT NO. 70B03				
ILLINOIS FED. AID PROJECT				