

STATE OF ILLINOIS  
DEPARTMENT OF TRANSPORTATION

F.A. RTE.	SECTION	COUNTY	TOTAL SHEETS	SHEET NO.
7	D5 CM PATCH 2022-6	DEWITT	5	1
		ILLINOIS	CONTRACT NO. 70F70	

\*SBI 120

FOR INDEX OF SHEETS, SEE SHEET NO. 2  
FOR SUMMARY OF QUANTITIES, SEE SHEET NO. 3

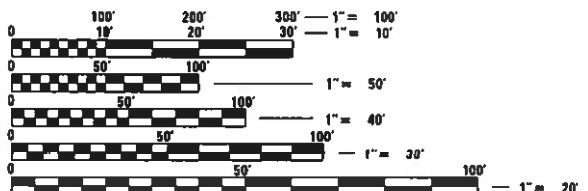
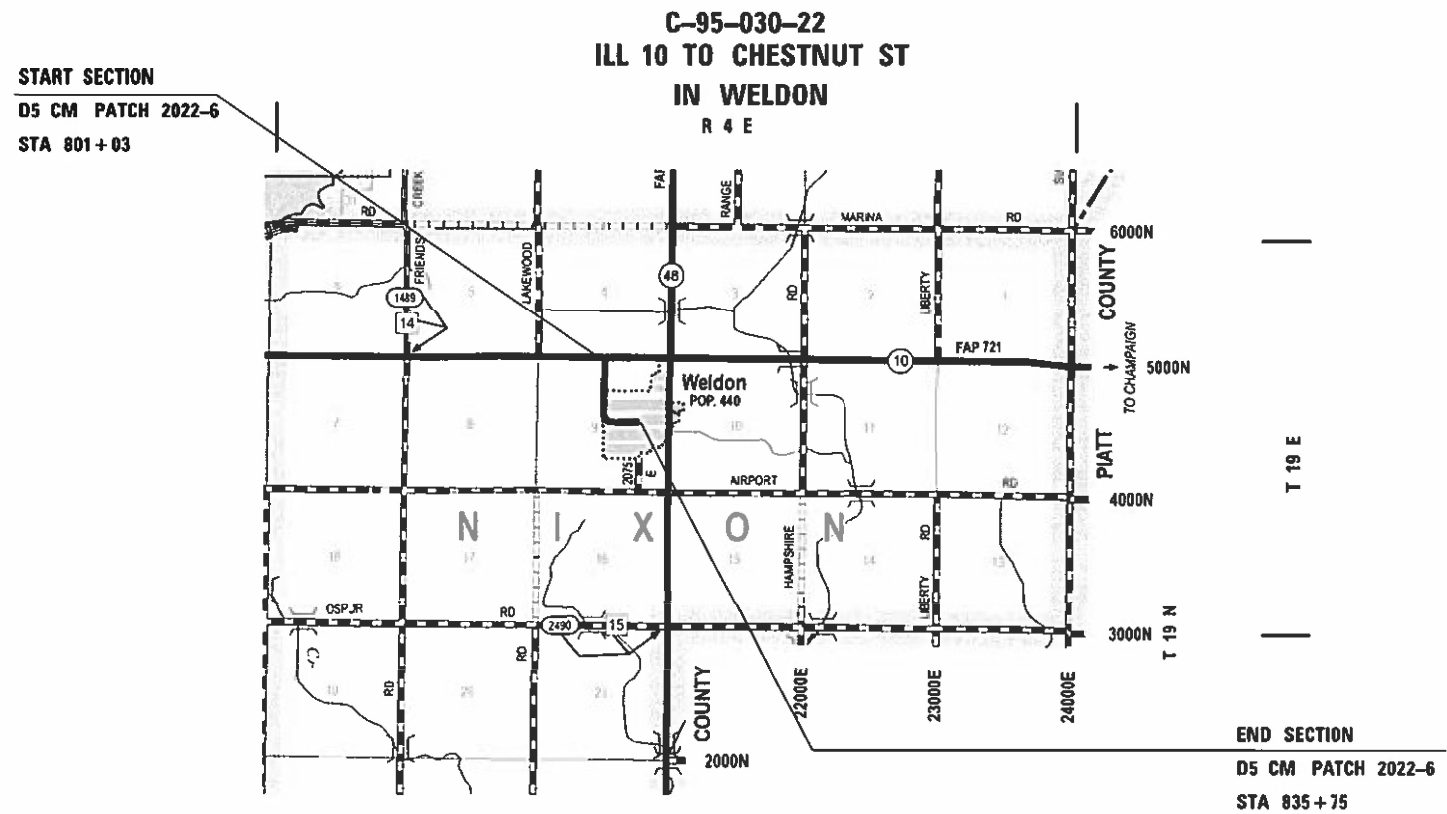
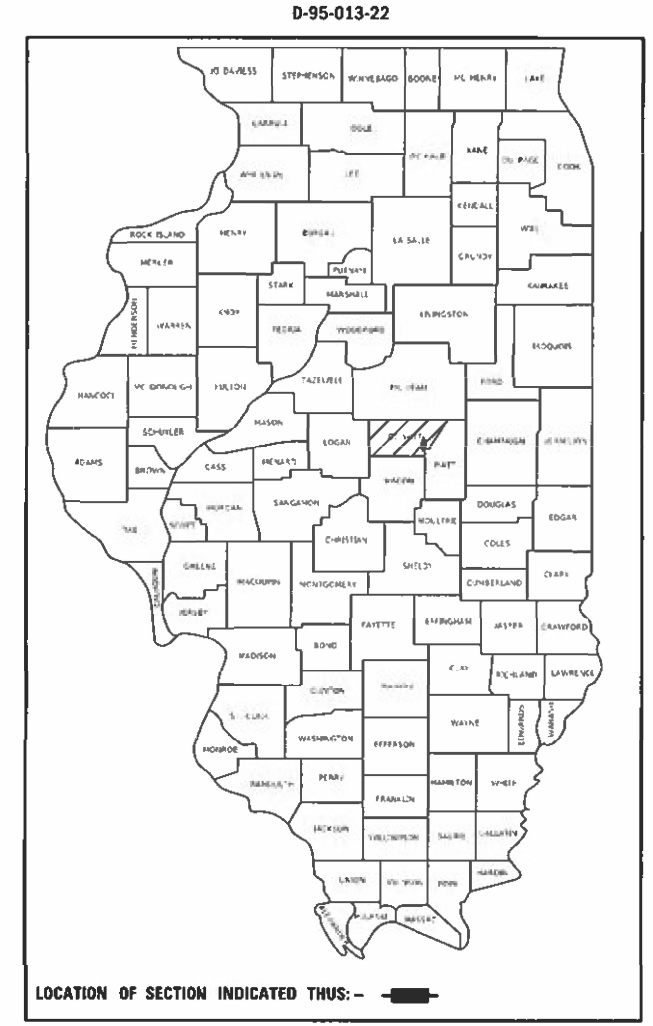
# PROPOSED HIGHWAY PLANS

SBI 120 (WEST ST /MAPLE ST)  
SECTION D5 CM PATCH 2022-6  
PROJECT  
CONTRACT MAINTENANCE PATCHING  
DEWITT COUNTY

**TRAFFIC DATA**

MAPLE STREET  
2021 ADT: 225  
2031 ADT: 225  
P.U. & P.C.%: 94.7  
S.U.%: 4.4  
M.U.%: 0.9

**DESIGN DESIGNATION**  
LOCAL

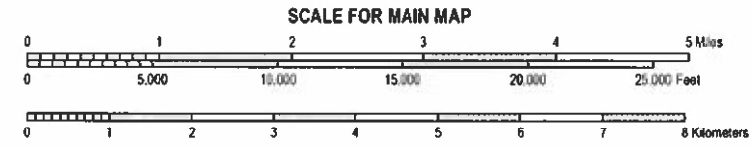


FULL SIZE PLANS HAVE BEEN PREPARED USING STANDARD ENGINEERING SCALES. REDUCED SIZED PLANS WILL NOT CONFORM TO STANDARD SCALES. IN MAKING MEASUREMENTS ON REDUCED PLANS, THE ABOVE SCALES MAY BE USED.

J.U.L.I.E.  
JOINT UTILITY LOCATION INFORMATION FOR EXCAVATORS  
1-800-892-0123  
OR 811  
NIXON TOWNSHIP

PROJECT ENGINEER: JASON STULTS  
DESIGNERS: JOHN CARTER & CLARE DIETZ

CONTRACT NO. 70F70



GROSS LENGTH = 3,472.00 FT. = 0.657 MILE  
NET LENGTH = 3,472.00 FT. = 0.657 MILE

STATE OF ILLINOIS  
DEPARTMENT OF TRANSPORTATION

SUBMITTED 12/10/2021  
Kensil A. Barnett swn  
REGIONAL ENGINEER

February 4, 2022  
[Signature]  
ENGINEER OF DESIGN AND ENVIRONMENT

February 4, 2022  
[Signature]  
DIRECTOR OF HIGHWAYS PROJECT IMPLEMENTATION

PRINTED BY THE AUTHORITY  
OF THE STATE OF ILLINOIS

## INDEX OF SHEETS

1	COVER SHEET
2	INDEX OF SHEETS
2	LIST OF HIGHWAY STANDARDS
2	GENERAL NOTES
3	SUMMARY OF QUANTITIES
4	TYPICAL CROSS SECTIONS
5	SCHEDULE OF QUANTITIES

## GENERAL NOTES

NONE

## LIST OF HIGHWAY STANDARDS

000001-08	STANDARD SYMBOLS, ABBREVIATIONS AND PATTERNS
001001-02	AREAS OF REINFORCEMENT BARS
001006	DECIMAL OF AN INCH AND OF A FOOT
420001-10	PAVEMENT JOINTS
420701-03	PAVEMENT WELDED WIRE REINFORCEMENT
442101-09	CLASS B PATCHES
701001-02	OFF-ROAD OPERATIONS, 2L, 2W, MORE THAN 15' AWAY
701006-05	OFF-ROAD OPERATIONS, 2L, 2W, 15' TO 24" FROM PAVEMENT EDGE
701301-04	LANE CLOSURE, 2L, 2W, SHORT TIME OPERATIONS
701501-06	URBAN LANE CLOSURE, 2L, 2W, UNDIVIDED
701901-08	TRAFFIC CONTROL DEVICES

## NO COMMITMENTS

MODEL: I:\MODEL\MAME  
 FILE: NAME: P:\Public\paw\_bentley.com\FW\DOT\Documents\DOT\_Offices\Dir\dir: S:\Project\DOT\70F70\CADD\DATA\CADD\Sheets\DOT\70F70\shh-GenNotes.dgn

USER NAME = Dietz/CB PLOT SCALE = 40,0000 */ in. PLOT DATE = 12/10/2021		DESIGNED - DRAWN - CHECKED - DATE -		REVISED - REVISED - REVISED - REVISED -		<b>STATE OF ILLINOIS DEPARTMENT OF TRANSPORTATION</b>		<b>INDEX OF SHEETS, LIST OF HIGHWAY STANDARDS &amp; GENERAL NOTES</b>				F.A. RTE. * SECTION D5 CM PATCH 2022-6 COUNTY DE WITT TOTAL SHEETS 5 SHEET NO. 2	
SCALE:		SHEET 1		OF 1 SHEETS		STA.		TO STA.		ILLINOIS		FED. AID PROJECT	

\*SBI 120

LOCATION OF WORK:

SBI 120(WEST ST/MAPLE ST)

RURAL

LOCAL STREET

STA. 801+03 TO STA. 835+75

DEWITT COUNTY

FUNDING BREAKOUT:

100% STATE

CONSTRUCTION TYPE CODE:

0006

CODE NO.	ITEM	UNIT	TOTAL QUANTITY
4420050	WELDED WIRE REINFORCEMENT	SQ YD	535.0
44200948	CLASS B PATCHES, TYPE I, 9"	SQ YD	25.0
44200956	CLASS B PATCHES, TYPE II, 9"	SQ YD	137.0
44200962	CLASS B PATCHES, TYPE III, 9"	SQ YD	35.0
44200964	CLASS B PATCHES, TYPE IV, 9"	SQ YD	500.00
44201299	DOWEL BARS 1 1/2"	EACH	396.0
44213200	SAW CUTS	FOOT	1,926.0
44213204	TIE BARS 3/4"	EACH	92.0
67100100	MOBILIZATION	L SUM	1.0
70102620	TRAFFIC CONTROL AND PROTECTION, STANDARD 701501	L SUM	1.0
* DENOTES SPECIALTY ITEM			

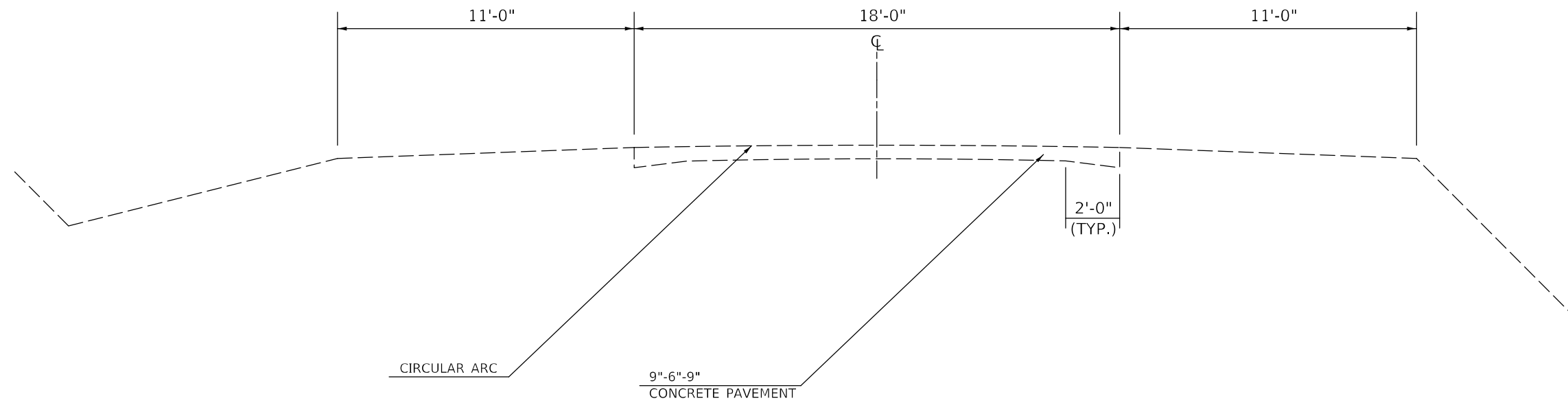
MODEL: \\MODEL\MAME  
 FILE: \\MAILS\_P\pub\luc\ba\be\ba\com\PIV\DOT\Documents\DOT\Office\Dir\dr: S\Project\05707\CAD\Drawn\CAD\Sheet\05707\sh5.S00.dgn

\*SBI 120

USER NAME = DietzCB	DESIGNED -	REVISED -	<b>STATE OF ILLINOIS DEPARTMENT OF TRANSPORTATION</b>	<b>SUMMARY OF QUANTITIES</b>			F.A. RTE.	SECTION	COUNTY	TOTAL SHEETS	SHEET NO.
PLOT SCALE = 40,0000 * / in.	DRAWN -	REVISED -					*	D5 CM PATCH 2022-6	DE WITT	5	3
PLOT DATE = 12/13/2021	CHECKED -	REVISED -		SCALE:	SHEET 1	OF 1	SHEETS	STA.	TO STA.	CONTRACT NO. 70F70	
	DATE -	REVISED -								ILLINOIS FED. AID PROJECT	

# EXISTING TYPICAL SECTION

STATION 801+03 TO STATION 835+75



MODEL: \\MODEL\MAME  
FILE: \\MAILS\_P\pub\electra\bea\p\com\PIV\DOT\Documents\DOT\_office\Dir\dir: S\Project\05707\CAD\data\CAD\sheet\05707\04h\Typical.dgn

USER NAME = DietzCB	DESIGNED -	REVISED -
	DRAWN -	REVISED -
PLOT SCALE = 40,0000 * / in.	CHECKED -	REVISED -
PLOT DATE = 12/10/2021	DATE -	REVISED -

**STATE OF ILLINOIS  
DEPARTMENT OF TRANSPORTATION**

<b>TYPICAL CROSS SECTION</b>	
SCALE:	SHEET 1 OF 1 SHEETS STA. TO STA.

F.A. RTE.	SECTION	COUNTY	TOTAL SHEETS	SHEET NO.
*	D5 CM PATCH 2022-6	DE WITT	5	4
CONTRACT NO. 70F70			ILLINOIS FED. AID PROJECT	

\*SBI 120

# SCHEDULE OF QUANTITIES

## CLASS B PATCHES

STATION	LANE	LENGTH (FOOT)	WIDTH (FCOT)	AREA (SQ YD)	44200948	44200956	44200962	44200964	44200050	44201299	44213200	44213204
					CLASS B PATCHES, TYPE I, 9 INCH (SQ YD)	CLASS B PATCHES, TYPE II, 9 INCH (SQ YD)	CLASS B PATCHES, TYPE III, 9 INCH (SQ YD)	CLASS B PATCHES, TYPE IV, 9 INCH (SQ YD)	WELDED WIRE REINFORCEMENT (SQ YD)	DOWEL BARS 1 1/2" (EACH)	SAW CUTS (FOOT)	TIE BARS 3/4" (EACH)
801+03	NB	50	9	50.0				50.0	50.0	16	118.0	17.0
801+03	SB	50	9	50.0				50.0	50.0	16	118.0	
801+90	NB	12	9	12.0		12.0				16	42.0	
801+90	SB	12	9	12.0		12.0				16	42.0	
802+10	NB	9	9	9.0		9.0				16	36.0	
802+10	SB	9	4	4.0	4.0					6	26.0	
802+31	SB	12	9	12.0		12.0				16	42.0	
810+35	NB	4	9	4.0	4.0					16	26.0	
812+25	SB	15	9	15.0			15.0		15.0	16	48.0	
812+73	NB	6	4	2.7	2.7					6	20.0	
812+73	SB	6	4	2.7	2.7					6	20.0	
815+79	SB	6	9	6.0		6.0				16	30.0	
818+43	SB	10	9	10.0		10.0				16	38.0	
818+43	NB	8	9	8.0		8.0				16	34.0	
819+55	SB	10	9	10.0		10.0				16	38.0	
821+07	SB	5	9	5.0		5.0				16	28.0	
821+37	NB	25	4	11.1		11.1				6	58.0	8.0
822+13	SB	10	4	4.4	4.4					6	28.0	
822+13	NB	10	4	4.4	4.4					6	28.0	
827+51	WB	10	9	10.0		10.0				16	38.0	
828+14	WB	5	5	2.8	2.8					8	20.0	
LYNN ST	WB	175	9	175.0				175.0	175.0	16	368.0	58.0
LYNN ST	EB	175	9	175.0				175.0	175.0	16	368.0	
832+35	WB	25	9	25.0				25.0	25.0	16	68.0	8.0
832+35	EB	25	9	25.0				25.0	25.0	16	68.0	
833+00	EB	20	9	20.0			20.0		20.0	16	58.0	
833+95	WB	8	9	8.0		8.0				16	34.0	
835+75	EB	12	9	12.0		12.0				16	42.0	
835+75	WB	12	9	12.0		12.0				16	42.0	
<b>TOTALS</b>					25.0	137.0	35.0	500.0	535.0	396.0	1926.0	91.0

MODEL: I:\MODEL\MHFE  
 FILE: MHFE\_Plan\Subcontract\beadby.com\PIV\DOT\Documents\DOT\Office\Dir\dr. S\Project\0570770\CADD\DATA\CADD\Sheet\0570770\shs\Schedule.dgn

USER NAME = DietzCB	DESIGNED -	REVISED -
	DRAWN -	REVISED -
PLOT SCALE = 40,0000 * / in.	CHECKED -	REVISED -
PLOT DATE = 12/10/2021	DATE -	REVISED -

**STATE OF ILLINOIS  
DEPARTMENT OF TRANSPORTATION**

**SCHEDULE OF QUANTITIES**

SCALE: SHEET 1 OF 1 SHEETS STA. TO STA.

F.A. RTE.	SECTION	COUNTY	TOTAL SHEETS	SHEET NO.
*	D5 CM PATCH 2022-6	DE WITT	5	5
CONTRACT NO. 70F70				
ILLINOIS		FED. AID PROJECT		

\*SBI 120