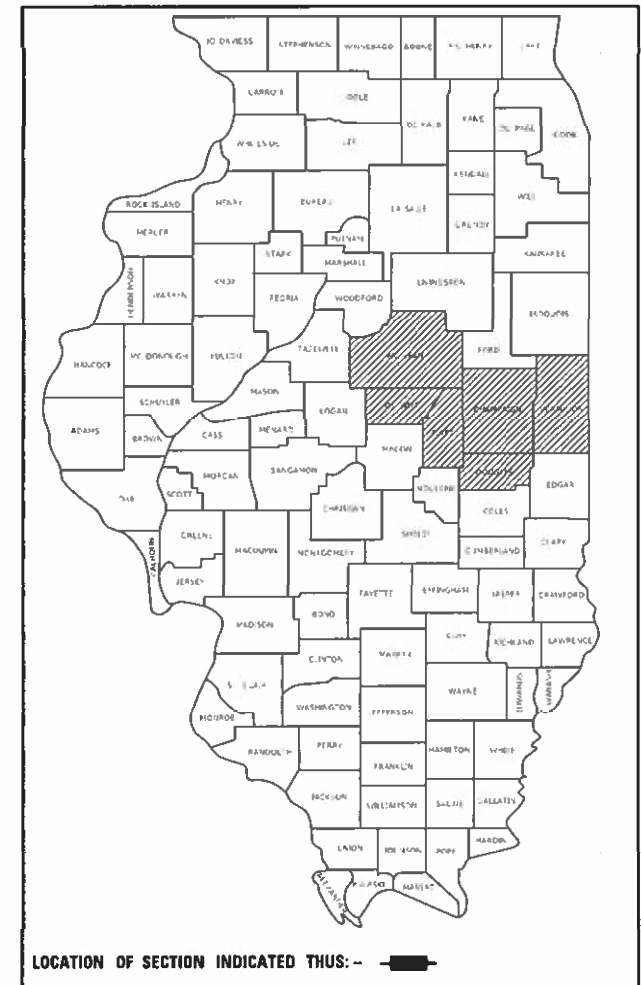


STATE OF ILLINOIS  
DEPARTMENT OF TRANSPORTATION

F.A. RTE.	SECTION	COUNTY	TOTAL SHEETS	SHEET NO.
VAR.		VARIOUS	17	1
		ILLINOIS	CONTRACT NO. 70F85	

\* D5 WEED SPRAYING 2022-1

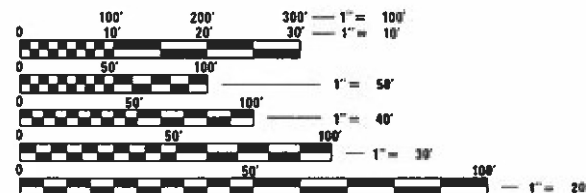
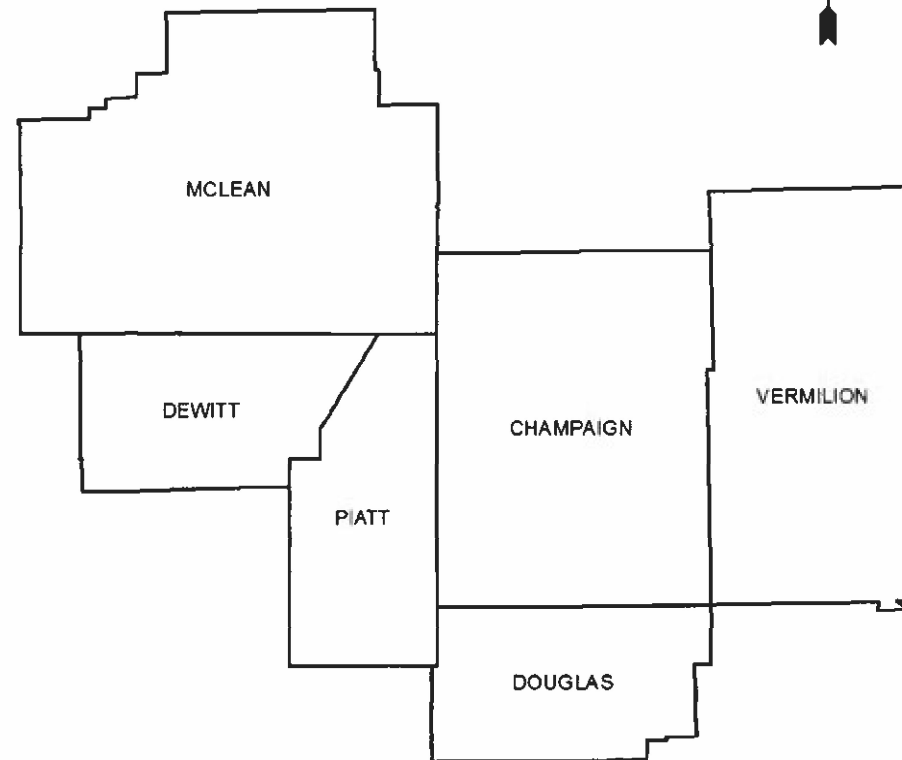
D-95-021-22



PROPOSED  
HIGHWAY PLANS

VARIOUS ROUTES  
SECTION D5 WEED SPRAYING 2022-1  
DISTRICT WIDE WEED SPRAYING  
VARIOUS COUNTIES

C-95-037-22



FULL SIZE PLANS HAVE BEEN PREPARED USING STANDARD ENGINEERING SCALES. REDUCED SIZED PLANS WILL NOT CONFORM TO STANDARD SCALES. IN MAKING MEASUREMENTS ON REDUCED PLANS, THE ABOVE SCALES MAY BE USED.

J.U.L.I.E.  
JOINT UTILITY LOCATION INFORMATION FOR EXCAVATORS  
1-800-892-0123  
OR 811

PROJECT ENGINEER: JASON STULTS  
DESIGNER: JASON STULTS  
PHONE: (217) 465-4181

CONTRACT NO. 70F85

GROSS LENGTH = 2,996,380.68 FT. = 567.496 MILE  
NET LENGTH = 2,996,380.68 FT. = 567.496 MILE

STATE OF ILLINOIS  
DEPARTMENT OF TRANSPORTATION

SUBMITTED 11/29 20 21  
Kensilla Hornethsaw  
REGIONAL ENGINEER

February 4 22  
[Signature]  
ENGINEER OF DESIGN AND ENVIRONMENT

February 4 22  
[Signature]  
DIRECTOR OF HIGHWAYS PROJECT IMPLEMENTATION

PRINTED BY THE AUTHORITY  
OF THE STATE OF ILLINOIS

# INDEX OF SHEETS

<u>SHEET NO.</u>	<u>DESCRIPTION</u>
1	COVER SHEET
2	INDEX OF SHEETS, LIST OF STANDARDS & GENERAL NOTES
3	LOCATION MAP 1: DEWITT AND PIATT COUNTIES
4	LOCATION MAP 2: MCLEAN COUNTY
5	LOCATION MAP 3: CHAMPAIGN CCUNTY
6	LOCATION MAP 4: VERMILION COUNTY
7	LOCATION MAP 5: DOUGLAS COUNTY
8	SUMMARY OF QUANTITIES
9-17	SCHEDULE OF QUANTITIES

# GENERAL NOTES

G.N.-100A

ELECTRONIC FILES AND/OR ELECTRONIC SURVEY INFORMATION INCLUDING CADD FILES WILL NOT BE AVAILABLE TO THE CONTRACTOR.

COMMITMENTS

THERE ARE NO COMMITMENTS ON THIS PROJECT.

# LIST OF HIGHWAY STANDARDS

<u>STANDARD NO.</u>	<u>DESCRIPTION</u>
000001-08	STANDARD SYMBOLS, ABBREVIATIONS AND PATTERNS
701101-05	OFF-RD OPERATIONS, MULTILANE, 15' (4.5 m) TO 24" (600m) FROM PAVEMENT EDGE
701106-02	OFF-RD OPERATIONS, MULTILANE, MORE THAN 15' (4.5m) AWAY
701426-09	LANE CLOSURE, MULTILANE, INTERMITTENT OR MOVING OPER., FOR SPEEDS ≥ 45MPH
701901-08	TRAFFIC CONTROL DEVICES

MODEL: \\MODEL\MNMF5  
 FILE: \\MAILS\_PUB\Public\paw\_bentley.com\P\INDOT\Documents\DOT\_Offices\Dir\dr: S:\Project\057085\CADD\Drawn\Index of Sheets Gen. Note Highway\_Std.dgn

USER NAME = plersonbr	DESIGNED -	REVISED -
	DRAWN -	REVISED -
PLOT SCALE = 40,0000 */ in.	CHECKED -	REVISED -
PLOT DATE = 11/15/2021	DATE -	REVISED -

**STATE OF ILLINOIS  
DEPARTMENT OF TRANSPORTATION**

**INDEX OF SHEETS, LIST OF STANDARDS  
& GENERAL NOTES**

SCALE: SHEET 1 OF 1 SHEETS STA. TO STA.

F.A. RTE.	SECTION	COUNTY	TOTAL SHEETS	SHEET NO.
VAR.	*	VARIOUS	17	2
* D5 WEED SPRAYING 2022-1			CONTRACT NO. 70F85	
ILLINOIS FED. AID PROJECT				




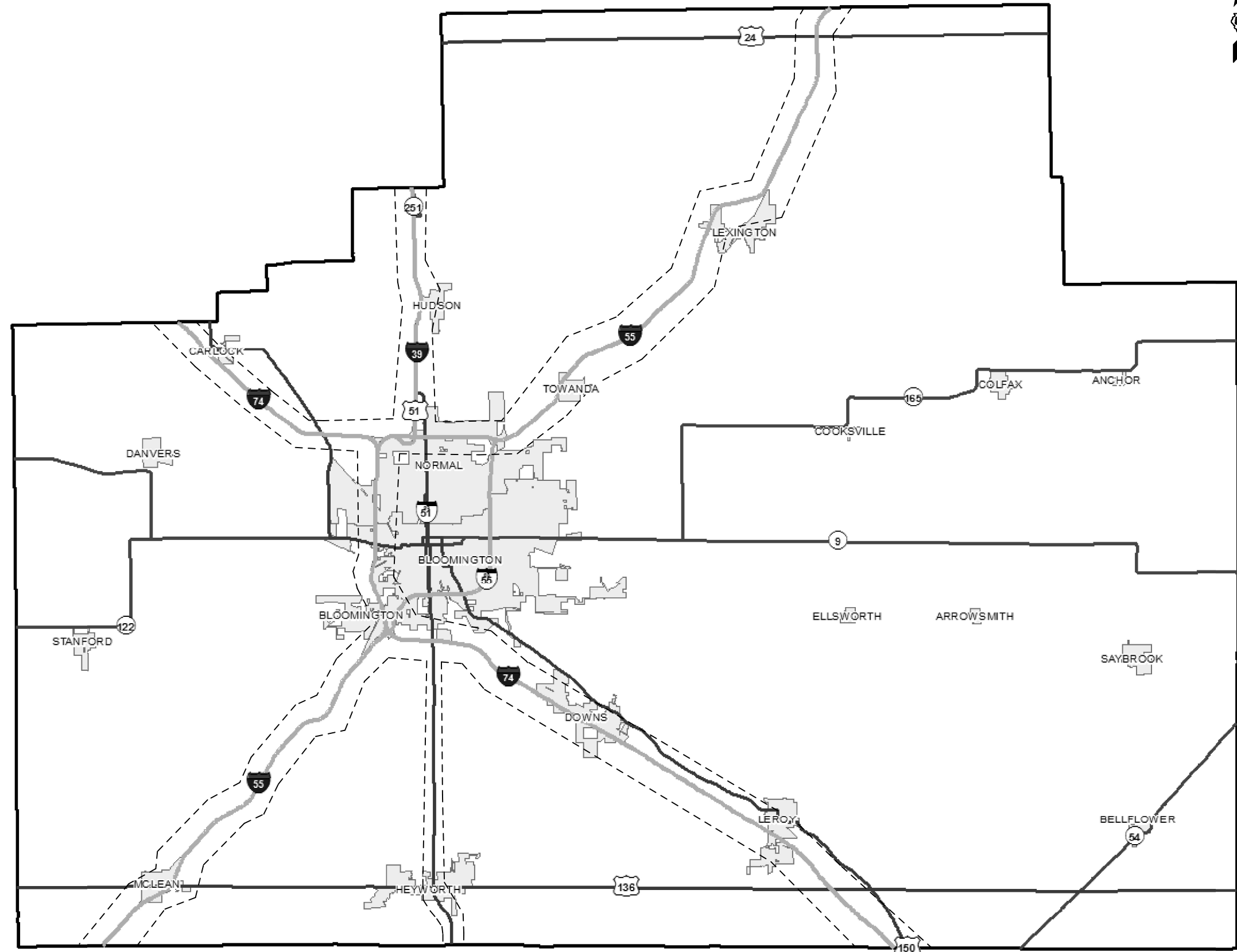
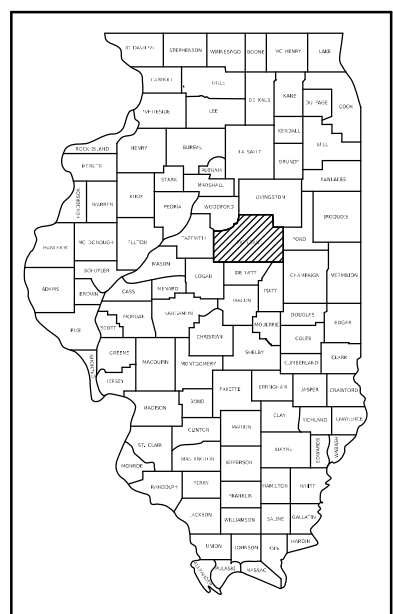


# LOCATION MAP 2: MCLEAN COUNTY



**TOWNSHIPS:**  
 WHITE OAK, DRY GROVE, NORMAL,  
 TOWANDA, MONEY CREEK, LEXINGTON,  
 CHENOA, BLOOMINGTON CITY, DOWNS,  
 BLOOMINGTON, OLD TOWN, EMPIRE,  
 DALE, FUNKS GROVE, MOUNT HOPE,  
 RANDOLPH

  
 WEED SPRAYING LOCATION



MODEL: \\MODEL\MNMF  
 FILE: \\MAILS\_P\public\paw\_beaufay.com\PI\DOT\Documents\DOT\_Offices\Dir\dir: S:\Project\10570885\CADD\Map\CAD\Sheet\10570885-shu-locmap2.dgn

USER NAME = plersonbr	DESIGNED -	REVISED -
PLOT SCALE = 40,0000 * / in.	DRAWN -	REVISED -
PLOT DATE = 11/15/2021	CHECKED -	REVISED -
	DATE -	REVISED -

**STATE OF ILLINOIS  
 DEPARTMENT OF TRANSPORTATION**

**LOCATION MAP 2**  
 SCALE: NONE SHEET 2 OF 5 SHEETS STA. TO STA.

F.A. RTE.	SECTION	COUNTY	TOTAL SHEETS	SHEET NO.
VAR.	*	VARIOUS	17	4
* D5 WEED SPRAYING 2022-1			CONTRACT NO. 70F85	
ILLINOIS FED. AID PROJECT				



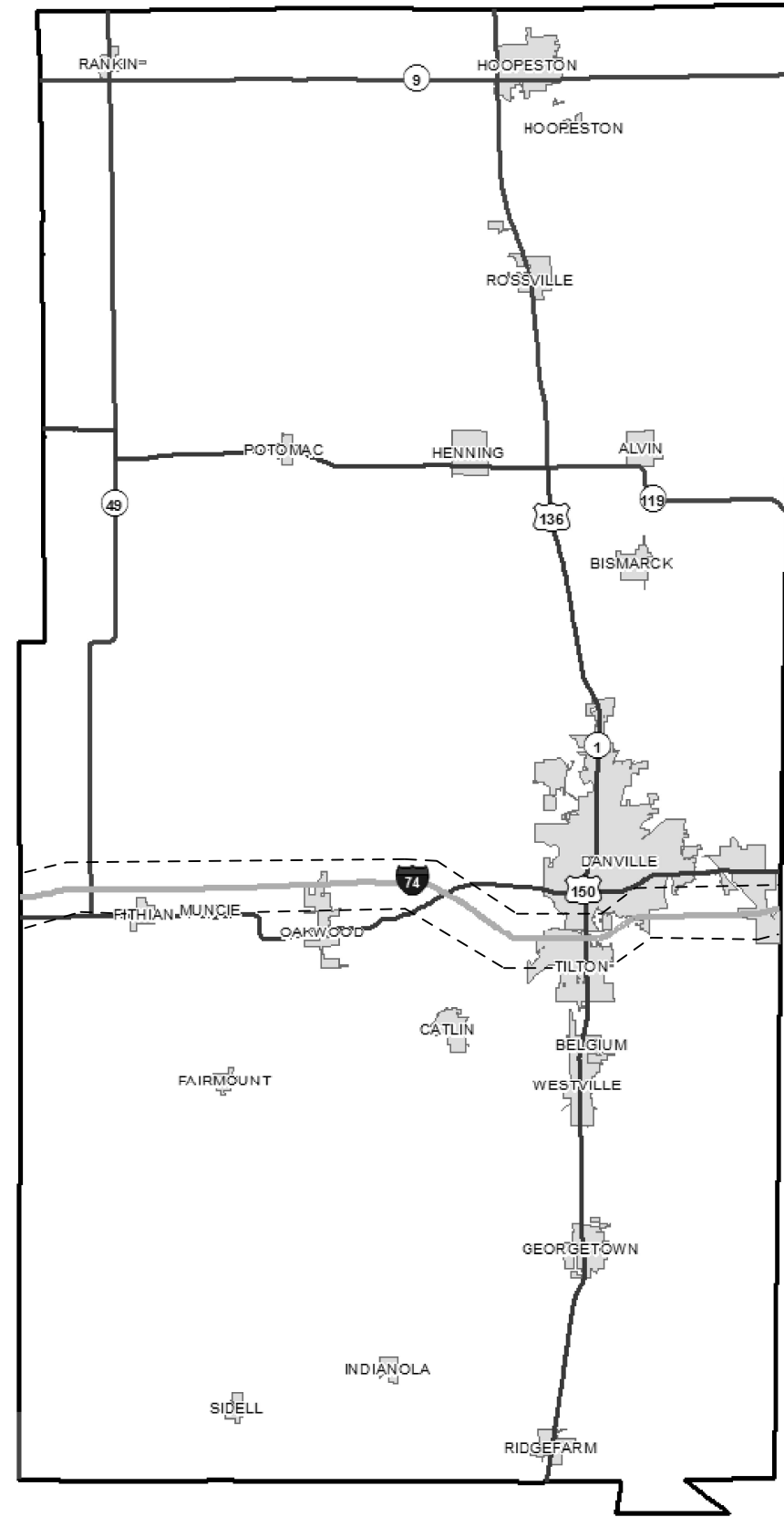
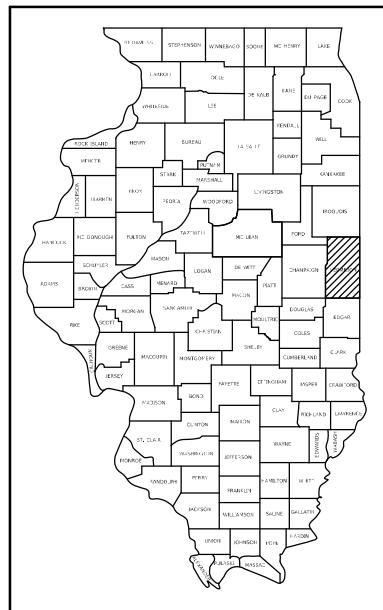
# LOCATION MAP 4: VERMILION COUNTY



**TOWNSHIPS:**  
OAKWOOD, CATLIN, DANVILLE



WEED SPRAYING LOCATION



MODEL: \\MODEL\MNMF5  
 FILE: \\MAILS\p\111522\paw\_bendley.com\FW\DOT\Documents\DOT\_Offices\Dir\dir: S:\Project\DOT\70F85\CADD\Map\CAD\Sheet\DOT70F85-sh4-locmap.dgn

USER NAME = plersonbr	DESIGNED -	REVISED -
	DRAWN -	REVISED -
PLOT SCALE = 40,0000 * / in.	CHECKED -	REVISED -
PLOT DATE = 11/15/2021	DATE -	REVISED -

**STATE OF ILLINOIS**  
**DEPARTMENT OF TRANSPORTATION**

**LOCATION MAP 4**  
 SCALE: NONE    SHEET 4 OF 5 SHEETS    STA.    TO STA.

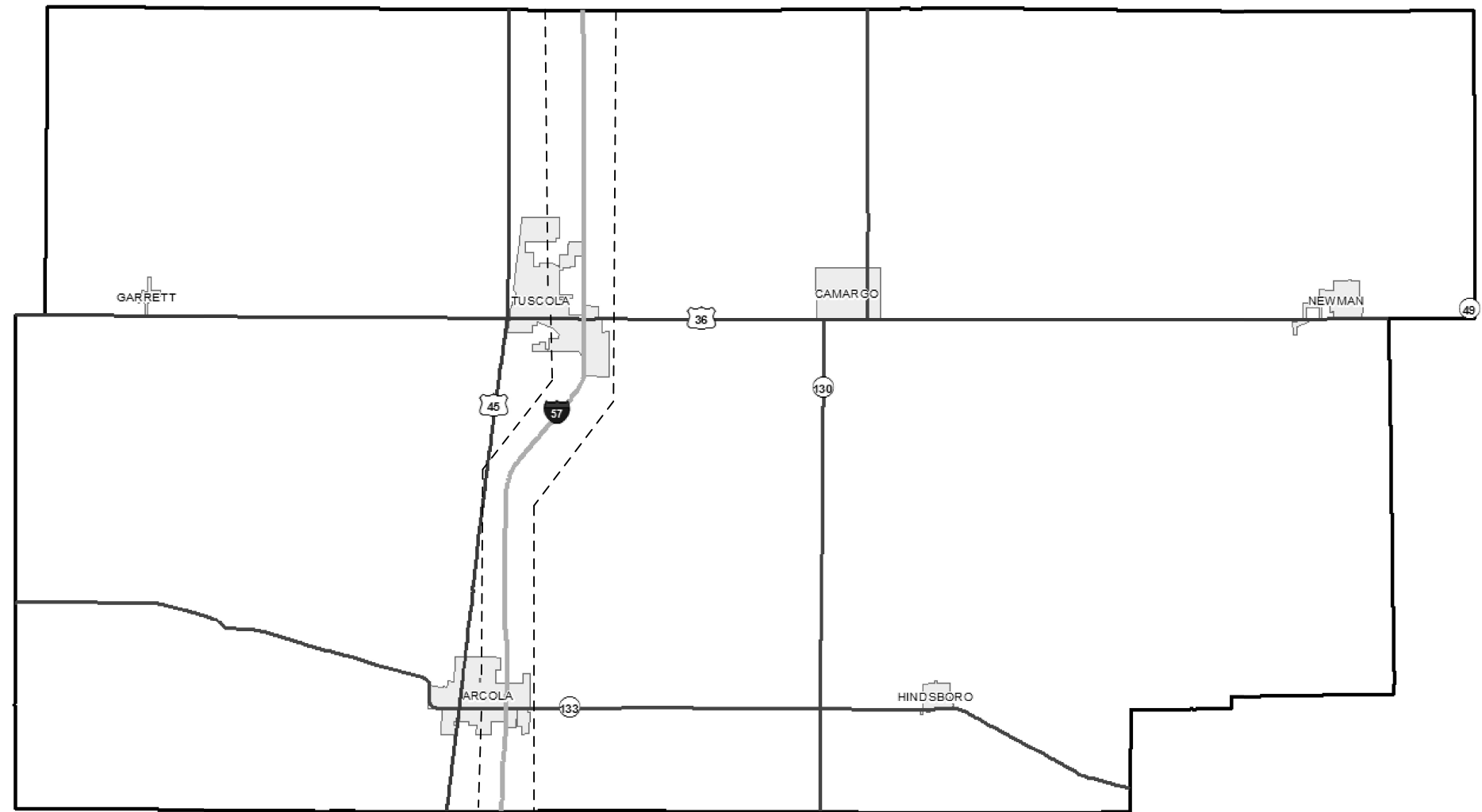
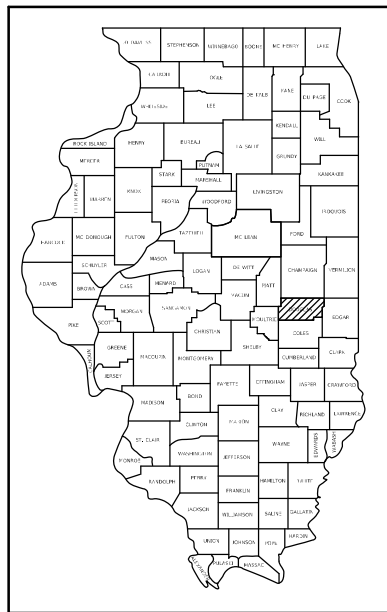
F.A. RTE.	SECTION	COUNTY	TOTAL SHEETS	SHEET NO.
VAR.	*	VARIOUS	17	6
* D5 WEED SPRAYING 2022-1		CONTRACT NO. 70F85		
ILLINOIS FED. AID PROJECT				

# LOCATION MAP 5: DOUGLAS COUNTY



**TOWNSHIPS:**  
TUSCOLA, ARCOLA

  
WEED SPRAYING LOCATION



MODEL: \\MODEL\MAME  
 FILE: NAME: p:\pub\caw\_beaufay.com\PIV\DOT\Documents\DOT\_Offices\Dir\dr: S:\Project\DOT\70F85\CADD\DATA\CAD\Sheet5\DOT70F85-5-hu-locmap.dgn

USER NAME = plersonbr	DESIGNED -	REVISED -
	DRAWN -	REVISED -
PLOT SCALE = 40,0000 * / in.	CHECKED -	REVISED -
PLOT DATE = 11/15/2021	DATE -	REVISED -

**STATE OF ILLINOIS  
DEPARTMENT OF TRANSPORTATION**

**LOCATION MAP 5**

SCALE: NONE SHEET 5 OF 5 SHEETS STA. TO STA.

F.A. RTE.	SECTION	COUNTY	TOTAL SHEETS	SHEET NO.
VAR.	*	VARIOUS	17	7
* D5 WEED SPRAYING 2022-1			CONTRACT NO. 70F85	
ILLINOIS FED. AID PROJECT				

# SUMMARY OF QUANTITIES

LOCATION OF WORK:	VARIOUS ROUTES	VARIOUS ROUTES
	RURAL	URBAN
COUNTY:	VARIOUS COUNTIES	VARIOUS COUNTIES
FUNDING BREAKOUT:	100% STATE	100% STATE
CONSTRUCTION CODE:	0031	0031

CODE NO.	ITEM	UNIT	TOTAL QUANTITY	QUANTITY	QUANTITY
67100100	MOBILIZATION	L SUM	1.0	0.6	0.4
K0029636	ESCORT XP HERBICIDE	POUND	42.0	26.0	16.0
X0322294	PLATEAU HERBICIDE	GALLON	48.0	30.0	18.0
X0325947	MILESTONE VM	GALLON	80.0	50.0	30.0

MODEL: \\MODEL\MAME  
 FILE: \\MAILS\_P\pub\elect\paw\beefay.com\FW\DOT\Documents\DOT\_Offices\Dir\dr. S\Project\0570885\CAD\data\CAD\sheet\0570885-sh-Summary of Quantities.dgn

USER NAME = plersonbr	DESIGNED -	REVISED -
	DRAWN -	REVISED -
PLOT SCALE = 40,0000 */ in.	CHECKED -	REVISED -
PLOT DATE = 11/15/2021	DATE -	REVISED -

**STATE OF ILLINOIS  
DEPARTMENT OF TRANSPORTATION**

**SUMMARY OF QUANTITIES**

SCALE: NONE    SHEET 1 OF 1 SHEETS    STA.    TO STA.

F.A. RTE.	SECTION	COUNTY	TOTAL SHEETS	SHEET NO.
VAR.	*	VARIOUS	17	8
* D5 WEED SPRAYING 2022-1		CONTRACT NO. 70F85		
ILLINOIS		FED. AID PROJECT		

# SCHEDULE OF QUANTITIES

## CHAMPAIGN COUNTY

ROUTE	LOCATION	STARTING LOCATION	ENDING LOCATION	ESTIMATED AREA	X0322294	X0322294	X0325947	X0325947	K0029636	K0029636	URBAN/ RURAL	COUNTY
					PLATEAU HERBICIDE (3 oz/acre)	PLATEAU HERBICIDE (3 oz/acre)	MILESTONE VM (5 oz/acre)	MILESTONE VM (5 oz/acre)	ESCORT XP HERBICIDE (0.33 oz/acre)	ESCORT XP HERBICIDE (0.33 oz/acre)		
I72	EB	PIATT COUNTY LINE	SN 010-0056 - IL 47 INTERCHANGE	10.75	0.25		0.42		0.22		RURAL	CHAMPAIGN
I72	WB	PIATT COUNTY LINE	SN 010-0056 - IL 47 INTERCHANGE	10.75	0.25		0.42		0.22		RURAL	CHAMPAIGN
I72	EB RAMPS	EXIT 176 - IL 47 INTERCHANGE	EXIT 176 - IL 47 INTERCHANGE	1.48	0.03		0.06		0.03		RURAL	CHAMPAIGN
I72	WB RAMPS	EXIT 176 - IL 47 INTERCHANGE	EXIT 176 - IL 47 INTERCHANGE	1.47	0.03		0.06		0.03		RURAL	CHAMPAIGN
I72	EB	SN 010-0056 - IL 47 INTERCHANGE	MP 177.89	5.48	0.13		0.21		0.11		RURAL	CHAMPAIGN
I72	WB	SN 010-0056 - IL 47 INTERCHANGE	MP 177.89	5.48	0.13		0.21		0.11		RURAL	CHAMPAIGN
I72	EB	MP 177.89	SN 010-0035 - I57 INTERCHANGE	14.25		0.33		0.56		0.29	URBAN	CHAMPAIGN
I72	WB	MP 177.89	SN 010-0034 - I57 INTERCHANGE	14.25		0.33		0.56		0.29	URBAN	CHAMPAIGN
I72	EB RAMPS	EXIT 182A/182B - I57 INTERCHANGE	EXIT 182A/182B - I57 INTERCHANGE	3.47		0.08		0.14		0.07	URBAN	CHAMPAIGN
I72	WB RAMPS	EXIT 182A/182B - I57 INTERCHANGE	EXIT 182A/182B - I57 INTERCHANGE	3.47		0.08		0.14		0.07	URBAN	CHAMPAIGN
I57	NB	DOUGLAS COUNTY LINE	SN 010-0198 - US 45 INTERCHANGE	7.65	0.18		0.30		0.16		RURAL	CHAMPAIGN
I57	SB	DOUGLAS COUNTY LINE	SN 010-0199 - US 45 INTERCHANGE	7.65	0.18		0.30		0.16		RURAL	CHAMPAIGN
I57	NB RAMPS	EXIT 220 - US 45 INTERCHANGE	EXIT 220 - US 45 INTERCHANGE	1.19	0.03		0.05		0.02		RURAL	CHAMPAIGN
I57	SB RAMPS	EXIT 220 - US 45 INTERCHANGE	EXIT 220 - US 45 INTERCHANGE	1.18	0.03		0.05		0.02		RURAL	CHAMPAIGN
I57	NB	SN 010-0198 - US 45 INTERCHANGE	SN 010-0128 - EXIT 229	31.77	0.74		1.24		0.66		RURAL	CHAMPAIGN
I57	SB	SN 010-0199 - US 45 INTERCHANGE	SN 010-0128 - EXIT 229	31.77	0.74		1.24		0.66		RURAL	CHAMPAIGN
I57	NB RAMPS	EXIT 229 - MONTICELLO ROAD	EXIT 229 - MONTICELLO ROAD	1.64	0.04		0.06		0.03		RURAL	CHAMPAIGN
I57	SB RAMPS	EXIT 229 - MONTICELLO ROAD	EXIT 229 - MONTICELLO ROAD	1.61	0.04		0.06		0.03		RURAL	CHAMPAIGN
I57	NB	SN 010-0128 - EXIT 229	SN 010-0105 - MP 230.52	7.41	0.17		0.29		0.15		RURAL	CHAMPAIGN
I57	SB	SN 010-0128 - EXIT 229	SN 010-0105 - MP 230.52	7.41	0.17		0.29		0.15		RURAL	CHAMPAIGN
I57	NB	SN 010-0105 - MP 230.52	SN 010-0272 - CURTIS RD INTERCHANGE	3.64		0.09		0.14		0.08	URBAN	CHAMPAIGN
I57	SB	SN 010-0105 - MP 230.52	SN 010-0272 - CURTIS RD INTERCHANGE	3.64		0.09		0.14		0.08	URBAN	CHAMPAIGN
I57	NB RAMPS	EXIT 232 - CURTIS RD INTERCHANGE	EXIT 232 - CURTIS ROAD INTERCHANGE	2.03		0.05		0.08		0.04	URBAN	CHAMPAIGN
I57	SB RAMPS	EXIT 232 - CURTIS RD INTERCHANGE	EXIT 232 - CURTIS ROAD INTERCHANGE	2.00		0.05		0.08		0.04	URBAN	CHAMPAIGN
I57	NB	SN 010-0272 - CURTIS RD INTERCHANGE	SN 010-0018 - I74 INTERCHANGE	20.70		0.49		0.81		0.43	URBAN	CHAMPAIGN
I57	SB	SN 010-0272 - CURTIS RD INTERCHANGE	SN 010-0018 - I74 INTERCHANGE	20.70		0.49		0.81		0.43	URBAN	CHAMPAIGN
I57	NB RAMPS	EXIT 237A/237B - I74 INTERCHANGE	EXIT 237A/237B - I74 INTERCHANGE	3.31		0.08		0.13		0.07	URBAN	CHAMPAIGN
I57	SB RAMPS	EXIT 237A/237B - I74 INTERCHANGE	EXIT 237A/237B - I74 INTERCHANGE	3.31		0.08		0.13		0.07	URBAN	CHAMPAIGN
I57	NB	SN 010-0018 - I74 INTERCHANGE	SN 010-0254 - OLYMPIAN DR INTERCHANGE	3.65		0.09		0.14		0.08	URBAN	CHAMPAIGN
I57	SB	SN 010-0018 - I74 INTERCHANGE	SN 010-0254 - OLYMPIAN DR INTERCHANGE	3.65		0.09		0.14		0.08	URBAN	CHAMPAIGN
I57	NB RAMPS	EXIT 238 - OLYMPIAN DR INTERCHANGE	EXIT 238 - OLYMPIAN DRIVE INTERCHANGE	1.06		0.02		0.04		0.02	URBAN	CHAMPAIGN
I57	SB RAMPS	EXIT 238 - OLYMPIAN DR INTERCHANGE	EXIT 238 - OLYMPIAN DRIVE INTERCHANGE	1.09		0.03		0.04		0.02	URBAN	CHAMPAIGN
I57	NB	SN 010-0254 - OLYMPIAN DR INTERCHANGE	MP 239.06	2.94		0.07		0.11		0.06	URBAN	CHAMPAIGN
I57	SB	SN 010-0254 - OLYMPIAN DR INTERCHANGE	MP 239.06	2.94		0.07		0.11		0.06	URBAN	CHAMPAIGN
I57	NB	MP 239.06	SN 010-0185 - MARKET ST INTERCHANGE	4.99	0.12		0.20		0.10		RURAL	CHAMPAIGN
I57	SB	MP 239.06	SN 010-0185 - MARKET ST INTERCHANGE	4.99	0.12		0.20		0.10		RURAL	CHAMPAIGN
I57	NB RAMPS	EXIT 240 - MARKET ST INTERCHANGE	EXIT 240 - MARKET ST INTERCHANGE	1.51	0.04		0.06		0.03		RURAL	CHAMPAIGN
I57	SB RAMPS	EXIT 240 - MARKET ST INTERCHANGE	EXIT 240 - MARKET ST INTERCHANGE	1.18	0.03		0.05		0.02		RURAL	CHAMPAIGN
I57	NB	SN 010-0185 - MARKET ST INTERCHANGE	MP 244.11	13.44	0.32		0.53		0.28		RURAL	CHAMPAIGN
I57	SB	SN 010-0185 - MARKET ST INTERCHANGE	MP 244.11	13.44	0.32		0.53		0.28		RURAL	CHAMPAIGN
I57	NB	MP 244.11	SN 010-0013 - US 136 INTERCHANGE	21.66		0.51		0.85		0.45	URBAN	CHAMPAIGN
I57	SB	MP 244.11	SN 010-0012 - US 136 INTERCHANGE	21.66		0.51		0.85		0.45	URBAN	CHAMPAIGN
I57	NB RAMPS	EXIT 250 - US 136 INTERCHANGE	EXIT 250 - US 136 INTERCHANGE	3.21		0.08		0.13		0.07	URBAN	CHAMPAIGN
I57	SB RAMPS	EXIT 250 - US 136 INTERCHANGE	EXIT 250 - US 136 INTERCHANGE	3.17		0.07		0.12		0.07	URBAN	CHAMPAIGN
I57	NB	SN 010-0013 - US 136 INTERCHANGE	MP 250.27	0.94		0.02		0.04		0.02	URBAN	CHAMPAIGN
I57	SB	SN 010-0012 - US 136 INTERCHANGE	MP 250.27	0.94		0.02		0.04		0.02	URBAN	CHAMPAIGN
I57	NB	MP 250.27	FORD COUNTY LINE	24.81	0.58		0.97		0.51		RURAL	CHAMPAIGN
I57	SB	MP 250.27	FORD COUNTY LINE	24.81	0.58		0.97		0.51		RURAL	CHAMPAIGN

MODEL: I:\MODEL\MHFS  
 FILE: MHFS\_Plan\Public\paw\_benefits.com\PIV\DOT\Documents\DOT\_Offices\Dir\Dir\_5\Project\057085\CAD\Drawings\CAD\Sheet\057085-Sch-Schedule of Quantities.dgn

USER NAME = plersonbr	DESIGNED -	REVISED -
	DRAWN -	REVISED -
PLOT SCALE = 40,0000 * / in.	CHECKED -	REVISED -
PLOT DATE = 11/15/2021	DATE -	REVISED -

**STATE OF ILLINOIS  
DEPARTMENT OF TRANSPORTATION**

**SCHEDULE OF QUANTITIES**

SCALE: NONE    SHEET 1 OF 9 SHEETS    STA.    TO STA.

F.A. RTE.	SECTION	COUNTY	TOTAL SHEETS	SHEET NO.
VAR.	*	VARIOUS	17	9
* D5 WEED SPRAYING 2022-1		CONTRACT NO. 70F85		
ILLINOIS    FED. AID PROJECT				





# SCHEDULE OF QUANTITIES

## DEWITT COUNTY

ROUTE	LOCATION	STARTING LOCATION	ENDING LOCATION	ESTIMATED AREA ACRES	X0322294	X0322294	X0325947	X0325947	K0029636	K0029636	URBAN/ RURAL	COUNTY
					PLATEAU HERBICIDE (3 oz/acre) GALLON	PLATEAU HERBICIDE (3 oz/acre) GALLON	MILESTONE VM (5 oz/acre) GALLON	MILESTONE VM (5 oz/acre) GALLON	ESCORT XP HERBICIDE (0.33 oz/acre) POUND	ESCORT XP HERBICIDE (0.33 oz/acre) POUND		
174	EB	MCLEAN COUNTY LINE	SN 020-0034 - IL 54 INTERCHANGE	14.46	0.34		0.56		0.30		RURAL	DEWITT
174	WB	MCLEAN COUNTY LINE	SN 020-0034 - IL 54 INTERCHANGE	14.46	0.34		0.56		0.30		RURAL	DEWITT
174	EB RAMPS	EXIT 159 - IL 54 INTERCHANGE	EXIT 159 - IL 54 INTERCHANGE	1.65	0.04		0.06		0.03		RURAL	DEWITT
174	WB RAMPS	EXIT 159 - IL 54 INTERCHANGE	EXIT 159 - IL 54 INTERCHANGE	1.65	0.04		0.06		0.03		RURAL	DEWITT
174	EB	SN 020-0034 - IL 54 INTERCHANGE	PIATT COUNTY LINE	4.36	0.10		0.17		0.09		RURAL	DEWITT
174	WB	SN 020-0034 - IL 54 INTERCHANGE	PIATT COUNTY LINE	4.36	0.10		0.17		0.09		RURAL	DEWITT
US 51	NB	MCLEAN COUNTY LINE	WAYNESVILLE ROAD	13.13	0.31		0.51		0.27		RURAL	DEWITT
US 51	SB	MCLEAN COUNTY LINE	WAYNESVILLE ROAD	13.13	0.31		0.51		0.27		RURAL	DEWITT
US 51	NB	WAYNESVILLE ROAD	ELM STREET IN WAPELLA	1.02		0.02		0.04		0.02	URBAN	DEWITT
US 51	SB	WAYNESVILLE ROAD	ELM STREET IN WAPELLA	1.02		0.02		0.04		0.02	URBAN	DEWITT
US 51	SB	ELM STREET IN WAPELLA	4TH STREET IN WAPELLA	1.11		0.03		0.04		0.02	URBAN	DEWITT
US 51	NB	THORPS ROAD IN WAPELLA	800 FT SOUTH OF THORPS ROAD	0.28		0.01		0.01		0.01	URBAN	DEWITT
US 51	SB	THORPS ROAD IN WAPELLA	800 FT SOUTH OF THORPS ROAD	0.28		0.01		0.01		0.01	URBAN	DEWITT
US 51	NB	800 FT SOUTH OF THORPS ROAD	WALNUT ROAD IN CLINTON	11.16		0.26		0.44		0.23	URBAN	DEWITT
US 51	SB	800 FT SOUTH OF THORPS ROAD	WALNUT ROAD IN CLINTON	11.16		0.26		0.44		0.23	URBAN	DEWITT
US 51	NB	WALNUT ROAD IN CLINTON	S.N.020-0052 / TEN MILE CREEK	4.55	0.11		0.18		0.09		RURAL	DEWITT
US 51	SB	WALNUT ROAD IN CLINTON	S.N.020-0053 / TEN MILE CREEK	4.55	0.11		0.18		0.09		RURAL	DEWITT
US 51	NB	S.N. 020-0052 / TEN MILE CREEK	TR 203B / MEADOWBROOK ROAD	13.35		0.31		0.52		0.28	URBAN	DEWITT
US 51	SB	S.N. 020-0053 / TEN MILE CREEK	TR 203B / MEADOWBROOK ROAD	13.35		0.31		0.52		0.28	URBAN	DEWITT
US 51	NB	TR 203B / MEADOWBROOK ROAD	DEWITT / MACON COUNTY LINE	14.44	0.34		0.56		0.30		RURAL	DEWITT
US 51	SB	TR 203B / MEADOWBROOK ROAD	DEWITT / MACON COUNTY LINE	14.44	0.34		0.56		0.30		RURAL	DEWITT
TOTAL =				157.87	2.46	1.24	4.11	2.06	2.17	1.09		
				ACRES	GALLON	GALLON	GALLON	GALLON	POUND	POUND		
					(RURAL)	(URBAN)	(RURAL)	(URBAN)	(RURAL)	(URBAN)		

## DOUGLAS COUNTY

ROUTE	LOCATION	STARTING LOCATION	ENDING LOCATION	ESTIMATED AREA ACRES	X0322294	X0322294	X0325947	X0325947	K0029636	K0029636	URBAN/ RURAL	COUNTY
					PLATEAU HERBICIDE (3 oz/acre) GALLON	PLATEAU HERBICIDE (3 oz/acre) GALLON	MILESTONE HERBICIDE (5 oz/acre) GALLON	MILESTONE HERBICIDE (5 oz/acre) GALLON	ESCORT XP HERBICIDE (0.33 oz/acre) POUND	ESCORT XP HERBICIDE (0.33 oz/acre) POUND		
157	NB	COLES COUNTY LINE	SN 021-0024 - IL 133 INTERCHANGE	7.29	0.17		0.28		0.15		RURAL	DOUGLAS
157	SB	COLES COUNTY LINE	SN 021-0024 - IL 133 INTERCHANGE	7.29	0.17		0.28		0.15		RURAL	DOUGLAS
157	NB RAMPS	EXIT 203 - IL 133 INTERCHANGE	EXIT 203 - IL 133 INTERCHANGE	1.59	0.04		0.06		0.03		RURAL	DOUGLAS
157	SB RAMPS	EXIT 203 - IL 133 INTERCHANGE	EXIT 203 - IL 133 INTERCHANGE	1.59	0.04		0.06		0.03		RURAL	DOUGLAS
157	NB	SN 021-0024 - IL 133 INTERCHANGE	SN 021-0009 - US 36 INTERCHANGE	29.59	0.69		1.16		0.61		RURAL	DOUGLAS
157	SB	SN 021-0024 - IL 133 INTERCHANGE	SN 021-0010 - US 36 INTERCHANGE	29.59	0.69		1.16		0.61		RURAL	DOUGLAS
157	NB RAMPS	EXIT 212 - US 36 INTERCHANGE	EXIT 212 - US 36 INTERCHANGE	2.25	0.05		0.09		0.05		RURAL	DOUGLAS
157	SB RAMPS	EXIT 212 - US 36 INTERCHANGE	EXIT 212 - US 36 INTERCHANGE	2.24	0.05		0.09		0.05		RURAL	DOUGLAS
157	NB	SN 021-0009 - US 36 INTERCHANGE	CHAMPAIGN COUNTY LINE	21.99	0.52		0.86		0.45		RURAL	DOUGLAS
157	SB	SN 021-0010 - US 36 INTERCHANGE	CHAMPAIGN COUNTY LINE	21.99	0.52		0.86		0.45		RURAL	DOUGLAS
TOTAL =				103.40	2.94		4.90		2.59			
				ACRES	GALLON	GALLON	GALLON	GALLON	POUND	POUND		
					(RURAL)	(URBAN)	(RURAL)	(URBAN)	(RURAL)	(URBAN)		

MODEL: I:\MODEL\MMF5  
 FILE: MMF5 - 20210815.dwg  
 PROJECT: D:\Projects\2021\0815\CD\Drawings\057085-shs-Schedule of Quantities.dgn

USER NAME = plersonbr	DESIGNED -	REVISED -
	DRAWN -	REVISED -
PLOT SCALE = 40,0000 * / in.	CHECKED -	REVISED -
PLOT DATE = 11/15/2021	DATE -	REVISED -

**STATE OF ILLINOIS  
DEPARTMENT OF TRANSPORTATION**

**SCHEDULE OF QUANTITIES**

SCALE: NONE    SHEET 3 OF 9 SHEETS    STA.    TO STA.

F.A. RTE.	SECTION	COUNTY	TOTAL SHEETS	SHEET NO.
VAR.	*	VARIOUS	17	11
* D5 WEED SPRAYING 2022-1		CONTRACT NO. 70F85		
ILLINOIS		FED. AID PROJECT		

# SCHEDULE OF QUANTITIES

## MCLEAN COUNTY

ROUTE	LOCATION	STARTING LOCATION	ENDING LOCATION	ESTIMATED AREA	X0322294	X0322294	X0325947	X0325947	K0029636	K0029636	URBAN/RURAL	COUNTY
					PLATEAU HERBICIDE (3 oz/acre)	PLATEAU HERBICIDE (3 oz/acre)	MILESTONE VM (5 oz/acre)	MILESTONE VM (5 oz/acre)	ESCORT XP HERBICIDE (0.33 oz/acre)	ESCORT XP HERBICIDE (0.33 oz/acre)		
I-74	WB	WOODFORD CO LINE	CARLOCK INT	4.17	0.10		0.16		0.09		RURAL	MCLEAN
I-74	EB	WOODFORD CO LINE	CARLOCK INT	4.17	0.10		0.16		0.09		RURAL	MCLEAN
I-74	WB RAMPS	CARLOCK INT	CARLOCK INT	1.18	0.03		0.05		0.02		RURAL	MCLEAN
I-74	EB RAMPS	CARLOCK INT	CARLOCK INT	1.33	0.03		0.05		0.03		RURAL	MCLEAN
I-74	WB	CARLOCK INT	US 150 INT	18.84	0.44		0.74		0.39		RURAL	MCLEAN
I-74	EB	CARLOCK INT	US 150 INT	18.84	0.44		0.74		0.39		RURAL	MCLEAN
I-74	NW RAMP US 150 INT	I74 WB	US 150	0.57	0.01		0.02		0.01		RURAL	MCLEAN
I-74	SW RAMP US 150 INT	I74 EB	US 150	1.06	0.02		0.04		0.02		RURAL	MCLEAN
I-74	SE RAMP US 150 INT	I74 EB	US 150	0.40	0.01		0.02		0.01		RURAL	MCLEAN
I-74	NE RAMP US 150 INT	I74 WB	US 150	1.00	0.02		0.04		0.02		RURAL	MCLEAN
I-74	WB	US 150 INT	SN 057-0105 OVERHEAD	4.91	0.12		0.19		0.10		RURAL	MCLEAN
I-74	EB	US 150 INT	SN 057-0105 OVERHEAD	4.91	0.12		0.19		0.10		RURAL	MCLEAN
I-74	EB	SN 057-0105 OVERHEAD	EXIT 127	1.41		0.03		0.06		0.03	URBAN	MCLEAN
I-74	WB	SN 057-0105 OVERHEAD	EXIT 163 MERGE	2.98		0.07		0.12		0.06	URBAN	MCLEAN
I-74	EB	I55/I74 SPLIT - EXIT 127	I55/I74 MERGE	2.25		0.05		0.09		0.05	URBAN	MCLEAN
I74	EB	I55/I74 SPLIT - EXIT 127	I55 MERGE	3.86		0.09		0.15		0.08	URBAN	MCLEAN
I74	WB	EXIT 163 MERGE	EXIT 163 SB	1.15		0.03		0.04		0.02	URBAN	MCLEAN
I74	WB	EXIT 163 MERGE	EXIT 163 NB	2.61		0.06		0.10		0.05	URBAN	MCLEAN
I74/I55	SB/NB	I74/I55 MERGE	RAAB RD	0.35		0.01		0.01		0.01	URBAN	MCLEAN
I74/I55	SB/NB	RAAB RD	MARKET ST INT	10.66		0.25		0.42		0.22	URBAN	MCLEAN
I74/I55	SB RAMPS	MARKET ST INT	MARKET ST INT	2.16		0.05		0.08		0.04	URBAN	MCLEAN
I74/I55	NB RAMPS	MARKET ST INT	MARKET ST INT	2.42		0.06		0.09		0.05	URBAN	MCLEAN
I74/I55	SB/NB	MARKET ST INT	SN 057-0006	9.10		0.21		0.36		0.19	URBAN	MCLEAN
I74/I55	SB	SN 057-006	I74/I55 SPLIT	1.14		0.03		0.04		0.02	URBAN	MCLEAN
I74	EB	I74/I55 SPLIT	VETERANS PKWY INT	1.70		0.04		0.07		0.04	URBAN	MCLEAN
I74	EB RAMPS	VETERANS PKWY INT	VETERANS PKWY INT	1.62		0.04		0.06		0.03	URBAN	MCLEAN
I55	SB I74/I55 SPLIT	I74/I55 SPLIT	I55/VETERANS PKWY MERGE	2.81		0.07		0.11		0.06	URBAN	MCLEAN
I55	SB I55/ VETS PKWY MERGE	I55/VETERANS PKWY MERGE	US 51/I74 EXIT	1.37		0.03		0.05		0.03	URBAN	MCLEAN
I55	NB I55 EXIT 157B	EXIT 157B	NB I74/I55 MERGE	2.95		0.07		0.12		0.06	URBAN	MCLEAN
I55	NB VETERANS PKWY	EXIT 157B	EXIT 157A	0.70		0.02		0.03		0.01	URBAN	MCLEAN
I55	EB VETS PKWY/I74 MERGE	EXIT 157A	EB I74 MERGE	1.15		0.03		0.04		0.02	URBAN	MCLEAN
VETERANS PKWY	EB VETS PKWY/EXIT 134B MERGE	EXIT 157A	SB I74 / EXIT 134B MERGE	0.61		0.01		0.02		0.01	URBAN	MCLEAN
VETERANS PKWY	EB VETERANS PKWY	SB I74 / EXIT 134B MERGE	SN 057-0251	0.17		0.00		0.01		0.00	URBAN	MCLEAN
VETERANS PKWY	WB VETERANS PKWY	SN 057-0251	I74 EXIT	0.24		0.01		0.01		0.00	URBAN	MCLEAN
I74	NB I74 - VETERANS PKWY INT	NB I74/NB I55 MERGE	NB I74 EXIT 134B	2.32		0.05		0.09		0.05	URBAN	MCLEAN
I74	SB I74 - VETERANS PKWY INT	VETERANS PKWY/EB I74 MERGE	EXIT 157A/EB I74 MERGE	0.49		0.01		0.02		0.01	URBAN	MCLEAN
I74	NB I74 - EXIT 134B RAMP	EXIT 134B	EXIT 134B/VETERANS PKWY MERGE	0.87		0.02		0.03		0.02	URBAN	MCLEAN
NB/SB VETS PKWY	SN 057-0251 TO SN 057-0254	SN 057-0251	SN 057-0254	0.43		0.01		0.02		0.01	URBAN	MCLEAN
I74	NB I74 - EXIT 134A RAMP	EXIT 134A	EXIT 134A/VETERANS PKWY MERGE	0.60		0.01		0.02		0.01	URBAN	MCLEAN
VETS PKWY	WB VETERANS PKWY	NB I74 EXIT	NB I74 MERGE	0.79		0.02		0.03		0.02	URBAN	MCLEAN
NB/SB VETS PKWY	SN 057-0251 TO SN 057-0254	SN 057-0254	NB I74 EXIT	1.94		0.05		0.08		0.04	URBAN	MCLEAN
I74/I55	NB	SN 057-0006	NB I55/I74 MERGE	1.26		0.03		0.05		0.03	URBAN	MCLEAN
I74	EB	I74 - 157A MERGE	US 51 INT	5.06		0.12		0.20		0.10	URBAN	MCLEAN
I74	WB	I74 - EXIT 134B	US 51 INT	5.10		0.12		0.20		0.11	URBAN	MCLEAN
I74	EB RAMPS	US 51 INT	US 51 INT	1.99		0.05		0.08		0.04	URBAN	MCLEAN
I74	WB RAMPS	US 51 INT	US 51 INT	1.98		0.05		0.08		0.04	URBAN	MCLEAN
I74	EB	US 51 INT	SN 057-0127 - DOWNS INT	25.55		0.60		1.00		0.53	URBAN	MCLEAN
I74	WB	US 51 INTERCHANGE	SN 057-0127 - DOWNS INT	25.55		0.60		1.00		0.53	URBAN	MCLEAN
I74	EB RAMPS	EXIT 142 DOWNS INTERCHANGE	EXIT 142 DOWNS INTERCHANGE	1.61		0.04		0.06		0.03	URBAN	MCLEAN
I74	WB RAMPS	EXIT 142 DOWNS INTERCHANGE	EXIT 142 DOWNS INTERCHANGE	1.47		0.03		0.06		0.03	URBAN	MCLEAN
I74	EB	SN 057-0127 - DOWNS INT	MP 143.47	3.85		0.09		0.15		0.08	URBAN	MCLEAN
I74	WB	SN 057-0127 - DOWNS INT	MP 143.47	3.85		0.09		0.15		0.08	URBAN	MCLEAN

MODEL: I:\MODELS\MHFE  
 FILE: MHFE - 11/15/2021  
 PROJECT: I:\PROJECTS\057085\057085\CADD\Drawings\CADD\Drawings\Schedule of Quantities.dgn

USER NAME = plersonbr	DESIGNED -	REVISED -
DRAWN -	REVISIONS -	
PLOT SCALE = 40,0000 * / in.	CHECKED -	REVISED -
PLOT DATE = 11/15/2021	DATE -	REVISED -

**STATE OF ILLINOIS  
DEPARTMENT OF TRANSPORTATION**

**SCHEDULE OF QUANTITIES**

SCALE: NONE    SHEET 4 OF 9 SHEETS    STA.    TO STA.

F.A. RTE.	SECTION	COUNTY	TOTAL SHEETS	SHEET NO.
VAR.	*	VARIOUS	17	12
* D5 WEED SPRAYING 2022-1		CONTRACT NO. 70F85		
ILLINOIS FED. AID PROJECT				



# SCHEDULE OF QUANTITIES

## MCLEAN COUNTY (CONT.)

ROUTE	LOCATION	STARTING LOCATION	ENDING LOCATION	ESTIMATED AREA	X0322294	X0322294	X0325947	X0325947	K0029636	K0029636	URBAN/ RURAL	COUNTY
					PLATEAU HERBICIDE (3 oz/acre) GALLON	PLATEAU HERBICIDE (3 oz/acre) GALLON	MILESTONE VM (5 oz/acre) GALLON	MILESTONE VM (5 oz/acre) GALLON	ESCORT XP HERBICIDE (0.33 oz/acre) POUND	ESCORT XP HERBICIDE (0.33 oz/acre) POUND		
139	NB	EXIT 164 I39 NB	SN 057-0215	3.23		0.08		0.13		0.07	URBAN	MCLEAN
139	NB	SN 057-0215	NB I39/I55 MERGE	0.59		0.01		0.02		0.01	URBAN	MCLEAN
139	NB	SB I55 EXIT 164	NB I39/I55 MERGE	0.86		0.02		0.03		0.02	URBAN	MCLEAN
139	SB	NB I55 / SB I55 SPLIT	SN 057-0214	1.59		0.04		0.06		0.03	URBAN	MCLEAN
139	SB	SN 057-0214	SB I39/ NB I55 MERGE	2.39		0.06		0.09		0.05	URBAN	MCLEAN
139	SB	NB I55 / SB I55 SPLIT	SB I39/SB I55/ SB I74 MERGE	2.16		0.05		0.08		0.04	URBAN	MCLEAN
139	NB	NB I39/55 MERGE	SN 057-0217	1.21		0.03		0.05		0.02	URBAN	MCLEAN
139	SB	NB I55 / SB I55 SPLIT	SN 057-0216	0.24		0.01		0.01		0.00	URBAN	MCLEAN
139	NB	SN 057-0217	SN 057-0213	3.68		0.09		0.14		0.08	URBAN	MCLEAN
139	SB	SN 057-0216	SN 057-0213	3.68		0.09		0.14		0.08	URBAN	MCLEAN
139	NB RAMPS	EXIT 2 JS 51 INTERCHANGE	EXIT 2 US 51 INTERCHANGE	1.39		0.03		0.05		0.03	URBAN	MCLEAN
139	SB RAMPS	EXIT 2 JS 51 INTERCHANGE	EXIT 2 US 51 INTERCHANGE	1.50		0.04		0.06		0.03	URBAN	MCLEAN
139	NB	SN 057-0213	MP 2.7	1.31		0.03		0.05		0.03	URBAN	MCLEAN
139	SB	SN 057-0213	MP 2.7	1.31		0.03		0.05		0.03	URBAN	MCLEAN
139	NB	MP 2.7	SN 057-0206	10.11	0.24		0.39		0.21		RURAL	MCLEAN
139	SB	MP 2.7	SN 057-0205	10.11	0.24		0.39		0.21		RURAL	MCLEAN
139	NB RAMPS	EXIT 5 HUDSON INTERCHANGE	EXIT 5 HUDSON INTERCHANGE	1.82	0.04		0.07		0.04		RURAL	MCLEAN
139	SB RAMPS	EXIT 5 HUDSON INTERCHANGE	EXIT 5 HUDSON INTERCHANGE	1.84	0.04		0.07		0.04		RURAL	MCLEAN
139	NB	SN 057-0206	SN 057-0204	11.15	0.26		0.44		0.23		RURAL	MCLEAN
139	SB	SN 057-0205	SN 057-0204	11.15	0.26		0.44		0.23		RURAL	MCLEAN
139	NB RAMPS	EXIT 8 IL 251 INTERCHANGE	EXIT 8 IL 251 INTERCHANGE	1.39	0.03		0.05		0.03		RURAL	MCLEAN
139	SB RAMPS	EXIT 8 IL 251 INTERCHANGE	EXIT 8 IL 251 INTERCHANGE	1.51	0.04		0.06		0.03		RURAL	MCLEAN
139	NB	SN 057-0204	END OF MEDIAN N OF SN 057-0204	0.43	0.01		0.02		0.01		RURAL	MCLEAN
139	SB	SN 057-0204	END OF MEDIAN N OF SN 057-0204	0.43	0.01		0.02		0.01		RURAL	MCLEAN
139	NB	END OF MEDIAN N OF SN 057-0204	WOODFORD COUNTY LINE	1.60	0.04		0.06		0.03		RURAL	MCLEAN
139	SB	END OF MEDIAN N OF SN 057-0204	WOODFORD COUNTY LINE	1.60	0.04		0.06		0.03		RURAL	MCLEAN
US 51	NB	I74 / US 51 INT RAMPS	400 FT SOUTH OF QUEST DRIVE	0.58		0.01		0.02		0.01	URBAN	MCLEAN
US 51	SB	I74 / US 51 INT RAMPS	400 FT SOUTH OF QUEST DRIVE	0.58		0.01		0.02		0.01	URBAN	MCLEAN
US 51	NB	400 FT SOUTH OF QUEST DRIVE	E 925 N	2.09		0.05		0.08		0.04	URBAN	MCLEAN
US 51	SB	400 FT SOUTH OF QUEST DRIVE	E 925 N	2.09		0.05		0.08		0.04	URBAN	MCLEAN
US 51	NB	E 925 N	1400 FT SOUTH OF E 800 N	5.49		0.13		0.21		0.11	URBAN	MCLEAN
US 51	SB	E 925 N	1400 FT SOUTH OF E 800 N	5.49		0.13		0.21		0.11	URBAN	MCLEAN
US 51	NB	1400 FT SOUTH OF E 800 N	US 136 INTERCHANGE	21.20	0.50		0.83		0.44		RURAL	MCLEAN
US 51	SB	1400 FT SOUTH OF E 800 N	US 136 INTERCHANGE	21.20	0.50		0.83		0.44		RURAL	MCLEAN
US 51	NB RAMPS	US 136 INTERCHANGE	US 136 INTERCHANGE	1.38	0.03		0.05		0.03		RURAL	MCLEAN
US 51	SB RAMPS	US 136 INTERCHANGE	US 136 INTERCHANGE	1.38	0.03		0.05		0.03		RURAL	MCLEAN
US 51	NB	US 136 INTERCHANGE	MCLEAN / DEWITT COUNTY LINE	8.11	0.19		0.32		0.17		RURAL	MCLEAN
US 51	SB	US 136 INTERCHANGE	MCLEAN / DEWITT COUNTY LINE	8.11	0.19		0.32		0.17		RURAL	MCLEAN
TOTAL =				750.35	11.17	6.41	18.62	10.69	9.83	5.64		
				ACRES	GALLON	GALLON	GALLON	GALLON	POUND	POUND		
					(RURAL)	(URBAN)	(RURAL)	(URBAN)	(RURAL)	(URBAN)		

MODEL: I:\MODEL\MHFE  
 FILE: MHFE\_Plan\Public\paw\_bendley.com\FW\DOT\Documents\DOT\_Offices\Dir\dir\_5\Project\057085\Cadd\Drawn\Cadd\Sheet\057085-sh-Schedule of Quantities.dgn

USER NAME = plersonbr	DESIGNED -	REVISED -
	DRAWN -	REVISED -
PLOT SCALE = 40,0000 * / in.	CHECKED -	REVISED -
PLOT DATE = 11/15/2021	DATE -	REVISED -

**STATE OF ILLINOIS  
DEPARTMENT OF TRANSPORTATION**

**SCHEDULE OF QUANTITIES**

SCALE: NONE    SHEET 6 OF 9 SHEETS    STA.    TO STA.

F.A. RTE.	SECTION	COUNTY	TOTAL SHEETS	SHEET NO.
VAR.	*	VARIOUS	17	14
* D5 WEED SPRAYING 2022-1		CONTRACT NO. 70F85		
ILLINOIS   FED. AID PROJECT				

# SCHEDULE OF QUANTITIES

## PIATT COUNTY

ROUTE	LOCATION	STARTING LOCATION	ENDING LOCATION	ESTIMATED AREA	X0322294	X0322294	X0325947	X0325947	K0029636	K0029636	URBAN/ RURAL	COUNTY
					PLATEAU HERBICIDE (3 oz/acre)	PLATEAU HERBICIDE (3 oz/acre)	MILESTONE VM (5 oz/acre)	MILESTONE VM (5 oz/acre)	ESCORT XP HERBICIDE (0.33 oz/acre)	ESCORT XP HERBICIDE (0.33 oz/acre)		
172	EB RAMP	MACON COUNTY LINE	172 MERGE	0.85	0.02		0.03		0.02		RURAL	PIATT
172	WB RAMP	MACON COUNTY LINE	172 MERGE	0.84	0.02		0.03		0.02		RURAL	PIATT
172	EB	MACON COUNTY LINE	MP 162.98	25.90	0.61		1.01		0.53		RURAL	PIATT
172	WB	MACON COUNTY LINE	MP 162.98	25.90	0.61		1.01		0.53		RURAL	PIATT
172	EB	MP 162.98	SN 074-0065 - BRIDGE ST INT	3.49		0.08		0.14		0.07	JRBAN	PIATT
172	WB	MP 162.98	SN 074-0065 - BRIDGE ST INT	3.49		0.08		0.14		0.07	JRBAN	PIATT
172	EB RAMPS	EXIT 164 - BRIDGE ST INT	EXIT 164 - BRIDGE ST INT	1.64		0.04		0.06		0.03	JRBAN	PIATT
172	WB RAMPS	EXIT 164 - BRIDGE ST INT	EXIT 164 - BRIDGE ST INT	1.65		0.04		0.06		0.03	JRBAN	PIATT
172	EB	SN 074-0065 - BRIDGE ST INT	SN 074-0071 - IL 105 INT	7.26		0.17		0.28		0.15	JRBAN	PIATT
172	WB	SN 074-0065 - BRIDGE ST INT	SN 074-0071 - IL 105 INT	7.26		0.17		0.28		0.15	JRBAN	PIATT
172	EB RAMPS	EXIT 166 - IL 105 INT	EXIT 166 - IL 105 INT	2.57		0.06		0.10		0.05	JRBAN	PIATT
172	WB RAMPS	EXIT 166 - IL 105 INT	EXIT 166 - IL 105 INT	1.68		0.04		0.07		0.03	JRBAN	PIATT
172	EB	SN 074-0071 - IL 105 INT	MP 167.58	5.68		0.13		0.22		0.12	JRBAN	PIATT
172	WB	SN 074-0071 - IL 105 INT	MP 167.58	5.68		0.13		0.22		0.12	JRBAN	PIATT
172	EB	MP 167.58	SN 074-0026 - WHITE HEATH RD INT	5.26	0.12		0.21		0.11		RURAL	PIATT
172	WB	MP 167.58	SN 074-0026 - WHITE HEATH RD INT	5.26	0.12		0.21		0.11		RURAL	PIATT
172	EB RAMPS	EXIT 169 - WHITE HEATH RD INT	EXIT 169 - WHITE HEATH RD INT	1.62	0.04		0.06		0.03		RURAL	PIATT
172	WB RAMPS	EXIT 169 - WHITE HEATH RD INT	EXIT 169 - WHITE HEATH RD INT	1.39	0.03		0.05		0.03		RURAL	PIATT
172	EB	SN 074-0026 - WHITE HEATH RD INT	SN 074-0007 - IL 10 INT	9.32	0.22		0.36		0.19		RURAL	PIATT
172	WB	SN 074-0026 - WHITE HEATH RD INT	SN 074-0007 - IL 10 INT	9.32	0.22		0.36		0.19		RURAL	PIATT
172	EB RAMPS	EXIT 172 - IL 10 INTER	EXIT 172 - IL 10 INT	1.40	0.03		0.05		0.03		RURAL	PIATT
172	WB RAMPS	EXIT 172 - IL 10 INT	EXIT 172 - IL 10 INT	1.40	0.03		0.05		0.03		RURAL	PIATT
172	EB	SN 074-0007 - IL 10 INT	CHAMPAIGN COUNTY LINE	6.64	0.16		0.26		0.14		RURAL	PIATT
172	WB	SN 074-0007 - IL 10 INT	CHAMPAIGN COUNTY LINE	6.64	0.16		0.26		0.14		RURAL	PIATT
174	EB	DEWITT COUNTY LINE	SN 074-0044 - MANSFIELD INT	21.59	0.51		0.84		0.45		RURAL	PIATT
174	WB	DEWITT COUNTY LINE	SN 074-0044 - MANSFIELD INT	21.59	0.51		0.84		0.45		RURAL	PIATT
174	EB RAMPS	EXIT 166 - MANSFIELD INT	EXIT 166 - MANSFIELD INT	1.61	0.04		0.06		0.03		RURAL	PIATT
174	WB RAMPS	EXIT 166 - MANSFIELD INT	EXIT 166 - MANSFIELD INT	1.58	0.04		0.06		0.03		RURAL	PIATT
174	EB	SN 074-0044 - MANSFIELD INT	CHAMPAIGN COUNTY LINE	7.29	0.17		0.28		0.15		RURAL	PIATT
174	WB	SN 074-0044 - MANSFIELD INT	CHAMPAIGN COUNTY LINE	7.29	0.17		0.28		0.15		RURAL	PIATT
TOTAL =				203.11	3.81	0.95	6.36	1.58	3.36	0.83		
				ACRES	GALLON	GALLON	GALLON	GALLON	POUND	POUND		
					(RURAL)	(URBAN)	(RURAL)	(URBAN)	(RURAL)	(URBAN)		

MODEL: I:\MODELS\MHFE  
 FILE: MHFE\_Plan\Subarea\benefits.com\FIN\DOT\Documents\DOT\_Offices\Dir\dir\_5\Project\0570855\CADD\data\CAD\sheet\0570855-shs-Schedule of Quantities.dgn

USER NAME = plersonbr	DESIGNED -	REVISED -
	DRAWN -	REVISED -
PLOT SCALE = 40,0000 * / in.	CHECKED -	REVISED -
PLOT DATE = 11/15/2021	DATE -	REVISED -

**STATE OF ILLINOIS  
DEPARTMENT OF TRANSPORTATION**

**SCHEDULE OF QUANTITIES**

SCALE: NONE    SHEET 7 OF 9 SHEETS    STA.    TO STA.

F.A. RTE.	SECTION	COUNTY	TOTAL SHEETS	SHEET NO.
VAR.	*	VARIOUS	17	15
* D5 WEED SPRAYING 2022-1		CONTRACT NO. 70F85		
ILLINOIS		FED. AID PROJECT		



# SCHEDULE OF QUANTITIES

## TOTALS

COUNTY	ESTIMATED AREA	PLATEAU HERBICIDE (3 oz/acre)	PLATEAU HERBICIDE (3 oz/acre)	MILESTONE VM (5 oz/acre)	MILESTONE VM (5 oz/acre)	ESCORT XP HERBICIDE (0.33 oz/acre)	ESCORT XP HERBICIDE (0.33 oz/acre)
	ACRES	GALLON	GALLON	GALLON	GALLON	POUND	POUND
CHAMPAIGN	611.49	6.87	7.46	11.45	12.44	6.04	6.57
DEWITT	157.87	2.46	1.24	4.11	2.06	2.17	1.09
DOUGLAS	103.40	2.94		4.90		2.59	
MCLEAN	750.35	11.17	6.41	18.62	10.69	9.83	5.64
PIATT	203.11	3.81	0.95	6.36	1.58	3.36	0.83
VERMILION	177.74	2.28	1.89	3.79	3.15	2.00	1.66
<b>TOTAL =</b>	<b>2003.97</b>	<b>29.53</b>	<b>17.95</b>	<b>49.22</b>	<b>29.92</b>	<b>25.99</b>	<b>15.80</b>
<b>USE =</b>	<b>2004.00</b>	<b>30.00</b>	<b>18.00</b>	<b>50.00</b>	<b>30.00</b>	<b>26.00</b>	<b>16.00</b>
	ACRES	RURAL	URBAN	RURAL	URBAN	RURAL	URBAN

## FINAL TOTALS

	PLATEAU HERBICIDE (3 oz/acre)	MILESTONE VM (5 oz/acre)	ESCORT XP HERBICIDE (0.33 oz/acre)
RURAL TOTAL =	30.00	50.00	26.00
URBAN TOTAL =	18.00	30.00	16.00
FINAL TOTAL =	48.00	80.00	42.00
	GALLONS	GALLONS	POUNDS

MODEL: \\MODEL\MAME  
 FILE: \\MAILS\_PUB\Public\paw\_bentley.com\PIV\DOT\Documents\DOT\_Offices\Dir\dr\_5\Project\057085\CADD\data\CAD\sheet\057085-sh-Schedule of Quantities.dgn

	USER NAME = plersonbr	DESIGNED -	REVISED -	<b>STATE OF ILLINOIS DEPARTMENT OF TRANSPORTATION</b>	<b>SCHEDULE OF QUANTITIES</b>	F.A. RTE.	SECTION	COUNTY	TOTAL SHEETS	SHEET NO.
		DRAWN -	REVISED -			VAR.	*	VARIOUS	17	17
	PLOT SCALE = 40,0000 * / in.	CHECKED -	REVISED -			* D5 WEED SPRAYING 2022-1		CONTRACT NO. 70F85		
	PLOT DATE = 11/15/2021	DATE -	REVISED -		SCALE: NONE	SHEET 9	OF 9	SHEETS	STA.	TO STA.
										ILLINOIS FED. AID PROJECT