

03-11-2022 LETTING ITEM 059

FOR INDEX OF SHEETS, SEE SHEET NO. 2  
FOR SUMMARY OF QUANTITIES, SEE SHEET NO. 3

STATE OF ILLINOIS  
DEPARTMENT OF TRANSPORTATION

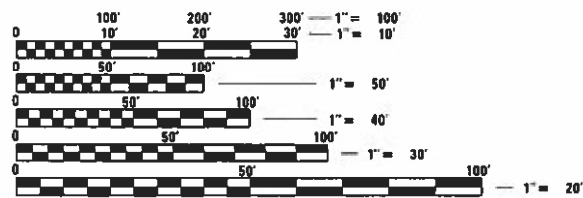
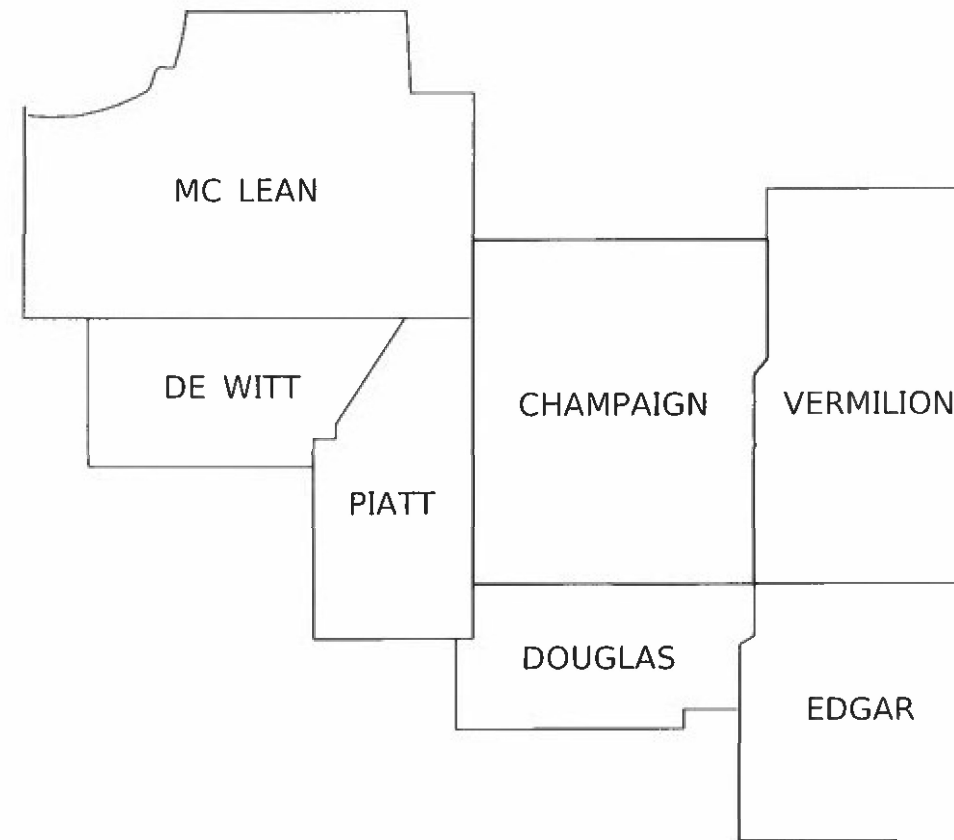
F.A. RTE.	SECTION	COUNTY	TOTAL SHEETS	SHEET NO.
VAR.	D5 SWZT 2022-1	VARIOUS	4	1
		ILLINOIS	CONTRACT NO. 70F86	

# PROPOSED HIGHWAY PLANS

VARIOUS ROUTES  
SECTION D5 SWZT 2022-1  
MIS TRAFFIC CONTROL  
PROJECT: HSIP-P5L6(182)  
VARIOUS COUNTIES

C-95-040-22

DISTRICTWIDE SMART WORK ZONE TECHNOLOGY

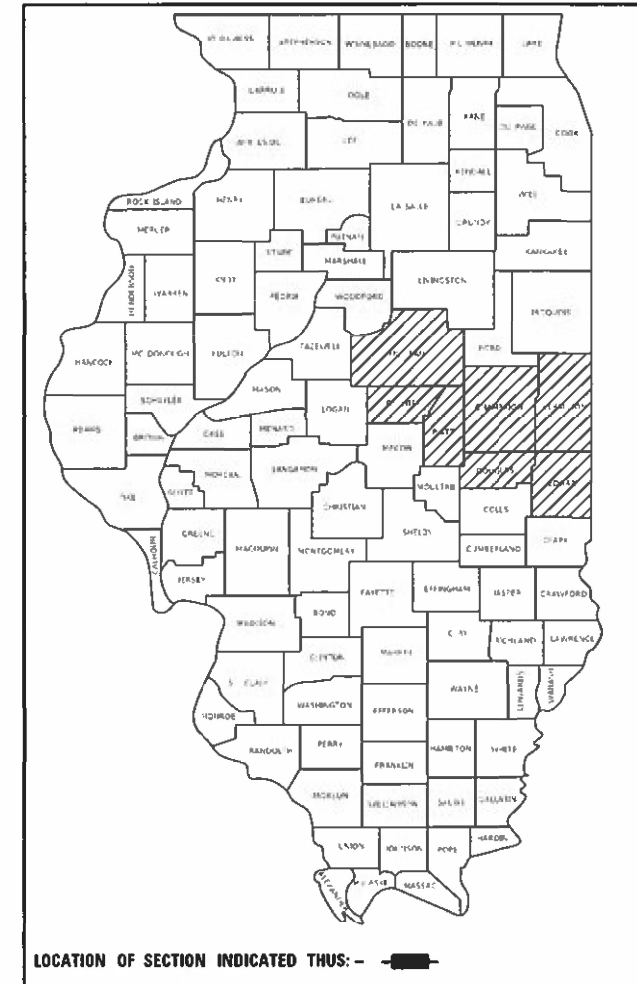


FULL SIZE PLANS HAVE BEEN PREPARED USING STANDARD ENGINEERING SCALES. REDUCED SIZED PLANS WILL NOT CONFORM TO STANDARD SCALES. IN MAKING MEASUREMENTS ON REDUCED PLANS, THE ABOVE SCALES MAY BE USED.

J.U.L.I.E.  
JOINT UTILITY LOCATION INFORMATION FOR EXCAVATORS  
1-800-892-0123  
OR 811

PROJECT ENGINEER: RYAN T. CARROLL  
DESIGNER: TYLER PIERSON  
PHONE: 217-465-4181  
CONTRACT NO. 70F86

P-95-007-22



LOCATION OF SECTION INDICATED THUS: - [shaded box] -

STATE OF ILLINOIS  
DEPARTMENT OF TRANSPORTATION

SUBMITTED 12/15 2021  
*Kennil A. Hennetson*  
REGIONAL ENGINEER

February 4 2022  
*[Signature]*  
ENGINEER OF DESIGN AND ENVIRONMENT

February 4 2022  
*Stephen M. Smith*  
DIRECTOR OF HIGHWAYS PROJECT IMPLEMENTATION

PRINTED BY THE AUTHORITY  
OF THE STATE OF ILLINOIS

## INDEX OF SHEETS

<u>DESCRIPTION</u>	<u>SHEET NO.</u>
COVER	1
INDEX OF SHEETS, LIST OF HIGHWAY STANDARDS, & COMMITMENTS	2
SUMMARY OF QUANTITIES	3
REAL-TIME TRAFFIC CONTROL SYSTEM	4

## GENERAL NOTES

THERE ARE NO GENERAL NOTES FOR THIS CONTRACT

## LIST OF STANDARDS

<u>STANDARD NO.</u>	<u>DESCRIPTION</u>
000001-08	STANDARD SYMBOLS, ABBREVIATIONS AND PATTERNS
001006	DECIMAL OF AN INCH AND OF A FOOT
701101-05	OFF-ROAD OPERATIONS, MULTILANE, 15' (4.5 M) TO 24" (600 MM) FROM PAVEMENT
701106-02	OFF-ROAD OPERATIONS, MULTILANE, MORE THAN 15' (4.5 M) AWAY
701400-11	APPROACH TO LANE CLOSURE, FREEWAY/EXPRESSWAY
701428-01	TRAFFIC CONTROL, SETUP AND REMCVL, FREEWAY/EXPRESSWAY
701901-08	TRAFFIC CONTROL DEVICES

## COMMITMENTS

THERE ARE NO COMMITMENTS FOR THIS CONTRACT

MODEL: \\MODEL\MAME  
 FILE: \\MAILS\_PUB\Public\paw\_bentley.com\PW\DOT\Documents\DOT Office\Dir\dir: S:\Project\05708686\CADD\data\CAD\sheet\05708686\Index\_Standards\_General Notes\_ & Commitments.dgn

USER NAME = PjersonTJ	DESIGNED -	REVISED -
	DRAWN -	REVISED -
PLOT SCALE = 40,0000 */ in.	CHECKED -	REVISED -
PLOT DATE = 12/15/2021	DATE -	REVISED -

**STATE OF ILLINOIS  
DEPARTMENT OF TRANSPORTATION**

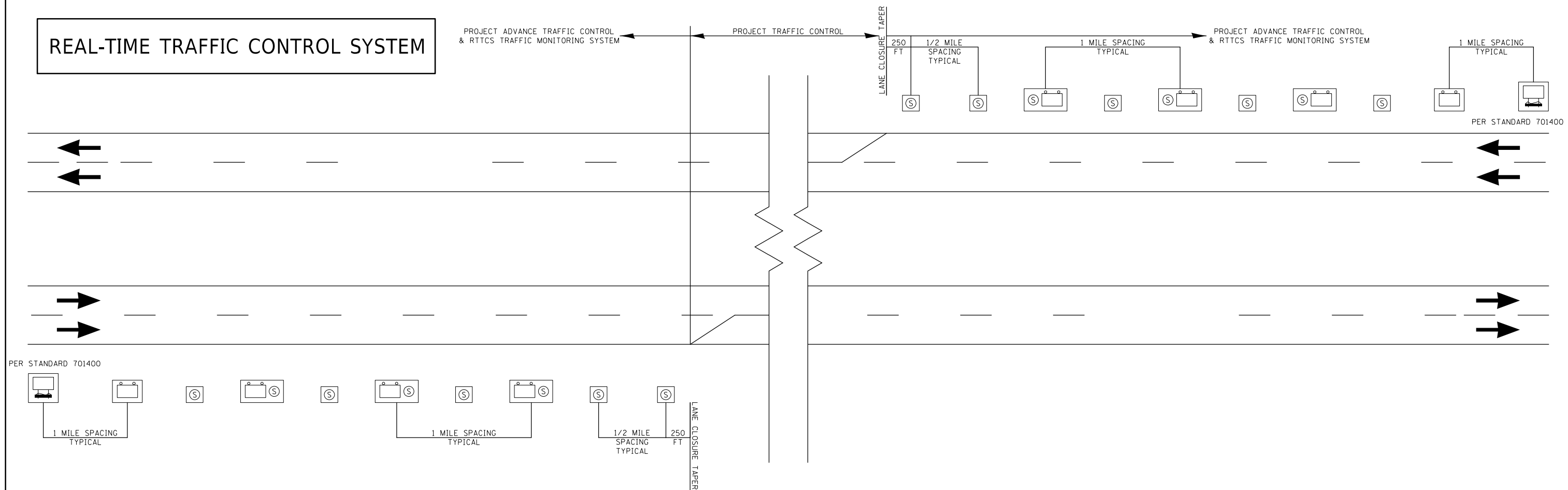
**INDEX OF SHEETS, LIST OF STANDARDS,  
GENERAL NOTES, AND COMMITMENTS**

SCALE: SHEET 1 OF 1 SHEETS STA. TO STA.

F.A. RTE.	SECTION	COUNTY	TOTAL SHEETS	SHEET NO.
VAR.	D5 SWZT 2022-1	VARIOUS	4	2
			CONTRACT NO. 70F86	
		ILLINOIS	FED. AID PROJECT	



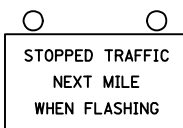
# REAL-TIME TRAFFIC CONTROL SYSTEM



## LEGEND



REAL-TIME TRAFFIC CONTROL WARNING SIGN  
PROJECT SIGN SHALL BE A 48" X 96" (1200MM X 2400MM)  
SIGN THAT SAYS  
"STOPPED TRAFFIC NEXT MILE WHEN FLASHING".



SINGLE PORTABLE CHANGEABLE MESSAGE SIGN PLACED 1 MILE  
IN ADVANCE OF THE REAL-TIME TRAFFIC CONTROL WARNING SIGN.  
IT SHALL READ: "RIGHT/LEFT LANE CLOSED // X MILES AHEAD"  
THIS PORTABLE CHANGEABLE MESSAGE SIGN IS INCLUDED IN STANDARD 701400



REAL-TIME TRAFFIC MONITORING SENSOR UNIT

### NOTE:

1. THE NUMBER OF REAL-TIME TRAFFIC CONTROL WARNINGS SIGNS MAY BE CHANGED AS DIRECTED BY THE ENGINEER. RELOCATION OF REAL-TIME TRAFFIC CONTROL STATIC WARNING SIGNS IS INCLUDED IN THE REAL-TIME TRAFFIC CONTROL PAY ITEMS.
2. REAL-TIME TRAFFIC CONTROL MONITORING SENSOR UNITS SPACED APPROXIMATELY EVERY 1/2 MILE AND REAL-TIME TRAFFIC CONTROL WARNING SIGNS SPACED EVERY 1 MILE OR AS DIRECTED BY THE ENGINEER.
3. THE FIRST REAL-TIME TRAFFIC MONITORING SENSORS UNIT IS TO BE PLACED 250 FOOT UPSTREAM OF THE TAPER.
4. THE SECOND REAL-TIME SPEED TRAFFIC MONITORING SENSOR UNIT IS TO BE PLACED 250 FOOT IN ADVANCE OF THE RIGHT LANE/LEFT LANE CLOSED 1/2 MILE SIGN (STD. 701400).
5. THE FIRST REAL-TIME TRAFFIC CONTROL WARNINGS SIGN SHOULD BE PLACED 500 FOOT IN ADVANCE OF THE RIGHT/LEFT LANE CLOSED 1 MILE SIGN (STD. 701400)
6. THE NUMBER OF RTTCS DEVICES MAY BE REDUCED BASED ON THE LOCATION OF THE PORTABLE CHANGEABLE MESSAGE SIGN PER (STD. 701400) AS DIRECTED BY THE ENGINEER.

MODEL: I:\MODEL\MMF5  
FILE: MMF5.dwg  
PLOT DATE: 12/15/2021  
PROJECT: D5 SWZT 2022-1  
SHEET: 4 OF 4  
CONTRACT: 70F86

USER NAME = P1ersonTJ	DESIGNED -	REVISED -
PLOT SCALE = 1000.0000 ' / in.	DRAWN -	REVISED -
PLOT DATE = 12/15/2021	CHECKED -	REVISED -
	DATE -	REVISED -

**STATE OF ILLINOIS  
DEPARTMENT OF TRANSPORTATION**

**REAL-TIME TRAFFIC CONTROL SYSTEM**

SCALE: N.T.S. SHEET 1 OF 1 SHEETS STA. TO STA.

F.A. RTE.	SECTION	COUNTY	TOTAL SHEETS	SHEET NO.
	D5 SWZT 2022-1	VARIOUS	4	4
			CONTRACT NO. 70F86	
ILLINOIS FED. AID PROJECT				