

STATE OF ILLINOIS
DEPARTMENT OF TRANSPORTATION

F.A.P. RTE.	SECTION	COUNTY	TOTAL SHEETS	SHEET NO.
614	(144)Q, (145)Q, PP-1	CASS	26	1
		ILLINOIS	CONTRACT NO. 72M23	

D-96-093-20

FOR INDEX OF SHEETS, SEE SHEET NO. 2

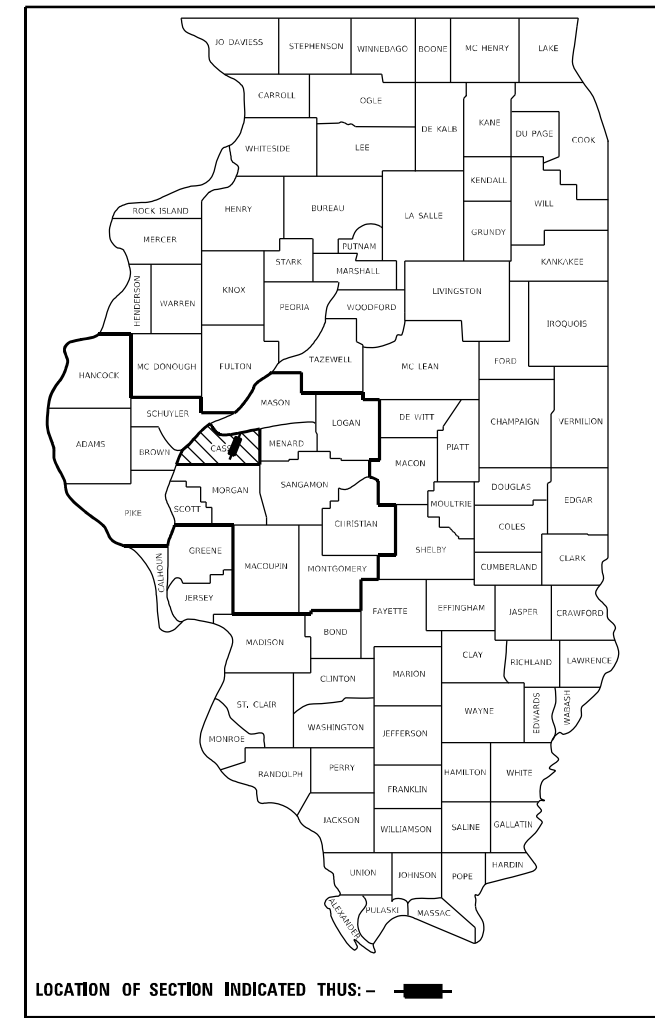
HIGHWAY CLASSIFICATION

F.A.P. Route 614 (IL 78)
fr. Mason County Line to
0.1 MI N of IL 125 in VIRGINIA
CLASSIFICATION: MINOR ARTERIAL (NON-URBAN)

ADT: 1,573 (2019)
DESIGN SPEED: 60 MPH
POSTED SPEED: 55 MPH

PROPOSED
HIGHWAY PLANS

FAP ROUTE 614 (IL 78)
SECTION (144)Q, (145)Q, PP-1
PROJECT COVD-TTTC(268)
CAPE SEAL, GRINDING,
PATCHING, & FOG SEAL
CASS COUNTY



LOCATION OF SECTION INDICATED THUS: - ■ -

S.N. 009-0510
(over Sangamon River)
☉ STA. 913+26.00

LIMITS OF IMPROVEMENT
BEGINS AT STA. 922+65.45

S.N. 009-2509
Exist. Box 10'x10'
☉ STA. 935+35.00

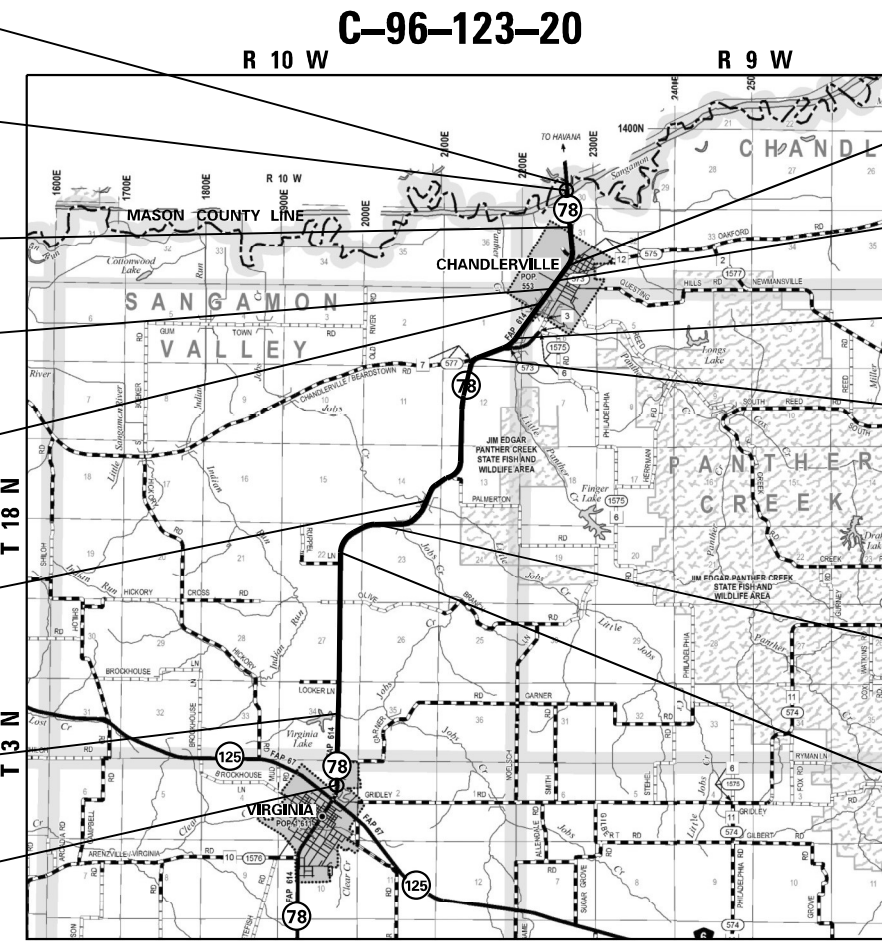
S.N. 009-2511
Exist. Box 2-12'x7'
☉ STA. 992+03.00

(BRIDGE OMISSION #1):
S.N. 009-0512
(over Panther Crk)
996+45.79 TO 998+34.21

(BRIDGE OMISSION #2):
S.N. 009-0013
(over Little Jobs Crk)
STA. 136+93.20 TO 138+51.20

S.N. 009-7014
Exist. Box 10'x10'
☉ STA. 310+63.69

LIMITS OF IMPROVEMENT
ENDS AT STA. 365+00.00



(STA EQN #1):
STA. 960+29.18 (BK) =
STA. 960+27.54 (AH)

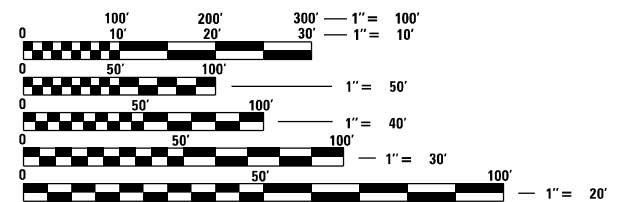
(STA EQN #2):
STA. 980+28.71 (BK) =
STA. 980+30.00 (AH)

(STA EQN #3):
STA. 1039+14.56 (BK) =
STA. 17+05.91 (AH)

S.N. 009-7013
Exist. Box 5'x4'
☉ STA. 29+71.17

(STA EQN #4):
STA. 187+34.74 (BK) =
STA. 181+09.77 (AH)

(STA EQN #5):
STA. 206+38.90 (BK) =
STA. 206+10.30 (AH)



FULL SIZE PLANS HAVE BEEN PREPARED USING STANDARD ENGINEERING SCALES, REDUCED SIZED PLANS WILL NOT CONFORM TO STANDARD SCALES. IN MAKING MEASUREMENTS ON REDUCED PLANS, THE ABOVE SCALES MAY BE USED.

J.U.L.I.E.
JOINT UTILITY LOCATION INFORMATION FOR EXCAVATORS
1-800-892-0123
OR 811

PROJECT ENGINEER: BRIAN LANINGHAM (217) 782-6990
TEAM ENGINEER: RENE CABRERA (217) 558-5140

GROSS LENGTH = 47,097.02 FT = 8.92 MI
NET LENGTH = 46,750.60 FT = 8.85 MI

CONTRACT NO. 72M23

STATE OF ILLINOIS
DEPARTMENT OF TRANSPORTATION

SUBMITTED December 17 20 21

[Signature] REGIONAL ENGINEER

February 4 20 22

[Signature] ENGINEER OF DESIGN AND ENVIRONMENT

February 4 20 22

[Signature] DIRECTOR OF HIGHWAYS PROJECT IMPLEMENTATION 2

PRINTED BY THE AUTHORITY
OF THE STATE OF ILLINOIS

GENERAL NOTES

GENERAL NOTES

- ① THE EXACT LOCATIONS AND SIZES OF PAVEMENT PATCHES SHALL BE DETERMINED BY THE ENGINEER IN THE FIELD.
- ② THE CONTRACTOR SHALL NOTIFY THE DISTRICT 6 BUREAU OF OPERATIONS AT (217) 785-5306 THREE WEEKS PRIOR TO IMPLEMENTING ANY TRAFFIC CONTROL.
- ③ NO PASSING ZONES TO BE FIELD VERIFIED BY DISTRICT 6 OPERATIONS. THE RESIDENT ENGINEER SHALL NOTIFY THE BUREAU OF OPERATIONS AT LEAST 14 DAYS PRIOR TO PLACMENT OF FINAL PERMANENT PAVEMENT MARKING (PH: 217-785-5306).
- ④ THE FOLLOWING MIXTURE REQUIREMENTS ARE APPLICABLE:

LOCATION(S):	IL 78
MIXTURE USE(S):	PATCHING
AC/PG:	PG 64-22
DESIGN AIR VOIDS	4.0% @ N design = 50
MIXTURE COMPOSITION (Gradation Mixture)	IL 19.0
FRICTION AGGREGATE	N/A
QUALITY MANAGEMENT	QC/QA
SUBLOT SIZE	1,000 TONS
MATERIAL TRANSFER DEVICE	N/A

- ⑤ AGGREGATE FOR THE A-1 BITUMINOUS SURFACE TREATMENT MAY BE CA-15, CA-16, OR CA-20.

INDEX OF SHEETS

1	COVER SHEET
2	INDEX OF SHEETS, LISTS OF STANDARDS, GENERAL NOTES AND COMMITMENTS
3 - 4	SUMMARY OF QUANTITIES
5	SCHEDULE OF QUANTITIES
6 - 10	TYPICAL SECTIONS (5)
11 - 26	PLAN SHEETS (16)

STANDARDS

000001-08	STANDARD SYMBOLS, ABBREVIATIONS, AND PATTERNS
001006	DECIMAL OF AN INCH AND OF A FOOT
701001-02	OFF-ROAD OPERATIONS, 2L, 2W, MORE THAN 15' (4.5 m) AWAY
701006-05	OFF-ROAD OPERATIONS, 2L, 2W, 15' (4.5 m) TO 24" (600 mm) FROM PAVEMENT EDGE
701201-05	LANE CLOSURE, 2L, 2W, DAY ONLY FOR SPEEDS ≥ 45 MPH
701301-04	LANE CLOSURE, 2L, 2W, SHORT TIME OPERATIONS
701306-04	LANE CLOSURE, 2L, 2W, SLOW MOVING OPERATIONS ONLY, FOR SPEEDS ≥ 45 MPH
701311-03	LANE CLOSURE, 2L, 2W, MOVING OPERATIONS - DAY ONLY
701501-06	URBAN LANE CLOSURE, 2L, 2W, UNDIVIDED
701901-08	TRAFFIC CONTROL DEVICES
780001-05	TYPICAL PAVEMENT MARKING
781001-04	TYPICAL APPLICATIONS OF RAISED REFLECTIVE PAVEMENT MARKINGS
420001-10	PAVEMENT JOINTS
442201-03	CLASS C AND D PATCHES

RATES OF APPLICATION TABLES

THE FOLLOWING RATES OF APPLICATION HAVE BEEN ASSUMED IN CALCULATING PLAN QUANTITIES.

BITUMINOUS MATERIAL (FOG SEAL): 0.08 LBS / SQ FT (FOR SHLDR)
 BITUMINOUS MATERIAL (FOG SEAL): 0.05 LBS / SQ FT (FOR MAINLINE PAVT)

COMMITMENTS

(NONE)

**STATE OF ILLINOIS
DEPARTMENT OF TRANSPORTATION
DIVISION OF HIGHWAYS
DISTRICT 6**

EXAMINED December 16 20 21

[Signature]
ENGINEER OF OPERATIONS

EXAMINED December 15 20 21

[Signature]
ENGINEER OF PROJECT IMPLEMENTATION

EXAMINED December 9 20 21

[Signature]
ENGINEER OF PROGRAM DEVELOPMENT

REV. - MS

MODEL: Default
FILE NAME: P:\Illinois\Bentley.com\PROJECTS\DOT\District6\Projects\DOT\District6\CD\Sheets\0672M23-shc-genote.dgn

USER NAME = cabrerars	DESIGNED -	REVISED -
	DRAWN -	REVISED -
PLOT SCALE = 40.0000' / in.	CHECKED -	REVISED -
PLOT DATE = 12/9/2021	DATE -	REVISED -

**STATE OF ILLINOIS
DEPARTMENT OF TRANSPORTATION**

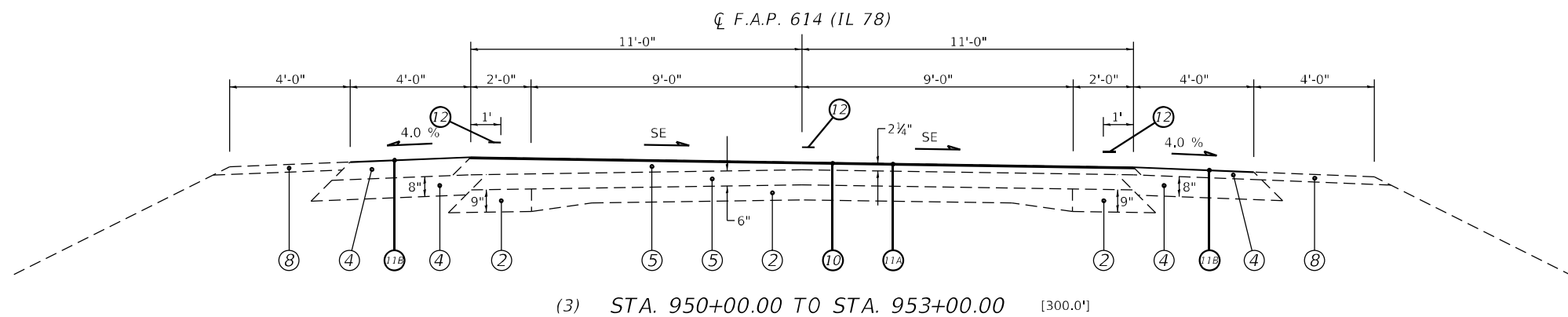
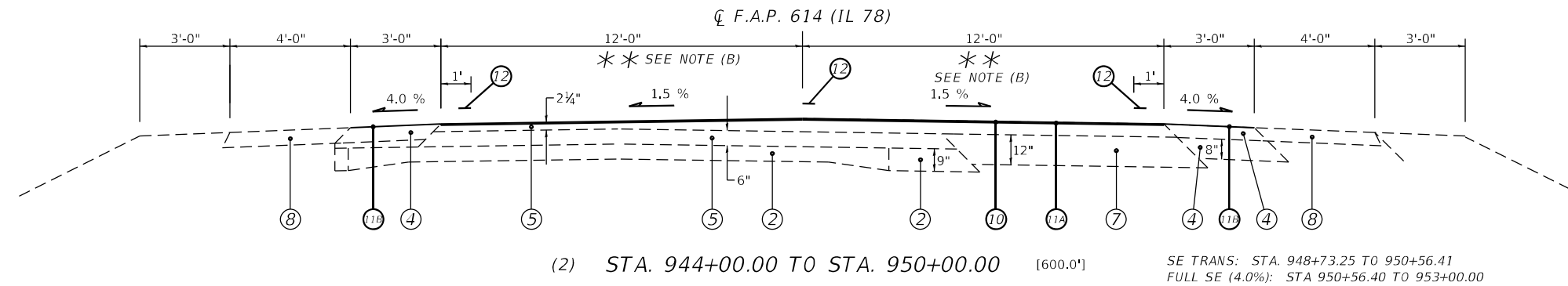
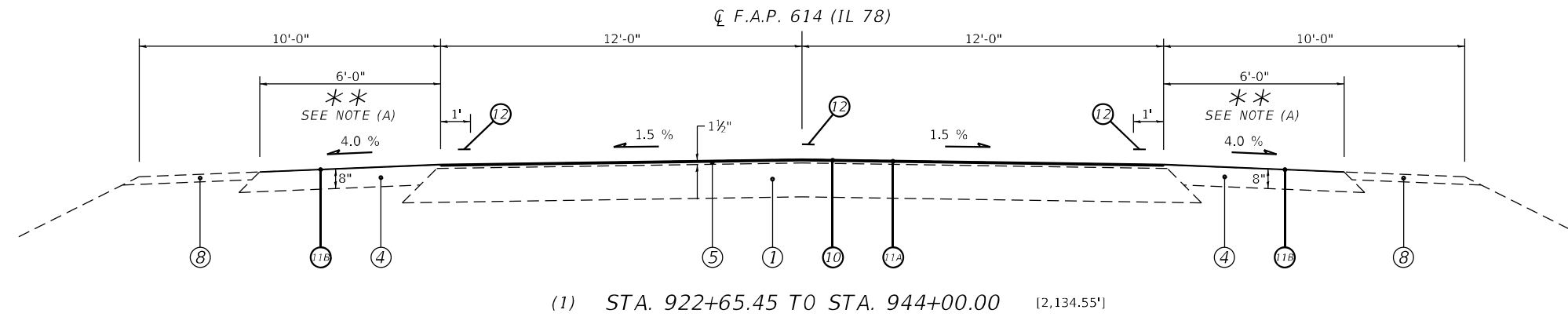
**INDEX OF SHEETS &
GENERAL NOTES**

SCALE: SHEET OF SHEETS STA. TO STA.

F.A.P. RTE.	SECTION	COUNTY	TOTAL SHEETS	SHEET NO.
614	(144)Q, (145)Q, PP-1	CASS	26	2
			CONTRACT NO. 72M23	
ILLINOIS FED. AID PROJECT				

LEGEND

- ① EXIST. HMA FULL DP PAVT, 13 1/2"
- ② EXIST. P.C.C. PAVT 9'-6"-9"
- ③ EXIST. BIT CONC BASE CSE WID, 9"
- ④ EXIST. BITUMINOUS SHOULDERS
- ⑤ EXIST. BITUMINOUS OVERLAY
- ⑥ EXIST. SUB-BASE GRAN MATL, TY A, VAR DP, (6" MIN)
- ⑦ EXIST. HMA BINDER COURSE, (2 1/4" MIN.)
- ⑧ EXIST. AGGREGATE SHOULDERS
- ⑨ EXIST. CONCRETE GUTTER, TYPE A
- ⑩ PROP. CAPE SEAL
- ⑪ PROP. BITUMINOUS MATERIALS (FOG SEAL) (ML PAVT)
- ⑫ PROP. BITUMINOUS MATERIALS (FOG SEAL) (SHLDR)
- ⑬ PROP. MODIFIED URETHANE PAVEMENT MARKING - LINE 5"



- ** NOTES:**
- (A) WIDTH OF EXIST. HMA SHLDRS VAR. FR. 6'-0" TO 3'-0" FR. STA 942+50.00 TO 944+00.00.
 - (B) PAVT WIDTH VAR. FR. 24'-0" TO 22'-0" FR. STA 948+50.00 TO 950+00.00.

MODEL: Default
 FILE: \\nafe\p\project\paw\beadefy.com\FW\DOT\Documents\DOT\Office\Dir\Dir\p\Project\0672M23\CADD\DATA\CAD\PARALLEL\0672M23-SHT1.DWG

USER NAME = cabrerars	DESIGNED - RSC	REVISED -
	DRAWN - RSC	REVISED -
PLOT SCALE = 100,0000' / in.	CHECKED -	REVISED -
PLOT DATE = 10/29/2021	DATE -	REVISED -

**STATE OF ILLINOIS
DEPARTMENT OF TRANSPORTATION**

TYPICAL SECTIONS

SCALE: NTS SHEET 1 OF 5 SHEETS STA. 922+65.45 TO STA. 953+00.00

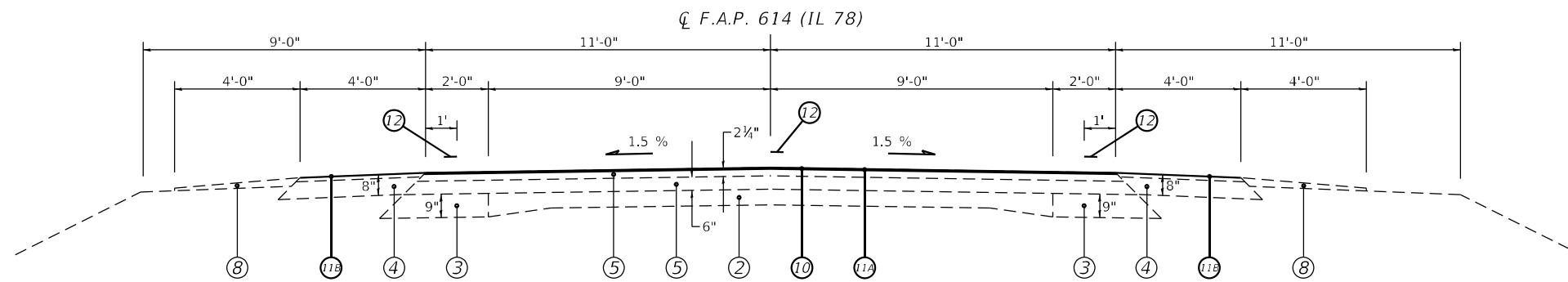
F.A.P. RTE.	SECTION	COUNTY	TOTAL SHEETS	SHEET NO.
614	(144)Q, (145)Q, PP-1	CASS	26	6
CONTRACT NO. 72M23				
ILLINOIS FED. AID PROJECT				

LEGEND

- ① EXIST. HMA FULL DP PAVT, 13 1/2"
- ② EXIST. P.C.C. PAVT 9"-6"-9"
- ③ EXIST. BIT CONC BASE CSE WID, 9"
- ④ EXIST. BITUMINOUS SHOULDERS
- ⑤ EXIST. BITUMINOUS OVERLAY
- ⑥ EXIST. SUB-BASE GRAN MATL, TY A, VAR DP, (6" MIN)
- ⑦ EXIST. HMA BINDER COURSE, (2 1/4" MIN.)
- ⑧ EXIST. AGGREGATE SHOULDERS
- ⑨ EXIST. CONCRETE GUTTER, TYPE A
- ⑩ PROP. CAPE SEAL
- ⑪ PROP. BITUMINOUS MATERIALS (FOG SEAL) (ML PAVT)
- ⑫ PROP. BITUMINOUS MATERIALS (FOG SEAL) (SHLDR)
- ⑬ PROP. MODIFIED URETHANE PAVEMENT MARKING - LINE 5"

**** NOTES:**

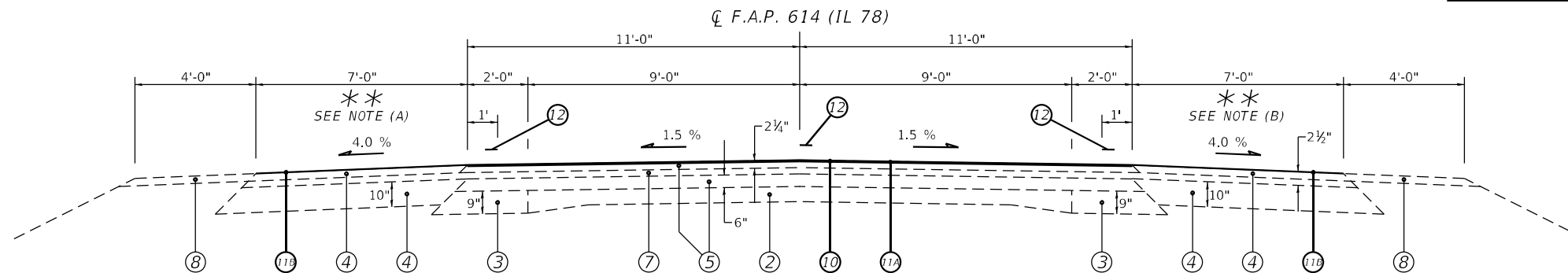
- (A) 4' WIDTH OF EXIST. HMA SHLDRS ENDS & 7' WIDTH BEGINS AT STA 988+13.00 LT.
- (B) WIDTH EXIST. HMA SHLDRS VAR. FR. 4'-0" TO 7'-0" FR. STA 988+50.00 TO 989+25.00 RT.



(4) STA. 953+00.00 TO STA. 960+29.18 (BK) [729.18"]
 (5) STA. 960+27.54 (AH) TO STA. 980+28.71 (BK) [2,001.17"]
 (6) STA. 980+30.00 (AH) TO STA. 988+06.00 [776.00"]

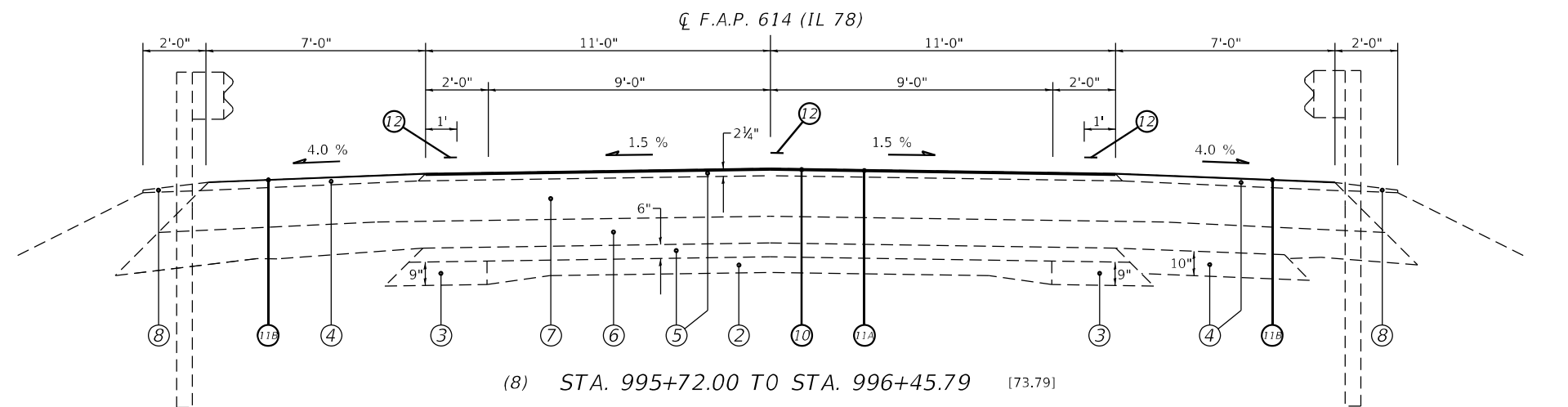
(STA EQN #1):
 STA. 960+29.18 (BK) =
 STA. 960+27.54 (AH)

(STA EQN #2):
 STA. 980+28.71 (BK) =
 STA. 980+30.00 (AH)



(7) STA. 988+06.00 TO STA. 995+72.00 [766.0"]

(BRIDGE OMISSION #1):
 SN: 009-0512 over PANTHER CRK
 STA. 996+45.79 TO 998+34.21



(8) STA. 995+72.00 TO STA. 996+45.79 [73.79"]

MODEL: Default
 FILE: Mainfile.pxl
 SUBJECT: new benchmark.com\FWIDOT\Documents\DOT Office\Director_E\Projects\0672M23\CADD\DATA\CAD\ASSETS\0672M23-shlty\skel.dgn

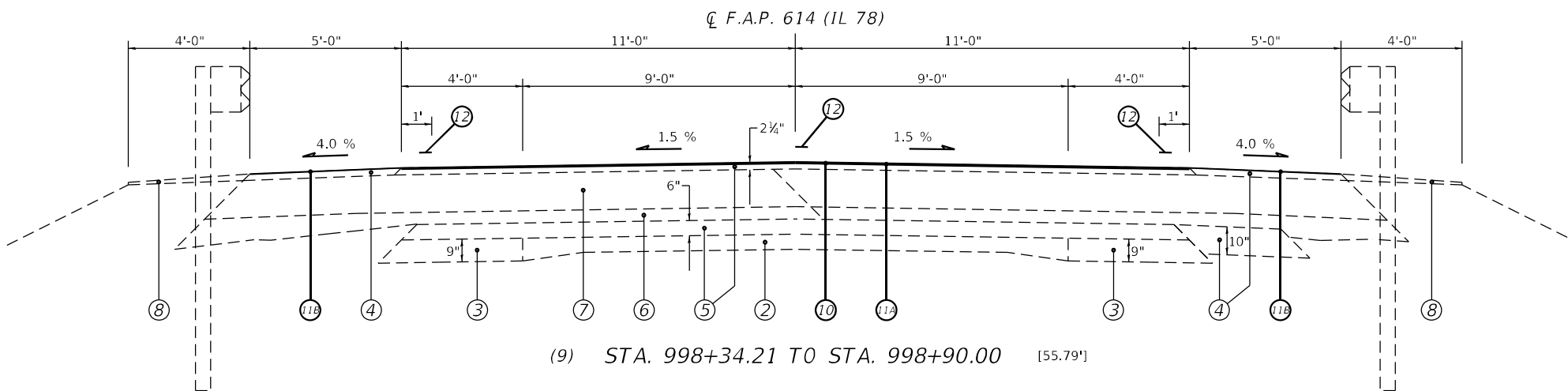
USER NAME = cabrerars	DESIGNED - RSC	REVISED -
	DRAWN - RSC	REVISED -
PLOT SCALE = 100,0000 ' / in.	CHECKED -	REVISED -
PLOT DATE = 10/29/2021	DATE -	REVISED -

**STATE OF ILLINOIS
 DEPARTMENT OF TRANSPORTATION**

TYPICAL SECTIONS

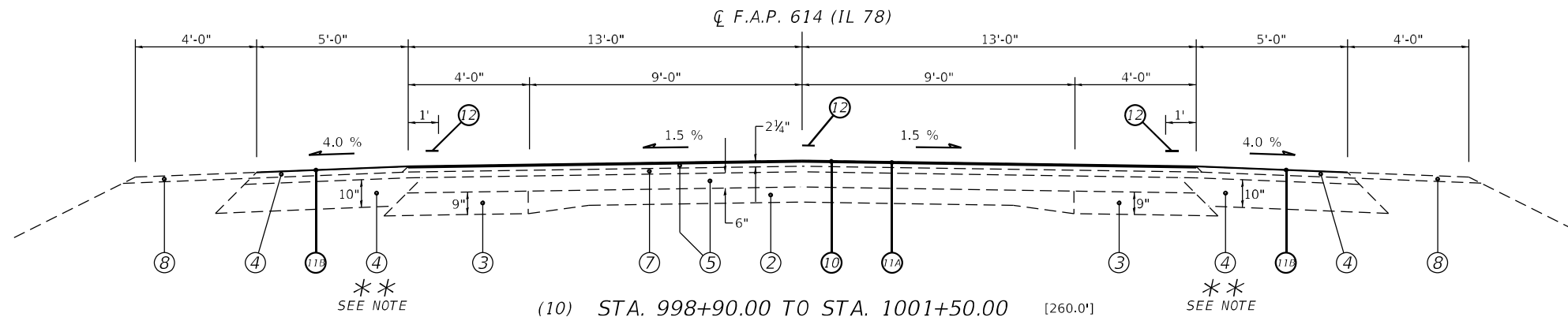
SCALE: NTS SHEET 2 OF 5 SHEETS STA. 953+00.00 TO STA. 966+45.79

F.A.P. RTE.	SECTION	COUNTY	TOTAL SHEETS	SHEET NO.
614	(144)Q, (145)Q, PP-1	CASS	26	7
CONTRACT NO. 72M23			ILLINOIS FED. AID PROJECT	



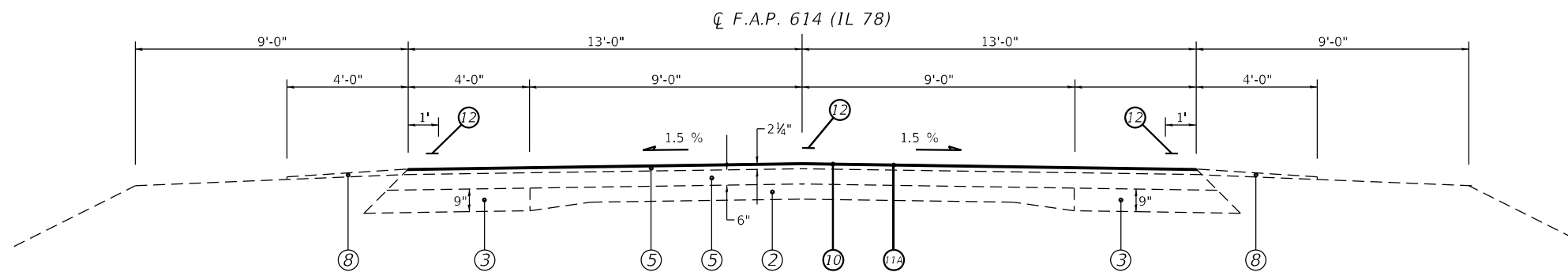
(9) STA. 998+34.21 TO STA. 998+90.00 [55.79']

(BRIDGE OMISSION #1):
SN: 009-0512 over PANTHER CRK
STA. 996+77.64 TO 998+34.21



(10) STA. 998+90.00 TO STA. 1001+50.00 [260.0']

**
SEE NOTE



(11) STA. 1001+50.00 TO STA. 1003+50.00 [200.0']

LEGEND

- ① EXIST. HMA FULL DP PAVT, 13 1/2"
- ② EXIST. P.C.C. PAVT 9"-6"-9"
- ③ EXIST. BIT CONC BASE CSE WID, 9"
- ④ EXIST. BITUMINOUS SHOULDERS
- ⑤ EXIST. BITUMINOUS OVERLAY
- ⑥ EXIST. SUB-BASE GRAN MATL, TY A, VAR DP, (6" MIN)
- ⑦ EXIST. HMA BINDER COURSE, (2 1/4" MIN.)
- ⑧ EXIST. AGGREGATE SHOULDERS
- ⑨ EXIST. CONCRETE GUTTER, TYPE A
- ⑩ PROP. CAPE SEAL
- ⑪ PROP. BITUMINOUS MATERIALS (FOG SEAL) (ML PAVT)
- ⑫ PROP. BITUMINOUS MATERIALS (FOG SEAL) (SHLDR)
- ⑬ PROP. MODIFIED URETHANE PAVEMENT MARKING - LINE 5"

** NOTE:
WIDTH OF EXIST. HMA SHLDRS VAR. FR. 5'-0" TO 1'-0"
FR. STA 1000+75.00 TO 1001+50.00.

MODEL: Default
 FILE: h:\mfc_p\p\110101\110101.dwg
 PROJECT: 110101\110101.dwg
 USER: cabrerars
 DATE: 10/29/2021

USER NAME = cabrerars	DESIGNED - RSC	REVISED -
	DRAWN - RSC	REVISED -
PLOT SCALE = 100,0000' / in.	CHECKED -	REVISED -
PLOT DATE = 10/29/2021	DATE -	REVISED -

**STATE OF ILLINOIS
DEPARTMENT OF TRANSPORTATION**

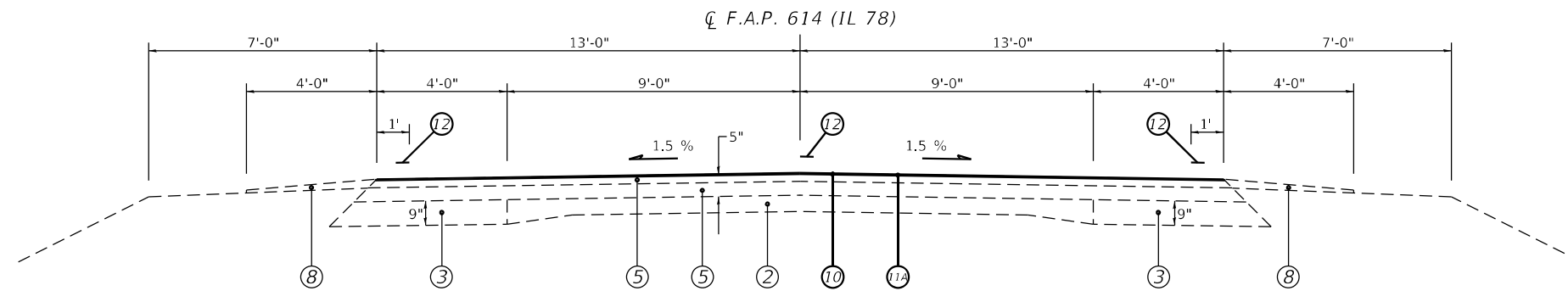
TYPICAL SECTIONS

SCALE: NTS SHEET 3 OF 5 SHEETS STA. 998+34.21 TO STA. 1003+50.00

F.A.P. RTE.	SECTION	COUNTY	TOTAL SHEETS	SHEET NO.
614	(144)Q, (145)Q, PP-1	CASS	26	8
CONTRACT NO. 72M23				
ILLINOIS FED. AID PROJECT				

LEGEND

- ① EXIST. HMA FULL DP PAVT, 13 1/2"
- ② EXIST. P.C.C. PAVT 9"-6"-9"
- ③ EXIST. BIT CONC BASE CSE WID, 9"
- ④ EXIST. BITUMINOUS SHOULDERS
- ⑤ EXIST. BITUMINOUS OVERLAY
- ⑥ EXIST. SUB-BASE GRAN MATL, TY A, VAR DP, (6" MIN)
- ⑦ EXIST. HMA BINDER COURSE, (2 1/4" MIN.)
- ⑧ EXIST. AGGREGATE SHOULDERS
- ⑨ EXIST. CONCRETE GUTTER, TYPE A
- ⑩ PROP. CAPE SEAL
- ⑪ PROP. BITUMINOUS MATERIALS (FOG SEAL) (ML PAVT)
- ⑫ PROP. BITUMINOUS MATERIALS (FOG SEAL) (SHLDR)
- ⑬ PROP. MODIFIED URETHANE PAVEMENT MARKING - LINE 5"



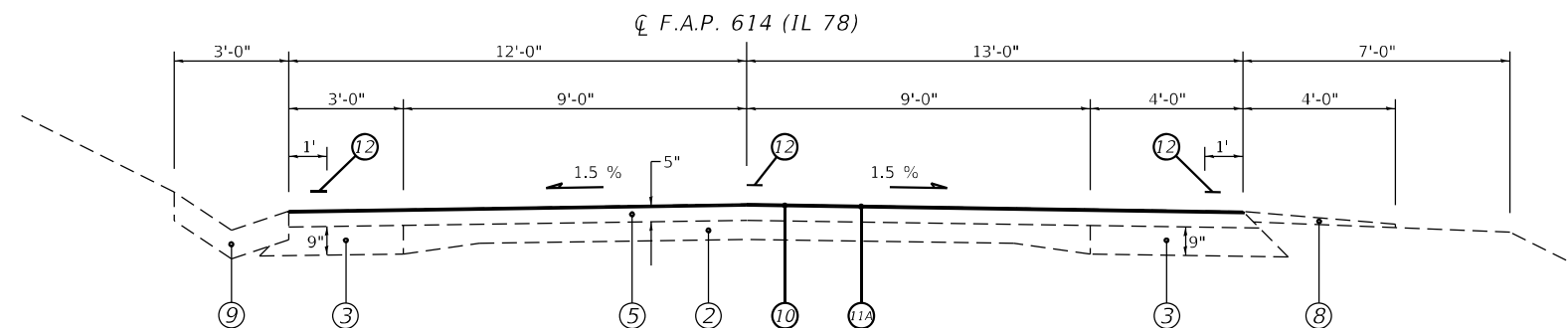
- | | |
|--|---|
| (12) STA. 1003+50.00 TO STA. 1039+14.56 (BK) [3,564.56'] | (27) STA. 177+42.00 TO STA. 187+34.74 (BK) [992.74'] |
| (13) STA. 17+05.91 (AH) TO STA. 25+50.00 [844.09'] | (28) STA. 181+09.77 (AH) TO STA. 206+38.90 (BK) [2,529.13'] |
| (16) STA. 51+00.00 TO STA. 61+38.00 [1,038.0'] | (29) STA. 206+10.30 (AH) TO STA. 283+51.30 [7,741.0'] |
| (18) STA. 79+57.00 TO STA. 110+28.00 [3,071.0'] | (31) STA. 290+67.00 TO STA. 301+47.00 [1,080.0'] |
| (23) STA. 131+53.00 TO STA. 136+93.20 [540.20'] | (33) STA. 306+82.00 TO STA. 310+98.00 [416.0'] |
| (24) STA. 138+51.20 TO STA. 155+44.00 [1,692.80'] | (37) STA. 317+40.00 TO STA. 365+00.00 [4,760.0'] |

(BRIDGE OMISSION #2):
SN: 009-0013 over LITTLE JOBS CRK
STA. 136+93.20 TO 138+51.20

(STA EQN #3):
STA. 1039+14.56 (BK) =
STA. 17+05.91 (AH)

(STA EQN #4):
STA. 187+34.74 (BK) =
STA. 181+09.77 (AH)

(STA EQN #5):
STA. 206+38.90 (BK) =
STA. 206+10.30 (AH)



- | | |
|--|--|
| (14) STA. 25+50.00 TO STA. 35+95.00 [1,045.0'] | (32) STA. 301+47.00 TO STA. 306+82.00 [535.0'] |
| (21) STA. 116+10.00 TO STA. 122+50.00 [640.0'] | (36) STA. 317+07.00 TO STA. 317+40.00 [33.0'] |
| (25) STA. 155+44.00 TO STA. 156+20.00 [76.0'] | |

MODEL: Default
FILE: \\naufc-pw\builds-cw\bea\paw.com\PIV\DOT\Documents\DOT_Offices\Dir\dr. E\Project\0672M23\CADD\DATA\CAD\papers\0672M23-sh1-by-sca1.dgn

USER NAME = cabrerars	DESIGNED - RSC	REVISED -
	DRAWN - RSC	REVISED -
PLOT SCALE = 100,0000' / in.	CHECKED -	REVISED -
PLOT DATE = 10/29/2021	DATE -	REVISED -

**STATE OF ILLINOIS
DEPARTMENT OF TRANSPORTATION**

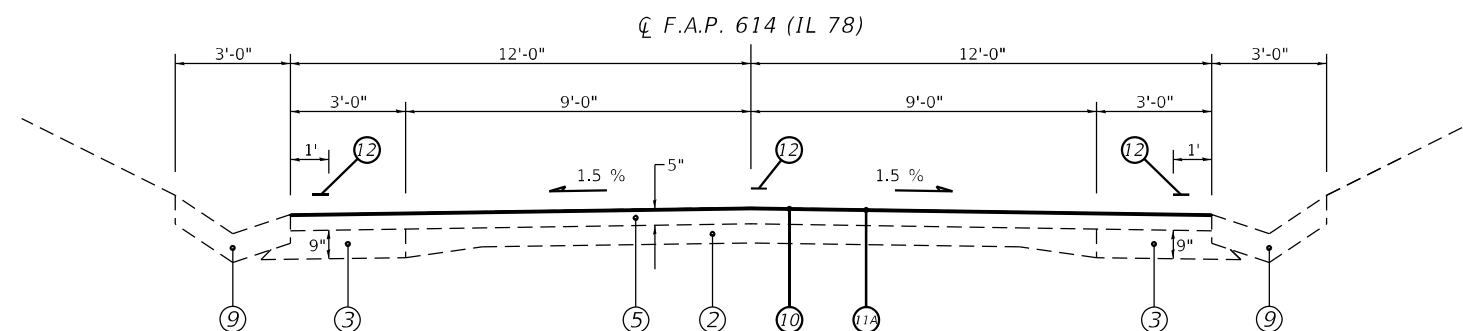
TYPICAL SECTIONS

SCALE: NTS SHEET 4 OF 5 SHEETS STA. 1003+50,00 TO STA. 365+00,00

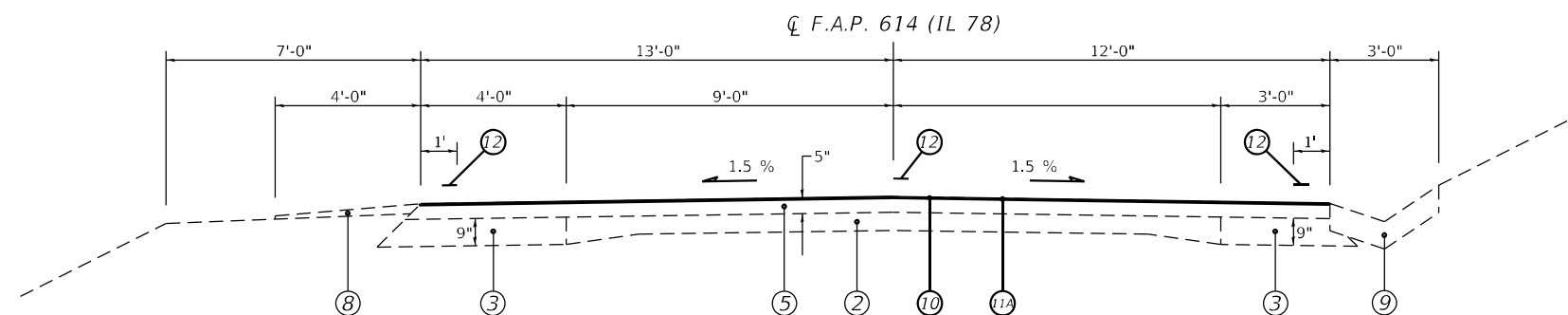
F.A.P. RTE.	SECTION	COUNTY	TOTAL SHEETS	SHEET NO.
614	(144)Q, (145)Q, PP-1	CASS	26	9
CONTRACT NO. 72M23				
ILLINOIS FED. AID PROJECT				

LEGEND

- ① EXIST. HMA FULL DP PAVT, 13 1/2"
- ② EXIST. P.C.C. PAVT 9'-6"-9"
- ③ EXIST. BIT CONC BASE CSE WID, 9"
- ④ EXIST. BITUMINOUS SHOULDERS
- ⑤ EXIST. BITUMINOUS OVERLAY
- ⑥ EXIST. SUB-BASE GRAN MATL, TY A, VAR DP, (6" MIN)
- ⑦ EXIST. HMA BINDER COURSE, (2 1/4" MIN.)
- ⑧ EXIST. AGGREGATE SHOULDERS
- ⑨ EXIST. CONCRETE GUTTER, TYPE A
- ⑩ PROP. CAPE SEAL
- ⑪ PROP. BITUMINOUS MATERIALS (FOG SEAL) (ML PAVT)
- ⑫ PROP. BITUMINOUS MATERIALS (FOG SEAL) (SHLDR)
- ⑬ PROP. MODIFIED URETHANE PAVEMENT MARKING - LINE 5"



- (15) STA. 35+95.00 TO STA. 51+00.00 [1,505.0']
- (17) STA. 61+38.00 TO STA. 79+57.00 [1,819.0']
- (20) STA. 111+24.00 TO STA. 116+10.00 [486.0']
- (22) STA. 122+50.00 TO STA. 131+53.00 [903.0']
- (26) STA. 156+20.00 TO STA. 177+42.00 [2,122.0']
- (30) STA. 283+51.30 TO STA. 290+67.00 [715.70']
- (35) STA. 312+46.00 TO STA. 317+07.00 [461.0']



- (19) STA. 110+28.00 TO STA. 111+24.00 [96.0']
- (34) STA. 310+98.00 TO STA. 312+46.00 [148.0']

MODEL: Default
 FILE: \\na11f01-pub\ultra-cw-bead\paw.com\PIV\DOT\Documents\DOT_Offices\Dir\dr. E\Project\0672M23\CAD\Drawings\CAD\Drawings\0672M23-shl-dr-by-sca1.dwg

USER NAME = cabrerars	DESIGNED - RSC	REVISED -
	DRAWN - RSC	REVISED -
PLOT SCALE = 100,0000' / in.	CHECKED -	REVISED -
PLOT DATE = 10/29/2021	DATE -	REVISED -

**STATE OF ILLINOIS
DEPARTMENT OF TRANSPORTATION**

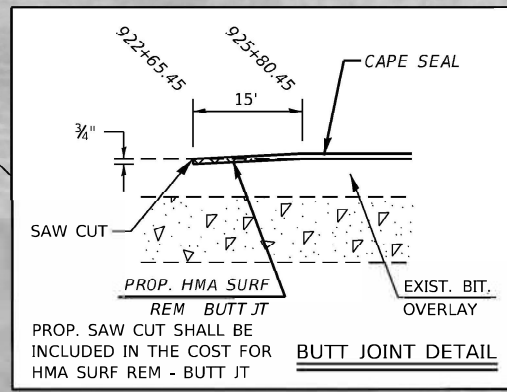
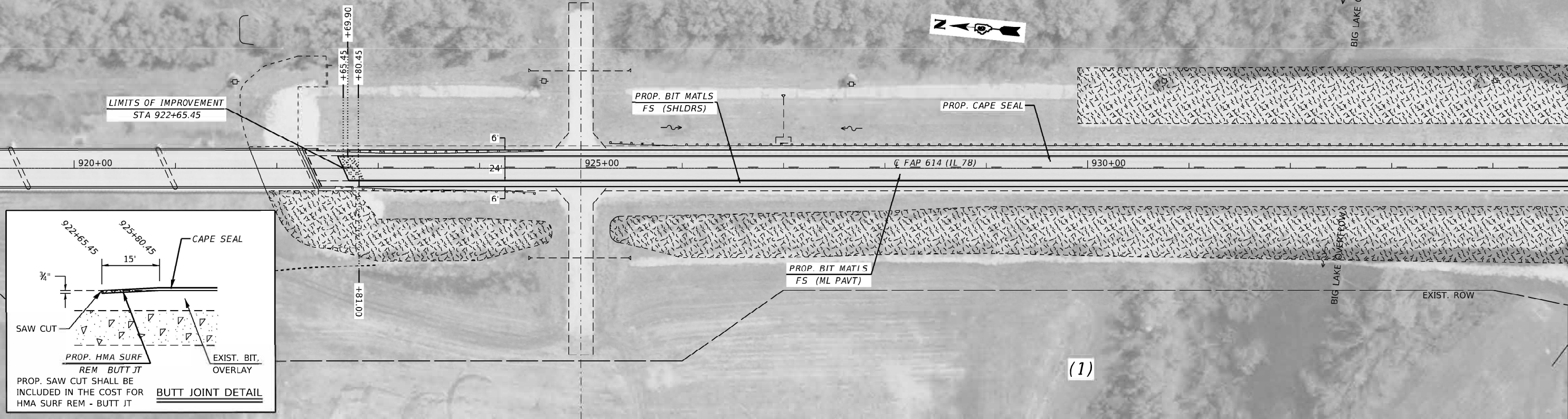
TYPICAL SECTIONS

SCALE: NTS SHEET 5 OF 5 SHEETS STA. 35+95.00 TO STA. 317+07.00

F.A.P. RTE.	SECTION	COUNTY	TOTAL SHEETS	SHEET NO.
614	(144)Q, (145)Q, PP-1	CASS	26	10
CONTRACT NO. 72M23			ILLINOIS FED. AID PROJECT	

NE 1/4, Section 31,
T 19 N, R 9 W, 3rd PM

EXIST. ROW



PROP. CURVE 34008
PI STA. = 939+29.82
I = 2° 20' 00" (LT)
D = 0° 22' 55"
R = 15,000.00'
T = 305.47'
L = 610.86'
E = 3.11'
e = N.C.
T.R. = N/A
S.E. RUN = N/A
P.C. STA. = 936+24.34
P.T. STA. = 942+35.21

USER NAME = cabrerars	DESIGNED - RSC	REVISED -
	DRAWN - RSC	REVISED -
PLOT SCALE = 100.0000' / in.	CHECKED -	REVISED -
PLOT DATE = 12/10/2021	DATE -	REVISED -

STATE OF ILLINOIS
DEPARTMENT OF TRANSPORTATION

PLAN SHEETS	
SCALE: 50	SHEET 1 OF 16 SHEETS
STA. 919+75.00 TO STA. 950+00.00	

F.A.P. RTE.	SECTION	COUNTY	TOTAL SHEETS	SHEET NO.
614	(144) Q, (145) Q, PP-1	CASS	26	11
CONTRACT NO. 72M23				
ILLINOIS FED. AID PROJECT				

MODEL: D:\draft
FILE: MARIE_Plan_Sheets\72M23\CAD\Drawings\DOT\Drawings\72M23-shl-plan.dwg

PROP. CURVE 34009
 PI STA. = 955+44.29
 I = 43° 24' 10" (RT)
 D = 4° 14' 54"
 R = 1,348.63'
 T = 536.73'
 L = 1,021.62'
 E = 102.88'
 e = 4.0%
 T.R. = _____
 S.E. RUN = _____
 P.C. STA. = 950+07.56
 P.T. STA. = 960+29.18



MODEL: Default
 FILE: \\nailes\proj\buildat-caw_bentley.com\FWIDOT\Documents\DOT Office\Shirley_E\Projects\72M23\CAD\Drawings\CAD\Drawings\0672422-shr-plan.dgn

USER NAME = cabrerars	DESIGNED - RSC	REVISED -
	DRAWN - RSC	REVISED -
PLOT SCALE = 100.0000' / in.	CHECKED -	REVISED -
PLOT DATE = 12/10/2021	DATE -	REVISED -

**STATE OF ILLINOIS
 DEPARTMENT OF TRANSPORTATION**

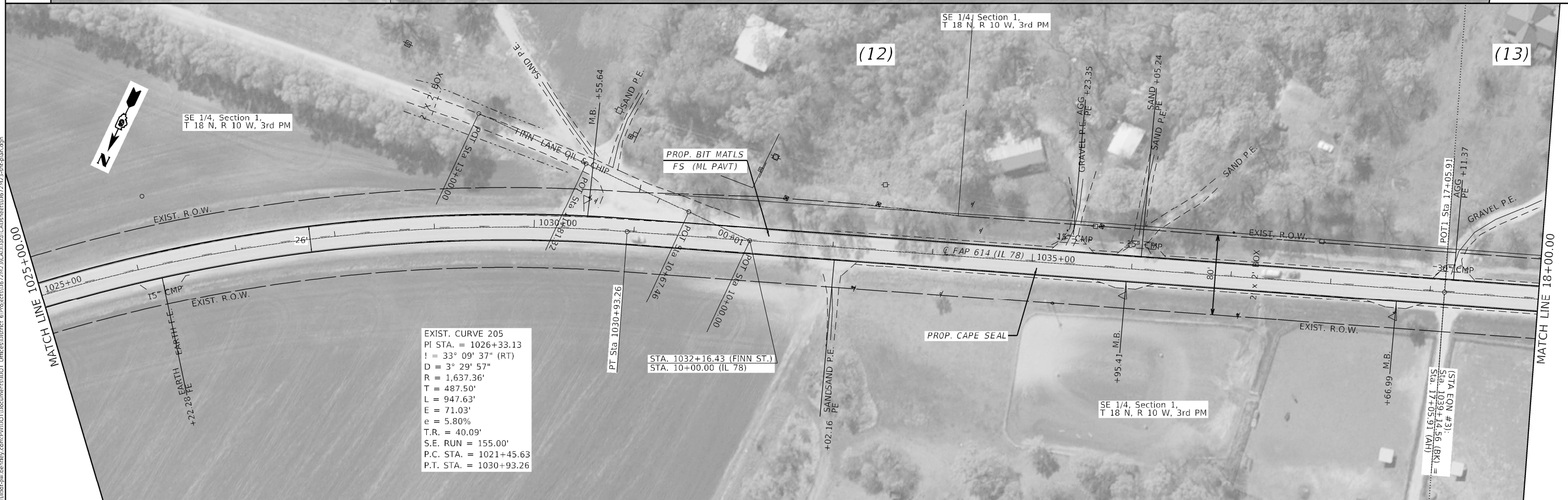
PLAN SHEETS

SCALE: 50 SHEET 2 OF 16 SHEETS STA. 950+00.00 TO STA. 980+00.00

F.A.P. RTE.	SECTION	COUNTY	TOTAL SHEETS	SHEET NO.
614	(144) Q, (145) Q, PP-1	CASS	26	12
CONTRACT NO. 72M23				
ILLINOIS FED. AID PROJECT				



EXIST. CURVE 205
 PI STA. = 1026+33.13
 ! = 33° 09' 37" (RT)
 D = 3° 29' 57"
 R = 1,637.36'
 T = 487.50'
 L = 947.63'
 E = 71.03'
 e = 5.80%
 T.R. = 40.09'
 S.E. RUN = 155.00'
 P.C. STA. = 1021+45.63
 P.T. STA. = 1030+93.26



EXIST. CURVE 205
 PI STA. = 1026+33.13
 ! = 33° 09' 37" (RT)
 D = 3° 29' 57"
 R = 1,637.36'
 T = 487.50'
 L = 947.63'
 E = 71.03'
 e = 5.80%
 T.R. = 40.09'
 S.E. RUN = 155.00'
 P.C. STA. = 1021+45.63
 P.T. STA. = 1030+93.26

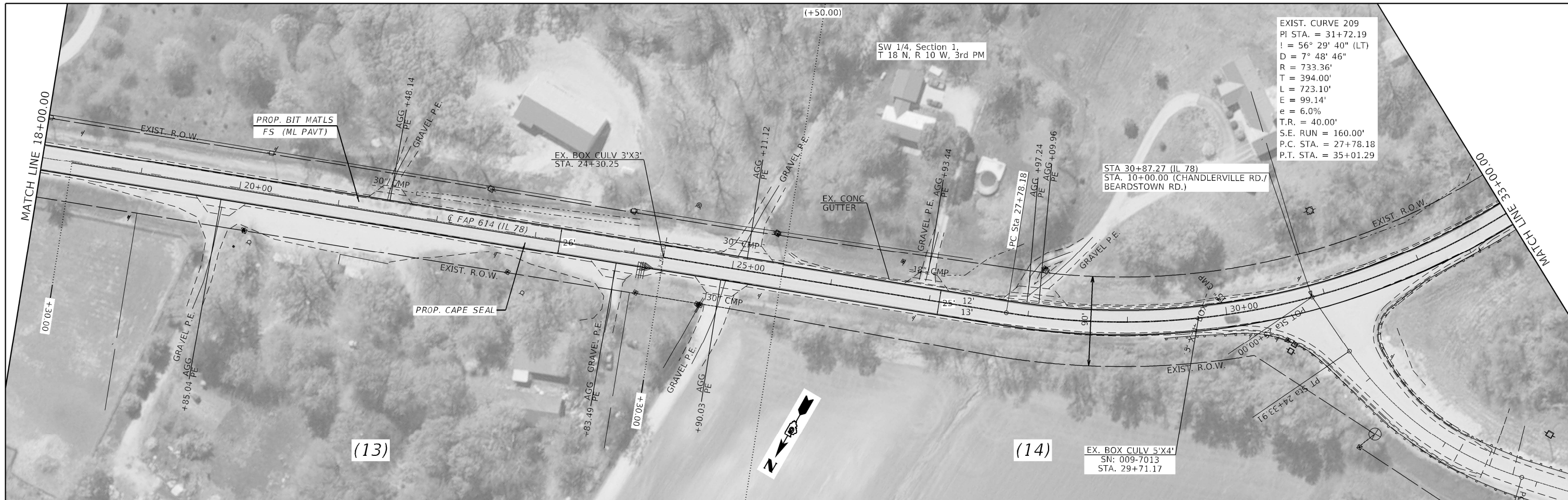
STATE OF ILLINOIS
 DEPARTMENT OF TRANSPORTATION

PLAN SHEETS

SCALE: 50 SHEET 4 OF 16 SHEETS STA. 1010+00.00 TO STA. 18+00.00

F.A.P. RTE.	SECTION	COUNTY	TOTAL SHEETS	SHEET NO.
614	(144) Q, (145) Q, PP-1	CASS	26	14
CONTRACT NO. 72M23				
ILLINOIS FED. AID PROJECT				

MODEL: Default
 FILE: Mainfile.pxl
 USER: jacob-cw-bentley.com
 PROJECT: I:\DOT\Documents\DOT Office\Drawings\Projects\72M23\CAD\Drawings\CAD\Drawings\72M23-14-14-14.dgn

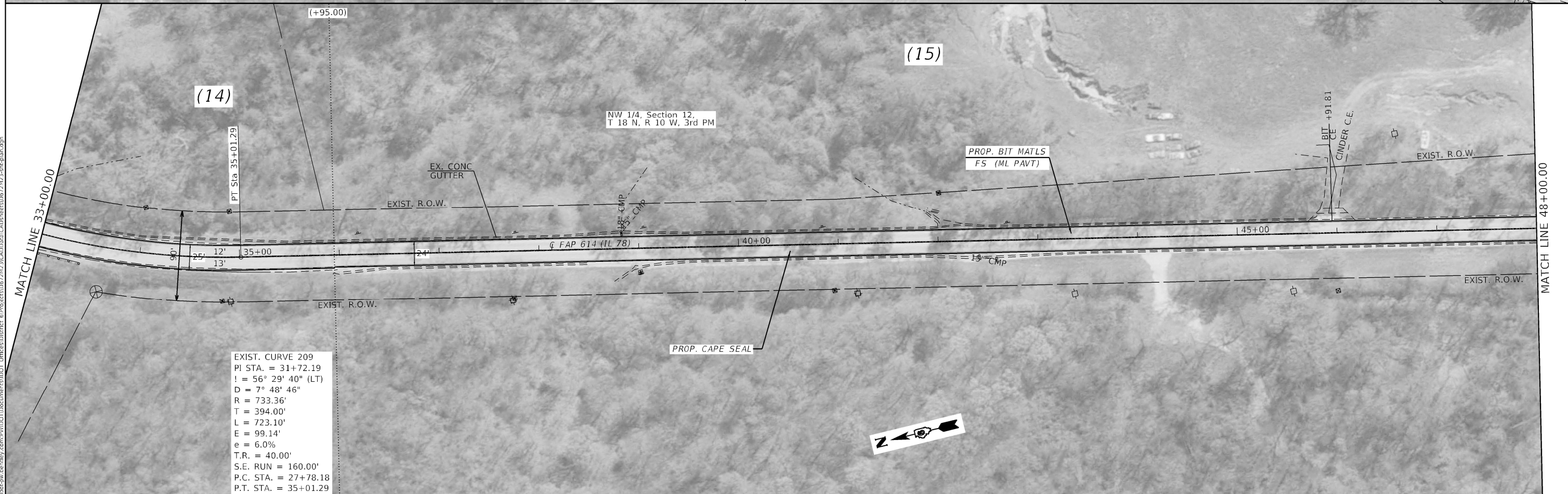


EXIST. CURVE 209
 PI STA. = 31+72.19
 ! = 56° 29' 40" (LT)
 D = 7° 48' 46"
 R = 733.36'
 T = 394.00'
 L = 723.10'
 E = 99.14'
 e = 6.0%
 T.R. = 40.00'
 S.E. RUN = 160.00'
 P.C. STA. = 27+78.18
 P.T. STA. = 35+01.29

SW 1/4, Section 1,
 T 18 N, R 10 W, 3rd PM

STA 30+87.27 (IL 78)
 STA. 10+00.00 (CHANDLERVILLE RD./
 BEARDSTOWN RD.)

EX. BOX CULV 5'X4'
 SN: 009-7013
 STA. 29+71.17



EXIST. CURVE 209
 PI STA. = 31+72.19
 ! = 56° 29' 40" (LT)
 D = 7° 48' 46"
 R = 733.36'
 T = 394.00'
 L = 723.10'
 E = 99.14'
 e = 6.0%
 T.R. = 40.00'
 S.E. RUN = 160.00'
 P.C. STA. = 27+78.18
 P.T. STA. = 35+01.29

NW 1/4, Section 12,
 T 18 N, R 10 W, 3rd PM

MODEL: Default
 FILE: \\MAILSrv\public\dot\aw\beckley.com\FWIDOT\Documents\DOT_Civil\es\Dir\esr\esr\Projects\DOT\72M23\CADD\Drawn\CAD\Drawn\DOT72M23-shr-plan.dgn

USER NAME = cabrerars	DESIGNED - RSC	REVISED -
PLOT SCALE = 100.0000' / in.	DRAWN - RSC	REVISED -
PLOT DATE = 12/10/2021	CHECKED -	REVISED -
	DATE -	REVISED -

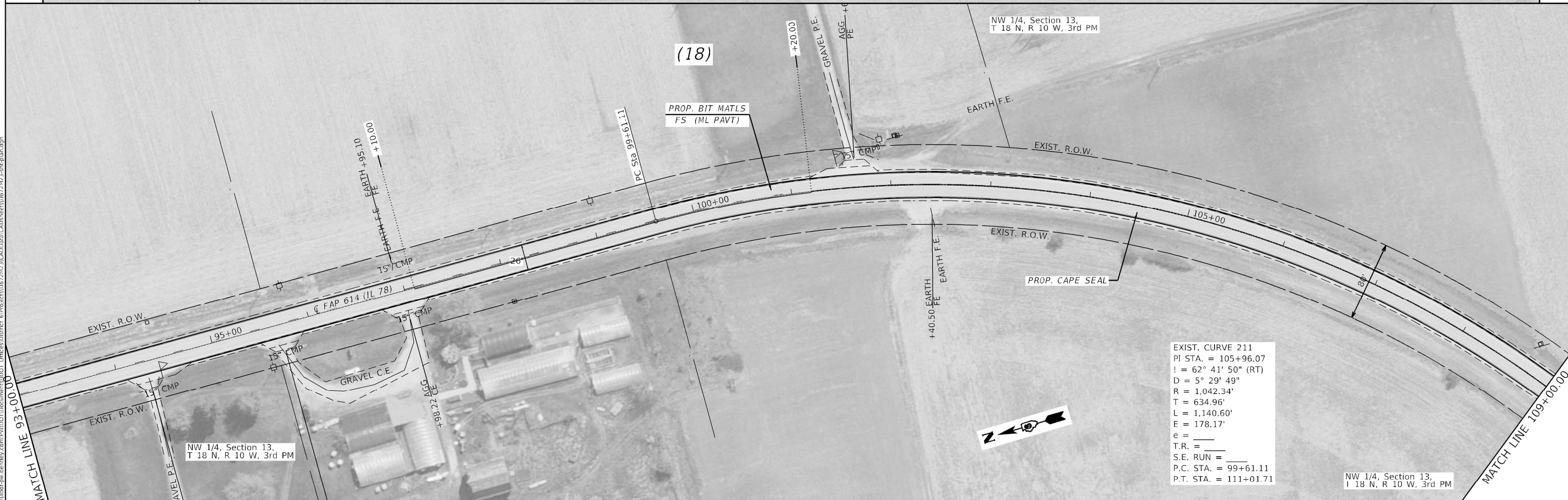
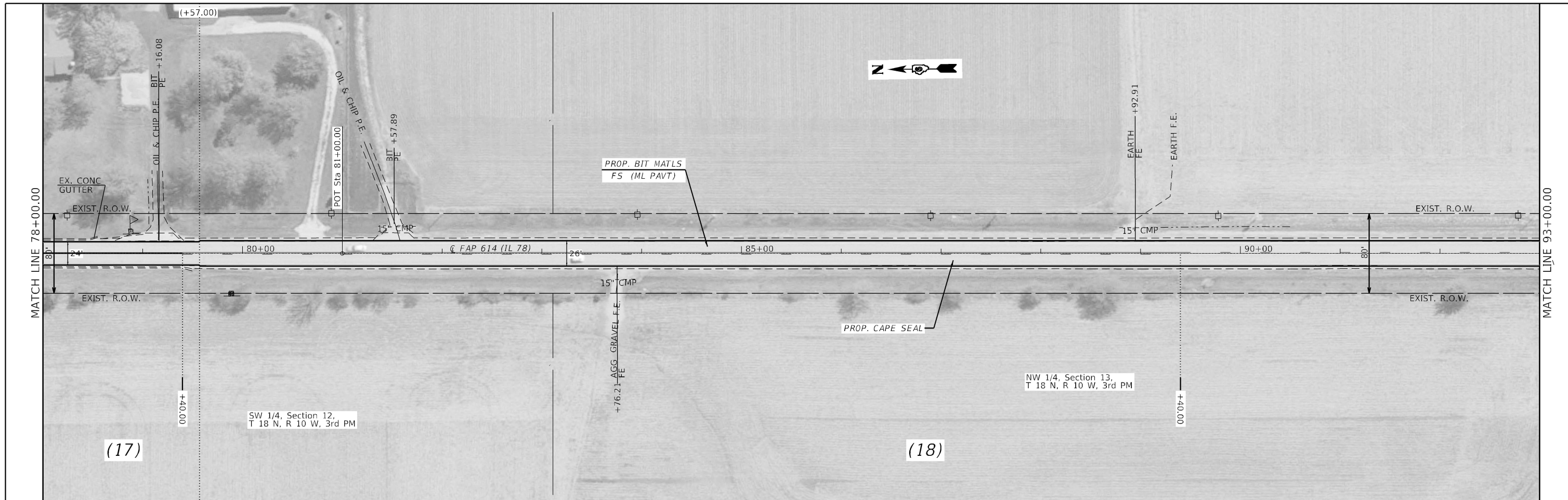
**STATE OF ILLINOIS
 DEPARTMENT OF TRANSPORTATION**

PLAN SHEETS

SCALE: 50 SHEET 5 OF 16 SHEETS STA. 18+00.00 TO STA. 48+00.00

F.A.P. RTE.	SECTION	COUNTY	TOTAL SHEETS	SHEET NO.
614	(144) Q, (145) Q, PP-1	CASS	26	15

CONTRACT NO. 72M23
 ILLINOIS FED. AID PROJECT



MODEL: Default
 FILE: Mainfile.pxd
 PLOT DATE: 12/10/2021
 PLOT SCALE: 100,0000' / in.
 CHECKED: -
 DATE: -
 DESIGNED: - RSC
 DRAWN: - RSC
 REVISED: -
 REVISED: -
 REVISED: -
 REVISED: -
 USER NAME: = cabrerars

**STATE OF ILLINOIS
DEPARTMENT OF TRANSPORTATION**

PLAN SHEETS

SCALE: 50 SHEET 7 OF 16 SHEETS STA. 78+00.00 TO STA. 109+00.00

F.A.P. RTE.	SECTION	COUNTY	TOTAL SHEETS	SHEET NO.
614	(144) Q, (145) Q, PP-1	CASS	26	17
CONTRACT NO. 72M23				
ILLINOIS FED. AID PROJECT				

EXIST. CURVE 212
 PI STA. = 124+88.85
 I = 41° 13' 22" (LT)
 D = 3° 59' 50"
 R = 1,433.41'
 T = 539.11'
 L = 1,031.30'
 E = 98.03'
 e = 6.0%
 T.R. = 40.00'
 S.E. RUN = 160.00'
 P.C. STA. = 119+49.74
 P.T. STA. = 129+81.04

SW 1/4, Section 14,
 T 18 N, R 10 W, 3rd PM

EXIST. CURVE 211
 PI STA. = 105+96.07
 I = 62° 41' 50" (RT)
 D = 5° 29' 49"
 R = 1,042.34'
 T = 634.96'
 L = 1,140.60'
 E = 178.17'
 e =
 T.R. =
 S.E. RUN =
 P.C. STA. = 99+61.11
 P.T. STA. = 111+01.71

EXIST. CURVE 212
 PI STA. = 124+88.85
 I = 41° 13' 22" (LT)
 D = 3° 59' 50"
 R = 1,433.41'
 T = 539.11'
 L = 1,031.30'
 E = 98.03'
 e = 6.0%
 T.R. = 40.00'
 S.E. RUN = 160.00'
 P.C. STA. = 119+49.74
 P.T. STA. = 129+81.04

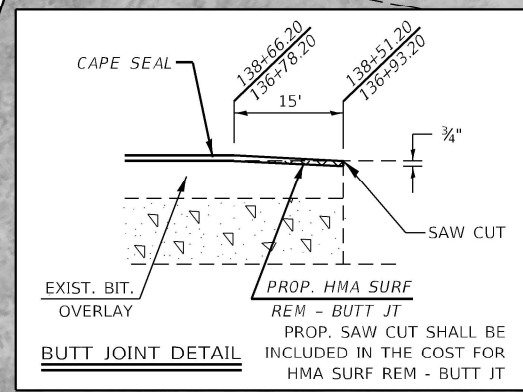
(BRIDGE OMISSION #2):
 SN: 009-0013 (over LITTLE JOBS CRK)
 Sta 136+93.20 TO 138+51.20

MATCH LINE 109+00.00

MATCH LINE 124+00.00

MATCH LINE 124+00.00

MATCH LINE 139+00.00



PROP. SAW CUT SHALL BE INCLUDED IN THE COST FOR HMA SURF REM - BUTT JT

USER NAME = cabrerans
 DESIGNED - RSC
 DRAWN - RSC
 CHECKED -
 DATE -
 REVISED -
 REVISED -
 REVISED -
 REVISED -

STATE OF ILLINOIS
 DEPARTMENT OF TRANSPORTATION

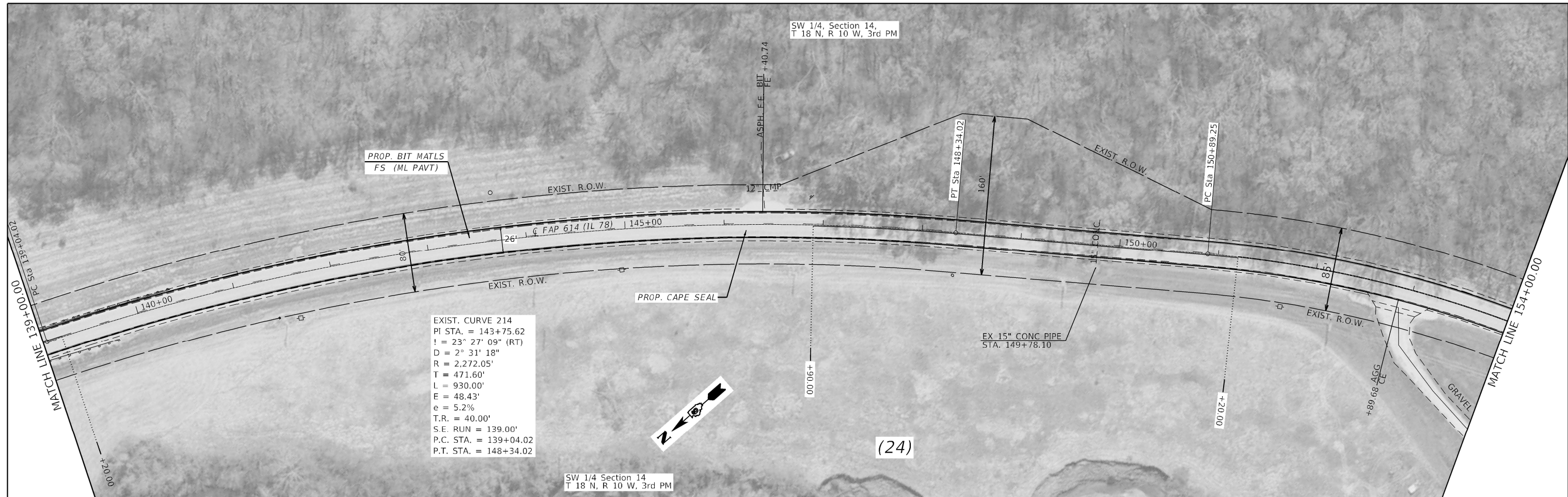
PLAN SHEETS

SCALE: 50 SHEET 8 OF 16 SHEETS STA. 109+00.00 TO STA. 139+00.00

F.A.P. RTE.	SECTION	COUNTY	TOTAL SHEETS	SHEET NO.
614	(144) Q, (145) Q, PP-1	CASS	26	18
CONTRACT NO. 72M23				
ILLINOIS FED. AID PROJECT				

MODEL: Default
 FILE: 72m23.dwg
 PROJECT: 72M23

SW 1/4, Section 14,
T 18 N, R 10 W, 3rd PM



EXIST. CURVE 214
PI STA. = 143+75.62
I = 23° 27' 09" (RT)
D = 2° 31' 18"
R = 2,272.05'
T = 471.60'
L = 930.00'
E = 48.43'
e = 5.2%
T.R. = 40.00'
S.E. RUN = 139.00'
P.C. STA. = 139+04.02
P.T. STA. = 148+34.02

SW 1/4 Section 14,
T 18 N, R 10 W, 3rd PM



EXIST. CURVE 216
PI STA. = 155+44.60
I = 43° 07' 06" (RT)
D = 4° 58' 18"
R = 1,152.47'
T = 455.35'
L = 867.30'
E = 86.69'
e = 6.0%
T.R. = 40.00'
S.E. RUN = 160.00'
P.C. STA. = 150+89.25
P.T. STA. = 159+56.55

SW 1/4, Section 14,
T 18 N, R 10 W, 3rd PM

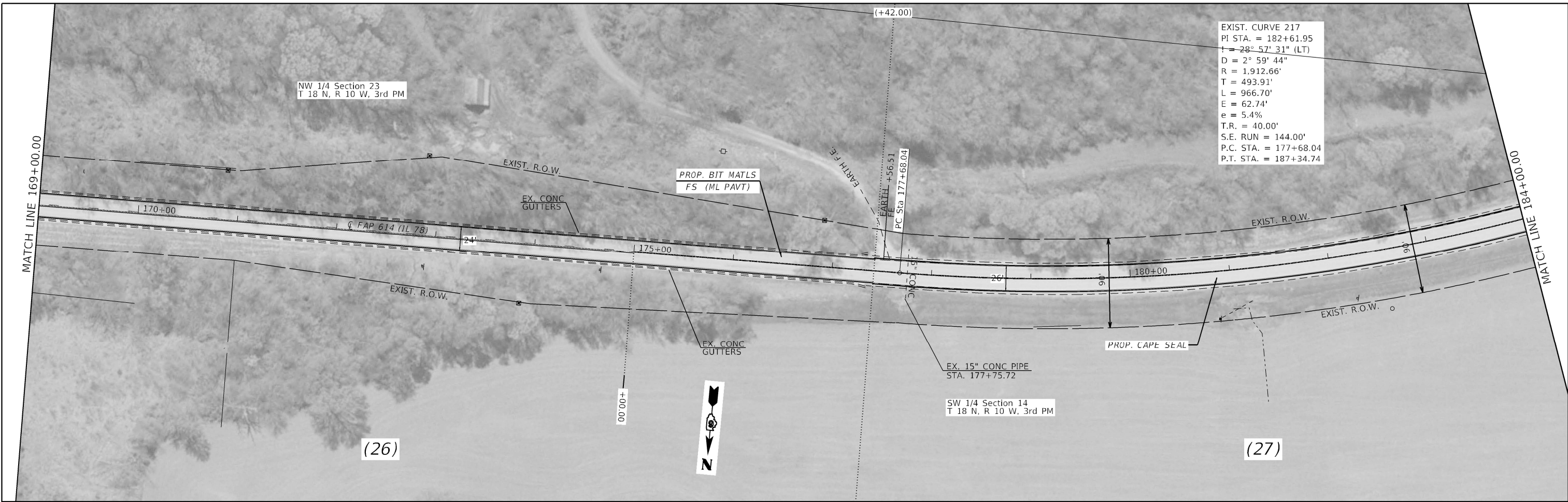
MODEL: Default
 FILE: Mainfile.pxd
 USER: cabrerars
 PROJECT: 10672423\CAD\Drawings\CAD\Drawings\10672423-shr-plan.dgn
 PLOT DATE: 12/10/2021

USER NAME = cabrerars	DESIGNED - RSC	REVISED -
	DRAWN - RSC	REVISED -
PLOT SCALE = 100.0000' / in.	CHECKED -	REVISED -
PLOT DATE = 12/10/2021	DATE -	REVISED -

**STATE OF ILLINOIS
DEPARTMENT OF TRANSPORTATION**

PLAN SHEETS			
SCALE: 50	SHEET 9 OF 16 SHEETS	STA. 139+00.00 TO STA. 169+00.00	

F.A.P. RTE.	SECTION	COUNTY	TOTAL SHEETS	SHEET NO.
614	(144) Q, (145) Q, PP-1	CASS	26	19
CONTRACT NO. 72M23				
ILLINOIS FED. AID PROJECT				



EXIST. CURVE 217
 PI STA. = 182+61.95
 I = 28° 57' 31" (LT)
 D = 2° 59' 44"
 R = 1,912.66'
 T = 493.91'
 L = 966.70'
 E = 62.74'
 e = 5.4%
 T.R. = 40.00'
 S.E. RUN = 144.00'
 P.C. STA. = 177+68.04
 P.T. STA. = 187+34.74



EXIST. CURVE 219
 PI STA. = 197+17.27
 I = 59° 29' 28" (LT)
 D = 3° 30' 06"
 R = 1,636.30'
 T = 935.06'
 L = 1,699.00'
 E = 248.32'
 e = 5.5%
 T.R. = 42.27'
 S.E. RUN = 155.00'
 P.C. STA. = 187+82.22
 P.T. STA. = 204+81.22

EXIST. CURVE 217
 PI STA. = 182+61.95
 I = 28° 57' 31" (LT)
 D = 2° 59' 44"
 R = 1,912.66'
 T = 493.91'
 L = 966.70'
 E = 62.74'
 e = 5.4%
 T.R. = 40.00'
 S.E. RUN = 144.00'
 P.C. STA. = 177+68.04
 P.T. STA. = 187+34.74

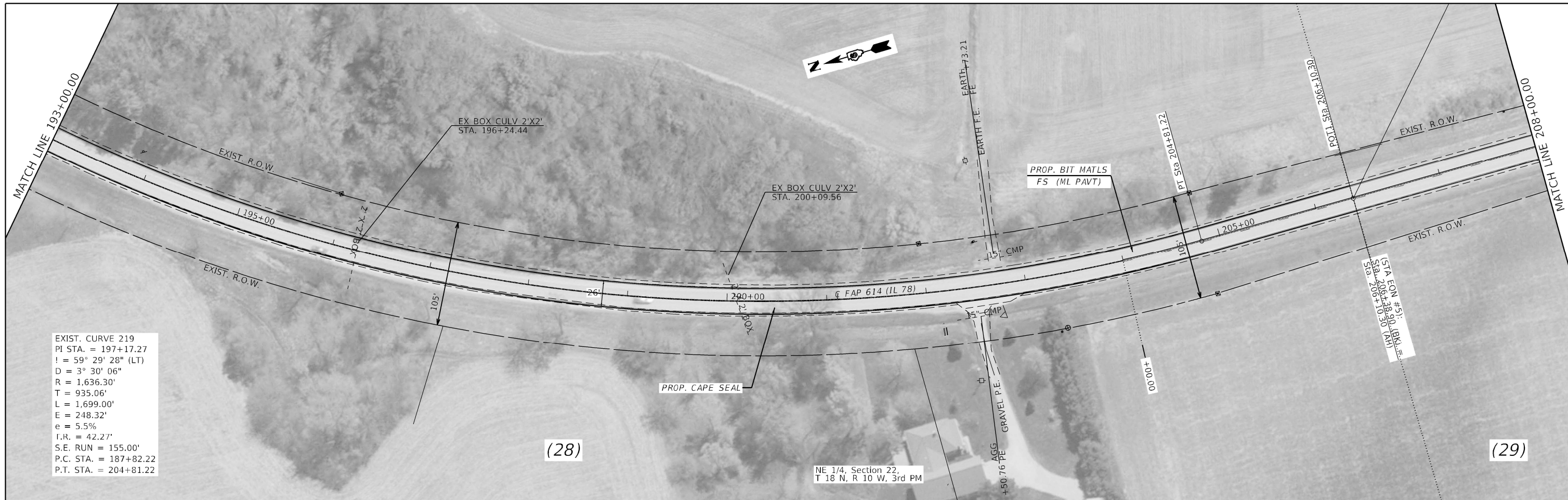
MODEL: Default
 FILE: \\mailes.pw.bentley.com\FWIDOT\Documents\DOT_Offices\Dir\rt. E:\Projects\0672423\0672423-01\plan.dgn

USER NAME = cabrerars	DESIGNED - RSC	REVISED -
DRAWN - RSC	REVISED -	
PLOT SCALE = 100.0000' / in.	CHECKED -	REVISED -
PLOT DATE = 12/10/2021	DATE -	REVISED -

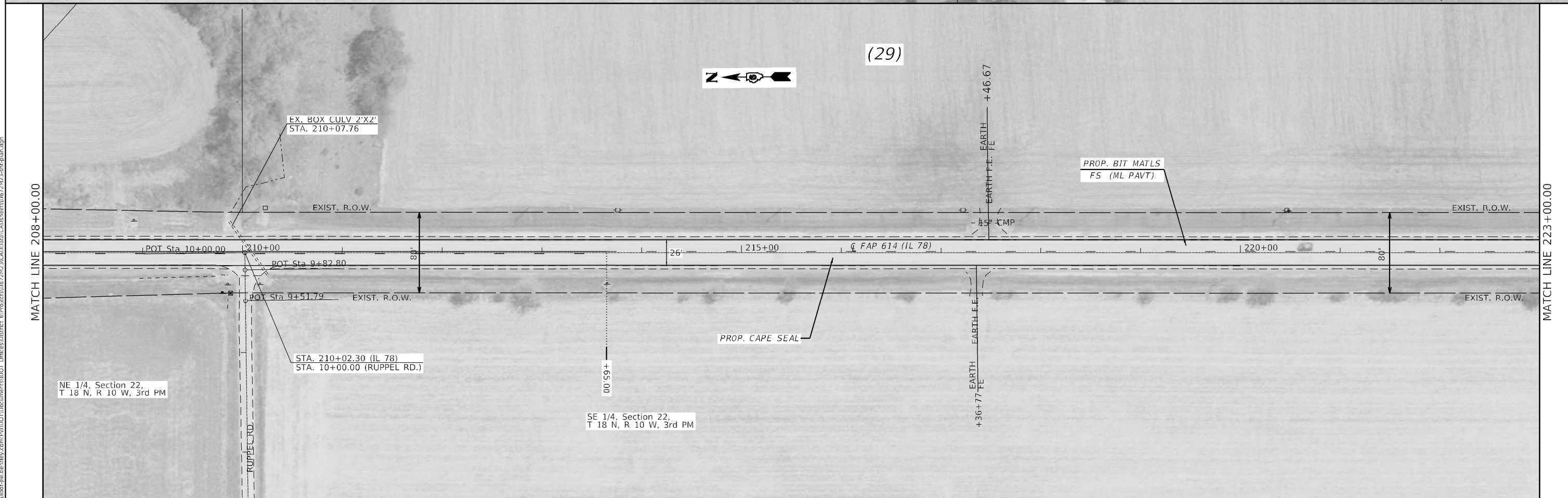
**STATE OF ILLINOIS
 DEPARTMENT OF TRANSPORTATION**

PLAN SHEETS	
SCALE: 50	SHEET 10 OF 16 SHEETS STA. 169+00.00 TO STA. 193+00.00

F.A.P. RTE.	SECTION	COUNTY	TOTAL SHEETS	SHEET NO.
614	(144) Q, (145) Q, PP-1	CASS	26	20
CONTRACT NO. 72M23				
ILLINOIS FED. AID PROJECT				



EXIST. CURVE 219
 PI STA. = 197+17.27
 I = 59° 29' 28" (LT)
 D = 3° 30' 06"
 R = 1,636.30'
 T = 935.06'
 L = 1,699.00'
 E = 248.32'
 e = 5.5%
 I.R. = 42.27'
 S.E. RUN = 155.00'
 P.C. STA. = 187+82.22
 P.T. STA. = 204+81.22



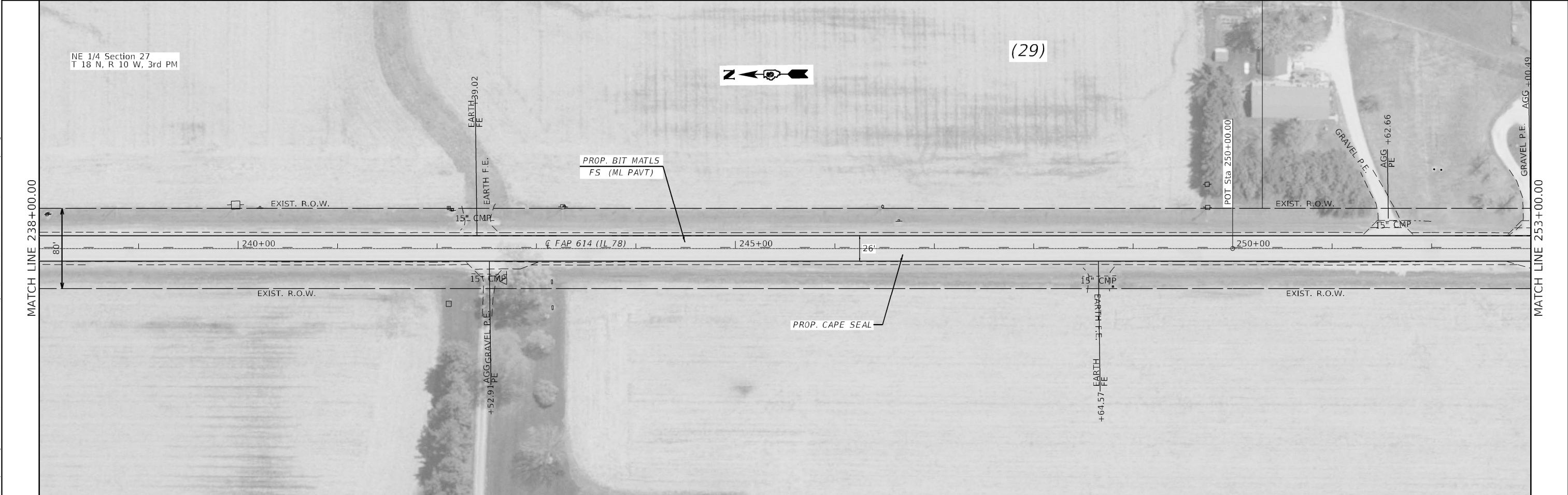
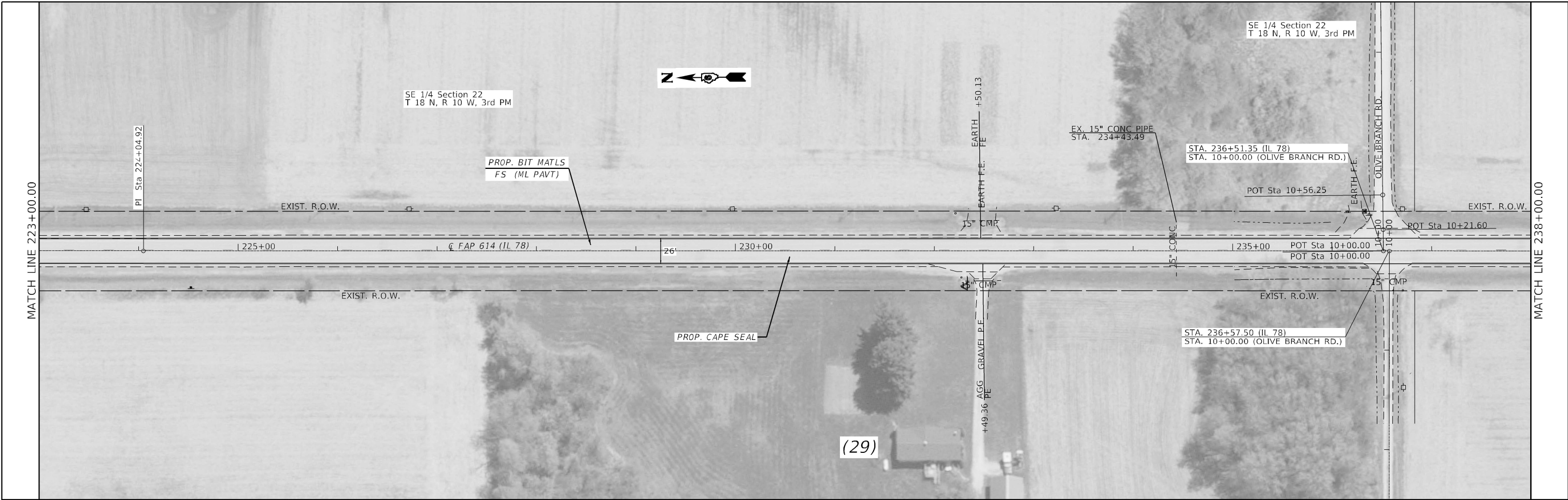
MODEL: Default
 FILE: Mainfile.plt
 PLOT DATE: 12/10/2021
 PROJECT: I:\DOT\Documents\DOT Office\Drawings\Projects\72M23\CADD\Drawings\CADD\Drawings\72M23-Subplan.dgn

USER NAME = cabrerars	DESIGNED - RSC	REVISED -
DRAWN - RSC	REVISED -	
PLOT SCALE = 100.0000' / in.	CHECKED -	REVISED -
PLOT DATE = 12/10/2021	DATE -	REVISED -

**STATE OF ILLINOIS
 DEPARTMENT OF TRANSPORTATION**

PLAN SHEETS			
SCALE: 50	SHEET 11	OF 16 SHEETS	STA. 193+00.00 TO STA. 223+00.00

F.A.P. RTE.	SECTION	COUNTY	TOTAL SHEETS	SHEET NO.
614	(144) Q, (145) Q, PP-1	CASS	26	21
CONTRACT NO. 72M23				
ILLINOIS FED. AID PROJECT				



MODEL: Default
 FILE: \\MAILSrv\planning\dot\Documents\DOT Office\Dir\dot\Project\10672423\CADD\dot\CAD\Project\10672423-sht-plan.dgn

USER NAME = cabrerars	DESIGNED - RSC	REVISED -
	DRAWN - RSC	REVISED -
PLOT SCALE = 100,0000' / in.	CHECKED -	REVISED -
PLOT DATE = 12/10/2021	DATE -	REVISED -

STATE OF ILLINOIS
DEPARTMENT OF TRANSPORTATION

PLAN SHEETS			
SCALE: 50	SHEET 12 OF 16 SHEETS	STA. 223+00.00 TO STA. 253+00.00	

F.A.P. RTE.	SECTION	COUNTY	TOTAL SHEETS	SHEET NO.
614	(144) Q, (145) Q, PP-1	CASS	26	22
CONTRACT NO. 72M23				
ILLINOIS FED. AID PROJECT				

SE 1/4 Section 27
T 18 N, R 10 W, 3rd PM

NE 1/4 Section 27
T 18 N, R 10 W, 3rd PM

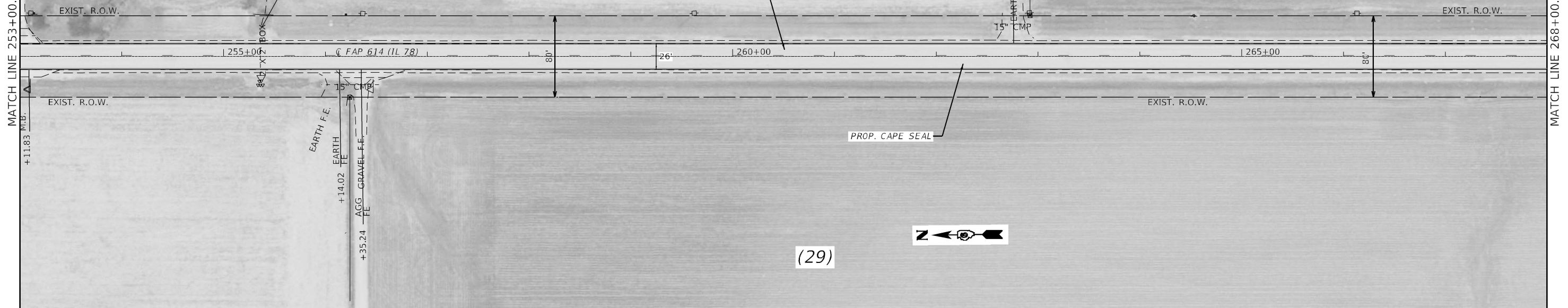
EX BOX CULV 2'X2'
STA. 255+35.98

PROP. BIT MATLS
FS (ML PAVT)

EARTH F.E. +79.00
15" CMP

MATCH LINE 253+00.00

MATCH LINE 268+00.00



(29)



SE 1/4, Section 27,
T 18 N, R 10 W, 3rd PM

PI Sta 269+77.58

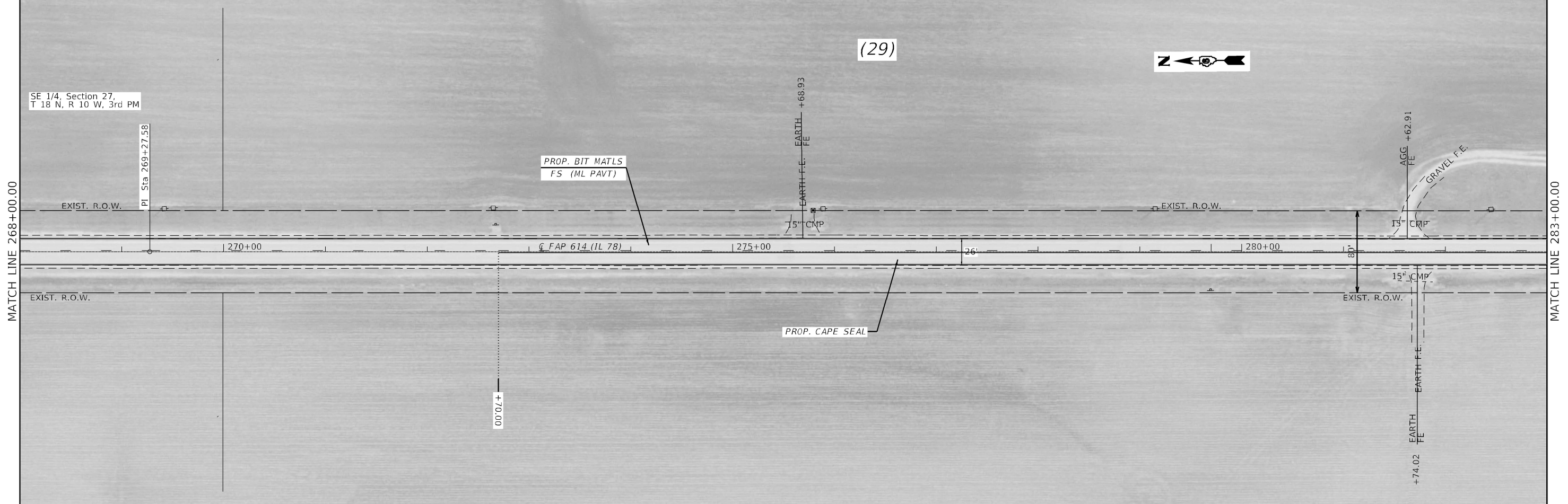
PROP. BIT MATLS
FS (ML PAVT)

EARTH F.E. +68.93
15" CMP

AGG F.E. +62.91
13" CMP
GRAVEL F.E.

MATCH LINE 268+00.00

MATCH LINE 283+00.00



(29)



MODEL: Default
FILE: Mainfile.pwd
C:\Users\cabrerars\Documents\DOT Office\Drawings\72M23\CAD\Drawings\72M23-Subplan.dgn

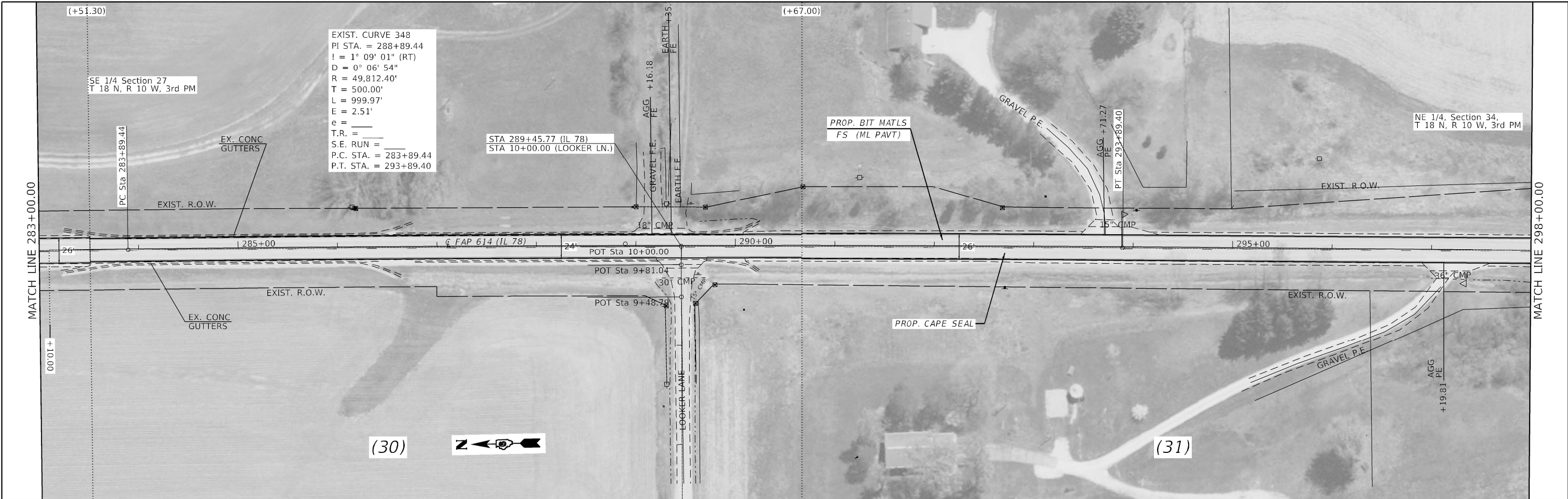
USER NAME = cabrerars	DESIGNED - RSC	REVISED -
	DRAWN - RSC	REVISED -
PLOT SCALE = 100.0000' / in.	CHECKED -	REVISED -
PLOT DATE = 12/10/2021	DATE -	REVISED -

**STATE OF ILLINOIS
DEPARTMENT OF TRANSPORTATION**

PLAN SHEETS

SCALE: 50 SHEET 13 OF 16 SHEETS STA. 253+00.00 TO STA. 283+00.00

F.A.P. RTE.	SECTION	COUNTY	TOTAL SHEETS	SHEET NO.
614	(144) Q, (145) Q, PP-1	CASS	26	23
CONTRACT NO. 72M23				
ILLINOIS FED. AID PROJECT				



MODEL: Default
 FILE: Mainfile.pia
 PLOT: cadplot-cw_bentley.com:\PLOT\DOT\Documents\DOT_Offices\Director_E\Projects\06727423\CADData\CADpapers\06727423-shtplan.dgn

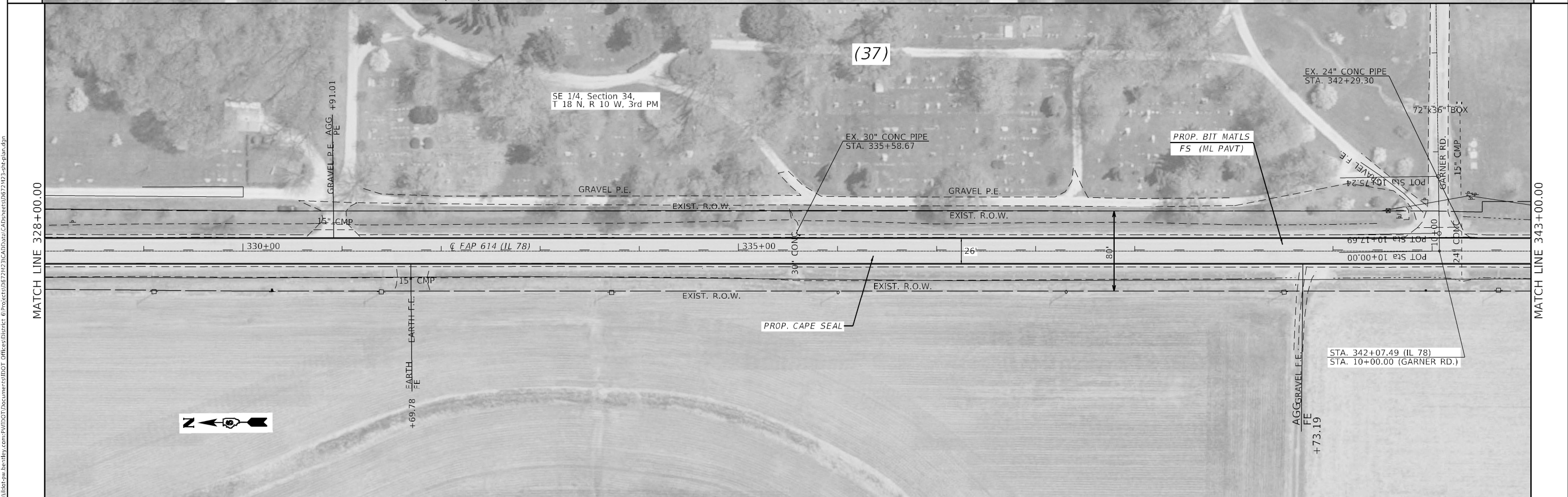
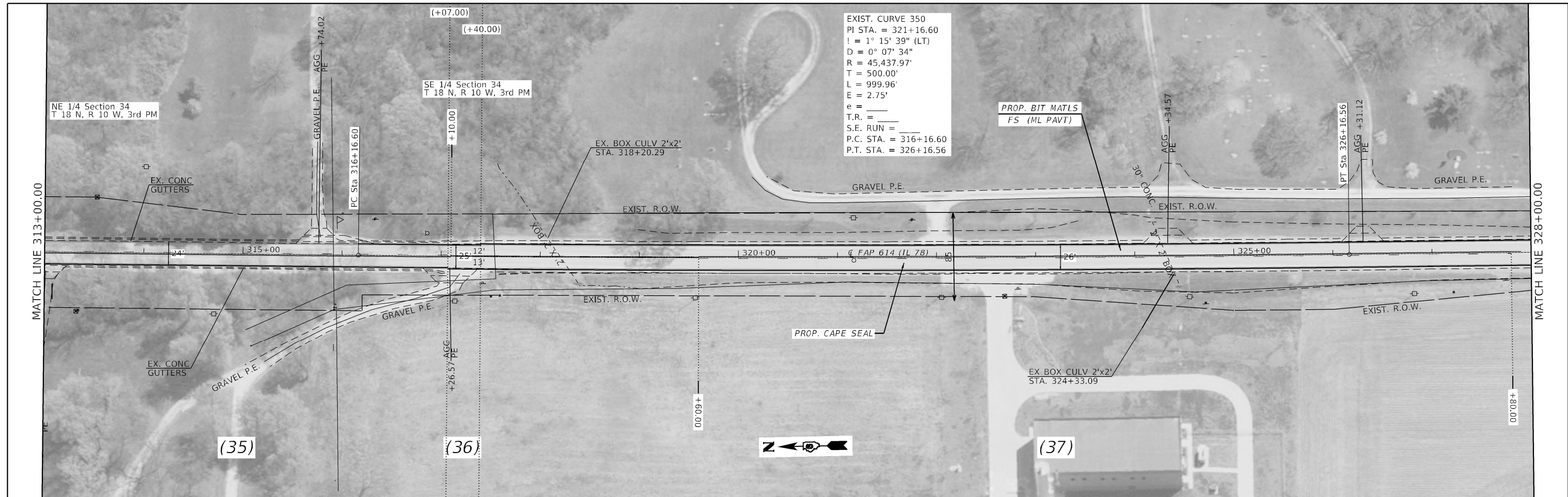
USER NAME = cabrerars	DESIGNED - RSC	REVISED -
DRAWN - RSC	REVISED -	
PLOT SCALE = 100.0000' / in.	CHECKED -	REVISED -
PLOT DATE = 12/10/2021	DATE -	REVISED -

**STATE OF ILLINOIS
 DEPARTMENT OF TRANSPORTATION**

PLAN SHEETS

SCALE: 50 SHEET 14 OF 16 SHEETS STA. 283+00.00 TO STA. 313+00.00

F.A.P. RTE.	SECTION	COUNTY	TOTAL SHEETS	SHEET NO.
614	(144) Q, (145) Q, PP-1	CASS	26	24
CONTRACT NO. 72M23				
ILLINOIS FED. AID PROJECT				



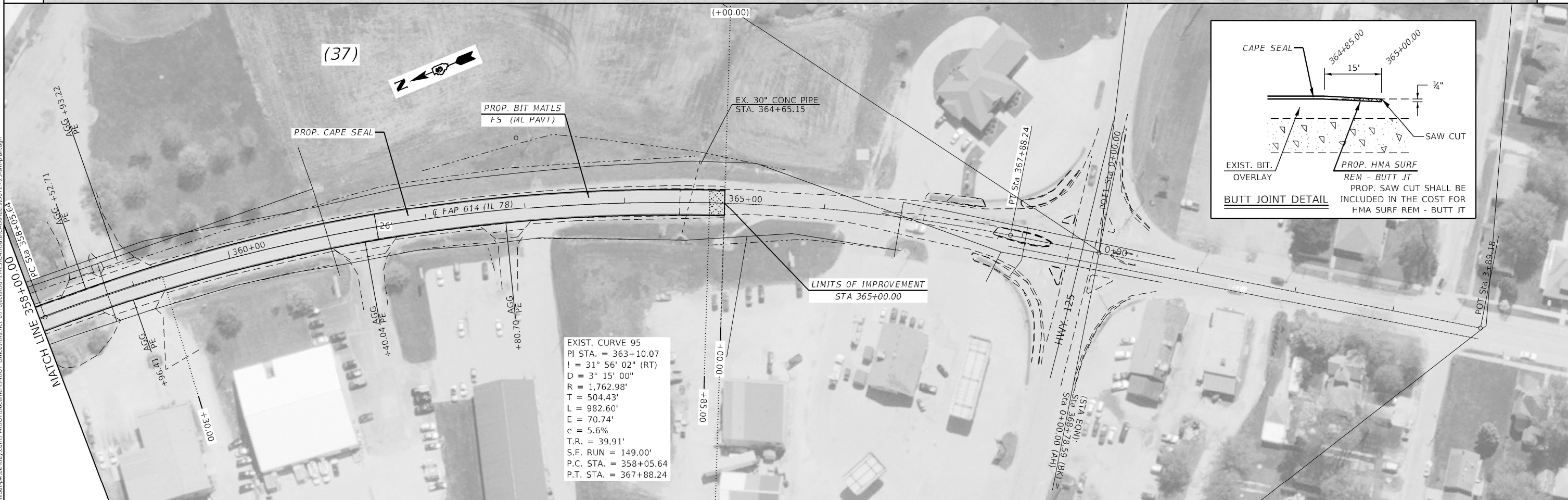
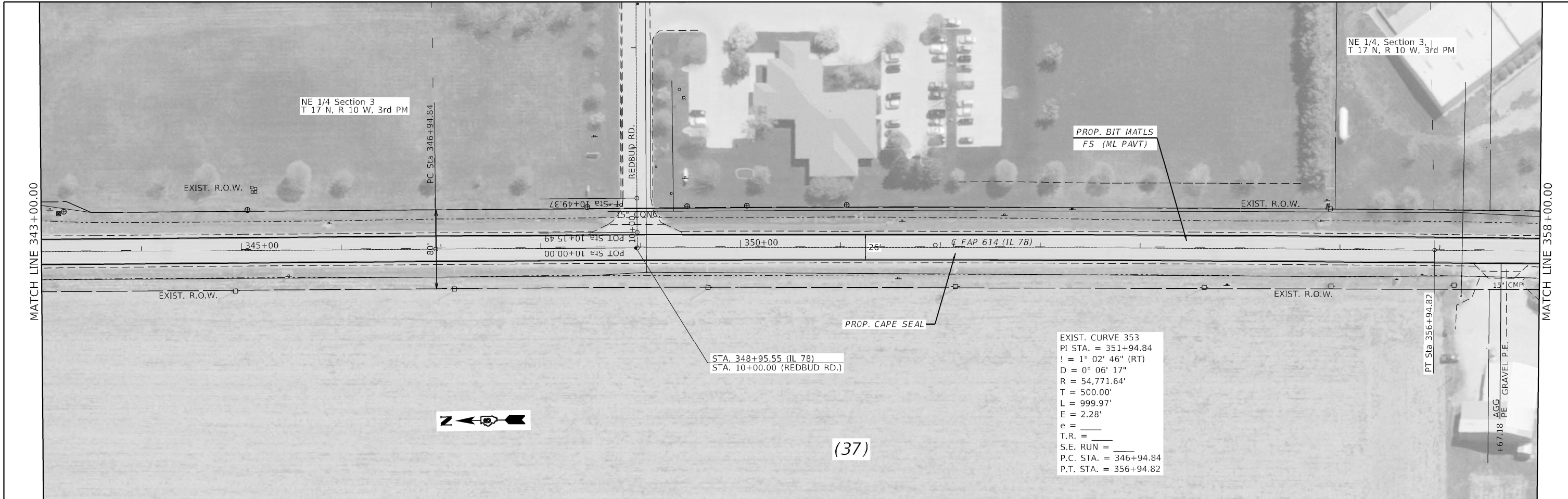
MODEL: Default
 FILE: Mainfile.pxd
 USER: cabrerars
 PROJECT: 12/10/2021
 DATE: 12/10/2021

USER NAME = cabrerars	DESIGNED - RSC	REVISED -
DRAWN - RSC	REVISED -	
PLOT SCALE = 100,0000' / in.	CHECKED -	REVISED -
PLOT DATE = 12/10/2021	DATE -	REVISED -

STATE OF ILLINOIS
DEPARTMENT OF TRANSPORTATION

PLAN SHEETS			
SCALE: 50	SHEET 15	OF 16 SHEETS	STA. 313+00.00 TO STA. 343+00.00

F.A.P. RTE.	SECTION	COUNTY	TOTAL SHEETS	SHEET NO.
614	(144) Q, (145) Q, PP-1	CASS	26	25
CONTRACT NO. 72M23				
ILLINOIS FED. AID PROJECT				



MODEL: Default
 FILE: Mainfile
 PROJECT: \\p1\dot-caw-bentley.com\PI\DOT\Documents\DOT Office\Dir\Dir: E:\Projects\10672423\CAD\DATA\CAD\Drawings\0672423-shr-plan.dgn

USER NAME = cabrerars	DESIGNED - RSC	REVISED -
	DRAWN - RSC	REVISED -
PLOT SCALE = 100.0000' / in.	CHECKED -	REVISED -
PLOT DATE = 12/10/2021	DATE -	REVISED -

**STATE OF ILLINOIS
DEPARTMENT OF TRANSPORTATION**

PLAN SHEETS

SCALE: 50 SHEET 16 OF 16 SHEETS STA. 343+00.00 TO STA. 368+00.00

F.A.P. RTE.	SECTION	COUNTY	TOTAL SHEETS	SHEET NO.
614	(144) Q, (145) Q, PP-1	CASS	26	26
CONTRACT NO. 72M23				
ILLINOIS FED. AID PROJECT				