

**SUMMARY OF QUANTITIES**

SPECIAL NOTES	SP	CODE NO.	ITEM	UNIT	TOTAL	Algonquin Road @ Haligus Road	Algonquin Road @ Lakewood Road	Algonquin Road @ Square Barn Road	Algonquin Road @ Frank Road	Algonquin Road @ Harvest Gate Road / Talaga Drive	Algonquin Road @ Hilltop Drive / Hanson Road	Algonquin Road @ Pyott Road	Algonquin Road Interconnect	Wilmot Road @ Main Street
Construction Code 0021														
****		78000650	THERMOPLASTIC PAVEMENT MARKING - LINE 24"	FOOT	149	54	41			54				
****	*	78011035	GROOVING FOR RECESSED PAVEMENT MARKING 7"	FOOT	2212	690	396	486		640				
	*	81028200	UNDERGROUND CONDUIT, GALVANIZED STEEL, 2" DIA.	FOOT	253	32	24	73		<b>100</b>				24
	*	81028220	UNDERGROUND CONDUIT, GALVANIZED STEEL, 3" DIA.	FOOT	822	143	38	149	166	145	67	58		56
	*	81028240	UNDERGROUND CONDUIT, GALVANIZED STEEL, 4" DIA.	FOOT	391	127			264					
	*	81028250	UNDERGROUND CONDUIT, GALVANIZED STEEL, 5" DIA.	FOOT	18		18							
	*	81028350	UNDERGROUND CONDUIT, PVC, 2" DIA.	FOOT	10875								10875	
	*	81028730	UNDERGROUND CONDUIT, COILABLE NONMETALLIC CONDUIT, 1 1/4" DIA.	FOOT	205	205								
	*	81028740	UNDERGROUND CONDUIT, COILABLE NONMETALLIC CONDUIT, 1 1/2" DIA.	FOOT	1015		310	170	200	335				
	*	81400100	HANDHOLE	EACH	21		1	1	2				17	
<b>***</b>		<b>81400300</b>	<b>DOUBLE HANDHOLE</b>	<b>EACH</b>	<b>1</b>				<b>1</b>					
		81702101	ELECTRIC CABLE IN CONDUIT, 600V (XLP-TYPE USE) 1/C NO. 14	FOOT	3925	615	875	670	550	1215				
		81702130	ELECTRIC CABLE IN CONDUIT, 600V (XLP-TYPE USE) 1/C NO. 6	FOOT	6390	3080	875	670	550	1215				
		81702140	ELECTRIC CABLE IN CONDUIT, 600V (XLP-TYPE USE) 1/C NO. 4	FOOT	9930		2620	2015	1650	3645				
		81800240	AERIAL CABLE, 2-1/C NO. 8 WITH MESSENGER WIRE	FOOT	3190	545	505	440		460	415	495		330
		84200500	REMOVAL OF LIGHTING UNIT, SALVAGE	EACH	2					2				
		84200804	REMOVAL OF POLE FOUNDATION	EACH	2					2				
	*	85000200	MAINTENANCE OF EXISTING TRAFFIC SIGNAL INSTALLATION	EACH	2				1				1	
	*	86400100	TRANSCEIVER - FIBER OPTIC	EACH	6								6	
	*	87300925	ELECTRIC CABLE IN CONDUIT, TRACER, NO. 14 1C	FOOT	11319								11319	
		87301215	ELECTRIC CABLE IN CONDUIT, SIGNAL NO. 14 2C	FOOT	4686	1471	468	826	<b>627</b>	1294				

\*\*\*\* SPECIALTY ITEMS

DATE	BY	DATE	BY
DATE	BY	DATE	BY

FILE NAME = 005\_SUM2-180176

USER NAME = pandrews  
 PLOT SCALE = 2'  
 PLOT DATE = 1/12/2022

DESIGNED - TFS  
 DRAWN - FPB  
 CHECKED - GMZ  
 DATE -  
 REVISED - **3/1/22**  
 REVISED -  
 REVISED -  
 REVISED -

**STATE OF ILLINOIS  
 DEPARTMENT OF TRANSPORTATION**

**SUMMARY OF QUANTITIES**

SCALE: 1" = 2' SHEET NO. OF SHEETS STA. TO STA.

F.A.P. RTE.	SECTION	COUNTY	TOTAL SHEETS	SHEET NO.
	18-00480-00-TL	MCHENRY	132	5
FED. ROAD DIST. NO.		ILLINOIS FED. AID PROJECT		
		CONTRACT NO. 61H50		

**SUMMARY OF QUANTITIES**

SPECIAL NOTES	SP	CODE NO.	ITEM	UNIT	TOTAL	Algonquin Road @ Haligus Road	Algonquin Road @ Lakewood Road	Algonquin Road @ Square Barn Road	Algonquin Road @ Frank Road	Algonquin Road @ Harvest Gate Road / Talaga Drive	Algonquin Road @ Hilltop Drive / Hanson Road	Algonquin Road @ Pyott Road	Algonquin Road Interconnect	Wilmot Road @ Main Street
Construction Code 0021														
	*	87703010	STEEL COMBINATION MAST ARM ASSEMBLY AND POLE 56 FT.	EACH	2	1	1							
	*	87703030	STEEL COMBINATION MAST ARM ASSEMBLY AND POLE 60 FT.	EACH	2				1	1				
	***	87703080	STEEL COMBINATION MAST ARM AND POLE 68 FT	EACH	1		1							
	*	87704450	STEEL COMBINATION MAST ARM ASSEMBLY AND POLE WITH DUAL MAST ARMS, 44 FT. AND 22 FT.	EACH	1							1		
	*	87800100	CONCRETE FOUNDATION, TYPE A	FOOT	120	28	8	16	16	24	20	4		4
	*	87800200	CONCRETE FOUNDATION, TYPE D	FOOT	4		4							
	*	87800415	CONCRETE FOUNDATION, TYPE E 36-INCH DIAMETER	FOOT	375	45	30	45	45	45	60	45		60
	*	87800420	CONCRETE FOUNDATION, TYPE E 42-INCH DIAMETER	FOOT	125	25	50		25	25				
		87900100	DRILL EXISTING FOUNDATION	EACH	3		1	1						1
		87900200	DRILL EXISTING HANDHOLE	EACH	51	9	8	5	4	10	4	3	4	4
	*	88030020	SIGNAL HEAD, LED, 1-FACE, 3-SECTION, MAST-ARM MOUNTED	EACH	54	6	9	6	6	6	12	5		4
	*	88030050	SIGNAL HEAD, LED, 1-FACE, 3-SECTION, BRACKET MOUNTED	EACH	38	4	4	7	4	4	6	5		4
	*	88030070	SIGNAL HEAD, LED, 1-FACE, 4-SECTION, BRACKET MOUNTED	EACH	22	4	2	1	4	4		3		4
	*	88030080	SIGNAL HEAD, LED, 1-FACE, 4-SECTION, MAST ARM MOUNTED	EACH	24	4	2	1	4	4		5		4
	*	88030100	SIGNAL HEAD, LED, 1-FACE, 5-SECTION, BRACKET MOUNTED	EACH	6	2	3				1			
	*	88030110	SIGNAL HEAD, LED, 1-FACE, 5-SECTION, MAST-ARM MOUNTED	EACH	6	2	3				1			
	*	88055150	OPTICALLY PROGRAMMED SIGNAL HEAD, LED, 1-FACE, 3-SECTION, BRACKET MOUNTED	EACH	1							1		
	*	88102717	PEDESTRIAN SIGNAL HEAD, LED, 1-FACE, BRACKET MOUNTED WITH COUNTDOWN TIMER	EACH	30	8	4	6	4	8				
		88200100	TRAFFIC SIGNAL BACKPLATE	EACH	149	22	23	14	18	18	20	18		16
	*	89000100	TEMPORARY TRAFFIC SIGNAL INSTALLATION	EACH	7	1	1	1		1	1	1		1
	*	89500120	REMOVE EXISTING SERVICE INSTALLATION	EACH	5			1		1	1	1		1

\*\* - NOMINAL QUANTITY TO BE USED AS DIRECTED BY THE ENGINEER


\*\*\* SPECIALTY ITEMS

DATE	BY	DATE	BY
DATE	BY	DATE	BY

FILE NAME = 007\_SLM4-180176

USER NAME = pandrows

DESIGNED - TFS

REVISED -  3/1/22

DRAWN - FPB

REVISED -

PLOT SCALE = 2"

CHECKED - GMZ

REVISED -

PLOT DATE = 1/12/2022

DATE -

REVISED -

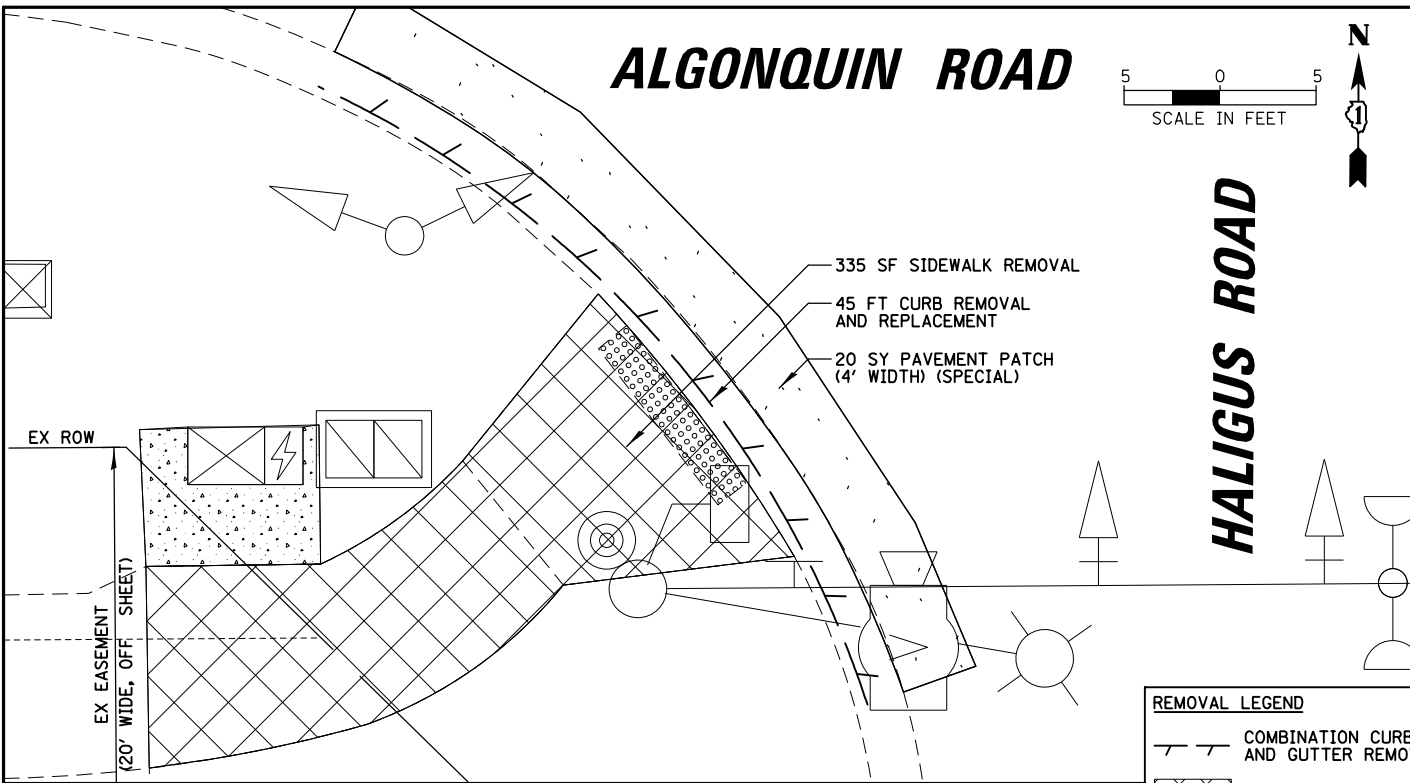
**STATE OF ILLINOIS  
DEPARTMENT OF TRANSPORTATION**

**SUMMARY OF QUANTITIES**

SCALE: 1" = 2' SHEET NO. OF SHEETS STA. TO STA.

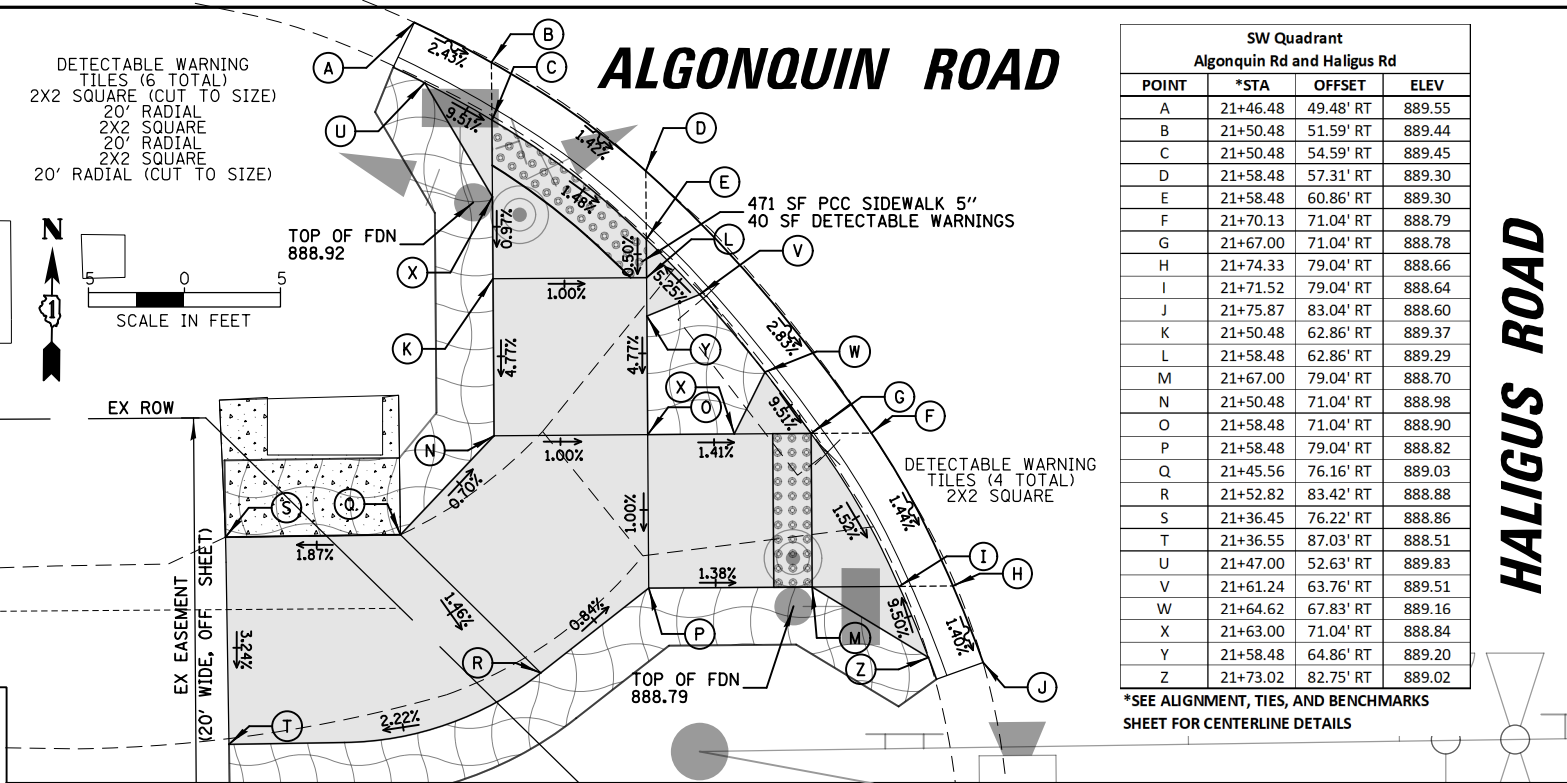
F.A.P. RTE.	SECTION	COUNTY	TOTAL SHEETS	SHEET NO.
	18-00480-00-TL	MCHENRY	132	7
FED. ROAD DIST. NO. ILLINOIS FED. AID PROJECT			CONTRACT NO. 61H50	

DATE: \_\_\_\_\_ BY: \_\_\_\_\_  
 SURVEYED: \_\_\_\_\_ ALIGNED: \_\_\_\_\_ CHECKED: \_\_\_\_\_  
 NOTE BOOK: \_\_\_\_\_ RT. OF WAY CHECKED: \_\_\_\_\_  
 NO.: \_\_\_\_\_ CAD FILE NAME: \_\_\_\_\_  
 PROFILE: \_\_\_\_\_ SURVEYED: \_\_\_\_\_ GRADES CHECKED: \_\_\_\_\_  
 NOTE BOOK: \_\_\_\_\_ E.M. NOTED: \_\_\_\_\_  
 NO.: \_\_\_\_\_ STRUCTURE NOTATIONS: \_\_\_\_\_



**REMOVAL LEGEND**

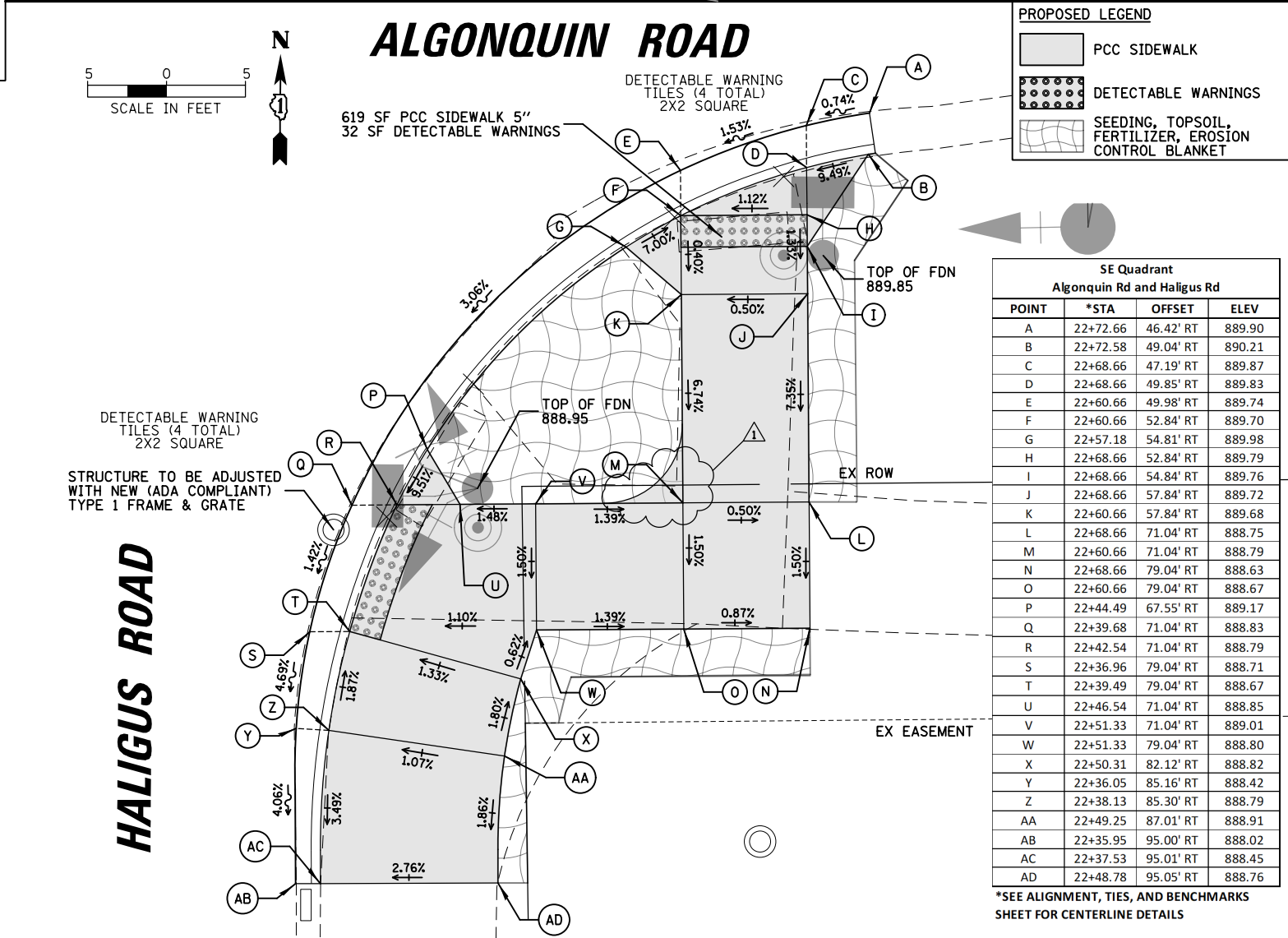
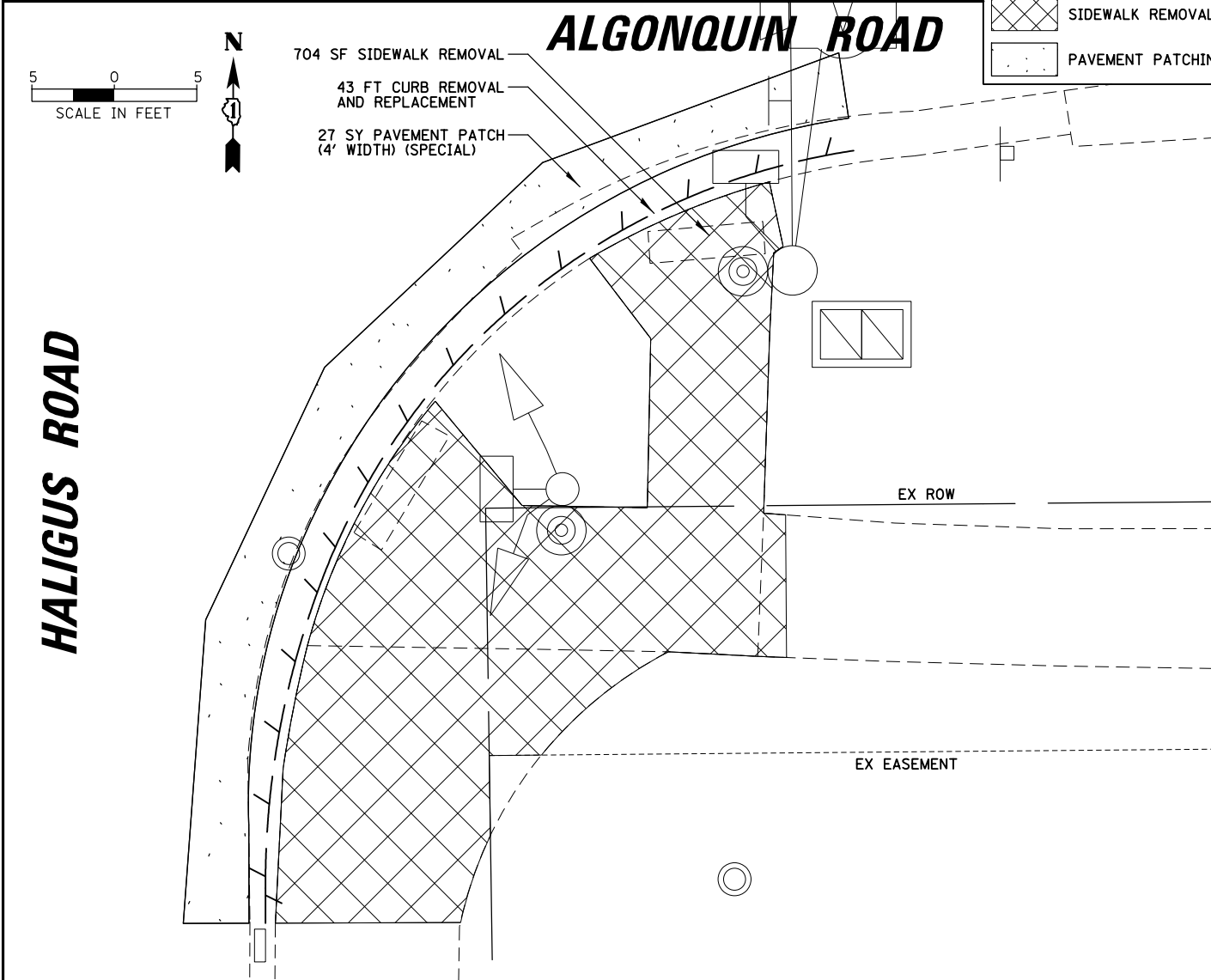
- COMBINATION CURB AND GUTTER REMOVAL
- SIDEWALK REMOVAL
- PAVEMENT PATCHING



**SW Quadrant**  
Algonquin Rd and Haligus Rd

POINT	*STA	OFFSET	ELEV
A	21+46.48	49.48' RT	889.55
B	21+50.48	51.59' RT	889.44
C	21+50.48	54.59' RT	889.45
D	21+58.48	57.31' RT	889.30
E	21+58.48	60.86' RT	889.30
F	21+70.13	71.04' RT	888.79
G	21+67.00	71.04' RT	888.78
H	21+74.33	79.04' RT	888.66
I	21+71.52	79.04' RT	888.64
J	21+75.87	83.04' RT	888.60
K	21+50.48	62.86' RT	889.37
L	21+58.48	62.86' RT	889.29
M	21+67.00	79.04' RT	888.70
N	21+50.48	71.04' RT	888.98
O	21+58.48	71.04' RT	888.90
P	21+58.48	79.04' RT	888.82
Q	21+45.56	76.16' RT	889.03
R	21+52.82	83.42' RT	888.88
S	21+36.45	76.22' RT	888.86
T	21+36.55	87.03' RT	888.51
U	21+47.00	52.63' RT	889.83
V	21+61.24	63.76' RT	889.51
W	21+64.62	67.83' RT	889.16
X	21+63.00	71.04' RT	888.84
Y	21+58.48	64.86' RT	889.20
Z	21+73.02	82.75' RT	889.02

\*SEE ALIGNMENT, TIES, AND BENCHMARKS SHEET FOR CENTERLINE DETAILS



**PROPOSED LEGEND**

- PCC SIDEWALK
- DETECTABLE WARNINGS
- SEEDING, TOPSOIL, FERTILIZER, EROSION CONTROL BLANKET

**SE Quadrant**  
Algonquin Rd and Haligus Rd

POINT	*STA	OFFSET	ELEV
A	22+72.66	46.42' RT	889.90
B	22+72.58	49.04' RT	890.21
C	22+68.66	47.19' RT	889.87
D	22+68.66	49.85' RT	889.83
E	22+60.66	49.98' RT	889.74
F	22+60.66	52.84' RT	889.70
G	22+57.18	54.81' RT	889.98
H	22+68.66	52.84' RT	889.79
I	22+68.66	54.84' RT	889.76
J	22+68.66	57.84' RT	889.72
K	22+60.66	57.84' RT	889.68
L	22+68.66	71.04' RT	888.75
M	22+60.66	71.04' RT	888.79
N	22+68.66	79.04' RT	888.63
O	22+60.66	79.04' RT	888.67
P	22+44.49	67.55' RT	889.17
Q	22+39.68	71.04' RT	888.83
R	22+42.54	71.04' RT	888.79
S	22+36.96	79.04' RT	888.71
T	22+39.49	79.04' RT	888.67
U	22+46.54	71.04' RT	888.85
V	22+51.33	71.04' RT	889.01
W	22+51.33	79.04' RT	888.80
X	22+50.31	82.12' RT	888.82
Y	22+36.05	85.16' RT	888.42
Z	22+38.13	85.30' RT	888.79
AA	22+49.25	87.01' RT	888.91
AB	22+35.95	95.00' RT	888.02
AC	22+37.53	95.01' RT	888.45
AD	22+48.78	95.05' RT	888.76

\*SEE ALIGNMENT, TIES, AND BENCHMARKS SHEET FOR CENTERLINE DETAILS

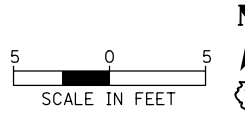
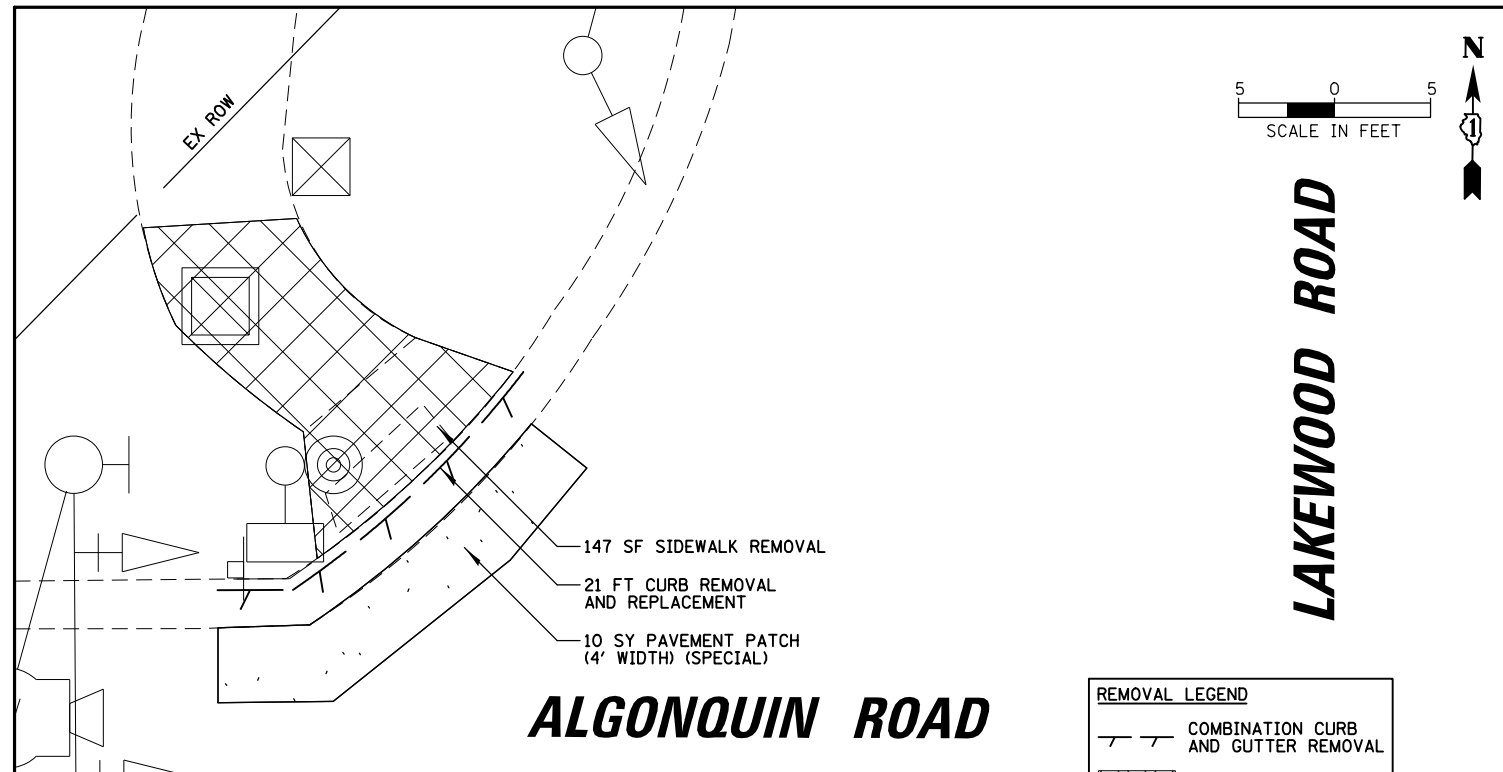
FILE NAME = ADA.180176.02	USER NAME = fbariso	DESIGNED - XXX	REVISED - 1 - SIDEWALK MODIFIED
		DRAWN - XXX	REVISED -
		CHECKED - XXX	REVISED -
		DATE -	REVISED -

STATE OF ILLINOIS  
DEPARTMENT OF TRANSPORTATION

ACCESSIBILITY REMOVAL AND MODIFICATION PLANS  
ALGONQUIN ROAD AT HALIGUS ROAD  
SCALE: 1" = 10' SHEET NO. 2 OF 8 SHEETS STA. TO STA.

F.A.P. RTE. 339	SECTION 18-00480-00-TL	COUNTY MCHENRY	TOTAL SHEETS 132	SHEET NO. 15
FED. ROAD DIST. NO.		ILLINOIS FED. AID PROJECT		

DATE: \_\_\_\_\_ BY: \_\_\_\_\_  
 SURVEYED \_\_\_\_\_ ALIGNED \_\_\_\_\_ CHECKED \_\_\_\_\_  
 PLAN NOTE BOOK NO. \_\_\_\_\_ RT. OF WAY CHECKED \_\_\_\_\_  
 PROFILE SURVEYED \_\_\_\_\_ GRADES CHECKED \_\_\_\_\_  
 NOTE BOOK NO. \_\_\_\_\_ ELEM. NOTED \_\_\_\_\_ STRUCTURE NOTATIONS OK/NO

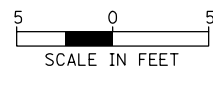
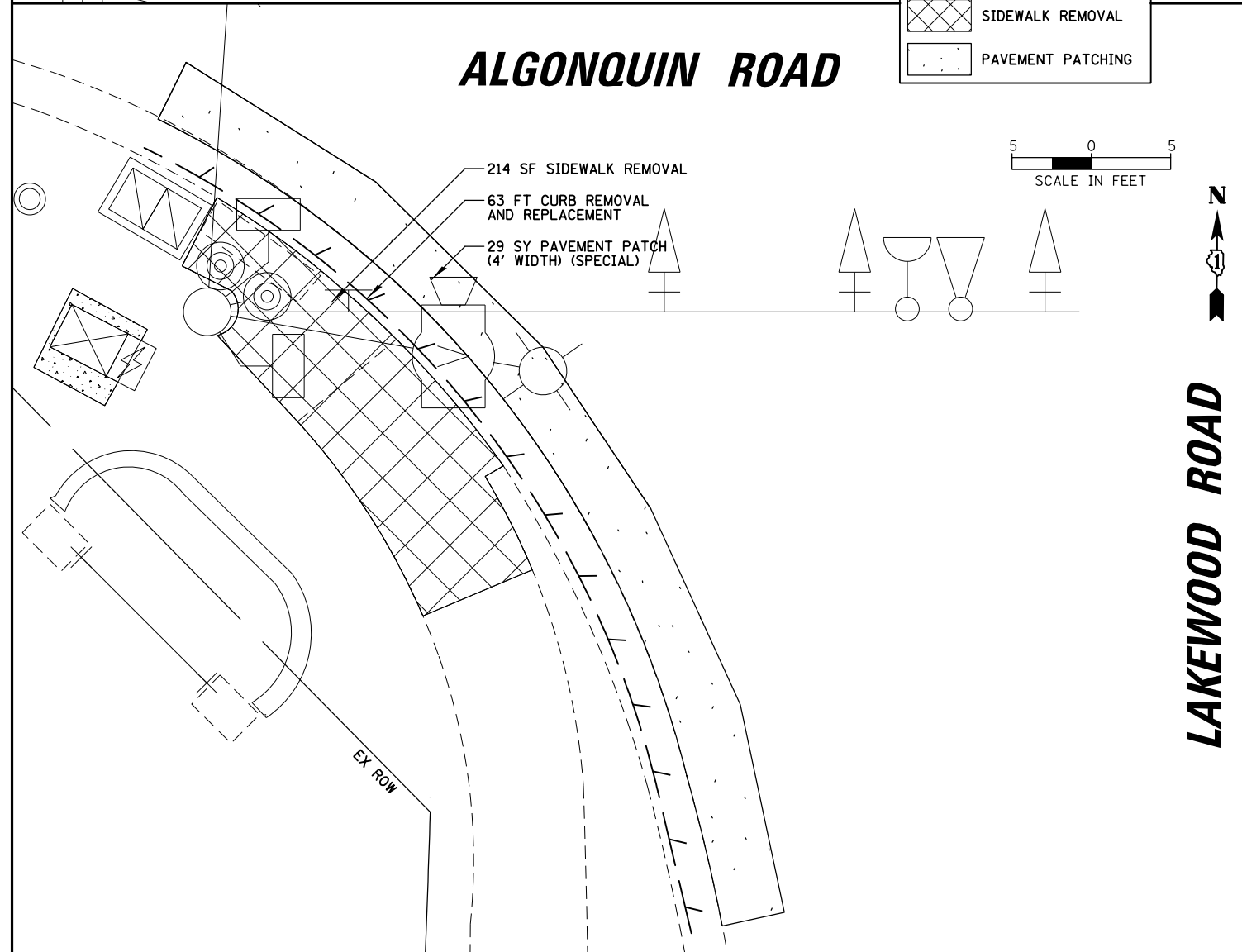


**LAKWOOD ROAD**

**ALGONQUIN ROAD**

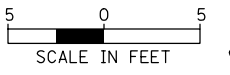
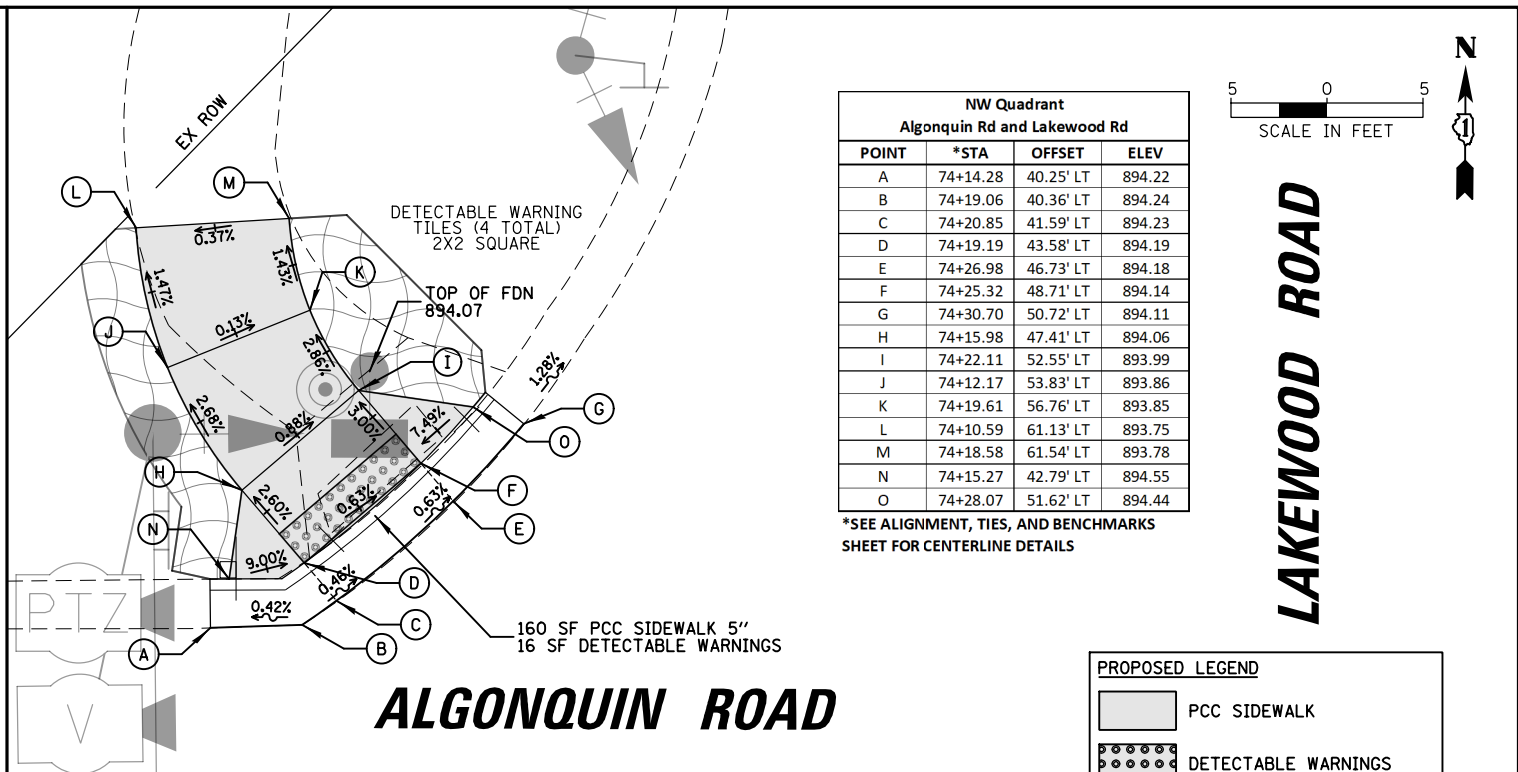
**REMOVAL LEGEND**

	COMBINATION CURB AND GUTTER REMOVAL
	SIDEWALK REMOVAL
	PAVEMENT PATCHING



**LAKWOOD ROAD**

**ALGONQUIN ROAD**



**LAKWOOD ROAD**

**ALGONQUIN ROAD**

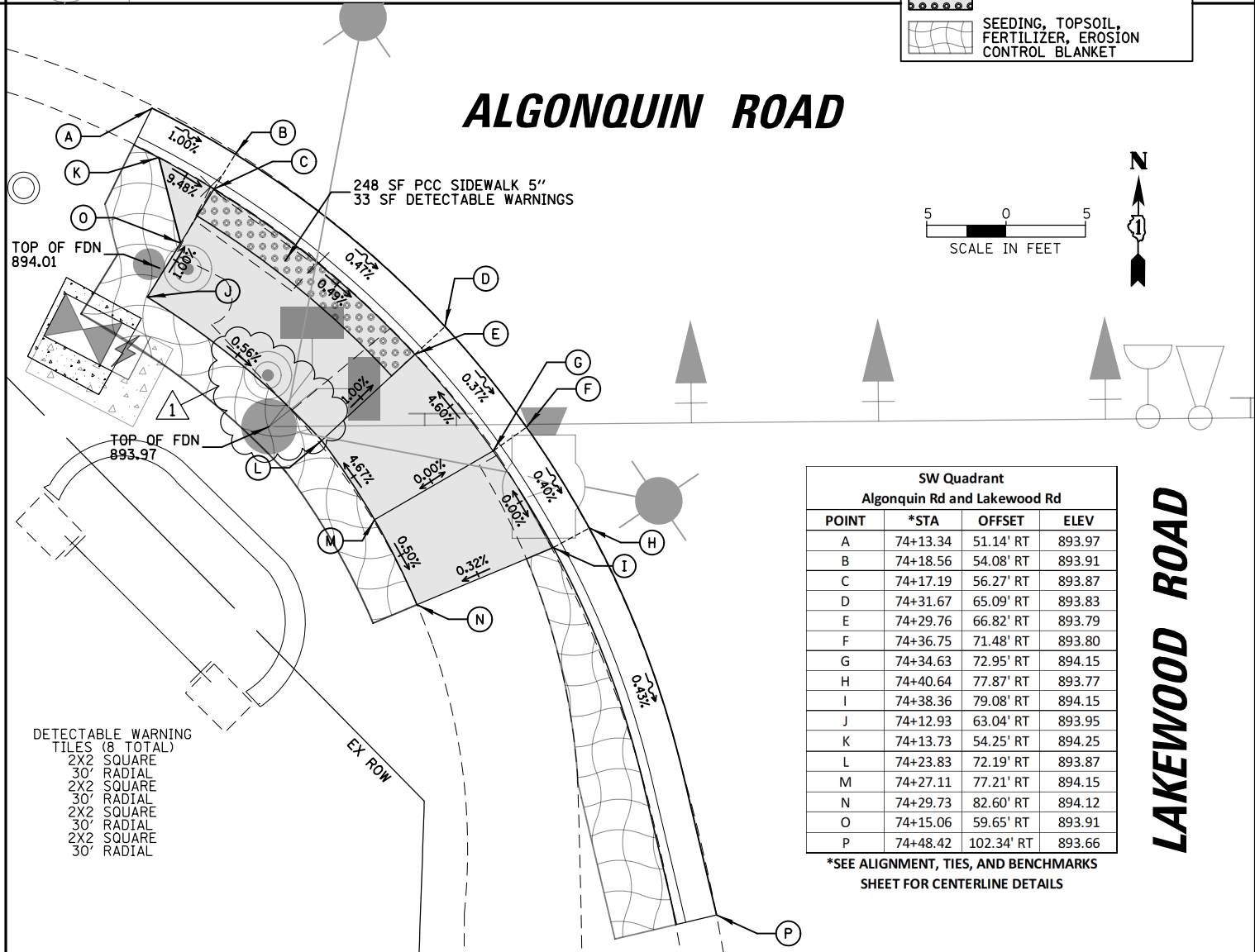
**NW Quadrant  
Algonquin Rd and Lakewood Rd**

POINT	*STA	OFFSET	ELEV
A	74+14.28	40.25' LT	894.22
B	74+19.06	40.36' LT	894.24
C	74+20.85	41.59' LT	894.23
D	74+19.19	43.58' LT	894.19
E	74+26.98	46.73' LT	894.18
F	74+25.32	48.71' LT	894.14
G	74+30.70	50.72' LT	894.11
H	74+15.98	47.41' LT	894.06
I	74+22.11	52.55' LT	893.99
J	74+12.17	53.83' LT	893.86
K	74+19.61	56.76' LT	893.85
L	74+10.59	61.13' LT	893.75
M	74+18.58	61.54' LT	893.78
N	74+15.27	42.79' LT	894.55
O	74+28.07	51.62' LT	894.44

\*SEE ALIGNMENT, TIES, AND BENCHMARKS SHEET FOR CENTERLINE DETAILS

**PROPOSED LEGEND**

	PCC SIDEWALK
	DETECTABLE WARNINGS
	SEEDING, TOPSOIL, FERTILIZER, EROSION CONTROL BLANKET



**LAKWOOD ROAD**

**ALGONQUIN ROAD**

**SW Quadrant  
Algonquin Rd and Lakewood Rd**

POINT	*STA	OFFSET	ELEV
A	74+13.34	51.14' RT	893.97
B	74+18.56	54.08' RT	893.91
C	74+17.19	56.27' RT	893.87
D	74+31.67	65.09' RT	893.83
E	74+29.76	66.82' RT	893.79
F	74+36.75	71.48' RT	893.80
G	74+34.63	72.95' RT	894.15
H	74+40.64	77.87' RT	893.77
I	74+38.36	79.08' RT	894.15
J	74+12.93	63.04' RT	893.95
K	74+13.73	54.25' RT	894.25
L	74+23.83	72.19' RT	893.87
M	74+27.11	77.21' RT	894.15
N	74+29.73	82.60' RT	894.12
O	74+15.06	59.65' RT	893.91
P	74+48.42	102.34' RT	893.66

\*SEE ALIGNMENT, TIES, AND BENCHMARKS SHEET FOR CENTERLINE DETAILS

FILE NAME = ADA.180176.03	USER NAME = fbariso	DESIGNED - XXX	REVISED 1- ADJ FOUNDATION LOCATION
		DRAWN - XXX	REVISED -
		CHECKED - XXX	REVISED -
		DATE -	REVISED -

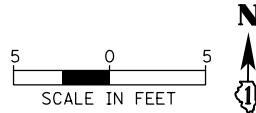
**STATE OF ILLINOIS  
DEPARTMENT OF TRANSPORTATION**

**ACCESSIBILITY REMOVAL AND MODIFICATION PLANS  
ALGONQUIN ROAD AT LAKEWOOD ROAD**

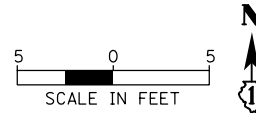
SCALE: 1" = 10' SHEET NO. 3 OF 8 SHEETS STA. TO STA.

F.A.P. RTE. 339	SECTION 18-00480-00-TL	COUNTY MCHENRY	TOTAL SHEETS 132	SHEET NO. 16
FED. ROAD DIST. NO.		ILLINOIS FED. AID PROJECT		
		CONTRACT NO. 61H50		

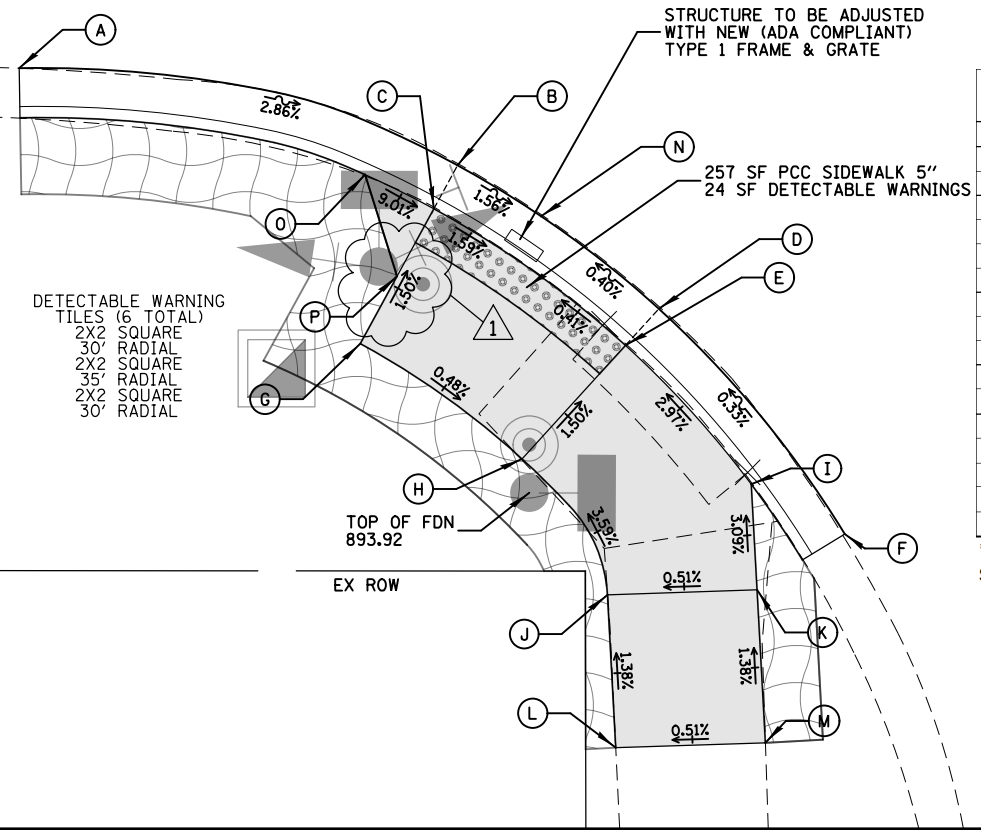
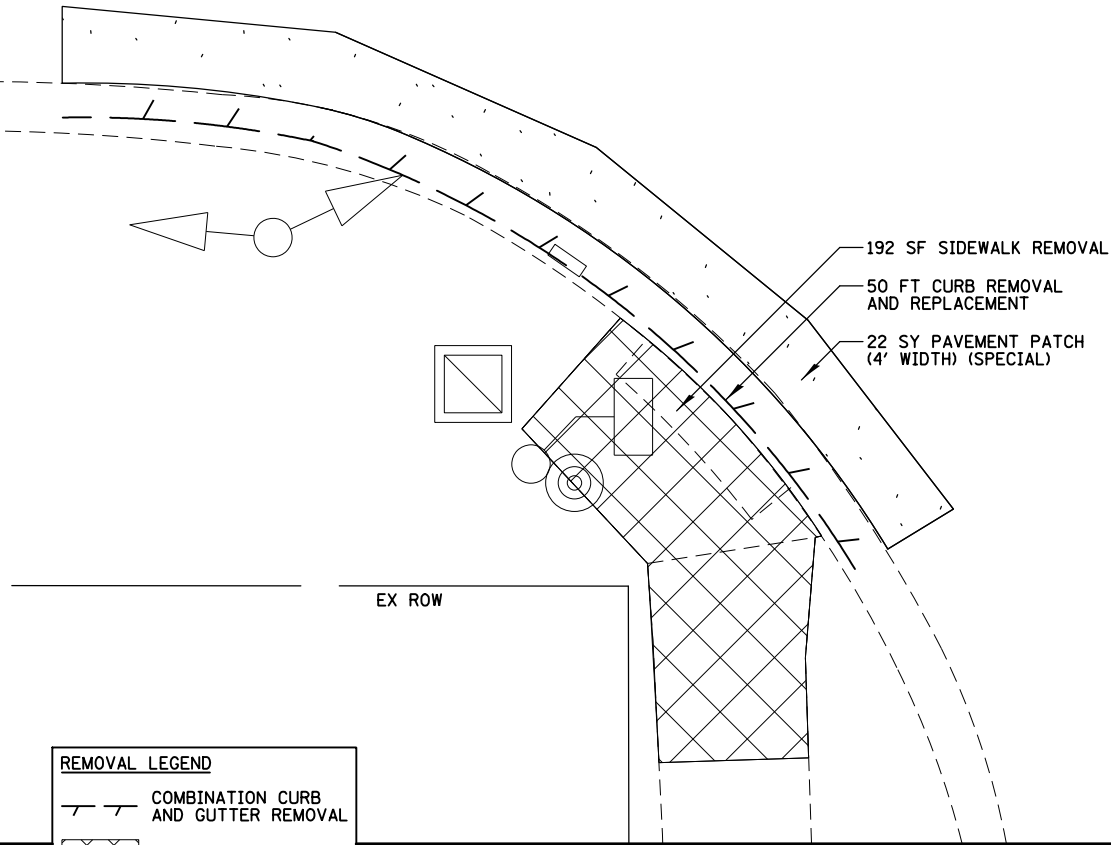
# ALGONQUIN ROAD



# ALGONQUIN ROAD



DATE: \_\_\_\_\_ BY: \_\_\_\_\_  
 SURVEYED: \_\_\_\_\_ ALIGNED: \_\_\_\_\_ CHECKED: \_\_\_\_\_  
 PLAN: \_\_\_\_\_ NOTE BOOK: \_\_\_\_\_ RT. OF WAY CHECKED: \_\_\_\_\_  
 NO. \_\_\_\_\_  
 PROFILE: \_\_\_\_\_ GRADES CHECKED: \_\_\_\_\_ B.M. NOTED: \_\_\_\_\_  
 NO. \_\_\_\_\_ STRUCTURE NOTATIONS: OK/NO



SW Quadrant Algonquin Rd and Square Barn Rd			
POINT	*STA	OFFSET	ELEV
A	113+66.20	43.44' RT	894.39
B	113+89.05	48.49' RT	893.72
C	113+87.81	50.76' RT	893.72
D	113+99.54	55.96' RT	893.67
E	113+97.80	57.87' RT	893.67
F	114+09.23	67.69' RT	893.72
G	113+83.99	57.78' RT	893.84
H	113+92.42	63.78' RT	893.79
I	114+04.36	65.10' RT	893.96
J	113+96.87	70.86' RT	894.09
K	114+04.67	70.60' RT	894.13
L	113+97.31	78.82' RT	894.20
M	114+05.11	78.57' RT	894.24
N	113+93.43	51.14' RT	893.64
O	113+84.23	48.98' RT	894.10
P	113+85.90	54.27' RT	893.78

\*SEE ALIGNMENT, TIES, AND BENCHMARKS SHEET FOR CENTERLINE DETAILS

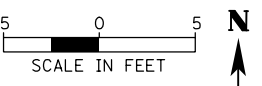
**REMOVAL LEGEND**

- COMBINATION CURB AND GUTTER REMOVAL
- SIDEWALK REMOVAL
- PAVEMENT PATCHING

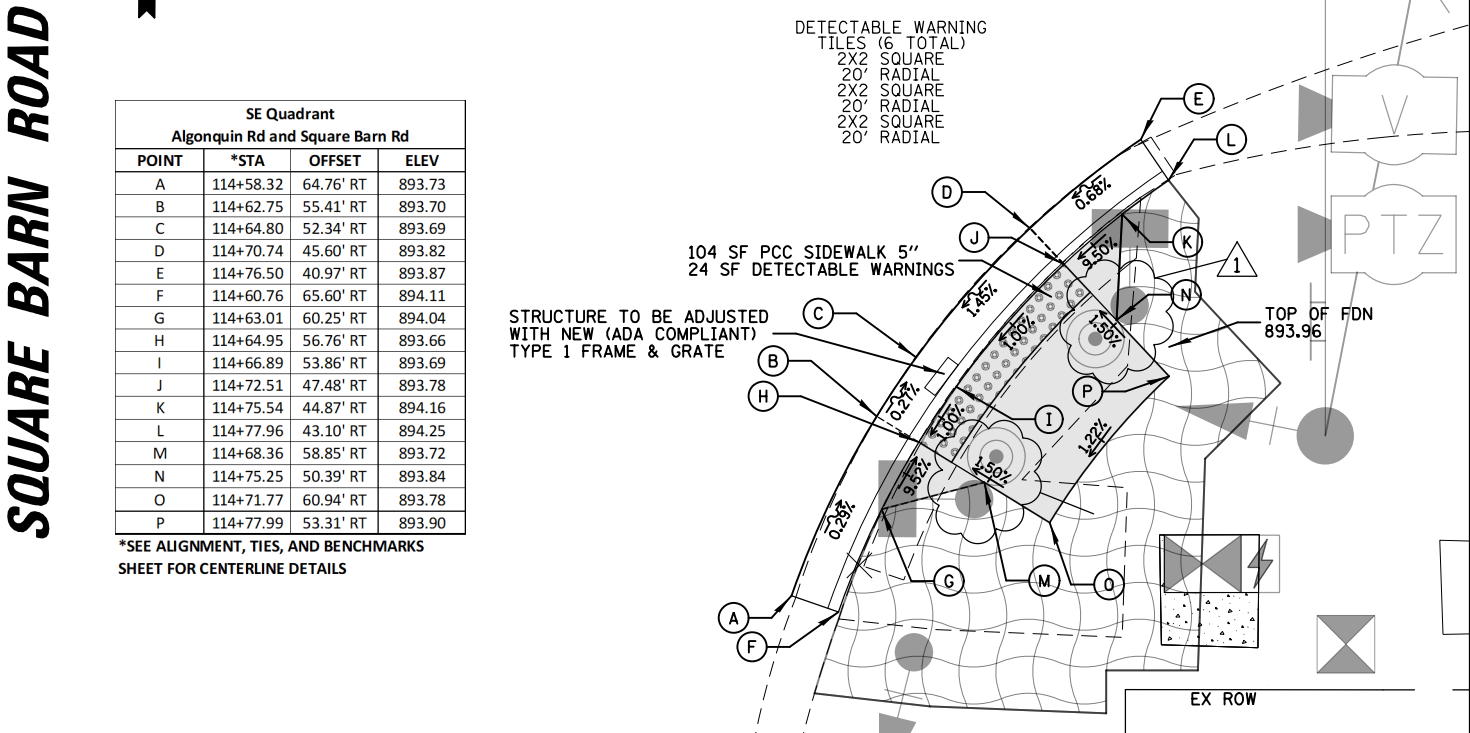
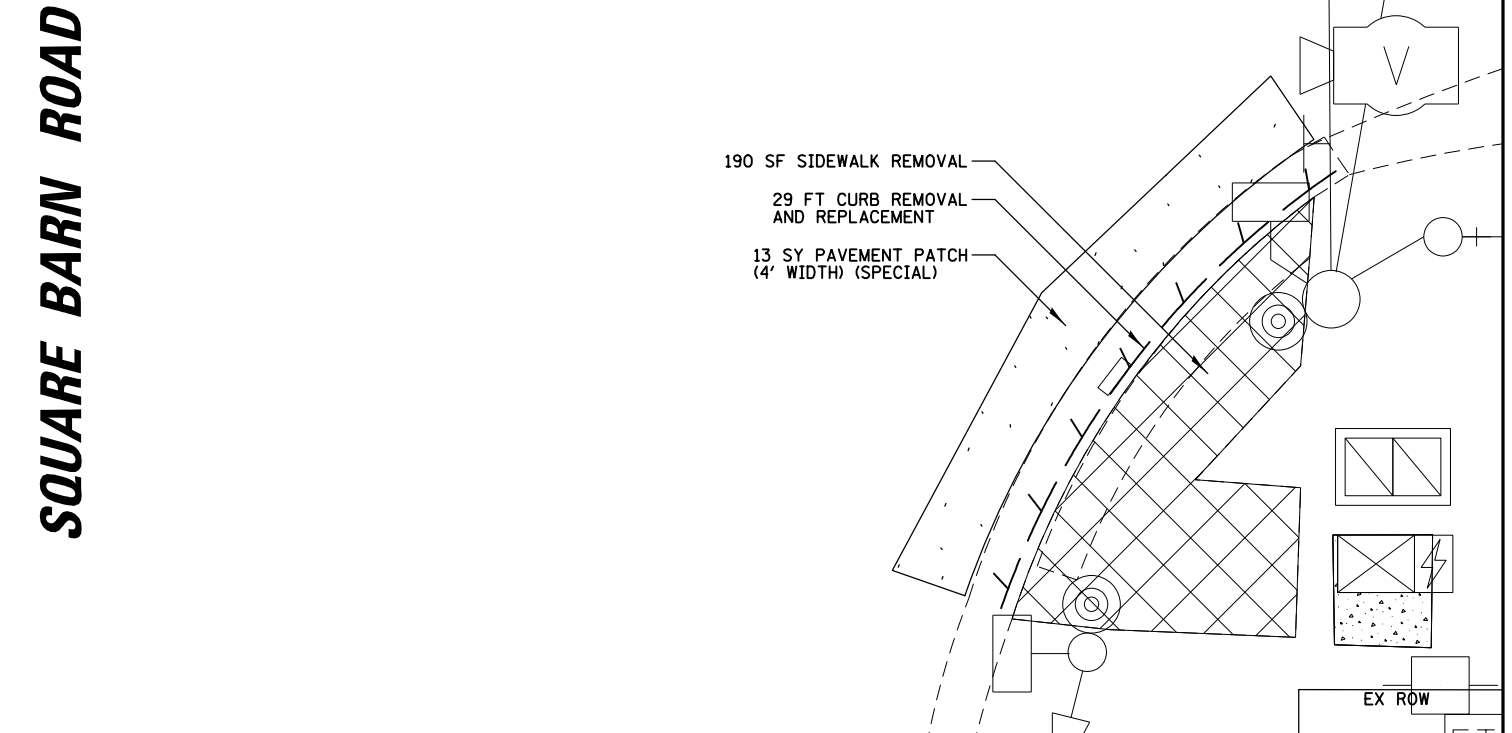
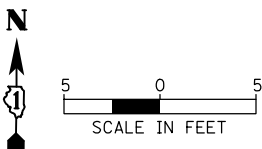
**PROPOSED LEGEND**

- PCC SIDEWALK
- DETECTABLE WARNINGS
- SEEDING, TOPSOIL, FERTILIZER, EROSION CONTROL BLANKET

# ALGONQUIN ROAD



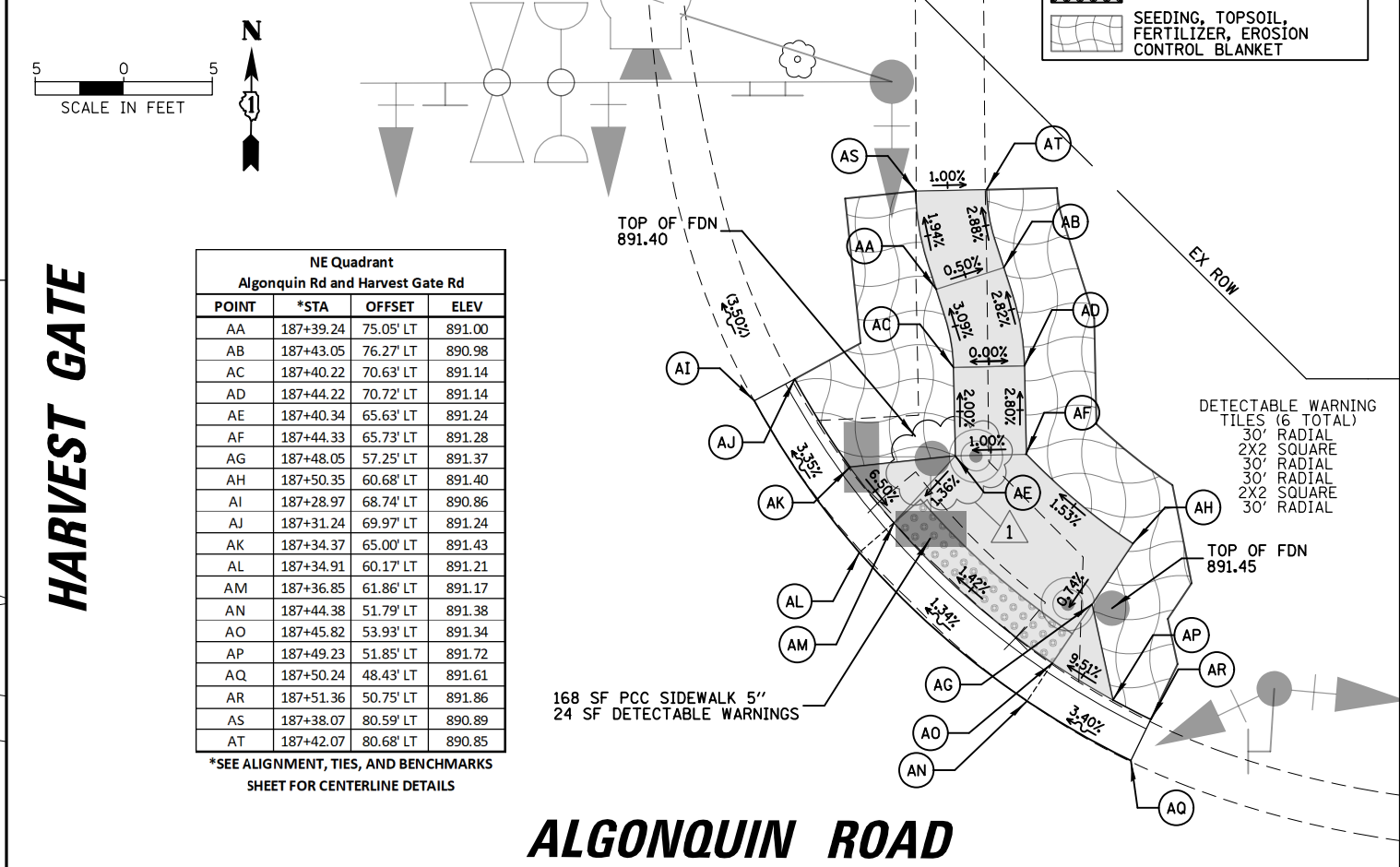
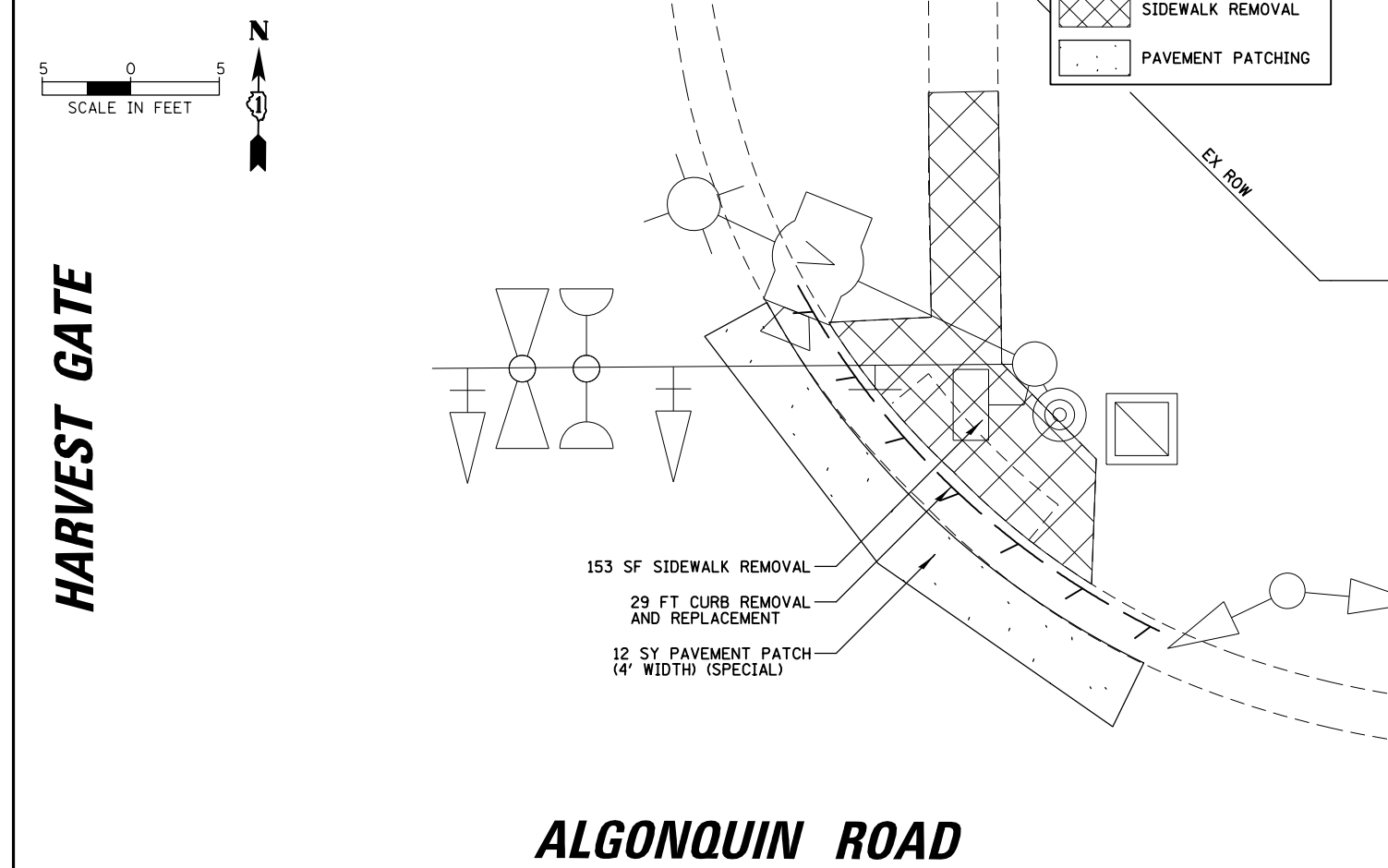
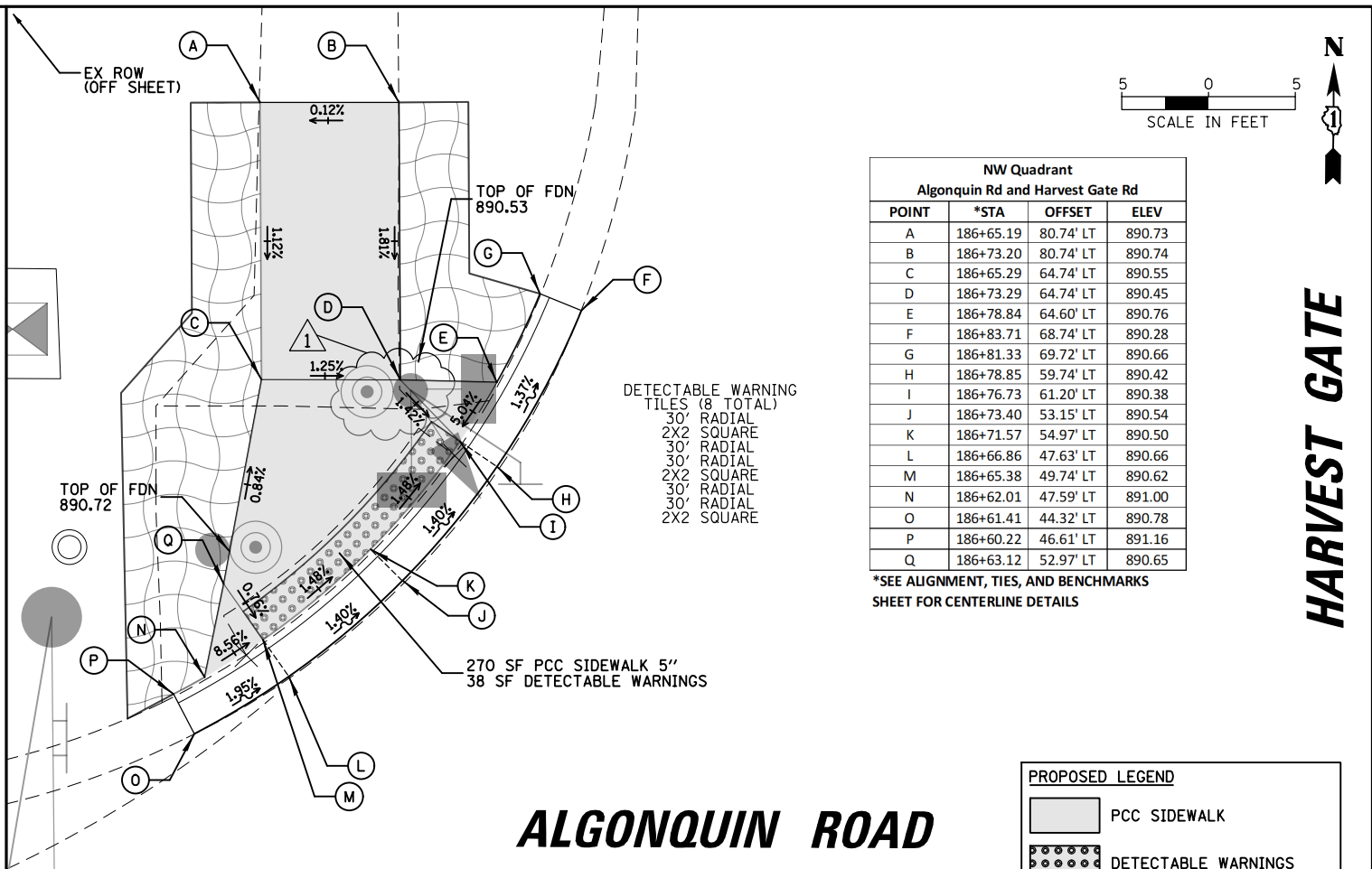
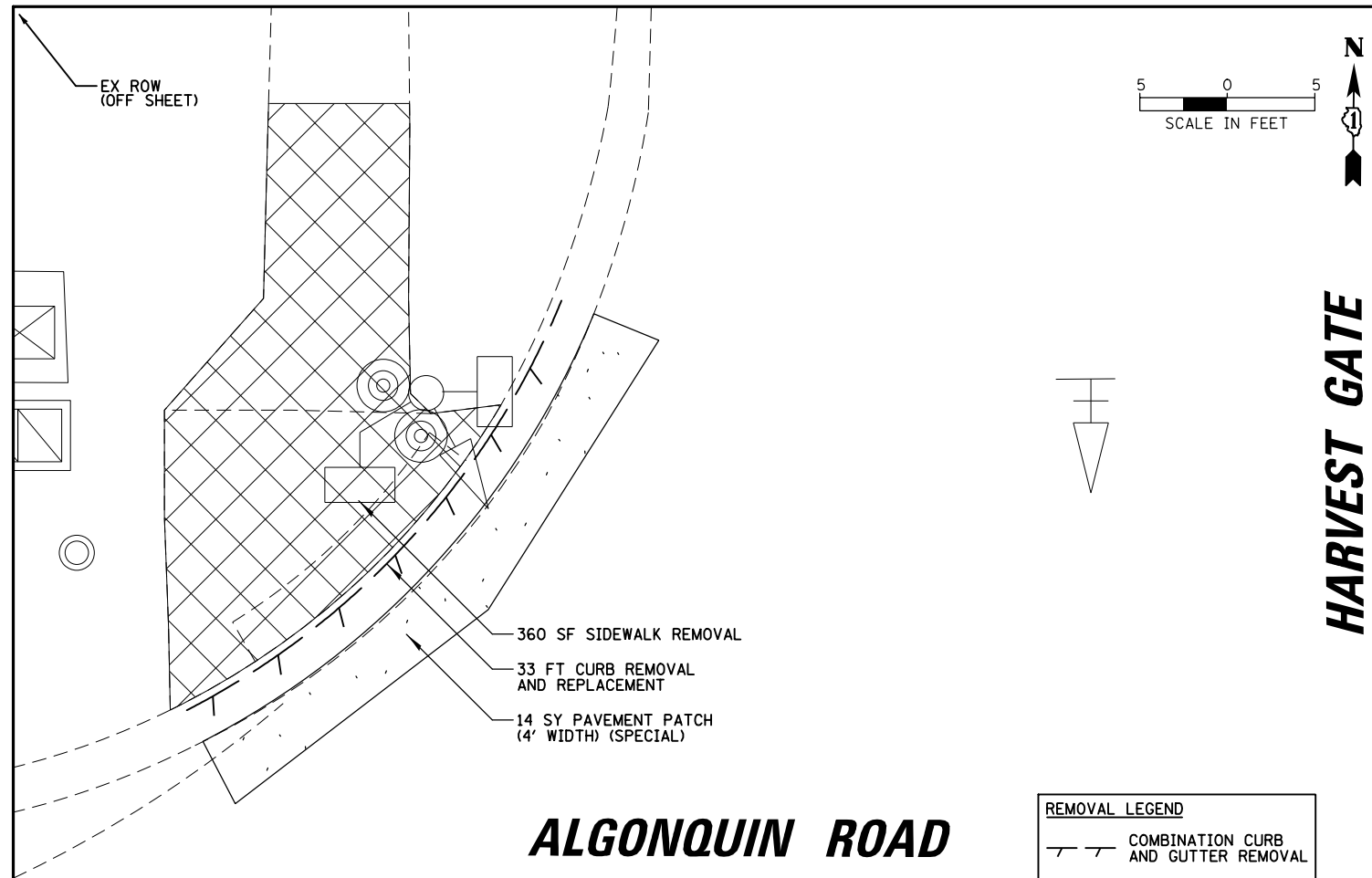
# ALGONQUIN ROAD



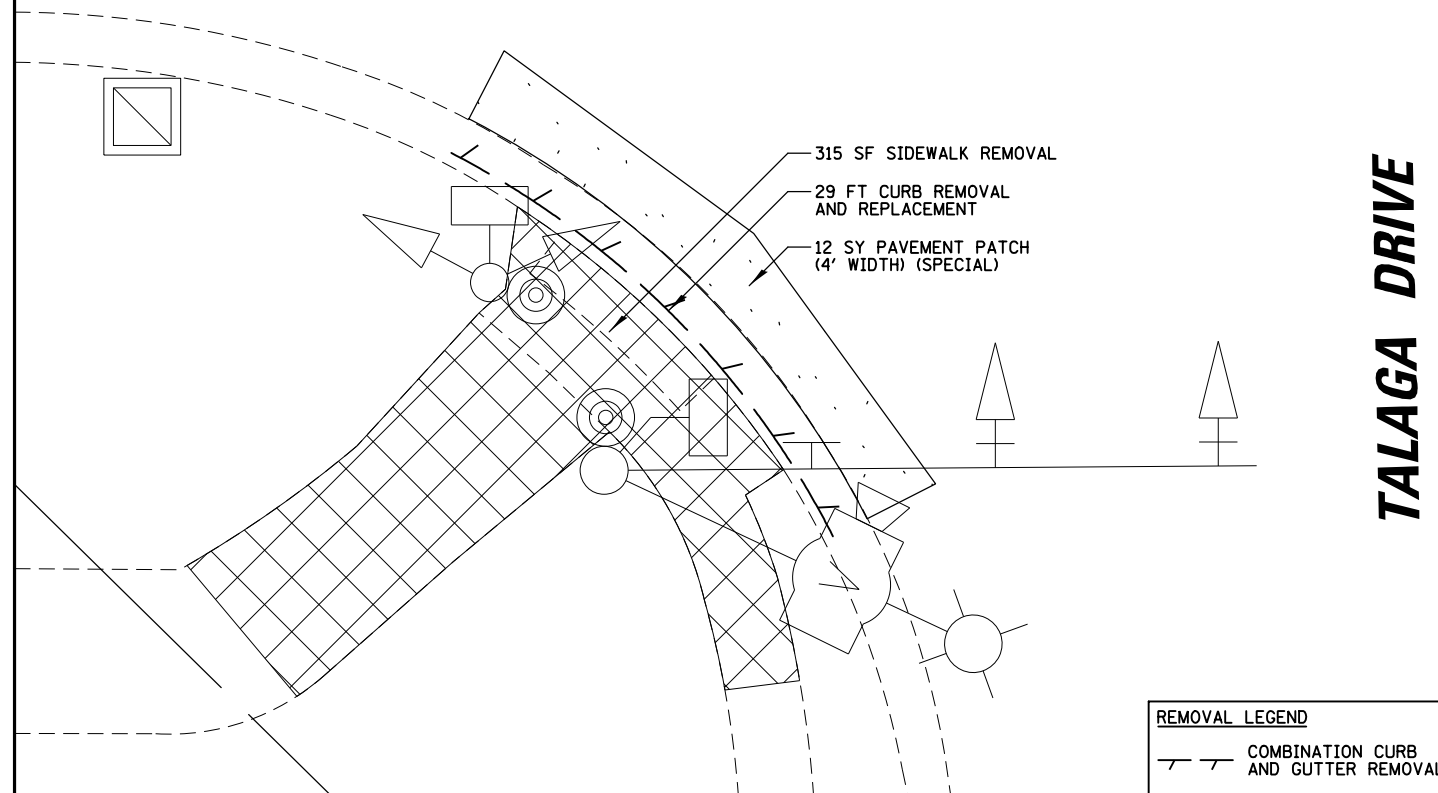
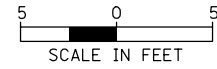
SE Quadrant Algonquin Rd and Square Barn Rd			
POINT	*STA	OFFSET	ELEV
A	114+58.32	64.76' RT	893.73
B	114+62.75	55.41' RT	893.70
C	114+64.80	52.34' RT	893.69
D	114+70.74	45.60' RT	893.82
E	114+76.50	40.97' RT	893.87
F	114+60.76	65.60' RT	894.11
G	114+63.01	60.25' RT	894.04
H	114+64.95	56.76' RT	893.66
I	114+66.89	53.86' RT	893.69
J	114+72.51	47.48' RT	893.78
K	114+75.54	44.87' RT	894.16
L	114+77.96	43.10' RT	894.25
M	114+68.36	58.85' RT	893.72
N	114+75.25	50.39' RT	893.84
O	114+71.77	60.94' RT	893.78
P	114+77.99	53.31' RT	893.90

\*SEE ALIGNMENT, TIES, AND BENCHMARKS SHEET FOR CENTERLINE DETAILS

DATE: \_\_\_\_\_ BY: \_\_\_\_\_  
 SURVEYED: \_\_\_\_\_ ALIGNED: \_\_\_\_\_ CHECKED: \_\_\_\_\_  
 NOTE BOOK: \_\_\_\_\_ RT. OF WAY CHECKED: \_\_\_\_\_  
 NO.: \_\_\_\_\_ CAD FILE NAME: \_\_\_\_\_  
 DATE: \_\_\_\_\_ BY: \_\_\_\_\_  
 SURVEYED: \_\_\_\_\_ GRADES CHECKED: \_\_\_\_\_  
 NOTE BOOK: \_\_\_\_\_ ELEM. NOTED: \_\_\_\_\_  
 NO.: \_\_\_\_\_ STRUCTURE NOTATIONS: \_\_\_\_\_



# ALGONQUIN ROAD

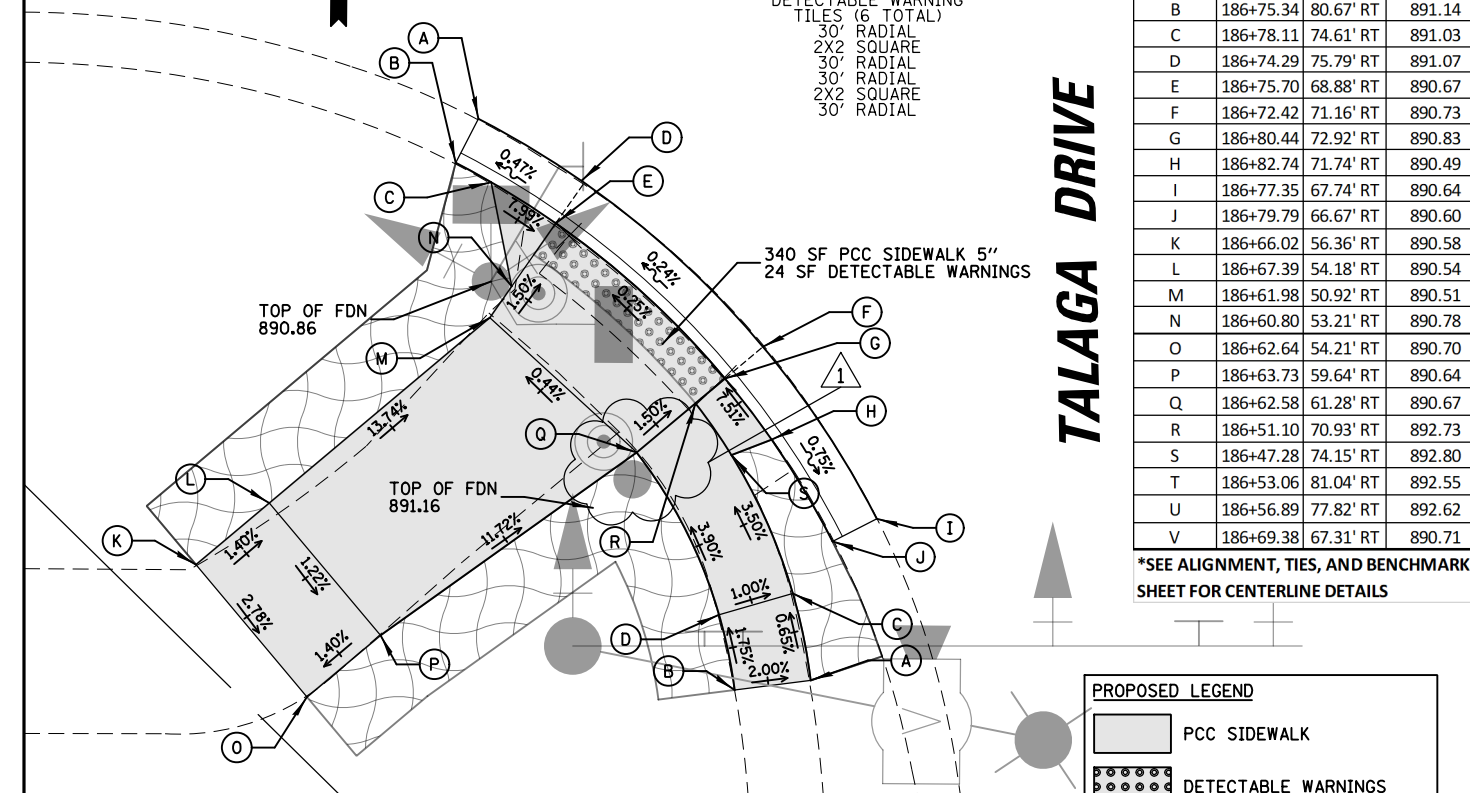
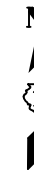
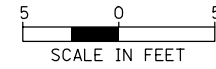


TALAGA DRIVE

**REMOVAL LEGEND**

- COMBINATION CURB AND GUTTER REMOVAL
- SIDEWALK REMOVAL
- PAVEMENT PATCHING

# ALGONQUIN ROAD



TALAGA DRIVE

SW Quadrant  
Algonquin Rd and Talaga Rd

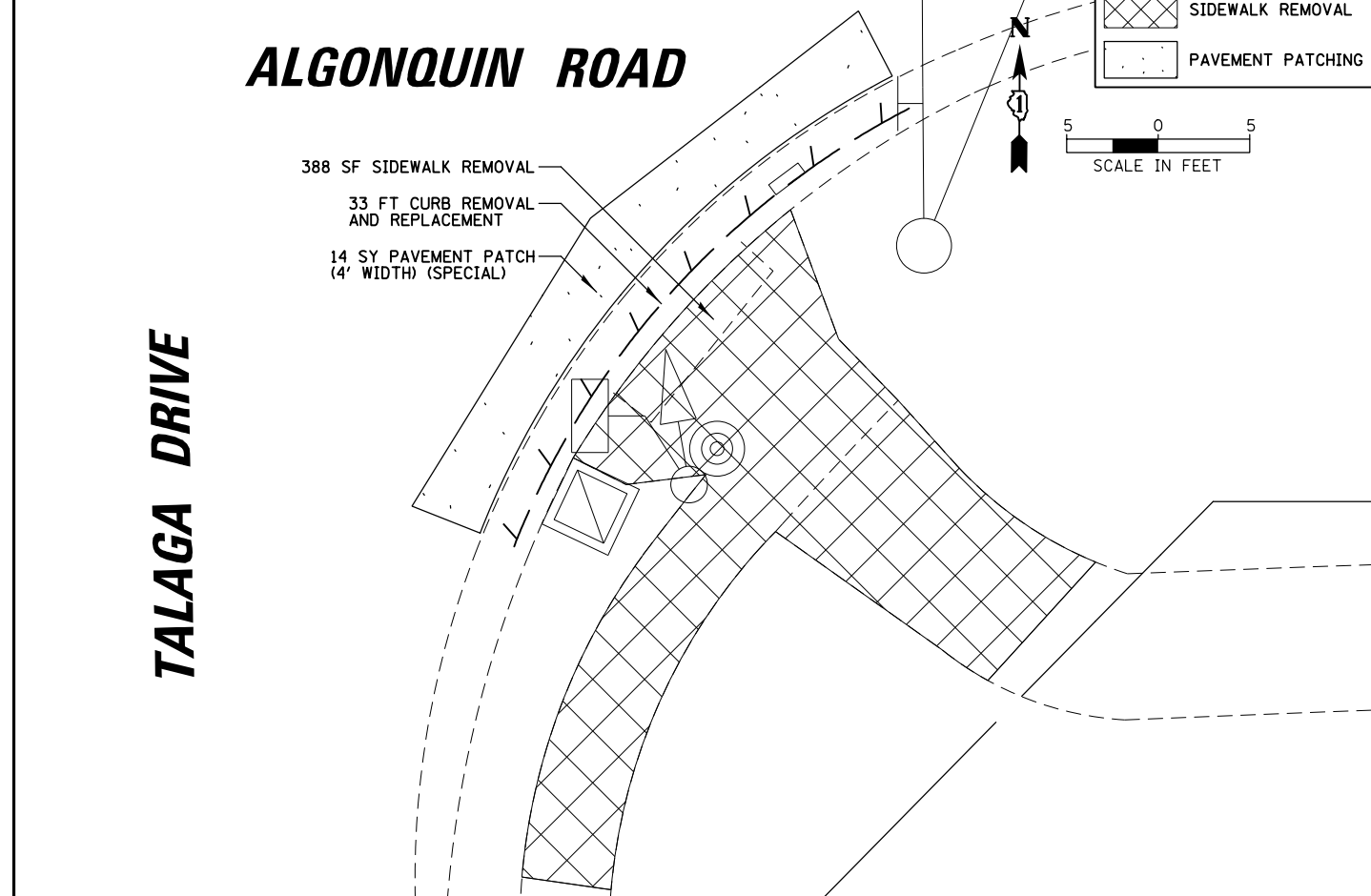
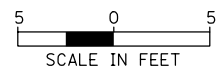
POINT	*STA	OFFSET	ELEV
A	186+79.31	80.17' RT	891.06
B	186+75.34	80.67' RT	891.14
C	186+78.11	74.61' RT	891.03
D	186+74.29	75.79' RT	891.07
E	186+75.70	68.88' RT	890.67
F	186+72.42	71.16' RT	890.73
G	186+80.44	72.92' RT	890.83
H	186+82.74	71.74' RT	890.49
I	186+77.35	67.74' RT	890.64
J	186+79.79	66.67' RT	890.60
K	186+66.02	56.36' RT	890.58
L	186+67.39	54.18' RT	890.54
M	186+61.98	50.92' RT	890.51
N	186+60.80	53.21' RT	890.78
O	186+62.64	54.21' RT	890.70
P	186+63.73	59.64' RT	890.64
Q	186+62.58	61.28' RT	890.67
R	186+51.10	70.93' RT	892.73
S	186+47.28	74.15' RT	892.80
T	186+53.06	81.04' RT	892.55
U	186+56.89	77.82' RT	892.62
V	186+69.38	67.31' RT	890.71

\*SEE ALIGNMENT, TIES, AND BENCHMARKS SHEET FOR CENTERLINE DETAILS

**PROPOSED LEGEND**

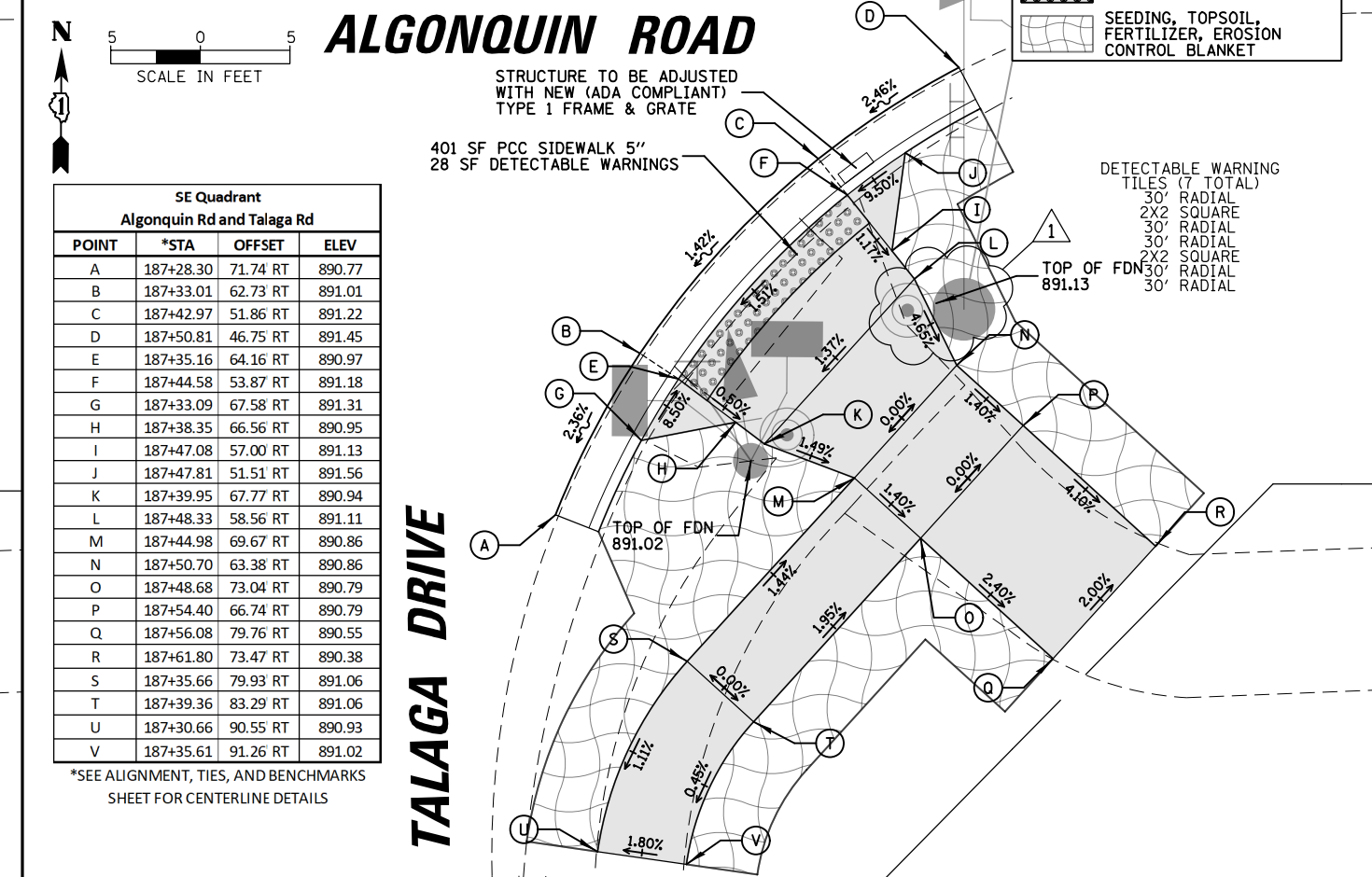
- PCC SIDEWALK
- DETECTABLE WARNINGS
- SEEDING, TOPSOIL, FERTILIZER, EROSION CONTROL BLANKET

# ALGONQUIN ROAD



TALAGA DRIVE

# ALGONQUIN ROAD



SE Quadrant  
Algonquin Rd and Talaga Rd

POINT	*STA	OFFSET	ELEV
A	187+28.30	71.74 RT	890.77
B	187+33.01	62.73 RT	891.01
C	187+42.97	51.86 RT	891.22
D	187+50.81	46.75 RT	891.45
E	187+35.16	64.16 RT	890.97
F	187+44.58	53.87 RT	891.18
G	187+33.09	67.58 RT	891.31
H	187+38.35	66.56 RT	890.95
I	187+47.08	57.00 RT	891.13
J	187+47.81	51.51 RT	891.56
K	187+39.95	67.77 RT	890.94
L	187+48.33	58.56 RT	891.11
M	187+44.98	69.67 RT	890.86
N	187+50.70	63.38 RT	890.86
O	187+48.68	73.04 RT	890.79
P	187+54.40	66.74 RT	890.79
Q	187+56.08	79.76 RT	890.55
R	187+61.80	73.47 RT	890.38
S	187+35.66	79.93 RT	891.06
T	187+39.36	83.29 RT	891.06
U	187+30.66	90.55 RT	890.93
V	187+35.61	91.26 RT	891.02

\*SEE ALIGNMENT, TIES, AND BENCHMARKS SHEET FOR CENTERLINE DETAILS

DATE	BY	SURVEYED	ALIGNED	CHECKED	DATE	BY	SURVEYED	ALIGNED	CHECKED
PLAN	NOTE BOOK NO.	NO.	NO.	NO.	PROFILE	NOTE BOOK NO.	NO.	NO.	NO.

FILE NAME = ADA.180176_08	USER NAME = fbariso	DESIGNED - XXX	REVISED - 1 - ADJ FOUNDATION LOCATION
		DRAWN - XXX	REVISED -
		CHECKED - XXX	REVISED -
		DATE -	REVISED -

STATE OF ILLINOIS  
DEPARTMENT OF TRANSPORTATION

ACCESSIBILITY REMOVAL AND MODIFICATION PLANS  
ALGONQUIN ROAD AT TALAGA ROAD

SCALE: 1" = 10' SHEET NO. 7 OF 7 SHEETS STA. TO STA.

F.A.P. RTE. 339	SECTION 18-00480-00-TL	COUNTY MCHENRY	TOTAL SHEETS 132	SHEET NO. 21
CONTRACT NO. 61H50		FED. ROAD DIST. NO. ILLINOIS FED. AID PROJECT		

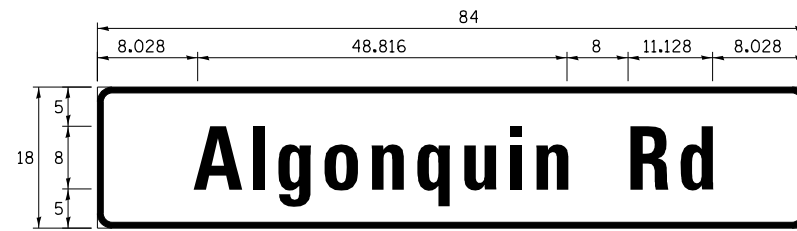




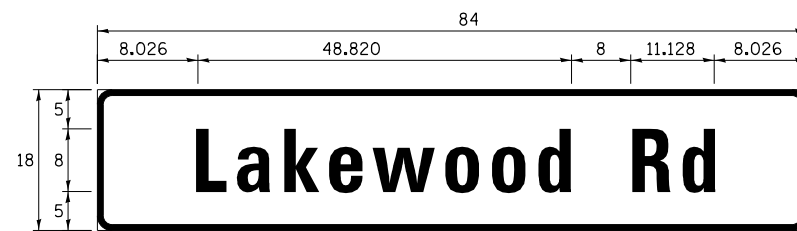
**SCHEDULE OF QUANTITIES**

**LED ILLUMINATED STREET NAME SIGNS**

ALL DIMENSIONS ARE IN INCHES UNLESS NOTED OTHERWISE



DESIGN SERIES	AREA (SQ FT)	SHEETING TYPE	QTY. REQUIRED
D	10.5	ZZ	2



DESIGN SERIES	AREA (SQ FT)	SHEETING TYPE	QTY. REQUIRED
D	10.5	ZZ	2

ITEM	UNIT	QUANTITY
CHANGEABLE MESSAGE SIGN	CAL DA	28
SIGN PANEL - TYPE 1	SQ FT	60
UNDERGROUND CONDUIT, GALVANIZED STEEL, 2" DIA.	FOOT	24
UNDERGROUND CONDUIT, GALVANIZED STEEL, 3" DIA.	FOOT	38
UNDERGROUND CONDUIT, GALVANIZED STEEL, 5" DIA.	FOOT	18
ELECTRIC CABLE IN CONDUIT, SIGNAL NO. 14 2C	FOOT	468
ELECTRIC CABLE IN CONDUIT, SIGNAL NO. 14 3C	FOOT	1228
ELECTRIC CABLE IN CONDUIT, SIGNAL NO. 14 5C	FOOT	2578
ELECTRIC CABLE IN CONDUIT, SIGNAL NO. 14 7C	FOOT	2310.5
ELECTRIC CABLE IN CONDUIT, SERVICE, NO. 6 2 C	FOOT	153
ELECTRIC CABLE IN CONDUIT, EQUIPMENT GROUNDING CONDUCTOR, NO. 6 1C	FOOT	944
TRAFFIC SIGNAL POST, 10 FT.	EACH	1
TRAFFIC SIGNAL POST, GALVANIZED STEEL 16 FT.	EACH	4
STEEL COMBINATION MAST ARM ASSEMBLY AND POLE 50 FT.	EACH	1
STEEL COMBINATION MAST ARM ASSEMBLY AND POLE 54 FT.	EACH	1
STEEL COMBINATION MAST ARM ASSEMBLY AND POLE 56 FT.	EACH	1
STEEL COMBINATION MAST ARM ASSEMBLY AND POLE 68 FT.	EACH	1
CONCRETE FOUNDATION, TYPE A	FOOT	8
CONCRETE FOUNDATION, TYPE D	FOOT	4
CONCRETE FOUNDATION, TYPE E 36-INCH DIAMETER	FOOT	30
CONCRETE FOUNDATION, TYPE E 42-INCH DIAMETER	FOOT	50
DRILL EXISTING FOUNDATION	EACH	1
DRILL EXISTING HANDHOLE	EACH	8
SIGNAL HEAD, LED, 1-FACE, 3-SECTION, MAST-ARM MOUNTED	EACH	9
SIGNAL HEAD, LED, 1-FACE, 3-SECTION, BRACKET MOUNTED	EACH	4
SIGNAL HEAD, LED, 1-FACE, 4-SECTION, BRACKET MOUNTED	EACH	2
SIGNAL HEAD, LED, 1-FACE, 4-SECTION, MAST ARM MOUNTED	EACH	2
SIGNAL HEAD, LED, 1-FACE, 5-SECTION, BRACKET MOUNTED	EACH	3
SIGNAL HEAD, LED, 1-FACE, 5-SECTION, MAST-ARM MOUNTED	EACH	3
PEDESTRIAN SIGNAL HEAD, LED, 1-FACE, BRACKET MOUNTED WITH COUNTDOWN TIMER	EACH	4
TRAFFIC SIGNAL BACKPLATE	EACH	23
TEMPORARY TRAFFIC SIGNAL INSTALLATION	EACH	1
RELOCATE EXISTING EMERGENCY VEHICLE PRIORITY SYSTEM, DETECTOR UNIT	EACH	3
RELOCATE EXISTING EMERGENCY VEHICLE PRIORITY SYSTEM, PHASING UNIT	EACH	1
REMOVE ELECTRIC CABLE FROM CONDUIT	FOOT	7573.5
REMOVE EXISTING TRAFFIC SIGNAL EQUIPMENT	EACH	1
REBUILD EXISTING HANDHOLE	EACH	1
REMOVE EXISTING CONCRETE FOUNDATION	EACH	6
MODIFY EXISTING SERVICE INSTALLATION	EACH	1
EMERGENCY VEHICLE PRIORITY SYSTEM LINE SENSOR CABLE, NO. 20 3/C	FOOT	742
** ROD AND CLEAN EXISTING CONDUIT	FOOT	500
LED INTERNALLY ILLUMINATED STREET NAME SIGN	EACH	4
OUTDOOR RATED NETWORK CABLE	FOOT	245
ELECTRIC CABLE IN CONDUIT, STREET NAME SIGN, NO. 14 3C, TYPE SOOW	FOOT	841
CONDUIT SPLICE	EACH	10
FULL-ACTUATED CONTROLLER AND TYPE IV CABINET, SPECIAL	EACH	1
UNINTERRUPTABLE POWER SUPPLY, SPECIAL	EACH	1
PEDESTRIAN PUSH-BUTTON POST, TYPE A	EACH	1
ACCESSIBLE PEDESTRIAN SIGNALS	EACH	4
REMOVE EXISTING UNDERGROUND CONDUIT	FOOT	9
LOCATING UNDERGROUND UTILITY	EACH	2
VIDEO DETECTION SYSTEM COMPLETE INTERSECTION	EACH	1
INTERSECTION VIDEO TRAFFIC MONITORING SYSTEM WITH PTZ CAMERA	EACH	1
ETHERNET SWITCH, TYPE 2	EACH	1
TEMPORARY INFORMATION SIGNING	SQ FT	102.8
TEMPORARY TRAFFIC SIGNAL TIMING	EACH	1

\*\*Nominal Quantity to be used as Directed by the Engineer

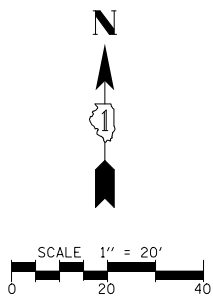
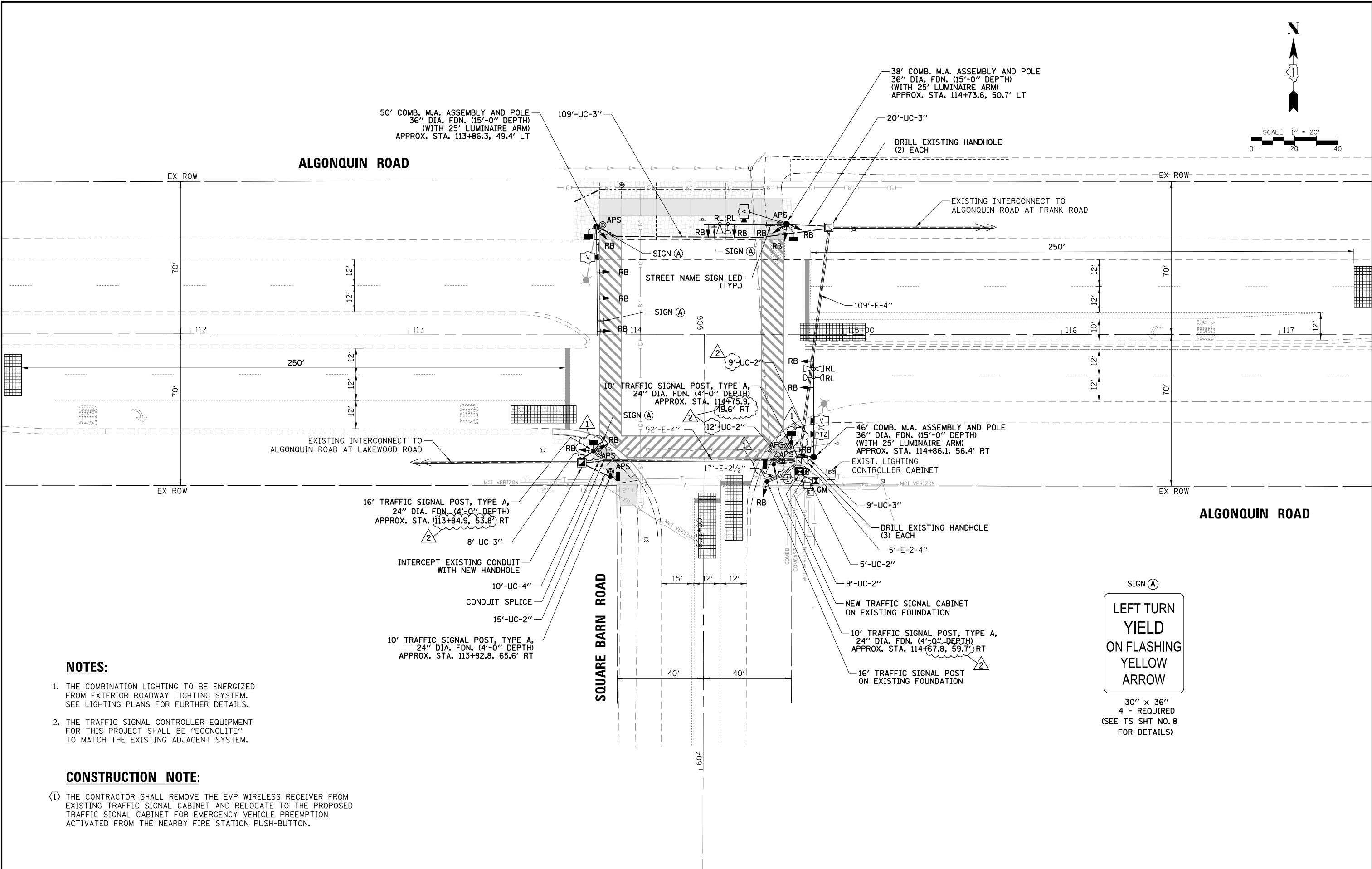
DATE	BY	DATE	BY
SURVEYED	ALIGNED	CHECKED	CHECKED
GRADES	NOTED	STRUCTURE	NOTATIONS
PLANNED	NOTE BOOK	NO.	

TS SHT NO.20

FILE NAME = TS2.Lakewood-06.STN	USER NAME = fbariso	DESIGNED - TFS	REVISED 1 - PAY ITEM ADDED	STATE OF ILLINOIS DEPARTMENT OF TRANSPORTATION	SCHEDULE OF QUANTITIES AND MAST ARM MOUNTED STREET NAME SIGN ALGONQUIN ROAD AT LAKEWOOD ROAD	F.A.P. RTE.	SECTION	COUNTY	TOTAL SHEETS	SHEET NO.
	PLOT SCALE = 48"	DRAWN - FPB	REVISED -			18-00480-00-TL	MCHENRY	132	45	
	PLOT DATE = 2/25/2022	CHECKED - GMZ	REVISED -			CONTRACT NO. 61H50				
		DATE -	REVISED -	SCALE: NOT TO SCALE	SHEET NO. OF SHEETS STA. TO STA.	FED. ROAD DIST. NO.	ILLINOIS FED. AID PROJECT			

DATE	BY	DATE	BY
DATE	BY	DATE	BY
DATE	BY	DATE	BY
DATE	BY	DATE	BY

TS SHT NO.24



**NOTES:**

1. THE COMBINATION LIGHTING TO BE ENERGIZED FROM EXTERIOR ROADWAY LIGHTING SYSTEM. SEE LIGHTING PLANS FOR FURTHER DETAILS.
2. THE TRAFFIC SIGNAL CONTROLLER EQUIPMENT FOR THIS PROJECT SHALL BE "ECONOLITE" TO MATCH THE EXISTING ADJACENT SYSTEM.

**CONSTRUCTION NOTE:**

- ① THE CONTRACTOR SHALL REMOVE THE EVP WIRELESS RECEIVER FROM EXISTING TRAFFIC SIGNAL CABINET AND RELOCATE TO THE PROPOSED TRAFFIC SIGNAL CABINET FOR EMERGENCY VEHICLE PREEMPTION ACTIVATED FROM THE NEARBY FIRE STATION PUSH-BUTTON.



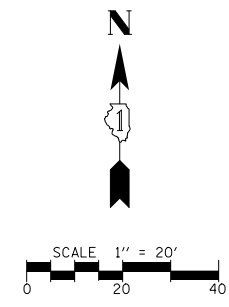
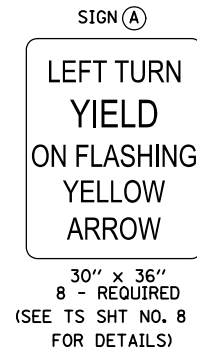
FILE NAME = TS3.Square Barn-04.MXD	USER NAME = fbariso	DESIGNED - TFS	REVISOR 1 - ADJ FOUNDATION LOCATION	STATE OF ILLINOIS DEPARTMENT OF TRANSPORTATION	TRAFFIC SIGNAL MODERNIZATION PLAN ALGONQUIN ROAD AT SQUARE BARN ROAD	F.A.P. RTE.	SECTION	COUNTY	TOTAL SHEETS	SHEET NO.	
		DRAWN - FPB	REVISOR 2 - ADJ SIGNAL HEAD LOCATION, MA & CONDUIT LENGTH/LABEL			18-00480-00-TL	MCHENRY	132	49		
		CHECKED - GMZ	REVISOR -			CONTRACT NO. 61H50					
		DATE -	REVISOR -			FED. ROAD DIST. NO.	ILLINOIS FED. AID PROJECT				
SCALE: 1" = 40'						SHEET NO.	OF SHEETS	STA.	TO STA.		

**NOTES:**

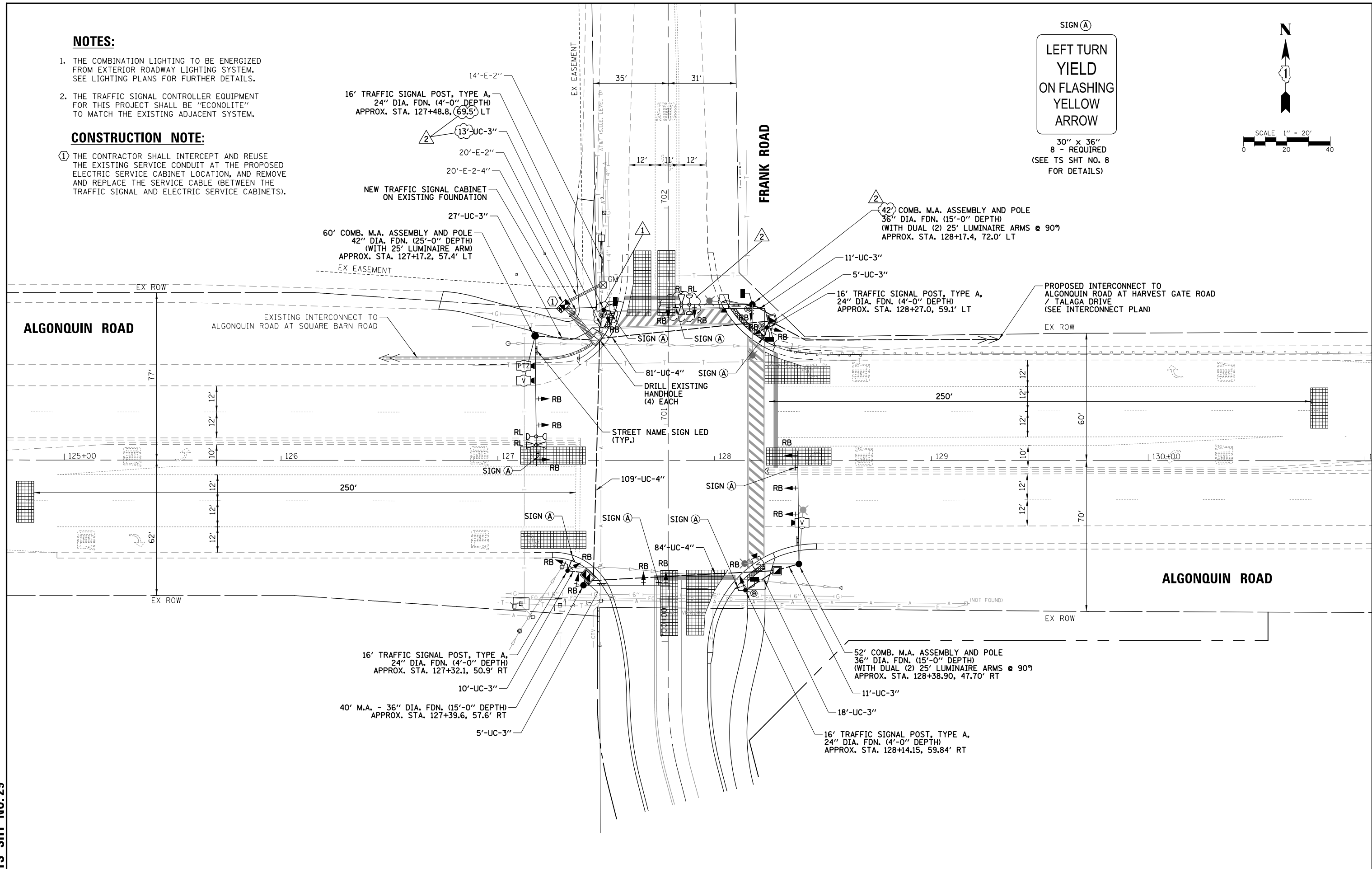
1. THE COMBINATION LIGHTING TO BE ENERGIZED FROM EXTERIOR ROADWAY LIGHTING SYSTEM. SEE LIGHTING PLANS FOR FURTHER DETAILS.
2. THE TRAFFIC SIGNAL CONTROLLER EQUIPMENT FOR THIS PROJECT SHALL BE "ECONOLITE" TO MATCH THE EXISTING ADJACENT SYSTEM.

**CONSTRUCTION NOTE:**

- ① THE CONTRACTOR SHALL INTERCEPT AND REUSE THE EXISTING SERVICE CONDUIT AT THE PROPOSED ELECTRIC SERVICE CABINET LOCATION, AND REMOVE AND REPLACE THE SERVICE CABLE (BETWEEN THE TRAFFIC SIGNAL AND ELECTRIC SERVICE CABINETS).



DATE	BY	SURVEYED	ALIGNED	CHECKED
DATE	BY	GRADES	CHECKED	
DATE	BY	BLM. NOTED		
DATE	BY	STRUCTURE	NOTATIONS	OK/NO



TS SHT NO.29

FILE NAME = TS4_Frank-03.MXD	USER NAME = fbariso	DESIGNED - TFS	REVISOR 1 - ADJ POST FDN LOCATION	<b>STATE OF ILLINOIS DEPARTMENT OF TRANSPORTATION</b>	<b>TRAFFIC SIGNAL MODERNIZATION PLAN ALGONQUIN ROAD AT FRANK ROAD</b>	F.A.P. RTE.	SECTION	COUNTY	TOTAL SHEETS	SHEET NO.
		DRAWN - FPB	REVISOR 2 - ADJ SIGNAL HEAD LOCATION, MA & CONDUIT LENGTH/LABEL			18-00480-00-TL	MCHENRY	132	54	
		CHECKED - GMZ	REVISOR -			CONTRACT NO. 61H50				
		DATE -	REVISOR -			FED. ROAD DIST. NO.	ILLINOIS FED. AID PROJECT			

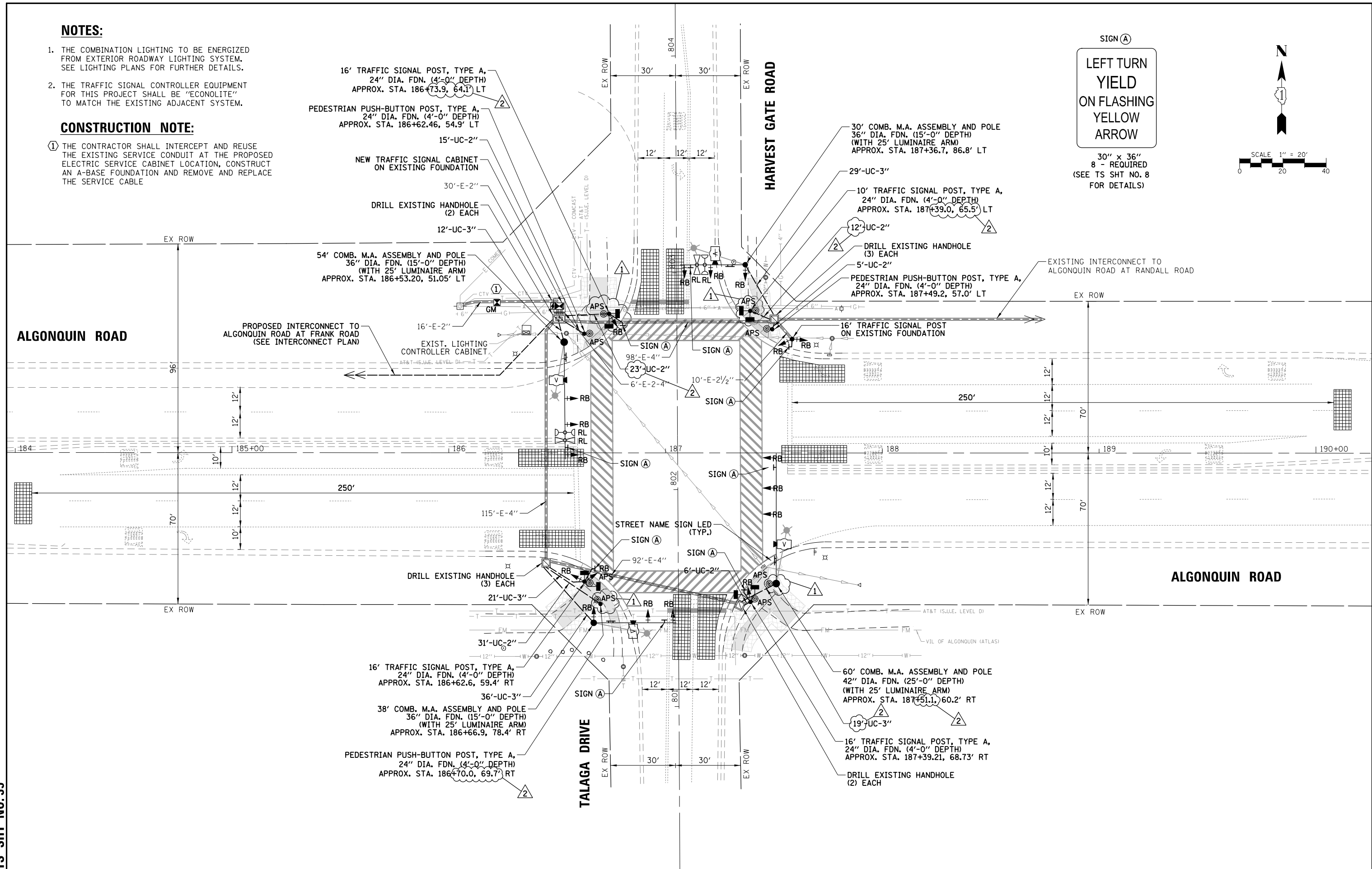
**NOTES:**

1. THE COMBINATION LIGHTING TO BE ENERGIZED FROM EXTERIOR ROADWAY LIGHTING SYSTEM. SEE LIGHTING PLANS FOR FURTHER DETAILS.
2. THE TRAFFIC SIGNAL CONTROLLER EQUIPMENT FOR THIS PROJECT SHALL BE "ECONOLITE" TO MATCH THE EXISTING ADJACENT SYSTEM.

**CONSTRUCTION NOTE:**

- ① THE CONTRACTOR SHALL INTERCEPT AND REUSE THE EXISTING SERVICE CONDUIT AT THE PROPOSED ELECTRIC SERVICE CABINET LOCATION, CONSTRUCT AN A-BASE FOUNDATION AND REMOVE AND REPLACE THE SERVICE CABLE

DATE	BY	SURVEYED	ALIGNED	CHECKED	FILE NAME
DATE	BY	GRADES	CHECKED	BLM. NOTED	STRUCTURE NOTATIONS
DATE	BY	NO. OF WAY	CHECKED	NO.	NO.



TS SHT NO.35

FILE NAME - TSS_Harvest Gate-04.MDD	USER NAME - fbariso	DESIGNED - TFS	REVISED 1 - ADJ FOUNDATION LOCATION	STATE OF ILLINOIS DEPARTMENT OF TRANSPORTATION			TRAFFIC SIGNAL MODERNIZATION PLAN ALGONQUIN ROAD AT HARVEST GATE ROAD / TALAGA DRIVE			F.A.P. RTE.	SECTION	COUNTY	TOTAL SHEETS	SHEET NO.
		DRAWN - FPB	REVISED 2 - ADJ SIGNAL HEAD LOCATION, MA & CONDUIT LENGTH/LABEL							SCALE: 1" = 40'	SHEET NO.	OF SHEETS	STA.	TO STA.
		CHECKED - GMZ	REVISED -							CONTRACT NO. 61H50				
		DATE -	REVISED -							FED. ROAD DIST. NO. ILLINOIS FED. AID PROJECT				