

MODEL: 2D MODEL  
 FILE NAME: P:\p\p\hdsess001\HDR\_US\_Centex\01\Documents\1\DOT\DOT\_Phs II\_Spec\_Various TO's\_199-15\DOT\_PTB\_199-15\_T02\_Ogden\6.0 CAD\_BIM\6.2\_VIP\6.2.3\_CADD\_SheetRoadway\SUMMARY OF QUANTITIES

CODE NO.	DESCRIPTION	UNIT	TOTAL QUANTITY URBAN	0005 80% FED 20% STATE	0005 100% STATE
20100110	TREE REMOVAL (6 TO 15 UNITS DIAMETER)	UNIT	89	89	
20100210	TREE REMOVAL (OVER 15 UNITS DIAMETER)	UNIT	23	23	
20101300	TREE PRUNING (1 TO 10 INCH DIAMETER)	EACH	1	1	
20101350	TREE PRUNING (OVER 10 INCH DIAMETER)	EACH	49	49	
20200100	EARTH EXCAVATION	CU YD	175.0	175.0	
20201200	REMOVAL AND DISPOSAL OF UNSUITABLE MATERIAL	CU YD	19	19	
21101615	TOPSOIL FURNISH AND PLACE, 4"	SQ YD	90	90	
25000750	MOWING	ACRE	0.2	0.2	
25003210	INTERSEEDING, CLASS 2A	ACRE	0.2	0.2	
25200110	SODDING, SALT TOLERANT	SQ YD	90	90	
25200200	SUPPLEMENTAL WATERING	UNIT	1	1	
28000510	INLET FILTERS	EACH	110	110	
30300001	AGGREGATE SUBGRADE IMPROVEMENT	CU YD	18	18	
30300112	AGGREGATE SUBGRADE IMPROVEMENT 12"	SQ YD	137	137	
31101200	SUBBASE GRANULAR MATERIAL, TYPE B 4"	SQ YD	308	308	
35400425	PORTLAND CEMENT CONCRETE BASE COURSE WIDENING 9'-1/4"	SQ YD	137	137	
35600713	HOT-MIX ASPHALT BASE COURSE WIDENING, 9 1/4"	SQ YD	137	137	
40600275	BITUMINOUS MATERIALS (PRIME COAT)	POUND	307	307	
40600290	BITUMINOUS MATERIALS (TACK COAT)	POUND	51,502	51,502	
40600370	LONGITUDINAL JOINT SEALANT	FOOT	47,714	47,714	
40600400	MIXTURE FOR CRACKS, JOINTS, AND FLANGEWAYS	TON	64	64	
40600982	HOT-MIX ASPHALT SURFACE REMOVAL - BUTT JOINT	SQ YD	924	924	
40604172	POLYMERIZED HOT-MIX ASPHALT SURFACE COURSE, IL-9.5, MIX "E", N70	TON	11,196	11,196	
42001300	PROTECTIVE COAT	SQ YD	394	394	
42300400	PORTLAND CEMENT CONCRETE DRIVEWAY PAVEMENT, 8 INCH	SQ YD	86	86	
42400200	PORTLAND CEMENT CONCRETE SIDEWALK 5 INCH	SQ FT	3,361	3,361	

1


CODE NO.	DESCRIPTION	UNIT	TOTAL QUANTITY URBAN	0005 80% FED 20% STATE	0005 100% STATE
42400800	DETECTABLE WARNINGS	SQ FT	267	267	
44000156	HOT-MIX ASPHALT SURFACE REMOVAL, 1 3/4"	SQ YD	113,939	113,939	
44000200	DRIVEWAY PAVEMENT REMOVAL	SQ YD	76	76	
44000500	COMBINATION CURB AND GUTTER REMOVAL	FOOT	1,755	1,755	
44000600	SIDEWALK REMOVAL	SQ FT	3,338	3,338	
44201761	CLASS D PATCHES, TYPE I, 10 INCH	SQ YD	5	5	
44201765	CLASS D PATCHES, TYPE II, 10 INCH	SQ YD	1,507	1,507	
44201769	CLASS D PATCHES, TYPE III, 10 INCH	SQ YD	662	662	
44201771	CLASS D PATCHES, TYPE IV, 10 INCH	SQ YD	352	352	
60252800	CATCH BASINS TO BE RECONSTRUCTED	EACH	12	12	
60262700	INLETS TO BE RECONSTRUCTED	EACH	2	2	
60300305	FRAMES AND LIDS TO BE ADJUSTED	EACH	30	30	
60404800	FRAMES AND GRATES, TYPE 11	EACH	2	2	
60406000	FRAMES AND LIDS, TYPE 1, OPEN LID	EACH	7	7	
60406100	FRAMES AND LIDS, TYPE 1, CLOSED LID	EACH	10	10	
60603800	COMBINATION CONCRETE CURB AND GUTTER, TYPE B-6.12	FOOT	1,755	1,755	
* 66900200	NON-SPECIAL WASTE DISPOSAL	CU YD	185	185	
* 66900530	SOIL DISPOSAL ANALYSIS	EACH	5	5	
* 66901001	REGULATED SUBSTANCES PRE-CONSTRUCTION PLAN	L SUM	1	1	
* 66901003	REGULATED SUBSTANCES FINAL CONSTRUCTION REPORT	L SUM	1	1	
* 66901006	REGULATED SUBSTANCES MONITORING	CAL DA	30	30	
67100100	MOBILIZATION	L SUM	1	1	
70102625	TRAFFIC CONTROL AND PROTECTION, STANDARD 701606	L SUM	1	1	
70102630	TRAFFIC CONTROL AND PROTECTION, STANDARD 701601	L SUM	1	1	
* 70102632	TRAFFIC CONTROL AND PROTECTION, STANDARD 701602	L SUM	1	1	

1

1

**LEGEND**

\* - DENOTES SPECIALTY ITEM

 HDR 9450 W. BRYN MAWR AVE. ROSEMONT, IL 60018	USER NAME = MMICZEK	DESIGNED - MM	REVISED -
	PLOT SCALE = 200.0000' / in.	DRAWN - HL	REVISED -
	PLOT DATE = 10/1/2021	CHECKED - EN	REVISED -
		DATE - 12/10/2021	REVISED -

**STATE OF ILLINOIS  
DEPARTMENT OF TRANSPORTATION**

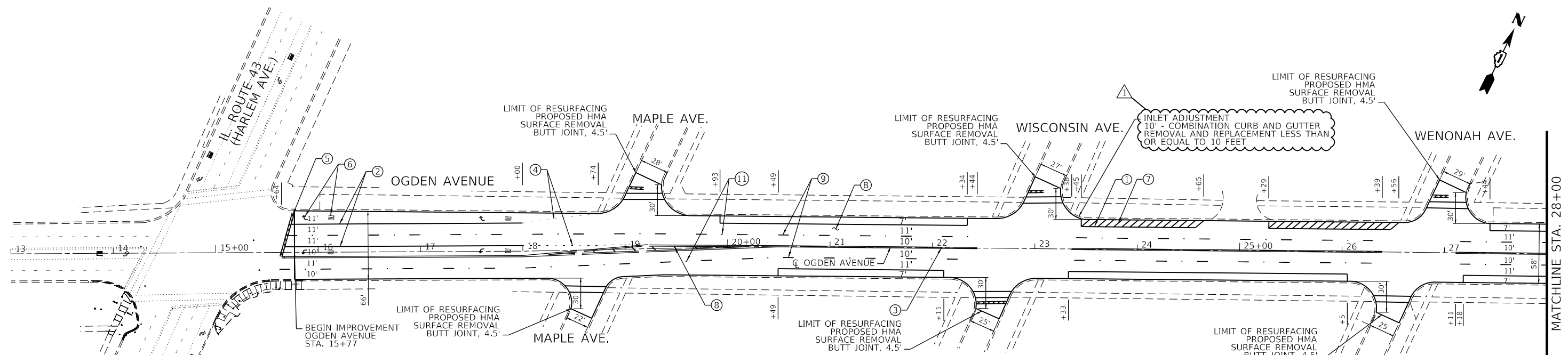
**SUMMARY OF QUANTITIES  
OGDEN AVE. - IL 43 (HARLEM AVE. TO 50TH AVE.)**

SCALE: N.T.S. SHEET 1 OF 2 SHEETS STA. TO STA.

F.A.P. RTE.	SECTION	COUNTY	TOTAL SHEETS	SHEET NO.
311	2021-029-R5	COOK	42	3
CONTRACT NO. 62N78				
ILLINOIS FED. AID PROJECT				

1 REVISED SHEET 2/25/2022





**PAVEMENT MARKING LEGEND**

- ① THERMOPLASTIC PAVEMENT MARKING - LINE 4" SOLID WHITE
- ② THERMOPLASTIC PAVEMENT MARKING - LINE 6" SOLID WHITE
- ③ THERMOPLASTIC PAVEMENT MARKING - LINE 4" DOUBLE SOLID YELLOW
- ④ THERMOPLASTIC PAVEMENT MARKING - LINE 6" (6' SKIP - 2' DASH) WHITE
- ⑤ THERMOPLASTIC PAVEMENT MARKING - LINE 24" WHITE
- ⑥ THERMOPLASTIC PAVEMENT MARKING - LETTERS AND SYMBOLS (TYP)
- ⑦ THERMOPLASTIC PAVEMENT MARKING - LINE 4" SOLID WHITE 45° DIAGONAL 20' O.C.
- ⑧ THERMOPLASTIC PAVEMENT MARKING - LINE 12" SOLID YELLOW 45° DIAGONAL 20' O.C.
- ⑨ THERMOPLASTIC PAVEMENT MARKING - LINE 4" (30' SKIP - 10' DASH) WHITE
- ⑩ THERMOPLASTIC PAVEMENT MARKING - LINE 12" WHITE 3' O.C.
- ⑪ RAISED REFLECTIVE PAVEMENT MARKER

**ROADWAY LEGEND**

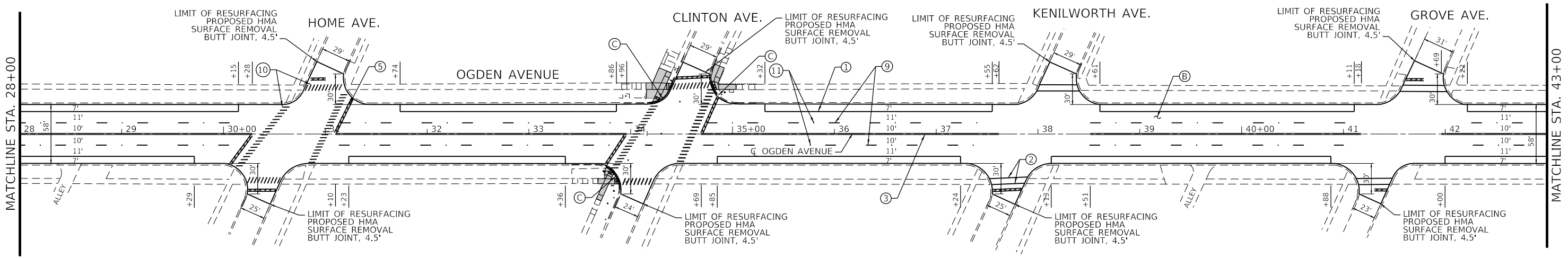
- (A) HOT-MIX ASPHALT SURFACE REMOVAL-BUTT JOINT
- (B) HOT-MIX ASPHALT SURFACE REMOVAL, 1 3/4" POLYMERIZED HOT-MIX ASPHALT SURFACE COURSE, MIX "E", IL-9.5, N70, 1 3/4"
- (C) PROP. CURB RAMP IMPROVEMENT, SEE DETAIL DESIGN ON SHEETS 15 - 21

**NOTES:**

1. THE QUANTITY FOR CLASS D PATCHES, 10" INCLUDED IS TO BE USED AT THE DIRECTION OF THE ENGINEER IN THE FIELD AFTER THE SURFACE HAS BEEN REMOVED.
2. THE QUANTITY FOR COMBINATION CONCRETE CURB AND GUTTER REMOVAL AND REPLACEMENT AND COMBINATION CURB AND GUTTER REMOVAL AND REPLACEMENT LESS THAN OR EQUAL TO 10 FEET INCLUDED IS TO BE USED AT THE DIRECTION OF THE ENGINEER IN THE FIELD EXCEPT AS NOTED ON THE PLANS AND ADA RAMP DETAILS.

**PLAN NOTES:**

ALL PAVEMENT MARKINGS INSTALLED ACCORDING TO IDOT'S D-1 DETAIL TC-13  
 ALL RAISED REFLECTIVE PAVEMENT MARKERS INSTALLED ACCORDING TO IDOT'S D1 DETAIL TC-11  
 ALL CROSSWALKS WILL BE 6 FEET WIDE



MODEL: Default  
 FILE: hdmr2\_pavementresurfacing01.hdr, US\_Centroid\_011\Documents\30681\_0003535\103169446.dwg, CADD\_BIM\62\_2109\62\_23\_CADD\_SheetRoadway\012821-SH.rvt, 01.dgn

**HDR**  
 HDR  
 9450 W. BRYN MAWR AVE.  
 ROSEMONT, IL 60018

USER NAME = ANAGY	DESIGNED - MM	REVISED - 2/17/2022
PLOT SCALE = 100.0008' / in.	DRAWN - HL	REVISED -
PLOT DATE = 10/1/2021	CHECKED - EN	REVISED -
	DATE - 12/10/2021	REVISED -

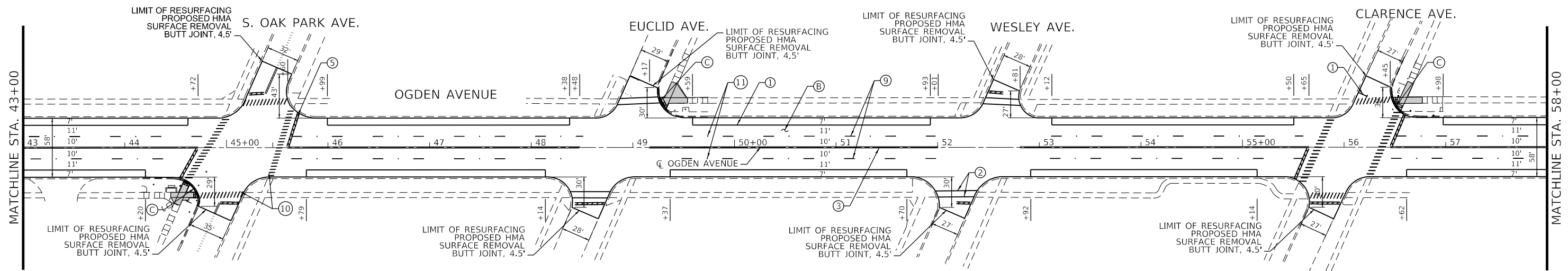
**STATE OF ILLINOIS  
 DEPARTMENT OF TRANSPORTATION**

**ROADWAY AND PAVEMENT MARKING PLANS  
 OGDEN AVE. - IL 43 (HARLEM AVE. TO 50TH AVE.)**

SCALE: 1"=50'    SHEET 1 OF 6 SHEETS    STA. 43+00    TO STA. 72+00

F.A.P. RTE. 311	SECTION 2021-029-R5	COUNTY COOK	TOTAL SHEETS 42	SHEET NO. 8
CONTRACT NO. 62N78				
ILLINOIS FED. AID PROJECT				

**1** REVISED SHEET 2/25/2022



**PAVEMENT MARKING LEGEND**

- ① THERMOPLASTIC PAVEMENT MARKING - LINE 4" SOLID WHITE
- ② THERMOPLASTIC PAVEMENT MARKING - LINE 6" SOLID WHITE
- ③ THERMOPLASTIC PAVEMENT MARKING - LINE 4" DOUBLE SOLID YELLOW
- ④ THERMOPLASTIC PAVEMENT MARKING - LINE 6" (6' SKIP - 2' DASH) WHITE
- ⑤ THERMOPLASTIC PAVEMENT MARKING - LINE 24" WHITE
- ⑥ THERMOPLASTIC PAVEMENT MARKING - LETTERS AND SYMBOLS (TYP)
- ⑦ THERMOPLASTIC PAVEMENT MARKING - LINE 4" SOLID WHITE 45° DIAGONAL
- ⑧ THERMOPLASTIC PAVEMENT MARKING - LINE 12" SOLID YELLOW 45° DIAGONAL 20' O.C.
- ⑨ THERMOPLASTIC PAVEMENT MARKING - LINE 4" (30' SKIP - 10' DASH) WHITE
- ⑩ THERMOPLASTIC PAVEMENT MARKING - LINE 12" WHITE 3' O.C.
- ⑪ RAISED REFLECTIVE PAVEMENT MARKER

**NOTES:**

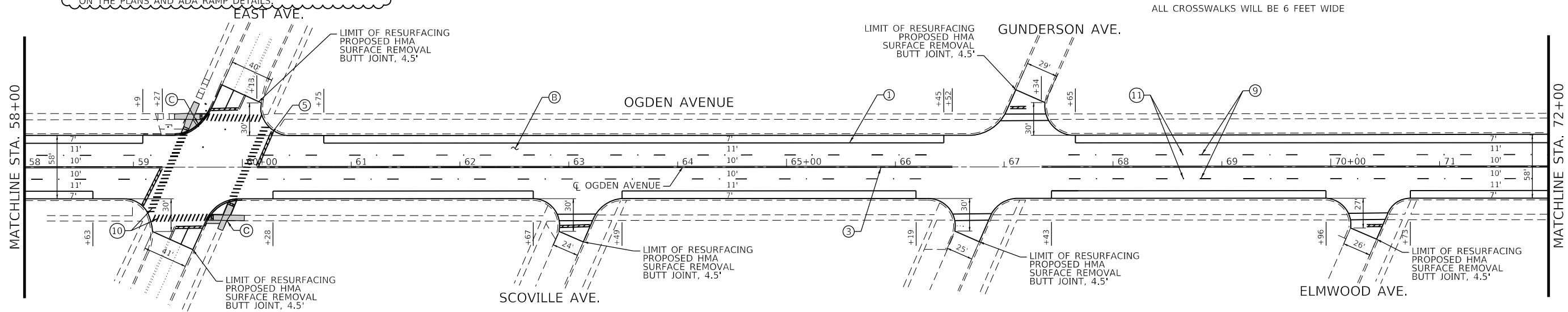
1. THE QUANTITY FOR CLASS D PATCHES, 10" INCLUDED IS TO BE USED AT THE DIRECTION OF THE ENGINEER IN THE FIELD AFTER THE SURFACE HAS BEEN REMOVED.
2. THE QUANTITY FOR COMBINATION CONCRETE CURB AND GUTTER REMOVAL AND REPLACEMENT AND COMBINATION CURB AND GUTTER REMOVAL AND REPLACEMENT LESS THAN OR EQUAL TO 10 FEET INCLUDED IS TO BE USED AT THE DIRECTION OF THE ENGINEER IN THE FIELD EXCEPT AS NOTED ON THE PLANS AND ADA RAMP DETAILS.

**ROADWAY LEGEND**

- Ⓐ HOT-MIX ASPHALT SURFACE REMOVAL-BUTT JOINT
- Ⓑ HOT-MIX ASPHALT SURFACE REMOVAL, 1 3/4" POLYMERIZED HOT-MIX ASPHALT SURFACE COURSE, MIX "E", IL-9.5, N70, 1 3/4"
- Ⓒ PROP. CURB RAMP IMPROVEMENT, SEE DETAIL DESIGN ON SHEETS 15 - 21

**PLAN NOTES:**

- ALL PAVEMENT MARKINGS INSTALLED ACCORDING TO IDOT'S D-1 DETAIL TC-13
- ALL RAISED REFLECTIVE PAVEMENT MARKERS INSTALLED ACCORDING TO IDOT'S D1 DETAIL TC-11
- ALL CROSSWALKS WILL BE 6 FEET WIDE



MODEL: Default  
 FILE: h:\mhc\p\10003535\103169446.dwg\_CADD\_BIM\6.2\_V10\6.2.3\_CADD\_SheetRoadway\1012821-Sht.dwg  
 10/11/2021 10:11:11 AM

**HDR**  
 HDR  
 9450 W. BRYN MAWR AVE.  
 ROSEMONT, IL 60018

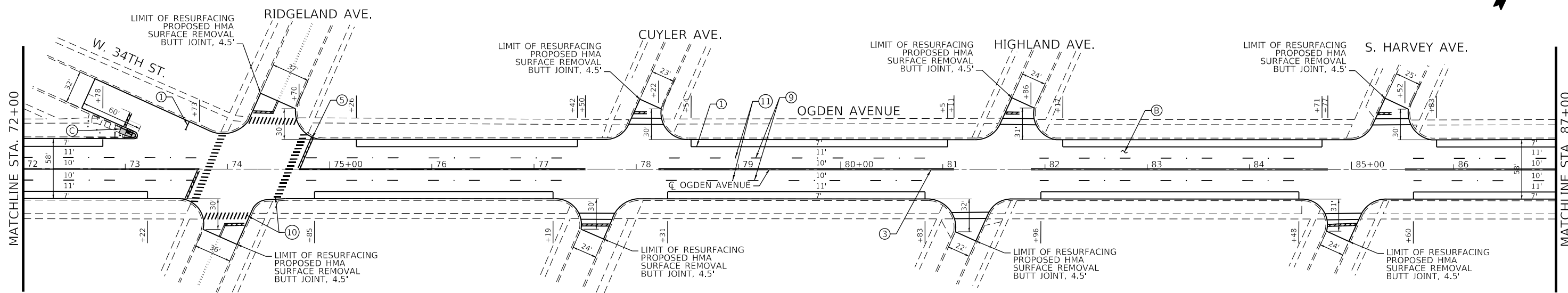
USER NAME = ANAGY	DESIGNED - MM	REVISED - 2/17/2022
PLOT SCALE = 100,0000' / in.	DRAWN - HL	REVISED -
PLOT DATE = 10/1/2021	CHECKED - EN	REVISED -
	DATE - 12/10/2021	REVISED -

**STATE OF ILLINOIS  
 DEPARTMENT OF TRANSPORTATION**

**ROADWAY AND PAVEMENT MARKING PLANS  
 OGDEN AVE. - IL 43 (HARLEM AVE. TO 50TH AVE.)**

SCALE: 1"=50'    SHEET 2 OF 6 SHEETS    STA. 43+00 TO STA. 72+00

REVISED SHEET 2/25/2022		F.A.P. RTE.	SECTION	COUNTY	TOTAL SHEETS	SHEET NO.
		311	2021-029-R5	COOK	42	9
						CONTRACT NO. 62N78
						ILLINOIS FED. AID PROJECT



**PAVEMENT MARKING LEGEND**

- ① THERMOPLASTIC PAVEMENT MARKING - LINE 4" SOLID WHITE
- ② THERMOPLASTIC PAVEMENT MARKING - LINE 6" SOLID WHITE
- ③ THERMOPLASTIC PAVEMENT MARKING - LINE 4" DOUBLE SOLID YELLOW
- ④ THERMOPLASTIC PAVEMENT MARKING - LINE 6" (6' SKIP - 2' DASH) WHITE
- ⑤ THERMOPLASTIC PAVEMENT MARKING - LINE 24" WHITE
- ⑥ THERMOPLASTIC PAVEMENT MARKING - LETTERS AND SYMBOLS (TYP)
- ⑦ THERMOPLASTIC PAVEMENT MARKING - LINE 4" SOLID WHITE 45° DIAGONAL
- ⑧ THERMOPLASTIC PAVEMENT MARKING - LINE 12" SOLID YELLOW 45° DIAGONAL 20' O.C.
- ⑨ THERMOPLASTIC PAVEMENT MARKING - LINE 4" (30' SKIP - 10' DASH) WHITE
- ⑩ THERMOPLASTIC PAVEMENT MARKING - LINE 12" WHITE 3' O.C.
- ⑪ RAISED REFLECTIVE PAVEMENT MARKER

**NOTES:**

1. THE QUANTITY FOR CLASS D PATCHES, 10" INCLUDED IS TO BE USED AT THE DIRECTION OF THE ENGINEER IN THE FIELD AFTER THE SURFACE HAS BEEN REMOVED.
2. THE QUANTITY FOR COMBINATION CONCRETE CURB AND GUTTER REMOVAL AND REPLACEMENT AND COMBINATION CURB AND GUTTER REMOVAL AND REPLACEMENT LESS THAN OR EQUAL TO 10 FEET INCLUDED IS TO BE USED AT THE DIRECTION OF THE ENGINEER IN THE FIELD EXCEPT AS NOTED ON THE PLANS AND ADA RAMP DETAILS.

**ROADWAY LEGEND**

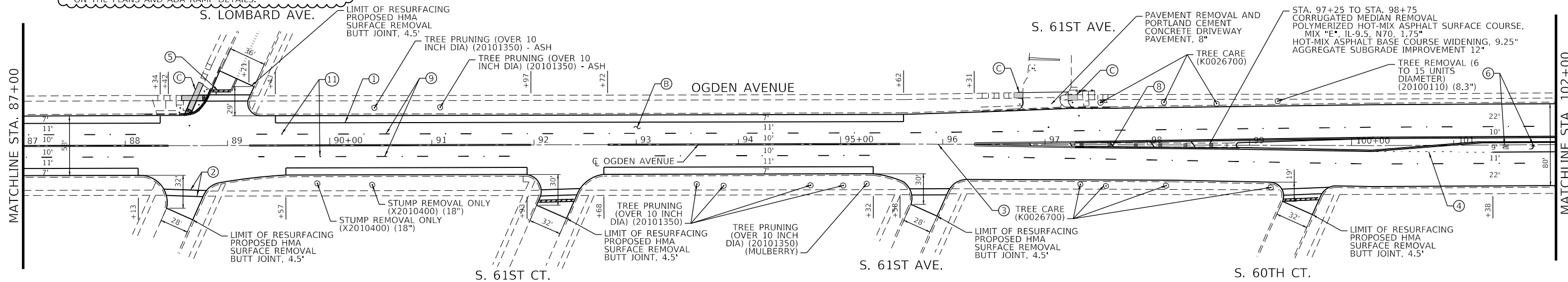
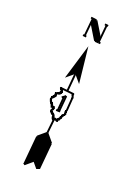
- Ⓐ HOT-MIX ASPHALT SURFACE REMOVAL-BUTT JOINT
- Ⓑ HOT-MIX ASPHALT SURFACE REMOVAL, 1 3/4" POLYMERIZED HOT-MIX ASPHALT SURFACE COURSE, MIX "E", IL-9.5, N70, 1 3/4"
- Ⓒ PROP. CURB IMPROVEMENT, SEE DETAIL DESIGN ON SHEETS 15 - 21

**PLAN NOTES:**

ALL PAVEMENT MARKINGS INSTALLED ACCORDING TO IDOT'S D-1 DETAIL TC-13

ALL RAISED REFLECTIVE PAVEMENT MARKERS INSTALLED ACCORDING TO IDOT'S D1 DETAIL TC-11

ALL CROSSWALKS WILL BE 6 FEET WIDE



REVISED SHEET 2/25/2022

MODEL: Default  
 FILE: h:\mhc\p\hondapdf\escen01\HDR\_US\_Centrac1\_01\Documents\30681\_00033535\103169446.dwg\_CADD\_BIM\62\_V1P\62.3\_CADD\_SheetRoadway\012821-ShtRcd\03.dwg

**HDR**  
 HDR  
 9450 W. BRYN MAWR AVE.  
 ROSEMONT, IL 60018

USER NAME = ANAGY	DESIGNED - MM	REVISED - 2/17/2022
PLOT SCALE = 100.0000' / in.	DRAWN - HL	REVISED -
PLOT DATE = 10/1/2021	CHECKED - EN	REVISED -
	DATE - 12/10/2021	REVISED -

**STATE OF ILLINOIS  
 DEPARTMENT OF TRANSPORTATION**

**ROADWAY AND PAVEMENT MARKING PLANS  
 OGDEN AVE. - IL 43 (HARLEM AVE. TO 50TH AVE.)**

SCALE: 1"=50' SHEET 3 OF 6 SHEETS STA. 72+00 TO STA. 102+00

F.A.P. RTE. 311	SECTION 2021-029-R5	COUNTY COOK	TOTAL SHEETS 42	SHEET NO. 10
CONTRACT NO. 62N78				
ILLINOIS FED. AID PROJECT				

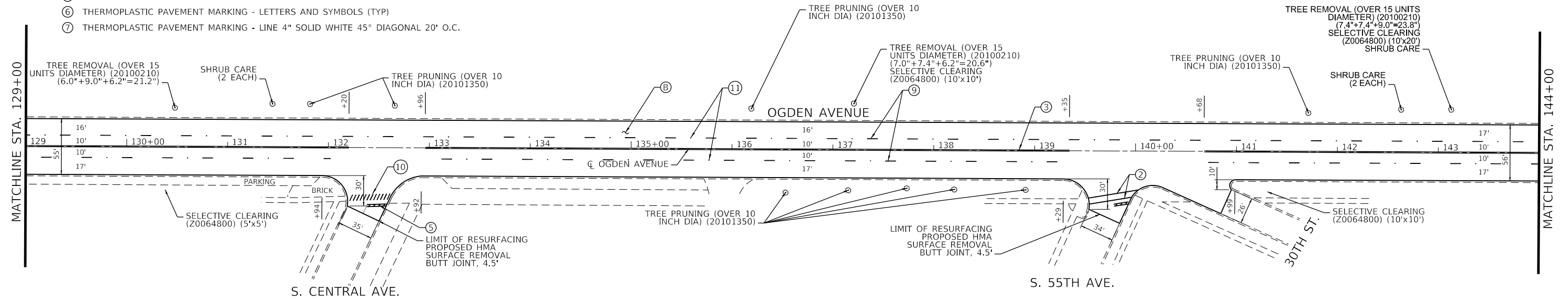
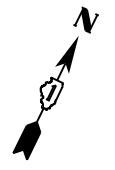


**PAVEMENT MARKING LEGEND**

- ① THERMOPLASTIC PAVEMENT MARKING - LINE 4" SOLID WHITE
- ② THERMOPLASTIC PAVEMENT MARKING - LINE 6" SOLID WHITE
- ③ THERMOPLASTIC PAVEMENT MARKING - LINE 4" DOUBLE SOLID YELLOW
- ④ THERMOPLASTIC PAVEMENT MARKING - LINE 6" (6' SKIP - 2' DASH) WHITE
- ⑤ THERMOPLASTIC PAVEMENT MARKING - LINE 24" WHITE
- ⑥ THERMOPLASTIC PAVEMENT MARKING - LETTERS AND SYMBOLS (TYP)
- ⑦ THERMOPLASTIC PAVEMENT MARKING - LINE 4" SOLID WHITE 45° DIAGONAL 20' O.C.
- ⑧ THERMOPLASTIC PAVEMENT MARKING - LINE 12" SOLID YELLOW 45° DIAGONAL 20' O.C.
- ⑨ THERMOPLASTIC PAVEMENT MARKING - LINE 4" (30' SKIP - 10' DASH) WHITE
- ⑩ THERMOPLASTIC PAVEMENT MARKING - LINE 12" WHITE 3' O.C.
- ⑪ RAISED REFLECTIVE PAVEMENT MARKER

**ROADWAY LEGEND**

- Ⓐ HOT-MIX ASPHALT SURFACE REMOVAL-BUTT JOINT
- Ⓑ HOT-MIX ASPHALT SURFACE REMOVAL, 1 3/4" POLYMERIZED HOT-MIX ASPHALT SURFACE COURSE, MIX "E", IL-9.5, N70, 1 3/4"
- Ⓒ PROP. CURB IMPROVEMENT, SEE DETAIL DESIGN ON SHEETS 15 - 21

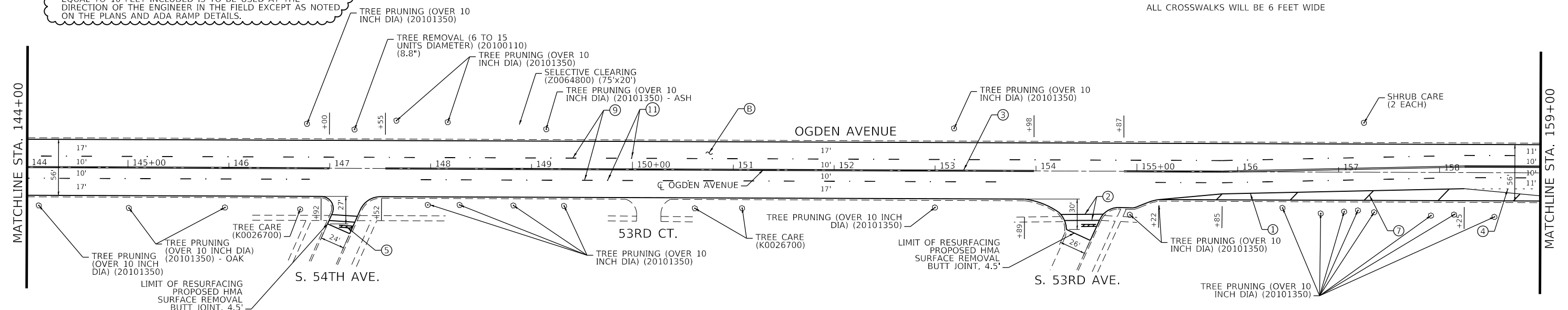


**NOTES:**

1. THE QUANTITY FOR CLASS D PATCHES, 10" INCLUDED IS TO BE USED AT THE DIRECTION OF THE ENGINEER IN THE FIELD AFTER THE SURFACE HAS BEEN REMOVED.
2. THE QUANTITY FOR COMBINATION CONCRETE CURB AND GUTTER REMOVAL AND REPLACEMENT AND COMBINATION CURB AND GUTTER REMOVAL AND REPLACEMENT LESS THAN OR EQUAL TO 10 FEET INCLUDED IS TO BE USED AT THE DIRECTION OF THE ENGINEER IN THE FIELD EXCEPT AS NOTED ON THE PLANS AND ADA RAMP DETAILS.

**PLAN NOTES:**

- ALL PAVEMENT MARKINGS INSTALLED ACCORDING TO IDOT'S D-1 DETAIL TC-13
- ALL RAISED REFLECTIVE PAVEMENT MARKERS INSTALLED ACCORDING TO IDOT'S D1 DETAIL TC-11
- ALL CROSSWALKS WILL BE 6 FEET WIDE



MODEL: Default  
 FILE: h:\mhc\p\hondahdresce001\HDR\_US\_Centrac\011\Documents\30681000335\103169446.cad\_CADD\_BIM\6.2\_VIP\6.2.3\_CADD\_SheetRoadway\0112821-SheetRdV5.dgn

**HDR**  
 HDR  
 9450 W. BRYN MAWR AVE.  
 ROSEMONT, IL 60018

USER NAME = ANAGY	DESIGNED - MM	REVISED - 2/17/2022
PLOT SCALE = 100.0000' / in.	DRAWN - HL	REVISED -
PLOT DATE = 10/1/2021	CHECKED - EN	REVISED -
	DATE - 12/10/2021	REVISED -

**STATE OF ILLINOIS  
 DEPARTMENT OF TRANSPORTATION**

**ROADWAY AND PAVEMENT MARKING PLANS  
 OGDEN AVE. - IL 43 (HARLEM AVE. TO 50TH AVE.)**

SCALE: 1"=50'    SHEET 5 OF 6 SHEETS    STA. TO STA.

F.A.P. RTE.	SECTION	COUNTY	TOTAL SHEETS	SHEET NO.
311	2021-029-R5	COOK	42	12
CONTRACT NO. 62N78				
ILLINOIS FED. AID PROJECT				

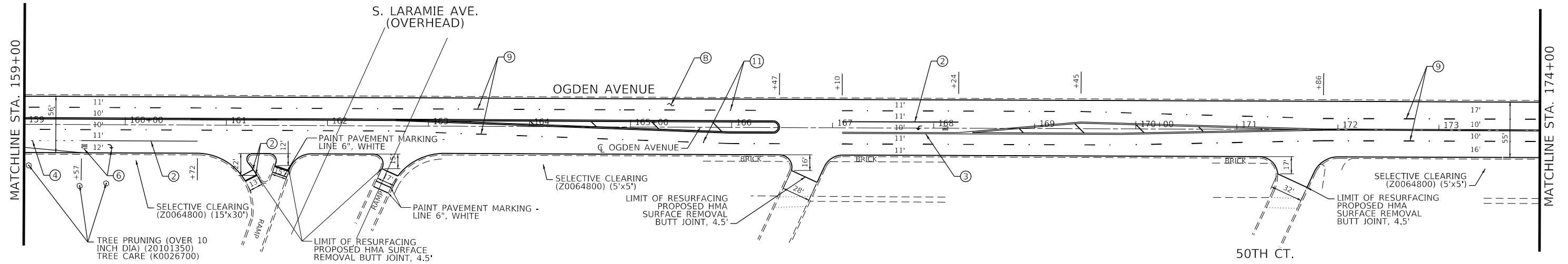
REVISION 1 REVISED SHEET 2/25/2022

**PAVEMENT MARKING LEGEND**

- ① THERMOPLASTIC PAVEMENT MARKING - LINE 4" SOLID WHITE
- ② THERMOPLASTIC PAVEMENT MARKING - LINE 6" SOLID WHITE
- ③ THERMOPLASTIC PAVEMENT MARKING - LINE 4" DOUBLE SOLID YELLOW
- ④ THERMOPLASTIC PAVEMENT MARKING - LINE 6" (6' SKIP - 2' DASH) WHITE
- ⑤ THERMOPLASTIC PAVEMENT MARKING - LINE 24" WHITE
- ⑥ THERMOPLASTIC PAVEMENT MARKING - LETTERS AND SYMBOLS (TYP)
- ⑦ THERMOPLASTIC PAVEMENT MARKING - LINE 4" SOLID WHITE 45° DIAGONAL 20' O.C.
- ⑧ THERMOPLASTIC PAVEMENT MARKING - LINE 12" SOLID YELLOW 45° DIAGONAL 20' O.C.
- ⑨ THERMOPLASTIC PAVEMENT MARKING - LINE 4" (30' SKIP - 10' DASH) WHITE
- ⑩ THERMOPLASTIC PAVEMENT MARKING - LINE 12" WHITE 3' O.C.
- ⑪ RAISED REFLECTIVE PAVEMENT MARKER

**ROADWAY LEGEND**

- Ⓐ HOT-MIX ASPHALT SURFACE REMOVAL-BUTT JOINT
- Ⓑ HOT-MIX ASPHALT SURFACE REMOVAL, 1 3/4" POLYMERIZED HOT-MIX ASPHALT SURFACE COURSE, MIX "E", IL-9.5, N70, 1 3/4"
- Ⓒ PROP. CURB RAMP IMPROVEMENT, SEE DETAIL DESIGN ON SHEETS 15 - 21
- Ⓓ CLASS D PAVEMENT PATCH



**NOTES:**

1. THE QUANTITY FOR CLASS D PATCHES, 10" INCLUDED IS TO BE USED AT THE DIRECTION OF THE ENGINEER IN THE FIELD AFTER THE SURFACE HAS BEEN REMOVED EXCEPT AS NOTED ON THE PLANS.

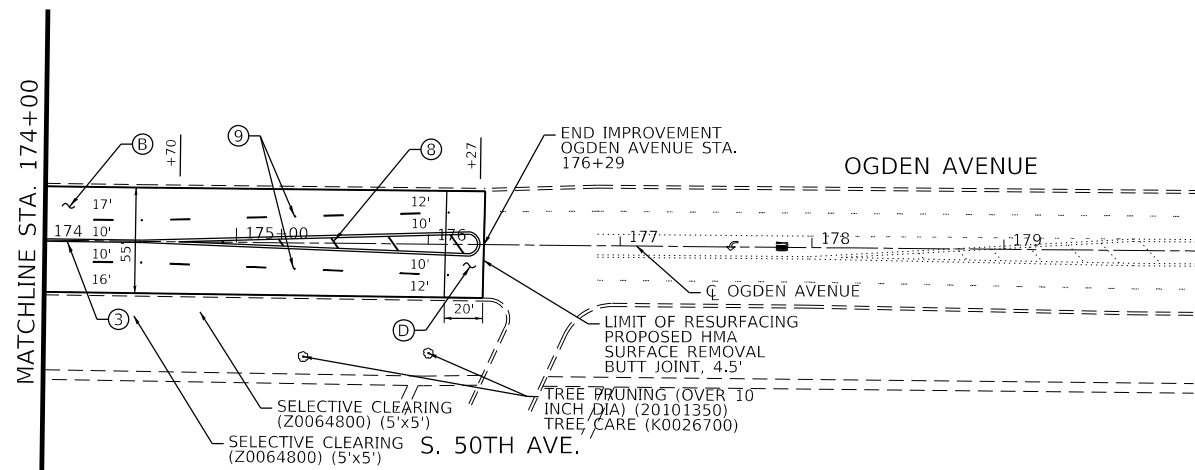
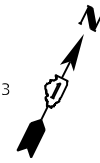
2. THE QUANTITY FOR COMBINATION CONCRETE CURB AND GUTTER REMOVAL AND REPLACEMENT AND COMBINATION CURB AND GUTTER REMOVAL AND REPLACEMENT LESS THAN OR EQUAL TO 10 FEET INCLUDED IS TO BE USED AT THE DIRECTION OF THE ENGINEER IN THE FIELD EXCEPT AS NOTED ON THE PLANS AND ADA RAMP DETAILS.

**PLAN NOTES:**

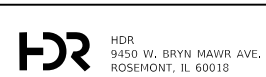
ALL PAVEMENT MARKINGS INSTALLED ACCORDING TO IDOT'S D-1 DETAIL TC-13

ALL RAISED REFLECTIVE PAVEMENT MARKERS INSTALLED ACCORDING TO IDOT'S D1 DETAIL TC-11

ALL CROSSWALKS WILL BE 6 FEET WIDE



MODEL: Default  
 FILE: \\hpdlc\pwworking\roscenro01\HDB\_US\_Centref\_01\Documents\3068100033535103169446\_CAD\_BIM\2\_WIP\6.2.3\_CADD\_Sheet\Roadway\0112821-5hr-rd-06.dwg



USER NAME = ANAGY	DESIGNED - MM	REVISED - 2/17/2022
PLOT SCALE = 100.0434' / in.	DRAWN - HL	REVISED -
PLOT DATE = 10/11/2021	CHECKED - EN	REVISED -
	DATE - 12/10/2021	REVISED -

**STATE OF ILLINOIS  
DEPARTMENT OF TRANSPORTATION**

**ROADWAY AND PAVEMENT MARKING PLANS  
OGDEN AVE. - IL 43 (HARLEM AVE. TO 50TH AVE.)**

SCALE: 1"=50'    SHEET 6 OF 6 SHEETS    STA. 159+00 TO STA. 179+00

F.A.P. RTE. 311	SECTION 2021-029-R5	COUNTY COOK	TOTAL SHEETS 42	SHEET NO. 13
CONTRACT NO. 62N78				
ILLINOIS / FED. AID PROJECT				

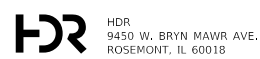
REVISED SHEET 2/25/2022



**SCHEDULE OF QUANTITIES – CURB RAMPS**

LOCATION			EARTH EXCAVATION 20200100	TOPSOIL FURNISH AND PLACE, 4" 21101615	SODDING, SALT TOLERANT 25200110	SUPPLEMENTAL WATERING 25200200	PROTECTIVE COAT 42001300	PORTLAND CEMENT CONCRETE DRIVEWAY PAVEMENT, 8 INCH 42300400	PORTLAND CEMENT CONCRETE SIDEWALK 5 INCH 42400200	DETECTABLE WARNINGS 42400800	DRIVEWAY PAVEMENT REMOVAL 44000200	SIDEWALK REMOVAL 44000600	CLASS D PATCHES, TYPE I, 10 INCH 44201761	CLASS D PATCHES, TYPE II, 10 INCH 44201765	COMBINATION CONCRETE CURB AND GUTTER REMOVAL AND REPLACEMENT Z0004562	REMOVE AND REINSTALL BRICK PAVERS X0327611
			CU YD	SQ YD	SQ YD	UNIT	SQ YD	SQ YD	SQ FT	SQ FT	SQ YD	SQ FT	SQ YD	SQ YD	FOOT	SQ FT
OGDEN AVE	CLINTON AVE	SW	3.0	15	15	0.2	98	0	253	30	0	254	0	6	27	0
OGDEN AVE	CLINTON AVE	NW	3.0	8	8	0.1	143	0	511	22	0	511	0	8	33	0
OGDEN AVE	CLINTON AVE	NE	2.5	0	0	0.0	82	0	273	16	0	273	5	0	20	41
OGDEN AVE	OAK PARK AVE	SW	3.0	10	10	0.2	123	0	286	22	0	286	0	8	35	37
OGDEN AVE	EUCLID AVE	NE	2.5	10	10	0.1	105	0	360	21	0	360	0	6	25	0
OGDEN AVE	CLARENCE AVE	NE	2.5	11	11	0.2	106	0	295	24	0	296	0	7	28	0
OGDEN AVE	EAST AVE	NW	3.0	9	9	0.1	146	0	329	20	0	324	0	10	42	0
OGDEN AVE	EAST AVE	SE	1.5	13	13	0.2	155	0	342	20	0	309	0	10	45	10
OGDEN AVE	34THST	NW	1.5	1	1	0.0	84	0	76	12	0	77	0	7	29	0
OGDEN AVE	LOMBARD AVE	NW	3.0	10	10	0.2	139	0	274	30	0	259	0	10	42	12
OGDEN AVE	61ST AVE	NW	1.5	2	2	0.0	92	86	47	10	76	43	0	0	0	0
OGDEN AVE	61ST AVE	NE	1.5	0	0	0.0	6	0	49	10	0	87	0	0	0	21
OGDEN AVE	59TH AVE	SW	1.5	0	0	0.0	136	0	265	30	0	259	0	10	41	37
<b>TOTAL</b>			<b>30.0</b>	<b>90</b>	<b>90</b>	<b>1.4</b>	<b>1415</b>	<b>86</b>	<b>3361</b>	<b>267</b>	<b>76</b>	<b>3338</b>	<b>5</b>	<b>82</b>	<b>367</b>	<b>158</b>

MODEL: J0 MODEL  
FILE NAME: p:\projects\housesc01\HDR\_US\_Centrol\_01\Documents\3068\_10003535\103169416\_0\_CAD\_BIM\6.2\_VIP\6.2.3\_CADD\_SheetRoadway\0112821-SH-Schedule01.dgn



USER NAME = ANAGY	DESIGNED - MM	REVISED - 2/17/2022
PLOT SCALE = 100.0000' / in.	CHECKED - EN	REVISED -
PLOT DATE = 10/1/2021	DATE - 12/10/2021	REVISED -

**STATE OF ILLINOIS  
DEPARTMENT OF TRANSPORTATION**

**SCHEDULE OF QUANTITIES FOR CURB RAMPS  
OGDEN AVE. – IL 43 (HARLEM AVE. TO 50TH AVE.)**

SCALE: NTS SHEET OF SHEETS STA. TO STA.

F.A.P. RTE. 311	SECTION 2021-029-R5	COUNTY COOK	TOTAL SHEETS 42	SHEET NO. 14
CONTRACT NO. 62N78				
ILLINOIS FED. AID PROJECT				

**1** REVISED SHEET 2/25/2022