

STATE OF ILLINOIS  
 DEPARTMENT OF TRANSPORTATION  
**PROPOSED  
 HIGHWAY PLANS**

FAU RTE.	SECTION	COUNTY	TOTAL SHEETS	SHEET NO.
6385	20-00182-03-RS	MCLEAN	20	1

ILLINOIS CONTRACT NO. 91608

**INDEX OF SHEETS**

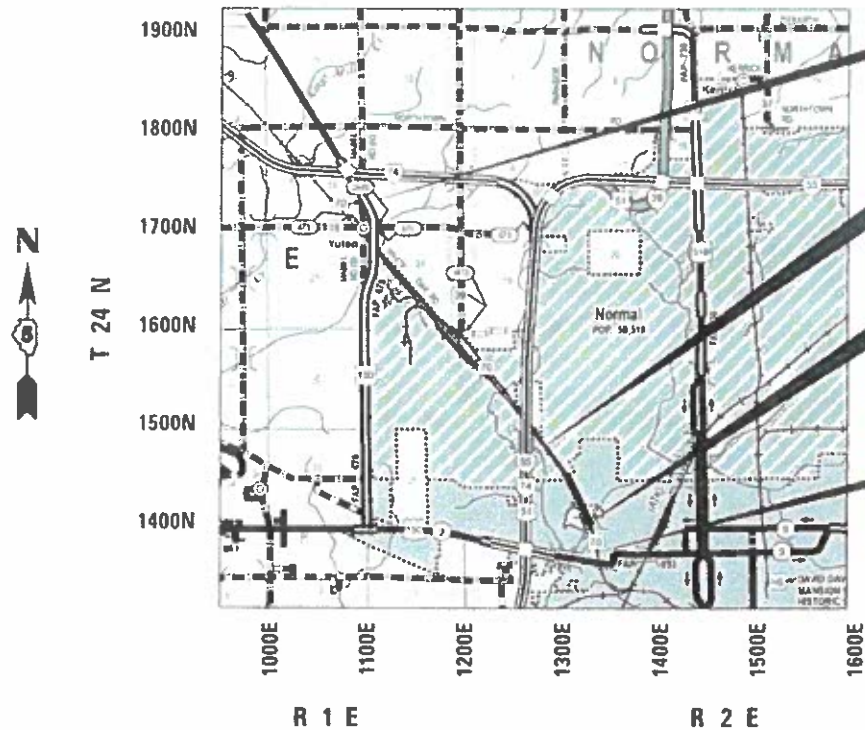
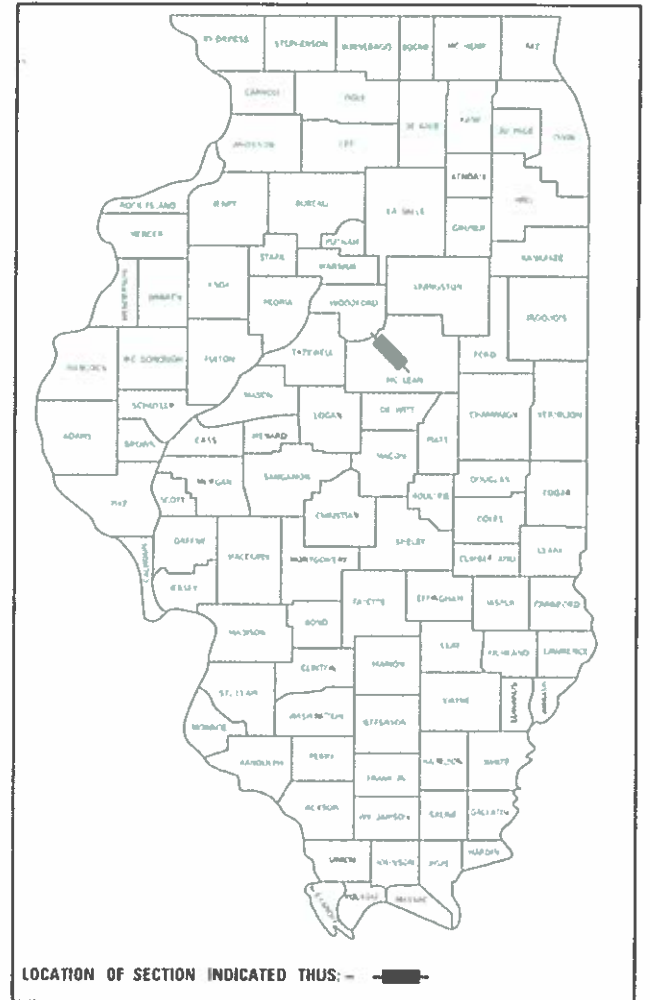
- 1 COVER SHEET
- 2 GENERAL NOTES
- 3 SUMMARY OF QUANTITIES
- 4 SCHEDULE OF QUANTITIES
- 5-8 TYPICAL CROSS SECTIONS
- 9-12 SPECIAL INTERSECTION DETAILS
- 13-14 LOCUST ST INTERSECTION DETAILS
- 15 COMMERCIAL ENTRANCE DETAILS
- 16-19 PAVEMENT MARKING PLANS
- 20 MISCELLANEOUS DETAILS

**FUNCTIONAL CLASSIFICATION  
 MINOR ARTERIAL**

STATION	ADT (2020)
835 + 43 TO 1050 + 30	4,450
1050 + 30 TO 1066 + 64	2,400
PV = 88% SU = 7% MU = 5%	

**FAU ROUTE 6385  
 SECTION 20-00182-03-RS  
 PROJECT WXVB(329)  
 RESURFACE  
 MCLEAN COUNTY  
 WHITE OAK ROAD (CH 70)  
 FUNDING: STU & MATCHING**

C-95-005-22

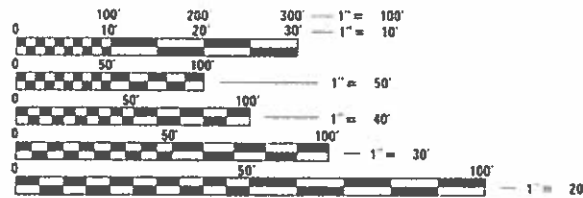


**SEC 20-00182-03-RS  
 END IMPROVEMENT  
 STA 1066 + 64  
 (US ROUTE 150 INTERSECTION)**

**RAILROAD CROSSING OMISSION  
 STA 902 + 01 TO STA 902 + 10  
 (9')**

**BRIDGE OMISSION  
 SN 057-5306  
 STA 850 + 83 TO STA 853 + 12  
 (229')**

**SEC 20-00182-03-RS  
 BEGIN IMPROVEMENT  
 STA 835 + 43  
 (LOCUST ST. INTERSECTION)**

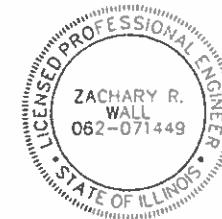


FULL SIZE PLANS HAVE BEEN PREPARED USING STANDARD ENGINEERING SCALES. REDUCED SIZED PLANS WILL NOT CONFORM TO STANDARD SCALES. IN MAKING MEASUREMENTS ON REDUCED PLANS, THE ABOVE SCALES MAY BE USED.

J.U.L.I.E.  
 JOINT UTILITY LOCATION INFORMATION FOR EXCAVATION  
 1-800-892-0123  
 OR 811

APPROXIMATE SCALE: 0 1 MILE

GROSS LENGTH = 23,121 FT. = 4.379 MILE  
 NET LENGTH = 22,863 FT. = 4.334 MILE



12/07/21  
 DATE

ZACHARY R. WALL, P.E.  
 NO. 062-071449  
 EXPIRATION DATE 02/28/22

STATE OF ILLINOIS  
 DEPARTMENT OF TRANSPORTATION  
 DIVISION OF HIGHWAY

APPROVED DECEMBER 9 20 21  
  
 MCLEAN CO. HIGHWAY DEPT. COUNTY ENGINEER

PASSED DECEMBER 21 20 21  
  
 DISTRICT 5 ENGINEER OF LOCAL ROADS & STREETS  
 RELEASING FOR BID  
 BASED ON LIMITED  
 REVIEW December 21, 20 21  
  
 REGION 3 ENGINEER

**PRINTED BY THE AUTHORITY  
 OF THE STATE OF ILLINOIS**

## GENERAL NOTES

- MICROSTATION AND GEOPAK FILES OF THIS PROJECT WILL BE MADE AVAILABLE TO THE CONTRACTOR AFTER CONTRACT AWARD. IF THERE IS A CONFLICT BETWEEN THE ELECTRONIC FILES AND THE PRINTED CONTRACT PLAN AND DOCUMENTS, THE PRINTED CONTRACT PLANS AND DOCUMENTS SHALL TAKE PRECEDENCE OVER THE ELECTRONIC FILES. THE CONTRACTOR SHALL ACCEPT ALL RISK ASSOCIATED WITH USING THE ELECTRONIC FILES AND SHALL HOLD THE DEPARTMENT HARMLESS FOR ANY ERRORS OR OMISSIONS IN THE ELECTRONIC FILES AND THE DATA CONTAINED THEREIN. ERRORS OR DELAYS RESULTING FROM THE USE OF THE ELECTRONIC FILES BY THE CONTRACTOR SHALL NOT RESULT IN AN EXTENSION OF TIME FOR ANY INTERIM OR FINAL COMPLETION DATE OR SHALL NOT BE CONSIDERED CAUSE FOR ADDITIONAL COMPENSATION. THE CONTRACTOR SHALL NOT USE, SHARE, OR DISTRIBUTE THESE ELECTRONIC FILES EXCEPT FOR THE PURPOSE OF CONSTRUCTING THIS CONTRACT. ANY CLAIMS BY THIRD PARTIES DUE TO USE OR ERRORS SHALL BE THE SOLE RESPONSIBILITY OF THE CONTRACTOR. THE CONTRACTOR SHALL INCLUDE THIS DISCLAIMER WITH THE TRANSFER OF THESE ELECTRONIC FILES TO ANY OTHER PARTIES AND SHALL INCLUDE APPROPRIATE LANGUAGE BINDING THEM TO SIMILAR RESPONSIBILITIES.
- THE EXISTING TOPOGRAPHIC INFORMATION FOR THIS PROJECT IS BASED ON A TOPOGRAPHIC SURVEY PREPARED BY THE COUNTY. THE CONTRACTOR IS RESPONSIBLE FOR VERIFYING THE TOPOGRAPHIC INFORMATION INDICATED ON THE DRAWINGS AND SHALL DETERMINE THE EXACT LOCATION AND ELEVATION OF ALL EXISTING DATA, ABOVE OR BELOW GROUND, SHOWN OR NOT SHOWN, PRIOR TO CONSTRUCTION. DISCREPANCIES IN EXISTING TOPOGRAPHIC DATA SHALL BE REPORTED TO THE ENGINEER IMMEDIATELY FOR REVIEW. COSTS TO VERIFY EXISTING TOPOGRAPHIC INFORMATION SHALL BE CONSIDERED INCIDENTAL TO THE CONTRACT.
- A FULL DEPTH SAW CUT SHALL BE PROVIDED AT ALL REMOVAL LIMITS. THIS WORK SHALL BE INCLUDED IN THE COST OF REMOVAL ITEMS.
- FOR STABILIZATION, ALL TYPE III BARRICADES SHALL REQUIRE A MINIMUM OF EIGHT SAND BAGS PER BARRICADE.
- ALL ELEVATIONS SHOWN IN THE PLANS ARE BASED ON NORTH AMERICAN DATUM OF 1983 (NAD83) AND STATE PLANE COORDINATES, ILLINOIS EAST ZONE.
- THE CONTRACTOR SHALL BE RESPONSIBLE FOR REPAIRS TO ANY UTILITY LINES AND EXISITING IMPROVEMENTS TO REMAIN THAT ARE DAMAGED AS A RESULT OF THE WORK.
- THE COUNTY RESERVES THE RIGHT TO REDUCE ANY QUANTITY OR DELETE ANY PAY ITEMS FROM THIS CONTRACT. NO ADDITIONAL COMPENSATION WILL BE ALLOWED.
- ALL TEMPORARY PAVEMENT MARKINGS & STRIPING WILL BE DONE BY OTHERS (MCLEAN COUNTY), EXCEPT FOR THE INTERSECTIONS OF MARTIN LUTHER KING JR. DRIVE (HEREIN REFERRED TO AS MLK DRIVE) AND COLLEGE AVENUE. THE CONTRACTOR SHALL BE RESPONSIBLE FOR SHORT TERM PAVEMENT MARKING & REMOVAL AT THE MLK & COLLEGE AVENUE INTERSECTIONS.
- ALL GENERATED MATERIAL FROM THE SIDEWALK AND CURB & GUTTER WORK SHALL REMAIN ON-SITE, WITHIN THE PROJECT LIMITS.

## STATE STANDARD DETAILS

000001-08	STANDARD SYMBOLS, ABBREVIATIONS, AND PATTERNS
001006	DECIMAL OF AN INCH AND OF A FOOT
424001-11	PERPENDICULAR CURB RAMPS FOR SIDEWALKS
442201-03	CLASS C AND D PATCHES
606001-08	CONCRETE CURB TYPE B AND COMBINATION CONCRETE CURB AND GUTTER
630301-09	SHOULDER WIDENING FOR TYPE 1 (SPECIAL) GUARDRAIL TERMINALS
701001-02	OFF-RD OPERATIONS, 2L, 2W, MORE THAN 15' (4.5 m) AWAY
701006-05	OFF-RD OPERATIONS, 2L, 2W, 15' TO 24" FROM PAVEMENT EDGE
701011-04	OFF-RD MOVING OPERATIONS, 2L, 2W, DAY ONLY
701201-05	LANE CLOSURE, 2L, 2W, DAY ONLY, FOR SPEEDS ≥ 45 MPH
701301-04	LANE CLOSURE, 2L, 2W, SHORT TIME OPERATIONS
701306-04	LANE CLOSURE, 2L, 2W, SLOW MOVING OPERATIONS DAY ONLY, FOR SPEEDS ≥ 45 MPH
701801-06	SIDEWALK, CORNER OR CROSSWALK CLOSURE
701901-08	TRAFFIC CONTROL DEVICES
781001-04	TYPICAL APPLICATIONS RAISED REFLECTIVE PAVEMENT MARKERS
BLR 18-6	TRAFFIC CONTROL DEVICES - DAY LABOR MAINTENANCE
BLR 22-7	TYPICAL APPLICATIONS OF TRAFFIC CONTROL DEVICES FOR CONSTRUCTION ON RURAL LOCAL HIGHWAYS

THE FOLLOWING MIXTURE REQUIREMENTS ARE APPLICABLE FOR THIS PROJECT:

Location(s):	CH 70	Side Roads/Ents	CH 70	Various
Mixture Use(s):	HMA Binder	Incidental HMA	HMA Surface	Class D Patches
PG Grade:	PG 64-22	PG 64-22	PG 64-22	PG 64-22
Design Air Voids:	4.0% @ N50	4.0% @ N50	4.0% @ N70	4.0% @ N50
Mixture Composition:	IL-9.5 FG	IL 9.5	IL 9.5	IL 19.0
Friction Aggregate:	N/A	Mixture C	Mixture D	N/A
Mixture Weight:	112	112	112	112
Quality Management Program:	QC/QA	QC/QA	QC/QA	QC/QA
Sublot Size:	N/A	N/A	N/A	N/A
Material Transfer Device (Required?)	No	No	No	No

MODEL: General Notes  
FILE NAME: X:\CountyRoads\CH 70\20-00182-03-RS - White Oak Road - 2022\Design\DWG\Plan Sheets\20-00182-03-RS\_White Oak General Notes and Schedules.dgn

USER NAME = collin.frantz	DESIGNED -	REVISED -
	DRAWN -	REVISED -
PLOT SCALE = 0.08333317 ' / in.	CHECKED - ZRW	REVISED -
PLOT DATE = 1/26/2022	DATE - 12/06/2021	REVISED -

**STATE OF ILLINOIS  
DEPARTMENT OF TRANSPORTATION**

<b>GENERAL NOTES</b>			
SCALE:	SHEET 1	OF 1	SHEETS
STA.	TO STA.		

F.A.U. RTE.	SECTION	COUNTY	TOTAL SHEETS	SHEET NO.
6385	20-00182-03-RS	MCLEAN	20	2
CONTRACT NO. 91608				
		ILLINOIS	FED. AID PROJECT	

MODEL: 500  
 FILE NAME: X:\CountyRoutes\CH 7020-00132-03-RS - White Oak Road - 2022\Drawings\Plan Sheets\20-00182-03-RS White Oak\_SDD.dgn

CODE NO.	ITEM	UNIT	TOTAL QUANTITY
40600290	BITUMINOUS MATERIALS (TACK COAT)	POUND	47,906
40600370	LONGITUDINAL JOINT SEALANT	FOOT	71,500
40600990	TEMPORARY RAMP	SQ YD	222
40602965	HOT-MIX ASPHALT BINDER COURSE, IL-9.5FG, N50	TON	4,675
40604062	HOT-MIX ASPHALT SURFACE COURSE, IL-9.5, MIX "D", N70	TON	5,880
40800050	INCIDENTAL HOT-MIX ASPHALT SURFACING	TON	475
42400100	PORTLAND CEMENT CONCRETE SIDEWALK 4 INCH	SQ FT	420
42400800	DETECTABLE WARNINGS	SQ FT	20
44000155	HOT-MIX ASPHALT SURFACE REMOVAL, 1 1/2"	SQ YD	5,650
44000157	HOT-MIX ASPHALT SURFACE REMOVAL, 2"	SQ YD	65,999
44000500	COMBINATION CURB AND GUTTER REMOVAL	FOOT	225
44000600	SIDEWALK REMOVAL	SQ FT	455
44201757	CLASS D PATCHES, TYPE III, 9 INCH	SQ YD	25
44201863	CLASS D PATCHES, TYPE II, 18 INCH	SQ YD	700

CODE NO.	ITEM	UNIT	TOTAL QUANTITY
48102100	AGGREGATE WEDGE SHOULDER, TYPE B	TON	3,839
* 56109210	WATER VALVES TO BE ADJUSTED	EACH	2
60255500	MANHOLES TO BE ADJUSTED	EACH	2
60604400	COMBINATION CONCRETE CURB AND GUTTER, TYPE B-6.18	FOOT	70
60609800	COMBINATION CONCRETE CURB AND GUTTER, TYPE M-6.18	FOOT	290
63100167	TRAFFIC BARRIER TERMINAL, TYPE I (SPECIAL) TANGENT	EACH	4
67100100	MOBILIZATION	L SUM	1
70300100	SHORT TERM PAVEMENT MARKING	FOOT	2,776
70300150	SHORT TERM PAVEMENT MARKING REMOVAL	SQ FT	1,512
70306100	TEMPORARY PAVEMENT MARKING LETTERS AND SYMBOLS - TYPE III TAPE	SQ FT	219
70306210	TEMPORARY PAVEMENT MARKING - LINE 24"- TYPE III TAPE	FOOT	184
Δ 78000100	THERMOPLASTIC PAVEMENT MARKING - LETTERS AND SYMBOLS	SQ FT	312
Δ 78000300	THERMOPLASTIC PAVEMENT MARKING - LINE 5"	FOOT	17,680
Δ 78000500	THERMOPLASTIC PAVEMENT MARKING - LINE 8"	FOOT	2,625

Δ SPECIALTY ITEMS  
 \* SPECIAL PROVISION

CODE NO.	ITEM	UNIT	TOTAL QUANTITY
Δ 78000600	THERMOPLASTIC PAVEMENT MARKING - LINE 12"	FOOT	911
Δ 78000650	THERMOPLASTIC PAVEMENT MARKING - LINE 24"	FOOT	209
Δ 78001120	PAINT PAVEMENT MARKING - LINE 5"	FOOT	70,236
Δ 78011030	GROOVING FOR RECESSED PAVEMENT MARKING 6"	FOOT	17,680
Δ 78011045	GROOVING FOR RECESSED PAVEMENT MARKING 9"	FOOT	2,625
Δ 78011065	GROOVING FOR RECESSED PAVEMENT MARKING 13"	FOOT	911
Δ 78011125	GROOVING FOR RECESSED PAVEMENT MARKING 25"	FOOT	209
Δ 78100100	RAISED REFLECTIVE PAVEMENT MARKER	EACH	446
78300200	RAISED REFLECTIVE PAVEMENT MARKER REMOVAL	EACH	240
* X4402805	ISLAND REMOVAL	SQ FT	181
* X6024503	INLETS TO BE ADJUSTED WITH NEW FRAME AND GRATE (SPECIAL)	EACH	2
Δ X6330735	STEEL PLATE BEAM GUARDRAIL ADJUSTMENT	FOOT	300
* X7010216	TRAFFIC CONTROL AND PROTECTION, (SPECIAL)	L SUM	1
* Z0013798	CONSTRUCTION LAYOUT	L SUM	1
* Z0055300	RUMBLE STRIP	EACH	8

USER NAME = zachary.wall	DESIGNED -	REVISED -
DRAWN - CCF	CHECKED - LDH	DATE - 12/06/2021
PLOT SCALE = 19.99996000' / in.		
PLOT DATE = 12/9/2021		

**STATE OF ILLINOIS**  
**DEPARTMENT OF TRANSPORTATION**

**SUMMARY OF QUANTITIES**

SCALE: SHEET 1 OF 1 SHEETS STA. TO STA.

F.A.U. RTE. 6385	SECTION 20-00182-03-RS	COUNTY MCLEAN	TOTAL SHEETS 20	SHEET NO. 3
CONTRACT NO. 91608				
ILLINOIS FED. AID PROJECT				

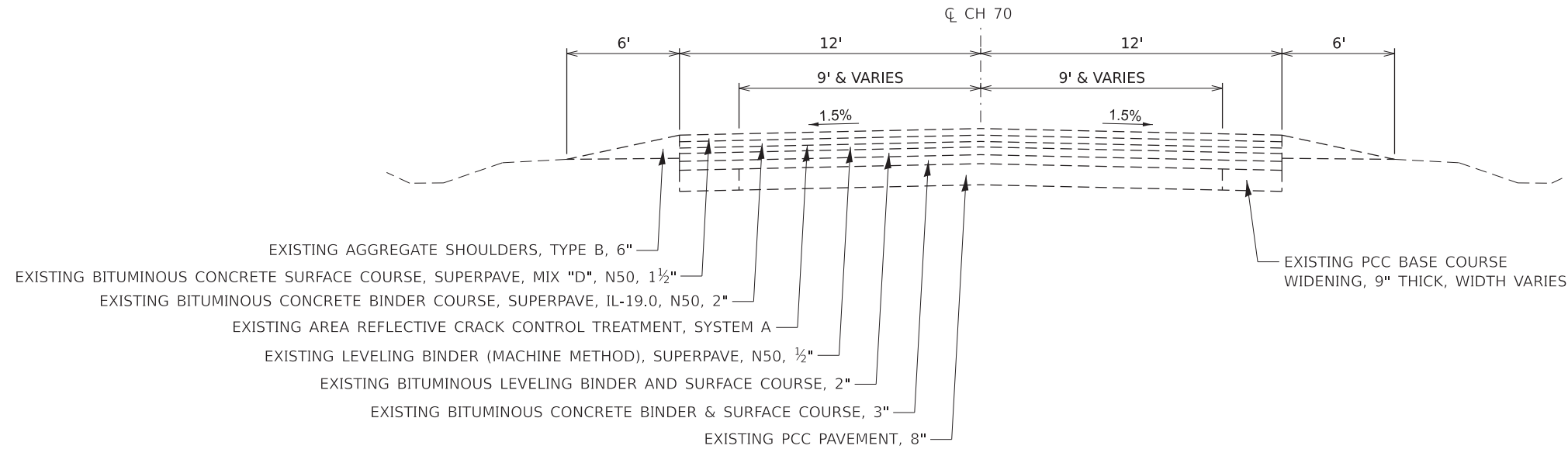




## EXISTING TYPICAL CROSS SECTION

SEC. 20-00182-03-RS  
 WHITE OAK RD (C.H. 70)  
 STA. 835+43 TO STA. 850+83  
 STA. 853+12 TO STA. 868+69  
 STA. 885+78 TO STA. 902+01  
 STA. 902+10 TO STA. 916+55  
 STA. 919+87 TO STA. 932+70  
 STA. 952+08 TO STA. 1040+81  
 STA. 1042+66 TO STA. 1051+81  
 (NOT TO SCALE)

STA. 850+83 TO STA. 853+12	(BRIDGE OMISSION, 057-5306)
STA. 868+69 TO STA. 885+78	(MLK INTERSECTION, SEE SHEETS 16-17)
STA. 902+01 TO STA. 902+10	(RAILROAD CROSSING OMISSION)
STA. 932+70 TO STA. 952+08	(COLLEGE AVE INTERSECTION, SEE SHEETS 18-19)



## PROPOSED TYPICAL CROSS SECTION

SEC. 20-00182-03-RS  
 WHITE OAK RD (C.H. 70)  
 STA. 835+43 TO STA. 850+83  
 STA. 853+12 TO STA. 868+69  
 STA. 885+78 TO STA. 902+01  
 STA. 902+10 TO STA. 916+55  
 STA. 919+87 TO STA. 932+70  
 STA. 952+08 TO STA. 1040+81  
 STA. 1042+66 TO STA. 1051+81  
 (NOT TO SCALE)

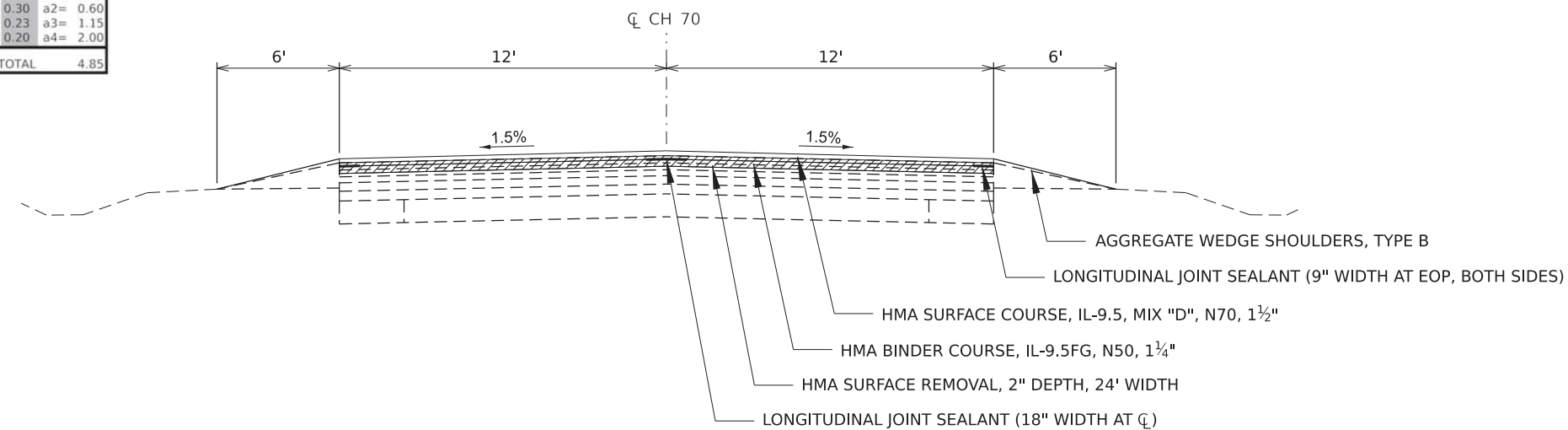
### NOTES FOR HMA REMOVAL AND PAVING AT INTERSECTIONS

STA. 868+69 TO STA. 885+78 (MLK INTERSECTION)  
 STA. 932+70 TO STA. 952+08 (COLLEGE AVE INTERSECTION)

HMA SURFACE REMOVAL, 2" DEPTH ON MAINLINE OF ROAD. WIDTH IS 24' AND VARIES. REPLACE WITH ¾" HMA BINDER COURSE AND 1½" HMA SURFACE COURSE.

SEE SHEET 4 FOR SCHEDULE OF LJS QUANTITIES

WHITE OAK ROAD (CH 70) - 20-00182-03-RS	
STA. 835+43 TO STA. 1050+31	
STRUCTURAL DESIGN DATA 80,000#	
CLASS II ROAD DESIGN PERIOD 20 YEARS	
CURRENT A.D.T.	4450
STRUCTURAL DESIGN TRAFFIC:	5430      YEAR: 2041
PERCENT OF DESIGN TRAFFIC IN DESIGN LANE:	
P.C. 88%	S.U. 7%
M.U. 5%	
P.C. 4778	S.U. 380
M.U. 271	
MINIMUM SOIL SUPPORT:	IBR= 3.0
TRAFFIC FACTOR (T.F.)=	1.48
STRUCTURAL NUMBER (D <sub>t</sub> )=	4.40
PAVEMENT STRUCTURE MATERIALS:	
SURFACE: PROPOSED HMA PAVEMENT	2.75 @ 0.40 a1= 1.10
BASE: EXISTING HMA PAVEMENT	2 @ 0.30 a2= 0.60
BASE: EXISTING HMA PAVEMENT	5 @ 0.23 a3= 1.15
SUBBASE: EXISTING CONCRETE BASE/PAVEMENT	10 @ 0.20 a4= 2.00
PROPOSED D <sub>t</sub> TOTAL 4.85	



MODEL: X-Sections.dgn  
 FILE NAME: X:\CountyRoads\CH 70\20-00182-03-RS - White Oak Road - 2022\Design\DCM\Plan\_Sheets\20-00182-03-RS\_White\_Oak\_Typ\_X-Sections.dgn

USER NAME = zachary.wall	DESIGNED -	REVISED -
PLOT SCALE = 24.999950' / in.	CHECKED - ZRW	REVISED -
PLOT DATE = 12/9/2021	DATE - 12/06/2021	REVISED -

**STATE OF ILLINOIS  
 DEPARTMENT OF TRANSPORTATION**

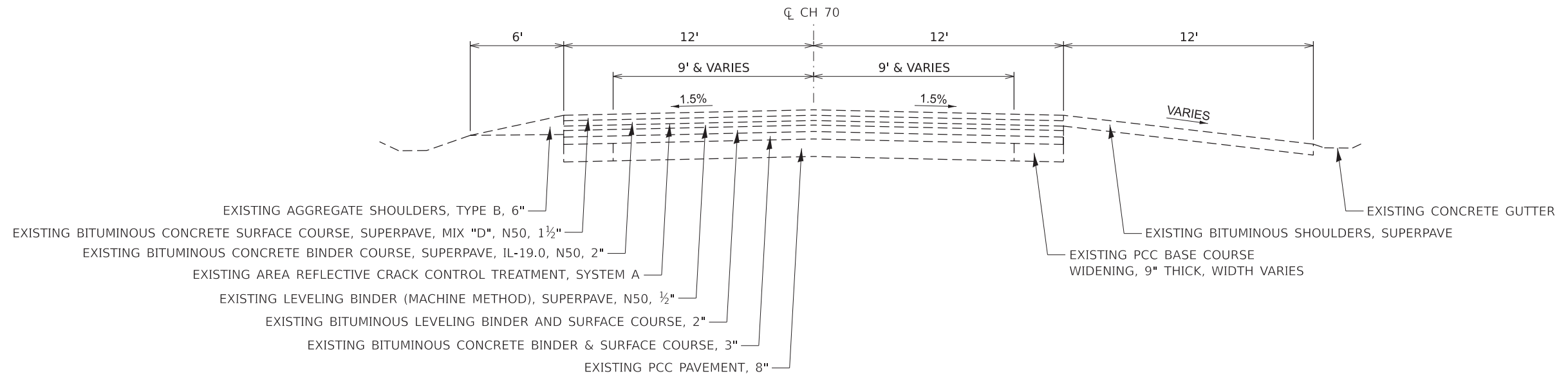
**TYPICAL CROSS SECTIONS**

SCALE: SHEET 1 OF 4 SHEETS STA. TO STA.

F.A.U. RTE.	SECTION	COUNTY	TOTAL SHEETS	SHEET NO.
6385	20-00182-03-RS	MCLEAN	20	5
CONTRACT NO. 91608				
ILLINOIS FED. AID PROJECT				

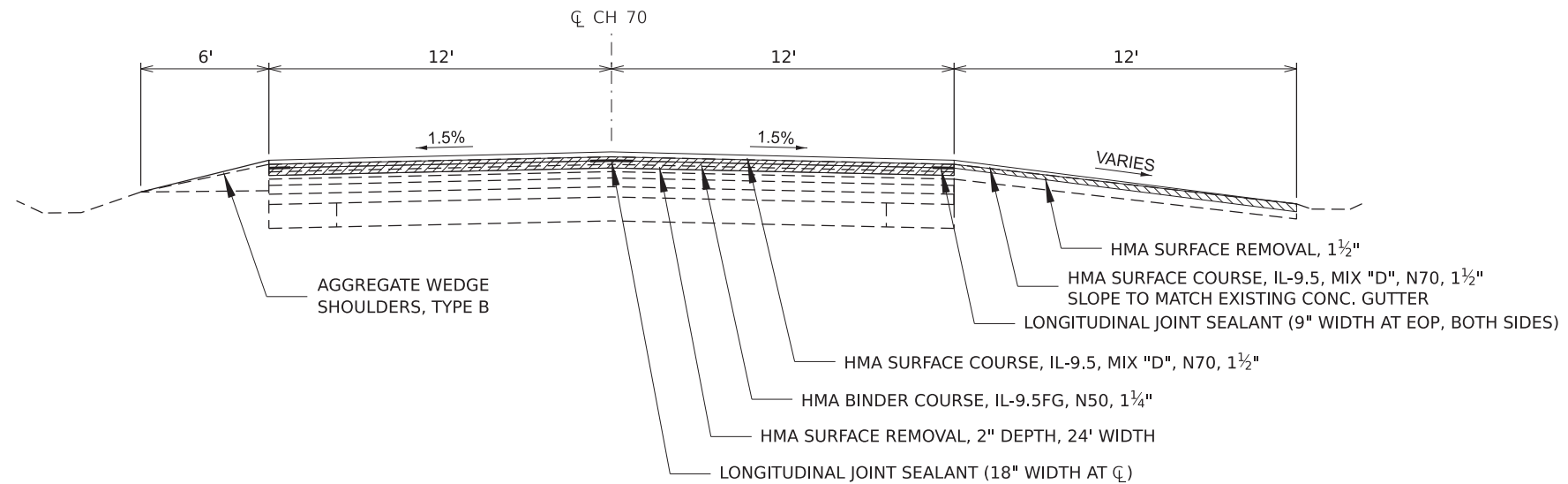
### EXISTING TYPICAL CROSS SECTION

SEC. 20-00182-03-R5  
 WHITE OAK RD (C.H. 70)  
 INTERSTATE 55/74 OVERPASS  
 STA. 916+55 TO STA. 919+87  
 (NOT TO SCALE)



### PROPOSED TYPICAL CROSS SECTION

SEC. 20-00182-03-R5  
 WHITE OAK RD (C.H. 70)  
 INTERSTATE 55/74 OVERPASS  
 STA. 916+55 TO STA. 919+87  
 (NOT TO SCALE)



MODEL: X-Sections.dwg 2  
 FILE NAME: X:\CountyRoads\CH 70\20-00182-03-R5 - White Oak Road - 2021\Design\DCM\Plan\_Sheets\20-00182-03-R5\_White Oak\_Typ\_X-Sections.dwg

USER NAME = zachary.wall	DESIGNED -	REVISED -
	DRAWN - CCF	REVISED -
PLOT SCALE = 24.999950' / in.	CHECKED - ZRW	REVISED -
PLOT DATE = 12/9/2021	DATE - 12/06/2021	REVISED -

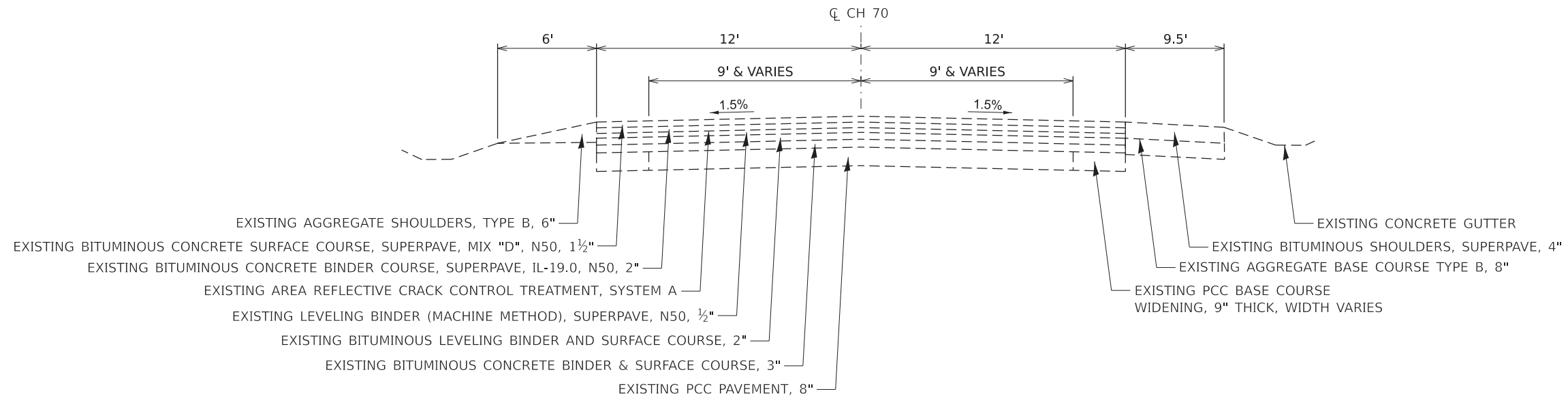
STATE OF ILLINOIS  
 DEPARTMENT OF TRANSPORTATION

TYPICAL CROSS SECTIONS			
SCALE:	SHEET 2	OF 4 SHEETS	STA. TO STA.

F.A.U. RTE.	SECTION	COUNTY	TOTAL SHEETS	SHEET NO.
6385	20-00182-03-R5	MCLEAN	20	6
CONTRACT NO. 91608				
ILLINOIS FED. AID PROJECT				

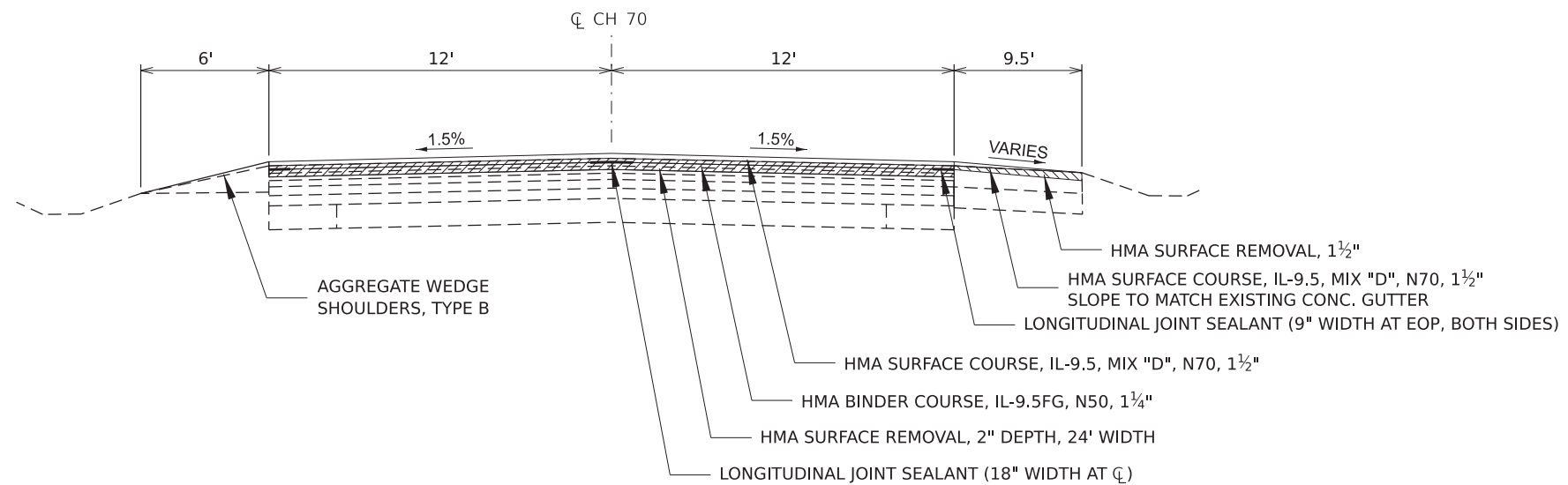
### EXISTING TYPICAL CROSS SECTION

SEC. 20-00182-03-R5  
 WHITE OAK RD (C.H. 70)  
 ROUTE 150 OVERPASS  
 STA. 1040+81 TO STA. 1042+66  
 (NOT TO SCALE)



### PROPOSED TYPICAL CROSS SECTION

SEC. 20-00182-03-R5  
 WHITE OAK RD (C.H. 70)  
 ROUTE 150 OVERPASS  
 STA. 1040+81 TO STA. 1042+66  
 (NOT TO SCALE)



MODEL: X-Sections.dwg  
 FILE NAME: X:\CountyRoads\CH 70\20-00182-03-R5 - White Oak Road - 2021\Design\DCM\Plan\_Sheets\20-00182-03-R5\_White Oak\_Typ\_X-Sections.dwg

USER NAME = zachary.wall	DESIGNED -	REVISD -
	DRAWN - CCF	REVISD -
PLOT SCALE = 24.999950' / in.	CHECKED - ZRW	REVISD -
PLOT DATE = 12/9/2021	DATE - 12/06/2021	REVISD -

**STATE OF ILLINOIS  
 DEPARTMENT OF TRANSPORTATION**

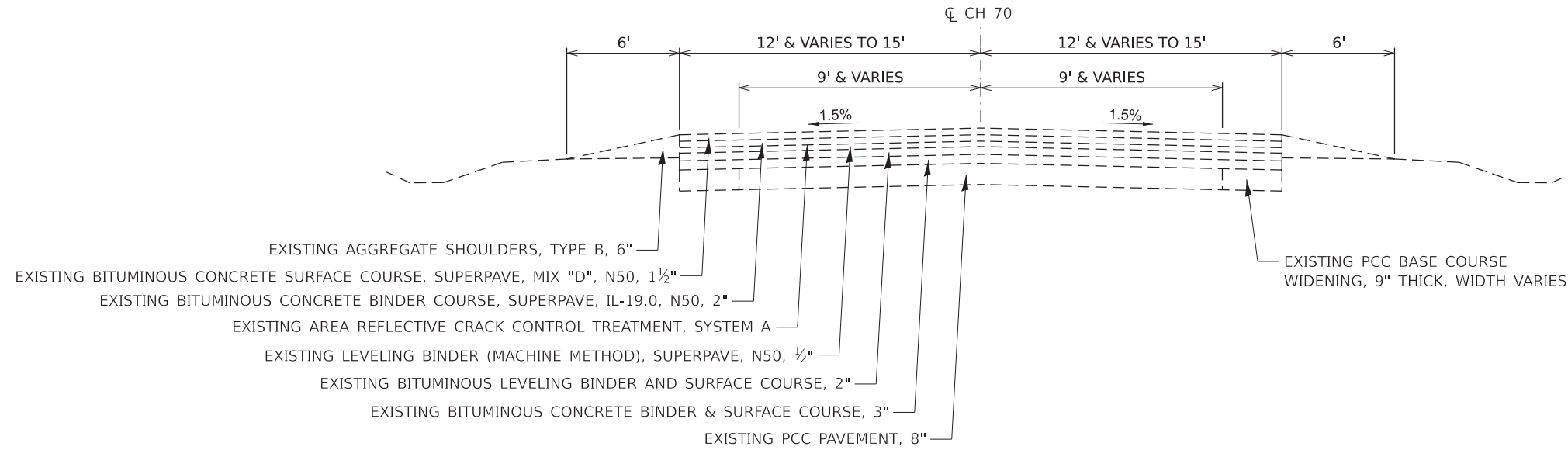
**TYPICAL CROSS SECTIONS**

SCALE: SHEET 3 OF 4 SHEETS STA. TO STA.

F.A.U. RTE.	SECTION	COUNTY	TOTAL SHEETS	SHEET NO.
6385	20-00182-03-R5	MCLEAN	20	7
CONTRACT NO. 91608				
ILLINOIS FED. AID PROJECT				

### EXISTING TYPICAL CROSS SECTION

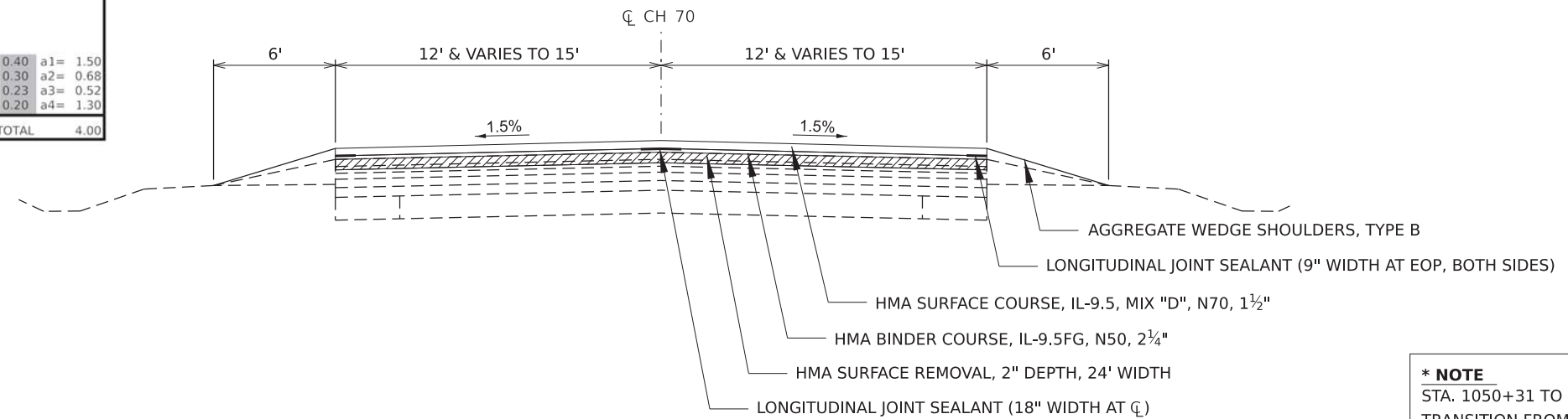
SEC. 20-00182-03-RS  
 WHITE OAK RD (C.H. 70)  
 STA. 1051+81 TO STA. 1061+30  
 STA. 1061+30 TO STA. 1062+65 (TAPERS FROM 24' TO 30' WIDTH)  
 STA. 1062+65 TO STA. 1066+64 (30' PAVEMENT WIDTH)  
 (NOT TO SCALE)



### PROPOSED TYPICAL CROSS SECTION

SEC. 20-00182-03-RS  
 WHITE OAK RD (C.H. 70)  
 STA. 1051+81 TO STA. 1061+30\*  
 STA. 1061+30 TO STA. 1062+65 (TAPERS FROM 24' TO 30' WIDTH)  
 STA. 1062+65 TO STA. 1066+64 (30' PAVEMENT WIDTH)  
 (NOT TO SCALE)

WHITE OAK ROAD (CH 70) - 20-00182-03-RS	
STA. 1050+31 to STA. 1066+64	
STRUCTURAL DESIGN DATA 80,000#	
CLASS II ROAD DESIGN PERIOD 20 YEARS	
CURRENT A.D.T.	2400
STRUCTURAL DESIGN TRAFFIC:	2928 YEAR: 2041
PERCENT OF DESIGN TRAFFIC IN DESIGN LANE:	
P.C. 88%	S.U. 7% M.U. 5%
P.C. 2577	S.U. 205 M.U. 146
MINIMUM SOIL SUPPORT:	IBR= 3.0
TRAFFIC FACTOR (T.F.)=	0.80
STRUCTURAL NUMBER (DN)=	4.00
PAVEMENT STRUCTURE MATERIALS:	
SURFACE: PROPOSED HMA PAVEMENT	3.75 @ 0.40 a1= 1.50
BASE: EXISTING HMA PAVEMENT	2.25 @ 0.30 a2= 0.68
BASE: EXISTING HMA PAVEMENT	2.25 @ 0.23 a3= 0.52
SUBBASE: EXISTING CONCRETE BASE/PAVEMENT	6.5 @ 0.20 a4= 1.30
PROPOSED Dt TOTAL 4.00	



**\* NOTE**  
 STA. 1050+31 TO STA. 1051+81 (150')  
 TRANSITION FROM 1 1/4" TO 2 1/4" BINDER THICKNESS

MODEL: X-Sections.dwg  
 FILE NAME: X:\CountyRoads\CH 70\20-00182-03-RS - White Oak Road - 2022\Design\DCM\Plan\_Sheets\20-00182-03-RS\_White\_Oak\_Typ\_X-Sections.dwg

USER NAME = zachary.wall	DESIGNED -	REVISED -
PLOT SCALE = 24.999950' / in.	DRAWN - CCF	REVISED -
PLOT DATE = 12/9/2021	CHECKED - ZRW	REVISED -
	DATE - 12/06/2021	REVISED -

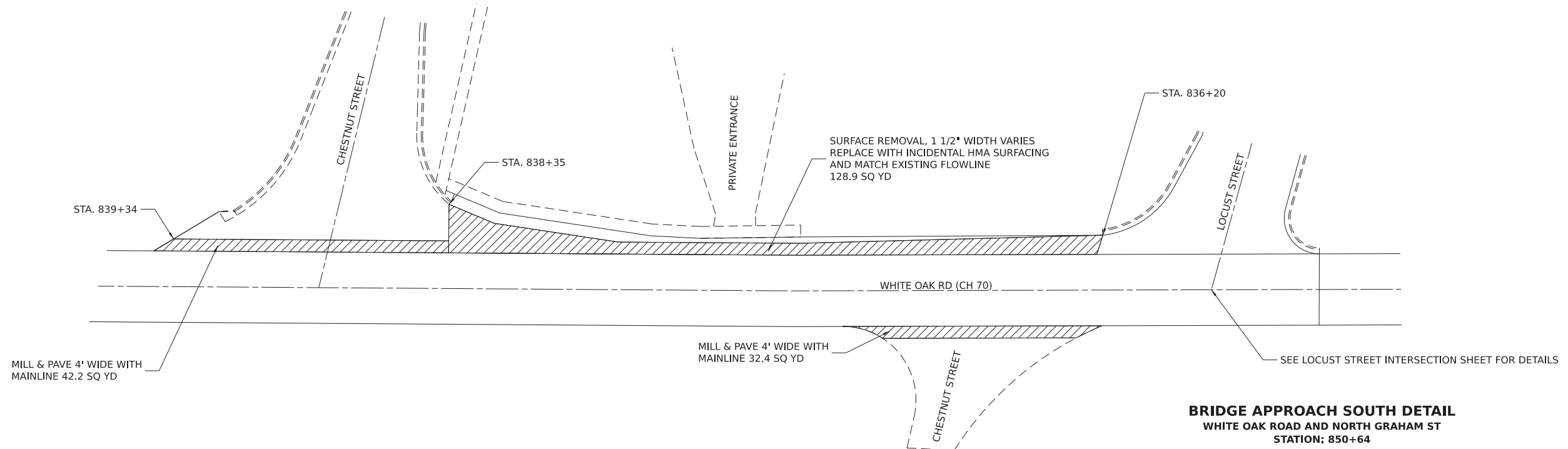
STATE OF ILLINOIS  
 DEPARTMENT OF TRANSPORTATION

TYPICAL CROSS SECTIONS	
SCALE:	SHEET 4 OF 4 SHEETS STA. TO STA.

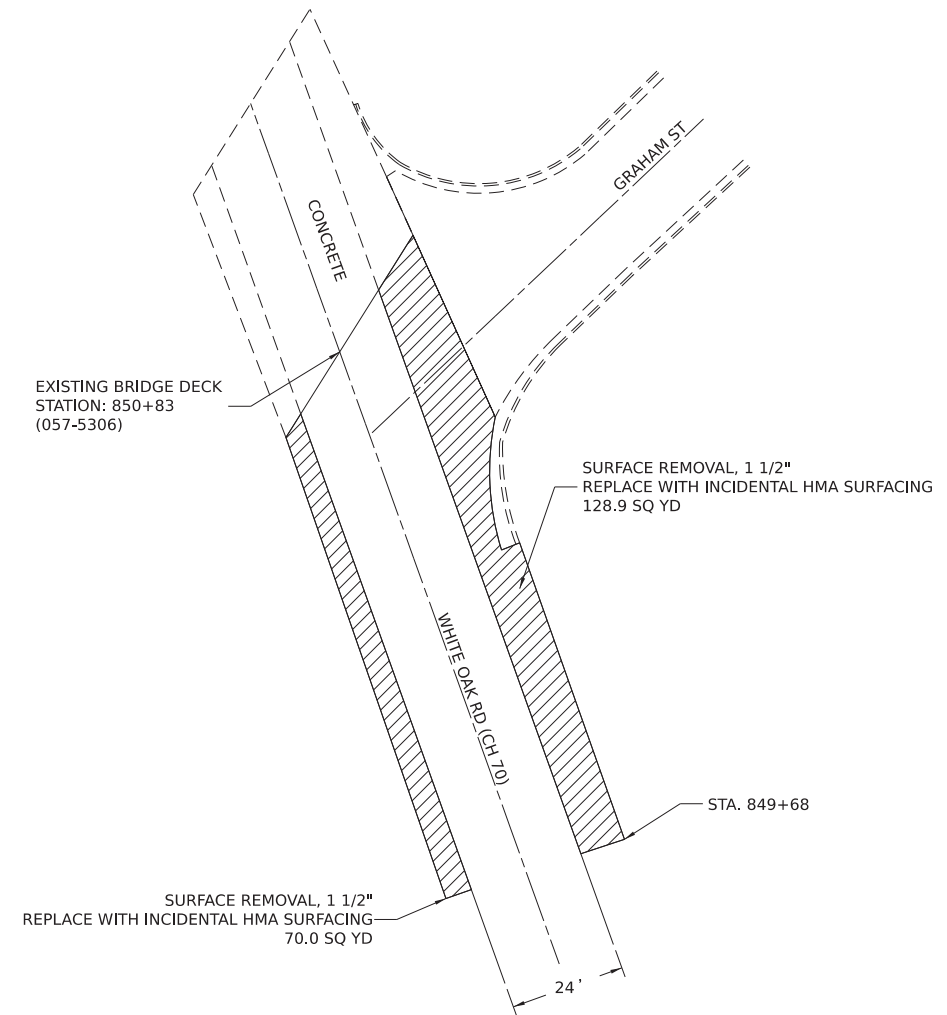
F.A.U. RTE.	SECTION	COUNTY	TOTAL SHEETS	SHEET NO.
6385	20-00182-03-RS	MCLEAN	20	8
CONTRACT NO. 91608				
ILLINOIS FED. AID PROJECT				



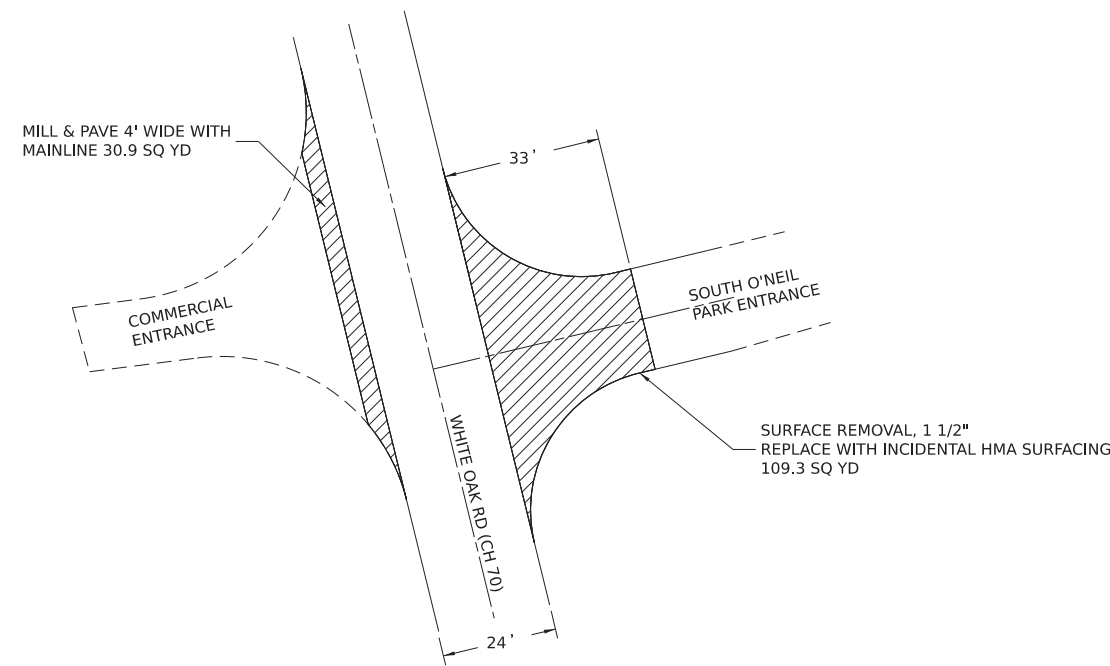
**SPECIAL SIDE ROAD RETURN DETAIL**  
**WHITE OAK ROAD FROM LOCUST ST TO CHESTNUT ST**  
**STATION 835+80**



**BRIDGE APPROACH SOUTH DETAIL**  
**WHITE OAK ROAD AND NORTH GRAHAM ST**  
**STATION: 850+64**



**SPECIAL SIDE ROAD RETURN DETAIL**  
**WHITE OAK ROAD AND SOUTH O'NEIL PARK ENTRANCE**  
**STATION: 843+69**



MODEL: Spt Int Detail\_1  
 FILE NAME: X:\CountryRoads\CH 70\20-00182-03-R5 - White Oak Road - 2021\Design\DCM\Plan\_Sheets\20-00182-03-R5\_White Oak\_Spt Int\_Details.dgn

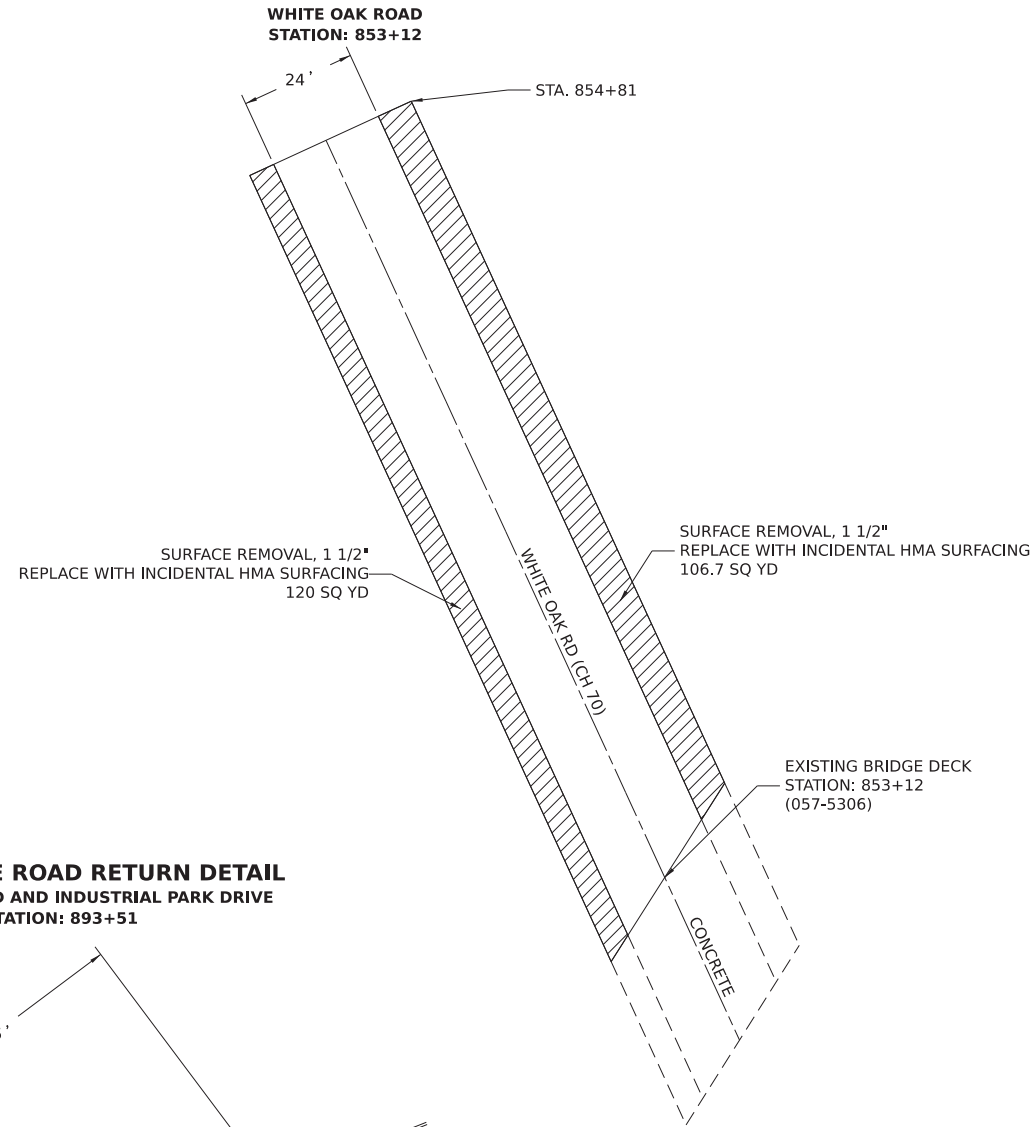
USER NAME = zachary.wall	DESIGNED -	REVISED -
	DRAWN - CCF	REVISED -
PLOT SCALE = 19.99996000 ' / in.	CHECKED - LDH	REVISED -
PLOT DATE = 12/6/2021	DATE - 12/06/2021	REVISED -

**STATE OF ILLINOIS**  
**DEPARTMENT OF TRANSPORTATION**

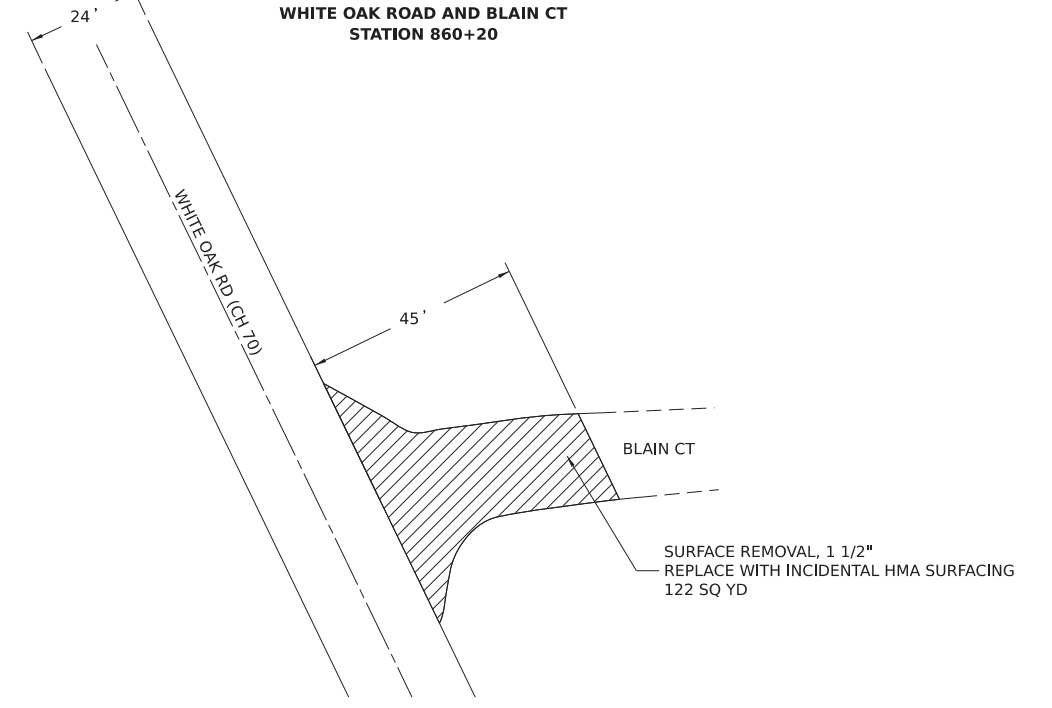
<b>SPECIAL INTERSECTION DETAILS</b>			
SCALE:	SHEET 1	OF 4 SHEETS	STA. TO STA.

F.A.U. RTE.	SECTION	COUNTY	TOTAL SHEETS	SHEET NO.
6385	20-00182-03-R5	MCLEAN	20	9
CONTRACT NO. 91608				
ILLINOIS FED. AID PROJECT				

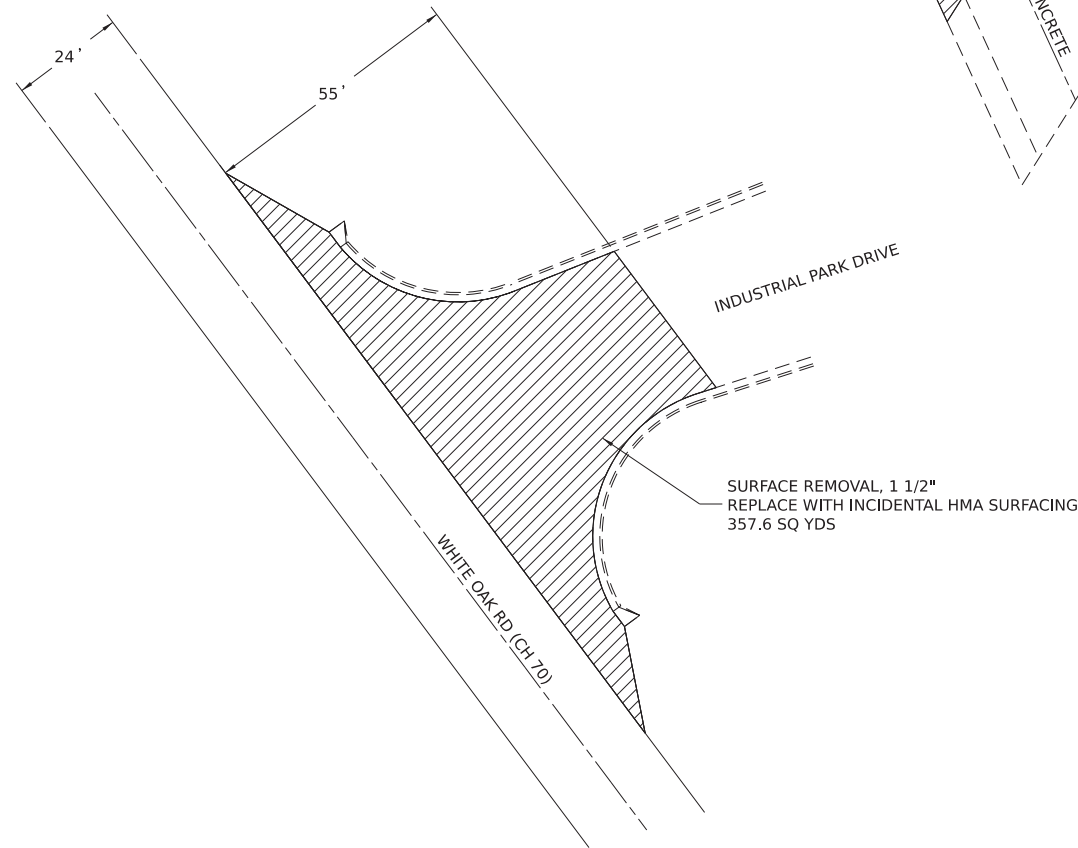
**BRIDGE APPROACH NORTH MILLING DETAIL**



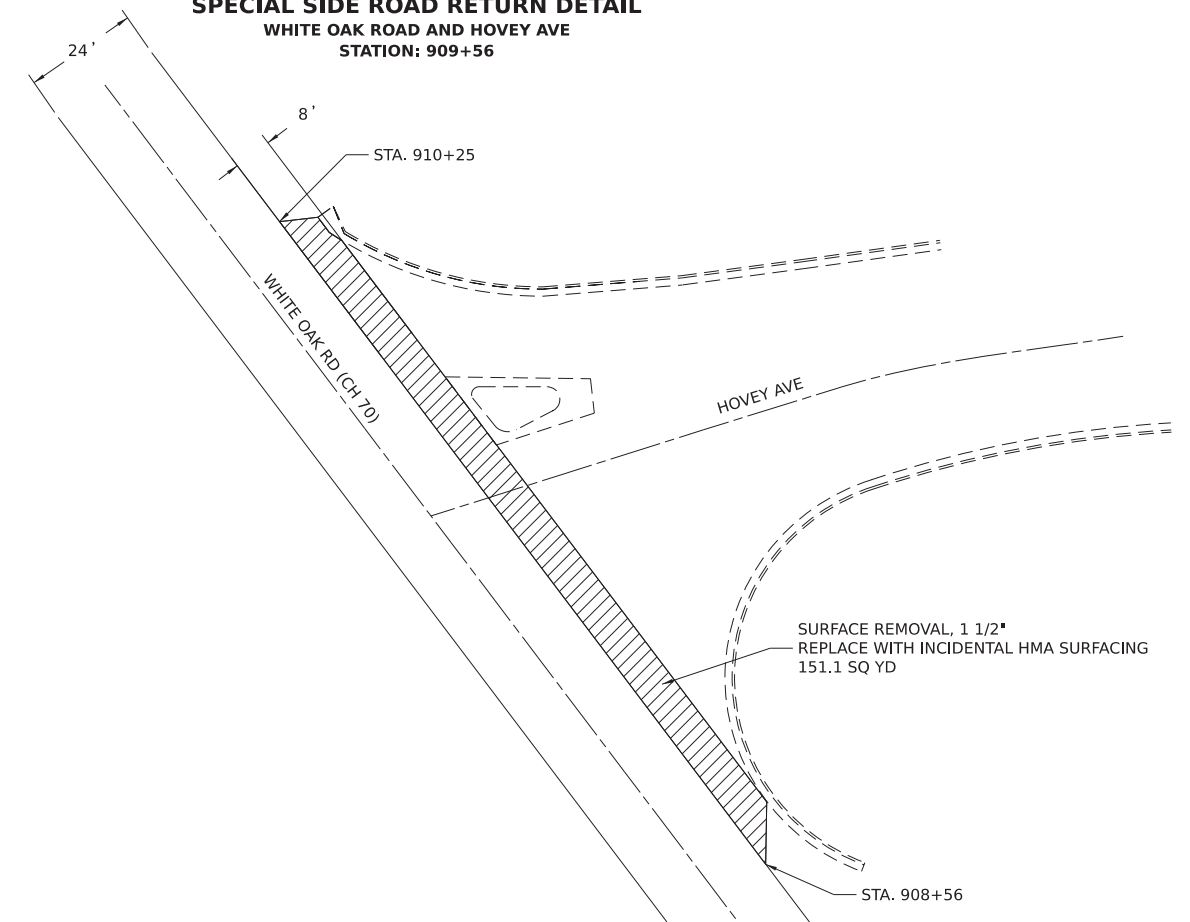
**SPECIAL SIDE ROAD RETURN DETAIL**



**SPECIAL SIDE ROAD RETURN DETAIL**  
WHITE OAK ROAD AND INDUSTRIAL PARK DRIVE  
STATION: 893+51



**SPECIAL SIDE ROAD RETURN DETAIL**  
WHITE OAK ROAD AND HOVEY AVE  
STATION: 909+56



MODEL: Spt Int Details 2  
 FILE NAME: X:\CountryRoads\CH 70\20-00182-03-R5 - White Oak Road - 2021\Design\DCM\Plan\_Sheets\20-00182-03-R5 - White Oak\_Spt Int\_Details.dgn

USER NAME = zachary.wall	DESIGNED -	REVISED -
	DRAWN - CCF	REVISED -
PLOT SCALE = 19.99996000 ' / in.	CHECKED - LDH	REVISED -
PLOT DATE = 12/6/2021	DATE - 12/06/2021	REVISED -

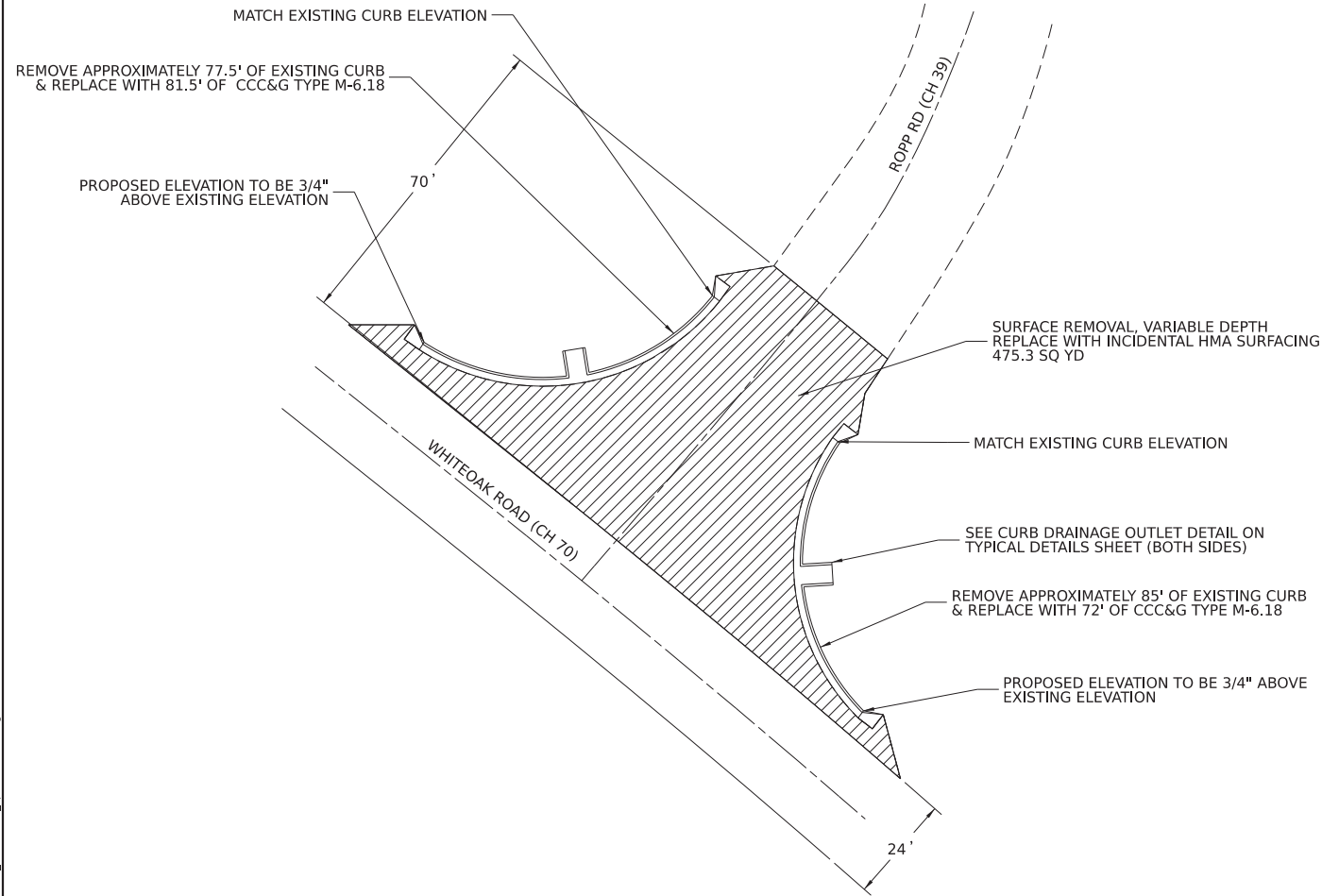
**STATE OF ILLINOIS  
DEPARTMENT OF TRANSPORTATION**

**SPECIAL INTERSECTION DETAILS**

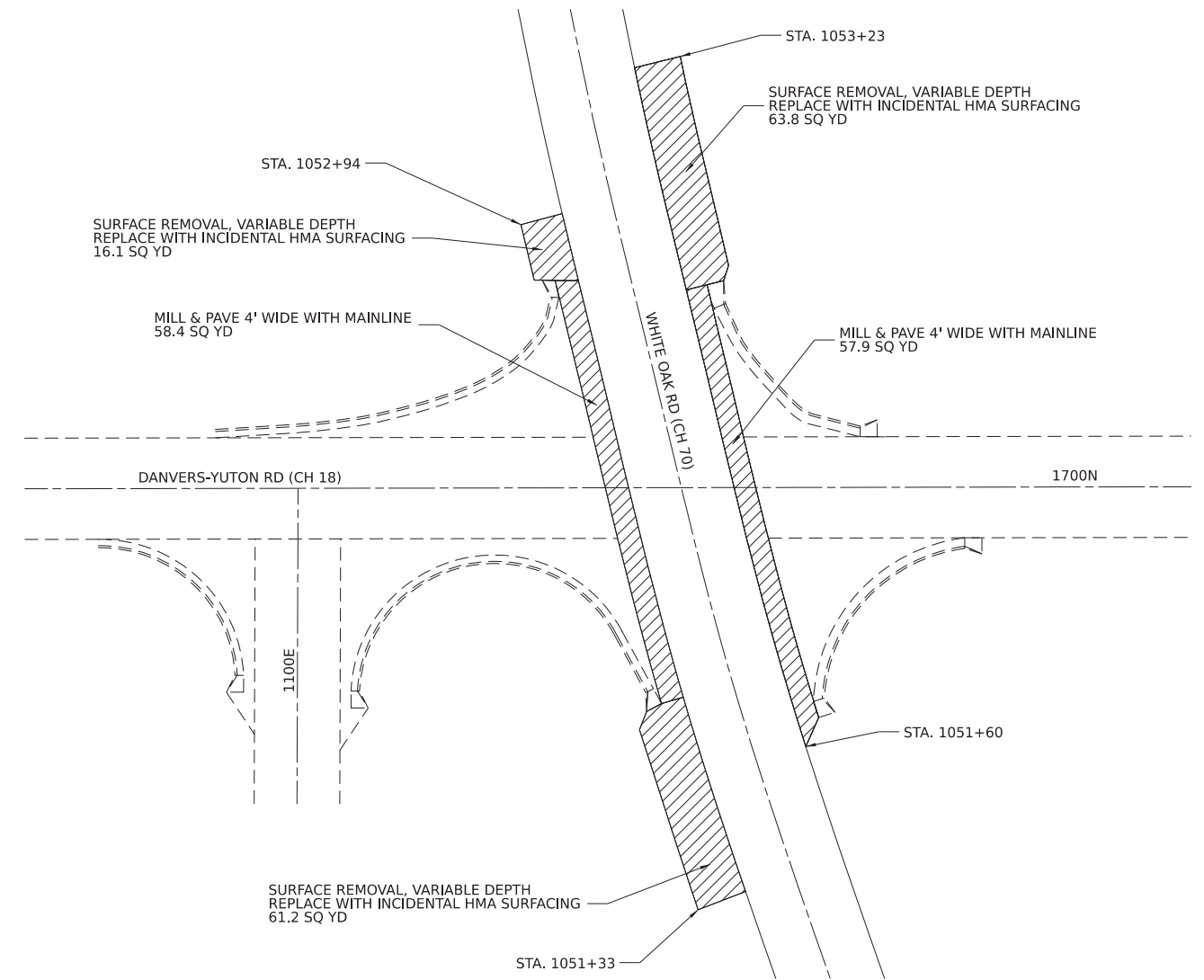
SCALE: SHEET 2 OF 4 SHEETS STA. TO STA.

F.A.U. RTE.	SECTION	COUNTY	TOTAL SHEETS	SHEET NO.
6385	20-00182-03-R5	MCLEAN	20	10
ILLINOIS FED. AID PROJECT			CONTRACT NO. 91608	

**SPECIAL SIDE ROAD RETURN DETAIL**  
**WHITEOAK ROAD AND ROPP ROAD**  
**STATION: 974+90**



**SPECIAL SIDE ROAD RETURN DETAIL**  
**WHITEOAK ROAD AND DANVERS-YUTON ROAD**  
**STATION: 1052+26**



MODEL: Spt Int Details 3  
 FILE NAME: X:\CountyRoads\CH 70\20-00182-03-RS - White Oak Road - 2021\Design\DWG\Plan\_Sheets\20-00182-03-RS\_White Oak\_Spt Int\_Details.dwg

USER NAME = zachary.wall	DESIGNED -	REVISED -
	DRAWN - CCF	REVISED -
PLOT SCALE = 19.99996000 ' / in.	CHECKED - LDH	REVISED -
PLOT DATE = 12/6/2021	DATE - 12/06/2021	REVISED -

**STATE OF ILLINOIS**  
**DEPARTMENT OF TRANSPORTATION**

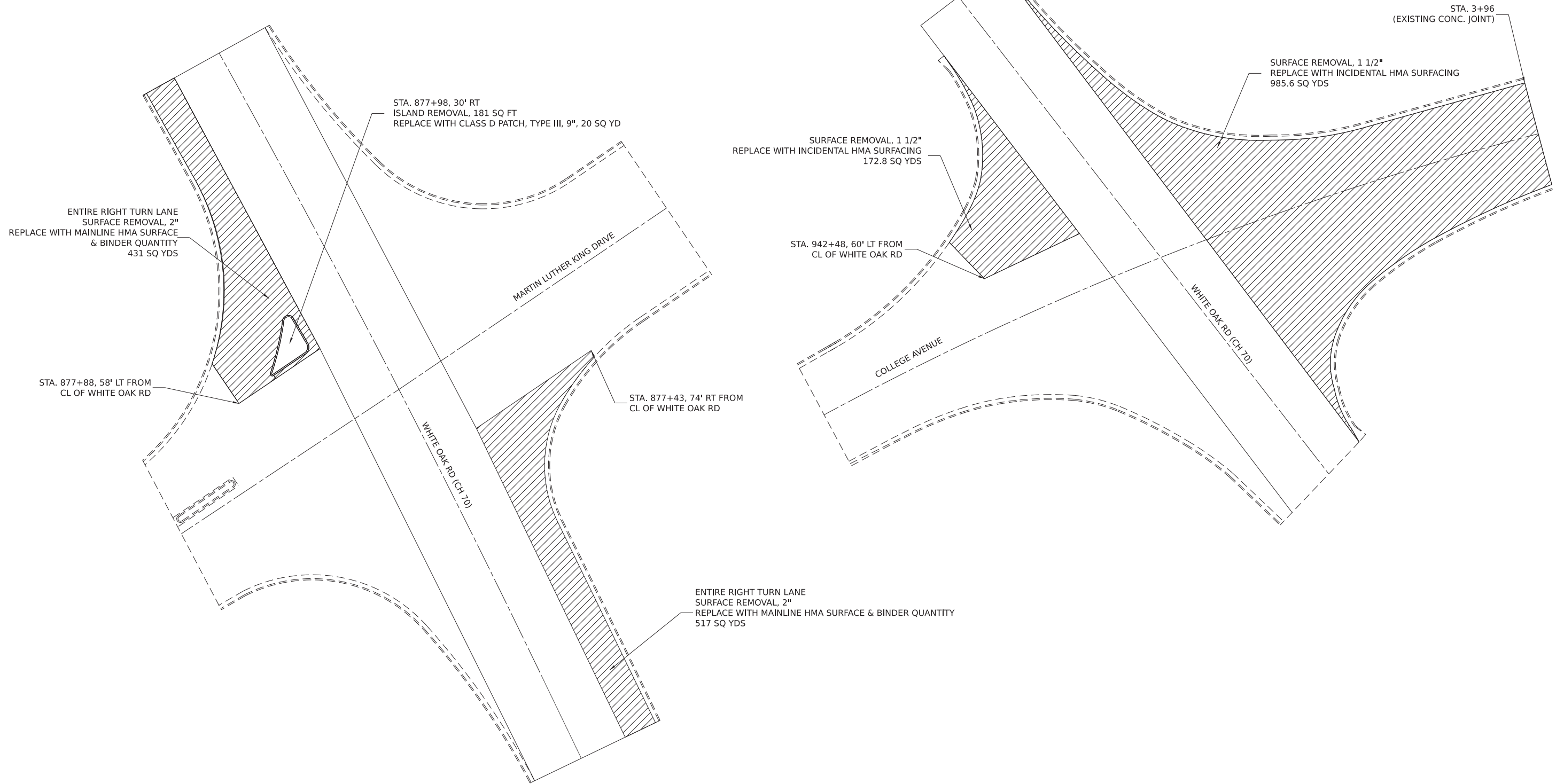
**SPECIAL INTERSECTION DETAILS**

SCALE: SHEET 3 OF 4 SHEETS STA. TO STA.

F.A.U. RTE.	SECTION	COUNTY	TOTAL SHEETS	SHEET NO.
6385	20-00182-03-RS	MCLEAN	20	11
ILLINOIS FED. AID PROJECT			CONTRACT NO. 91608	

**SPECIAL INTERSECTION DETAIL**  
**WHITEOAK ROAD AND MARTIN LUTHER KING DRIVE**  
**STATION: 877+64**

**SPECIAL INTERSECTION DETAIL**  
**WHITEOAK ROAD AND COLLEGE AVENUE**  
**STATION: 942+23**



MODEL: Spl Int Detail.dwg  
 FILE NAME: X:\County\Roads\CH 70\20-00182-03-RS - White Oak Road - 2021\Design\DWG\Plan Sheets\20-00182-03-RS\_White Oak\_Spl Int\_Details.dwg

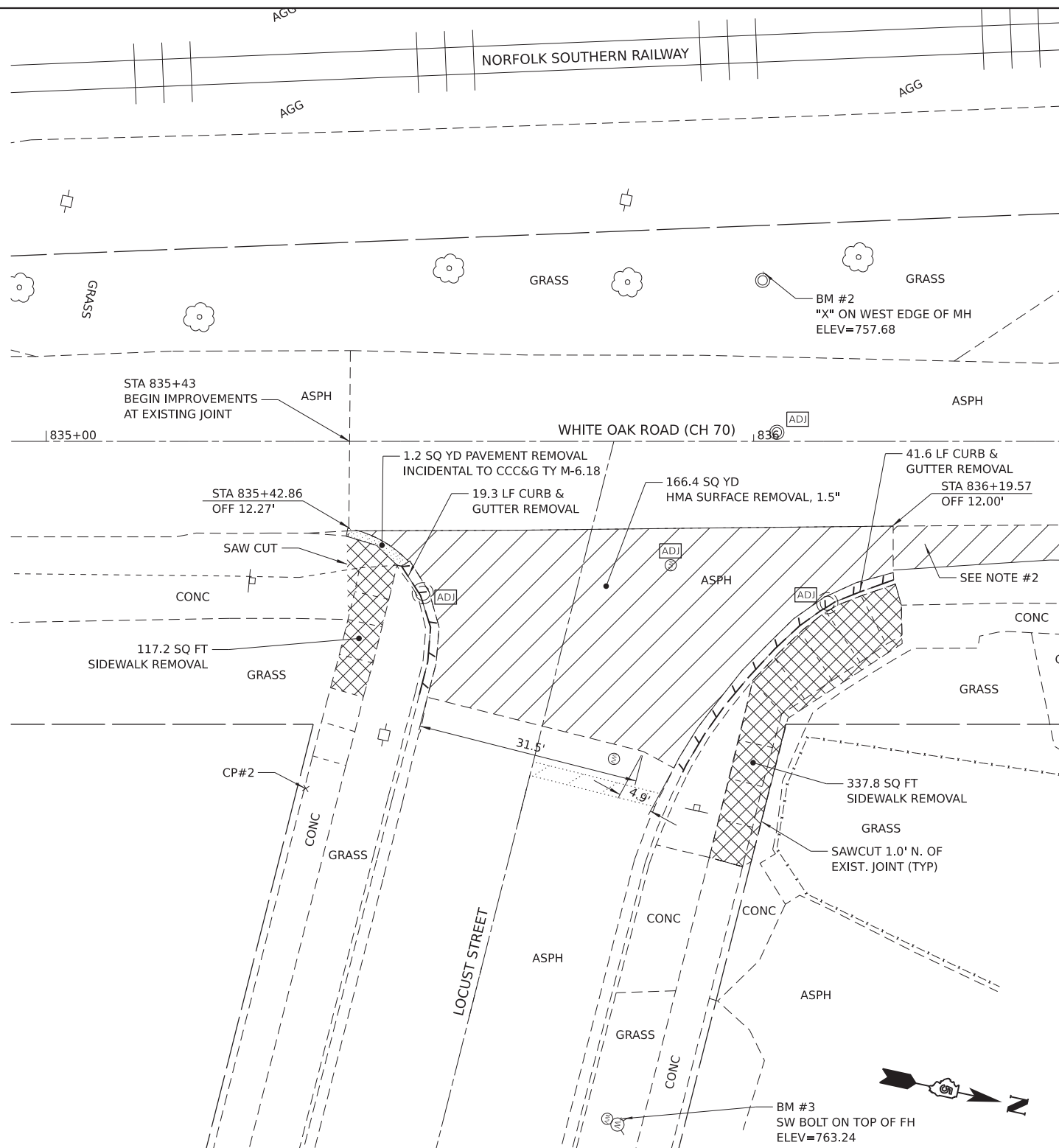
USER NAME = zachary.wall	DESIGNED -	REVISED -
	DRAWN - CCF	REVISED -
PLOT SCALE = 19.99996000 ' / in.	CHECKED - LDH	REVISED -
PLOT DATE = 12/6/2021	DATE - 12/06/2021	REVISED -

**STATE OF ILLINOIS**  
**DEPARTMENT OF TRANSPORTATION**

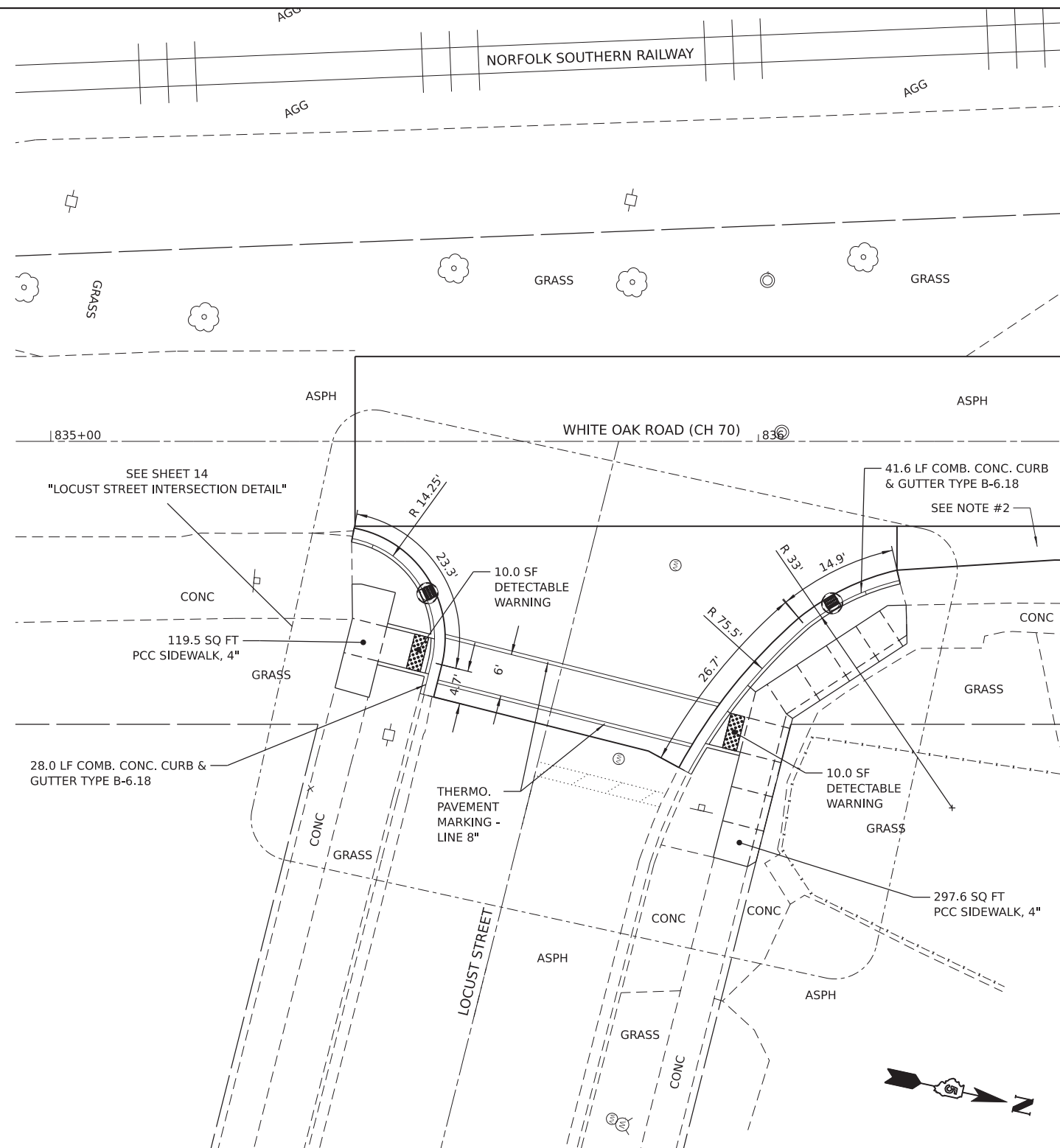
**SPECIAL INTERSECTION DETAILS**

SCALE: SHEET 4 OF 4 SHEETS STA. TO STA.

F.A.U. RTE.	SECTION	COUNTY	TOTAL SHEETS	SHEET NO.
6385	20-00182-03-RS	MCLEAN	20	12
ILLINOIS			FED. AID PROJECT	
CONTRACT NO. 91608				



**1 LOCUST STREET INTERSECTION - EXISTING CONDITIONS & REMOVAL PLAN**  
SCALE: 1"=20'



**2 LOCUST STREET INTERSECTION - PROPOSED IMPROVEMENTS**  
SCALE: 1"=20'

**BENCHMARKS AND CONTROL POINTS**

NAME	DESCRIPTION	ELEVATION	NORTHING	EASTING
BM1	R.R. SPIKE IN NORTH SIDE OF POWER POLE S. OF W. CHESTNUT ST	759.70	1390994.526	794746.608
BM2	R.R. SPIKE IN SOUTH SIDE OF POWER POLE ALONG LOCUST ST	763.49	1391112.382	794914.111
BM3	S.W. BOLT ON TOP OF FIRE HYDRANT ALONG LOCUST ST	763.24	1391161.192	794838.738
CP1	CHISLED "X" IN CONC. SIDEWALK ON WEST SIDE OF 703 WHITE OAK RD	757.12	1391244.686	794741.032
CP2	CHISLED "X" IN CONC. SIDEWALK S.E. QUADRANT OF LOCUST ST INT.	759.84	1391107.710	794802.578
CP3	"X" ON WEST EDGE OF MANHOLE RIM BETWEEN RR TRACKS AND WHITE OAK RD	757.68	1391155.355	794717.592

**LEGEND**

	HMA SURFACE REMOVAL, 1.5"		STRUCTURES TO BE ADJUSTED
	SIDEWALK REMOVAL		CURB / CURB & GUTTER REMOVAL

**GENERAL NOTES:**

- ALL GENERATED MATERIAL FROM THE CURB & GUTTER WORK SHALL REMAIN ON-SITE, WITHIN THE PROJECT LIMITS.
- SEE "SPECIAL INTERSECTIONS" SHEETS FOR CONTINUATION OF REMOVALS AND PAVING ALONG WHITE OAK ROAD TO THE INTERSECTION WITH CHESTNUT STREET.

MODEL: Locust Street (Sheet)  
 FILE NAME: X:\County\Projects\CH\_70\20-00182-03-R5 - White Oak Road - 2023\Design\DCM\Plan\_Sheets\20-00182-03-R5\_White Oak Intersections DESIGN.dgn

USER NAME = zachary.wall	DESIGNED - ZRW	REVISED -
PLOT SCALE = 0.08333317' / in.	DRAWN - ZRW	REVISED -
PLOT DATE = 12/7/2021	CHECKED - LDH	REVISED -
	DATE - 12/06/2021	REVISED -

**STATE OF ILLINOIS  
DEPARTMENT OF TRANSPORTATION**

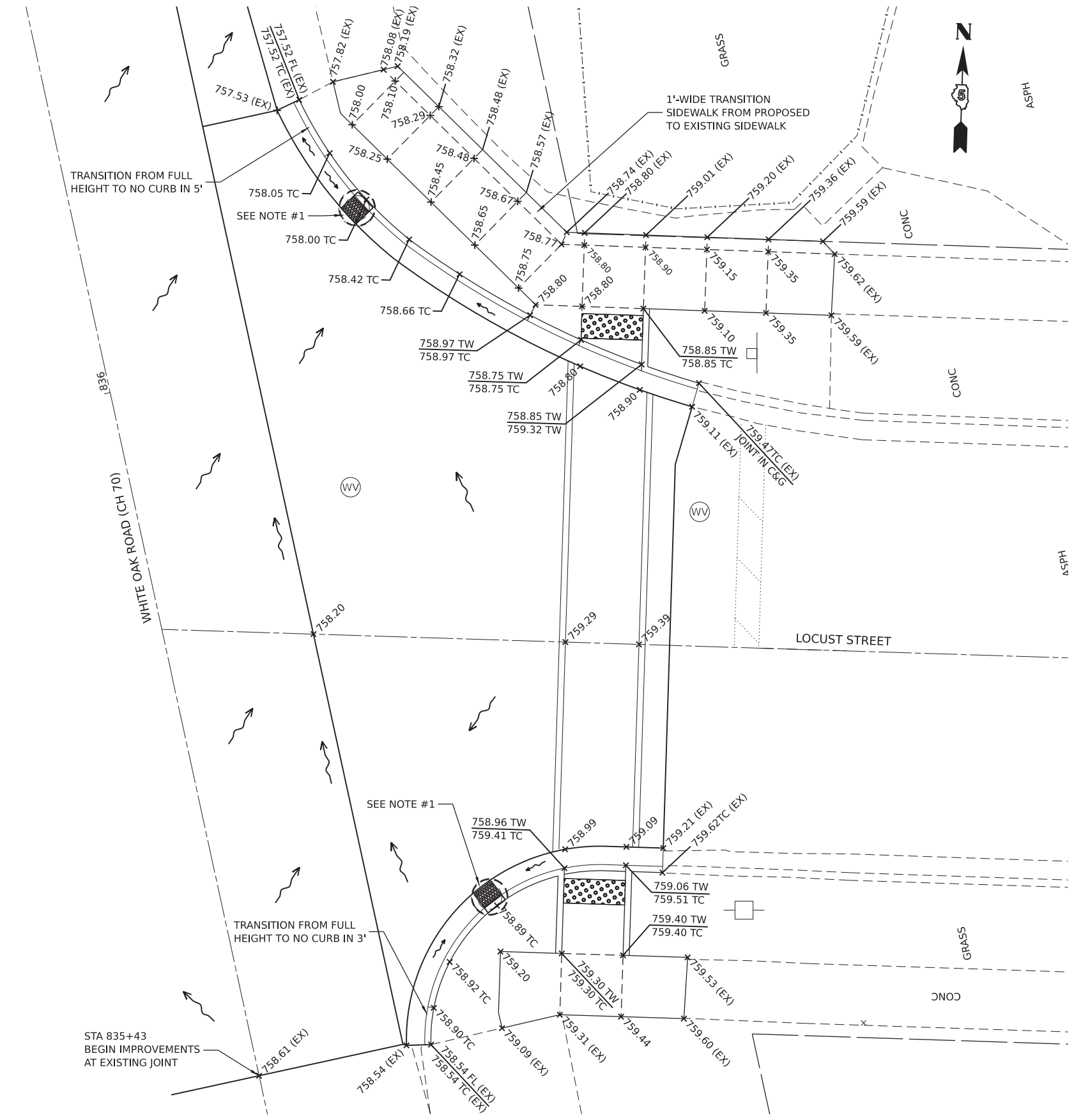
**LOCUST STREET  
INTERSECTION DETAIL**

SCALE: SHEET 1 OF 2 SHEETS STA. TO STA.

F.A.U. RTE.	SECTION	COUNTY	TOTAL SHEETS	SHEET NO.
6385	20-00182-03-R5	MCLEAN	20	13
CONTRACT NO. 91608				
ILLINOIS FED. AID PROJECT				



MODEL: Locust Street Intersection Detail (Sheet) (Sheet)  
 FILE NAME: X:\CountyRoads\CH\_70\2020\01182-03-R5 - White Oak Road - 2022\Design\DCM\Plan\_Sheets\20-00182-03-R5\_White Oak Intersections DESIGN.dgn



**1 LOCUST STREET INTERSECTION - LAYOUT & GRADING PLAN**  
 SCALE: 1"=10'

**LEGEND**

772.00 +	TOP OF PAVEMENT ELEVATION
772.00TW +	TOP OF SIDEWALK ELEVATION
772.00TC +	TOP OF CURB ELEVATION
772.00 (EX) +	MATCH EXISTING GRADE
	FLOW ARROW (GRADE TO DRAIN)

**GENERAL NOTES:**

- INLET TO BE ADJUSTED WITH NEW FRAME & GRATE (SPECIAL)  
 NEW FRAME & GRATE SHALL BE NEENAH R-3275 OR APPROVED EQUAL

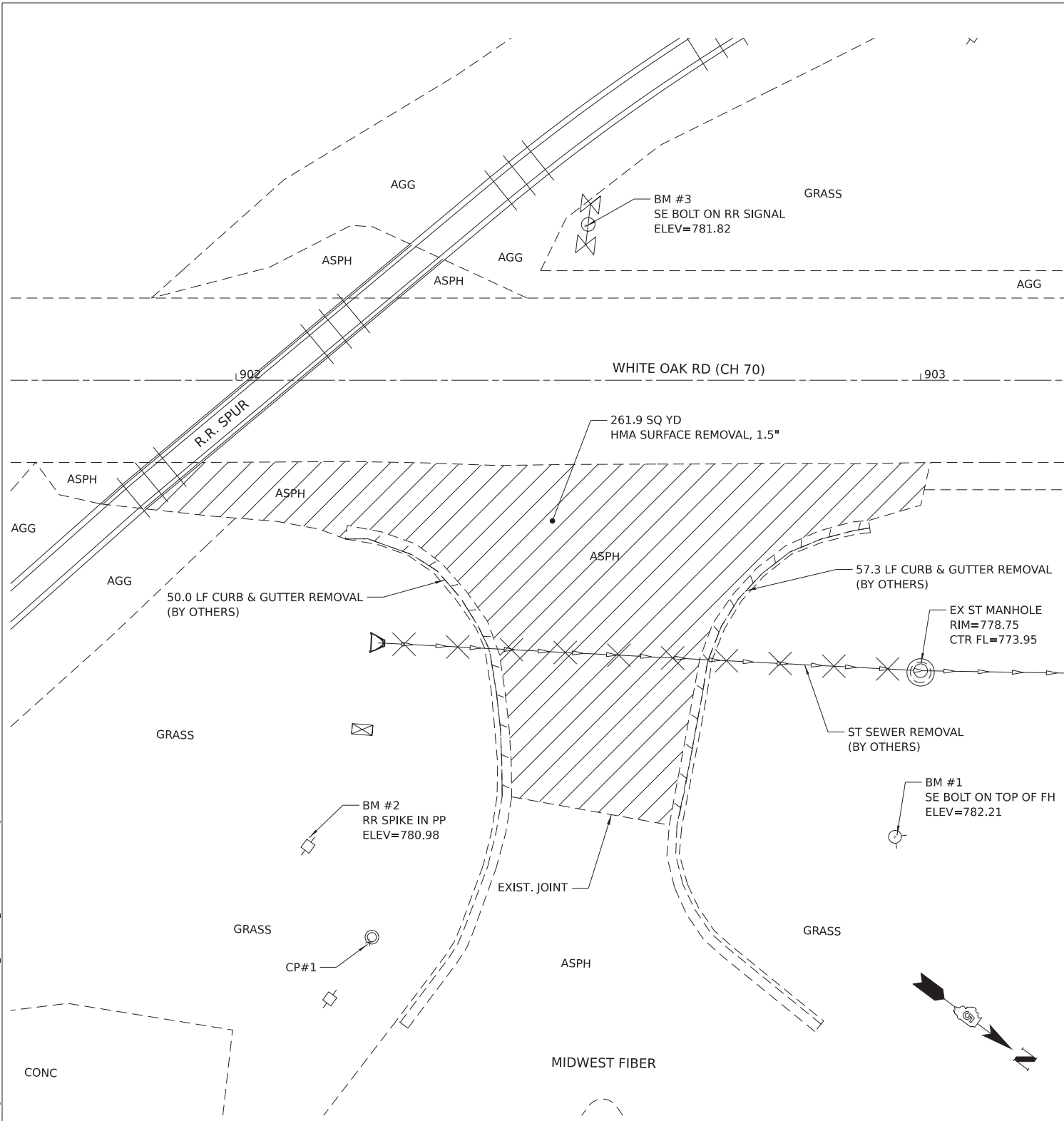
USER NAME = zachary.wall	DESIGNED - ZRW	REVISED -
	DRAWN - ZRW	REVISED -
PLOT SCALE = 0.083333317' / in.	CHECKED - LDH	REVISED -
PLOT DATE = 12/6/2021	DATE - 12/06/2021	REVISED -

**STATE OF ILLINOIS  
 DEPARTMENT OF TRANSPORTATION**

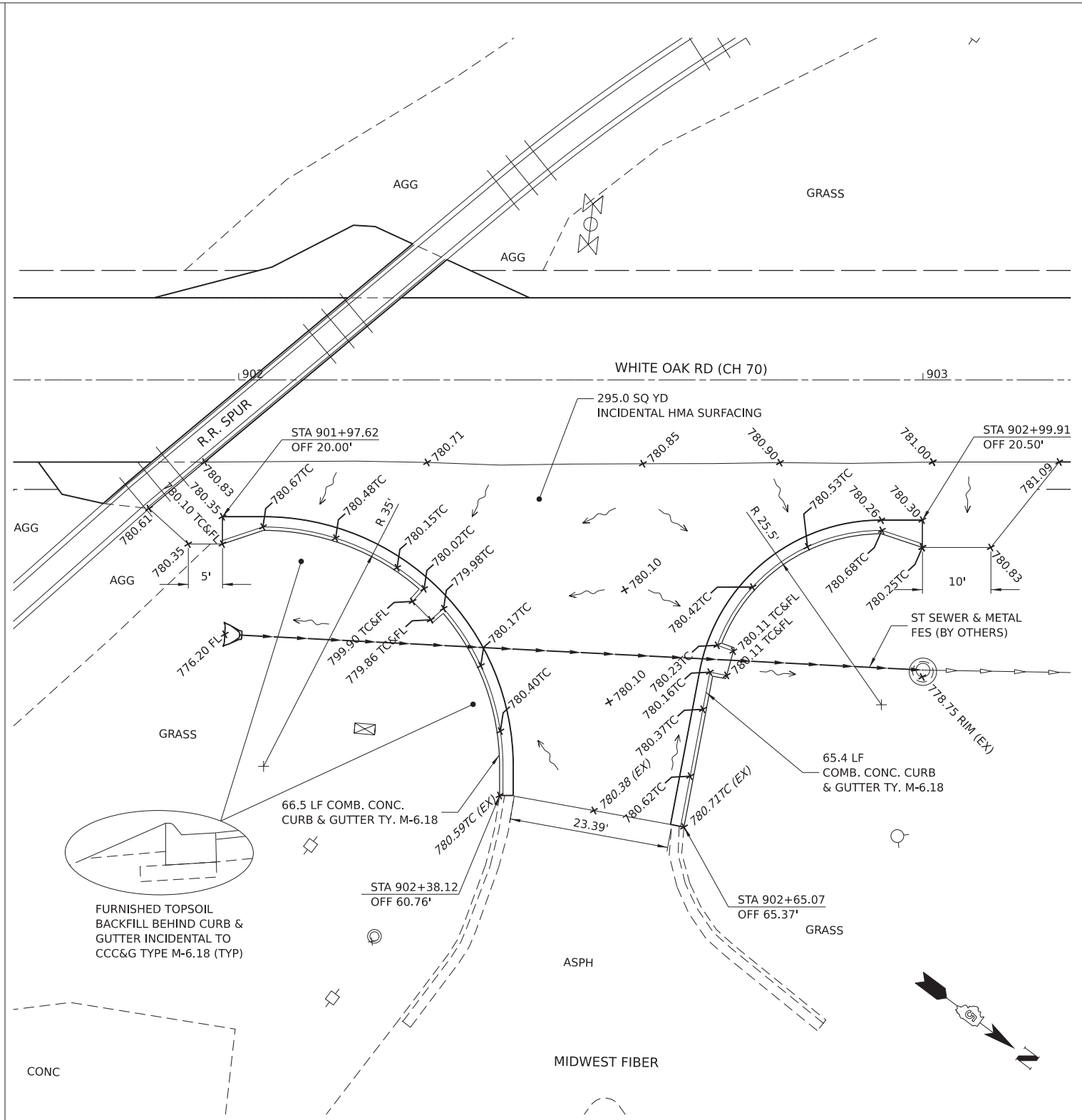
**LOCUST STREET  
 INTERSECTION DETAIL**

SCALE: SHEET 2 OF 2 SHEETS STA. TO STA.

F.A.U. RTE.	SECTION	COUNTY	TOTAL SHEETS	SHEET NO.
6385	20-00182-03-R5	MCLEAN	20	14
CONTRACT NO. 91608				
ILLINOIS FED. AID PROJECT				



**1 COMMERCIAL ENTRANCE - EXISTING CONDITIONS & REMOVAL**  
SCALE: 1"=20'



**2 COMMERCIAL ENTRANCE - PROPOSED IMPROVEMENTS**  
SCALE: 1"=20'

**BENCHMARKS AND CONTROL POINTS**

NAME	DESCRIPTION	ELEVATION	NORTHING	EASTING
BM1	S.E. BOLT ON TOP OF FIRE HYDRANT	782.21	1397124.240	791819.943
BM2	R.R. SPIKE IN NORTH SIDE OF POWER POLE	780.98	1397055.704	791871.140
BM3	S.E. BOLT AT BASE OF R.R. FLASHING SIGNAL	781.72	1397034.696	791775.351
CP1	MARKED "X" ON EAST EDGE OF MANHOLE RIM	780.44	1397071.884	791878.146
CP2	CHISLED "X" IN CONCRETE AROUND HANDHOLE	780.84	1397135.924	791898.628
CP3	CHISLED "X" ON TOP OF CONC FLARED END SECTION	779.04	1397013.105	791933.389

**LEGEND**

	HMA SURFACE REMOVAL, 1.5"	772.00 +	TOP OF PAVEMENT ELEVATION
	STORM SEWER REMOVAL	772.00TC +	TOP OF CURB ELEVATION
	CURB / CURB & GUTTER REMOVAL	772.00RIM +	STRUCTURE RIM ELEVATION
			FLOW ARROW (GRADE TO DRAIN)

- GENERAL NOTES:**
- ALL GENERATED MATERIAL FROM THE CURB & GUTTER WORK SHALL REMAIN ON-SITE, WITHIN THE PROJECT LIMITS.
  - EXISTING STORM SEWER TO BE REMOVED AND REPLACED BY MCLEAN COUNTY HIGHWAY DEPARTMENT.
  - EXISTING CURB & GUTTER TO BE REMOVED AND NEW AGGREGATE BASE FOR PROPOSED CURB AND GUTTER TO BE CONSTRUCTED BY MCLEAN COUNTY HIGHWAY DEPARTMENT.

MODEL: Midwest; File: 151641; FILE NAME: X:\CountyRoads\CH 70\20-00182-03-RS - White Oak Road - 2022\Design\DCM\Plan Sheets\20-00182-03-RS\_White Oak Intersections DESIGN.dgn

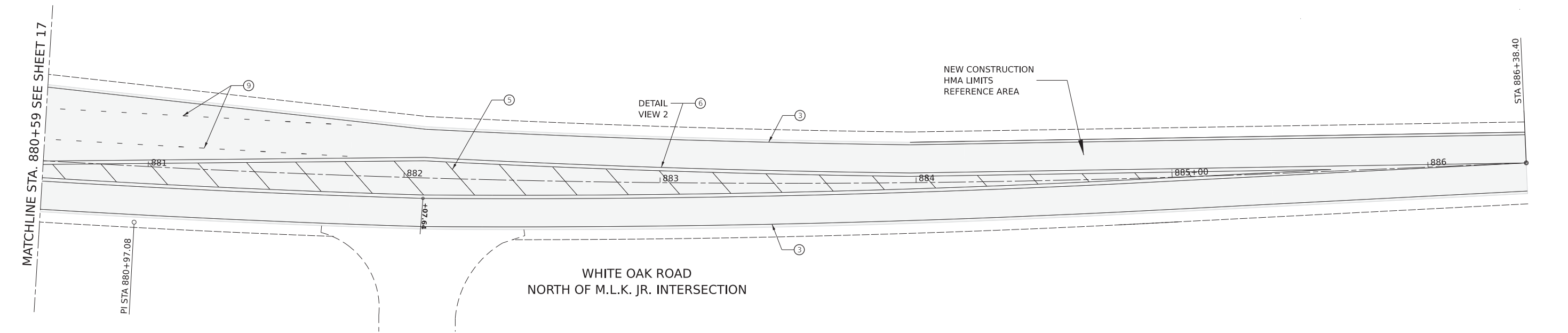
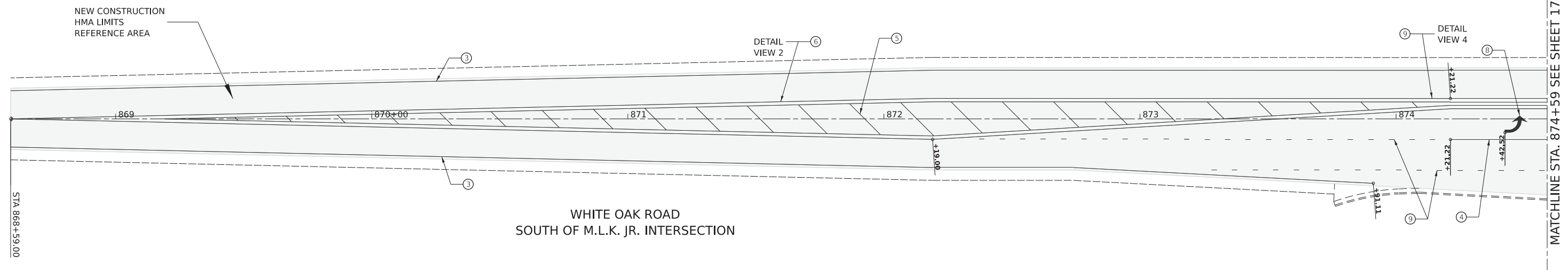
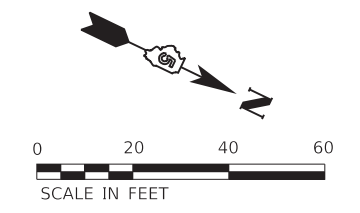
USER NAME = zachary.wall	DESIGNED - ZRW	REVISED -
	DRAWN - ZRW	REVISED -
PLOT SCALE = 0.08333317 ' / in.	CHECKED - LDH	REVISED -
PLOT DATE = 12/6/2021	DATE - 12/06/2021	REVISED -

**STATE OF ILLINOIS  
DEPARTMENT OF TRANSPORTATION**

**COMMERCIAL ENTRANCE DETAIL**

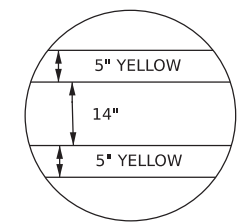
SCALE: SHEET 1 OF 1 SHEETS STA. TO STA.

F.A.U. RTE.	SECTION	COUNTY	TOTAL SHEETS	SHEET NO.
6385	20-00182-03-RS	MCLEAN	20	15
CONTRACT NO. 91608				
		ILLINOIS	FED. AID PROJECT	

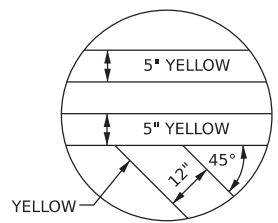


**NOTES:**

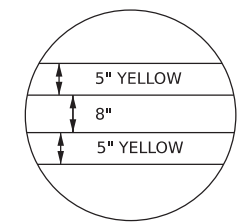
1. STOP LINES ARE SOLID WHITE, 24" WIDE, EXTENDING ACROSS ALL APPROACH LANES
2. PAVEMENT MARKING LINES SHALL NOT BE LAID DIRECTLY OVER A LONGITUDINAL CRACK, OR JOINT, NOR OVER A TAR OR ASPHALT PAINTED LINE. THE EDGES OF CENTERLINE OR LANE LINES SHALL BE OFFSET A MINIMUM OF TWO INCHES FROM A LONGITUDINAL CRACK OR JOINT.
3. EXISTING RAISED REFLECTIVE PAVEMENT MARKERS IN CONFLICT ON COLLEGE AVENUE SHALL BE REMOVED.
4. PROPOSED RAISED REFLECTIVE PAVEMENT MARKERS ARE **NOT** SHOWN ON THIS PLAN. THE MARKERS SHALL BE PLACED IN ACCORDANCE WITH STANDARD 781001.



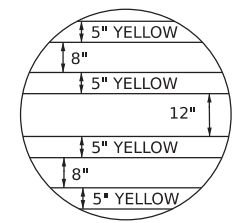
DETAIL 1



DETAIL 2



DETAIL 3



DETAIL 4

**LEGEND**

- 1 WHITE THERMOPLASTIC STOP BAR PAVEMENT MARKING LINE - 24" SOLID
- 2 YELLOW PAINT PAVEMENT MARKING LINE - 5" SOLID
- 3 WHITE THERMOPLASTIC PAVEMENT MARKING LINE - 5" SOLID
- 4 WHITE THERMOPLASTIC PAVEMENT MARKING LINE - 8" SOLID
- 5 YELLOW THERMOPLASTIC PAVEMENT MARKING LINE - 12" (ON 45° ANGLE, 20' CTC)
- 6 DOUBLE YELLOW THERMOPLASTIC PAVEMENT MARKING LINE - 5" SOLID
- 7 WHITE PAINT PAVEMENT MARKING LINE - 10' LONG, 30' GAP - 5"
- 8 THERMOPLASTIC PAVEMENT MARKING, LETTERS AND SYMBOLS (FOR LEFT AND RIGHT TURN LANES TO MLK DRIVE, BEGINNING 20' FROM FRONT OF STORAGE AND 20' FROM END OF STORAGE)
- 9 WHITE THERMOPLASTIC PAVEMENT MARKING LINE - 8" (2' LONG, 6' GAP)
- 10 PAINT PAVEMENT MARKING, LETTERS AND SYMBOLS
- 11 WHITE THERMOPLASTIC PAVEMENT MARKING LINE - 12"

MODEL/PLOT MARK - MLK (Sheet1)  
FILE NAME: X:\C:\Users\zwall\OneDrive\Work\Projects\2021\Design\Plan\_Sheets\20-00182-03-R5\_MLK\_DESIGN.dgn

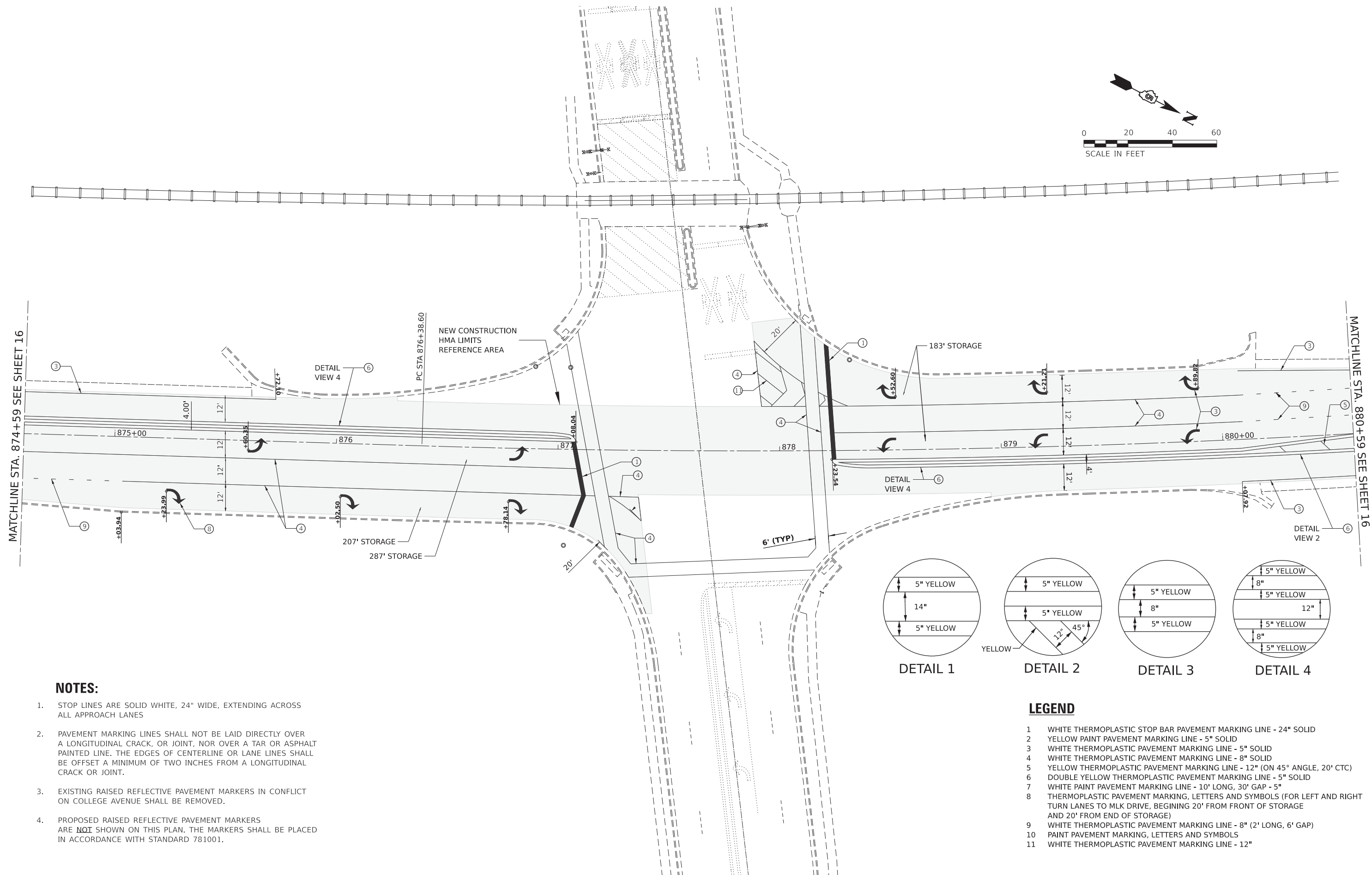
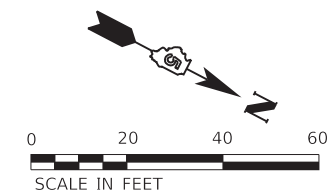
USER NAME = zachary.wall	DESIGNED -	REVISED -
	DRAWN - TRM	REVISED -
PLOT SCALE = 0.083333317' / in.	CHECKED - LDH	REVISED -
PLOT DATE = 12/6/2021	DATE - 12/06/2021	REVISED -

**STATE OF ILLINOIS  
DEPARTMENT OF TRANSPORTATION**

**MARTIN LUTHER KING JR DRIVE  
PAVEMENT MARKING PLAN**

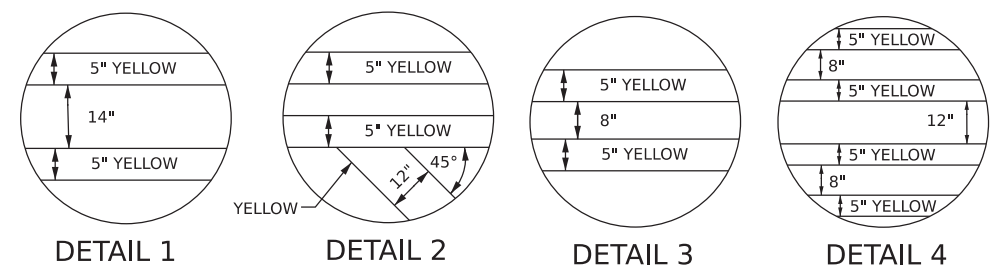
SCALE: SHEET 1 OF 4 SHEETS STA. TO STA.

F.A.U. RTE.	SECTION	COUNTY	TOTAL SHEETS	SHEET NO.
6385	20-00182-03-R5	MCLEAN	20	16
CONTRACT NO. 91608				
		ILLINOIS	FED. AID PROJECT	



MATCHLINE STA. 874+59 SEE SHEET 16

MATCHLINE STA. 880+59 SEE SHEET 16



**LEGEND**

- 1 WHITE THERMOPLASTIC STOP BAR PAVEMENT MARKING LINE - 24" SOLID
- 2 YELLOW PAINT PAVEMENT MARKING LINE - 5" SOLID
- 3 WHITE THERMOPLASTIC PAVEMENT MARKING LINE - 5" SOLID
- 4 WHITE THERMOPLASTIC PAVEMENT MARKING LINE - 8" SOLID
- 5 YELLOW THERMOPLASTIC PAVEMENT MARKING LINE - 12" (ON 45° ANGLE, 20' CTC)
- 6 DOUBLE YELLOW THERMOPLASTIC PAVEMENT MARKING LINE - 5" SOLID
- 7 WHITE PAINT PAVEMENT MARKING LINE - 10' LONG, 30' GAP - 5"
- 8 THERMOPLASTIC PAVEMENT MARKING, LETTERS AND SYMBOLS (FOR LEFT AND RIGHT TURN LANES TO MLK DRIVE, BEGINNING 20' FROM FRONT OF STORAGE AND 20' FROM END OF STORAGE)
- 9 WHITE THERMOPLASTIC PAVEMENT MARKING LINE - 8" (2' LONG, 6' GAP)
- 10 PAINT PAVEMENT MARKING, LETTERS AND SYMBOLS
- 11 WHITE THERMOPLASTIC PAVEMENT MARKING LINE - 12"

**NOTES:**

- 1. STOP LINES ARE SOLID WHITE, 24" WIDE, EXTENDING ACROSS ALL APPROACH LANES
- 2. PAVEMENT MARKING LINES SHALL NOT BE LAID DIRECTLY OVER A LONGITUDINAL CRACK, OR JOINT, NOR OVER A TAR OR ASPHALT PAINTED LINE. THE EDGES OF CENTERLINE OR LANE LINES SHALL BE OFFSET A MINIMUM OF TWO INCHES FROM A LONGITUDINAL CRACK OR JOINT.
- 3. EXISTING RAISED REFLECTIVE PAVEMENT MARKERS IN CONFLICT ON COLLEGE AVENUE SHALL BE REMOVED.
- 4. PROPOSED RAISED REFLECTIVE PAVEMENT MARKERS ARE **NOT** SHOWN ON THIS PLAN. THE MARKERS SHALL BE PLACED IN ACCORDANCE WITH STANDARD 781001.

MODEL: P:\MKT MARK - MLK 1 (Sheet).dgn  
FILE: NAME: X:\C:\Users\zwall\OneDrive\Documents\2023\Design\Plan\_Sheets\20-00182-03-R5 - White Oak Road - 2023\Design\Plan\_Sheets\20-00182-03-R5\_MLK DESIGN.dgn

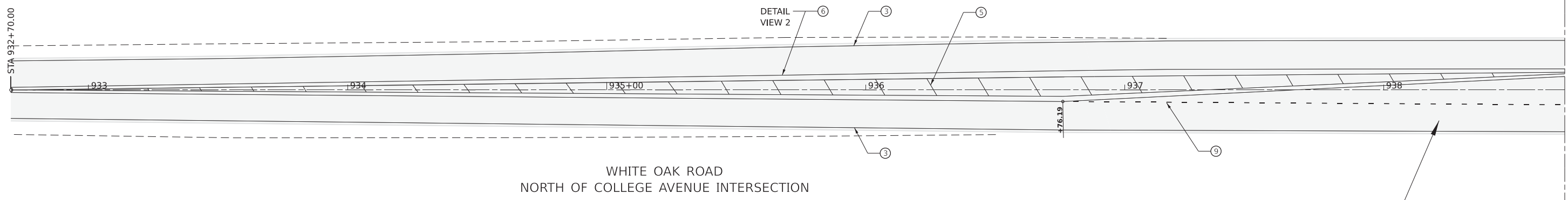
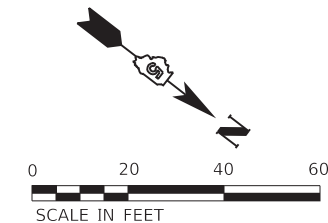
USER NAME = zachary.wall	DESIGNED -	REVISED -
	DRAWN - TRM	REVISED -
PLOT SCALE = 0.08333317 ' / in.	CHECKED - LDH	REVISED -
PLOT DATE = 12/6/2021	DATE - 12/06/2021	REVISED -

**STATE OF ILLINOIS  
DEPARTMENT OF TRANSPORTATION**

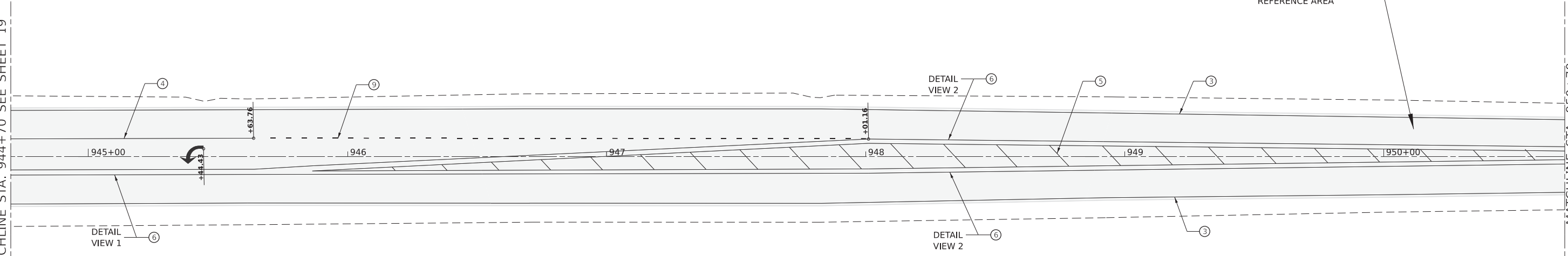
**MARTIN LUTHER KING JR DRIVE  
PAVEMENT MARKING PLAN**

SCALE: SHEET 2 OF 4 SHEETS STA. TO STA.

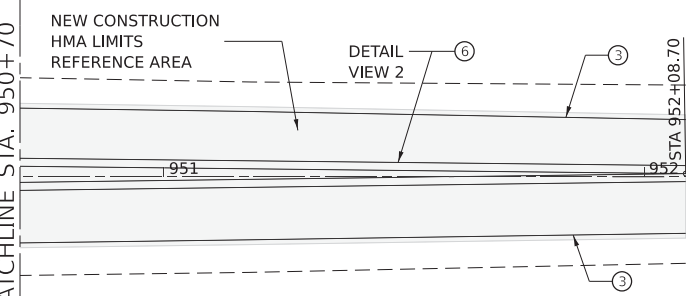
F.A.U. RTE.	SECTION	COUNTY	TOTAL SHEETS	SHEET NO.
6385	20-00182-03-R5	MCLEAN	20	17
CONTRACT NO. 91608				
ILLINOIS FED. AID PROJECT				



WHITE OAK ROAD  
NORTH OF COLLEGE AVENUE INTERSECTION



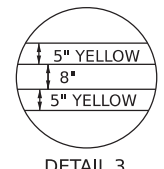
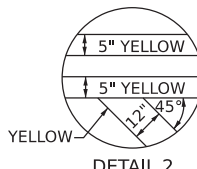
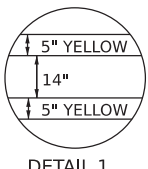
WHITE OAK ROAD  
SOUTH OF COLLEGE AVENUE INTERSECTION



WHITE OAK ROAD  
SOUTH OF COLLEGE AVENUE INTERSECTION  
CONTINUED

**LEGEND**

- 1 WHITE THERMOPLASTIC STOP BAR PAVEMENT MARKING LINE - 24" SOLID
- 2 YELLOW PAINT PAVEMENT MARKING LINE - 5" SOLID
- 3 WHITE THERMOPLASTIC PAVEMENT MARKING LINE - 5" SOLID
- 4 WHITE THERMOPLASTIC PAVEMENT MARKING LINE - 8" SOLID
- 5 YELLOW THERMOPLASTIC PAVEMENT MARKING LINE - 12" (ON 45° ANGLE, 20' CTC)
- 6 DOUBLE YELLOW THERMOPLASTIC PAVEMENT MARKING LINE - 5" SOLID
- 7 WHITE PAINT PAVEMENT MARKING LINE - 10' LONG, 30' GAP - 5"
- 8 THERMOPLASTIC PAVEMENT MARKING, LETTERS AND SYMBOLS (FOR LEFT TURN LANE ON COLLEGE AVENUE ONE ARROW 20' FROM FRONT OF STORAGE AND ONE ARROW 20' FROM BACK OF STORAGE)
- 9 WHITE THERMOPLASTIC PAVEMENT MARKING LINE - 8" (2' LONG, 6' GAP)
- 10 PAINT PAVEMENT MARKING, LETTERS AND SYMBOLS
- 11 WHITE THERMOPLASTIC PAVEMENT MARKING LINE - 12"



MODEL: College Avenue Intersection - Striping Plan (Sheet)  
FILE NAME: X:\CADD\Roads\CH\_702\0401182-03-R5 - White Oak Road - 2021\Design\DM\Plan\_Sheets\20-00182-03-R5\_White Oak College Int.DESIGN.dgn

USER NAME = zachary.wall	DESIGNED -	REVISED -
DRAWN - TRM	REVISOR -	
PLOT SCALE = 0.08333317' / in.	CHECKED - LDH	REVISOR -
PLOT DATE = 12/6/2021	DATE - 12/06/2021	REVISOR -

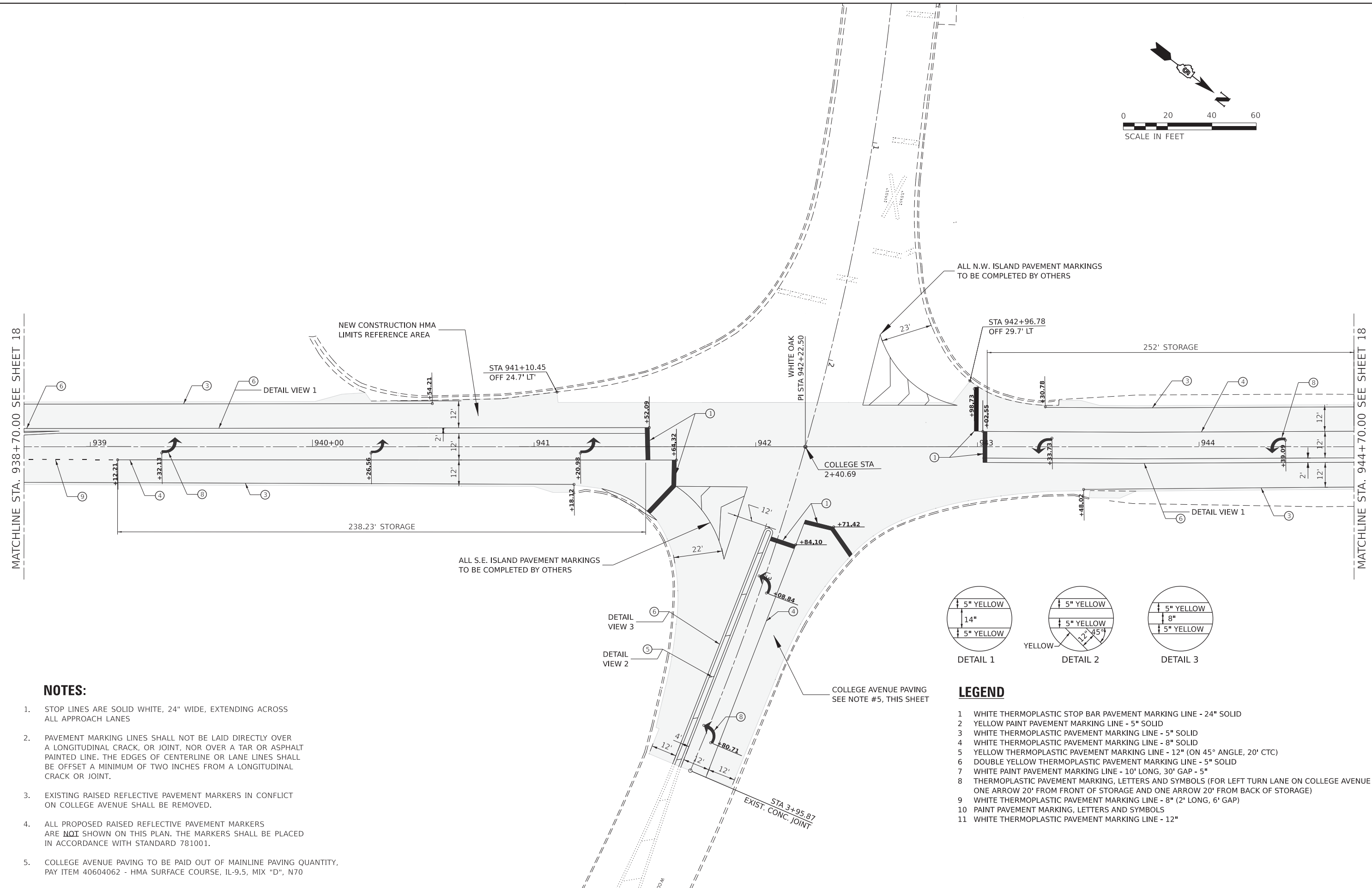
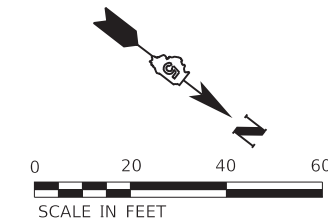
**STATE OF ILLINOIS  
DEPARTMENT OF TRANSPORTATION**

**COLLEGE AVENUE INTERSECTION  
PAVEMENT MARKING PLAN**

SCALE: SHEET 3 OF 4 SHEETS STA. TO STA.

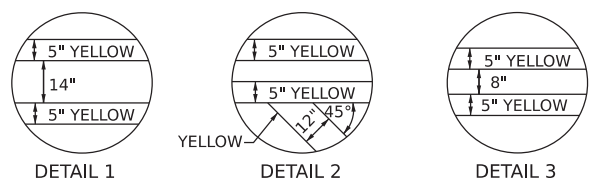
F.A.U. RTE.	SECTION	COUNTY	TOTAL SHEETS	SHEET NO.
6385	20-00182-03-R5	MCLEAN	20	18
CONTRACT NO. 91608				
ILLINOIS FED. AID PROJECT				





**NOTES:**

- STOP LINES ARE SOLID WHITE, 24" WIDE, EXTENDING ACROSS ALL APPROACH LANES
- PAVEMENT MARKING LINES SHALL NOT BE LAID DIRECTLY OVER A LONGITUDINAL CRACK, OR JOINT, NOR OVER A TAR OR ASPHALT PAINTED LINE. THE EDGES OF CENTERLINE OR LANE LINES SHALL BE OFFSET A MINIMUM OF TWO INCHES FROM A LONGITUDINAL CRACK OR JOINT.
- EXISTING RAISED REFLECTIVE PAVEMENT MARKERS IN CONFLICT ON COLLEGE AVENUE SHALL BE REMOVED.
- ALL PROPOSED RAISED REFLECTIVE PAVEMENT MARKERS ARE **NOT** SHOWN ON THIS PLAN. THE MARKERS SHALL BE PLACED IN ACCORDANCE WITH STANDARD 781001.
- COLLEGE AVENUE PAVING TO BE PAID OUT OF MAINLINE PAVING QUANTITY, PAY ITEM 40604062 - HMA SURFACE COURSE, IL-9.5, MIX "D", N70



**LEGEND**

- WHITE THERMOPLASTIC STOP BAR PAVEMENT MARKING LINE - 24" SOLID
- YELLOW PAINT PAVEMENT MARKING LINE - 5" SOLID
- WHITE THERMOPLASTIC PAVEMENT MARKING LINE - 5" SOLID
- WHITE THERMOPLASTIC PAVEMENT MARKING LINE - 8" SOLID
- YELLOW THERMOPLASTIC PAVEMENT MARKING LINE - 12" (ON 45° ANGLE, 20' CTC)
- DOUBLE YELLOW THERMOPLASTIC PAVEMENT MARKING LINE - 5" SOLID
- WHITE PAINT PAVEMENT MARKING LINE - 10' LONG, 30' GAP - 5"
- THERMOPLASTIC PAVEMENT MARKING, LETTERS AND SYMBOLS (FOR LEFT TURN LANE ON COLLEGE AVENUE ONE ARROW 20' FROM FRONT OF STORAGE AND ONE ARROW 20' FROM BACK OF STORAGE)
- WHITE THERMOPLASTIC PAVEMENT MARKING LINE - 8" (2' LONG, 6' GAP)
- PAINT PAVEMENT MARKING, LETTERS AND SYMBOLS
- WHITE THERMOPLASTIC PAVEMENT MARKING LINE - 12"

MODEL: College Avenue Intersection - Schedule Plan 2 (Sheet 1)  
 FILE NAME: X:\CountyRoads\CH\_7020400182-03-R5 - White Oak Road - 2023\Design\DM\Plan\_Sheets\20-00182-03-R5\_White Oak College Int DESIG.dgn

USER NAME = zachary.wall	DESIGNED -	REVISED -
	DRAWN - TRM	REVISED -
PLOT SCALE = 0.08333317 ' / in.	CHECKED - LDH	REVISED -
PLOT DATE = 12/9/2021	DATE - 12/06/2021	REVISED -

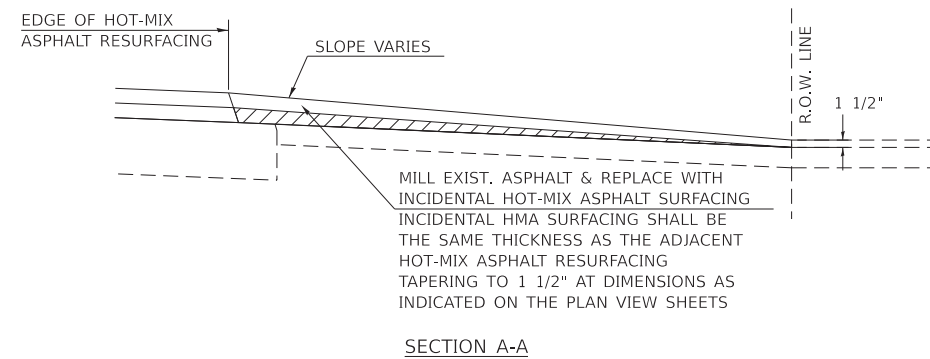
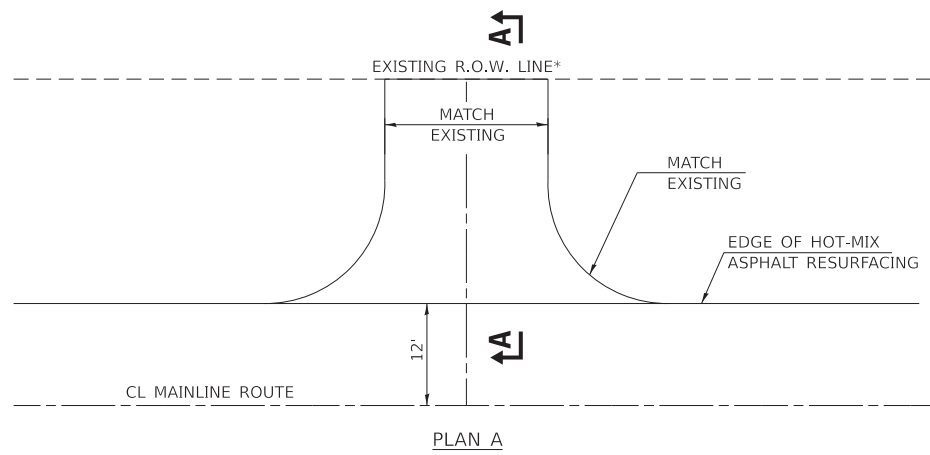
**STATE OF ILLINOIS  
DEPARTMENT OF TRANSPORTATION**

**COLLEGE AVENUE INTERSECTION  
PAVEMENT MARKING PLAN**

SCALE: SHEET 4 OF 4 SHEETS STA. TO STA.

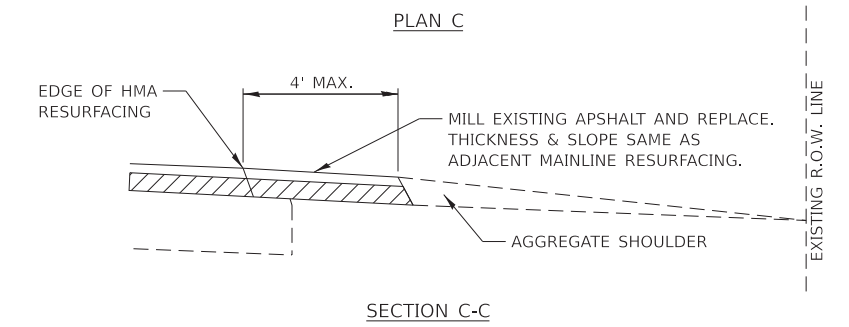
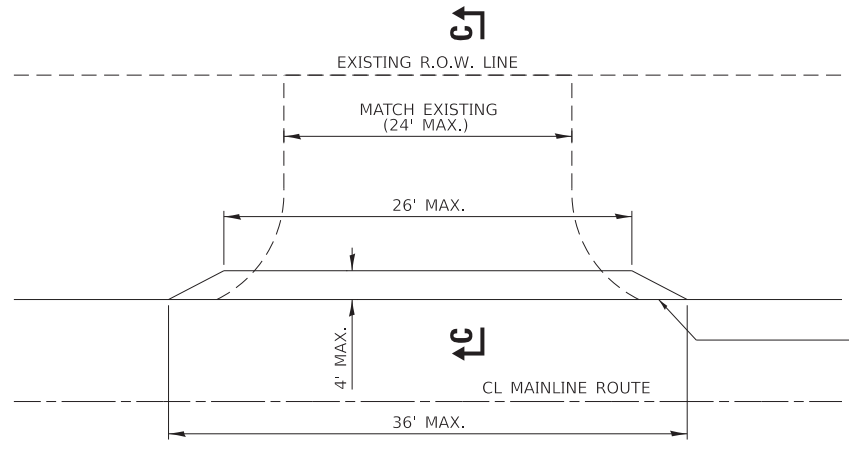
F.A.U. RTE.	SECTION	COUNTY	TOTAL SHEETS	SHEET NO.
6385	20-00182-03-R5	MCLEAN	20	19
CONTRACT NO. 91608				
ILLINOIS FED. AID PROJECT				

**TYPICAL PRIVATE ENTRANCE DETAIL**



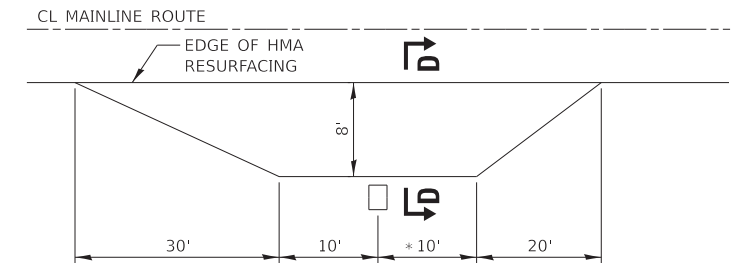
**TYPICAL FIELD ENTRANCE**

13.8 SQ YDS (MAX.) OR MATCH EXISTING

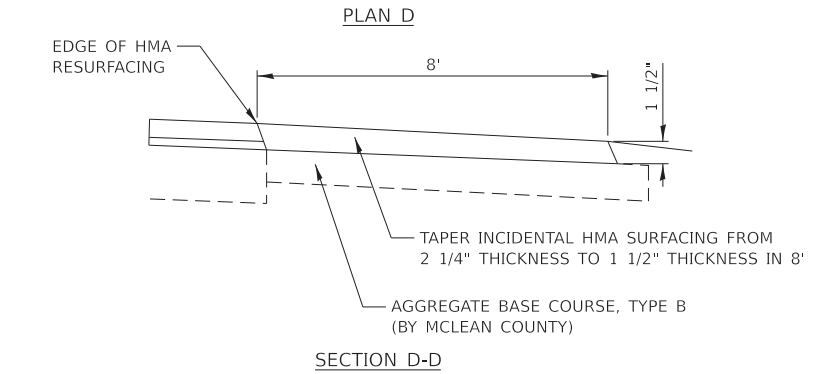


**TYPICAL RURAL MAILBOX TURNOUT**

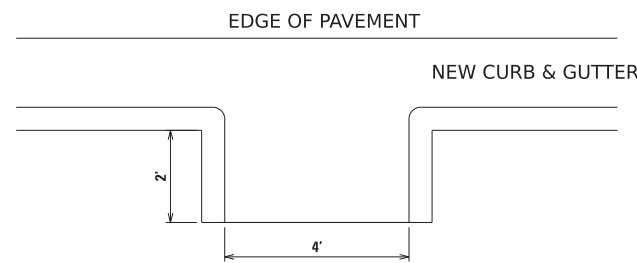
41.0 SQ YDS (MIN.)\*



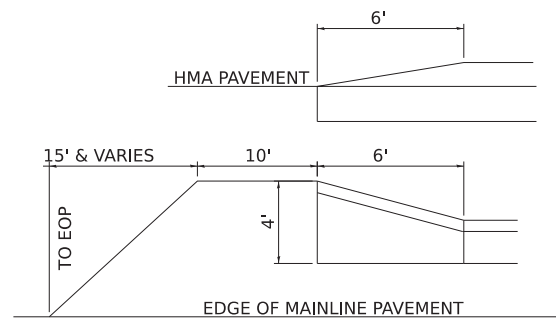
\*NOTE: MULTIPLE MAILBOX CLUSTERS TO BE EXTENDED 2' FOR EACH ADDITIONAL MAILBOX



**CURB & GUTTER OUTLET DETAIL**

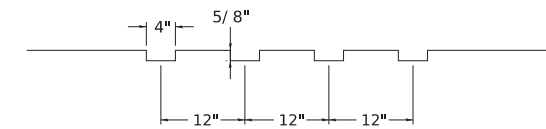


**CURB & GUTTER OUTLET DETAIL**



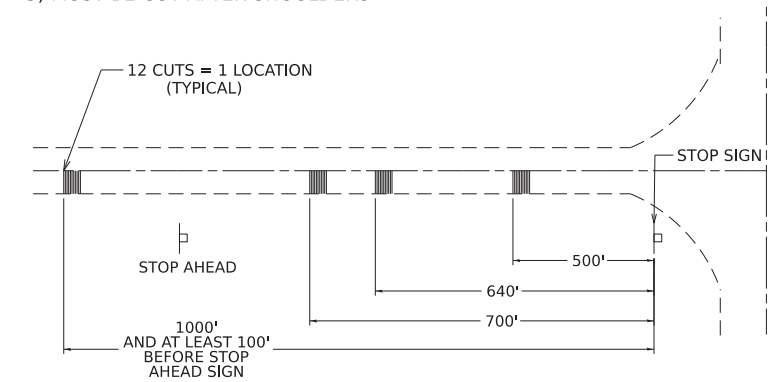
NOTE: CURB & GUTTER OUTLETS WILL BE PAID FOR AS COMBINATION CONCRETE CURB & GUTTER, TYPE M-6.18 AND MEASURED ALONG FACE OF CURB FOR PAYMENT BY THE FOOT AND IS INCLUDED IN PLAN QUANTITY. NO ADDITIONAL COMPENSATION WILL BE ALLOWED.

**SAW CUT RUMBLE STRIP STANDARD**



NOTES:

- 1) SAWCUTS 4" WIDE X 5/8" DEEP ON 12" CENTERS
- 2) MEASUREMENTS FROM STOP SIGN TO FAR END OF RUMBLE STRIP
- 3) MUST BE CUT AFTER SHOULDERS



NOTES:

1. ALL TEMPORARY AND PAVEMENT STRIPING ON THE MAINLINE OF WHITE OAK ROAD WILL BE DONE BY OTHERS, EXCEPT AS STATED WITHIN THE PLANS.
2. ALL FIELD ENTRANCES SHALL BE CONSTRUCTED WITH THE EXTENDABLE SCREED WIDENER AND PAID FROM HOT-MIX ASPHALT BINDER AND SURFACE COURSES.
3. ALL SIDE ROAD RETURNS, PRIVATE ENTRANCES, COMMERCIAL ENTRANCES AND RURAL MAILBOX TURNOUTS ARE TO BE CONSTRUCTED AND PAID FROM INCIDENTAL HOT-MIX ASPHALT SURFACING.
4. AGGREGATE SHOULDERS SHALL BE PLACED ALONG ALL SIDEROAD RETURN RADII AND SHALL BE PLACED ALONG AND BEHIND ALL FIELD ENTRANCES, GUADRIL AND GUADRIL RUNOUTS, MAILBOX TURNOUTS AND ALL PRIVATE AND COMMERCIAL ENTRANCES UNLESS SPECIFIED BY THE RESIDENT ENGINEER.

MODEL: Typical Detail  
FILE NAME: X:\County\Revised\CH 70\20-00182-03-RS - White Oak Road - 2023\Design\DCM\Plan Sheets\20-00182-03-RS\_White Oak\_Misc\_Typ\_Details.dgn

USER NAME = zachary.wall	DESIGNED -	REVISED -
	DRAWN - ZRW	REVISED -
PLOT SCALE = 0.08333317 ' / in.	CHECKED -	REVISED -
PLOT DATE = 12/6/2021	DATE - 12/06/2021	REVISED -

**STATE OF ILLINOIS  
DEPARTMENT OF TRANSPORTATION**

**MISCELLANEOUS DETAILS**

SCALE: SHEET 1 OF 1 SHEETS STA. TO STA.

F.A.U. RTE.	SECTION	COUNTY	TOTAL SHEETS	SHEET NO.
6385	20-00182-03-RS	MCLEAN	20	20
CONTRACT NO. 91608				
ILLINOIS FED. AID PROJECT				