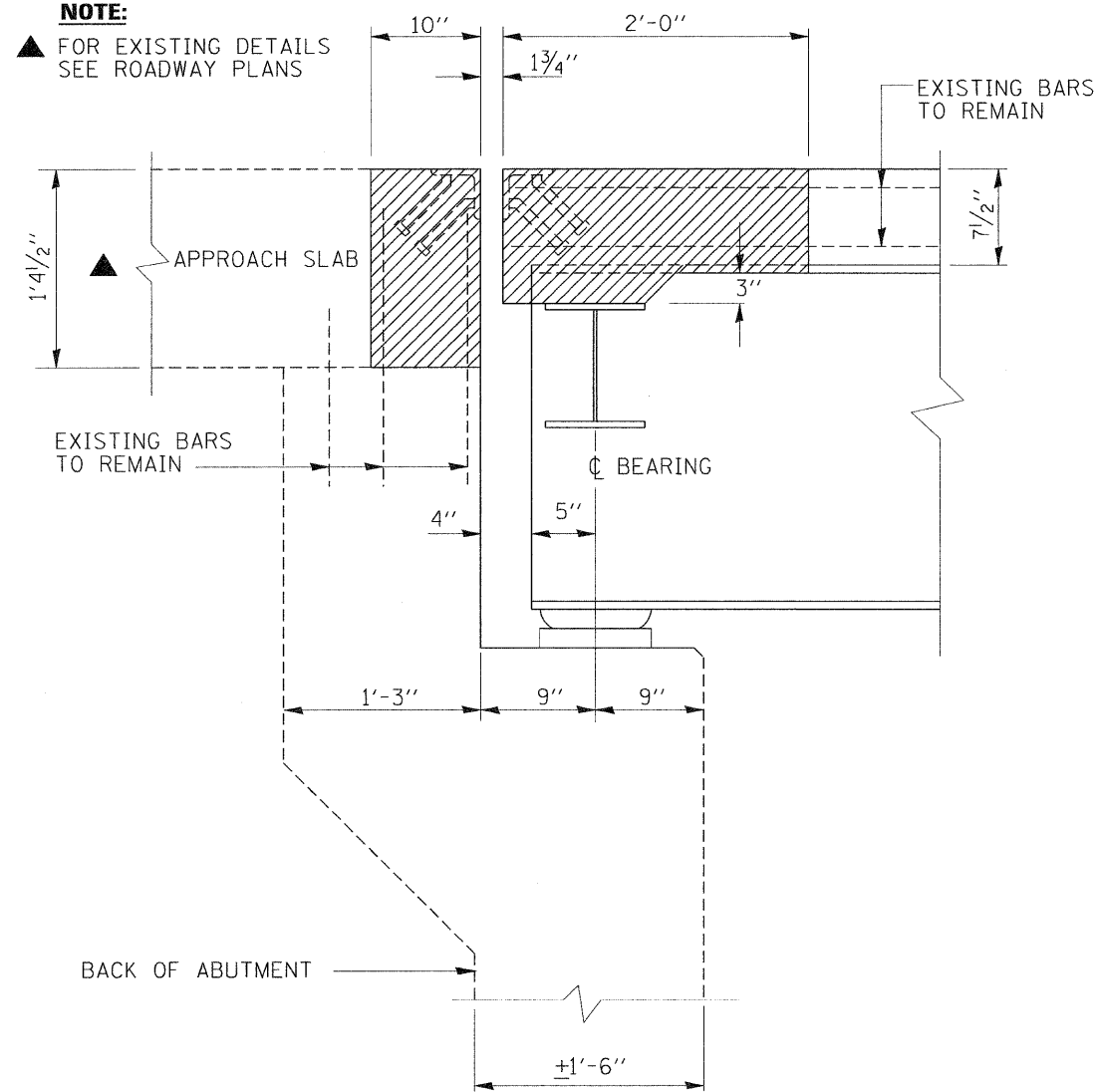


**NOTE:**

▲ FOR EXISTING DETAILS SEE ROADWAY PLANS

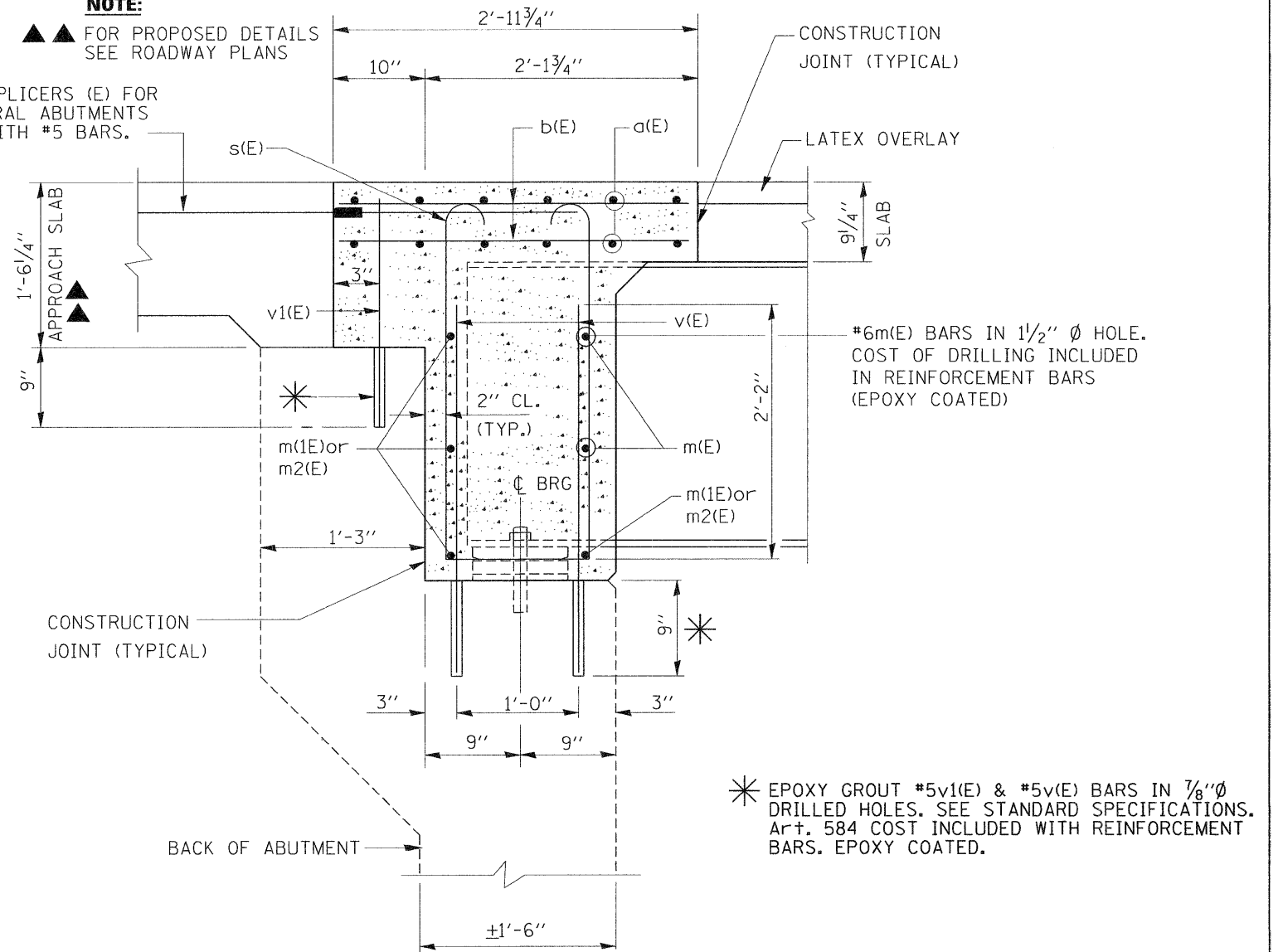


**EXISTING SECTION B-B**  
(HATCHED AREA INDICATES REMOVAL)

**NOTE:**

▲▲ FOR PROPOSED DETAILS SEE ROADWAY PLANS

BAR SPLICERS (E) FOR INTEGRAL ABUTMENTS LAP WITH #5 BARS.



**PROPOSED SECTION B-B**

FILE NAME =	USER NAME = midyjo	DESIGNED - MVT	REVISED -	<b>STATE OF ILLINOIS DEPARTMENT OF TRANSPORTATION</b>	<b>IL 53 (BALTIMORE STREET) OVER FORKED CREEK INTEGRAL ABUTMENTS S.N. 099-0091</b>				F.A.P. RTE.	SECTION	COUNTY	TOTAL SHEETS	SHEET NO.
ce:\pwwork\pwwork\midyjo\101671\099-0091.dgn		DRAWN - MVT	REVISED -		846	4 B-2-BR	WILL	26	6				
PLOT SCALE = 50.0000' / IN.		CHECKED - RTB	REVISED -		CONTRACT NO. 60L50				ILLINOIS FED. AID PROJECT				
PLOT DATE = 3/16/2011		DATE - 3/8/11	REVISED -		SCALE:	SHEET NO.	OF SHEETS	STA.	TO STA.				