

QUANTITIES FOR 50-FOOT APPROACH SLAB

Skew Angle	Bottom Reinforcement			Top Reinforcement				Total Weight bars-lbs.
	#5 B bars	A		#4 A ₃ bars	#4 A ₄ bars			
No.	Length	A ₁	A ₂	B ₁	No.	Length	No.	Length

Skew Angle	Bottom Reinforcement			Top Reinforcement				Total Weight bars-lbs.
	#5 B bars	A		#4 A ₃ bars	#4 A ₄ bars			
No.	Length	A ₁	A ₂	B ₁	No.	Length	No.	Length

Skew Angle	Bottom Reinforcement			Top Reinforcement				Total Weight bars-lbs.
	#5 B bars	A		#4 A ₃ bars	#4 A ₄ bars			
No.	Length	A ₁	A ₂	B ₁	No.	Length	No.	Length

16-FOOT WIDTH PAVEMENT

Skew Angle	No.	Length	#5 B bars	A	A ₁	A ₂	B ₁	#4 A ₃ bars	#4 A ₄ bars	Total Weight bars-lbs.
0°	40	15'-6"	54	25'-6"	—	—	—	—	—	4910
5°	40	15'-7"	54	25'-4"	14	3'-11"	—	—	—	4950
10°	40	15'-9"	54	25'-0"	14	5'-2"	—	—	—	4950
15°	40	16'-1"	54	24'-9"	14	6'-5"	—	—	—	4970
20°	40	16'-6"	54	24'-5"	14	7'-9"	—	—	—	4990
25°	40	17'-1"	54	24'-0"	14	9'-2"	—	—	—	5010
30°	40	17'-11"	54	23'-8"	14	10'-9"	—	—	—	5050
35°	40	18'-11"	54	23'-3"	14	12'-6"	—	—	—	5090
40°	40	20'-3"	54	22'-9"	14	14'-5"	—	—	—	5150
45°	40	21'-11"	54	22'-2"	14	16'-8"	—	—	—	5220
50°	40	24'-1"	54	21'-6"	14	19'-4"	—	—	—	5310
55°	40	27'-0"	54	20'-8"	14	22'-8"	—	—	—	5430
60°	40	31'-0"	54	19'-8"	14	26'-11"	—	—	—	5600

* Requires greater than 50 foot Approach Slab

24-FOOT WIDTH PAVEMENT

Skew Angle	No.	Length	#5 B bars	A	A ₁	A ₂	B ₁	#4 A ₃ bars	#4 A ₄ bars	Total Weight bars-lbs.
0°	40	23'-6"	84	25'-6"	—	—	—	—	—	7190
5°	40	23'-7"	84	25'-2"	21	4'-9"	—	—	—	7240
10°	40	23'-10"	84	24'-8"	21	6'-11"	—	—	—	7250
15°	40	24'-4"	84	24'-0"	21	9'-1"	—	—	—	7270
20°	40	25'-0"	84	23'-6"	21	11'-5"	—	—	—	7300
25°	40	25'-11"	84	22'-10"	21	13'-10"	—	—	—	7340
30°	40	27'-2"	84	22'-3"	21	16'-6"	—	—	—	7390
35°	40	28'-8"	84	21'-6"	21	19'-6"	—	—	—	7450
40°	40	30'-8"	84	20'-8"	21	22'-10"	—	—	—	7540
45°	40	33'-3"	84	19'-8"	21	26'-8"	—	—	—	7640
50°	80	19'-1"	42	35'-3"	21	31'-3"	—	—	—	7800
55°	80	21'-4"	42	32'-6"	21	36'-11"	—	—	—	7990
60°										

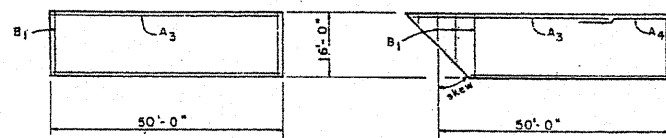
* Requires greater than 50 foot Approach Slab

36-FOOT WIDTH PAVEMENT

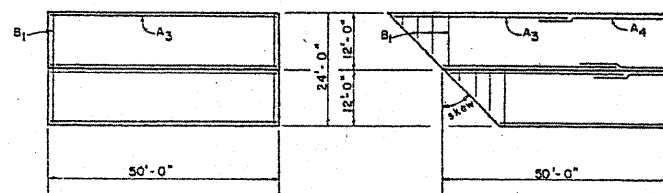
Skew Angle	No.	Length	#5 B bars	A	A ₁	A ₂	B ₁	#4 A ₃ bars	#4 A ₄ bars	Total Weight bars-lbs.
0°	40	35'-6"	126	25'-6"	—	—	—	—	—	10560
5°	40	35'-8"	126	24'-11"	32	5'-10"	—	—	—	10640
10°	40	36'-0"	126	24'-1"	32	9'-0"	—	—	—	10650
15°	80	19'-4"	126	23'-3"	32	12'-4"	—	—	—	10770
20°	80	19'-10"	126	22'-5"	32	15'-9"	—	—	—	10810
25°	80	20'-7"	126	21'-6"	32	19'-6"	—	—	—	10880
30°	80	21'-6"	126	20'-6"	32	23'-6"	—	—	—	10950
35°	80	22'-8"	126	19'-4"	32	27'-10"	—	—	—	11050
40°	80	24'-2"	63	34'-6"	32	32'-10"	—	—	—	11100
45°										
50°										
55°										
60°										

* Requires greater than 50 foot Approach Slab

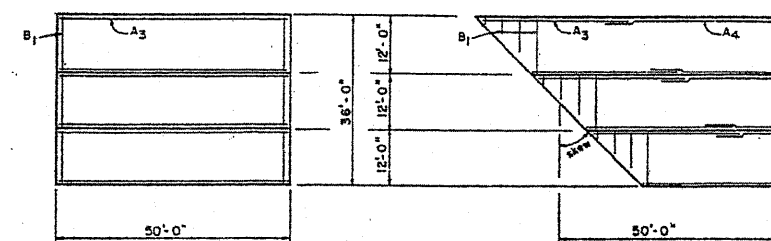
TOP OF SLAB BAR ARRANGEMENT



TOP OF SLAB BAR ARRANGEMENT



TOP OF SLAB BAR ARRANGEMENT



FOR INFORMATION ONLY

FILE NAME =	USER NAME = mdjje	DESIGNED -	REVISED -	STATE OF ILLINOIS DEPARTMENT OF TRANSPORTATION	EXISTING BRIDGE APPROACH PAVEMENT STANDARD 2360-2	F.A.P. RTE.	SECTION	COUNTY	TOTAL SHEETS	SHEET NO.	
ca\pwwork\pwwork\mdjje\08256471\017041	-sht-plan.dgn	DRAWN -	REVISED -			846	4 B-2-BR	WILL	26	15	
	PLOT SCALE = 1/8" = 1'-0"	CHECKED -	REVISED -			CONTRACT NO. 60L50					
	PLOT DATE = 2/17/2011	DATE -	REVISED -			ILLINOIS FED. AID PROJECT					