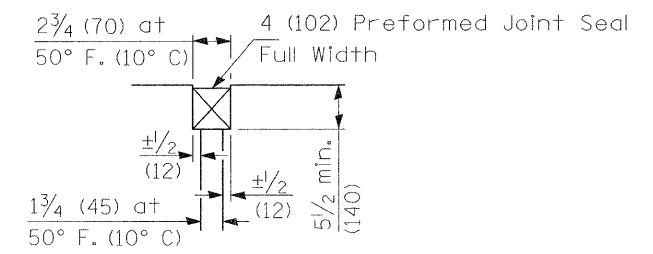
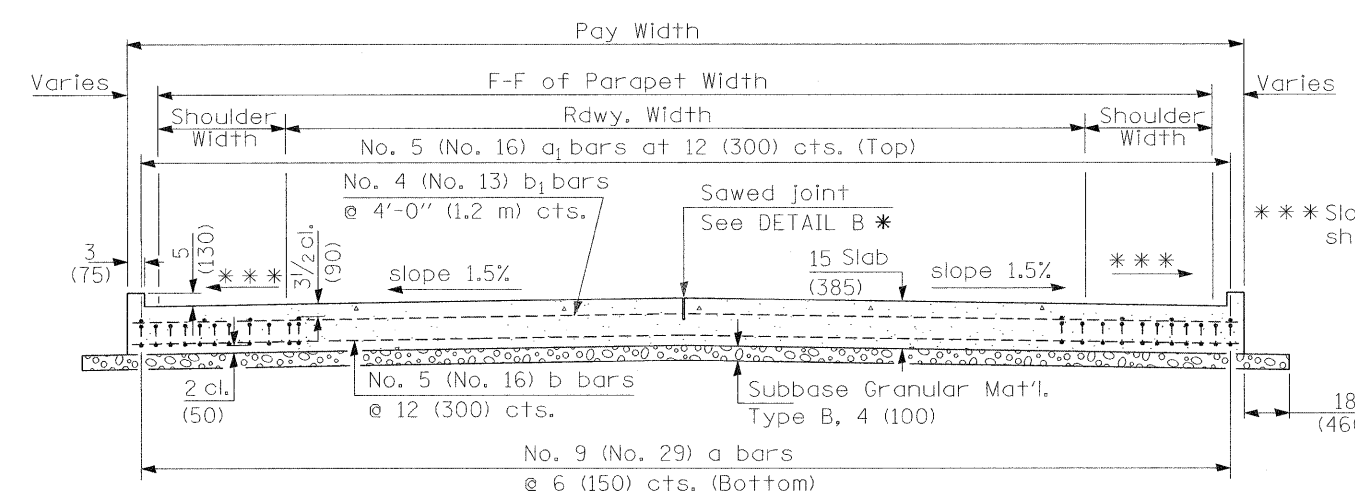


PREFORMED JOINT SEAL



DETAIL A

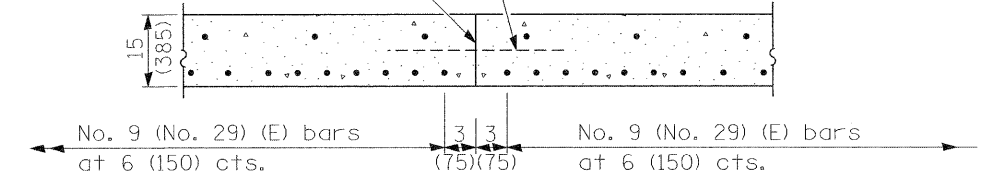
① Stagger No. 9 (No. 29) a bars as shown on plan - full width



SECTION D-D

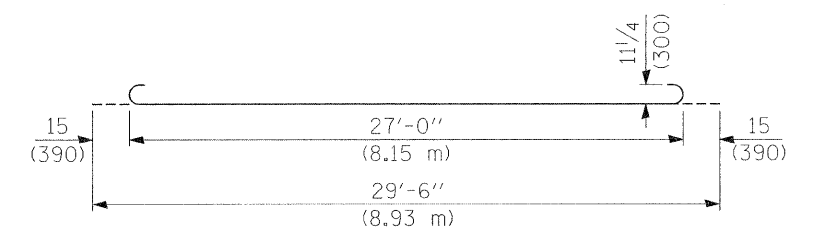
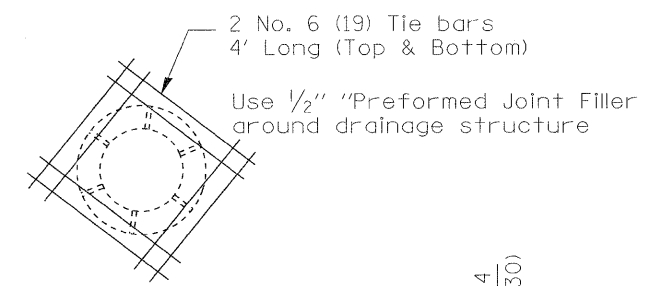
(See Plan for Dimensions not shown)

Longitudinal Construction Joint in accordance with details shown on Standard 420001.

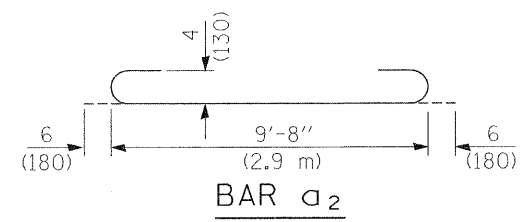


OPTIONAL LONGITUDINAL CONSTRUCTION JOINT

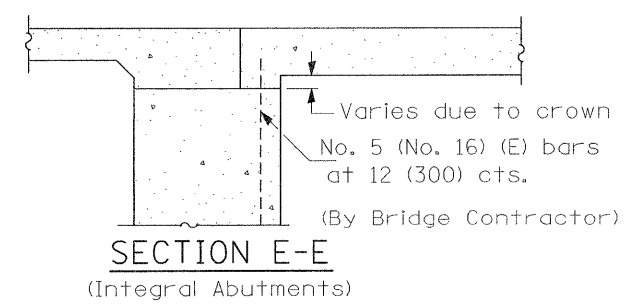
As approved by the Engineer, the Contractor may elect to reduce the widths of pour by use of the Optional Longitudinal Construction Joint shown. Joints shall be located at the edge of a traffic lane.



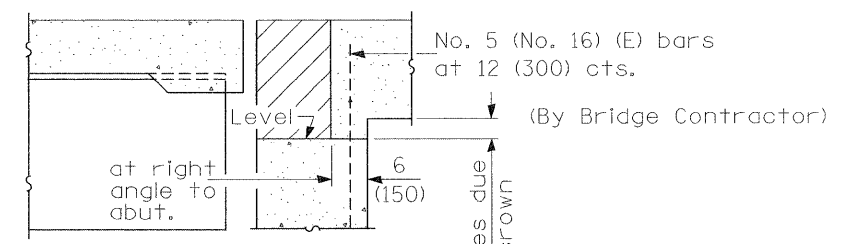
BAR a



BAR a₂



SECTION E-E (Integral Abutments)



SECTION E-E (Jointed Abutments)

DESIGN STRESSES

f_y = 60,000 p.s.i. (400 MPa)
 f'c = 3,500 p.s.i. (24 MPa)
 n = 8.5

FILE NAME =	USER NAME = msdjje	DESIGNED -	REVISED -	STATE OF ILLINOIS DEPARTMENT OF TRANSPORTATION	BRIDGE APPROACH PAVEMENT			F.A.P. RTE. =	SECTION	COUNTY	TOTAL SHEETS	SHEET NO.
ca:\pwwork\pawdot\msdjje\0256471\0170418\sh-t-plan.dgn		DRAWN -	REVISED -					846	4 B-2-BR	WILL	26	17
PLOT SCALE = 50.0000' / IN.		CHECKED -	REVISED -					CONTRACT NO. 60L50				
PLOT DATE = 3/16/2011		DATE -	REVISED -					ILLINOIS FED. AID PROJECT				
				SCALE:		SHEET NO. 2 OF 2 SHEETS		STA.		TO STA.		