

GENERAL NOTES

Reinforcement bars shall conform to the requirements of ASTM A 706 Gr 60. See Special Provisions.

Reinforcement bars designated (E) shall be epoxy coated.

Plan dimensions and details relative to existing plans are subject to nominal construction variations. The Contractor shall field verify existing dimensions and details affecting new construction and make necessary approved adjustments prior to construction or ordering of materials. Such variations shall not be cause for additional compensation for a change in scope of the work, however, the Contractor will be paid for the quantity actually furnished at the unit price bid for the work.

Stage Construction shall be utilized to maintain traffic during construction.

Protective Coat shall be applied to the new East Approach Slabs and Pavement Connector, the entire top surface of the existing bridge deck, sidewalks, and the tops and inside vertical faces of the parapets.

The Contractor shall exercise care during removal of the existing approach slab to ensure that the deck slab and abutment's integrity will not be detrimentally impacted. The Contractor shall repair any damage to the slab or abutment caused by his operation as directed by the Engineer at no additional cost to the Department.

Existing reinforcement bars extending into the removal area shall be cleaned, straightened and incorporated into the new construction. Any reinforcement bars that are damaged during concrete removal shall be replaced with an approved bar splicer or anchorage system. Cost included with Concrete Removal.

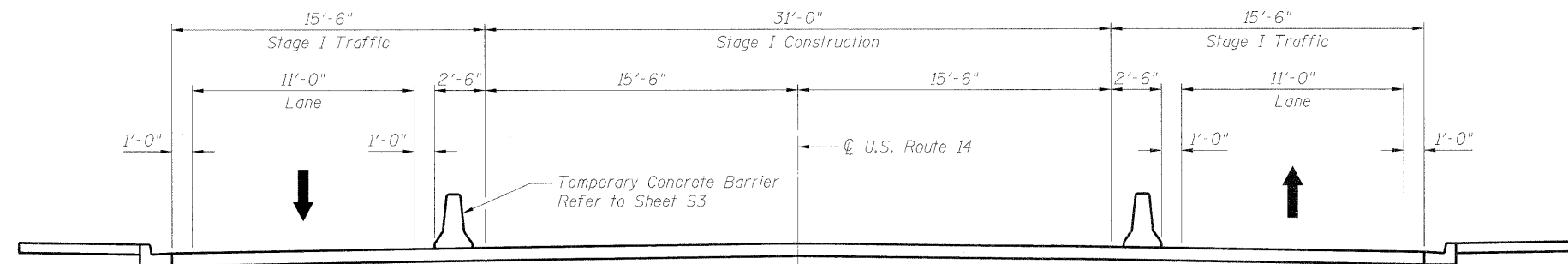
Existing pavement markings shall be temporarily covered prior to application of the deck surface treatment, to prevent the material from being applied to the markings. The temporary covering shall be removed after application of the deck surface treatment and prior to opening to traffic. Cost included with Protective Coat.

INDEX OF SHEETS

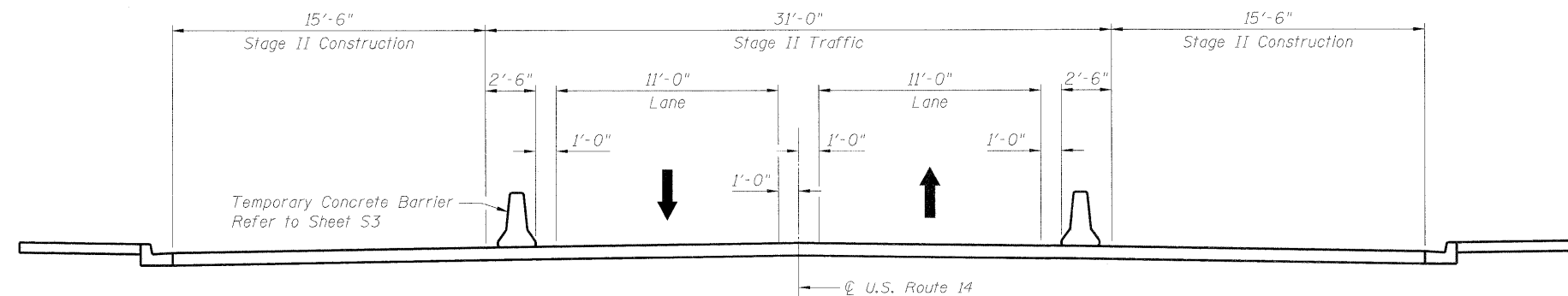
- S1. General Plan & Elevation
- S2. General Notes, Index of Sheets & Total Bill of Material
- S3. Temporary Concrete Barrier For Stage Construction
- S4. East Approach Slab Reconstruction
- S5. Bar Splicer Assembly
- S6. Existing Approach Slab Details

TOTAL BILL OF MATERIAL

ITEM	UNIT	SUPER	SUB	TOTAL
Bridge Approach Pavement	Sq. Yd.	138		138
Protective Coat	Sq. Yd.	1542		1542
Approach Slab Removal	Sq. Yd.	184		184



STAGE I CROSS SECTION



STAGE II CROSS SECTION

FILE NAME = G:\proj\proj\2102105_2088\CAD\Structure\0160367_60L55_002_General_Notes.dgn

	USER NAME = zsaqerb	DESIGNED - BHS	REVISED -	STATE OF ILLINOIS DEPARTMENT OF TRANSPORTATION	US 14 GENERAL NOTES, INDEX OF SHEETS & TOTAL BILL OF MATERIAL S.N. 016-0367 SHEET NO. S2 OF 6 SHEETS	F.A.P. RTE. 0341	SECTION 2010-070-1	COUNTY COOK	TOTAL SHEETS 18	SHEET NO. 8	
	PLOT SCALE = N/A	DRAWN - MJB	REVISED -			CONTRACT NO. 60L55					
	PLOT DATE = 3/1/2011	CHECKED - GSP	REVISED -			FED. ROAD DIST. NO. 1 ILLINOIS FED. AID PROJECT					