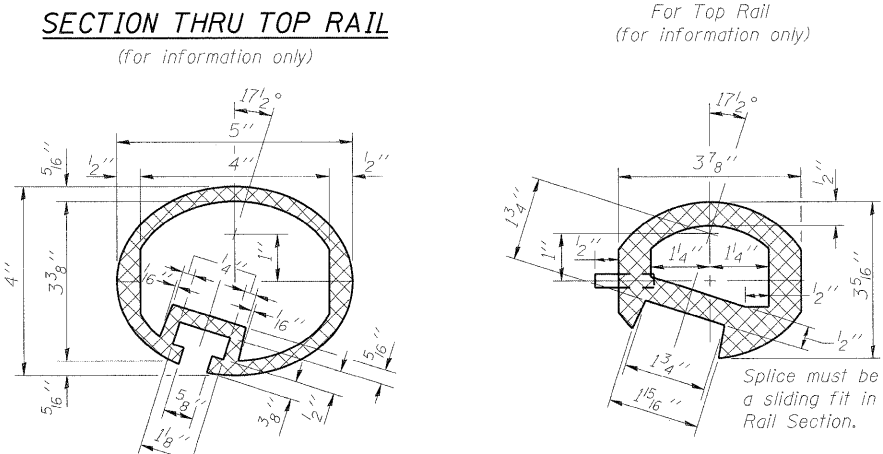
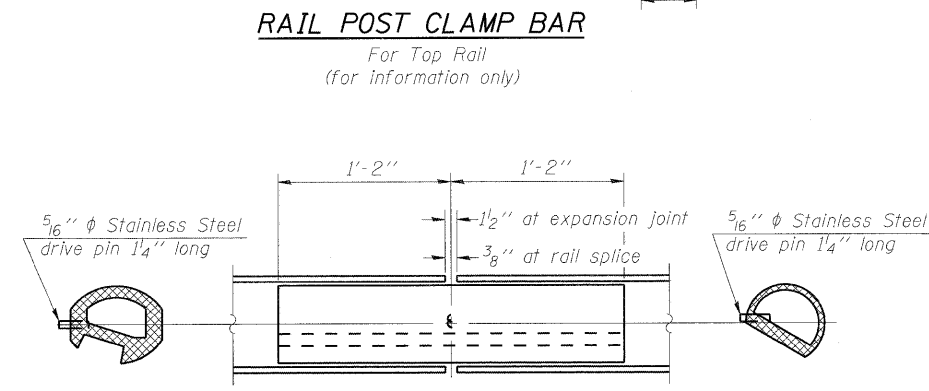
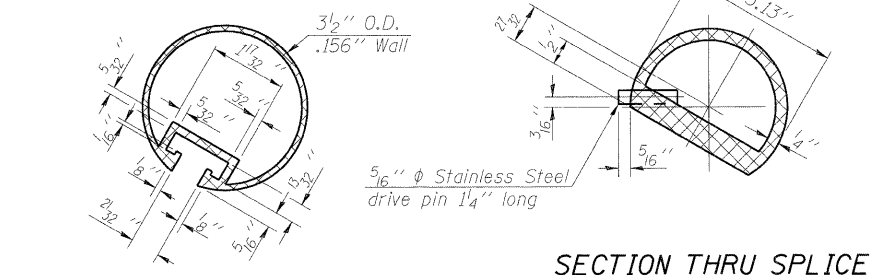
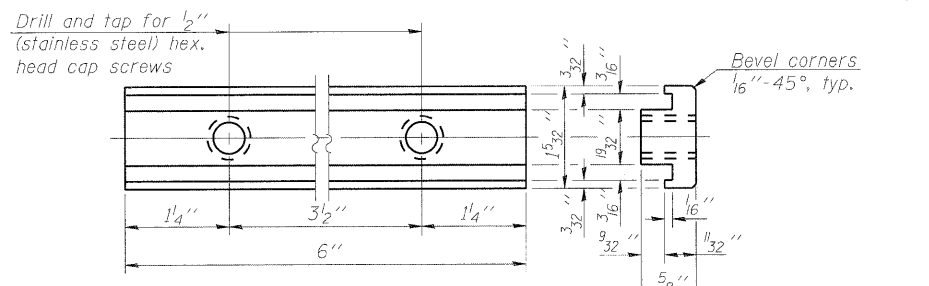
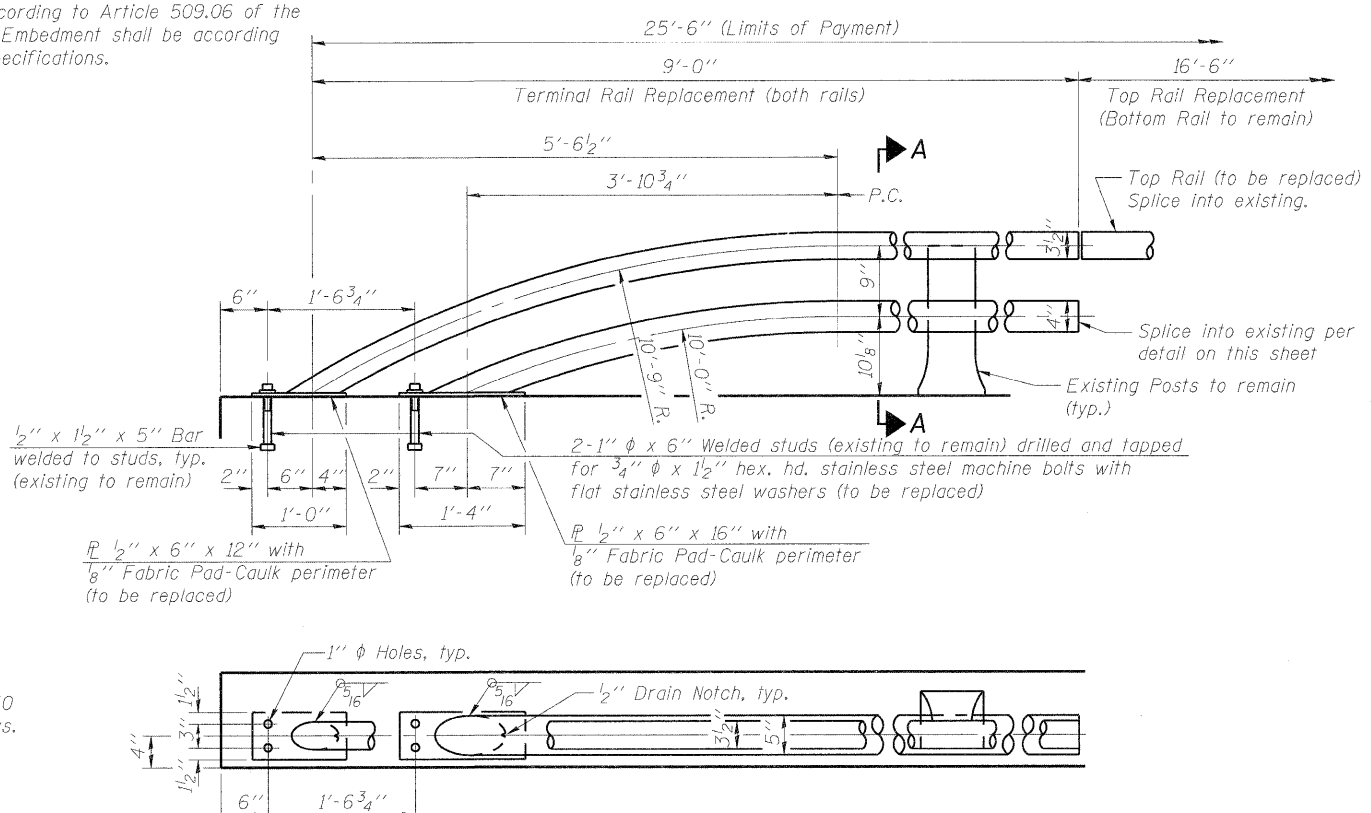


* In lieu of the cast-in-place anchor device shown, the Contractor has the option of drilling and setting stainless steel anchor rods of the same diameter and grade as the specified cap screws according to Article 509.06 of the Standard Specifications. Embedment shall be according to the manufacturer's specifications.



Notes:
 Rails for terminal section to be replaced at the northeast corner of the bridge.
 Top rail at northeast corner of the bridge to also be replaced to the length specified above. Splice the new top rail into the existing rail.
 Items to remain and items to be replaced are shown in the Rail Terminal Section above.

BILL OF MATERIAL

Item	Unit	Quantity
Aluminum Railing, Type L	Foot	25.5

FILE NAME = g:\projects\2102155L\0065\cadd\structure\0161024_608_5E_003_Pat1.rdg



USER NAME = zseayerb	DESIGNED - BHS	REVISED -
PLOT SCALE = N/A	CHECKED - GSP	REVISED -
PLOT DATE = 3/1/2011	DRAWN - MJB	REVISED -
	CHECKED - GSP	REVISED -

STATE OF ILLINOIS
DEPARTMENT OF TRANSPORTATION

ALUMINUM RAILING, TYPE L
S.N. 016-1054
SHEET NO. S2 OF 2 SHEETS

F.A.P. RTE.	SECTION	COUNTY	TOTAL SHEETS	SHEET NO.
0378	2010-070-1	COOK	18	14
FED. ROAD DIST. NO. 1		ILLINOIS FED. AID PROJECT		
		CONTRACT NO. 60L55		