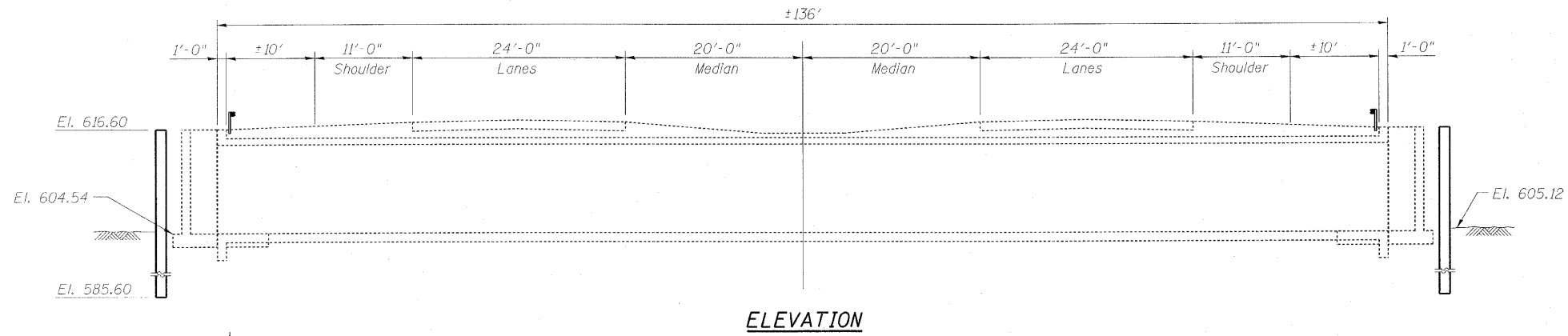
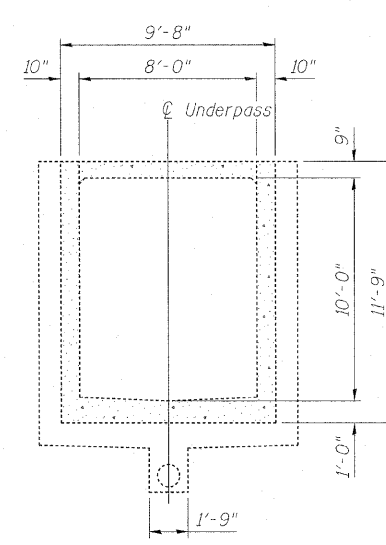


Existing Structure: S.N. 016-1211 was built in 1950 as Section No. 066-102.2.

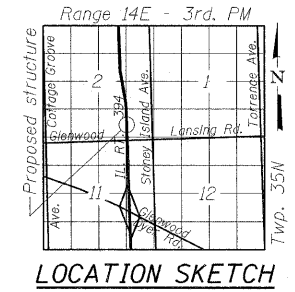
No Salvage.



**ELEVATION**



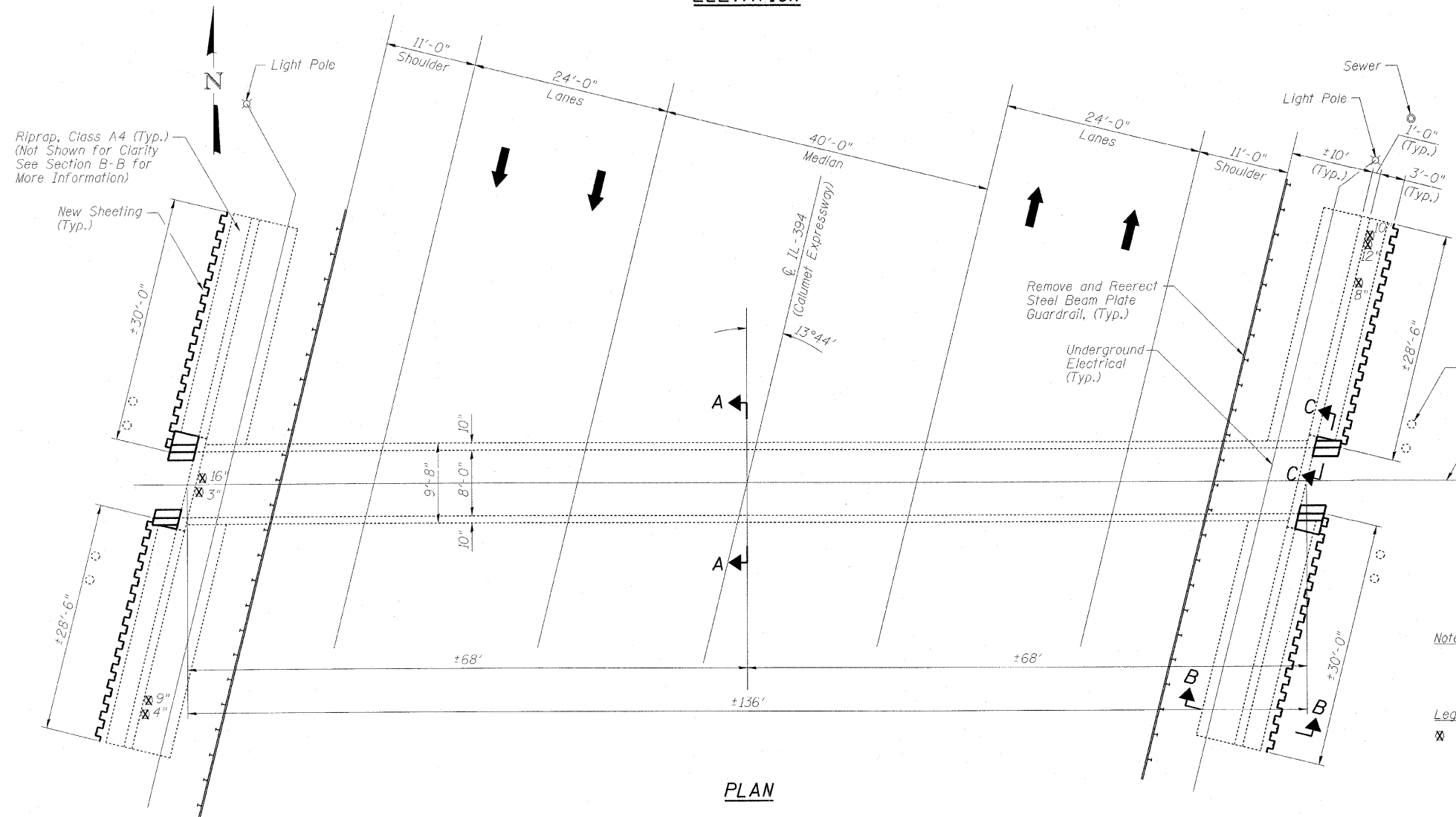
**SECTION A-A**



**LOCATION SKETCH**

**SCOPE OF WORK**

- I. Wingwall Repair.



**PLAN**

**DESIGN SPECIFICATIONS**  
2002 AASHTO Standard Specifications for Highway Bridges (17th Edition)

**LOADING HS20-44**

**DESIGN STRESSES**

**FIELD UNITS**  
f<sub>c</sub> = 3,500 psi  
f<sub>y</sub> = 60,000 psi (reinforcement)



Note:  
Refer to Sheet S2 for Section B-B and Section C-C.

Legend:  
⊗ Tree to be Removed

**GENERAL PLAN AND ELEVATION**  
**IL. RT. 394 OVER EQUESTRIAN TRAIL**  
**F.A.P. RT. 332 - SEC. 0312-708W-1**  
**WILL COUNTY**  
**STRUCTURE NO. 016-1211**

FILE NAME =	USER NAME =	DESIGNED - AMS	REVISIONS	<b>STATE OF ILLINOIS DEPARTMENT OF TRANSPORTATION</b>	<b>GENERAL PLAN AND ELEVATION STRUCTURE NO. 016-1211</b>	F.A.P. RTE.	SECTION	COUNTY	TOTAL SHEETS	SHEET NO.
	CHECKED - AMS	REVISIONS	332			0312-708W-1	COOK	9	4	
	DRAWN - DR	REVISIONS	CONTRACT NO. 60N81							
	CHECKED - JMH	REVISIONS	ILLINOIS FED. AID PROJECT							