

STATE OF ILLINOIS  
DEPARTMENT OF TRANSPORTATION  
DIVISION OF HIGHWAYS

**PROPOSED  
HIGHWAY PLANS**

FAP ROUTE 75 (IL 29)  
SECTION 1N

MEDIAN REMOVAL  
CHRISTIAN COUNTY

C-96-050-11

F.A.P. RTE.	SECTION	COUNTY	TOTAL SHEETS	SHEET NO.
75	IN	CHRISTIAN	4	1
		ILLINOIS	CONTRACT NO. 72E22	

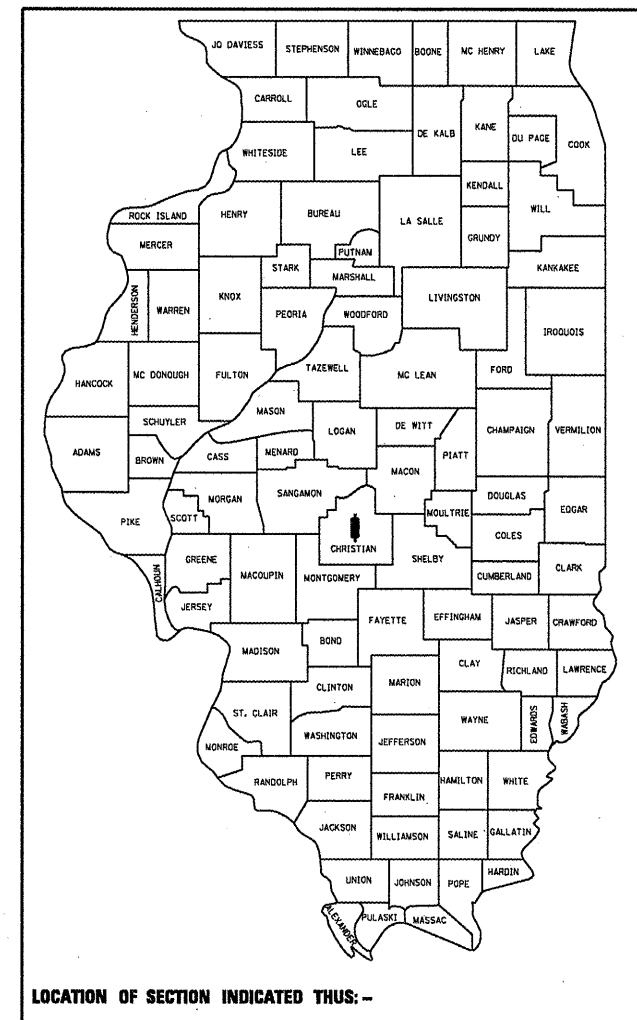
D-96-050-11

**FOR INDEX OF SHEETS**

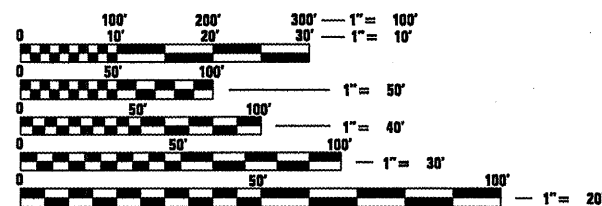
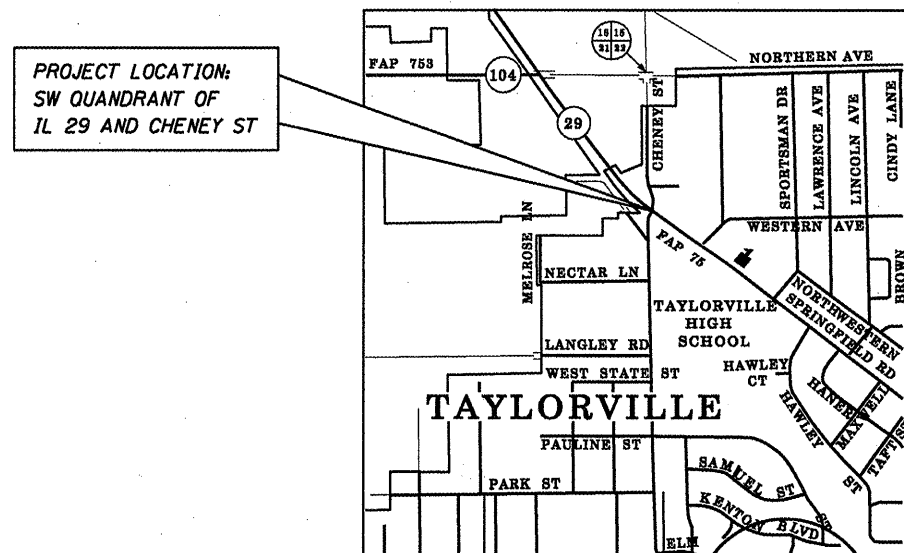
1. COVER SHEET
2. GENERAL NOTES
3. SUMMARY OF QUANTITIES
4. PLAN SHEET

**HIGHWAY STANDARDS**

000001-06  
701701-07  
780001-02



ADT = 16,000 (2009)  
TRUCKS = 7.2%



FULL SIZE PLANS HAVE BEEN PREPARED USING STANDARD ENGINEERING SCALES. REDUCED SIZED PLANS WILL NOT CONFORM TO STANDARD SCALES. IN MAKING MEASUREMENTS ON REDUCED PLANS, THE ABOVE SCALES MAY BE USED.

J.U.L.I.E.  
JOINT UTILITY LOCATION INFORMATION FOR EXCAVATION  
1-800-892-0123  
OR 811

PROJECT ENGINEER: JEFF MYERS (217)782-4761  
TEAM MANAGER: TOM COX (217)524-7940

GROSS LENGTH = 0.00 FT. = 0.00 MILE  
NET LENGTH = 0.00 FT. = 0.00 MILE

CONTRACT NO. 72E22

STATE OF ILLINOIS  
DEPARTMENT OF TRANSPORTATION  
DIVISION OF HIGHWAYS

SUBMITTED *February 10 20 11*  
*Rose Z. Omel*  
DEPUTY DIRECTOR OF HIGHWAYS, REGION ENGINEER

*March 4 20 11*  
*Scott E. Stitt P.E.*  
ACTING ENGINEER OF DESIGN AND ENVIRONMENT

*March 4 20 11*  
*Christine M. Reed*  
DIRECTOR OF HIGHWAYS, CHIEF ENGINEER

**PRINTED BY THE AUTHORITY  
OF THE STATE OF ILLINOIS**