

F.A.I. RTE.	SECTION	COUNTY	TOTAL SHEETS	SHEET NO.
57	2122-B	COOK	75	15
STA.		TO STA.		
FED. ROAD DIST. NO.		ILLINOIS FED. AID PROJECT		

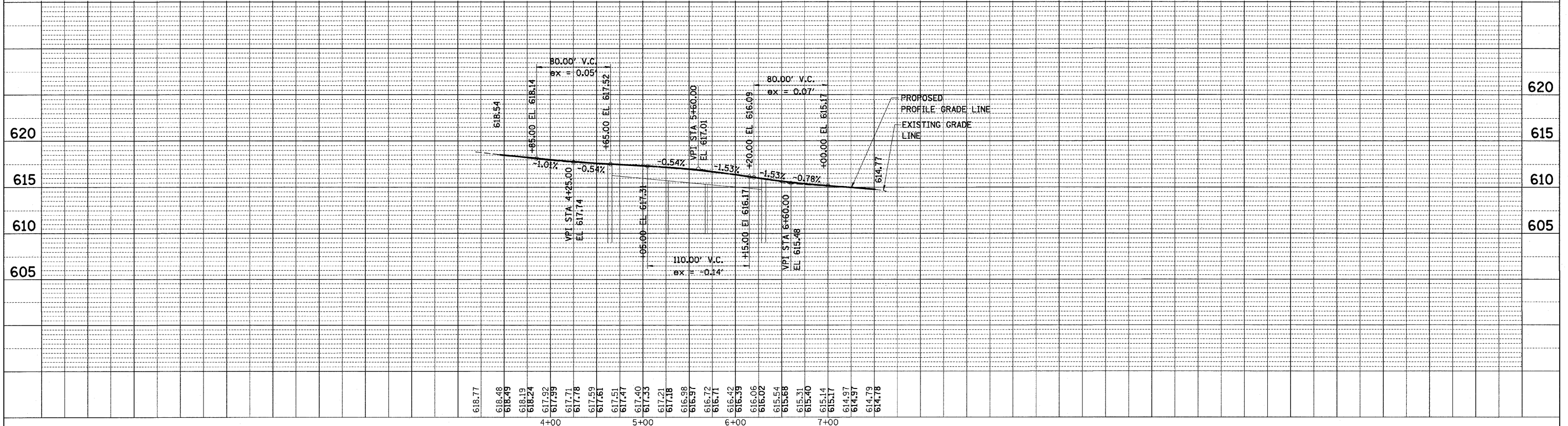
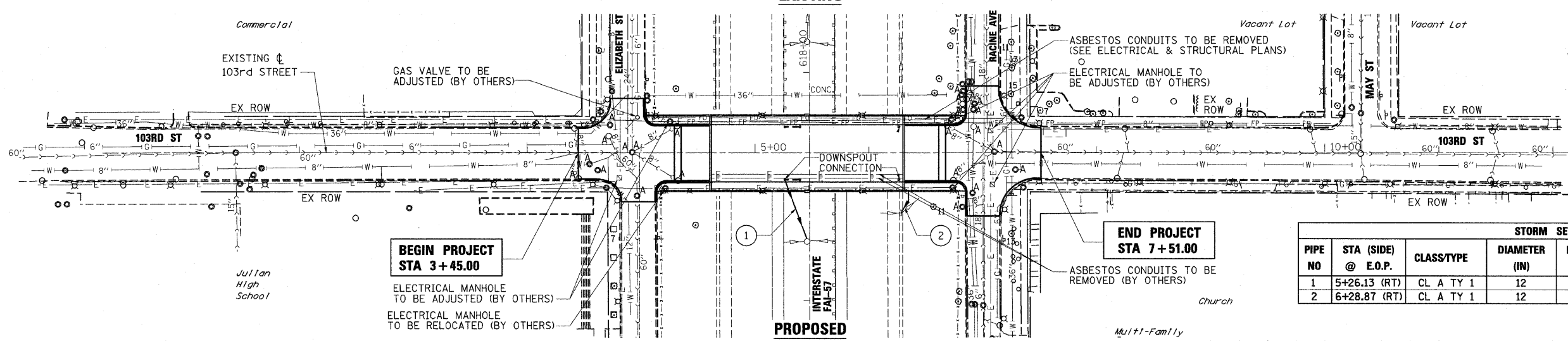
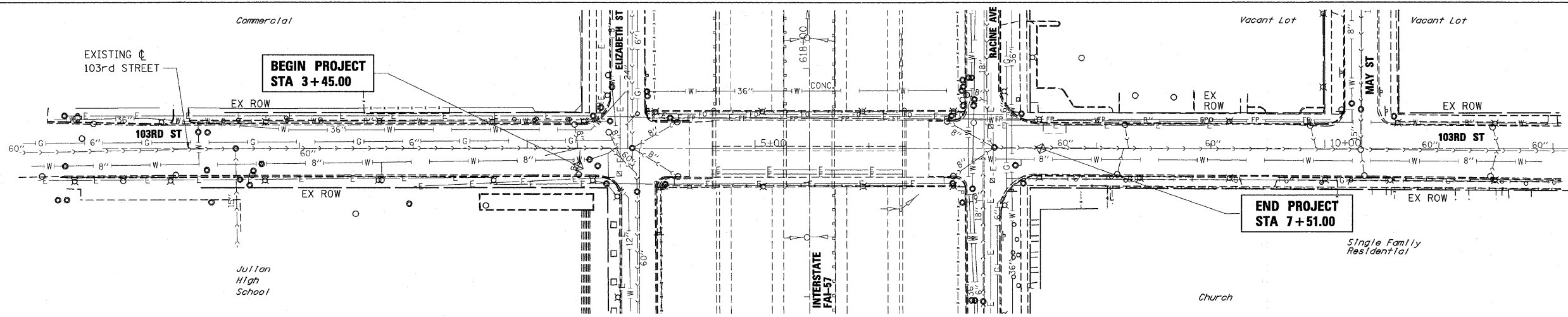
NOTES:

1. PLATING OF STRUCTURES NOT ALLOWED. STRUCTURES ARE TO REMAIN OPEN AT ALL TIMES. ASPHALT SHALL BE FEATHERED AND SHALL BE INCLUDED IN COST OF RESURFACING.

CATCH BASINS TO BE ADJUSTED (EACH)

STA	OFFSET
3+71.53	14.46 LT
4+31.65	23.37 LT
4+32.44	24.42 RT
3+45.28	22.72 RT
6+85.62	46.79 LT
6+68.47	23.90 LT
6+73.98	24.04 RT
TOTAL =	9 EACH

PIPE NO	STA (SIDE) @ E.O.P.	CLASS/TYPE	DIAMETER (IN)	LENGTH (FT)	SLOPE	I-57 STRUCTURE		
						INVERT	RIM	INVERT
1	5+26.13 (RT)	CL A TY 1	12	55	1%	590.21	594.26	589.66
2	6+28.87 (RT)	CL A TY 1	12	26	1%	592.88	596.72	592.62



PLAN	SURVEYED	DATE
NOTE BOOK NO.	ALIGNED	BY
	CHECKED	
	DATE	

PROFILE	SURVEYED	DATE
NOTE BOOK NO.	GRADES	BY
	CHECKED	
	DATE	

S:\stn\5-103rd\01.dgn
15-JAN-2009