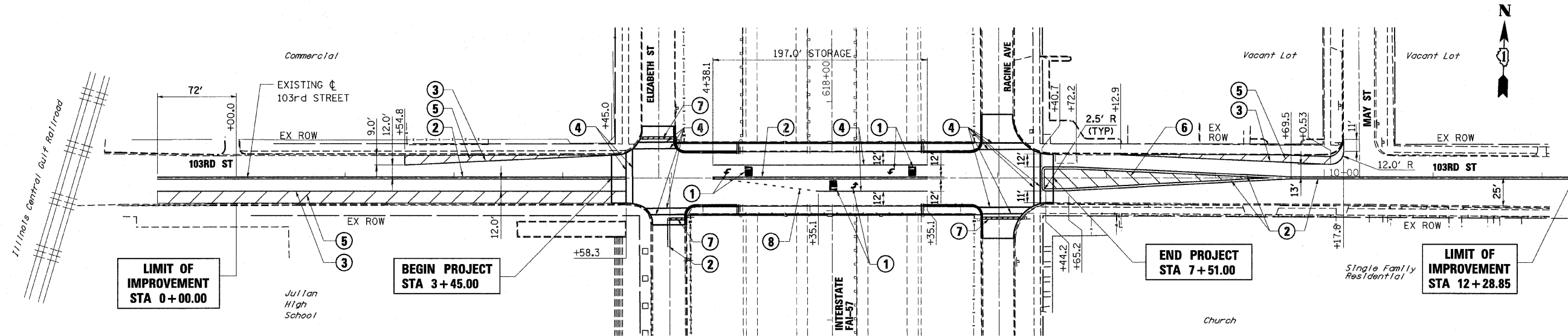


F.A.I. RTE.	SECTION	COUNTY	TOTAL SHEETS	SHEET NO.
57	2122-B	COOK	75	16
STA.		TO STA.		
FED. ROAD DIST. NO.		ILLINOIS	FED. AID PROJECT	

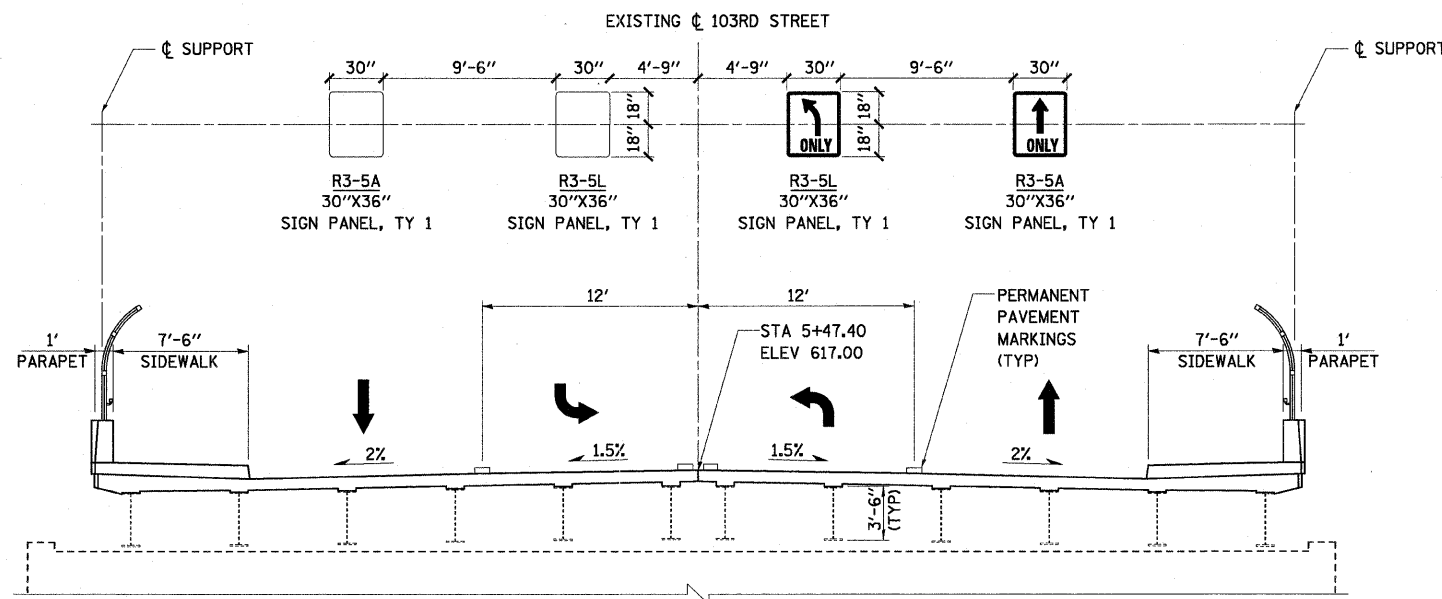


LEGEND:

- ① EPOXY PAVEMENT MARKING- LETTERS AND SYMBOLS
- ② EPOXY PAVEMENT MARKING- LINE 4", DOUBLE YELLOW
- ③ EPOXY PAVEMENT MARKING- LINE 4", WHITE
- ④ EPOXY PAVEMENT MARKING- LINE 6", WHITE
- ⑤ EPOXY PAVEMENT MARKING- LINE 12", WHITE
- ⑥ EPOXY PAVEMENT MARKING- LINE 12", YELLOW
- ⑦ EPOXY PAVEMENT MARKING- LINE 24", WHITE
- ⑧ EPOXY PAVEMENT MARKING- 2' DASH-6" SKIP 6", WHITE

NOTES:

1. SEE DISTRICT ONE STANDARD 'CITY OF CHICAGO TYPICAL PAVEMENT MARKINGS' FOR ADDITIONAL INFORMATION.
2. SEE MONOTUBE SIGN STRUCTURE DETAIL FOR MORE INFORMATION.
3. SIGN SHEETING SHALL BE TYPE ZZ HIGH INTENSITY.



OVERHEAD SIGN STRUCTURE - SPAN, MONOTUBE

STA 5+47.40
(LOOKING EASTERLY AND WESTERLY)

REVISIONS		ILLINOIS DEPARTMENT OF TRANSPORTATION
NAME	DATE	
		SIGNING AND PAVEMENT MARKING PLAN 103RD STREET SCALE: 1"=50' DATE: 15-JAN-2009 DRAWN BY: T.W.K. CHECKED BY: A.A.C.